



marmoleum®

WELL-BEING
STARTS HERE

creating better environments

Forbo

FLOORING SYSTEMS

STEP INTO **MODERN NATURE**

What happens when nature and technology merge and make each other stronger? Then Modern Nature arises. This is our answer to a more healthy, sustainable future.

We help to create better environments that add to the well-being of everyone and everything.

Marmoleum connects with modern nature through climate positive flooring and contributes to each and everyone's wellbeing on many levels.

An endless source of inspiration, from the natural materials we use to the colors and designs we offer. It's designed to have a contribution to a safe and hygienic and comfortable environment.

A truly unmatched product with endless possibilities.

We invite you to create sustainable spaces that have a positive impact on everyone and everything.

marmoleum®

climate positive from cradle to gate,
without offsetting



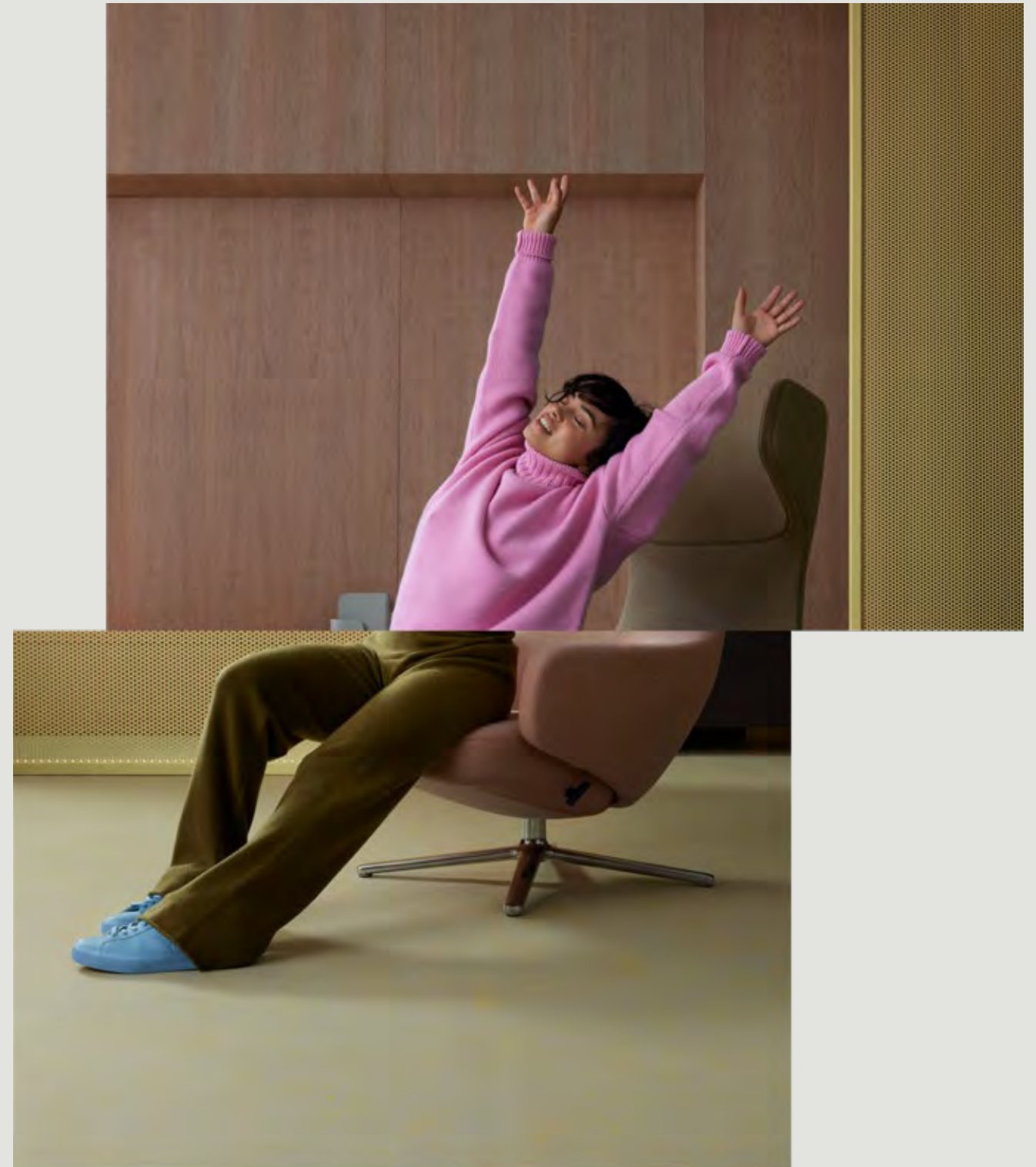
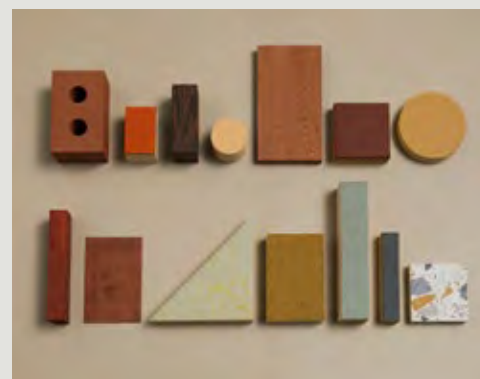
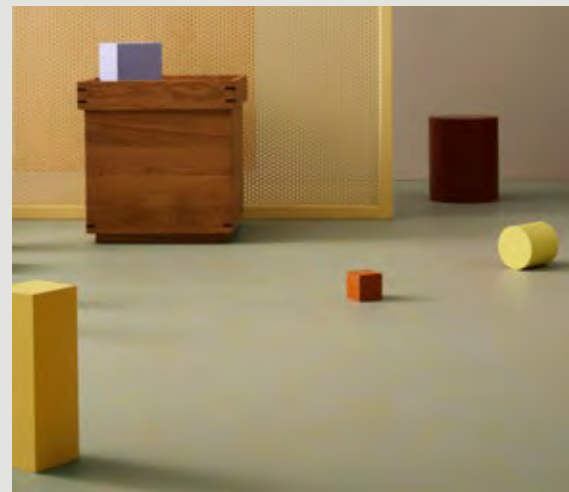
marmoleum®
climate positive
CRADLE TO GATE

marmoleum® WELL-BEING STARTS HERE

In a world where we spend on average 85% of our time indoors, it only feels natural to give full focus on improving the quality of our indoor environment. Every square foot of our schools, healthcare institutions, workplaces, multipurpose centers and living spaces creates an opportunity to bring the best from nature to our indoor surroundings. Therefore, we made it our mission to design and offer products that contribute in a positive way to the health and comfort of the individual by bringing nature in.

Creating a seamless connection between our living spaces and the natural world.

Marmoleum contributes to each and everyone's well-being on many levels. From the natural materials we use to the colors we offer. Its tactility and beautiful colors influence all your senses. Marmoleum brings a touch of nature in our daily lives and reinforces our connection to the environment.



marmoleum® MADE FROM NATURAL RAW MATERIALS

LINSEED OIL

Linseed oil is pressed from the seeds of the flax plant we use.

UPCYCLED MARMOLEUM

Upcycle of our Marmoleum as we take back old floors and grind them to new raw materials for new Marmoleum floors.

WOOD FLOUR

After we add finely ground upcycled wood (wood flour) such as the branches, trunks, and roots of the trees harvested in the certified forestry industry.

JUTE

The fibers from the jute plant are used for the jute mesh carrier on which linoleum is calandered.

PINE ROSIN

Rosin from pine trees which, together with the linseed oil, is heated and creates a linoleum cement.

PIGMENTS

Pigments and natural iron oxide take care of the coloration of the granules.

COCOA HUSKS

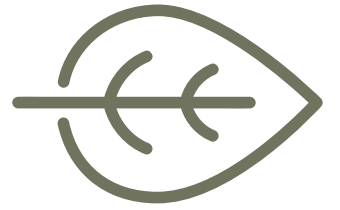
We upcycle waste of the cocoa industry by adding cocoa husks to our marmoleum in the cocoa collection.

LIMESTONE

The next element to be added to a linoleum paste mix is limestone to create linoleum granules.

Marmoleum is plastic free and does not contain any harmful ingredients. Already boasting best in class quality, but with up to 98% use of natural raw materials of which 70% is rapidly renewable, it is a true natural beauty. It is climate positive - cradle to gate, without compensation.

We are fully focused on closing the loop and making sure that our responsibility for our products doesn't stop the moment the material leaves the factory. Therefore we have transitioned Marmoleum from the linear economic business model to meet the principles of the circular economy model: reduce the use of materials, optimize resources, increase the use of recycled materials, and develop take-back programs and end-of-life options.



marmoleum®
climate positive
CRADLE TO GATE

Circular ready

With the planet's resources vanishing quickly, it is of ever-growing importance to ensure a circular economy, where products are developed and manufactured to be recycled and reused for a new life and at the same time prevent and sequester carbon emissions.

Marmoleum is the perfect choice for those looking for a flooring option that is both beautiful and environmentally friendly.



Circular ready, reducing carbon footprint and increasing the use of post consumer recycled content, it can be used over and over again.



Long Lasting and highly durable thanks to the Topshield pro surface finish, the longer the floor can be used, the more circular it is.



Climate positive cradle to gate without offsetting. Produced with 100% green electricity.



PRODUCT DEVELOPMENT & DESIGN

- Marmoleum is designed to go round, it contains recycled content from end-of-life, post installation, cross-industry and closed loop waste streams.
- Timeless design that fits everywhere for everyone, the floor doesn't get outdated.
- Conventional Fit installation lowering total footprint.

LONG LASTING & EASY TO MAINTAIN

- Marmoleum is highly durable, and is designed with circularity in mind.
- The Topshield pro finish makes Marmoleum easy to clean, hard-wearing and resistant to stains.
- Marmoleum is fit for purpose, for many applications, with no wax or polish.

SOURCING & RAW MATERIALS

- Made of up to 98% natural and renewable raw materials.
- All raw materials are obtained following the ethical and sustainable SA8000 and ISO 14001 certification.
- Naturally plastic free and phthalate free flooring.

RECYCLING AND END-OF-LIFE

- Marmoleum is designed with circularity at its core which allows us to recycle end of life material back into new flooring. A closed loop vision is now a reality.
- Of the total recycled content there is always 33% recycled pre-and/or post-consumer flooring waste.
- We've created a fully safe end-of life recycling process with traceable uplifted Marmoleum flooring.
- Every m² saved from incineration after fulfilling its intended purpose, saves emissions to the equivalent of 1.8 kg CO₂.

PRODUCTION AND DISTRIBUTION

- Climate positive, cradle to gate, without the need for offsetting, based on our EPD Marmoleum 2.5mm sheet.
- 100% green electricity.

marmoleum® FORBO'S LINOLEUM BRAND

The Marmoleum collections provide the largest color palette in resilient flooring, a beautiful array of structures and designs that connects the colors of indoor spaces. Made from natural raw materials Marmoleum is the most sustainable resilient floor around.

marmoleum® solid

The four individual finishes provide the foundation for creating pure, distinctive and modern spaces. The Solid collection combines contemporary styling with a versatility that enables designers to design an elegant, natural backdrop to any interior.



marmoleum® marbled

Taking inspiration from the natural world, and offering a spectrum of over 90 colors across the Fresco, Real, Terra, Vivace and Splash ranges, the Marmoleum Marbled collection combines both subtle and striking marbled effects to create a range that provides the perfect backdrop for any commercial interior.



marmoleum® linear

This Linear collection offers a relevant, functional and desirable range that allows you to create comfortable spaces with a natural touch where you truly feel at home. The directional Linear pattern can be used to create a floor that guides people from one space to another, and to indicate an area within a larger space.



marmoleum® modular

The planks and tiles in this collection are created around visuals of wood, concrete, stone and marble with additional accent colors. The Marmoleum Modular collection offers 40"x10" planks, 10"x10" and 20"x20" tiles to allow complete design freedom.



marmoleum® cinch loc seal

The new Marmoleum Cinch Loc Seal collection with waterproof core, provides a beautiful, healthy, easy-to-clean floor that is kid-proof, pet-proof, and waterproof! Available in a variety of colors and 2 versatile formats (12"x12" squares and 12"x36" planks) Marmoleum Cinch Loc Seal easily mixes and matches, allowing your imagination to soar with design possibilities.



FLOORS FOR SPORTS ENVIRONMENTS

Floor coverings in sports and multipurpose rooms have extensive requirements to meet. Ranging from professional and semiprofessional sports to dances, festivities and school exams, multipurpose and sports floor construction needs to fulfill safety and sport functional features. Forbo offers excellent flooring solutions for multipurpose rooms with Marmoleum Sheet, Modular and MCT. For dedicated sports facilities with its Marmoleum Sport collection installed over a point elastic system.



furniture linoleum

Furniture Linoleum is a high-quality, climate positive and natural surface material that emphasizes elegance and sustainability. With its matte finish and soft texture, Furniture Linoleum transforms any surface – furniture, kitchen cabinetry, doors and much more - into a refined and durable design element.



bulletin board®

Pinboard linoleum, or Bulletin Board, offers a practical, simple solution to collect and exchange thoughts and ideas wherever people plan, create and meet. Simply share your thoughts by pinning your idea onto the wall.



SPECIAL FLOORING SOLUTIONS

(special acoustic and static disapative varieties)

In addition to our standard ranges, we also offer a number of linoleum floor coverings developed to meet specific technical or comfort requirements, including static control and sound reduction.





marmoleum® solid

CONNECT WITH MODERN NATURE

Discover a harmonious connection with modern nature through Marmoleum Solid, a climate positive flooring that fosters your well-being. Crafted from natural raw materials, this collection is designed to elevate any space with its refined aesthetics.

The balanced color palette effortlessly blends with contemporary trends while remaining true to its natural essence. Marmoleum Solid enhances any interior, making the surroundings the hero for many years to come.

The story of nature is in our genes!

Cocoa

A completely new concept in Marmoleum. Upcycled cocoa husks have been added to create a visual random effect in a plain unicolored surface. Cocoa is circular ready, it contains 43% combined recycled content and can be used over and over again.

Walton

Named after Frederic Walton, the inventor of linoleum, the Walton range is a series of classic and contemporary solid uni colors that present linoleum in its purest form.

Concrete

A true to life series of concrete colors in modern warm and cool gray neutrals. The range is complemented by a series of 'shimmer' colors that are subtly combined with the grey base.

Piano

A tone in tone scattered design, which when installed resembles a uni color, but with incremental overtime visual retention. The collection is made with both neutral as well as accent colors that all combine very well within the range.



3371 | cement



3369 | titanium



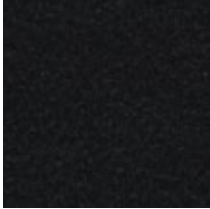
3355 | rosemary green



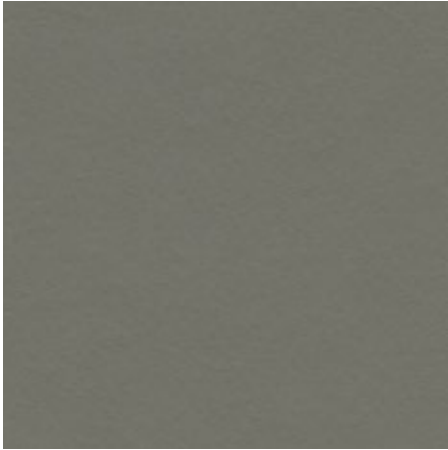
3359 | bottle green



3367 | alloy



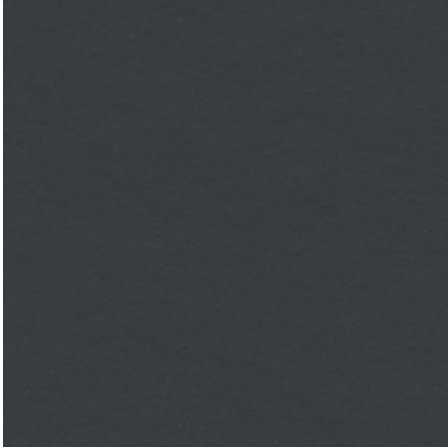
3323 | black



3375 | grey adobe



3376 | peat



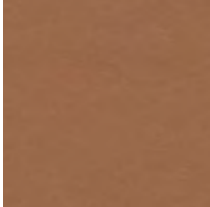
3374 | cobalt grey



3378 | stucco



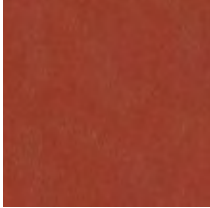
3360 | vintage blue



3370 | terracotta



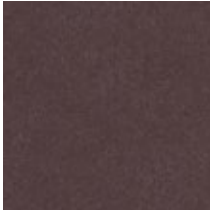
3377 | North Sea blue



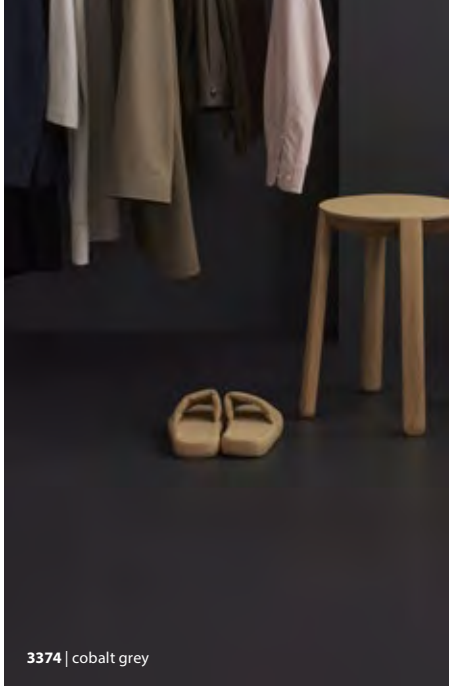
3352 | Berlin red



3358 | petrol



3353 | eggplant purple



3374 | cobalt grey



3584 | white chocolate



3585 | stracciatella



3582 | earl grey chocolate



3590 | meringue



3588 | eucalyptus



3586 | indigo milk



3593 | matcha



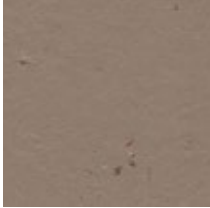
3592 | salted caramel



3583 | chocolate blues



3589 | nori



3580 | milk chocolate



3586 | indigo milk



3587 | curcuma



3591 | black tea



3587 | curcuma



3595 | panna cotta



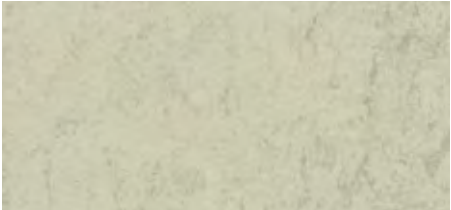
3594 | chia seeds



3596 | hummus



3727 | drift



3757 | Pluto



3758 | shale



3706 | beton

3759 | Mercury

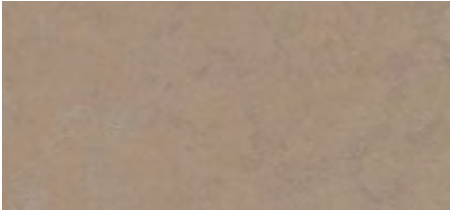


3702 | liquid clay

concrete



3761 | Titan



3727 | drift



3709 | silt



3760 | dust



3708 | fossil



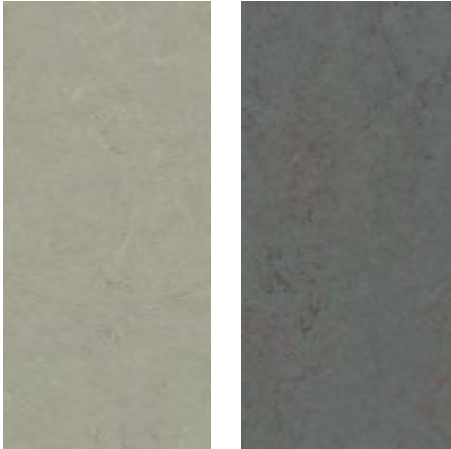
3759 | Mercury 3378 | stucco



3750 | pine forest



3762 | loam



3724 | orbit



3723 | nebula



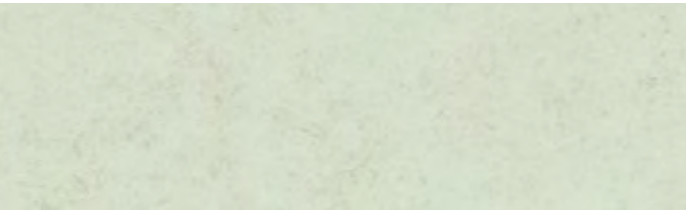
3705 | meteorite



3703 | comet



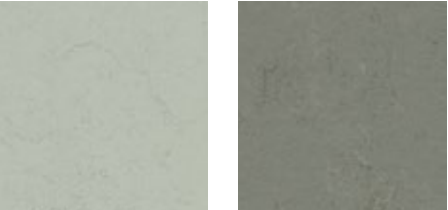
3704 | satellite



3749 | Arctic



3750 | pine forest



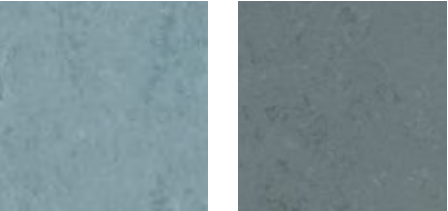
3732 | asteriod



3755 | glacier



3751 | tundra



3753 | blue ice



3756 | Neptune



3752 | taiga



3754 | Sirius



3725 | cosmos



3754 | Sirius

concrete



3733 | yellow shimmer



3736 | green shimmer



3712 | orange shimmer



3763 | blue shimmer

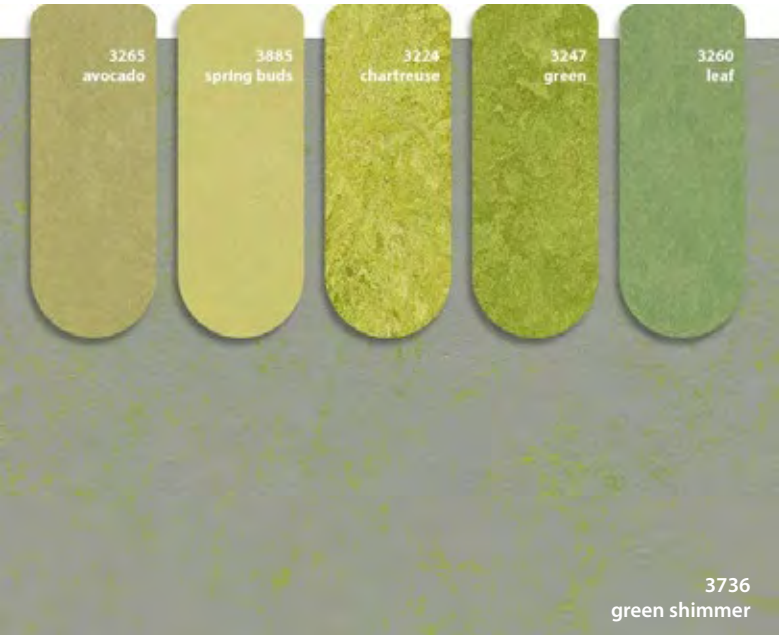
EXPRESSIVE COMBINATIONS

The timeless nature of the Concrete collection makes it ideal for combining with more expressive colors from our other Marmoleum collections. The four shimmer items can provide the ultimate blend within your interior.

Be inspired by the images below in which the shimmer patterns come to life in conversations with other interior materials.



concrete



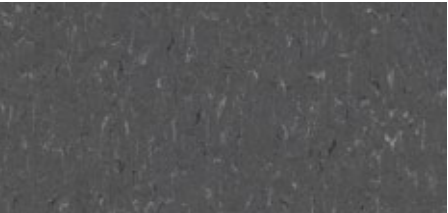
3629 | frosty grey



3650 | polar bear



3630 | angora



3607 | grey dusk



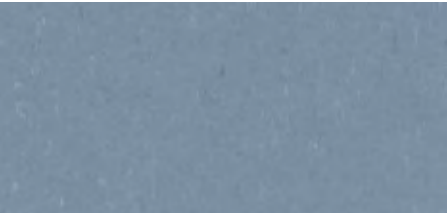
3601 | warm grey



3631 | otter



3645 | Neptune blue



3642 | periwinkle



5586 | honey mustard



3634 | meadow



5585 | apple green



3647 | nettle green



piano

marmoleum® marbled

DEFINING NATURAL SPACES

The Marmoleum Marbled collection provides the broadest color range in resilient flooring, a beautiful array of structures and designs that connects the colors of the indoor space in a subtle and sophisticated manner. There are 5 marbled designs in this collection;

Fresco

A strong palette of tone in tone colors creating a fresh, delicate and balanced aesthetic with a soft contrast and a refined marbled structure.

Real

The 'royal' classic blend of carefully selected colors, developed to create choice and mixes of color ranging from warm neutrals to calm greys as well as exciting brights and on-trend shades.

Terra

A new design with a close and highly contrasting structure inspired by igneous rock types. It creates a sophisticated small scale marble with great soil hiding properties in an authentic color mix.

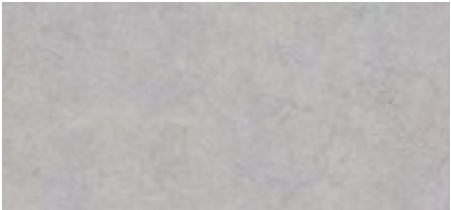
Vivace

Marmoleum's liveliest and most outspoken blend made with six to eight colors to create a chameleon floor that adapts well to a multitude of interiors.

Splash

A new modern, playful design which, from a distance, appears a contemporary light grey solid floor with a slight nuance in tone, yet from up close it reveals surprising colors, offering great combinations of interior elements.

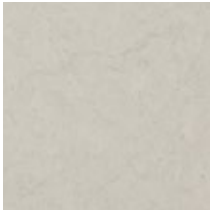




3883 | moonstone | f



3257 | edelweiss | f



3860 | silver shadow | f



3136 | concrete | r



3428 | seashell



3428 | seashell | s



3032 | mist grey | r



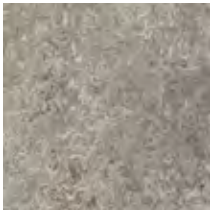
3405 | Granada | v



3421 | oyster mountain | v



2621 | dove grey | r



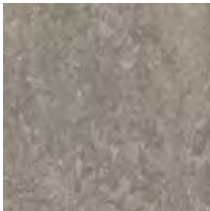
3420 | surprising storm | v



3889 | cinder | f



3053 | dove blue | r



3146 | serene grey | r



5802 | alpine mist | t



3866 | eternity | f



3139 | lava | f



3421 | oyster mountain | v



2629 | eiger | r



3137 | slate grey | r



3872 | volcanic ash | f



2939 | black | f



3858 | Barbados | f



2713 | calico | r



3861 | Arabian pearl | f



3433 | rockpool 3038 | Caribbean



3421 | oyster mountain | v



3120 | rosato | r



3433 | rockpool | s



3141 | Himalaya | r



5804 | pink granite | t



3252 | sparrow | f



3234 | forest ground | r



2499 | sand | r



3038 | Caribbean | r



5803 | weathered sand | t



3246 | shrike | f



5801 | river bank | t



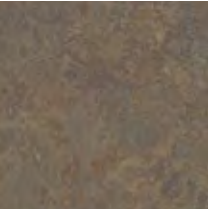
3890 | oat | f



3407 | donkey island | v



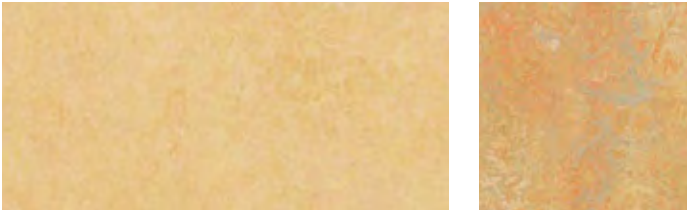
3233 | shitake | r



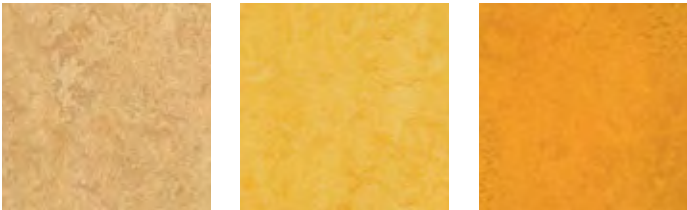
3426 | cork tree | v



3874 | walnut | f



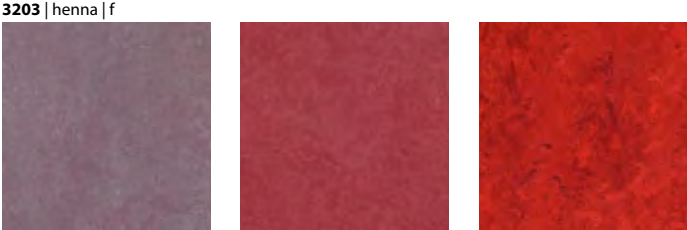
3846 | natural corn | f 3411 | sunny day | v



3173 | Van Gogh | r 3251 | lemon zest | f 3125 | golden sunset | f



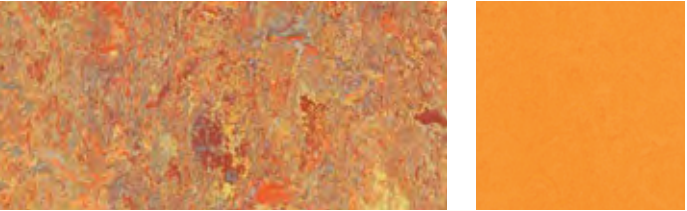
3174 | Sahara | r 3225 | dandelion | r 3847 | golden saffron | r



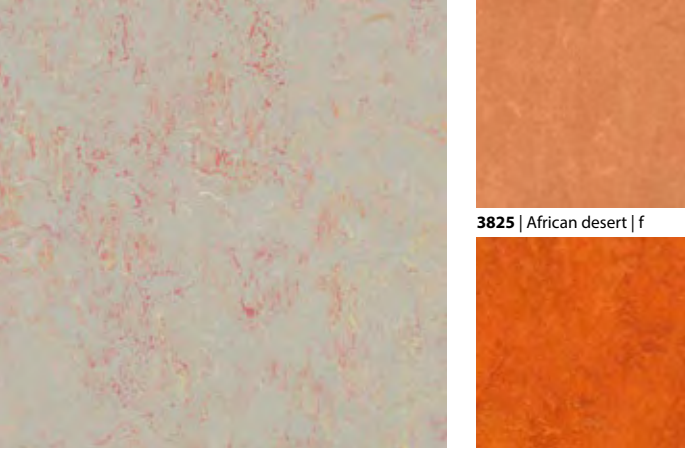
2767 | rust | r 3203 | henna | f 3272 | plum | r



3431 | limoncello | s



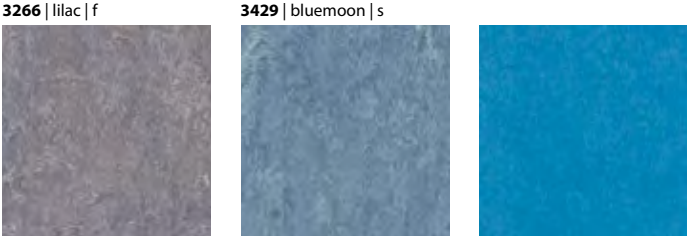
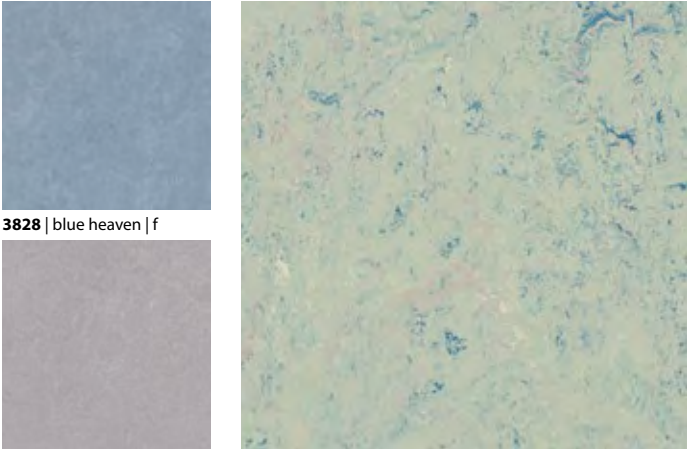
3403 | Asian tiger | v 3262 | marigold | f



3432 | fruit punch | s 3131 | scarlet | f 3263 | rose | f



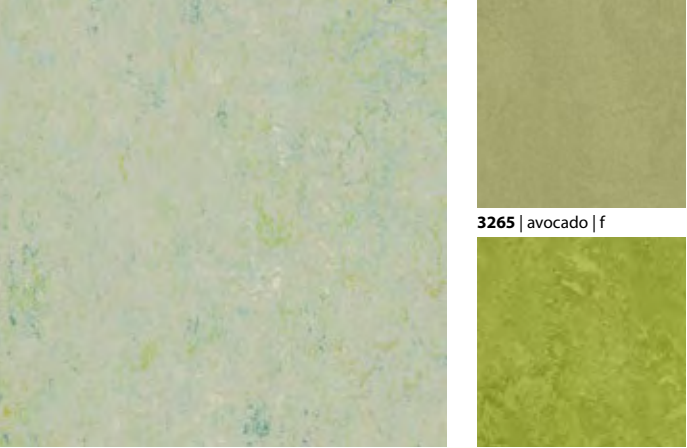
3219 | spa | r 3269 | turquoise | f 3267 | aqua | f



3270 | violet | r 3030 | blue | r 3261 | marine | f



3881 | green wellness | r 3259 | mustard | f



3885 | spring buds | f 3413 | green melody | v 3224 | chartreuse | r



3891 | sage | f 3271 | hunter green | f 3260 | leaf | f



marmoleum® linear

DUALITY OF PLANK & SHEET

Marmoleum Linear sheet and plank are designed to create a contemporary, comfortable environment with a feel for informal, natural settings with a cozy atmosphere. A setting where we will recover faster, feel encouraged to work, share ideas, and to learn.

With an intuitive reference to nature, the Marmoleum Linear sheet and plank collection allows you to create various atmospheres within a space, adjusting to its changing needs. The directional Linear pattern can be used to create a floor that guides people from one space to another, and to indicate an area within a larger space. The neutral, rich colors have the ability to easily adapt and come to life when combined with each other and other materials. With the ability to combine with Linear sheet and plank, the floor can act as a canvas offering endless possibilities.

10" x 40" approx. plank

sheet

t5254 | red horse plank
t5217 | withered prairie plank

3573 | trace of nature sheet



3573 | trace of nature 5250 | blue basalt



5257 | sandy chalk sheet
t5257 | sandy chalk plank



5232 | rocky ice sheet
t5232 | rocky ice plank



5248 | urban silver sheet



5249 | Stonehenge sheet
t5249 | Stonehenge plank



3573 | trace of nature sheet
t3573 | trace of nature plank



5250 | blue basalt sheet



5251 | black glacier sheet
t5251 | black glacier plank



5231 | Cliffs of Moher sheet
t5231 | Cliffs of Moher plank



5252 | ivory shades sheet



5255 | desert sand sheet
t5255 | desert sand plank



5256 | silt stone sheet
t5256 | silt stone plank



5253 | bleached gold sheet
t5253 | bleached gold plank



5217 | withered prairie sheet
t5217 | withered prairie plank



5218 | Welsh moor sheet
t5218 | Welsh moor plank



5225 | compressed time sheet



5254 | red horse sheet
t5254 | red horse plank



5232 | rocky ice sheet t5231 | Cliffs of Moher plank

marmoleum® modular

CREATE YOUR OWN FLOOR DESIGN

The planks and tiles in this collection are created around visuals of wood, concrete, stone and marble with additional accent colors. The designs are featured in a range of color tones that be used to mix and match or on their own.

Marbled

A contemporary classic design where the colors are created to mix and match, creating subtle nuances in the tile floor as it is being designed.

Colour

A traditional and classic Marmoleum tile offer which is ideal for use on its own but works equally well when mixed and matched with other ranges of this Marmoleum Modular collection.

Shade

The shade ranges represents a series base colors with a strong monolithic atmosphere.

More information www.forboflooringna.com/marmoleummodular





Marmoleum Modular Colour
t3053 dove blue
t3362 yellow moss
t3358 petrol



Marmoleum Modular Marble
t3146 serene grey
t3405 Granada
t3232 horse roan



Marmoleum Modular Shade t3711 t3716 t3717



Marmoleum Modular Shade
t3568 delta lace
t3704 satellite



Marmoleum Modular Marble t3216 t3232
Marmoleum Modular Shade t3717 t3718



Marmoleum Modular Marble t2713 calico
Marmoleum Modular Colour t3352 Berlin red



marmoleum® cinch loc seal

KID **PROOF.** PET **PROOF.** WATER **PROOF.**

This healthy flooring solution is primarily made from natural resources including linseed oil, pine rosin, and wood flour mounted onto a waterproof Seal core using a Valinge tongue-in-groove locking system for a secure, glue-free installation. Marmoleum Cinch Loc Seal contains no harmful toxins and its natural ingredients provide inherent anti-static and antimicrobial properties that repel dust and dirt, making it easy to clean and reducing exposure to allergens, while inhibiting the breeding of harmful organisms. Finished with a cork backing, Marmoleum Cinch Loc Seal provides a warm, comfortable flooring surface that is quiet underfoot. It is suitable for all rooms in the home, as well as main street commercial.

More information www.forboflooringna.com/marmoleumcinchlocseal



furniture linoleum

LINOLEUM SURFACES

Furniture Linoleum is more than a finishing material - it is a tactile experience, chosen by those who value both aesthetic and function. Durable yet refined, Furniture Linoleum is a thoughtful choice when you are after timeless design. It is a material that doesn't demand attention but rewards with a natural elegance that ages beautifully, merging sustainability with subtle sophistication.

Beyond its appearance, Furniture Linoleum offers a durable surface that is easy to care, fingerprint proof and that restores itself naturally.

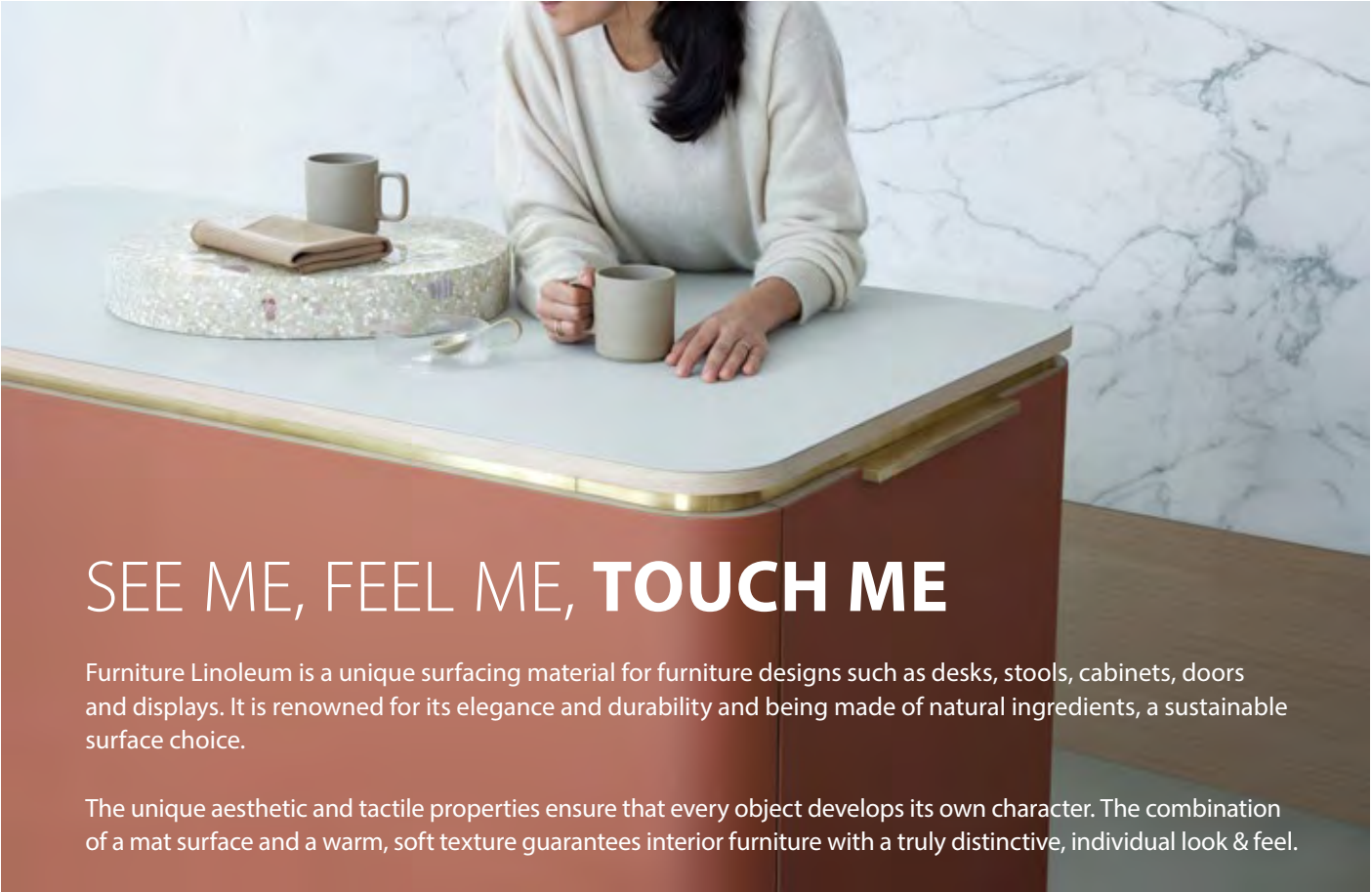
The collection consists of a classic colour range complemented by several warm hues and natural tones and by a number of fresh and stylish colours used in contemporary furniture.



furniture linoleum



furniture linoleum



SEE ME, FEEL ME, **TOUCH ME**

Furniture Linoleum is a unique surfacing material for furniture designs such as desks, stools, cabinets, doors and displays. It is renowned for its elegance and durability and being made of natural ingredients, a sustainable surface choice.

The unique aesthetic and tactile properties ensure that every object develops its own character. The combination of a mat surface and a warm, soft texture guarantees interior furniture with a truly distinctive, individual look & feel.



EASY TO APPLY

Flexible, organic shapes can be created by Furniture Linoleum as it is naturally flexible. It is supplied in a roll format and can be applied both horizontally and vertically, as well as to curved surfaces.

HYGIENIC & ANTISTATIC

The natural composition and the special surface finish ensure that Furniture Linoleum is naturally antistatic. The surface actively resists the build-up of static charges and prevents dust or dirt from sticking to the surface.

NO MARKS FROM FINGERPRINTS

This natural surface linoleum has an earthy, solid quality to it and has one other unique feature: it doesn't show fingerprints!

SIMPLE ELEGANCE

A number of new fresh and stylish colors have been added to the classic color range that complement current design trends.

www.forboflooringna.com/furniturelinoleum



bulletin board® PINBOARD LINOLEUM

From the floor to the wall, Forbo Bulletin Board is a linoleum surfacing material that is ideal for walls and vertical surfaces such as notice or pin boards. It is also a functional sound absorbing aesthetic finish for walls, doors or cabinets and is available in framed formats. Its bacteriostatic properties make it ideal for patient rooms and nurses' quarters.

More information www.forboflooringna.com/bulletinboard



SPECIAL FLOORING SOLUTIONS

In addition to our regular sheet and tile collections featured in the overview presented in this brochure, Forbo also makes a range of special Marmoleum flooring solutions that each serve a specific purpose or provide a solution to a particular additional functionality. For a complete overview of the colours and items in each of these special ranges please consult the Forbo Flooring Systems websites in your region.



ACOUSTIC SOLUTIONS

The best way to reduce sound is at the source. That's why acoustic floors are key when it comes to reducing noise in buildings. Our acoustic linoleum floors create a healthy environment by combining sustainability with excellent sound reduction properties.

The Marmoleum Decibel collection provides the highest impact sound reduction of 18dB. There is a range of items from our regular collections available as decibel from stock, other colors can be made on request.



MARMOLEUM IN OPERATING ROOMS

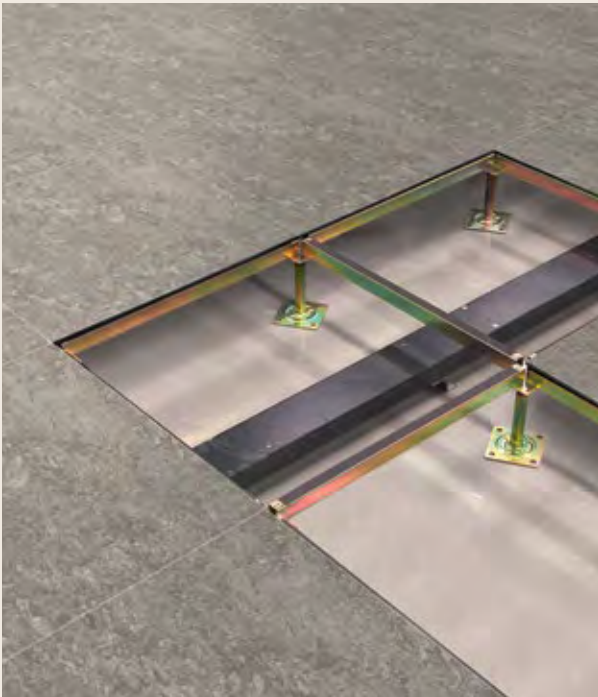
Forbo is dedicated to making it easier to create healthier healing environments by developing a series of solutions called **Forbo EZvations**. As part of this program, Marmoleum flooring system specifically addresses the needs of healthcare operating rooms, combining the time-tested performance of Marmoleum® with puncture-proof **ArmorCove** technology,

coupled with **Marmoweld ETU** paste weld for a hygienic, watertight installation that aids in preventing infection control issues. **Forbo 100 Adhesive System** speeds up installation times allowing for areas to be turned over upon completion utilizing our proprietary **Immediate Occupancy installation System (IOiS)**.

ELECTRICAL RESISTANCE

Marmoleum Ohmex is a static dissipative floor covering that meets higher requirements for electrical conductivity. With an electrical resistance of $1 \cdot 10^6 < R_1 < 1 \cdot 10^9$ Ohm, conforming to EN 1081, Ohmex ensures personal safety and protects equipment that is sensitive to static discharge. Ideal for computer rooms, server rooms and areas with sensitive equipment. Marmoleum Ohmex is 2.5 mm thick and available in six colours.

Pre-cut panels sized 24" x 24" in of all Marmoleum colors can be made for raised access floor manufacturers. These are available on request and minimum order quantities and lead times apply. Please contact your local sales manager for more information.



MARMOLEUM IN SPORTS

Floor coverings in sports and multipurpose rooms have extensive requirements to meet. Ranging from professional and semiprofessional sports to dances, festivities and school exams, multipurpose and sports floor construction needs to fulfill safety and sport functional features. Forbo offers excellent flooring solutions for multipurpose rooms with Marmoleum Sheet, Modular and MCT. For dedicated sports facilities with its Marmoleum Sport collection installed over a point elastic system.

DESIGNING WITH **MARMOLEUM**

Are you looking for something unique on your floor?
Our Waterjet technique allows us to cut the most detailed
and beautiful design inlays into your floor. Standard designs
are available, however, you can have your own branding
or any other design, created especially for your floor.

For Marmoleum Imagine we asked three international designers
to create a series of Marmoleum designs, made possible
by our refined Waterjet cutting technique. The designs can
be customized on request which allows for endless design
possibilities.

Decorative flooring can be functional as well as beautiful. Think
of routing signs at floor level in hospitals or museums. Or zoning
to identify different areas of a building. Signs and Symbols help
people to find their way around or recognise the purpose of the
space they are in. We have created a standard set of signs and
symbols for our Marmoleum floors, but feel free to ask us for
custom designs.

www.forboflooringna.com/designingwithmarmoleum



DEALING WITH A FLOOR IN REAL LIFE

Marmoleum with topshield pro is the ultimate flooring in many ways.

The improved surface finish, developed with the latest technologies and based on our years of experience, keeps the appearance for longer and makes it smoother for easier cleaning.

We can proudly say that Marmoleum is the best resilient floor...naturally.

marmoleum® topshield™ PRO

4x

BEST PERFORMANCE

BEST RESILIENT FLOOR...NATURALLY

WHAT MAKES MARMOLEUM WITH TOPSHIELD PRO 4X BETTER



BEST RAW MATERIALS



BEST LASTING WEAR PERFORMANCE



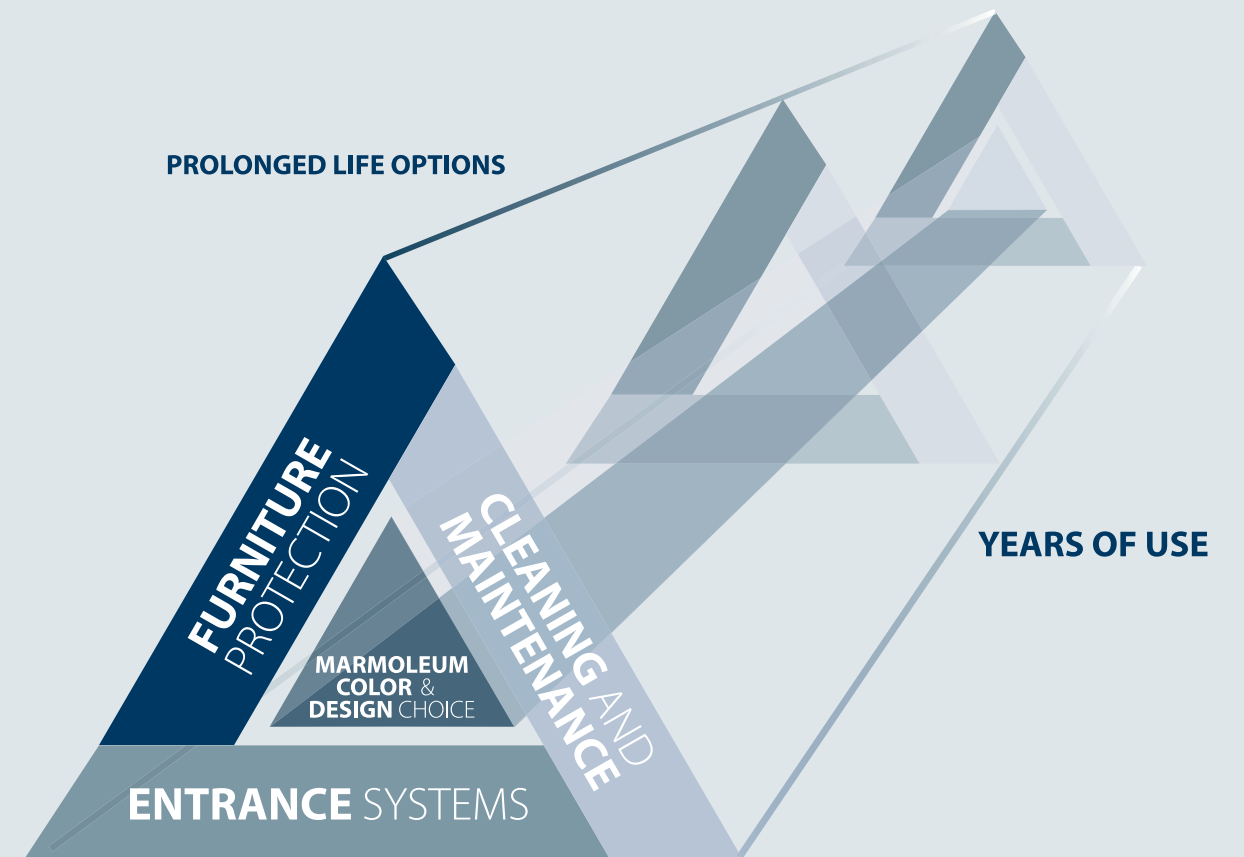
BEST STAIN RESISTANCE



BEST SUSTAINABILITY AND HEALTH

BEAUTY KEPT FOR LONGER

While Marmoleum with Topshield pro is designed to keep its appearance, it's important to follow some simple guidelines that will help keep the beauty of your floor for longer. When you can consider all elements of the triangle, Marmoleum with Topshield pro will do the rest.



FURNITURE PROTECTION



ENTRANCE SYSTEMS



CLEANING AND MAINTENANCE

EZVATIONS BY FORBO FLOORING

Do you consider your current flooring an asset or a liability?

Introducing Forbo Flooring EZvation Solutions

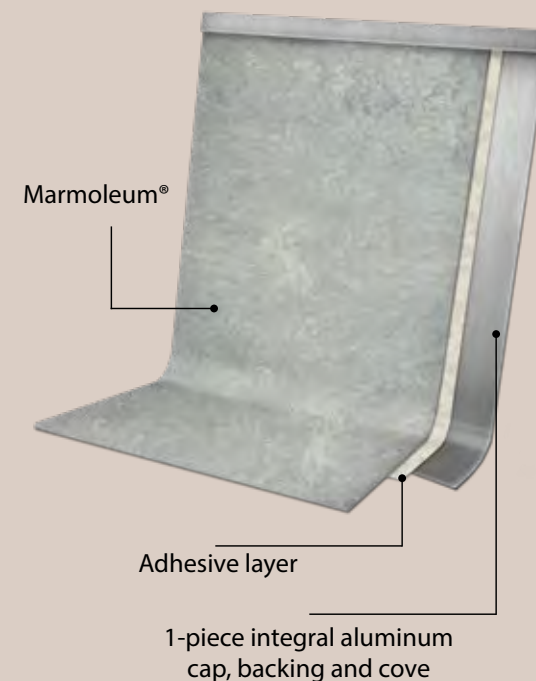
We have listened to your frustrations and developed a series of solutions that will turn your next floor from a liability into an asset. Forbo EZvations include our Forbo 100 adhesive system, ArmorCove and Marmoweld...EZ to Use (ETU) products which focus on reducing costs through efficient use of materials and improved labor efficiency.

- Provide immediate-on occupancy
- Reduce installation downtime
- Make the existing labor more efficient by simplifying labor skills required
- Eliminating moisture mitigation costs
- Provide hygienic, watertight floors
- Eliminate cracked and punctured coving problems
- Assist in the prevention of infection control concerns
- Increase long term flooring performance

ARMORCOVE

Our patented preformed Marmoleum coving solution for safe, durable flash coving that is easy to install and maintain. Providing a puncture proof solution to protect your floors from damage caused by maintenance machines, movement of equipment and point loads, such as chairs and desks.

- Guaranteed puncture-proof for life
- Prefabricated from a single piece of aluminum to form an integral cove cap, back and cove radius
- Tight radius allows cleaning equipment to get closer to the wall and clean more thoroughly, improving hygiene and facility appearance while reducing opportunity for damage
- Provides hygienic, watertight installation that aids in preventing infection control issues from water intrusion
- Faster installation at similar or lower cost versus traditional flash cove
- Reduces the time and costs associated with room turns when used in conjunction with Forbo 100 Adhesive Systems



GREAT LOOKING **SEAMS**

Marmoleum installed using conventional fit seams provides significant initial savings versus PVC floors that require heat welding for all applications. Hygienic and Watertight installations can be achieved with Marmoleum without welding.

For critical care areas requiring monolithic or seamless installations such as surgical/procedure areas or those areas required by code Forbo Marmoweld ETU color-matched paste weld is the preferred seaming method for Marmoleum.

- Cost savings over traditional heat welding
- EZ to use
- The elimination of likely damage caused by grooving, burning and scalping seams from traditional heat welding
- Improved aesthetics and performance over standard heat welded floors

THE DYNAMICS OF A BUILDING

There is an increase in demand for transitional environments; spaces need to be able to evolve and adapt to new functions. These constantly changing spaces require walls and floors that can perform as a chameleon, with timeless colors and basic materials. The trends and changing mindsets inspired the Forbo Design team to analyze the different dynamics taking place within a building.

Five themes were identified; **receiving, moving, connecting, concentrating and recharging**, with each one referring to the different identities a space can have. They express a certain state of a person or an activity taking place within the building.



RECEIVING

The theme 'receiving' describes the scenario of a person entering a building; making a transition from the outdoors to the indoors. A space where one should feel welcome and is accessible and transparent as first impressions are key. This is the area of the building that should clearly represent the 'feel' of the brand and meet the expectations of the client to make them feel comfortable and at home.

MOVING

'Moving' represents the action towards the destination and the purpose of why someone is in a building. Orientation is priority, so these areas need to be clear to read and offer guidance even when one is stressed. The space needs to be legible and aid with wayfinding.

CONNECTING

The dynamics of a 'connecting' space signifies areas where you will connect with other people within a building, such as open public spaces for spontaneous interactions or semi open spaces for dialogues or brainstorming. These areas allow for an extra energy boost or to give the brain time out.

CONCENTRATING

For 'concentrating', the attention is on the individual and avoiding unwelcome distractions. These are secluded spaces for privacy and focus, and while concentrating, people need a muted ambiance. Therefore, color palettes in this area of a building should be subtle and quiet.

RECHARGING

'Recharging' is connected to mindfulness and describes relaxed environments where people can let down their guard and be themselves. This area of the building should reflect a home-like setting, to allow people to refresh and recharge. Light and fresh shades should be used here, encouraging people to take a break, breathe and escape.

HOW CAN WE HELP YOU?

We have given you all the benefits as to why a Marmoleum floor is the best solution for your project. We are happy to help you specify this further. Use our various tools or contact us directly.

More information about Marmoleum

Read the full Marmoleum story on our website.

forboflooringna.com/marmoleum

Floor visualizer

Would you like to visualize the floor you have in mind in a specific room or even your own project? Please go to our floor visualizer and play around with designs and images.

forboflooringna.com/floorplanner

Sample service

If you would like to receive a sample, please go to our website or email your request to

samples.na@forbo.com

Installation, cleaning & maintenance

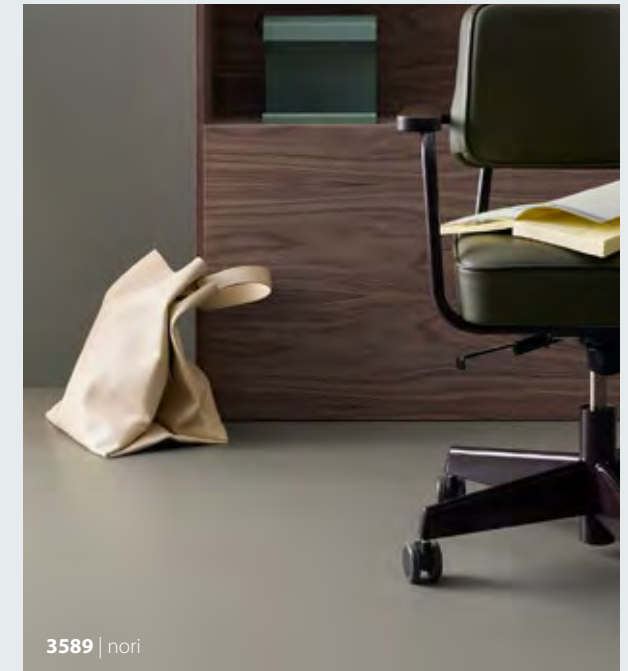
On our website you will find videos, PDF downloads and more to help you find the best way to install Marmoleum or to learn how to clean and maintain your floor. Our technical teams are just a phone call away should you still have questions.

forboflooringna.com/marmoleumfloorcare

Inspiration & references

If you would like to see how others apply Marmoleum, then please have a look at the 'Inspiration & references' part of our website.

forboflooringna.com/references



Protect your floor

To complement the performance of a Marmoleum floor, we offer entrance systems such as Coral and Nuway barrier matting solutions.

forboflooringna.com/entranceflooring

Applying our Forbo Furniture Protectors to the base of your chairs and furniture protects the flooring surface, reduces noise, and helps keep the appearance of your floor for longer.

<http://forboflooringna.com/furnitureprotection>

Contact

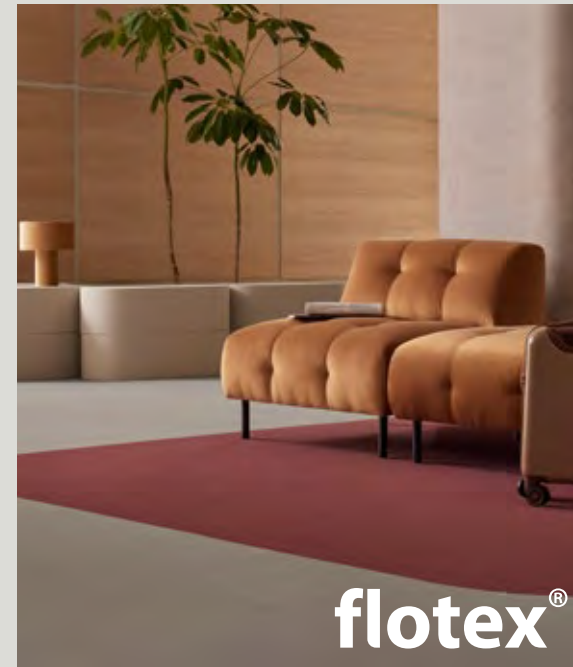
Should you have remaining questions, please don't hesitate to contact us via; forboflooringna.com/contact or send an email to

info.na@forbo.com





FLOORING SOLUTIONS ENTRANCE TO EXIT



flotex®

Flotex combines the practicality of a resilient flooring with the slip resistant and acoustic properties usually associated with textiles.

Flotex is strong and hygienic, and, being completely waterproof, Flotex is also the only truly washable textile floor covering.



coral®

The first steps in protecting your building.

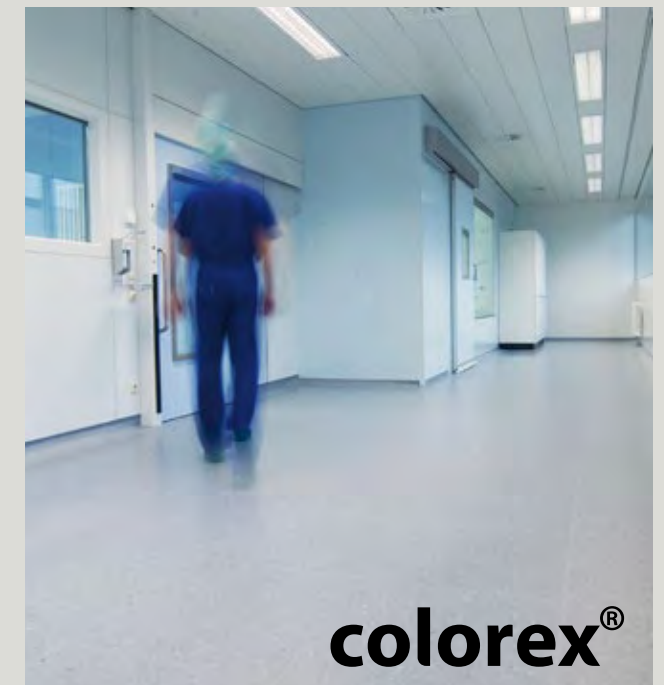
By stopping up to 95% of walked in dirt and moisture, our Coral entrance floors can prolong the life of your floor as well as greatly reduce cleaning costs and the risk for slipping.



eternal step

Safety. Design. Confidence.

For the Step collection Forbo introduces its new, unique and innovative slip resistant "Step Crystals" that combine excellent non slip properties with a clear and bright visual.



colorex®

Colorex EC is Ideal for laboratories, IT-rooms and cleanrooms.

Colorex EC satisfies the strictest requirements for particle release behaviour, helping to reduce any threat of contamination.



Forbo Flooring Systems is part of the Forbo Group, a global leader in flooring and movement systems, and offers a full range of flooring products for both commercial and residential markets. High quality linoleum, vinyl, textile, flocked and entrance flooring products combine functionality, color and design, offering you total flooring solutions for any environment.

Forbo Flooring Systems

visit us online: www.forboflooringNA.com | email: info.na@forbo.com

North American Headquarters: 8 Maplewood Drive, Humboldt Industrial Park, Hazle Township, PA 18202 | ph: 1-800-842-7839 | fax: 570-450-0258

Canadian Office: 3983 Nashua Drive Unit #1, Mississauga, Ontario L4V 1P3 | ph: 1-800-268-8108 | fax: 416-745-4211

Find us on



creating better environments



FLOORING SYSTEMS