



tessera[®] diffusion

creating better environments

forbo

FLOORING SYSTEMS

Highlighting the transition from strong geometric towards a softer more organic aesthetic, Diffusion is a play on light and shape, blurring the boundaries of the square. Its crystalline structures soften hard edges adding highlights and texture, whilst its multi faceted pattern is in harmony with the many aspects of our working lives.

- 10 fresh commercial colourways, ranging from very dark to very pale, achieving high LRV
- Manufactured with Refresh™ fibre from Universal Fibres, Refresh™ is 100% solution dyed nylon 6.6 including recycled pre and post-consumer carpet fibre, delivering exceptional performance and sustainability
- Meets Ska rating criteria for M12 soft floor coverings
- Contains 66% recycled content by weight
- 10 year guarantee
- Also available with SOFTbac® secondary backing



66% recycled content by weight



textured loop construction for structure and pattern

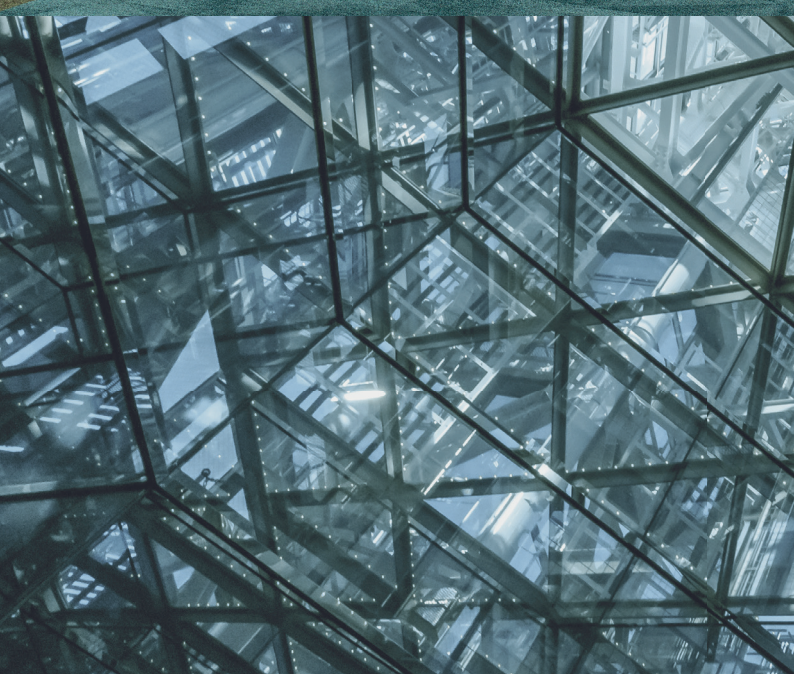


50cm x 50cm carpet tile



2015 | arctic voyage

2008 | forest trail



2015 | arctic voyage



2003 | glacial flow



2000 | space quest



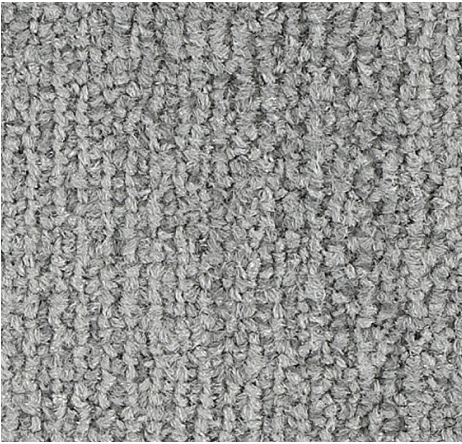


2007 | perpetual motion

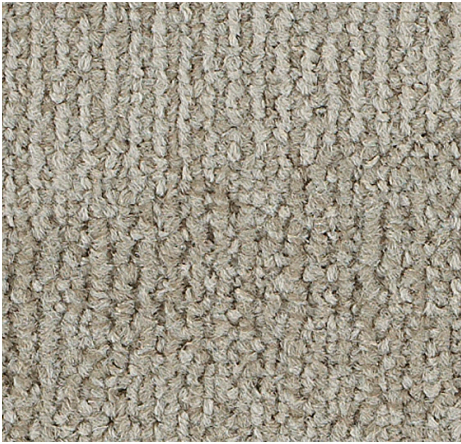


2006 | passing place

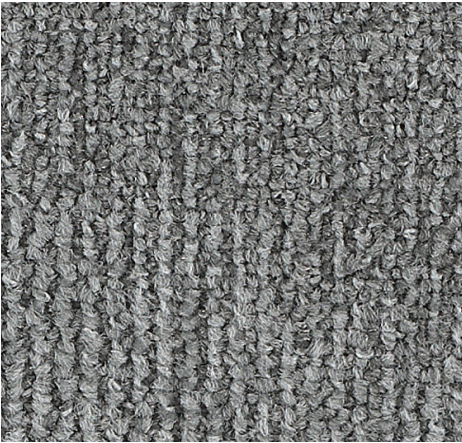
Diffusion colour options



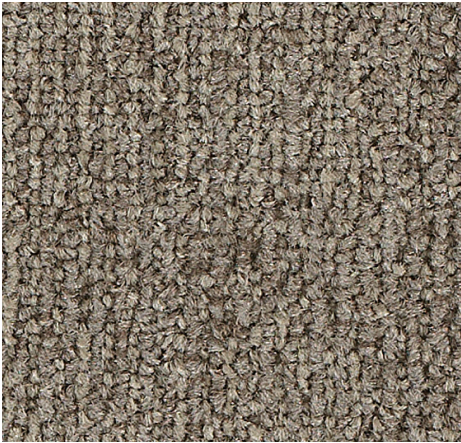
2003 | glacial flow LRV 27



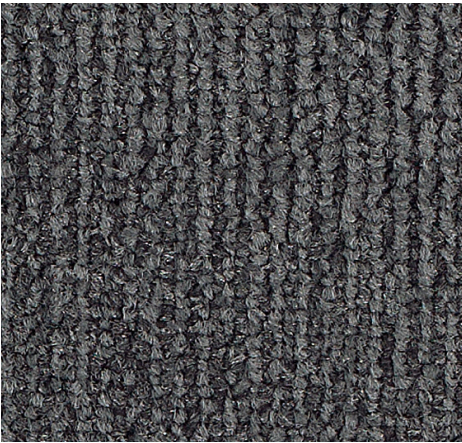
2007 | perpetual motion LRV 34



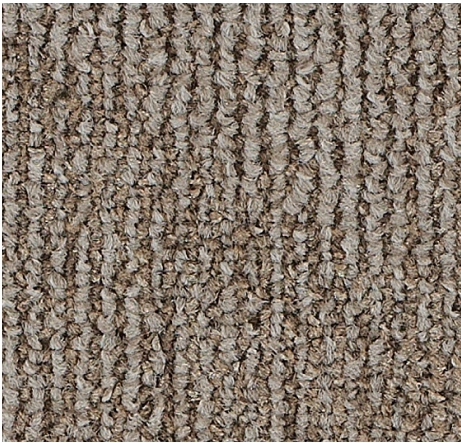
2002 | paradigm shift LRV 19



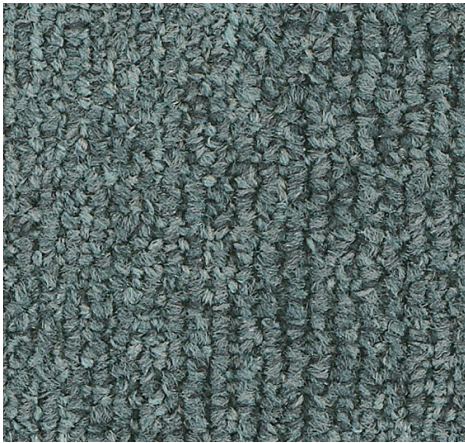
2006 | passing place LRV 18



2001 | magnetic flux LRV 8



2005 | nomadic journey LRV 18



2015 | arctic voyage LRV 14



2000 | space quest LRV 4

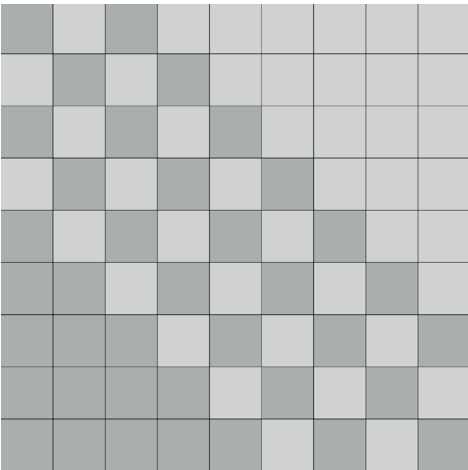
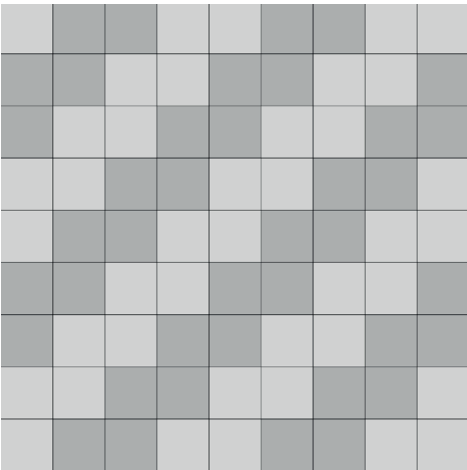
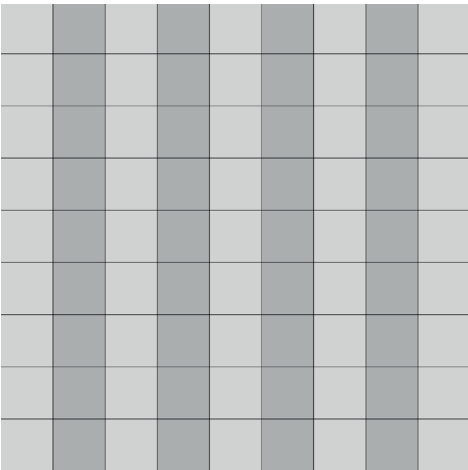
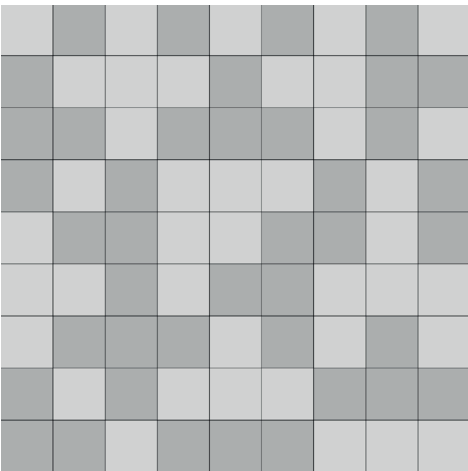
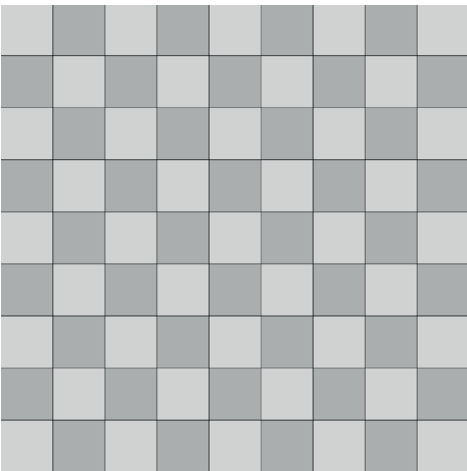
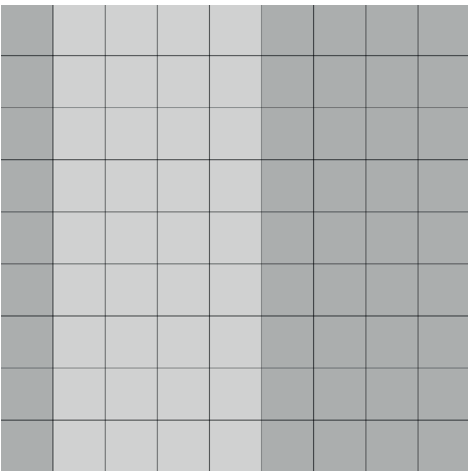


2004 | pivotal moment LRV 8

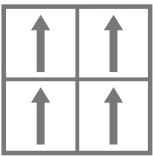


2008 | forest trail LRV 13

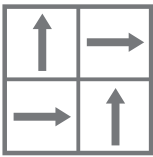
Diffusion installation ideas



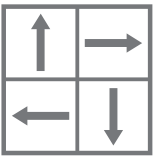
Diffusion fitting options



monolithic



quarter turn



tessellated





Forbo Environmental Data Sheet

Product name	Tessera Diffusion
Product description	Tessera Diffusion reflects an evolution towards softer more organic geometry observed in nature. Inspired by crystalline structures, the fractal shapes fade in and out creating appealing contemporary floor spaces. Diffusion complies with all requirements of EN1307: Textile Floor Coverings – Classification of Pile Carpets.
Manufacturing location	Bamber Bridge, United Kingdom
Site accreditation	ISO14001, ISO 9001, ISO 45001, SA8000®



Our footprint – how it’s made

Environmental data	
Total recycled content of product by weight	66%
Post industrial recycled content	66%
% renewable electricity & biogas used	100%

Independent assessment and rating	
ISO 9001 Quality Management System	
ISO 14001 Environmental Management System	
ISO 45001 Occupational Health and Safety Management	
Diffusion is made in an SA8000® certified facility	
	

Carbon footprint		
Estimated carbon footprint using data from Environmental product declaration according to ISO 14025	Raw materials and production	8.74 kg CO ₂ eq/m ²
	Use (1 year)	0.804 kg CO ₂ eq/m ²

Health and well being	
Air quality CHPS 01350 AgBB/DiBt	Tessera products comply to 01350 Indoor Air Quality Standard Pass

Impact sound reduction	22 dB
------------------------	-------

Installation	
Recommended adhesives	<p>Carpet tiles must be adhered using an all over tackifier adhesive system: Forbo Eurocol 542 Eurofix Tack Plus, a solvent free release system, is recommended. Where periphery tiles are not constrained by fixtures e.g. walls, edge strips etc, it is recommended that such tiles are adhered using a permanent adhesive; Forbo Eurocol 640 Eurostar Special, again a solvent free adhesive is recommended.</p> <p>Adhesives must be applied according to the manufacturer’s instructions and it is essential that tackifier adhesives are allowed to dry to a tacky finish before laying the carpet tile. Failure to do so could result in a permanent non-release bond.</p> <p>Where contribution to credits for BREEAM sections HEA2 and HEA9 are required then low emission adhesive Eurocol 542 tack plus should be used. If a permanent bond is required, please use Eurocol 640 Eurostar special.</p>

Forbo Environmental Data Sheet – continued

Maintenance

Appropriate care and maintenance is essential to longevity and appearance retention and is necessary to maintain product warranties. Refer to the clean and care instructions available from Forbo Flooring Systems.

All Tessera products are suitable for cleaning using the Dry Fusion technique. Dry Fusion uses 95% less water than the normal system of cleaning, produces no waste product, uses non-hazardous and biodegradable cleaning solutions and all packaging and materials within the Dry Fusion System can be recycled.

End of life

Products suitable for reuse, recycling, downcycling and waste to energy. Forbo Flooring Systems works with recycling companies to clean, reuse and recycle used carpet tiles in the UK.

Contribution to Green Building Schemes

BREEAM 2014

BREEAM ratings	Building Type					
	Office A	Education A	Health A	Domestic A	Retail (Durability) A	Retail (Fashion) A+

BREEAM 2018

Compliant through declaration number 4788294459.124.1 Valid until April 2024

LEED (version 4)

Potential direct or indirect contribution to following categories and credits:	Materials and Resources	
		Building product disclosure and optimisation - sourcing of raw materials - up to 1 point
		Construction and demolition waste management up to 2 points
	Indoor environmental quality	Low emitting materials up to 3 points
		Acoustic performance up to 1 point
















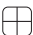
Forbo design principles (Reduce, Recycle, Reuse, Renew)

Reduce	Investment in an extruder has reduced our bitumen usage by 50%.
Reuse	Yarn ends are rewound and used in the production of new Tessera Carpet tiles. All Tessera samples can be returned allowing them to be reused or recycled, reducing the need for virgin materials.
Recycle	Yarns, backing cloth, fillers and latex all contain recycled materials. All tufted Tessera carpet tiles contain at least 56% recycled content by weight.
Renew	All Tessera carpet tiles manufactured at Bamber Bridge are made with 100% renewable forms of energy (renewable electricity & biogas).





visit www.forbo-flooring.co.uk/downloads for more information

Technical specification

Tessera Diffusion carpet tiles meet the requirements of EN 1307

Description		Tufted multi-height loop pile carpet tile	
	Dimensions	EN 994	50cm x 50cm
	Total thickness	ISO 1765	6.5mm ± 10%
	Pile height	ISO 1766	3.7mm ± 0.5mm
	Collection size	10 colourways. 4m² per box	
	Commercial use	EN ISO 10874	Class 33, Suitable for any type of heavy contract application
	Pile composition	100% Universal Fibers sm Refresh tm polyamide 6.6	
	Dye method	100% solution dyed	
	Stitch density	ISO 1763	217,120 per m² ± 10%
	Pile weight	ISO 8543	570 gsm ± 10%
	Total weight	ISO 8543	4,085 gsm ± 10%
	Primary backing	Polyester/Nylon	
	Secondary backing	ProBac recycled mineral filler with low amount of modified bitumen, and polyester fleece. Contains over 76% recycled content. Also available in SOFTbac® secondary backing.	
	Castor chair use	ISO 4918	Minimum R Value: ≥ 2.4
	Light fastness	EN ISO 105-B02	≥ 5
	Dimensional stability	EN 986	≤ 0.2%
	Impact sound reduction	ISO 10140-3	ΔL _w = 22 dB
	Creating Better Environments		
	Renewable Energy	All Tessera tufted carpet tiles are manufactured using 100% renewable energy (electricity & biogas)	
	Recycled Content	Diffusion carpet tiles contain 66% recycled content by weight	
	Indoor Air Quality	Diffusion carpet tiles comply to 01350 Indoor Air Quality Standard	
	Back to the Floor	Installation off cuts can be collected via Back to the Floor	
	Ska Rating	Diffusion meets Ska Rating criteria for M12 soft floor coverings in office, retail and higher education schemes	
	Prodis-GUT	www.pro-dis.info	117BFE1A
	Installation method	Monolithic, quarter turn or tessellated	

Diffusion carpet tiles meet the requirements of EN 14041

	Product code	EN 14041	1170100-DoP-101
	Reaction to fire	EN 13501-1	B _{fl} -s1, L, NCS
	Slip resistance	EN 13893	μ ≥ 0.30
	Body voltage	ISO 6356	< 2.0 kV

All Forbo Flooring Systems' sales organisations and manufacturing sites worldwide have certified Quality Management Systems in accordance with ISO 9001.
All Forbo Flooring Systems' manufacturing plants have certified Environmental Management Systems in accordance with ISO 14001.
Tessera Diffusion is manufactured in a facility certified to SA8000® and ISO 45001.

Contact us



Forbo Flooring Systems is part of the Forbo Group, a global leader in flooring and movement systems, and offers a full range of flooring products for commercial and affordable housing and new build markets. High quality linoleum, vinyl, textile, flocced and entrance flooring products combine functionality, colour and design, offering total flooring solutions for any indoor environment.

Whilst Forbo Flooring UK Limited does its best to ensure that the contents of this brochure are correct and accurate at the time of publication, to the fullest extent permitted by law, Forbo Flooring UK Limited makes no, and expressly disclaims all, guarantees of any kind, express or implied in respect of the information, content, materials or products displayed in this brochure and does not represent that the information is accurate, complete or current and you are advised to visit our website at www.forbo-flooring.co.uk for up-to-date details or corrections to such contents.

UK

Forbo Flooring UK Limited
High Holborn Road
Ripley
Derbyshire DE5 3NT
Email: info.flooring.uk@forbo.com

London EC1 showroom

79 St John Street, Clerkenwell
London EC1M 4NR
Tel: 0207 553 9300
Email: ec1@forbo.com

For commercial enquiries:

If calling from the North,
London & South East
Tel: 0800 0282 162
bcs.flooring.uk@forbo.com

If calling from Scotland,
Midlands & South West
Tel: 0800 0935 258
kcs.flooring.uk@forbo.com

Nuway enquiries:

Tel: 01773 740 688
efs.flooring.uk@forbo.com

Residential enquiries:

Tel: 0800 0935 846
Email: krccs.flooring.uk@forbo.com
www.forbo-flooring.co.uk



Samples can be ordered over the phone,
by calling **0800 731 2369**
(Mon - Fri, 8.30am - 5.00pm)

Samples can be ordered 24/7 by visiting
www.forbo-flooring.co.uk/samples
or by emailing **samples.uk@forbo.com**

Ireland

Forbo Ireland Ltd
2 Deansgrange Business Park
Blackrock
Co Dublin
Tel: 00353 1 2898 898
Fax: 00353 1 2898 177
Email: info.ireland@forbo.com
www.forbo-flooring.ie

Registered office:

Forbo Flooring UK Limited
High Holborn Road
Ripley
Derbyshire DE5 3NT
Registered in England 9200318