

ADHESIVES
MANDATORY

	Adhesives	Weight	Consumption m²	Spreader	Waiting time	Opening time	Observation
Marmoleum	418 Euroflex Lino Polaris	14 kg	400 g	B1	10 min	30 min	For all Marmoleum ranges in sheet with jute.
	611 Eurostar Lino Plus	11 kg	280 g	B1	10 min	30 min	For all Marmoleum ranges in sheet with jute, GREEN (EC1+).
	644 Eurostar Multi Plus	12 kg	390 g	B1	15 min	40 min	High-performance GREEN (EC1+) fiber-reinforced universal adhesive.
Marmoleum Modal Marmoleum Decibel	540 Eurosafe Special	13 kg	350 g	A2	15 min	60 min	High-performance technical adhesive.
	640 Eurostar Special	13 kg	250 g	A2	15 min	60 min	GREEN (EC1+), high-performance technical adhesive.
	528 Eurostar All Round	13 kg	300 g	A2	15 min	40 min	Multi-purpose EC1 construction adhesive .
	644 Eurostar Multi Plus	12 kg	390 g	B1	15 min	40 min	High-performance GREEN (EC1+) fiber-reinforced universal adhesive.
Marmoleum Sport	611 Eurostar Lino Plus	11 kg	280 g	B1	10 min	30 min	To be combined with 863 eurofinish sport (sport lacquer system) and use 897 euroclean sport for an initial and complete maintenance.
Marmoleum Ohmex	615 Eurostar Lino EC	11 kg	260-300 g	S2	10 min	20 min	To be combined with 041 Europrimer EC and 801 Adhesive copper tape.
Bulletin Board	611 Eurostar Lino Plus	11 kg	350 g	B1	10 min	30 min	Apply 611 over the entire surface and, for borders, apply 650 over a distance of approx. 30 cm (to reinforce large widths).
	650 Eurostar Fastcol	7,5 kg	500 g	Tools included	1-2 hrs	4 hrs	

520 linoleum doctor

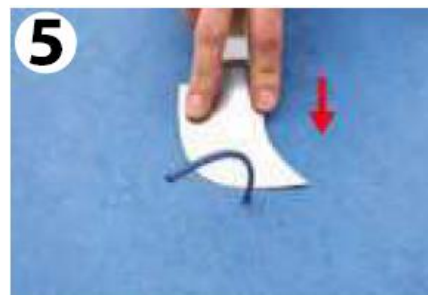
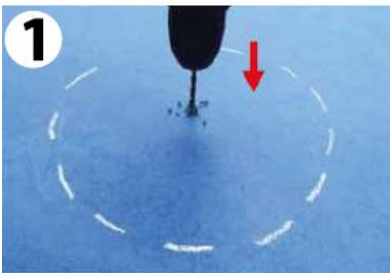
Ref. : 520

520 Docteur Lino renovation adhesive is a kit for repairing bubbles on the underside of Marmoleum with jute or polyolefin backing (Marmoleum decibel).

Kit containing a 500 ml bottle of adhesive and 2 syringes



- 1 Drill a hole in the middle.
- 2 Inject Linoleum Doctor adhesive.
- 3 Hammer inwards with a hammer.
- 4 Remove adhesive excess.
- 5 Heat up colour matching welding rod, fill it in and cut off.



WELDING

IMPORTANT

LINO WELDING ROD

Ref. : Uni : LD + floorcovering ref

Ref. : Multicolor : MC + floorcovering ref

*Available in Uni or Multicolor depending of the references.

Welding allows the junction between strip edges.

Marmoleum achieves E2 rating.

A groove is formed, and the weld is then applied using a hot air gun fitted with a LINO fast welding nozzle.



Coil of 50 m

PROFILES

IMPORTANT

Cove former

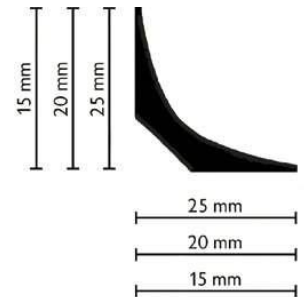
Ref. : 3009 blanc / 3109 noir / 3209 noir

· 3009 = 15 x 15 : this profile is used vertically in internal corner to that the wall covering matches corners perfectly.

· 3109 = 20 x 20 : this profile is used at the bottom of partitions.

Provides backing for the flooring to rise with a rounded profile, thus making corners last longer and improving aesthetics, while preventing perforation.

· 3209 = 25 x 25 : same using as the 20x20 profile but appropriate for more rigid flooring.

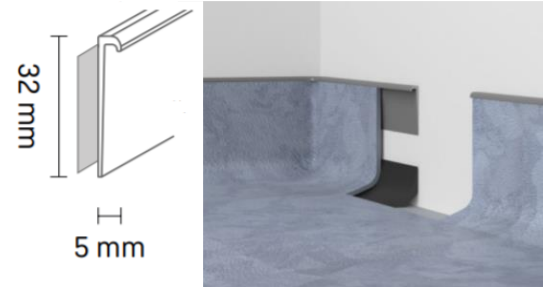


Box of 20 lengths of 2,5 m namely 50 m/box.

PVC capping profile EL3.5

Ref. : XXXXEL3.5

PVC capping strip is the right finishing profile when you would like to have a perfect finishing with coving installation. Ideal for Linoleum floorcovering.



Box of 25 lengths of 2,5 m namely 62.5 m/ box



0110 - noir



0146 - gris foncé



1137 - blanc



0132 - brun



0130 - beige

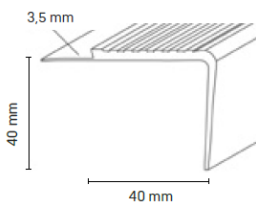


0138 - gris clair

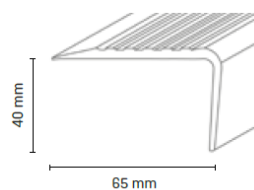
Stairnosing to install before and after floorcovering

Phosphorescent PVC step nose with structured support surface to be implemented before (****TF) or after (****TJ) the flooring is laid.

Box of 10 lengths of 2,5 m namely 25 m/box



****TF (before)



****TJ (after)



0110 noir



0138 gris clair



0146 gris foncé



0130 beige



0132 brun

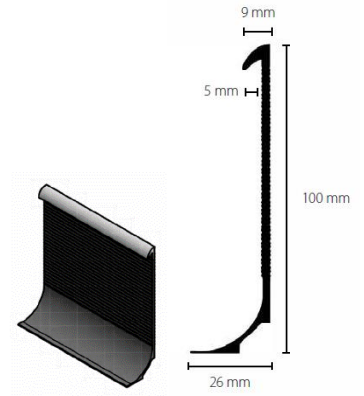
SKIRTINGS

SUGGESTED

Soft complete skirting for old and new support

Flexible finishing profile for corner support and finishing. Its flexibility makes it suitable for both new and old substrates.

Box of 20 lengths of 2.5 m namely 50 m/box



Marmoleum® click skirting

Ref. : MFxxxx

Marmoleum® Click MF skirting of 55mm in height is a range of MDF skirting with Marmoleum facing. Installation is done with skirting glue gun or a laying adhesive. Can be installed with the mounting adhesive type 232 eurosol montage.



Box of 4 lengths of 2,4 ml namely 9,6 ml



Mounting adhesive

Ref. : 232 eurosol montage

Allow to install Marmoleum click skirting.

1 cartridge = 20 m of skirting

Box of 12 cartridges of 310 ml

