



Acoustic vinyl

sarlon[®] 15dB | 19dB  Revestimiento para colar

modul'up[®] 19dB | compact  Revestimiento autoportante



creating better environments

Forbo

FLOORING SYSTEMS

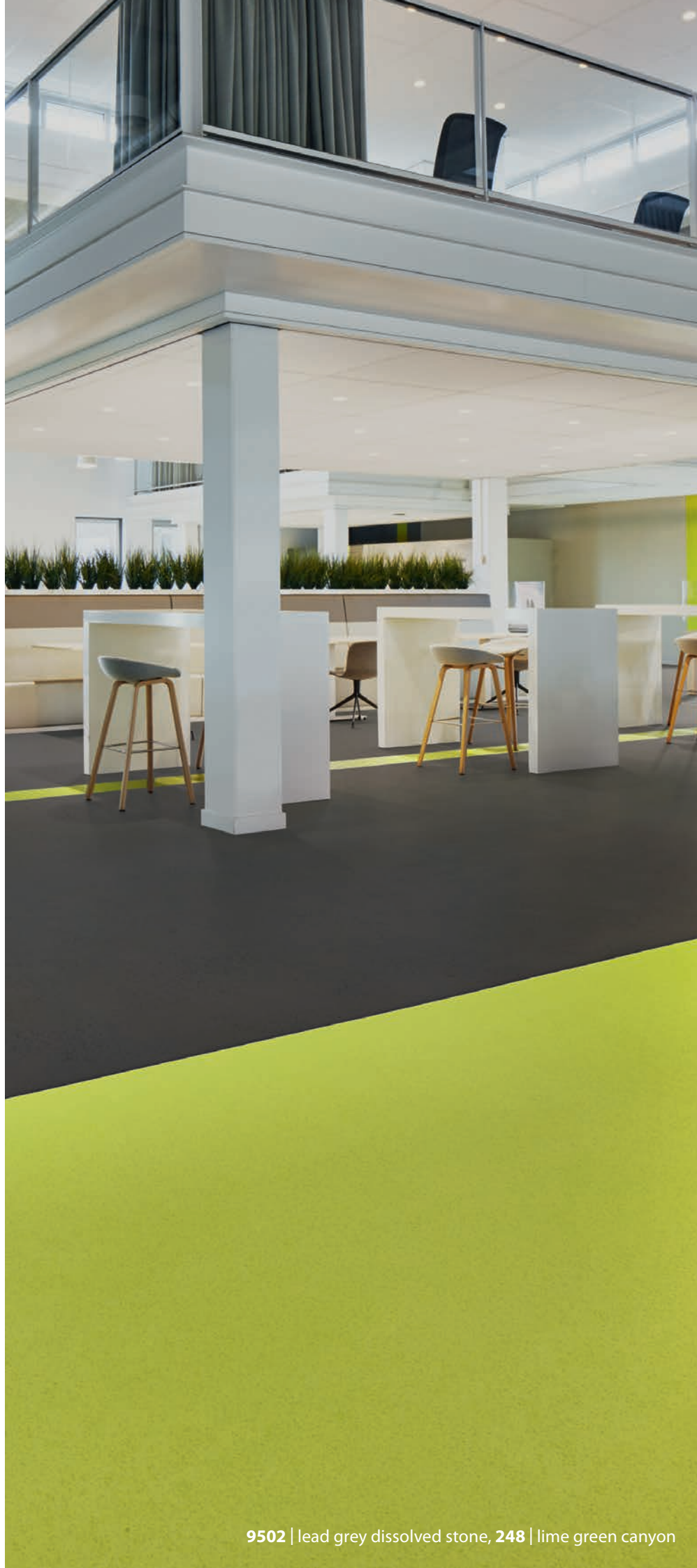
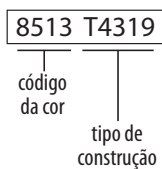
Cada referência deste catálogo está disponível nas 4 construções; **Sarlon 19dB**, **Sarlon 15dB**, **Modul'up 19dB** e **Modul'up compact**. Por baixo de cada referência apenas encontrará o número da cor. Para encomendar o produto correcto, deve sempre adicionar os seguintes códigos depois do número da cor.



Exemplo:

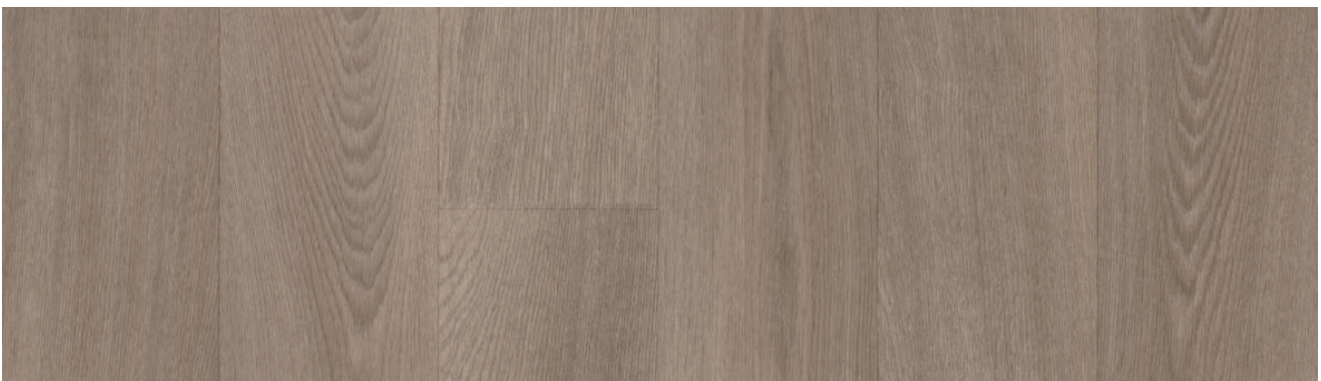
Se pretende a cor 'blond chill oak' na solução Sarlon 19dB, deve considerar o número da cor 8513 e adicionar a construção T4319.

Esta será a forma de como deverá proceder à encomenda:



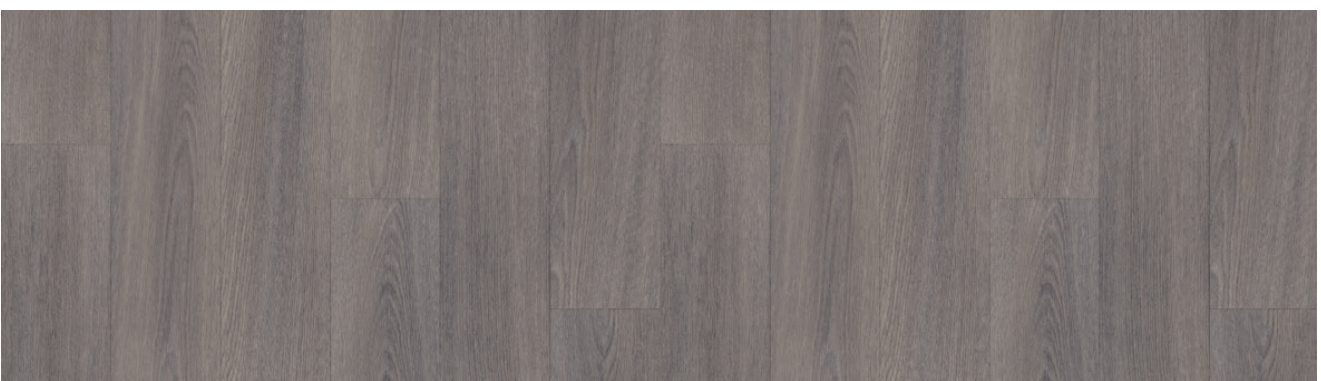


8412 | grey silver oak



8420 | clay oak xl

LRV 23%



8422 | carbon oak xl

LRV 16%



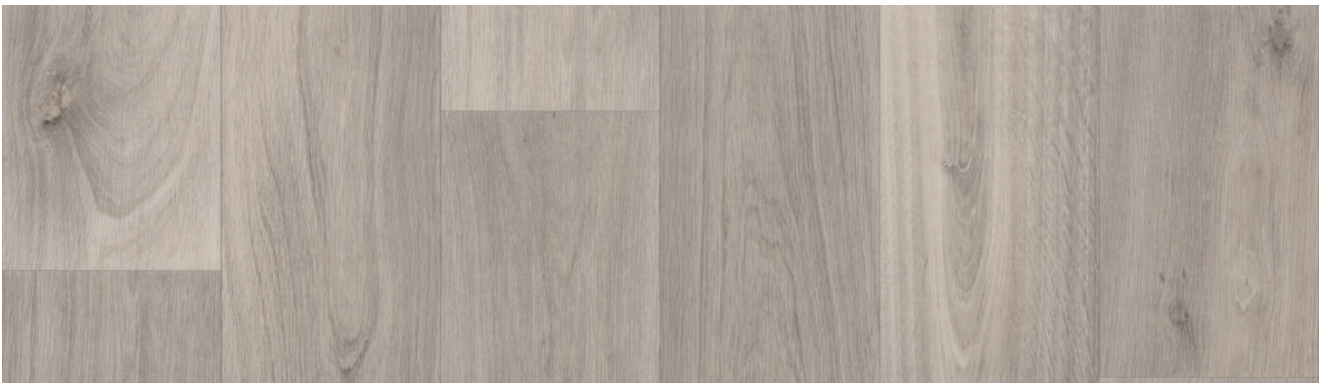
8483 | scandinavian oak

LRV 32%



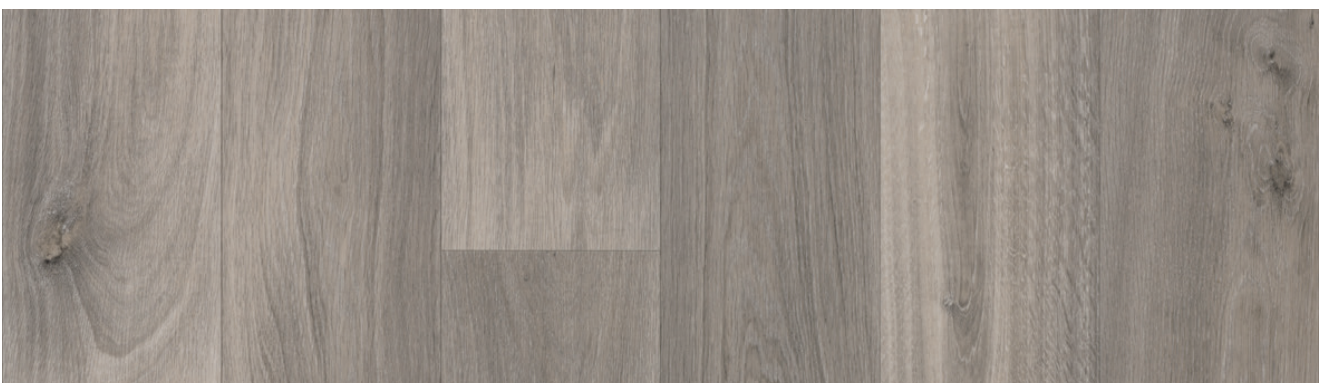
8413 | natural oak

LRV 32%



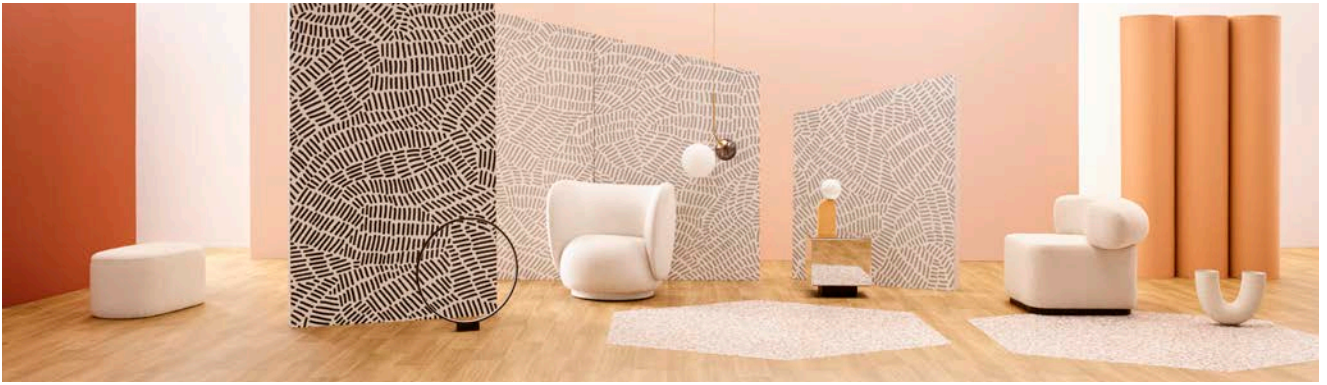
8421 | polar oak

LRV 39%



8412 | grey silver oak

LRV 26%



8513 | blond chill oak, **9406** | coral terrazzo



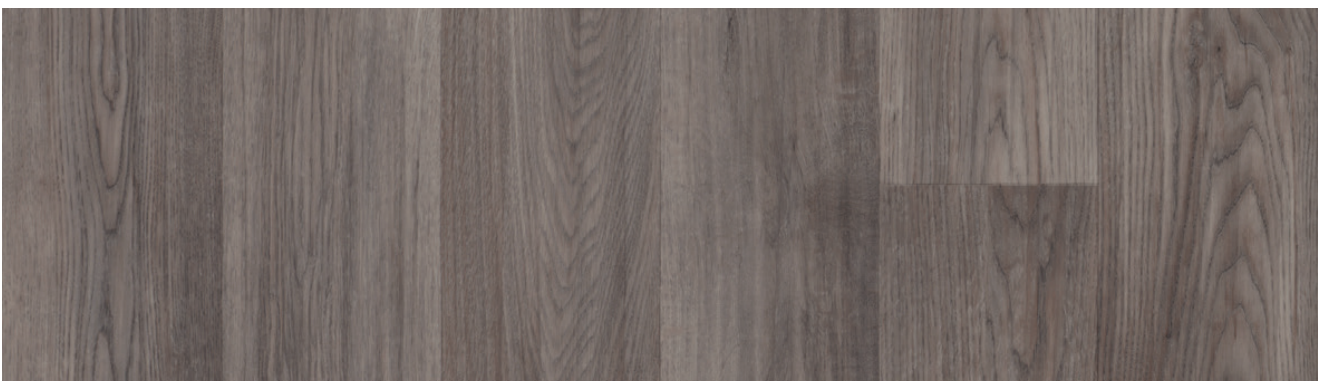
8513 | blond chill oak

LRV 29%



8514 | pure chill oak

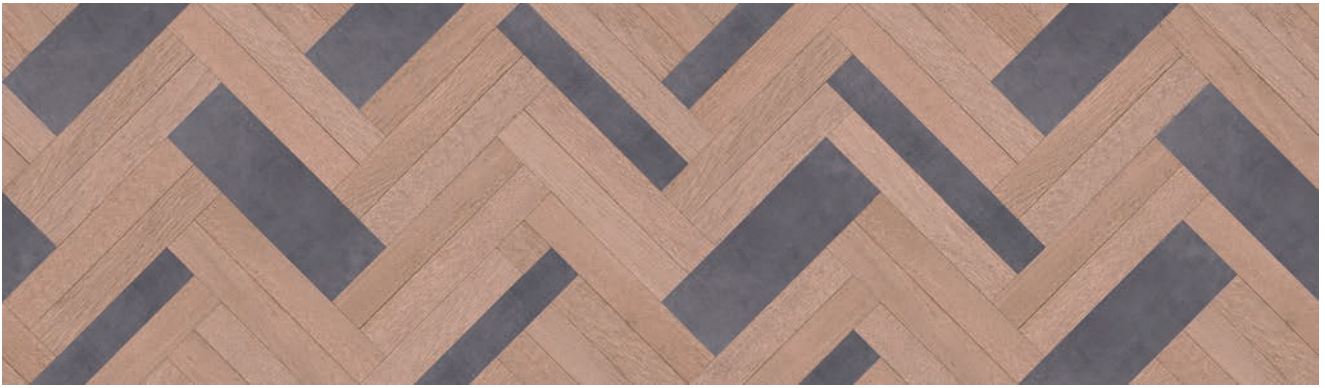
LRV 27%



8512 | smoked chill oak

LRV 25%

2 m



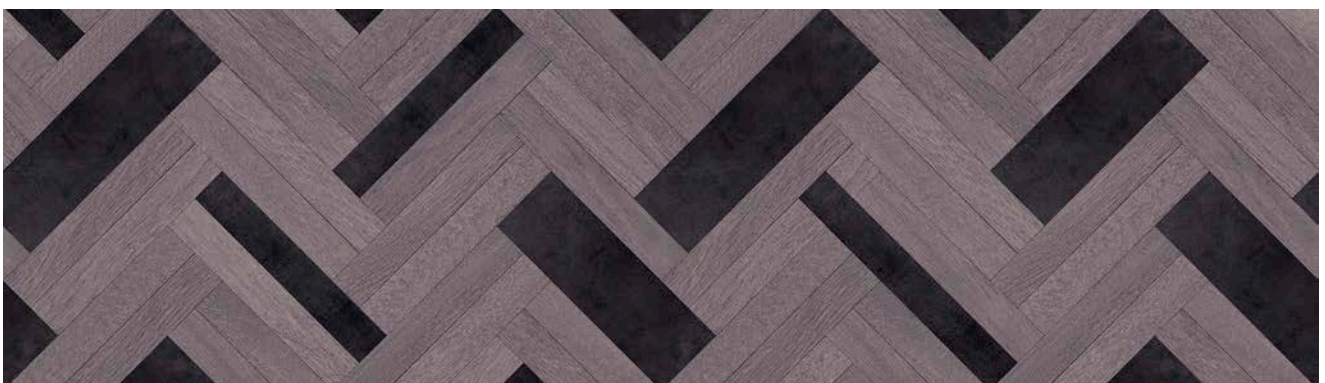
9201 | light hybrid wood concrete

LRV 22%



9209 | dark hybrid wood concrete

2 m



9209 | dark hybrid wood concrete

LRV 12%



311 | light grey zebrano

LRV 44%



313 | sand zebrano

LRV 38%



121 | grey linea

LRV 36%



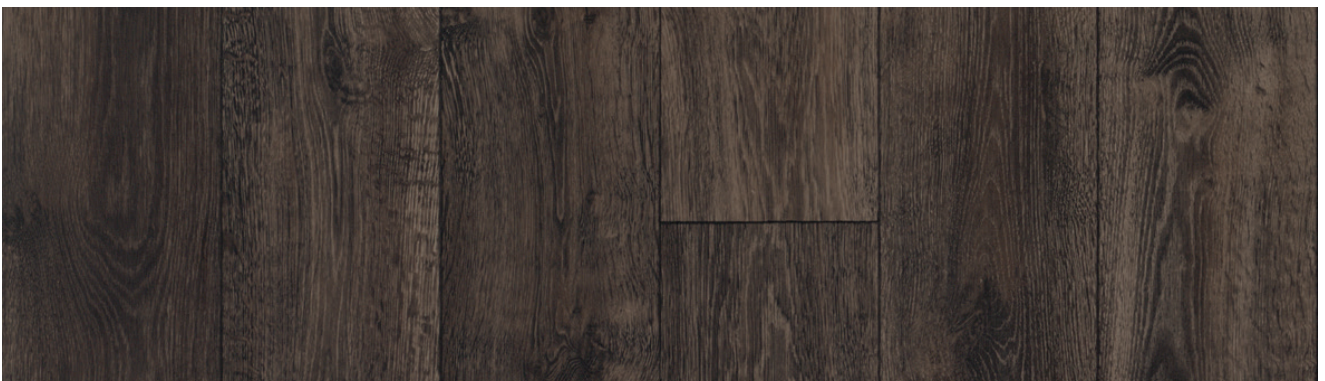
132 | charcoal linea

LRV 17%



8224 | brown rustic oak

LRV 11%

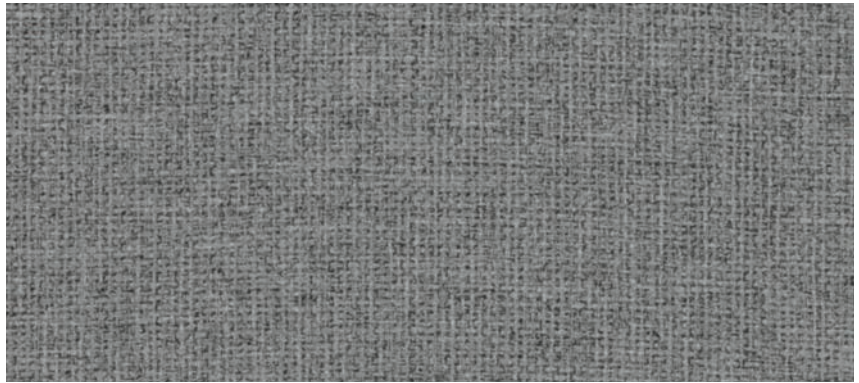


8229 | burned charcoal rustic oak

LRV 9%



302 | light grey nairobi LRV 30%



312 | anthracite nairobi LRV 22%



303 | sand nairobi LRV 26%



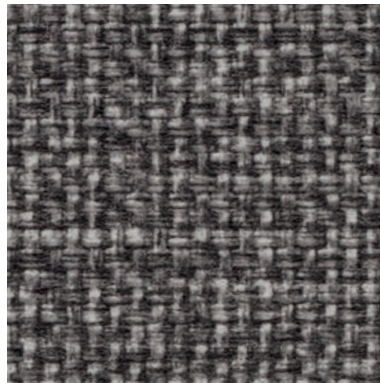
304 | taupe nairobi LRV 13%



307 | pastel blue nairobi LRV 40%



333 | warm sand canvas LRV 28%



339 | brown canvas LRV 13%



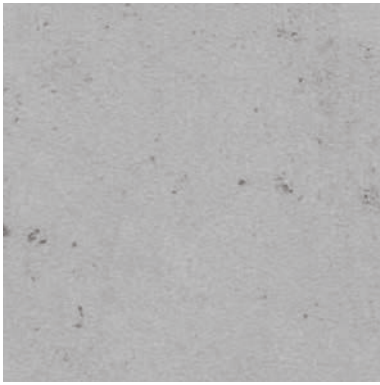
337 | indigo blue canvas LRV 15%



332 | light grey canvas LRV 20%



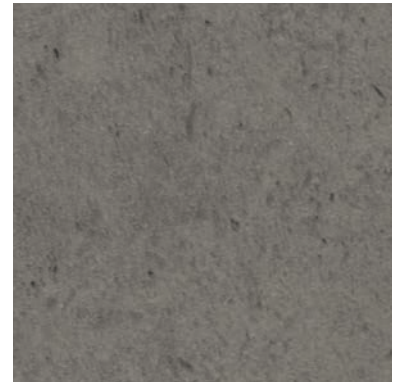
342 | natural grey canvas LRV 26%



651 | silver slabstone LRV 44%



659 | mercury slabstone LRV 28%



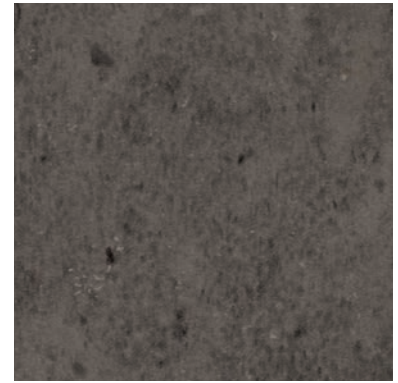
572 | medium grey cement LRV 25%



573 | clay cement LRV 41%



570 | chalk cement LRV 49%



579 | slate cement LRV 15%



713 | peanut concrete LRV 28%



651 | silver slabstone, **9402** | natural terrazzo



771 | silver concrete LRV 28%



761 | steel concrete LRV 16%



742 | pewter concrete LRV 12%



9501 | neutral grey dissolved stone, **4806** | soft peach stardust, **886** | red uni



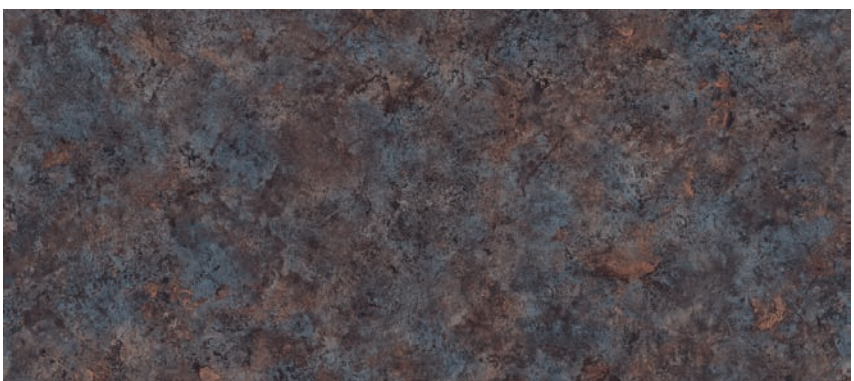
9501 | neutral grey dissolved stone LRV 45%



9502 | lead grey dissolved stone LRV 13%



904 | graphite stromboli LRV 12%



902 | bronzite stromboli LRV 11%



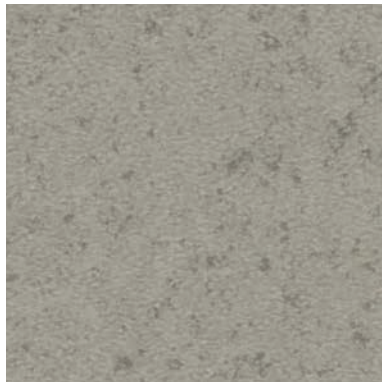
200 | ivory canyon

LRV 50%



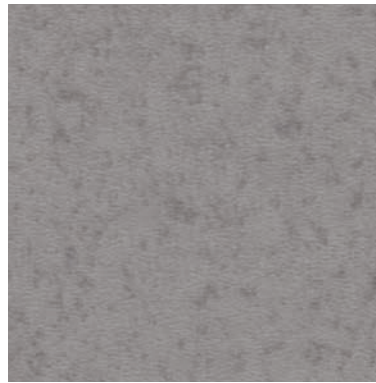
223 | sand canyon

LRV 53%



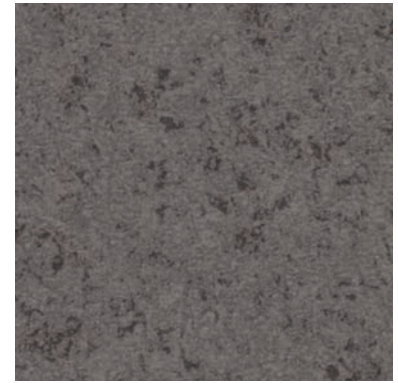
211 | light grey canyon

LRV 34%



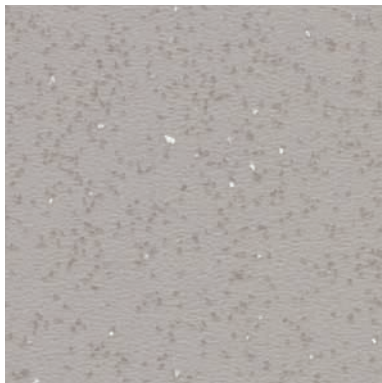
212 | grey canyon

LRV 27%



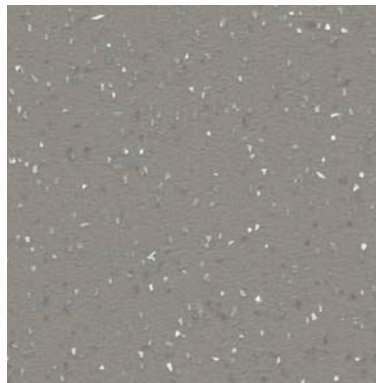
209 | medium grey canyon

LRV 19%



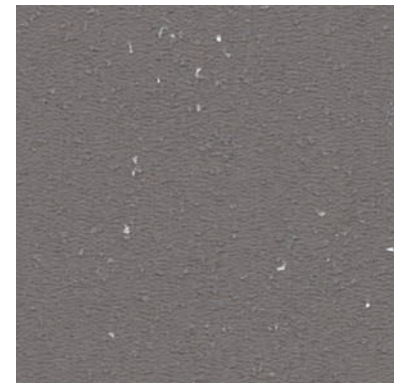
3801 | pearl cristal

LRV 41%



3812 | light grey cristal

LRV 29%



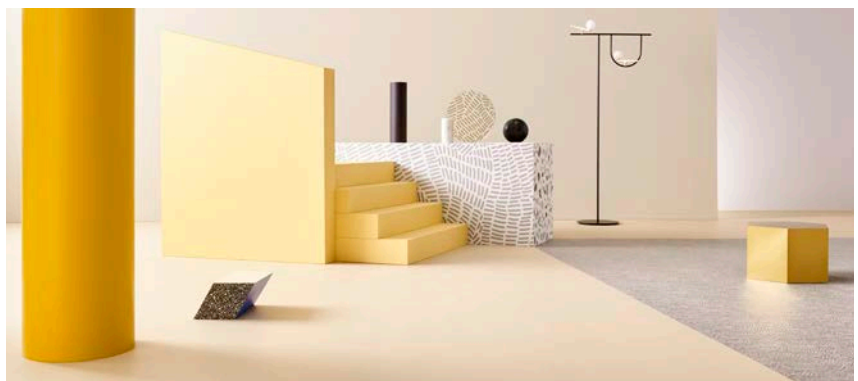
3819 | medium grey cristal

LRV 18%



3811 | grey beige cristal

LRV 47%



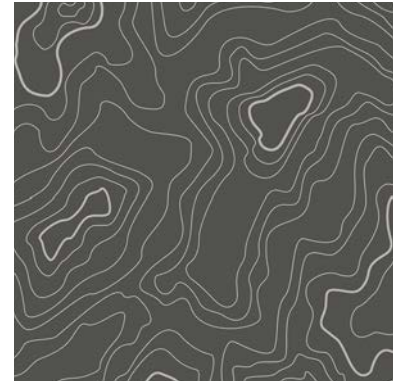
223 | sand canyon, **409** | black & white doodle



863 | beige grey uni LRV 39%



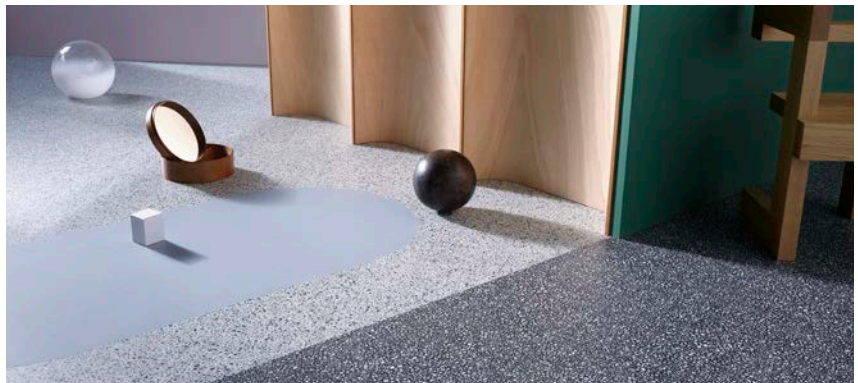
922 | steel grey topography LRV 29%



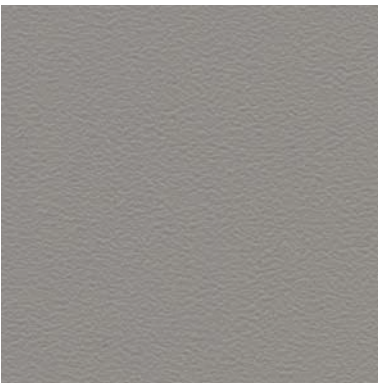
919 | grey topography LRV 13%



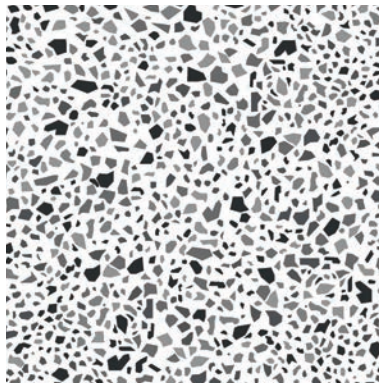
861 | light grey uni LRV 41%



9602 | grey graphito, **9609** | black graphito, **307** | pastel blue nairobi



862 | stone grey uni LRV 27%



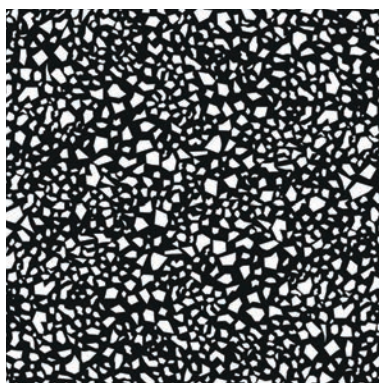
9602 | grey graphito LRV 44%



402 | grey & white doodle LRV 48%



869 | charcoal uni LRV 13%

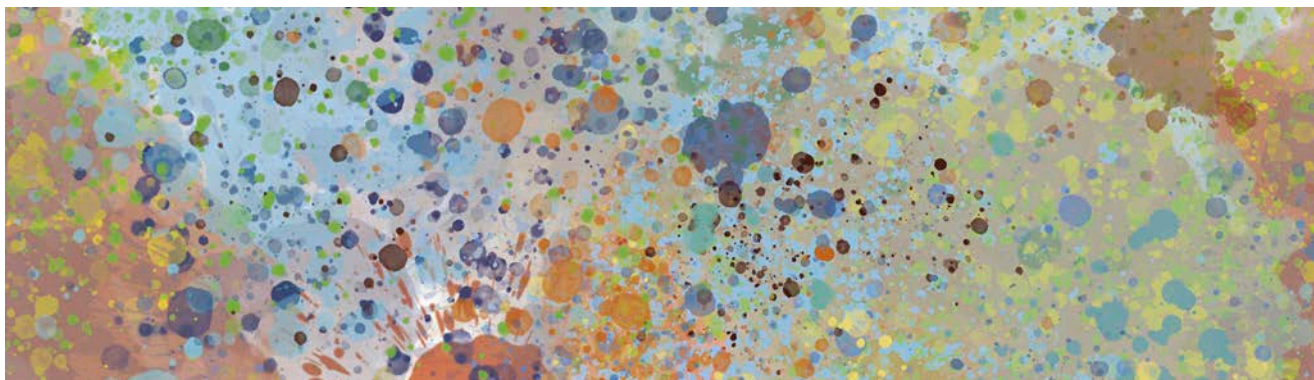


9609 | black graphito LRV 18%



409 | black & white doodle LRV 33%

2 m



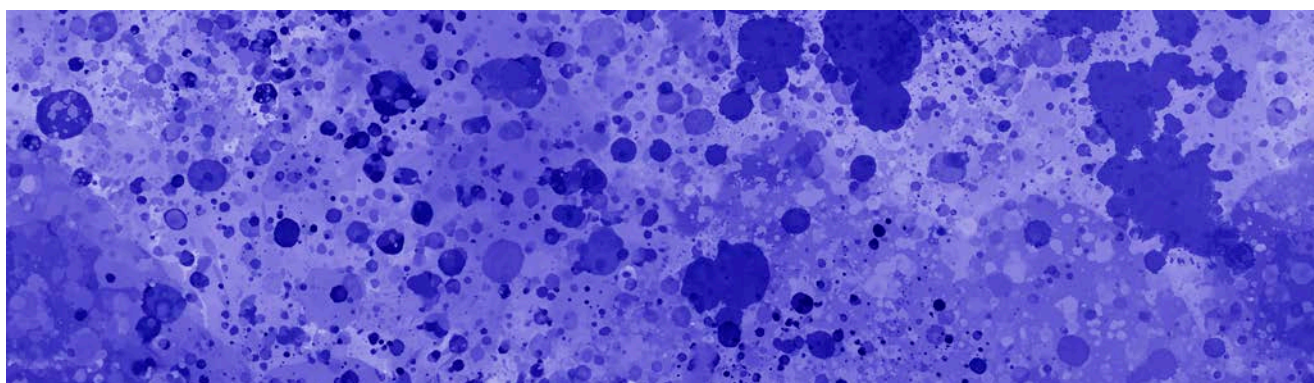
9100 | multi color splash

LRV 31%



9100 | multi color splash

2 m



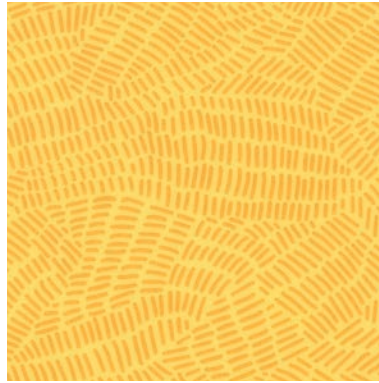
9107 | indigo color splash

LRV 14%



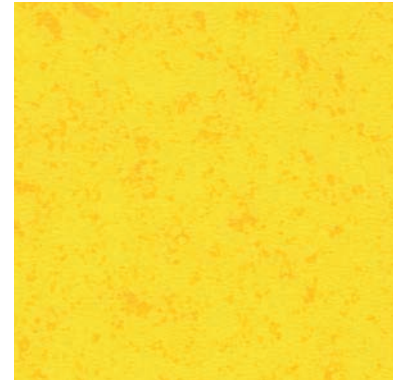
865 | yellow uni

LRV 61%



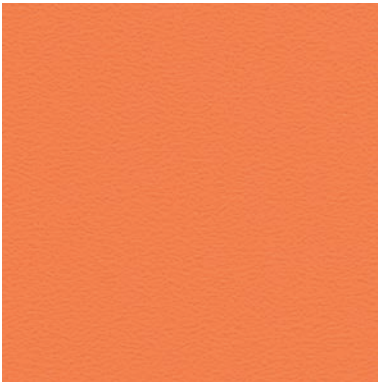
405 | yellow doodle

LRV 55%



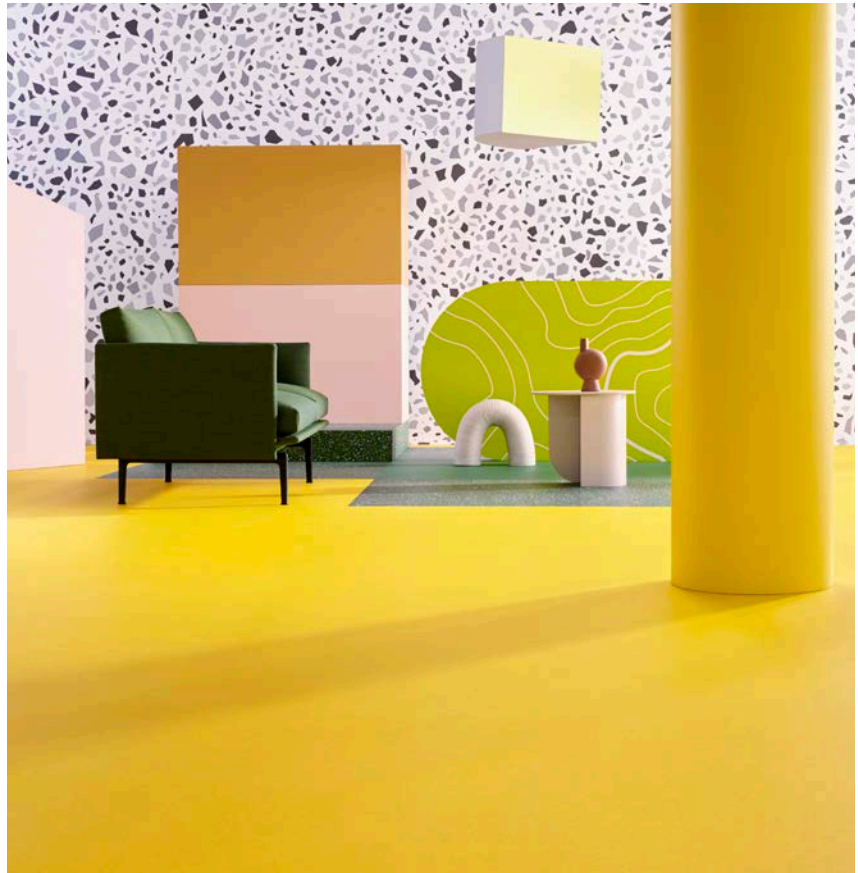
235 | lemon canyon

LRV 60%



866 | mandarine uni

LRV 33%



9608 | green graphito, 878 | dark green uni, 235 | lemon canyon



876 | orange uni

LRV 22%



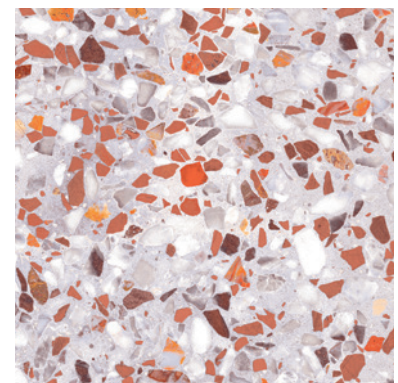
886 | red uni

LRV 13%



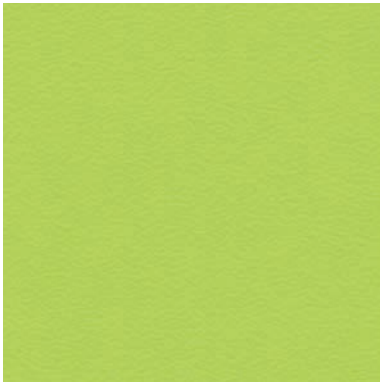
406 | red doodle

LRV 27%



9406 | coral terrazzo

LRV 46%



868 | lime uni LRV 48%



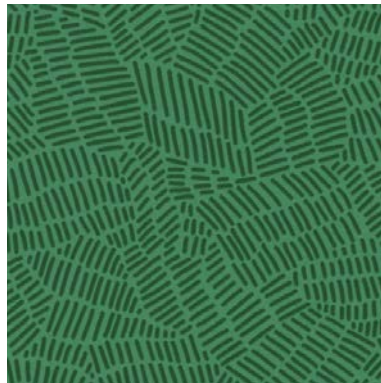
928 | lime topography LRV 54%



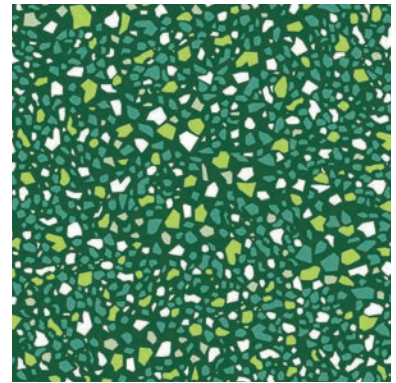
248 | lime green canyon LRV 49%



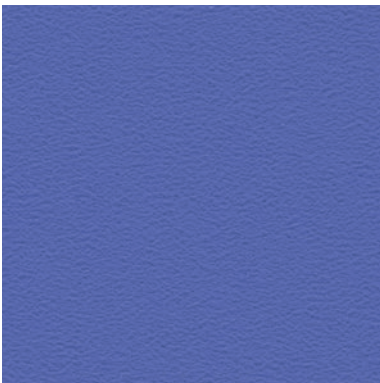
878 | dark green uni LRV 14%



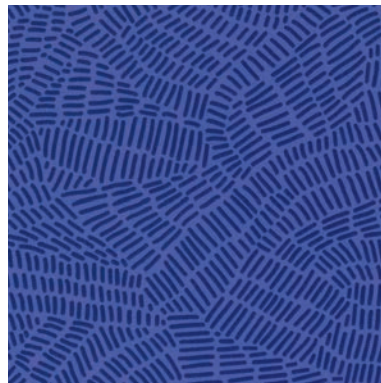
408 | dark green doodle LRV 13%



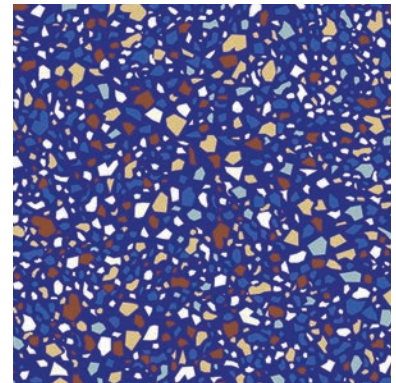
9608 | green graphito LRV 17%



867 | blue uni LRV 17%



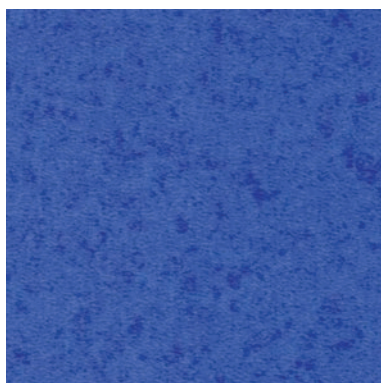
407 | blue doodle LRV 10%



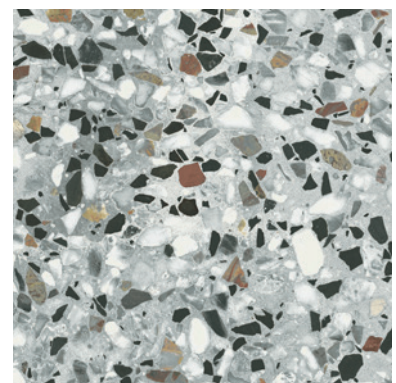
9607 | blue graphito LRV 15%



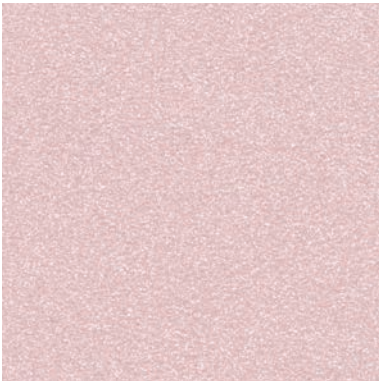
877 | dark blue uni LRV 6%



267 | cobalt blue canyon LRV 42%



9402 | natural terrazzo LRV 39%



4807 | lilac stardust LRV 64%



4803 | vanilla stardust LRV 69%



4806 | soft peach stardust LRV 57%



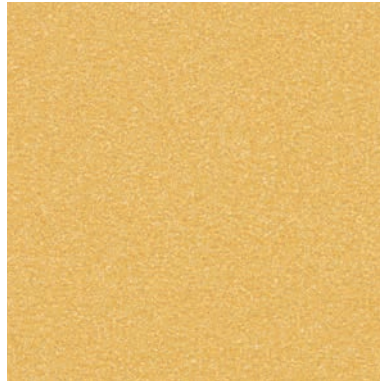
4808 | soft pistache stardust LRV 69%



4804 | copper stardust, **4806** | soft peach stardust



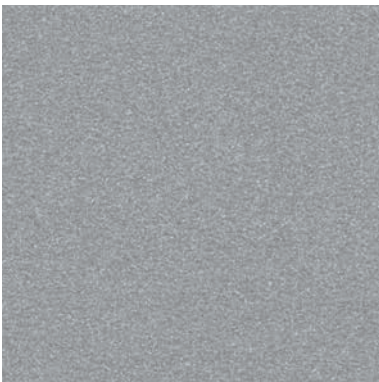
4818 | lime stardust LRV 70%



4805 | golden stardust LRV 52%



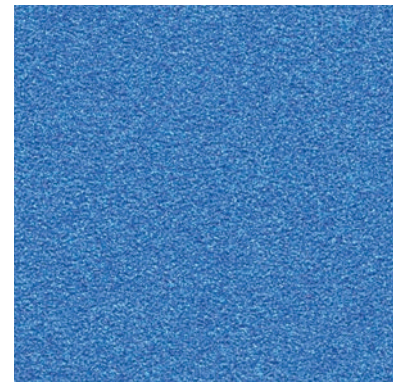
4817 | soft blue stardust LRV 61%



4801 | silver stardust LRV 35%

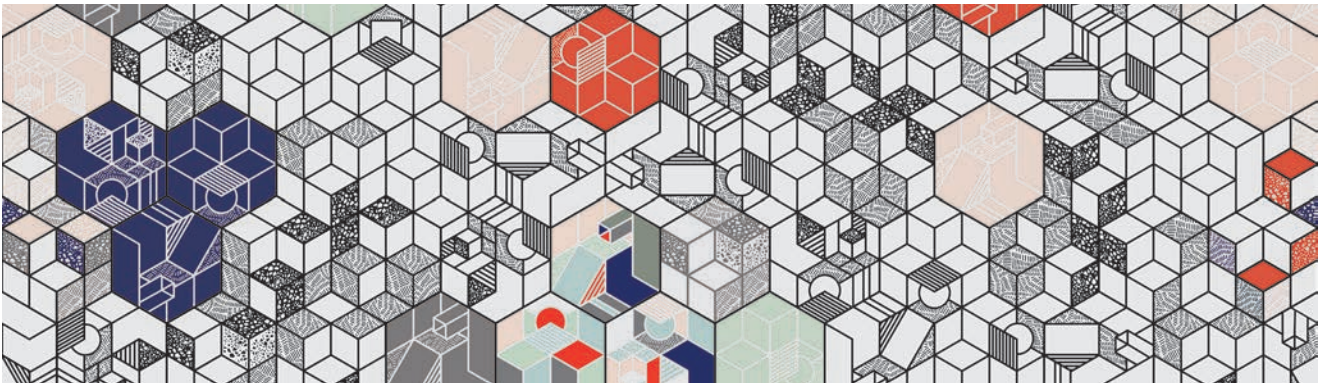


4804 | copper stardust LRV 20%



4827 | deep blue stardust LRV 24%

2 m



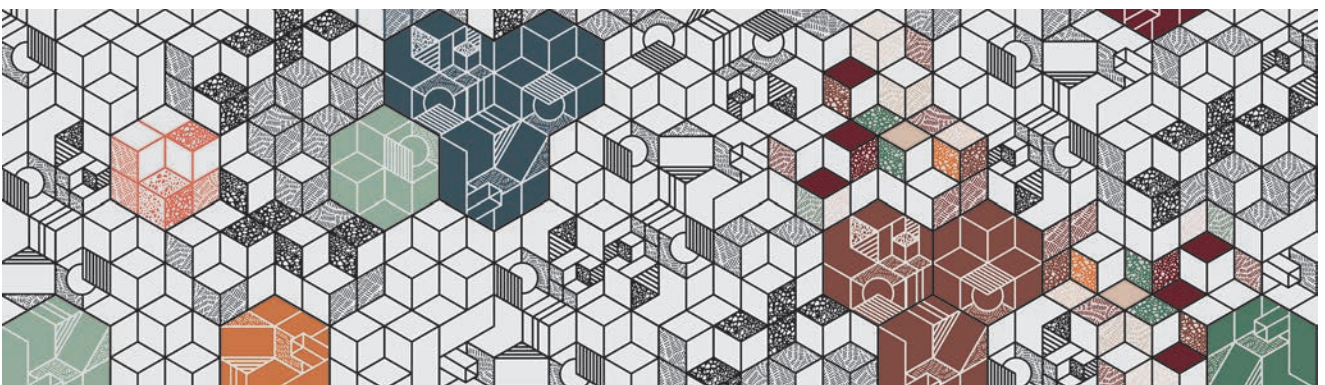
9307 | pastel kubik

LRV 31%



9307 | pastel kubik, 877 | dark blue uni

2 m



9309 | dark kubik

LRV 40%



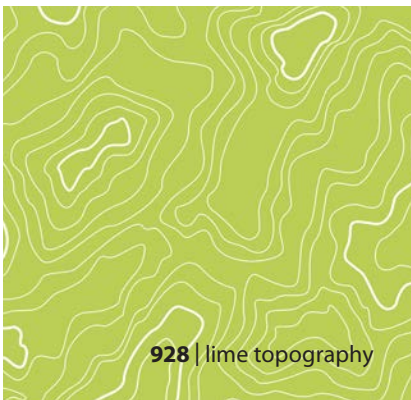




9100 | multi color splash



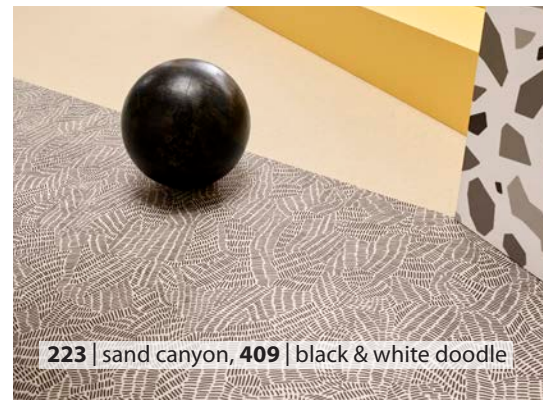
402 | grey & white doodle



928 | lime topography



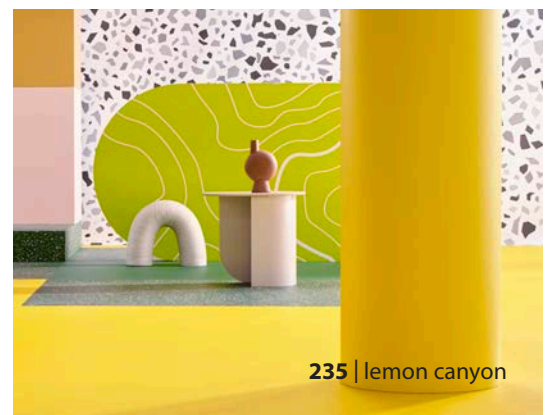
9107 | indigo color splash



223 | sand canyon, 409 | black & white doodle



4803 | vanilla stardust, 307 | pastel blue nairobi



235 | lemon canyon



9307 | pastel kubik



sarlon® | modul'up®

Diversidade de mãos dadas

As coleções Sarlon Trafic e Modul'up estão de mãos dadas.

Ao juntá-las sob o mesmo conceito estamos a melhorar e a expandir a qualidade deste produto.

O conceituado acústico Sarlon e o conceito inovador Modul'up estão agora no mesmo catálogo.

Este catálogo oferece grande variedade indo sempre ao encontro das maiores exigências colocadas pelos projetos atuais.

Este catálogo, com mais de 90 propostas de design e cor, é bastante abrangente e diversificado, sendo adequado para qualquer tipo de ambiente, sem perder de vista o conceito global das várias dinâmicas dentro de um edifício.



9201 | light hybrid wood concrete



761 | steel concrete, 4804 | copper stardust







4817 | soft blue stardust, 4827 | deep blue stardust



303 | sand nairobi, 8514 | pure chill oak



Neste catálogo encontrará a gama completa de todos os itens disponíveis em 4 construções sempre com excelente desempenho e com todas as características que lhes são atribuídas.



XTREM PUR

ACABAMENTO DE SUPERFÍCIE DE ELEVADO DESEMPENHO

- A melhor resistência aos químicos, bloqueando até as manchas mais difíceis para uma manutenção simples
- Grande resistência e proteção contra riscos, arranhões e outras agressões da superfície
- Superfície de limpeza fácil, permitindo uma higiene perfeita sem oportunidade para o crescimento de bactérias
- Aspeto mate natural que realça o design. Resistência ao escorregamento R10



sarlon® 19dB

A MELHOR OPÇÃO ACÚSTICA PARA TRÁFEGO INTENSO

- Redução do impacto sonoro de 19dB
- A melhor classificação na resistência às marcas para um produto acústico 19dB
- Excelente desempenho em todos os níveis



sarlon® 15dB

A MELHOR SOLUÇÃO PARA EXIGÊNCIAS ACÚSTICAS, DE TRÁFEGO INTENSO E COM CARGAS PESADAS

- Reduzido valor de indentação, adequado para cargas pesadas
- Performance acústica de 15dB para mais conforto e melhor desempenho
- Uma proposta única no mercado



modul'up® 19dB

A MELHOR SOLUÇÃO ACÚSTICA AUTOPORTANTE EM ROLO

- Instalação rápida (sem perturbar zonas ocupadas), utilização imediata
- Execução rápida da obra que se traduz numa efetiva redução de custos
- Todas as vantagens de um produto acústico



modul'up® compact

INOVADORA SOLUÇÃO COMPACTA AUTOPORTANTE EM ROLO

- Instalação rápida e reduzidos tempos de espera. Espaço pronto a usar de imediato
- Solução compacta e robusta para utilização intensa
- Possibilidade de usar mantendo o revestimento existente

A gama Modul'up faz parte do conceito de economia circular e não necessita de colagem para a sua aplicação.

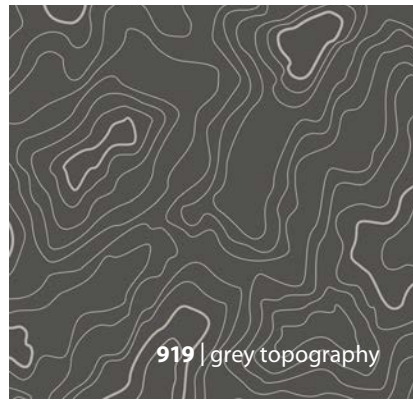
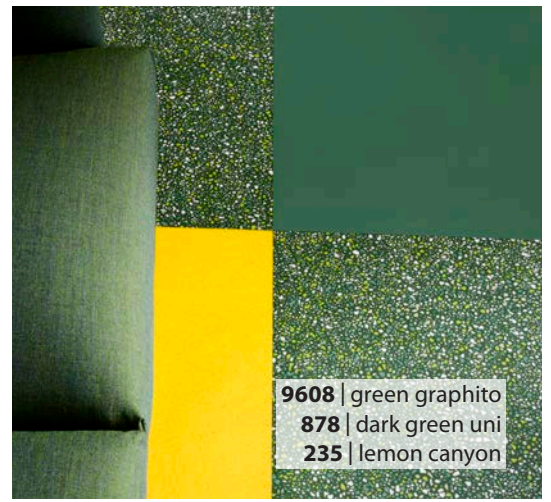
Todas as 4 construções de produto presentes neste catálogo são livres de ftalatos, produzidas com energia verde e com reduzidas emissões e todas cumprem os principais requisitos ambientais e respetivos padrões de qualidade.





A Lokaal 00.16 - 00.34
GRAND CAFÉ →


























RESTAURANT



Especificações Técnicas

Sarlon 15dB, Sarlon 19dB e Modul'up 19dB cumprem os requisitos das normas EN 651 e ISO 11638

Modul'up Compact cumpre os requisitos da norma EN 10582.

		Sarlon 15 dB	Sarlon 19 dB	Modul'up 19 dB	Modul'up Compact	
	Espessura total	EN ISO 24346	2,6 mm	3,4 mm	3,45 mm	2,0 mm
	Espessura da camada de desgaste	EN ISO 24340	0,70 mm	0,70 mm	0,70 mm	0,70 mm
	Tráfego comercial	EN ISO 10874	34	34	34	34
	Tráfego industrial	EN ISO 10874	42	42	42	43
	Embalagem		Rolo	Rolo	Rolo	Rolo
	Comprimento do rolo	EN ISO 24341	25 ml	25 ml	25 ml	25 ml
	Largura do rolo	EN ISO 24341	2 m	2 m	2 m	2 m
	Peso total	EN ISO 23997	2.700 g/m ²	2.900 g/m ²	2.830 g/m ²	2.600 g/m ²
	Redução do impacto sonoro	EN ISO 717-2	ΔLw = 15 dB	ΔLw = 19 dB	ΔLw = 19 dB	n.a.
	Impacto sonoro "in room"	NF S 31-074	Ln,e,w < 65 dB, Class A	Ln,e,w < 65 dB, Class A	Ln,e,w < 65 dB, Class A	Ln,e,w < 75 dB, Class B
	Absorção do som	EN ISO 354 EN ISO 11654	α _w = ± 0,05	α _w = ± 0,05	α _w = ± 0,05	α _w = ± 0,05
	Resistência às marcas <i>Exigência da norma</i>	EN ISO 24343-1	0,05 mm ≤ 0,20 mm	0,08 mm ≤ 0,20 mm	0,08 mm ≤ 0,20 mm	0,02 mm ≤ 0,10 mm
	Resistência ao escorregamento	DIN 51130	R10	R10	R10	R10
	Resistência à abrasão	EN 660-2	T	T	T	T
	Resistência a cadeiras de rodas	ISO 4918	Sim	Sim	Sim	Sim
	Resistência às marcas de mobiliário	EN ISO 16581	conforme	conforme	conforme	conforme
	Estabilidade dimensional	EN ISO 23999	≤ 0,10 %	≤ 0,10 %	≤ 0,10 %	≤ 0,10 %
	Solidez das cores à luz <i>Exigência</i>	EN ISO 105-B02	7 ≥ 6	7 ≥ 6	7 ≥ 6	7 ≥ 6
	Resistência a manchas	EN ISO 26987	Excelente	Excelente	Excelente	Excelente
	Atividade antibacteriana ⁽³⁾	ISO 22196 ou ISO 846	inibição crescimento >99%	inibição crescimento >99%	inibição crescimento >99%	inibição crescimento >99%
	Tratamento de superfície		XtremPUR tm	XtremPUR tm	XtremPUR tm	XtremPUR tm
	Emissões no ar interior: TCOV* após 28 dias	EN 16516	≤ 0,01 mg/m ³	≤ 0,01 mg/m ³	≤ 0,01 mg/m ³	≤ 0,01 mg/m ³
	REACH (Regulamento Europeu)	1907/2006/CE	conforme ⁽¹⁾	conforme ⁽¹⁾	conforme ⁽¹⁾	conforme ⁽¹⁾
	Cumprir a EN 14041		0200860-DOP-010	0200859-DOP-010	0200859-DOP-010	0200862-DOP-010
	Reação ao fogo	EN 13501-1	B _{fl} - s1, L, NCS	B _{fl} - s1, L, NCS	B _{fl} - s1, L, NCS	B _{fl} - s1, L, NCS
	Resistência ao escorregamento	EN 13893	μ ≥ 0,30	μ ≥ 0,30	μ ≥ 0,30	μ ≥ 0,30
	Acumulação de cargas electrostáticas	EN 1815	≤ 2 kV	≤ 2 kV	≤ 2 kV	≤ 2 kV
	Resistência térmica ⁽²⁾	EN 12524 (EN ISO 10456)	0,25 W/(m.K)	0,25 W/(m.K)	0,25 W/(m.K)	0,25 W/(m.K)

⁽¹⁾ Os artigos (produtos) não devem conter substâncias da lista de candidatos publicadas pela ECHA (substâncias que suscitam elevada preocupação - SVHC) a serem declaradas de acordo com o REACH.

⁽²⁾ Adequado para pavimento aquecido.

⁽³⁾ Recomenda-se a aplicação do protocolo de limpeza Forbo.

* TVOC: total de compostos orgânicos voláteis.

Todas as unidades comerciais da Forbo Flooring Systems existentes em todo o mundo gozam de Certificado de Qualidade do Sistema de Gestão de acordo com a ISO 9001. Todas as fábricas da Forbo Flooring Systems gozam de Certificado de Qualidade do Sistema de Gestão Ambiental de acordo com a ISO 14001.

A Avaliação do Ciclo de Vida (ACV) dos produtos Forbo Flooring Systems está documentada na Declaração Ambiental de Produto (EPD) e pode ser consultada no website.



Portugal

Forbo-Revestimentos, SA
Zona Industrial da Maia I, Sector VII
Tv. Eng. Nobre da Costa, 87
Apartado 6091
4476-908 Maia
T: +351 229 996 900
F: +351 229 996 909
info.revestimentos@forbo.com
www.forbo-flooring.com.pt

