

## Installing Allura Flex LVT Flooring

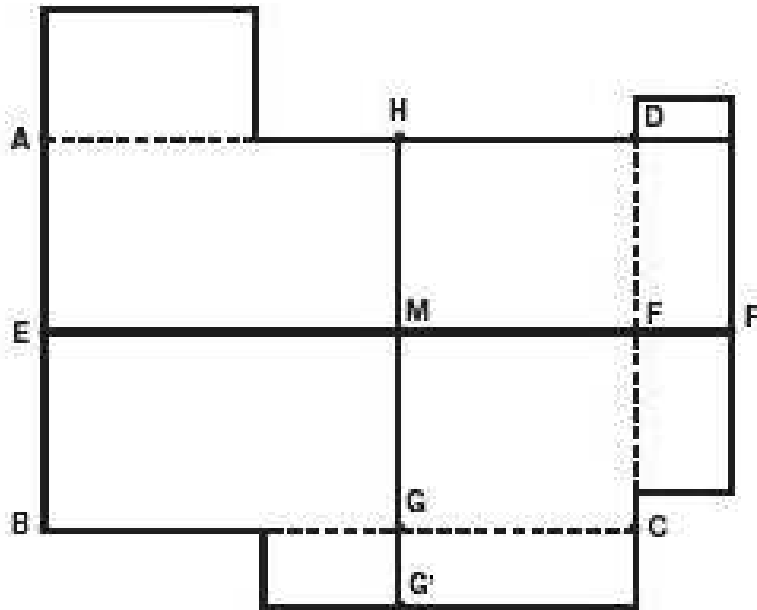
### Layout

Allura Flex LVT flooring products are fit using conventional tile fitting techniques.

It is customary to start from the center of the room. In corridors and small spaces, it may be simpler to work lengthwise from one end, using the center line as a guide.

The center line is drawn as follows (Figure 1): A chalk line is snapped from center of wall A/B (Point E) to the center of wall C/D (Point F). The center of line E/F is found (Point M). Draw a perpendicular line through Point M using the 3:4:5 method to establish G/H.

Starting at Point M, measure out lengthwise and widthwise to the walls to make sure you will have at least a half of a tile at the border. Adjust lines E/F and G/H if necessary.



## Installing Allura Flex LVT Flooring

- Always refer to and follow the recommendations in the **General Installation Guidelines section** of the Forbo Installation Guide prior to installing Allura Flex LVT flooring.
- Always refer to and follow the recommendations in the **Substrate Evaluation and Preparation section** of the Forbo Installation Guide prior to installing Allura Flex LVT flooring.
- Beginning the installation is an implied acceptance of site conditions and liability for any failure directly related to inadequate site conditions becomes the responsibility of the installer and/or flooring contractor.
- Allura Flex LVT flooring may be installed on approved substrates on all grade levels.
- Store Allura Flex LVT cartons unopened.
- For releasable installations, use Forbo FRT 950 adhesive. Use a 3/8" nap roller to apply the Forbo FRT 950 adhesive. Replace roller when proper coverage is no longer attainable.
- **For permanent installations only**, use Forbo T 940, Forbo Sustain 885m or Forbo 660 adhesive. Use a 1/16" x 1/16" x 1/16" square notch trowel to apply the adhesive. Replace the trowel blade when proper coverage is no longer attainable.
- Use material from the same batch/dye lot.
- Do not remove more tile from the carton than can be installed in approximately 1 hour.
- Install cartons in consecutive order.
- Allura Flex LVT flooring must be installed with all arrows on the back running in the same direction, with material from the same batch.
- Take pride in your work and be Professional at all times.
- **For additional information, contact Forbo's Product Support & Education Services at 1-800-842-7839 or [www.forboflooringNA.com](http://www.forboflooringNA.com).**

### Releasable Installation

- For releasable installations, use Forbo FRT 950 adhesive.
- After establishing the starting lines, spread the adhesive using a 3/8" nap roller ensuring enough adhesive is being applied (refer to the spread rate on the adhesive bucket lid sticker).
- Be sure to spread adhesive all the way to the starting line without leaving any voids.
- Allow the adhesive to turn clear and dry to the touch before installing the flooring. After turning clear, the flooring **MUST** be placed into the adhesive within four (4) hours.
- Begin laying tiles at the starting point, ensuring that the tile is placed exactly along the layout lines. If the first few tiles are not installed accurately, the entire installation will be affected.
- Immediately roll the flooring in all directions using a 100 lb. roller to ensure proper adhesive transfer. Additional rolling is required during adhesive setup to ensure that the material is flat and fully adhered.
- The use of a three-section wall roller or steel seam roller is required at walls, under toe kicks or anywhere the full weight of a 100 lb. roller cannot access or be applied.
- Remove fresh adhesive residue immediately with a clean white cloth. Dried adhesive can be removed with a clean white cloth and Forbo Adhesive Remover. If this is not available, a solution of properly diluted neutral pH cleaner may be used. The area should then be rinsed with clean, cool water to remove all residues from the floor.

### Permanent Installation

- For permanent installations, use Forbo T 940, Forbo Sustain 885m or Forbo 660 adhesive.
- After establishing the starting lines, spread the adhesive using a 1/16" x 1/16" x 1/16" square notch trowel.
- Be sure to spread adhesive all the way to the starting line without leaving any voids.
- Begin laying tiles at the starting point, ensuring that the tile is placed exactly along the layout lines. If the first few tiles are not installed accurately, the entire installation will be affected.
- The tiles must be installed into wet adhesive. Do not spread adhesive in an area larger than can be installed while ensuring 100% wet transfer to the backing of the material.
- The open time and working time of adhesives will vary depending on site conditions such as ambient temperature and humidity, the porosity of the substrate and air circulation. It is the installer's responsibility to make adjustments to specific conditions as may be necessary to ensure 100% wet adhesive transfer to the material backing. A general indication of proper open time is when a light touch produces transfer of adhesive to the finger, but a firm touch will flatten and "smear" the adhesive. For additional information, refer to the **Adhesives section** of the Forbo Installation Guide.

## Installing Allura Flex LVT Flooring

---

- A short open time will be necessary. The adhesive should be allowed to develop body before placing the flooring material into the adhesive, but **DO NOT ALLOW THE ADHESIVE TO DRY**.
- Check for adhesive transfer frequently. There must be **100% wet** transfer of adhesive to the material backing in order to achieve a secure bond. 100% wet transfer is a continuous film of adhesive, when wet, on both the backing of the material and the substrate with no trace of trowel marks or ridges. The flooring material **must remain in contact with the adhesive while the adhesive is drying and curing**.
- Immediately roll the flooring in all directions using a 100 lb. roller to ensure proper adhesive transfer. Additional rolling is required during adhesive setup to ensure that the material is flat and fully adhered.
- The use of a three-section wall roller or steel seam roller is required at walls, under toe kicks or anywhere the full weight of a 100 lb. roller cannot access or be applied.
- Proper tile placement and rolling will result in a complete “explosion” of the trowel ridges, creating a continuous flat film of adhesive. Complete transfer of the tile backing will appear as only the impression of the tile backing in the surface of the adhesive. No standing trowel ridges should be visible.
- The time it takes to mark and cut the border tiles must be considered when planning the installation. Without adequate planning, the working time of the adhesive around the perimeter may be exceeded before the tiles are installed. This will result in an inadequate bond of the perimeter tiles. Always plan the sequence of spreading adhesive so that the perimeter tiles can be cut and placed into the adhesive before the adhesive working time has been exceeded.
- Remove fresh adhesive residue immediately with a clean white cloth. Dried adhesive can be removed with a clean white cloth and Forbo Adhesive Remover. If this is not available, a solution of properly diluted neutral pH cleaner may be used. The area should then be rinsed with clean, cool water to remove all residues from the floor.  
**NOTE:** If using Forbo 660 adhesive, refer to the **Adhesives section** of the Forbo Installation Guide for additional information.

Forbo’s Installation Guide contains additional information and is available for download at [www.forboflooringNA.com](http://www.forboflooringNA.com). For a hard copy, or for additional information, contact Forbo’s Product Support & Education Services at 1-800-842-7839.