

# UK Installation Guidance Note: Colorex Plus range skirting

Colorex Plus EC/SD, Colorex Plus Basic and Colorex Plus R10 can be finished with preformed corners and skirting profiles.

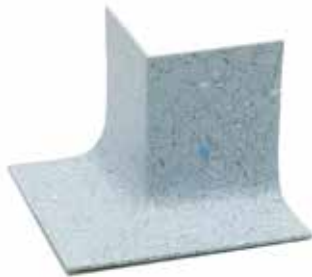
This solution is specifically designed for hygienic critical applications or where there is a need to comply with ground water protection regulations.

For this skirting solution, a special thickness cove former is available to use with the skirting strips and preformed inner/outer corner pieces. The cove former is fitted loose between the wall and Colorex tiles, with the skirting strip adhered directly to it and welded.

## Accessory range:



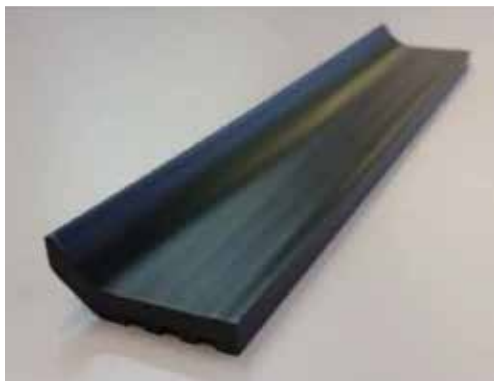
**Colorex cove skirting strips**



**External preformed corners**



**Internal preformed corners**



**Cove former profile**

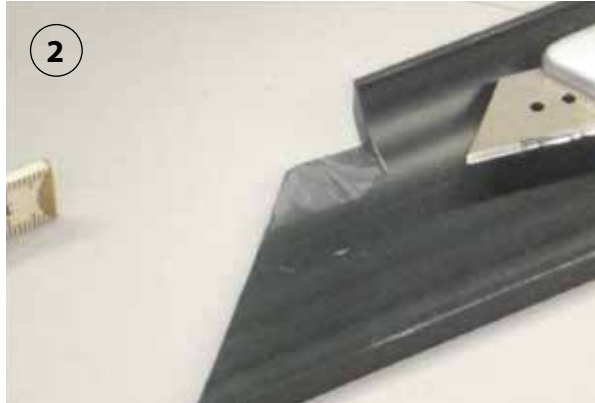


**Welding rod**

**How to proceed with the installation:**



Colorex Plus tiles should be fitted with all fixing lugs removed to the wall face side and then fit the cove former profile along the wall.



Cut the external corner mitre section top to make room for the reinforcement at the back of the Colorex external preformed corner.



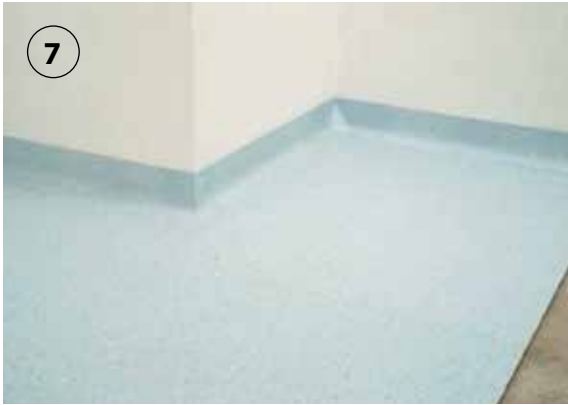
Cut profile-end fitted to both sides to make room for the reinforcement at the back of the Colorex external preformed corner.



Fit the Colorex Plus tiles tight between the cove former and the installed Colorex Plus floor.



Install the preformed internal and external corner pieces and the cove skirting strips with contact adhesive.



All components can now be heat welded for perfect hygiene and functionality.



**Final result:** neat, hygienic and watertight floor-to-wall transitions.

**If in any doubt contact us:**

Forbo Flooring UK Ltd

Tel: **0800 121 4780**

Samples: **0800 731 2369**

**Info.flooring.uk@forbo.com**

**www.forbo-flooring.co.uk**