

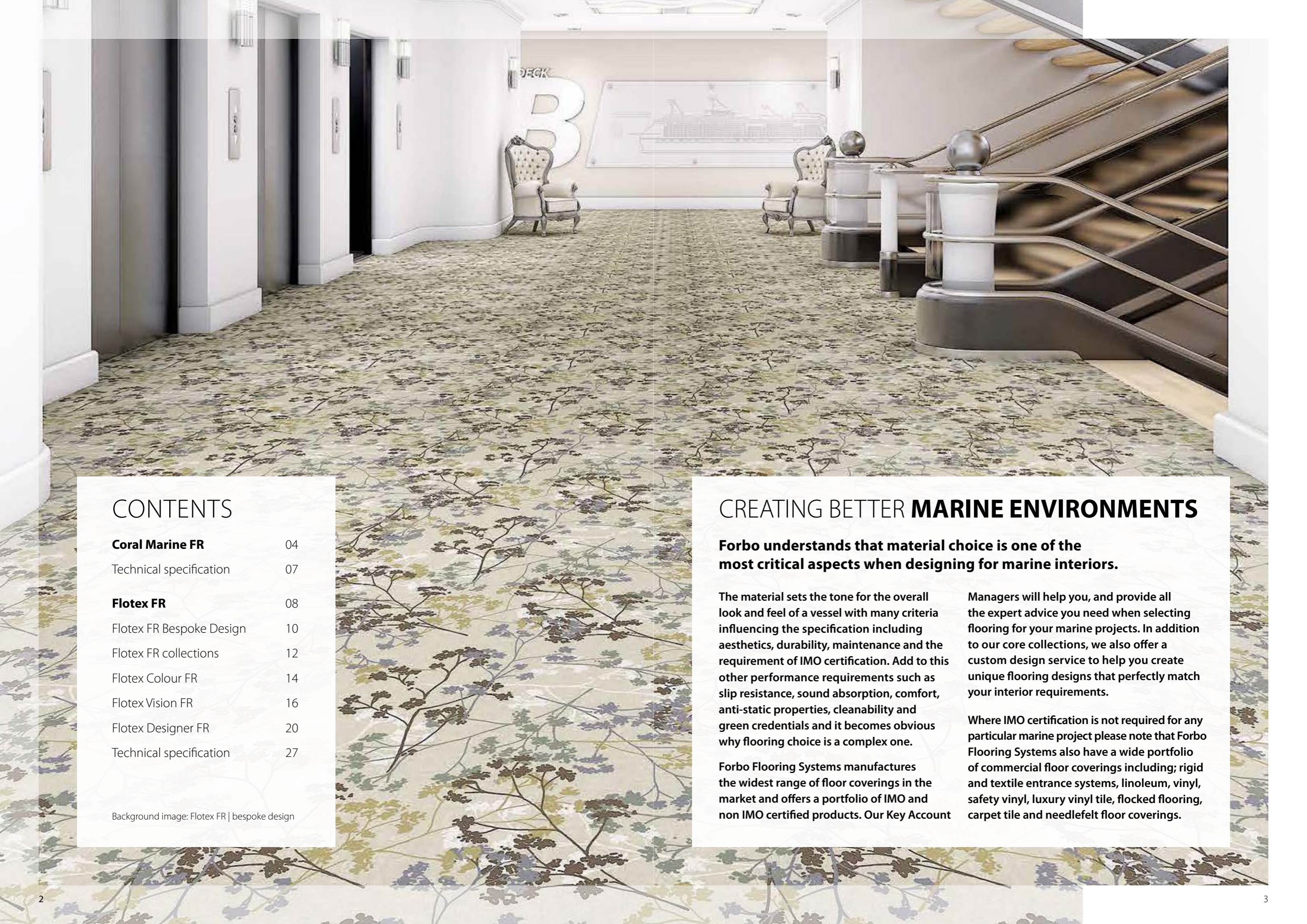


MARINE FLOOR COVERINGS

creating better environments

fridbo

FLOORING SYSTEMS



CONTENTS

Coral Marine FR	04
Technical specification	07
Flotex FR	08
Flotex FR Bespoke Design	10
Flotex FR collections	12
Flotex Colour FR	14
Flotex Vision FR	16
Flotex Designer FR	20
Technical specification	27

Background image: Flotex FR | bespoke design

CREATING BETTER **MARINE ENVIRONMENTS**

Forbo understands that material choice is one of the most critical aspects when designing for marine interiors.

The material sets the tone for the overall look and feel of a vessel with many criteria influencing the specification including aesthetics, durability, maintenance and the requirement of IMO certification. Add to this other performance requirements such as slip resistance, sound absorption, comfort, anti-static properties, cleanability and green credentials and it becomes obvious why flooring choice is a complex one.

Forbo Flooring Systems manufactures the widest range of floor coverings in the market and offers a portfolio of IMO and non IMO certified products. Our Key Account

Managers will help you, and provide all the expert advice you need when selecting flooring for your marine projects. In addition to our core collections, we also offer a custom design service to help you create unique flooring designs that perfectly match your interior requirements.

Where IMO certification is not required for any particular marine project please note that Forbo Flooring Systems also have a wide portfolio of commercial floor coverings including; rigid and textile entrance systems, linoleum, vinyl, safety vinyl, luxury vinyl tile, flocked flooring, carpet tile and needlefelt floor coverings.



coral[®] marine FR

TEXTILE ENTRANCE AND CORRIDOR FLOOR COVERINGS

Coral Marine FR | Sydney blue

coral[®] marine FR

Coral is the market leader in entrance systems providing an exceptionally versatile and proven range of 'clean-off' entrance system products and customisable carpets.

Wet and dry soiling brought on board on the soles of shoes and the tyres of wheeled traffic, make interiors look dirty and unattractive, causes structural damage to interior floor coverings and finishes and creates unnecessary health and safety hazards. If effective measures are not taken to avoid this problem, the repair and maintenance costs of a typical floor covering over its lifespan could be nine times the cost of the original investment. A well designed entrance flooring system will prevent dirt and moisture from being tracked and thereby prolong the life of interior flooring and reduce cleaning, repair and overall maintenance costs.

- **Stops up to 95% of walked in dirt and moisture**
- **High moisture absorption**
- **Excellent dirt storage/soil hiding**
- **Durable construction: using a 60% wool/40% Nylon mix**
- **PVC and phthalate free**
- **Cut to size/shape option**
- **All references stocked for quick delivery**
- **Reduces cleaning costs and prolongs the lifetime of on board floor coverings and finishes.**

Coral Marine FR is a cut pile floor covering consisting of 60% wool and 40% Nylon. It is the ideal choice for an entrance system, simultaneously absorbing moisture and removing dry soiling. Coral entrance systems can reduce cleaning costs and prolong the life of on-board floor finishes and coverings.

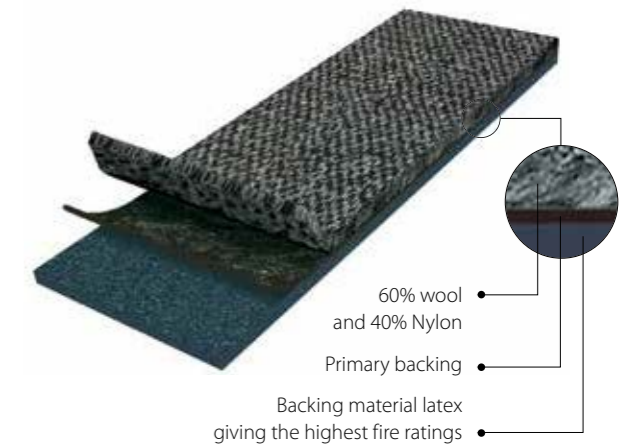
Coral Marine FR meets all the fire safety standards set by the International Maritime Organization (IMO) for products used in seagoing vessels. Yarn and backing systems have been developed to meet the stringent smoke toxicity and low flame spread standards required to achieve the IMO 'wheelmark'.

As a result Coral Marine FR can be used with confidence in cruise liners, passenger ferries, charter boats and other seagoing vessels, in addition to offshore facilities where the 'wheelmark' classification is required.

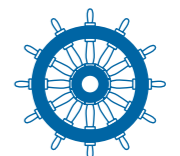


Coral Marine FR | Santos brown

Coral Marine FR construction



Coral Marine FR is IMO tested and approved, and wheelmarked in accordance with the Maritime Equipment Directive (MED).



0493/17 164.117/EC0493/Forbo_2017_0001



Coral marine FR | Hong Kong red

coral[®] marine FR



4210 | Rotterdam black



4201 | Singapore grey



4230 | New York black



4207 | Panama blue



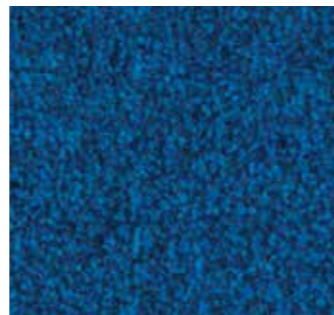
4223 | Hong Kong red



4204 | Santos brown



4226 | Tangier brown



4222 | Sydney blue

TECHNICAL SPECIFICATIONS – CORAL MARINE FR

Technical specifications

	Total thickness	ISO 1765	Approx. 9 mm
	Area of use		Heavy use
	Roll width		185 cm
	Roll length		Roll length approx 27.5 m (customisable)
	Colour fastness ratings:		
	Light	EN ISO 105/B02	> 5
	Rubbing	EN ISO 105/X12	4
	Water	EN ISO 105/E01	4-5
	Seawater	EN ISO 105/E02	4
	Shampoo	BS 1006	4-5
	Organic solvents	EN ISO 105/X05	5
	Construction		Tufted, 5/32" cut-pile
	Designs		Mottled
	Pile material		60% Wool / 40% polyamide
	Tuft base		Non-woven polyester
	Backing		FR latex
	Total weight	ISO 8543	Approx. 2550 gram/m ²
	Pile installation weight	ISO 8543	Approx. 1120 gram/m ²
	Pile thickness	ISO 1766	Approx. 6 mm
	Pile density	ISO 8543	0.141 gram/cm ³
	Number of tufts	ISO 1763	Approx. 96,400/m ²
	Impact noise reduction	EN ISO 717-2	Δ Lw = 31 dB
	Sound absorption	EN ISO 354:2003	f(Hz): 125 250 500 1000 2000 4000 αp: 0.05 0.05 0.1 0.3 0.55 0.6
	Slip resistance	EN 13893	DS
	Body voltage	ISO 6356	< 2.0 kV antistatic
	Thermal resistance	ISO 8302	0.125 m ² K/W
	Fire rating:*		
	IMO Resolution A653(16)		Pass
	IMO Resolution MSC 307(88) Annex 1 Parts 2 and 5		Pass
	US Coast Guard approval ref: 164.117EC0493		EC0493/17

*IMO tested and approved using 3mm steel subfloor and IMO certified Coral Fix, acrylic dispersion adhesive.

Final production might vary within commercial tolerances from sample.
Manufacturing specifications subject to normal industry tolerances.
Forbo reserves the right to improve the specification of its products without giving prior notice.
Errors and omissions excepted.



0493/17 164.117/EC0493/Forbo_2017_0001



flotex® FR

THE ONLY **IMO CERTIFIED,**
WASHABLE, TEXTILE
FLOOR COVERING

Flotex Vision FR | Cord orange

flotex® FR

Flotex FR is a unique, textile flocked floor covering, combining the cleaning properties and durability of a resilient flooring with the comfort, slip resistance and acoustic properties usually associated with textiles.

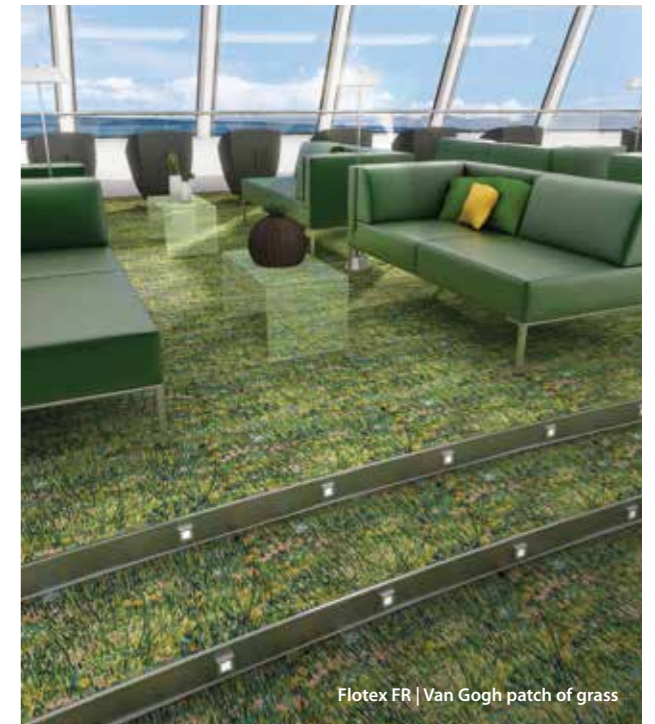
- High definition print offers you complete freedom of design
- Bespoke design service
- Lightweight approximately 1225 gram/m²
- Easy to clean
- Impervious backing makes it suitable for wet cleaning
- Excellent acoustic properties up to 22 dB
- Smooth textile velour like surface that is comfortable and warm underfoot
- Slip resistance >0.30
- Durable construction: using Nylon 6.6
- Improved indoor air quality (independently proven by Allergy UK)
- Easy to repair any damaged areas
- Flotex is ortho-phthalate free
- Cut to size/shape option.

Flotex FR is extremely dimensionally stable and has a velour-like surface whilst being functional and extremely easy to clean.

Having been awarded the prestigious Allergy UK™ Seal of Approval, Flotex FR is proven to reduce allergens, improving indoor air quality for passengers.

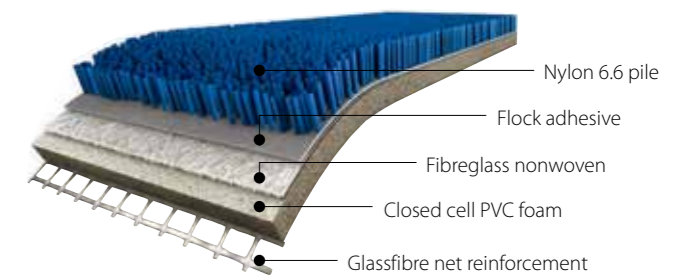
Flotex FR can be digitally printed. Its high definition quality and specialist printing technology allow for large endless pattern repeats and vivid lifelike colours. This creates a new dimension for Flotex FR and provides ultimate design flexibility for marine environments.

Where IMO certified material is required, please ensure that 'FR' is clearly noted on all orders.



Flotex FR | Van Gogh patch of grass

Flotex FR construction



Flotex FR is IMO tested and approved, and wheelmarked in accordance with the Maritime Equipment Directive (MED).



1121/13 164.117/1121/WCL MED0364

FLOTEX FR – CUSTOM DESIGN SERVICE

Create your own masterpiece using our custom design service alongside our high definition printing technology. Our experienced designers can help at any stage in the design process, depending on what involvement you require.

If you are looking for design ideas, re-colouration of existing designs or help with the development of a unique design that works perfectly with your marine interior design scheme, then we have the resource to help. Alternatively, you can choose from over 500 existing references in our Colour, Vision and Designer collections.

STEPS IN THE CUSTOM DESIGN PROCESS:



FLOTEX FR OFFERS REAL DESIGN FREEDOM



Flotex FR | bespoke design

flotex® FR collections

Flotex Colour FR

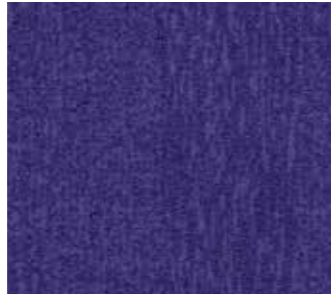
A collection of four semi plain designs. The full colour palette can be viewed on pages 14 and 15.

Metro



Available in 35 colourways

Penang



Available in 21 colourways

Calgary



Available in 22 colourways

Canyon



Available in 12 colourways



Flotex Colour FR | Metro grey

Flotex Vision FR

With over 500 individual items to choose from, plus the option to re-colour several designs, Flotex Vision is best viewed on our digital library (www.forbo-flooring.com/flotexvision) which is continuously updated. The designs fall into six broad categories of floral, image, lines, naturals, pattern and shape. High definition digital print designs that create superior textures and almost 3D like aesthetics.

Floral



Available in 118 references

Image



Available in 34 references

Lines



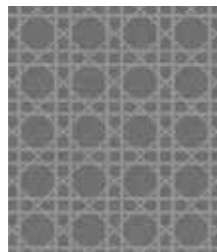
Available in 151 references

Naturals



Available in 57 references

Pattern



Available in 148 references

Shape



Available in 126 references

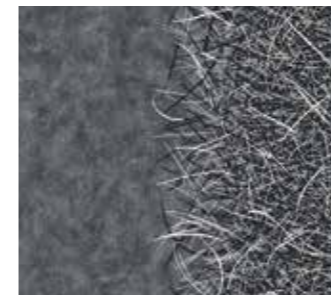


Flotex Vision FR | Weave linen

Flotex Designer FR

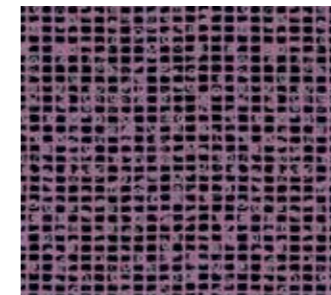
The collection includes designs based on famous designs by Philippe Starck, Tibor Reich, Sottsass and Hemingway.

flotex® by STARCK



Available in 77 references

flotex® tibor



Available in 82 references

flotex® sottsass



Available in 61 references

HEMINGWAYDESIGN X forbo



Available in 4 references



Flotex Tibor FR | Ziggurat aqua

Symbols, lettering and company logos can be easily incorporated.

flotex® colour FR



**Codes shown are for standard Flotex.
Where IMO certified material is required, please ensure that 'FR' is clearly noted on all orders.**

flotex® vision FR

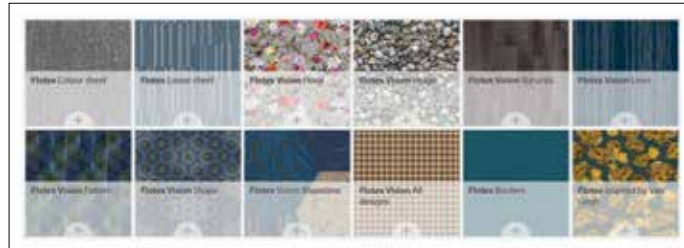
GO ONLINE AND DISCOVER OVER 500 DESIGNS FOR YOUR FLOOR

STEP 1

Access: www.forbo-flooring.com/flotexvision

STEP 2

Choose the design category (e.g. Flotex Vision Floral)



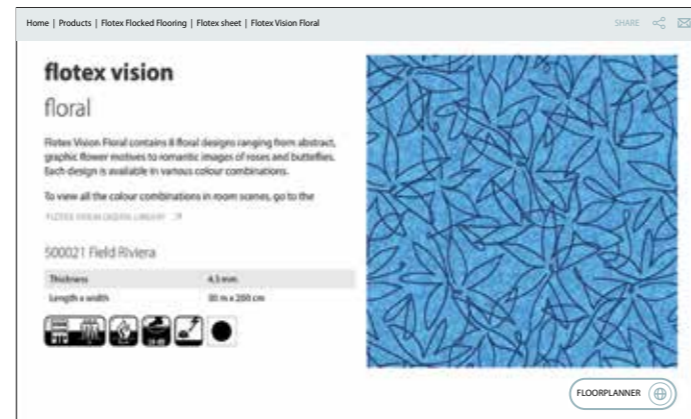
STEP 3

Click on the 'product' tab to see all the different design and colourway options available in that design category.



STEP 4

Choose the reference that you prefer (e.g. Flotex Vision – 500021 Field Riviera)



STEP 5

Click on the 'Floorplanner' link underneath the sample image – Here you can view that reference in a room setting. You can change the room scene and the flooring product/design/colour in order to get a good feel for how that reference looks in a room setting.



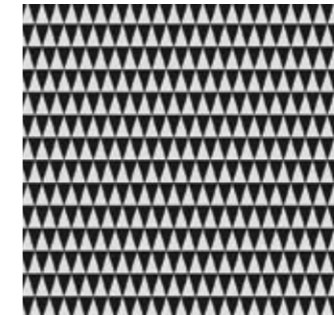
STEP 6

If you see a design that you like but the colourway options don't work for your project then contact us at transport@forbo.com to enquire if it would be possible to re-colour that particular design. Alternatively you can look to create something completely bespoke.

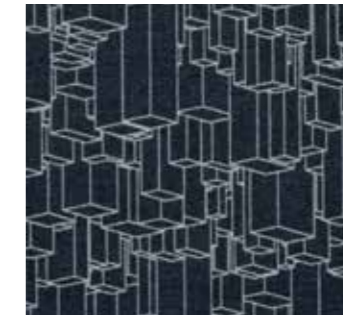
Shown here is only a selection of the total designs available. Most designs are available in numerous different colourway options. Flotex Vision is best viewed on our 'up-to-date' digital library: www.forbo-flooring.com/flotexvision



Titanium oak – 1 colourway available



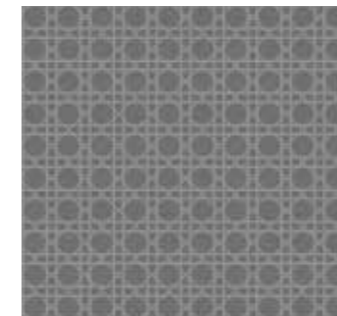
Pyramid – 10 colourways available



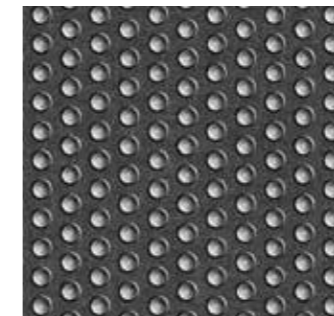
Metropolis – 2 colourways available



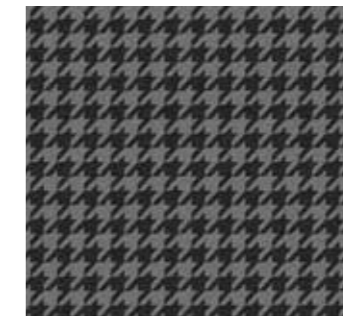
Zebra – 1 colourway available



Weave – 3 colourways available



Full Stop – 6 colourways available



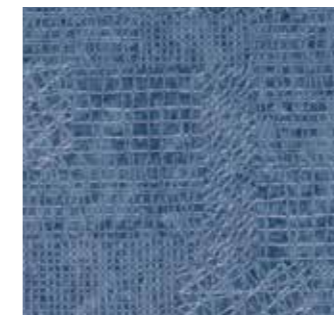
Check – 3 colourways available



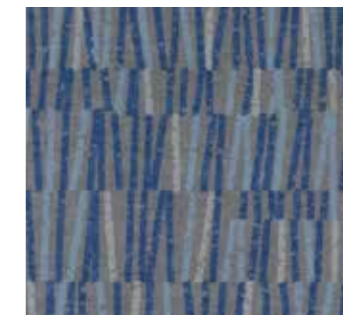
Heritage – 3 colourways available



Pavillion – 2 colourways available



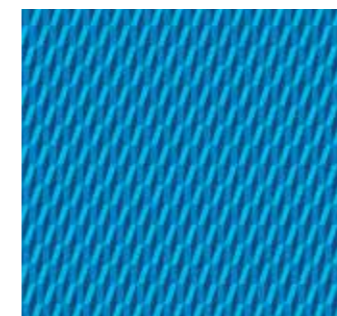
Network – 14 colourways available



Vector – 24 colourways available



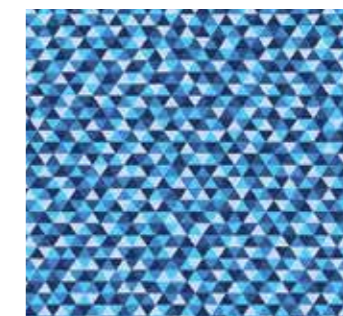
Spectrum – 8 colourways available



Lattice – 4 colourways available



Curve – 10 colourways available



Facet – 10 colourways available



Van Gogh – 5 designs available



Field – 30 colourways available



Text – 9 colourways available



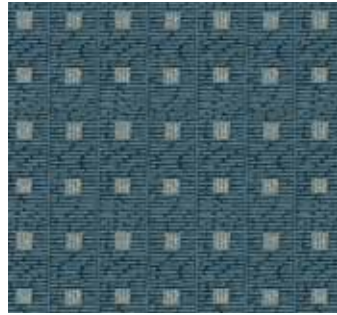
Helix – 6 colourways available



Pulse – 22 colourways available

flotex® vision FR

Shown here is only a selection of the total designs available. Most designs are available in numerous different colourway options. Flotex Vision is best viewed on our 'up-to-date' digital library: www.forbo-flooring.com/flotexvision



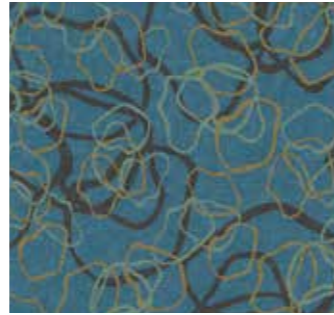
Grid – 12 colourways available



Collage – 10 colourways available



Silhouette – 12 colourways available



Contour – 14 colourways available



Flagstone – 1 colourway available



Botanical – 6 colourways available



Journeys – 17 colourways available



Star – 4 colourways available



Pebbles – 1 colourway available



Etch – 12 colourways available



Plaid – 18 colourways available



Wonderlab – 4 colourways available



Matrix – 8 colourways available



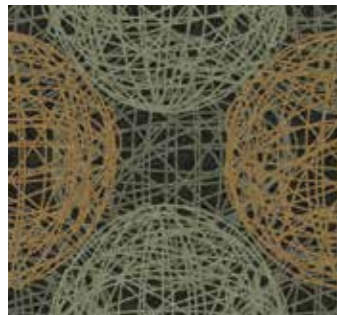
Farmhouse tile – 1 colourway available



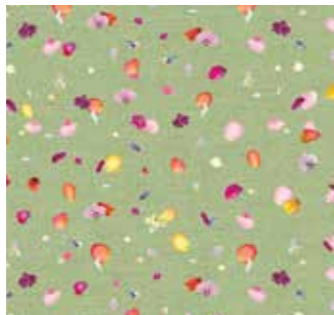
Ecosystems – 3 colourways available



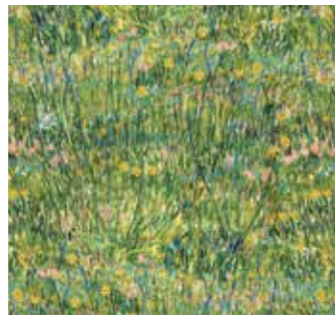
Linear elm – 1 colourway available



Globe – 10 colourways available



Floret – 6 colourways available



Van Gogh – 5 designs available



Grass – 1 colourway available



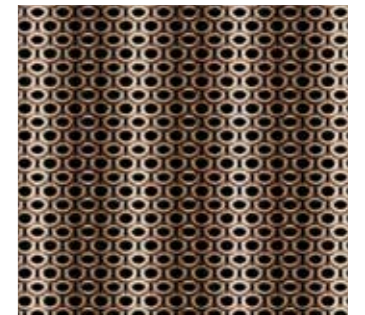
Orbit – 12 colourways available



Tension – 8 colourways available



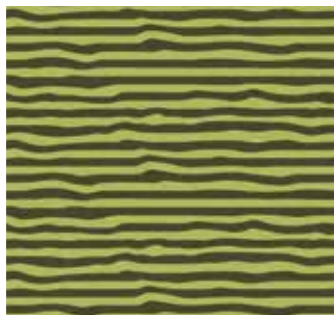
Reclaimed oak – 1 colourway available



Ring Pull – 8 colourways available



Cord – 34 colourways available



Groove – 9 colourways available



Autumn – 12 colourways available



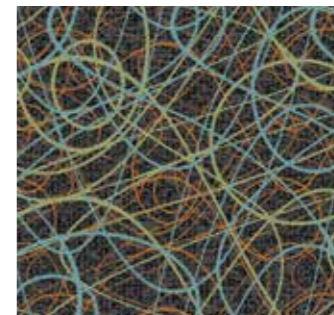
Van Gogh – 5 designs available



Mosaic – 5 colourways available



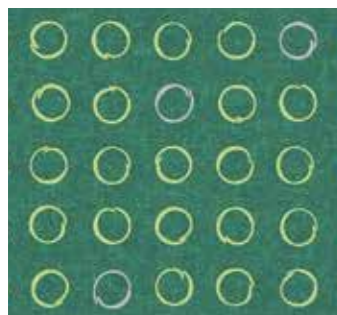
Chevron – 6 colourways available



Signature – 6 colourways available



Transit – 8 colourways available



Spin – 36 colourways available



Swirl – 9 colourways available



Van Gogh – 5 designs available



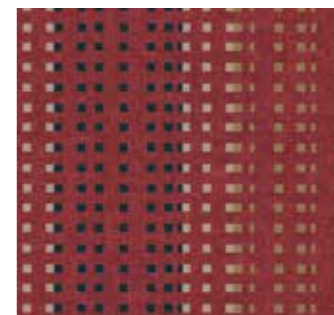
Firework – 14 colourways available



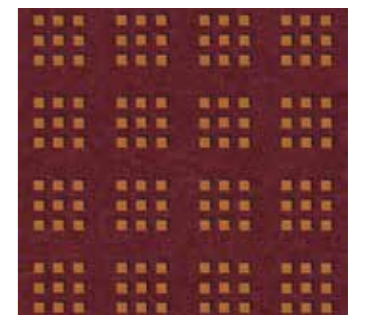
Blossom – 10 colourways available



Tangent – 8 colourways available



Trace – 22 colourways available



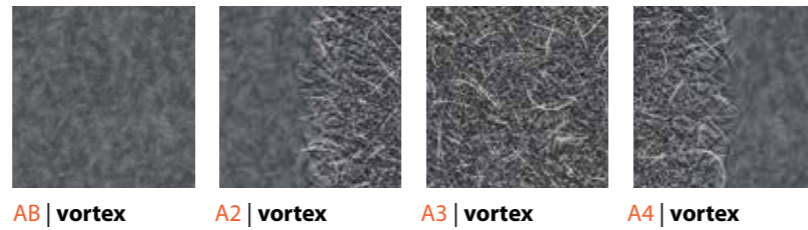
Cube – 16 colourways available

flotex® designer FR

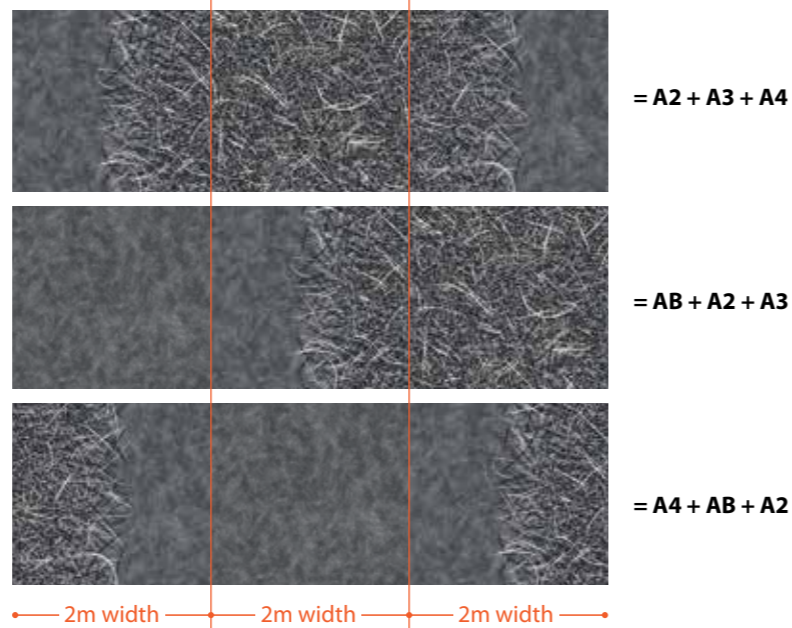
flotex® BY STARCK®

The 3 systems

Philippe Starck created a collection of 3 systems, named Artist, Twilight and Vortex. Each of them comes in four separate parts that can be freely associated to create patterns for your project that adapts to your needs and preferences.



Inspiration with 3 sheets (6 metres width):



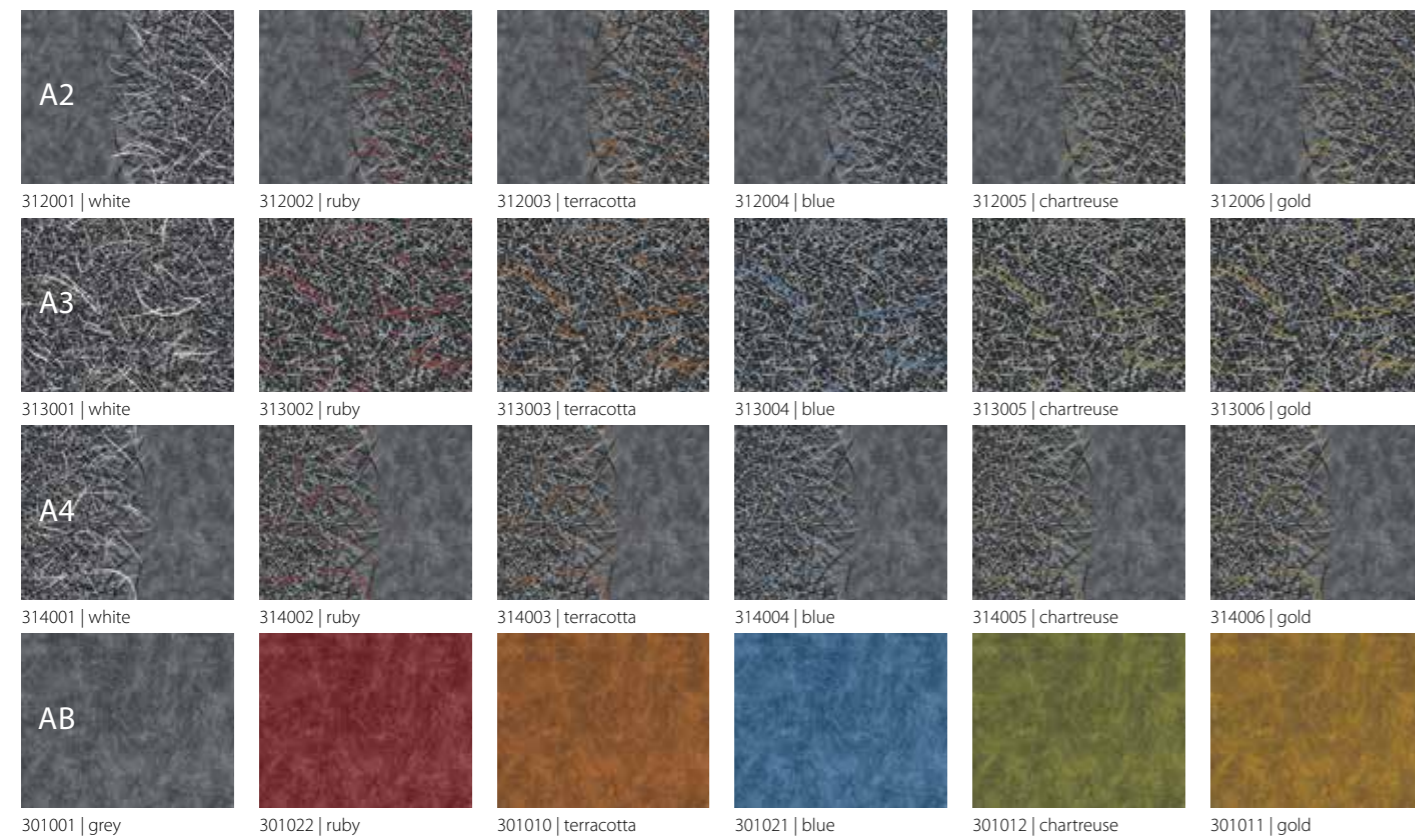
Combination and inspiration

Such flexibility makes combination possibilities almost endless. Some options are illustrated opposite.

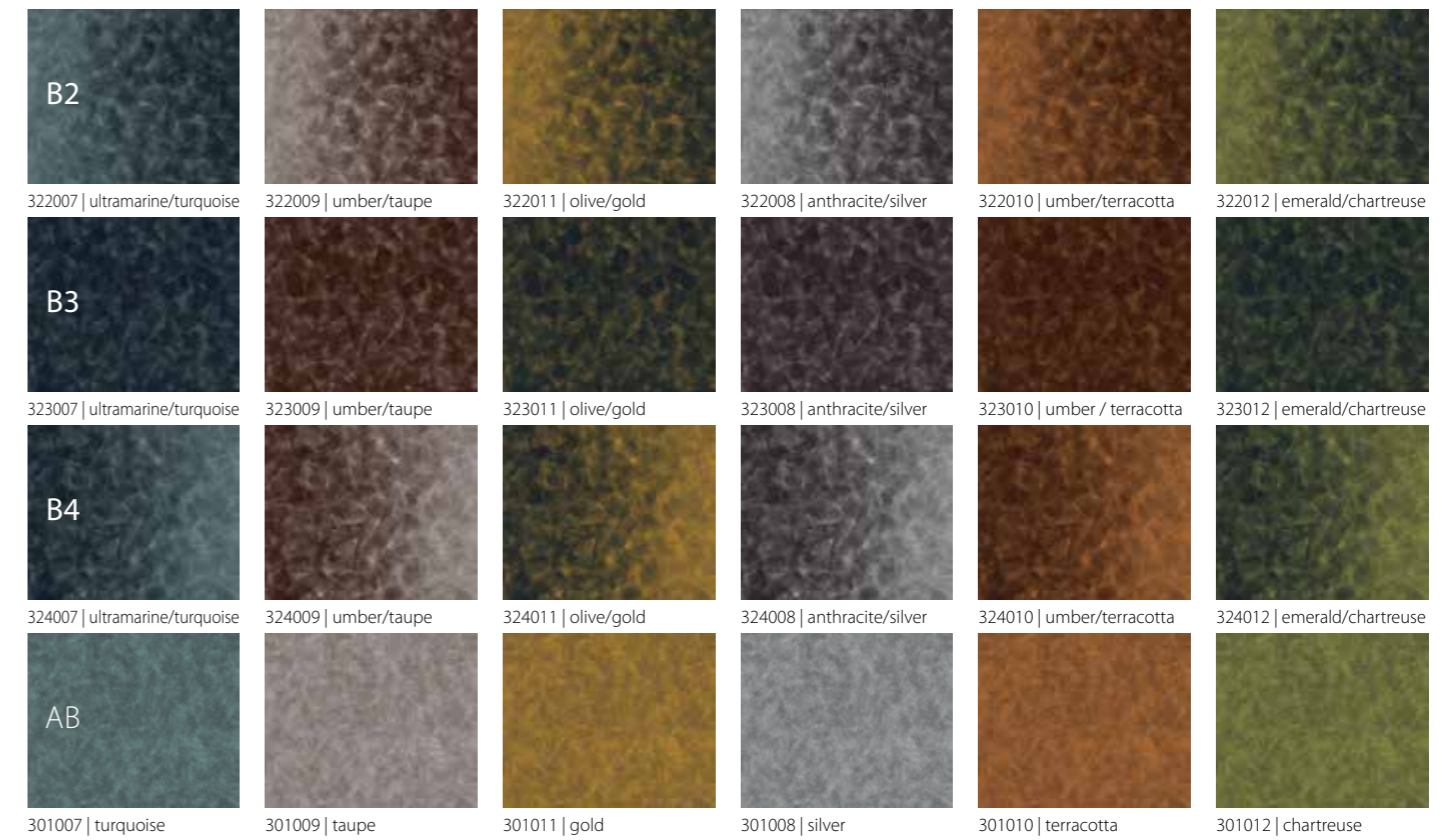
Inspiration with 3 sheets (6 metres width):

The full pattern of the design stretches six metres in width if you associate from left to right 3 sheets in the following order: starting with the left hand transitional design, the central design of two metres, then the right hand transitional design.

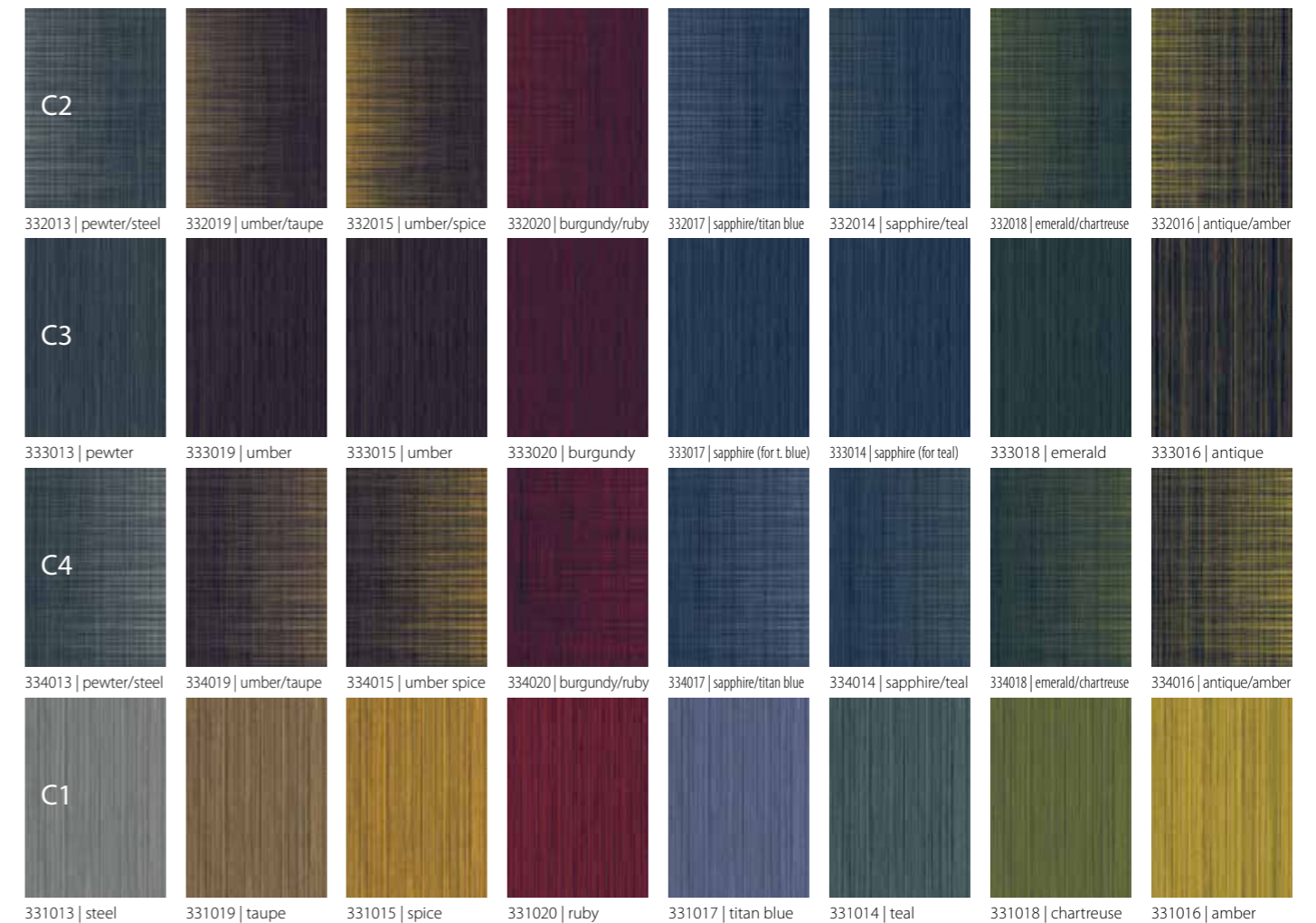
Vortex



Artist



Twilight

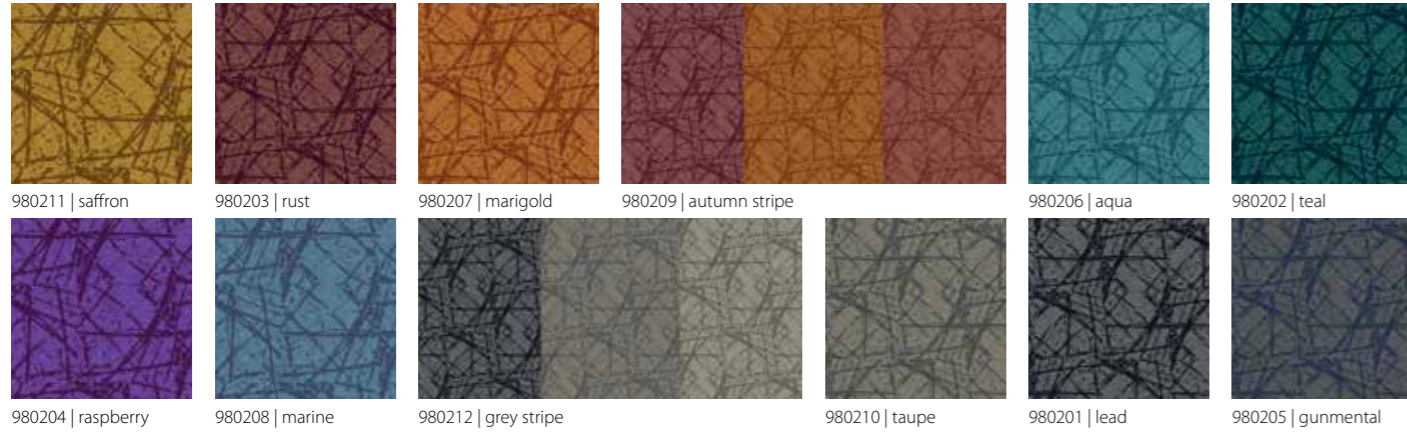


Codes shown are for standard Flotex. Where IMO certified material is required, please ensure that 'FR' is clearly noted on all orders.

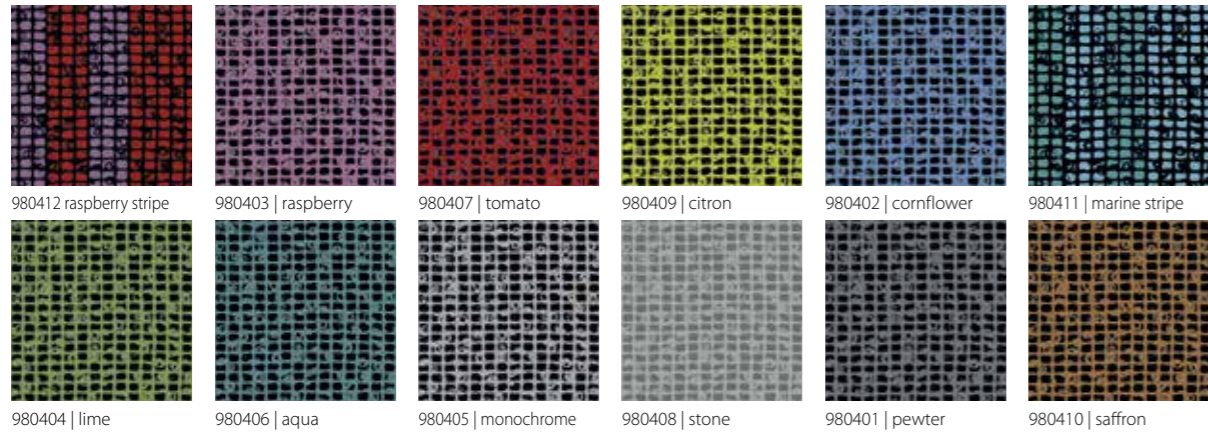
flotex® designer FR

flotex® tibor

Ziggurat



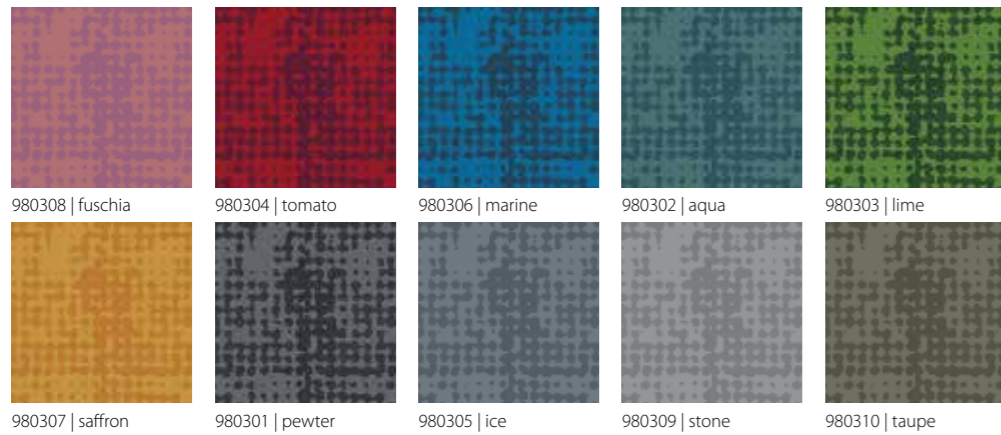
Mosaic



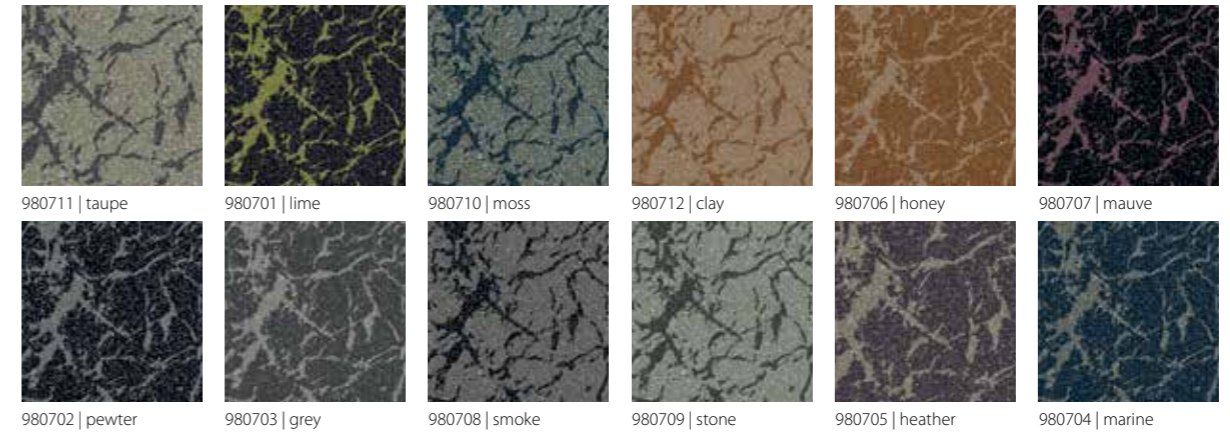
Quartz



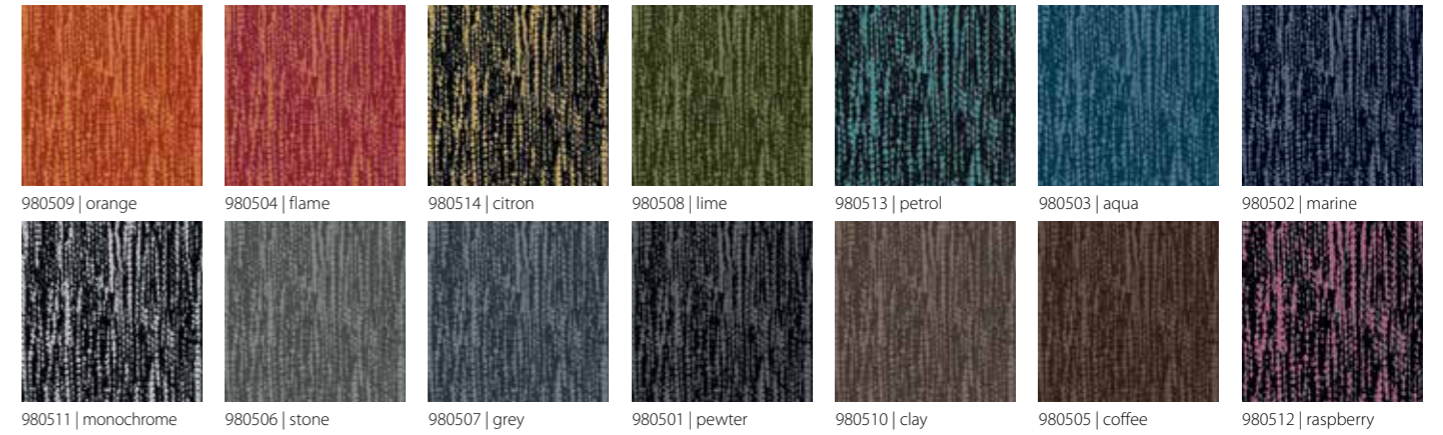
Tessello



Onyx



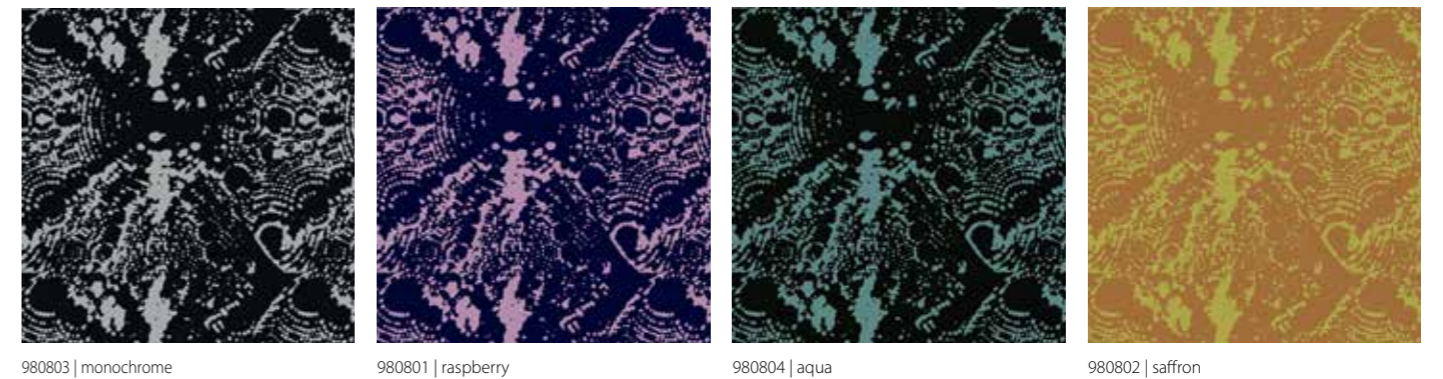
Tweedy



Arbor



Atomic



Codes shown are for standard Flotex. Where IMO certified material is required, please ensure that 'FR' is clearly noted on all orders.

flotex® designer FR

flotex® sottsass

Bacteria



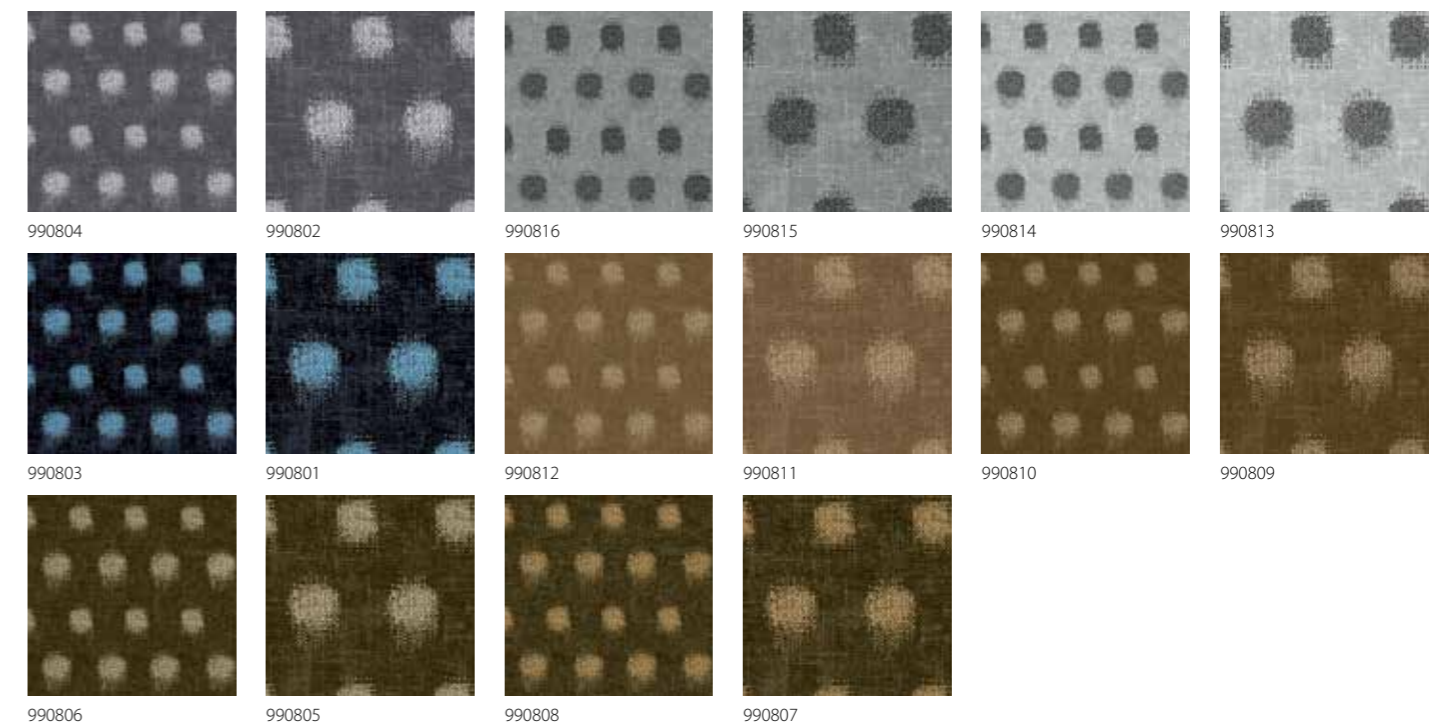
Terrazzo



Wool



Kasuri



HEMINGWAYDESIGN X Forbo FLOORING SYSTEMS



Hopscotch Hemingbone Mix & Match Fresh Cut Graph

Codes shown are for standard Flotex. Where IMO certified material is required, please ensure that 'FR' is clearly noted on all orders.



TECHNICAL SPECIFICATIONS – FLOTEX FR

Technical specifications

Flotex FR meets the requirements of EN 1307

	Total thickness	ISO 1765	Approx. 3.3 mm
	Wear classification	EN 1307	Class 33
	Roll width		200 cm
	Roll length		30 m
	Suitability for castor chairs	EN 985	Castor chair continuous use
Colour fastness ratings:			
	Light	EN ISO 105/B02	6
	Rubbing	EN ISO 105/X12	≥ 4
	Water	EN ISO 105/E01	≥ 4
	Pile material		100% polyamide
	Construction		Flocked textile floor covering
	Backing		Resilient waterproof backing
	Total weight	ISO 8543	Approx. 1225 gram/m ²
	Pile thickness	ISO 1766	Approx. 2 mm
	Impact noise reduction	EN ISO 717-2	Δ Lw = approx. 22 dB
	Dimensional stability	ISO 2551	≤ 0.20%
	Flexibility	ISO 24344	No cracking (10 mm diameter Mandrel)
	Electrical resistance	ISO 10965	Approx. >10 ⁹ Ω
	Comfort class	EN 1307	LC1

Flotex FR product meets the demands set by EN 14041

	Slip resistance	EN 13893	> 0.30
	Body voltage	ISO 6356	< 2.0 kV

Fire rating:*

IMO Resolution A653(16)	Pass
IMO Resolution MSC 307(88) Annex 1 Parts 2 and 5	Pass
US Coast Guard approval ref: 164.117/1121/WCL	MED0364

Flotex FR is made to order.

*IMO tested and approved using 3mm steel subfloor and IMO certified Eurocol 640, acrylic dispersion adhesive.

Final production might vary within commercial tolerances from sample. Manufacturing specifications subject to normal industry tolerances. Forbo reserves the right to improve the specification of its products without giving prior notice. Errors and omissions excepted.



Where IMO certified material is required, please ensure that 'FR' is clearly noted on all orders.

Forbo Flooring Systems is part of the Forbo Group, a global leader in flooring and movement systems, and offers a full range of flooring products for commercial and affordable housing and new build markets. High quality linoleum, vinyl, textile, flocked and entrance flooring products combine functionality, colour and design, offering total flooring solutions for any environment.



What to do now?

For more information about any of the products and services offered by Forbo Flooring Systems, to request samples/brochures or a visit then contact us:

Email: transport@forbo.com
Website: www.forbo-flooring.com/marine
Tel: **+44 (0)1773 744121**

Let us keep you up-to-date

 LinkedIn: **Forbo Flooring Transport**

 **@forbotransport**

TRANSPRESS

Sign up for our quarterly marine newsletter via our website:

www.forbo-flooring.com/transport

- Product information
- Design inspiration
- Forbo transport news
- Industry news

All countries

Forbo Flooring UK Limited
High Holborn Road
Ripley
Derbyshire
DE5 3NT
UK
T: +44 (0) 1773 744121
E-mail: transport@forbo.com
www.forbo-flooring.com/marine

Germany

Forbo Flooring GmbH
Steubenstraße 27
D-33100 Paderborn
Deutschland
T: +49 5251 1803-0
www.forbo-flooring.de



France

Forbo Sarlino SAS
63, rue Gosset
BP 62717
51055 Reims Cedex
France
T: +33 3 26 77 30 30
www.forbo-flooring.fr

USA

Forbo Flooring NA
Humboldt Industrial Park
8 Maplewood Drive
PO Box 667
Hazleton, PA 18202
USA
T: 1-800-842-7839
www.forboflooringna.com