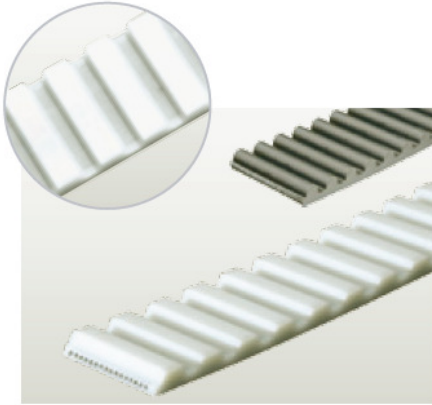


siegling proposition

timing belts



Timing belts in wet areas

Properties/Advantages

- Protection of the timing belts that are in direct contact with water or other liquids
- Available with stainless steel cords to prevent corrosion.
- Available with enclosed tension members (both steel and kevlar); The transverse groove in the tooth space is eliminated.

Applications

- Car washing plants
- Food industries
- Conveying systems
- Outside door openers

Basic technical data

Types available with stainless steel cords:

T10-L, T20, T20-L, AT10, AT10-L, AT20, HTD 8M, HTD 14M and L

Types available with enclosed steel tension members:

T10, AT10-E, HTD 8M

Types available with enclosed kevlar tension members:

All standard types

185.2

FMS · Reproduction of text or parts thereof only
with our approval.

Modifications reserved.

Forbo Siegling Nederland BV
Van Rensselaerweg 1
NL – 6956 AV Spankeren
Tel +31 313 491105, Fax +31 313 4922314
Email: oscar.rondeel@forbo.com

Siegling – total belting solutions

Forbo

MOVEMENT SYSTEMS