



Alcatifas agulhetadas

markant | forte | showtime®



30 ml env. x 2 m
40 ml env. x 2 m



50 x 50 cm

Criamos ambientes melhores

forbo
FLOORING SYSTEMS

markant

30 ml env. x 2 m



$\Delta L_w = 21$ dB



Folhas não invertidas



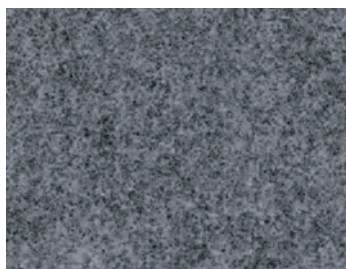
07F1DF88



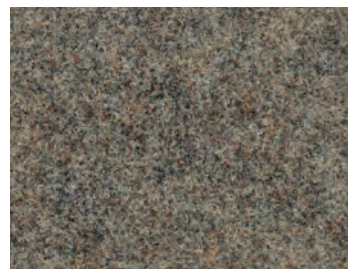
11110 | quartz



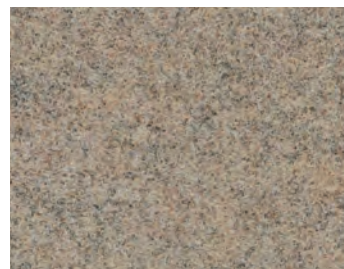
11107 | glacier



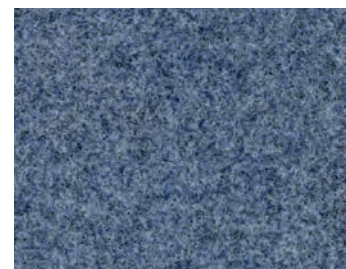
11100 | smoke



11113 | taupe



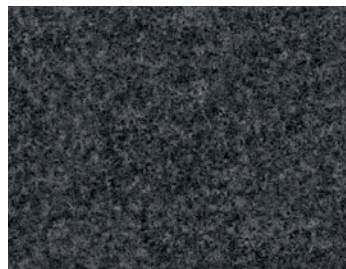
11103 | sand



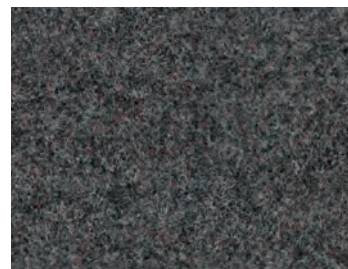
11107 | glacier



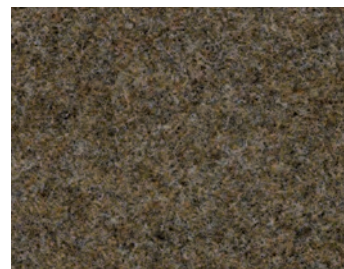
11108 | field



11109 | charcoal



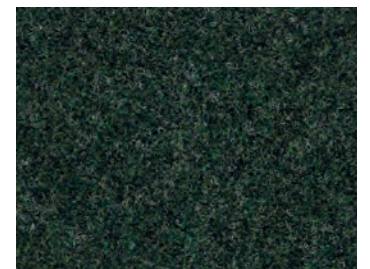
11112 | nickel



11105 | desert



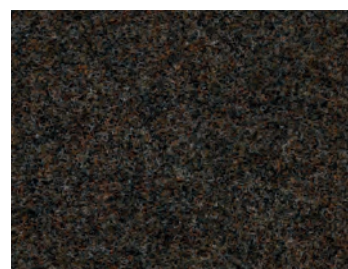
11127 | storm



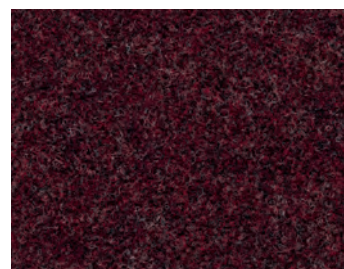
11118 | forest



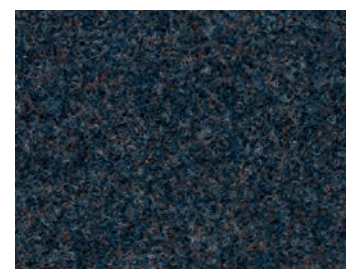
11119 | jet



11115 | ebony



11126 | merlot



11137 | atlantic



11117 | marine

forte  30 ml env. x 2 m



U3s P3

$\Delta L_w = 22$ dB

Folhas não invertidas

4EE0AF7C

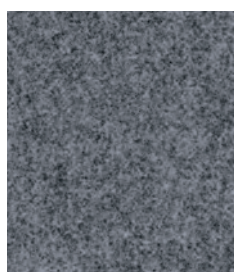
forte tile  50 x 50 cm



Forte tráfico

$\Delta L_w = 22$ dB

Forte: 25 referências, 12 das quais disponíveis em mosaicos e identificadas pela letra (T). Na sua encomenda, indique as referências com 5 números para a versão em rolo (ex. 96010) ou o código seguido da letra T para a versão em mosaico (ex. 96010T).



96000 (T) | smoke

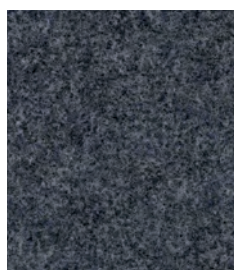


96010 (T) | quartz

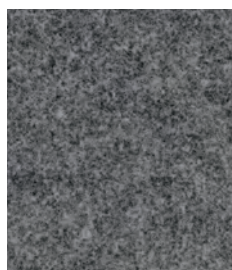


96003 | sand

96008 (T) | field



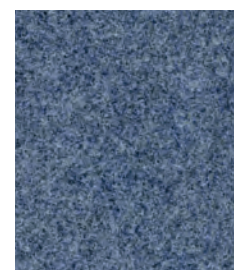
96001 | silver



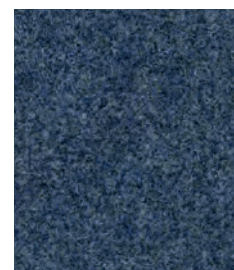
96002 (T) | granite



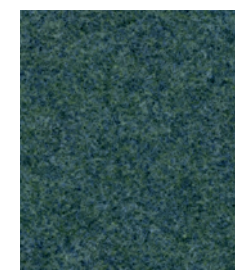
96013 | taupe



96007 | glacier



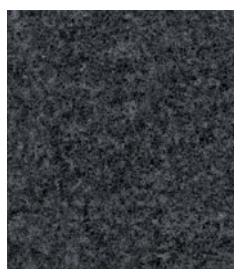
96017 (T) | marine



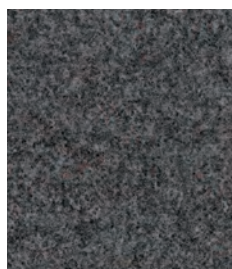
96038 | aqua



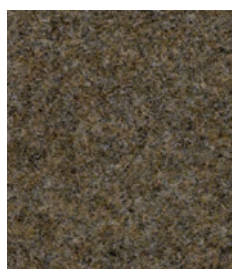
96035 | orange



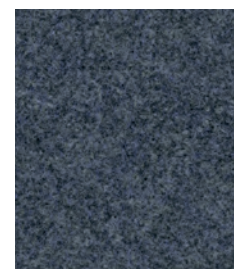
96009 (T) | charcoal



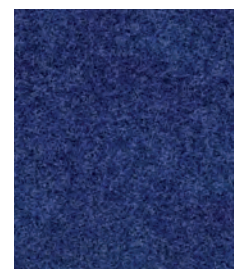
96012 (T) | nickel



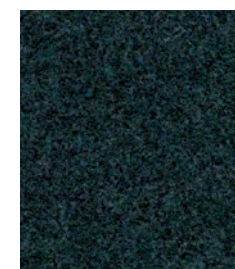
96005 | desert



96027 (T) | storm



96057 (T) | lagoon



96028 | glade



96036 (T) | rouge



96069 | black



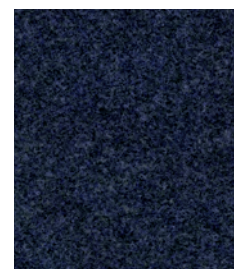
96019 (T) | jet



96015 | ebony



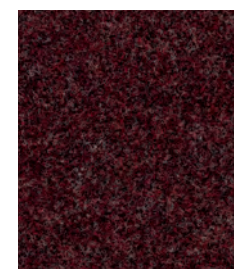
96037 | atlantic



96047 (T) | pacific



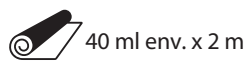
96018 | forest



96026 | merlot



showtime[®] colour



showtime[®] graphic

Não conectável.
Ver todas as referências disponíveis na brochura.



900267 | nautical



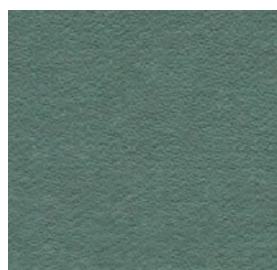
loft



900262 | slate



900261 | platinum



900268 | celadon



900265 | sunshine



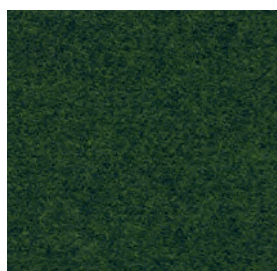
ecosystem 07



900272 | steel



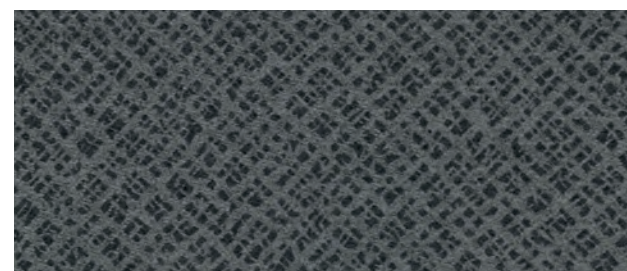
900263 | sable



900278 | pastoral



900266 | rose



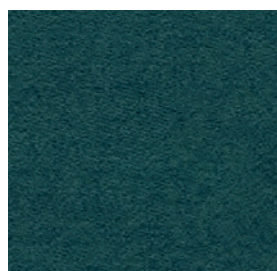
heritage 05



900269 | carbon



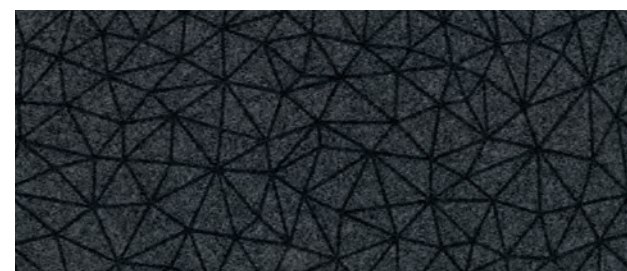
900273 | sandstone



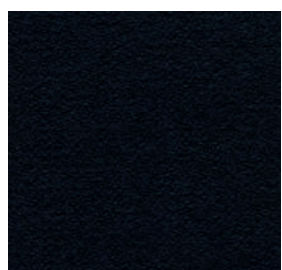
900288 | jade



900276 | terracotta



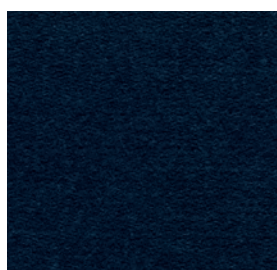
wonderlab 06



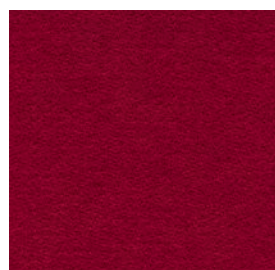
900279 | noir



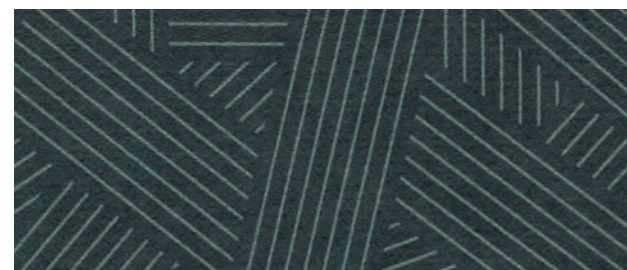
900274 | espresso



900277 | indigo



900286 | ruby



wonderlab 07

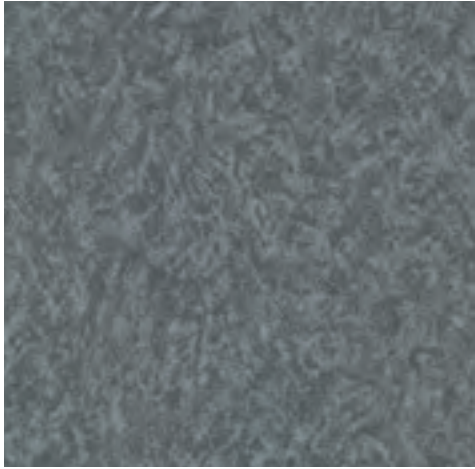


markant | forte | showtime®

Especialista no fabrico de pavimentos alcatifa agulhetada há mais de 40 anos, a Forbo Flooring oferece 3 colecções ideais para áreas de tráfego intenso. Resistentes e duráveis graças às suas fibras de poliamida de alta qualidade, e protegidos por uma impregnação completa de látex, os nossos pavimentos agulhetados são fáceis de manter e oferecem um ambiente acolhedor e de design.

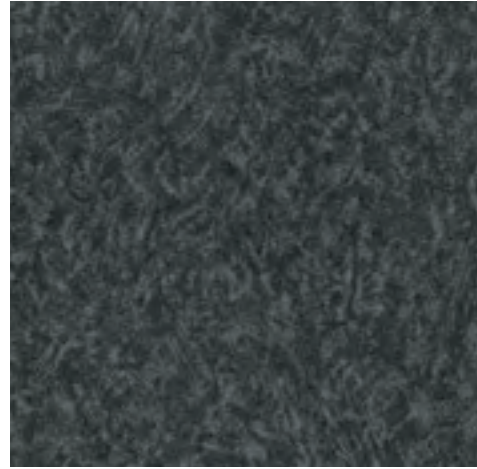
Os nossos produtos não só contribuem para o conforto dos seus espaços, graças ao seu desempenho acústico e às suas propriedades dissipativas, como também ajudam a criar um melhor ambiente: são fabricados com uma base de poliéster 100% reciclado (ou seja, até 65% de conteúdo reciclado no peso total do produto) e possuem rótulo GuT.

showtime[®] graphic Loft



946261 | platinum

LRV 15%



946262 | slate

LRV 7%



946273 | sandstone

LRV 5%



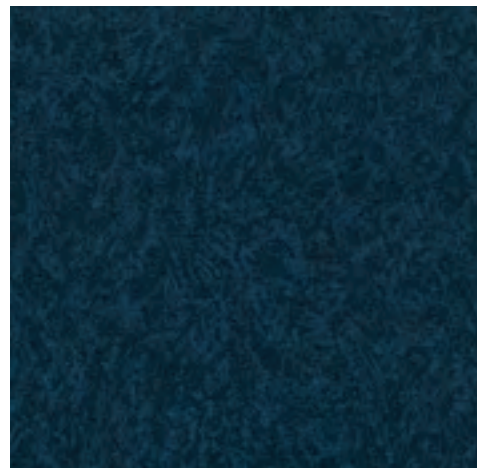
946272 | steel

LRV 3%



946286 | ruby

LRV 4%



946267 | nautical

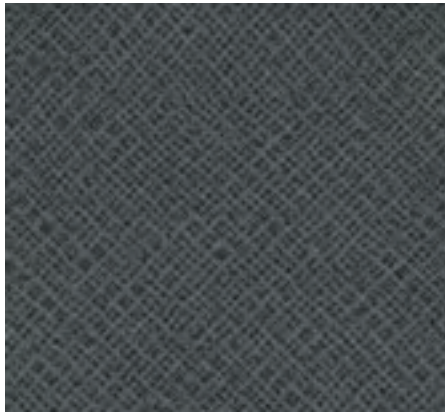
LRV 3%



Loft 946273 | sandstone

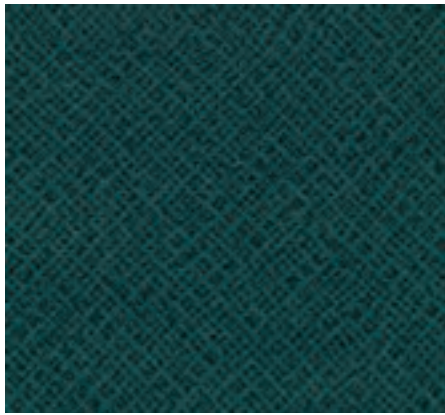


showtime® graphic Heritage 05



930262 | slate

LRV 8%



930288 | jade

LRV 5%



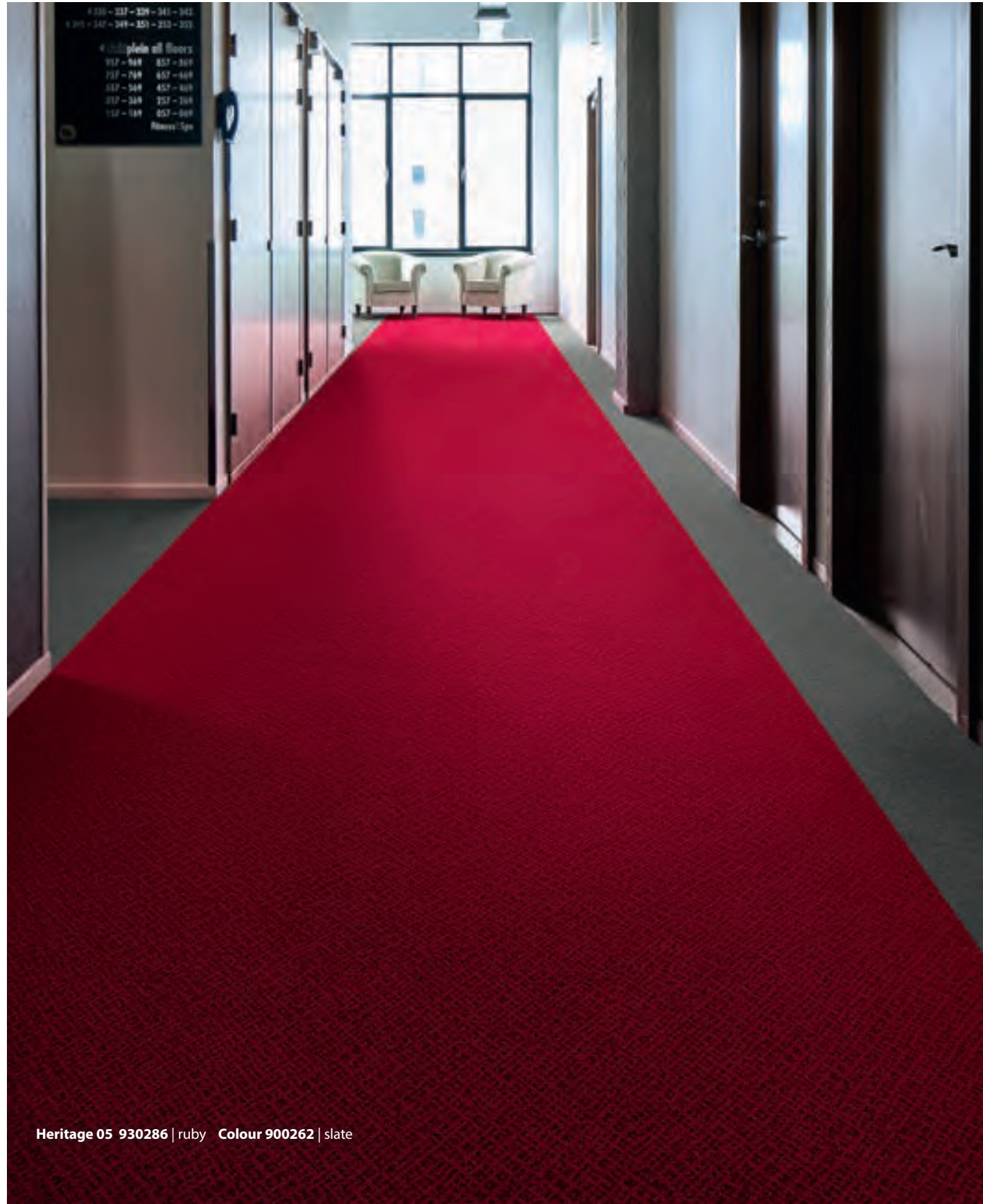
930267 | nautical

LRV 3%



930286 | ruby

LRV 4%

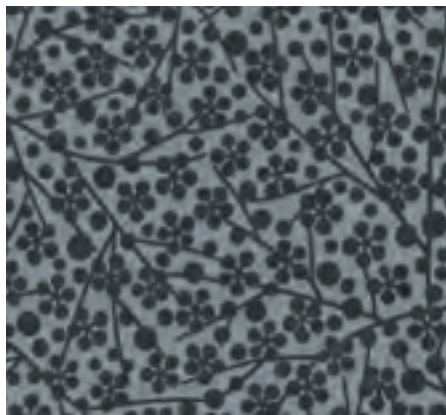


Heritage 05 930286 | ruby Colour 900262 | slate

showtime® graphic Ecosystem 07

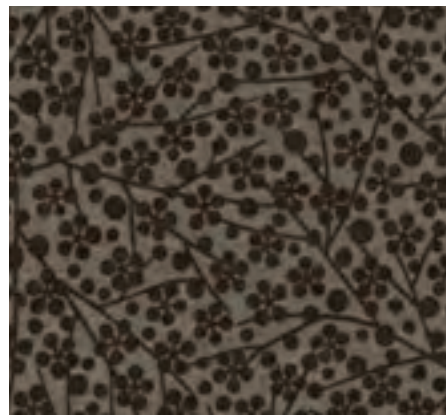


Ecosystem 07 936288 | jade 936268 | celadon



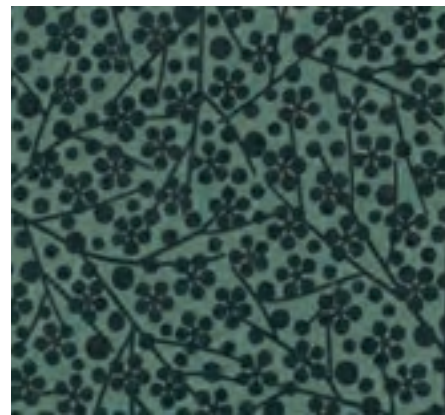
936261 | platinum

LRV 12%



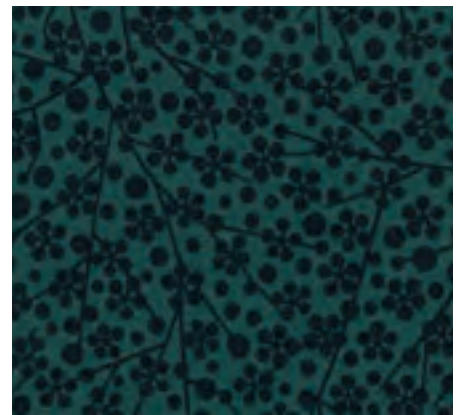
936273 | sandstone

LRV 8%



936268 | celadon

LRV 10%



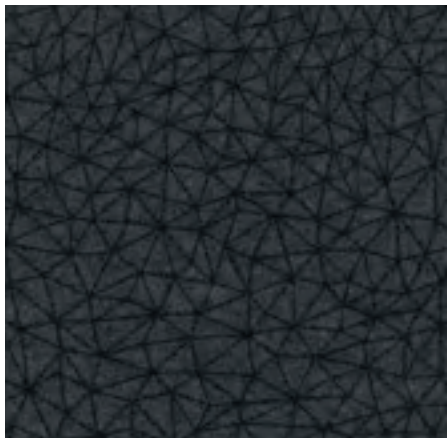
936288 | jade

LRV 4%



Wonderlab 06 943267 | nautical 900277 | indigo

showtime[®] graphic Wonderlab 06

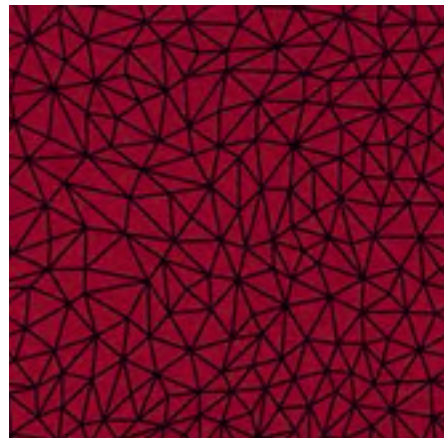


943272 | steel



LRV 4%

943288 | jade



LRV 5%

943286 | ruby



LRV 4%

943267 | nautical

LRV 3%



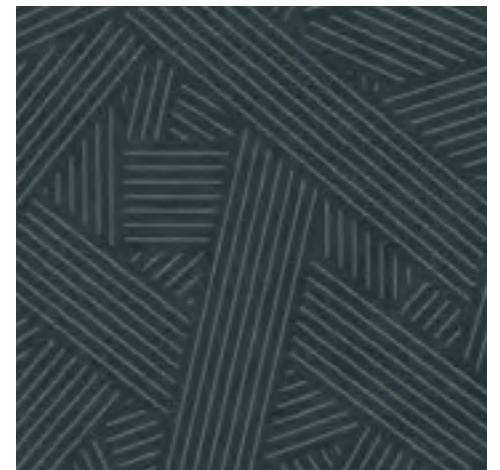
Wonderlab 07 944261 | platinum

showtime[®] graphic Wonderlab 07



944261 | platinum



LRV 12%



944268 | celadon

LRV 6%

Caractéristiques techniques

		Showtime colour	Showtime graphic	Markant	Forte	Forte tile
 Conformité NF EN 14041		Sim	Sim	Sim	Sim	Sim
Reação ao fogo	NF EN 13501-1	C _{fl} -s1 ⁽¹⁾	C _{fl} -s1 ⁽¹⁾	B _{fl} -s1 ⁽²⁾	C _{fl} -s1 ⁽¹⁾	B _{fl} -s1 ⁽²⁾
Reação ao fogo - Relatório de ensaio		-	-	n° 402099-04 (TFI)	n° 2018/026-1 (CRET)	n° 2020/119-1 (CRET)
Resistência ao deslizamento	NF EN 13893	Classe DS (μ ≥ 0,30)	Classe DS (μ ≥ 0,30)	Classe DS (μ ≥ 0,30)	Classe DS (μ ≥ 0,30)	Classe DS (μ ≥ 0,30)
Acumulação de cargas electrostáticas	ISO 6356	E ≤ 2 kV, Antiestático	E ≤ 2 kV, Antiestático	E ≤ 2 kV, Antiestático	E ≤ 2 kV, Antiestático	E ≤ 2 kV, Antiestático
Conductividade térmica	NF EN ISO 10456	0,06 W/(m.K), adequado para aquecimento por piso radiante	0,06 W/(m.K), adequado para aquecimento por piso radiante	0,06 W/(m.K), adequado para aquecimento por piso radiante	0,06 W/(m.K), adequado para aquecimento por piso radiante	0,06 W/(m.K), adequado para aquecimento por piso radiante
Resistência eléctrica transversal	ISO 10965	-	-	≤ 10 ⁹ Ω. Dissipador	≤ 10 ⁹ Ω. Dissipador	-
Resistência térmica	ISO 8302	-	-	0,06 m ² .K/W	0,07 m ² .K/W	0,07 m ² .K/W
Certificação		Não	Não	Sim	Sim	Sim
Classificação UPEC	QB 31	-	-	U3 P3 E1 C0	U3s P3 E1 C0	-
Certificado QB UPEC 	QB 31 ⁽⁴⁾	-	-	304TA-007.2	304TA-005.2 ⁽³⁾	-
Espessura total	NF ISO 1765	4,9 mm	4,9 mm	5 mm	6 mm	6,2 mm
Espessura da camada de desgaste		1,6 mm	1,6 mm	2,3 mm	2,8 mm	2,3 mm
Massa total da superfície	NF ISO 8543	1 150 g/m ²	1 150 g/m ²	1 200 g/m ²	1 500 g/m ²	1 350 g/m ²
Camada de utilização da composição fibrosa	Regulamentos 1007/2011	100 % poliamida	100 % poliamida	100 % poliamida	100 % poliamida	100 % poliamida
Tipo de subpavimento		100 % poliéster reciclado	100 % poliéster reciclado	100 % poliéster reciclado	100 % poliéster reciclado	100 % poliéster reciclado
Eficiência acústica do ruído de impacto declarado	NF EN ISO 717-2	ΔL _w = 20 dB	ΔL _w = 20 dB	ΔL _w = 21 dB	ΔL _w = 22 dB	ΔL _w = 22 dB
Absorção sonora	NF EN ISO 354 / NF EN ISO 11654	α _w = 0,15 (H)	α _w = 0,15 (H)	α _w = 0,15 (H)	α _w = 0,20 (H)	α _w = 0,20 (H)
Som ao caminhar declarado	NF S 31-074	L _{n,e,w} < 65 dB, Classe A	L _{n,e,w} < 65 dB, Classe A	L _{n,e,w} < 65 dB, Classe A	L _{n,e,w} < 65 dB, Classe A	L _{n,e,w} < 65 dB, Classe A
Especificações declaradas		NF EN 1307	NF EN 1307	NF EN 1307	NF EN 1307	NF EN 1307
Classe de utilização residencial	NF EN 1307	23	23	-	-	-
Classe de utilização comercial	NF EN 1307	32 ⁽⁵⁾	32 ⁽⁵⁾	33 ⁽⁶⁾	33 ⁽⁷⁾	33 ⁽⁸⁾
Resistência da cadeia de rodas	NF EN 985	Sim	Sim	Sim	Sim	Sim
Formato		larguras	larguras	larguras	larguras	ladrilhos
Largura do rolo	NF EN 14159	2 m	2 m	2 m	2 m	-
Comprimento dos rolos	NF EN 14159	40 ml env.	40 ml env.	30 ml env.	30 ml env.	-
Dimensões das placas e embalagem		-	-	-	-	50 x 50 cm 16 ladrilhos por caixa, ou seja, 4 m ²
Método de instalação		larguras não invertidas	larguras não invertidas	larguras não invertidas	larguras não invertidas	monolítico
Adesivo ou fixador Forbo recomendado		522 eurosafe tack	522 eurosafe tack	522 eurosafe tack	522 eurosafe tack	542 eurofix tack plus
REACH (Regulamento Europeu)	1907/2006/CE	Conformidade ⁽⁹⁾	Conformidade ⁽⁹⁾	Conformidade ⁽⁹⁾	Conformidade ⁽⁹⁾	Conformidade ⁽⁹⁾
Emissões para o ar: TVOC* aos 28 dias	NF EN 16516	< 100 µg/m ³ ⁽¹⁰⁾	< 100 µg/m ³ ⁽¹⁰⁾	< 100 µg/m ³ ⁽¹⁰⁾	< 100 µg/m ³ ⁽¹⁰⁾	< 100 µg/m ³ ⁽¹⁰⁾
Requisitos para a classe A+		< 1 000 µg/m ³	< 1 000 µg/m ³	< 1 000 µg/m ³	< 1 000 µg/m ³	< 1 000 µg/m ³
Etiqueta GuT	n° GuT / Prodis	-	-	07F1DF88 ⁽¹¹⁾	4EE0AF7C ⁽¹¹⁾	-
Garantia		7 anos	7 anos	7 anos	7 anos	7 anos
Fabricação		Fabricado em França	Fabricado em França	Fabricado em França	Fabricado em França	Fabricado em França

(1) Sur support bois et incombustible A1fl ou A2fl, testé en pose collée / Satisfait à la réglementation M3.

(2) Sur support incombustible A1fl ou A2fl, testé en pose libre / Satisfait à la réglementation M3.

(3) Cette gamme de produits comprend des références U3 et U3s; il ne peut être obtenu un classement U3s dans un certificat que si plus de 80 % des coloris y répondent.

(4) Revêtements de sol textiles : <http://evaluation.cstb.fr>

(5) Classe de confort LC1 selon EN 1307.

(6) Classe de confort LC2 selon EN 1307.

(7) Classe de confort LC3 selon EN 1307.

(8) Classe de confort LC2 selon EN 1307.

(9) Les articles (produits) ne contiennent pas de substances de la liste candidate en vigueur publiée par l'ECHA (substances très préoccupantes) à déclarer dans le cadre du règlement REACH.

(10) Certificat d'émissions envoyé sur demande au service technique tél. +33 (0)3 26 77 30 55. * TVOC : composés organiques volatils totaux : quantité émise dans l'air intérieur (en toluène équivalent).

(11) Association pour les moquettes écologiques.

Toutes les entités de vente Forbo Flooring Systems sont certifiées ISO 9001 (management de la qualité).

Toutes les usines Forbo Flooring Systems sont certifiées ISO 14001 (management de l'environnement).

L'Analyse du Cycle de Vie (ACV) de l'ensemble des produits Forbo Flooring Systems est disponible dans les FDES.

Celles-ci sont téléchargeables sur nos sites internet.

Forbo Revestimentos

Forbo Revestimentos, SA
Z.I.Maia I, Setor VII
Trv. Eng. Nobre da Costa,87
4476-908 Maia

Telefone: +351 229 996 900

Fax: +351 229 996 909

email: info.revestimentos@forbo.com

Encontre-nos em



Criamos ambientes melhores



FLOORING SYSTEMS