



MARINE FLOOR COVERINGS

creating better environments

forbo
FLOORING SYSTEMS

CONTENTS

Coral Marine FR	04
Technical specification	07
Flotex Vision FR	08
Flotex Vision FR custom flooring	10
Flotex Vision FR bespoke design	12
Flotex Vision FR design freedom	14
Flotex Vision FR Designer/ Artist FR collections	18
Technical specification	21
Installation, cleaning & maintenance	22
Further information	23

Flotex Vision FR | Autumn chevron

Flotex Vision FR | Natural haven dune

CREATING BETTER MARINE ENVIRONMENTS

Forbo understands that material choice is one of the most critical aspects when designing for marine interiors.

The material sets the tone for the overall look and feel of a vessel with many criteria influencing the specification including aesthetics, durability, maintenance and the requirement of IMO certification. Add to this other performance requirements such as slip resistance, sound absorption, comfort, anti-static properties, cleanability and green credentials and it becomes obvious why flooring choice is a complex one.

Forbo Flooring Systems manufactures the widest range of floor coverings in the market and offers a portfolio of IMO and non IMO certified products. Our Key Account Managers will help you, and provide all the expert advice you need when selecting flooring for your marine projects. In addition to our core collections, we also offer a custom design service to help you create unique flooring designs that perfectly match your interior requirements.

Where IMO certification is not required for any particular marine project please note that Forbo Flooring Systems also have a wide portfolio of commercial floor coverings including; rigid and textile entrance systems, linoleum, vinyl, safety vinyl, luxury vinyl tile, flocked flooring, carpet tile and needlefelt floor coverings.



coral[®] marine FR

Coral is the market leader in entrance systems providing an exceptionally versatile and proven range of 'clean-off' entrance system products and customisable carpets.

Wet and dry soiling brought on board on the soles of shoes and the tyres of wheeled traffic, make interiors look dirty and unattractive, causes structural damage to interior floor coverings and finishes and creates unnecessary health and safety hazards. If effective measures are not taken to avoid this problem, the repair and maintenance costs of a typical floor covering over its lifespan could be nine times the cost of the original investment. A well designed entrance flooring system will prevent dirt and moisture from being tracked and thereby prolong the life of interior flooring and reduce cleaning, repair and overall maintenance costs.

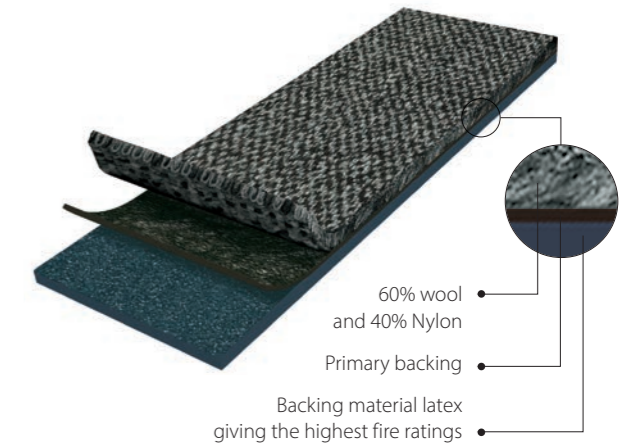
- **Stops up to 95% of walked in dirt and moisture**
- **High moisture absorption**
- **Excellent dirt storage/soil hiding**
- **Durable construction: using a 60% wool/40% Nylon mix**
- **PVC and phthalate free**
- **Cut to size/shape option**
- **All references stocked for quick delivery**
- **Reduces cleaning costs and prolongs the lifetime of on board floor coverings and finishes.**

Coral Marine FR is a cut pile floor covering consisting of 60% wool and 40% Nylon. It is the ideal choice for an entrance system, simultaneously absorbing moisture and removing dry soiling. Coral entrance systems can reduce cleaning costs and prolong the life of on-board floor finishes and coverings.

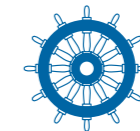
Coral Marine FR meets all the fire safety standards set by the International Maritime Organization (IMO) for products used in seagoing vessels. Yarn and backing systems have been developed to meet the stringent smoke toxicity and low flame spread standards required to achieve the IMO 'wheelmark'.

As a result Coral Marine FR can be used with confidence in cruise liners, passenger ferries, charter boats and other seagoing vessels, in addition to offshore facilities where the 'wheelmark' classification is required.

Coral Marine FR construction



Coral Marine FR is IMO tested and approved, and wheelmarked in accordance with the Maritime Equipment Directive (MED).



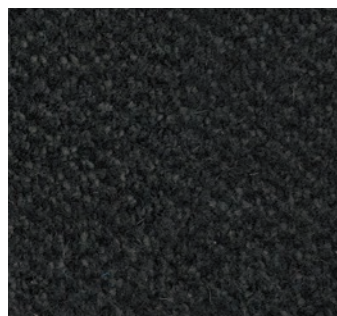
0493/17 164.117/EC0493/Forbo_2017_0001

UK_2023_0062_B

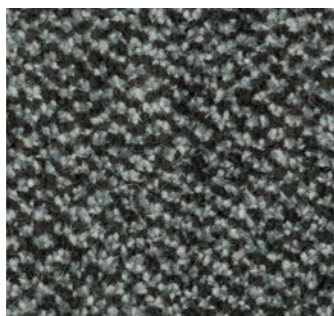


Coral Marine FR | Hong Kong red

coral[®] marine FR



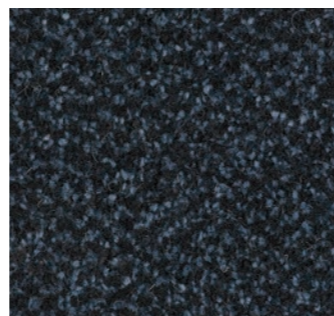
4210FR | Rotterdam black



4201FR | Singapore grey



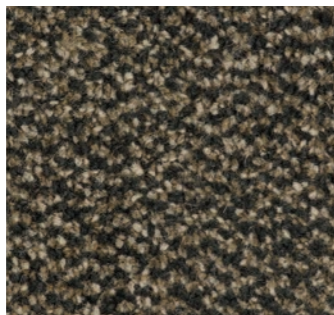
4230FR | New York black



4207FR | Panama blue



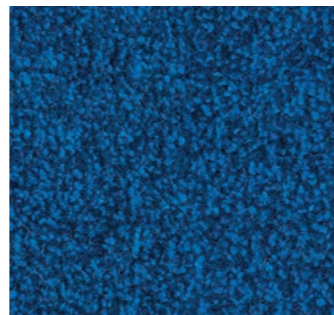
4223FR | Hong Kong red



4204FR | Santos brown



4226FR | Tangier brown



4222FR | Sydney blue

Technical specifications

CORAL MARINE FR

	Total thickness	ISO 1765	Approx. 9 mm
	Area of use		Heavy use
	Roll width		185 cm
	Roll length		Roll length approx 27.5 m (customisable)
	Colour fastness ratings:		
	Light	EN ISO 105/B02	> 5
	Rubbing	EN ISO 105/X12	4
	Water	EN ISO 105/E01	4-5
	Seawater	EN ISO 105/E02	4
	Shampoo	BS 1006	4-5
	Organic solvents	EN ISO 105/X05	5
	Construction		Tufted, 5/32" cut-pile
	Designs		Mottled
	Pile material		60% Wool / 40% polyamide
	Tuft base		Non-woven polyester
	Backing		FR latex
	Total weight	ISO 8543	Approx. 2550 gram/m ²
	Pile installation weight	ISO 8543	Approx. 1120 gram/m ²
	Pile thickness	ISO 1766	Approx. 6 mm
	Pile density	ISO 8543	0.141 gram/cm ³
	Number of tufts	ISO 1763	Approx. 96,400/m ²
	Impact noise reduction	EN ISO 717-2	Δ Lw = 31 dB
	Sound absorption	EN ISO 354:2003	f(Hz): 125 250 500 1000 2000 4000 αp: 0.05 0.05 0.1 0.3 0.55 0.6
	Slip resistance	EN 13893	DS
	Body voltage	ISO 6356	< 2.0 kV antistatic
	Thermal resistance	ISO 8302	0.125 m ² K/W
	Fire rating:*		
	IMO Resolution A653(16)		Pass
	IMO Resolution MSC 307(88) Annex 1 Parts 2 and 5		Pass
	US Coast Guard approval ref: 164.117EC0493		EC0493/17



*IMO tested and approved using 3mm steel subfloor and IMO certified Coral Fix, acrylic dispersion adhesive.

Final production might vary within commercial tolerances from sample. Manufacturing specifications subject to normal industry tolerances. Forbo reserves the right to improve the specification of its products without giving prior notice. Errors and omissions excepted.





flotex® vision FR

Flotex Vision FR is a unique, textile flocked floor covering, combining the cleaning properties and durability of a resilient flooring with the comfort, slip resistance and acoustic properties usually associated with textiles.

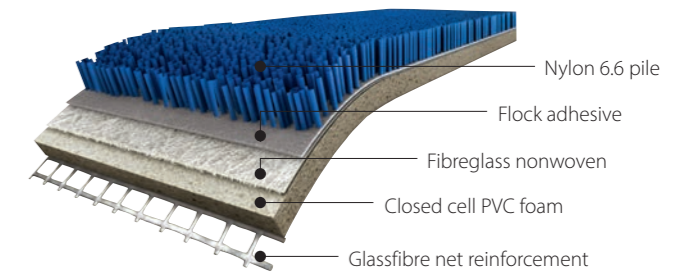
- **High definition print offers you complete freedom of design**
- **Bespoke design service**
- **Lightweight approximately 1225 gram/m²**
- **Easy to clean**
- **Impervious backing makes it suitable for wet cleaning**
- **Excellent acoustic properties up to 22 dB**
- **Smooth textile velour like surface that is comfortable and warm underfoot**
- **Slip resistance >0.30**
- **Durable construction: using Nylon 6.6**
- **Improved indoor air quality (independently proven by Allergy UK)**
- **Easy to repair any damaged areas**
- **Flotex is ortho-phthalate free**
- **Cut to size/shape option.**

Flotex Vision FR is extremely dimensionally stable and has a velour-like surface whilst being functional and extremely easy to clean.

Having been awarded the prestigious Allergy UK Seal of Approval™, Flotex Vision FR is proven to reduce allergens, improving indoor air quality for passengers.

Where IMO certified material is required, please ensure that 'FR' is clearly noted on all orders.

Flotex Vision FR construction



Flotex Vision FR is IMO tested and approved, and wheelmarked in accordance with the Maritime Equipment Directive (MED).



ERO2812/MED0364 Rev.1

164.117/1121/MER 0364

READY-MADE STYLE OR CUSTOM-CREATED BRILLIANCE?

As Flotex Vision FR flocked flooring has up to 80 million fibres per square metre, it provides a matt high-density substrate for printing, enabling vibrant designs and true to life visuals that can be produced in high level photographic resolution.



We can colour match to physical samples or to specific colour references such as NCS, RAL or Pantone.



Our bespoke design service offers limitless possibilities, enabling you to create something truly unique.



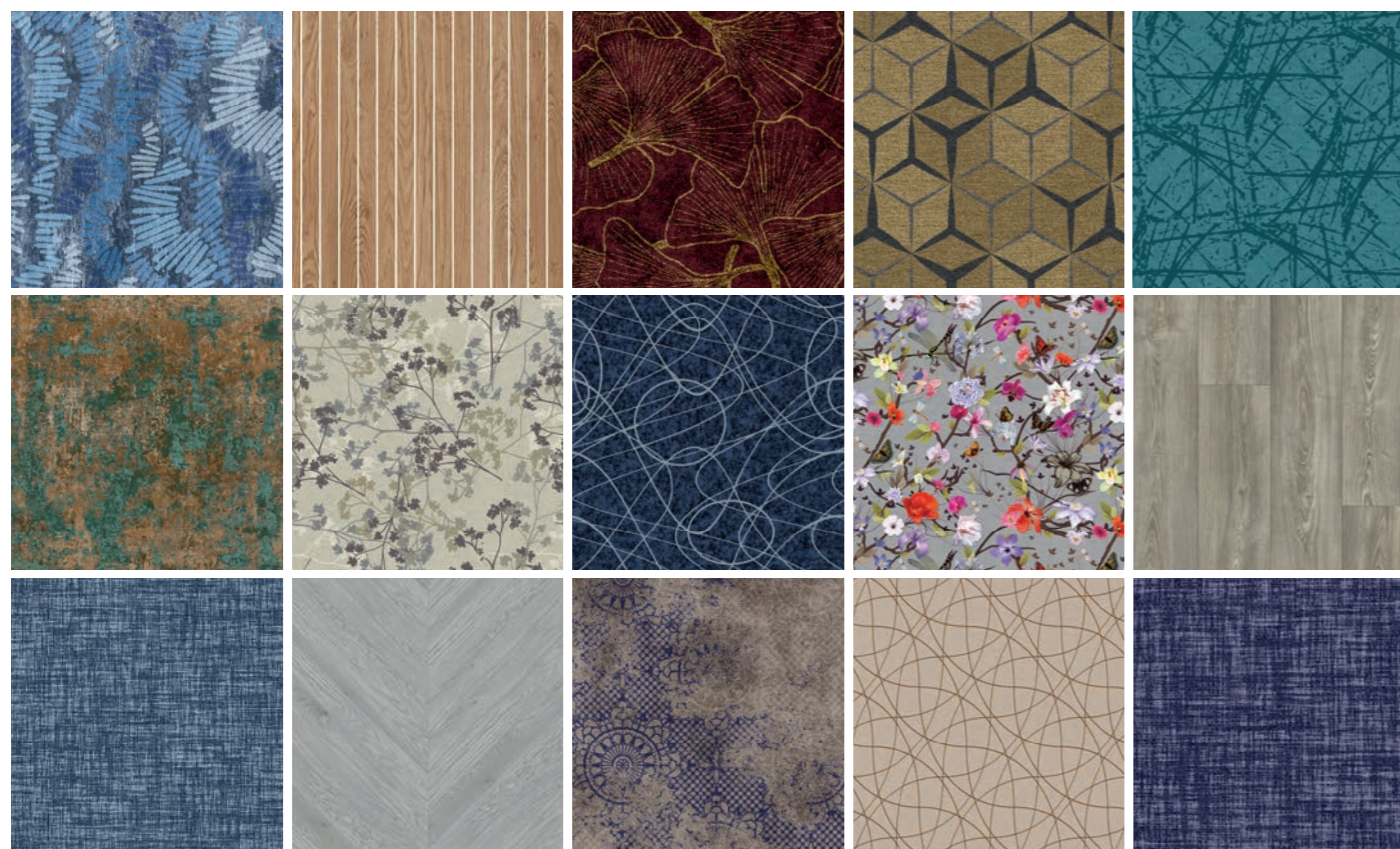
Browse and bring your vision to life with our curated collection of ready-made flooring patterns. offered to you in a flexible and always up-to-date digital library: www.forbo-flooring.com/marine-flotex-vision-fr



CUSTOM FLOORING



Scan the QR code to view the full collection



Flotex Vision FR | Natural bloom dune

WHY NOT CREATE A CUSTOM COLOURWAY OR A BESPOKE DESIGN

Create your own masterpiece using our custom design service alongside our high definition printing technology. Our experienced designers can help at any stage in the design process, depending on what involvement you require.

If you are looking for design ideas, re-colouration of existing designs or help with the development of a unique design that works perfectly with your marine interior design scheme, then we have the resource to help.



1

DESIGN BRIEF AND SAMPLES SENT IN VIA YOUR LOCAL FORBO REPRESENTATIVE.



2

FORBO DESIGN TEAM DEVELOP THE DESIGN.



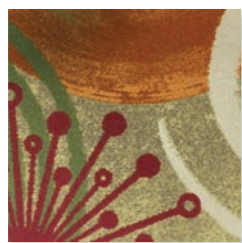
3

MATCHING ANY PANTONE/NCS/RAL OR MATERIAL SAMPLES SUPPLIED.



4

GRAPHIC DESIGN CREATED TO ENSURE THAT THE BRIEF IS FULFILLED.



5

PHYSICAL SAMPLE PRODUCED AND SENT FOR APPROVAL. DISPATCHED WITHIN 10 WORKING DAYS.



6

ONCE ALL APPROVED, THE ORDER CAN THEN BE PRODUCED.

Our experienced designers can help you at any stage of the design process, depending on the level of involvement you require. Whether you seek assistance in developing initial design concepts or refining digital visuals, **our team is dedicated to bringing your unique masterpiece to life.**



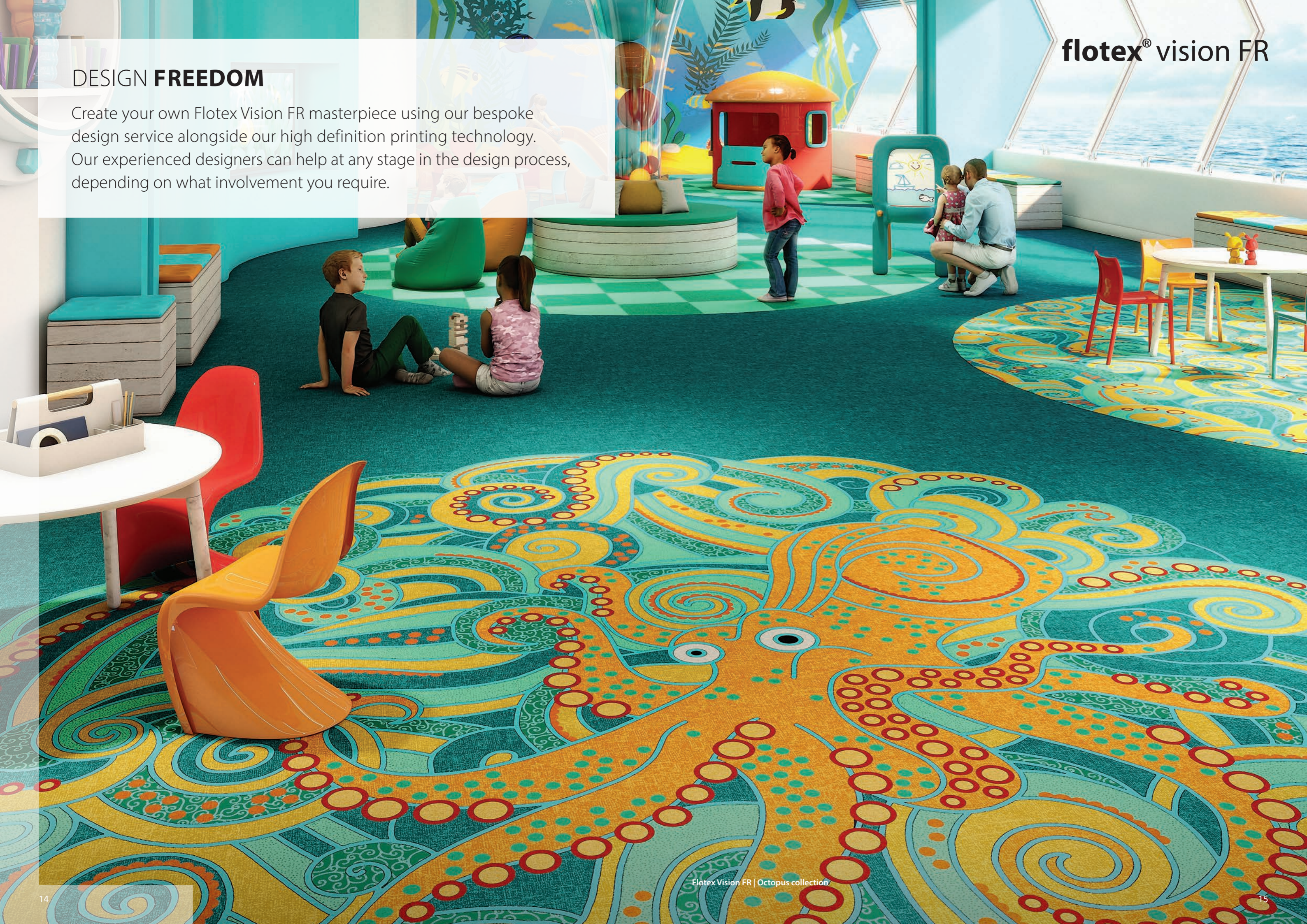
FLOTEX VISION FR OFFERS REAL DESIGN FREEDOM



Flotex Vision FR | Newport + anemone

DESIGN FREEDOM

Create your own Flotex Vision FR masterpiece using our bespoke design service alongside our high definition printing technology. Our experienced designers can help at any stage in the design process, depending on what involvement you require.



DESIGN **INSPIRATION**

Our high definition printing technology allows for large scale pattern repeats and vivid lifelike colours. This creates a new dimension for Flotex Vision FR and provides ultimate design flexibility for marine environments.

With over 500 existing references to choose from, plus the option to re-colour several designs, Flotex Vision FR is best viewed on our digital library (www.forbo-flooring.com/marine-flotex-vision-fr) for the latest up-to-date collections.



Flotex Vision FR | Elder border almond

DESIGNER COLLECTIONS

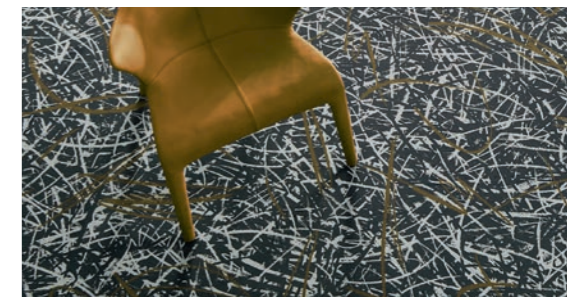
Forbo Flooring has been very privileged to team up with some amazing designers. Many have found inspiration from our advanced production methods which in many cases, allow high definition digital printing, enabling designers to achieve an exact translation of their design vision.



Flotex Tibor FR | Ziggurat aqua

flotex® BY STARCK®

Forbo Flooring Systems has collaborated with visionary creator Philippe Starck in designing a highly innovative collection of floor covering systems: Flotex BY STARCK.



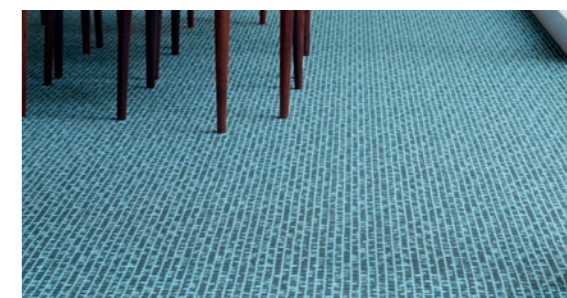
HEMINGWAYDESIGN X Forbo FLOORING SYSTEMS

The HemingwayDesign x Forbo flooring collaboration sees existing Forbo product re-imagined to create geometrically stimulating flooring with digitally printed Flotex.



flotex® tibor

Forbo Flooring Systems has teamed up with Tibor Ltd. to create a stunning collection of mid-century floor designs. Tibor Reich, the creator of Tibor, was a man ahead of his time. Although these striking patterns date from the 1950's, they could have been designed yesterday.



flotex® sottsass

This exclusive design collaboration between Forbo and Sottsass Association was borne out of the desire to work with an innovative flooring technology and its precision HD printing brings to life the avant-garde designs that clearly carry the Sottsass signature.



mbstudio

By bringing his works of art right under our feet, José Medina Galeote explores new perspectives on textures such as the warmth and comfort of Flotex flocced textile flooring.



Mac & Stone.

This collection is based on the idea of architectural modularity and the desire to organise the space around us in an architectural way. This is realised through the use of repetitive geometric forms, such as hexagons, trapezoids or braided structures which form the base of the collection.





Technical specifications

Flotex Vision FR meets the requirements of EN 1307

FLOTEX VISION FR

	Total thickness	ISO 1765	Approx. 3.3 mm
	Commercial use	EN ISO 10874	Class 33
	Roll width		2.0 m
	Roll length		± 30 m
	Castor chair continuous use	ISO 4918	R ≥ 2.4
Colour fastness ratings:			
	Light	EN ISO 105/B02	≥ 5
	Rubbing	EN ISO 105/X12	≥ 4
	Water	EN ISO 105/E01	≥ 4
	Pile material		100% polyamide 6.6
	Construction		Flocked textile floor covering
	Backing		Resilient waterproof backing
	Total weight	ISO 8543	1225 g/m ²
	Pile thickness	ISO 1766	Approx. 2 mm
	Pile installation weight	ISO 8543	Approx. 250 g/m ²
	Impact sound insulation	EN ISO 717-2	Δ L _w = ≥ 22 dB
	Dimension stability	ISO 2551	≤ 0.2%
	Flexibility	ISO 24344	No cracking (10 mm diameter Mandrel)
	Electrical resistance	ISO 10965	>10 ⁹ Ohms
	Comfort class	EN 1307	LC1

Flotex FR product meets the demands set by EN 14041

	Slip resistance	EN 13893	μ ≥ 0.30
	Body voltage	ISO 6356	≤ 2.0 kV

Fire rating:*

	IMO Resolution A653(16)	Pass
	IMO Resolution MSC 307(88) Annex 1 Parts 2 and 5	Pass
	US Coast Guard approval ref:	164.117 / ERO2812 / MED0364 Rev.1



Flotex Vision FR is made to order.

*IMO tested and approved using 3mm steel subfloor and IMO certified Eurocol 640, acrylic dispersion adhesive.

Final production might vary within commercial tolerances from sample. Manufacturing specifications subject to normal industry tolerances. Forbo reserves the right to improve the specification of its products without giving prior notice. Errors and omissions excepted.



INSTALLATION, CLEANING & MAINTENANCE, TECHNICAL SPECIFICATIONS



TECHNICAL SPECIFICATIONS

You can find our latest marine technical specifications for the full portfolio of floor coverings on our website: www.forbo-flooring.com/transport

Alternatively you can scan the QR code to view and download the marine technical specification guide.



Technical Specifications



INSTALLATION, CLEANING & MAINTENANCE GUIDES

You can find our latest marine specific installation, cleaning and maintenance guides for the full portfolio of floor coverings on our website: www.forbo-flooring.com/transport

Alternatively you can scan the QR codes to view and download the marine installation, cleaning and maintenance guide pdfs.



Installation guide



Cleaning & Maintenance guide

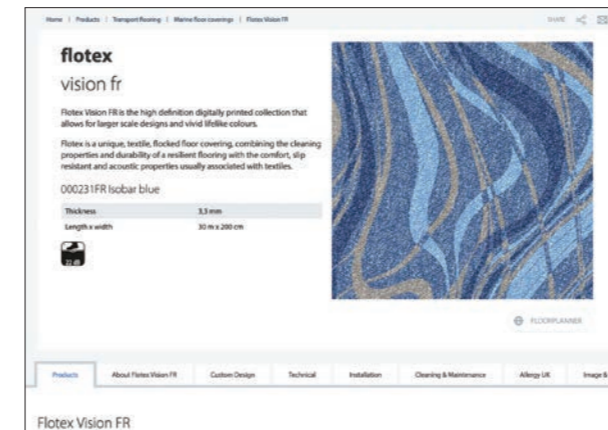
Any queries regarding installation or cleaning and maintenance guidelines for the marine portfolio of floor products please contact your local Key Account Manager or contact us:

Email: transport@forbo.com

Website: www.forbo-flooring.com/marine

Tel: +44 (0)1773 744121

FURTHER INFORMATION



Online services

Access Forbo Flooring Systems 24/7 to find inspiration and information by visiting www.forbo-flooring.com/marine. You can also follow the Forbo Transport page on LinkedIn for up-to-date product information, new projects, events happening and general industry news. Alternatively contact us by email at transport@forbo.com

in LinkedIn: [Forbo Flooring Transport](#)

TRANSPRESS

Subscribe online to our quarterly digital newsletter Transpress in order to be kept informed regards the latest transport product updates, company information, case studies as well as general industry news from Forbo Flooring Systems.

www.forbo-flooring.com/transpress



Sample service

To request a brochure, sample cards or specific sampling material, please send your request to transport@forbo.com. We aim to dispatch transport requests same day/next working day whenever possible.

For more information about any of the products or services offered by Forbo Flooring Systems, contact us on:

Email: transport@forbo.com

Website: www.forbo-flooring.com/marine

Tel: +44 (0)1773 744121

Forbo Flooring Systems is part of the Forbo Group, a global leader in flooring and movement systems, and offers a full range of flooring products for commercial and affordable housing and new build markets. High quality linoleum, vinyl, textile, flocked and entrance flooring products combine functionality, colour and design, offering total flooring solutions for any environment.



What to do now?

For more information about any of the products and services offered by Forbo Flooring Systems, to request samples/brochures or a visit then contact us:

Email: transport@forbo.com

Website: www.forbo-flooring.com/marine

Tel: **+44 (0)1773 744121**

Let us keep you up-to-date

 LinkedIn: **Forbo Flooring Transport**

UK & all other

Forbo Flooring UK Limited
High Holborn Road
Ripley
Derbyshire
DE5 3NT
UK
T: +44 (0) 1773 744121
E-mail: transport@forbo.com
www.forbo-flooring.com/marine

France

Forbo Sarlino SAS
63, rue Gosset
BP 62717
51055 Reims Cedex
France
T: +33 3 26 77 30 30
www.forbo-flooring.fr

Germany

Forbo Flooring GmbH
Steubenstraße 27
D-33100 Paderborn
Deutschland
T: +49 5251 1803-0
www.forbo-flooring.de

Spain

Forbo Pavimentos S.A.
Pasaje Bofill 13-15
E-08013 Barcelona
Spain
T: +34 932 090 793
www.forbo-flooring.es

USA

Forbo Flooring NA
Humboldt Industrial Park
8 Maplewood Drive
PO Box 667
Hazleton, PA 18202
USA
T: 1-800-842-7839
www.forboflooringna.com