



creating better environments

**forbo**  
FLOORING SYSTEMS



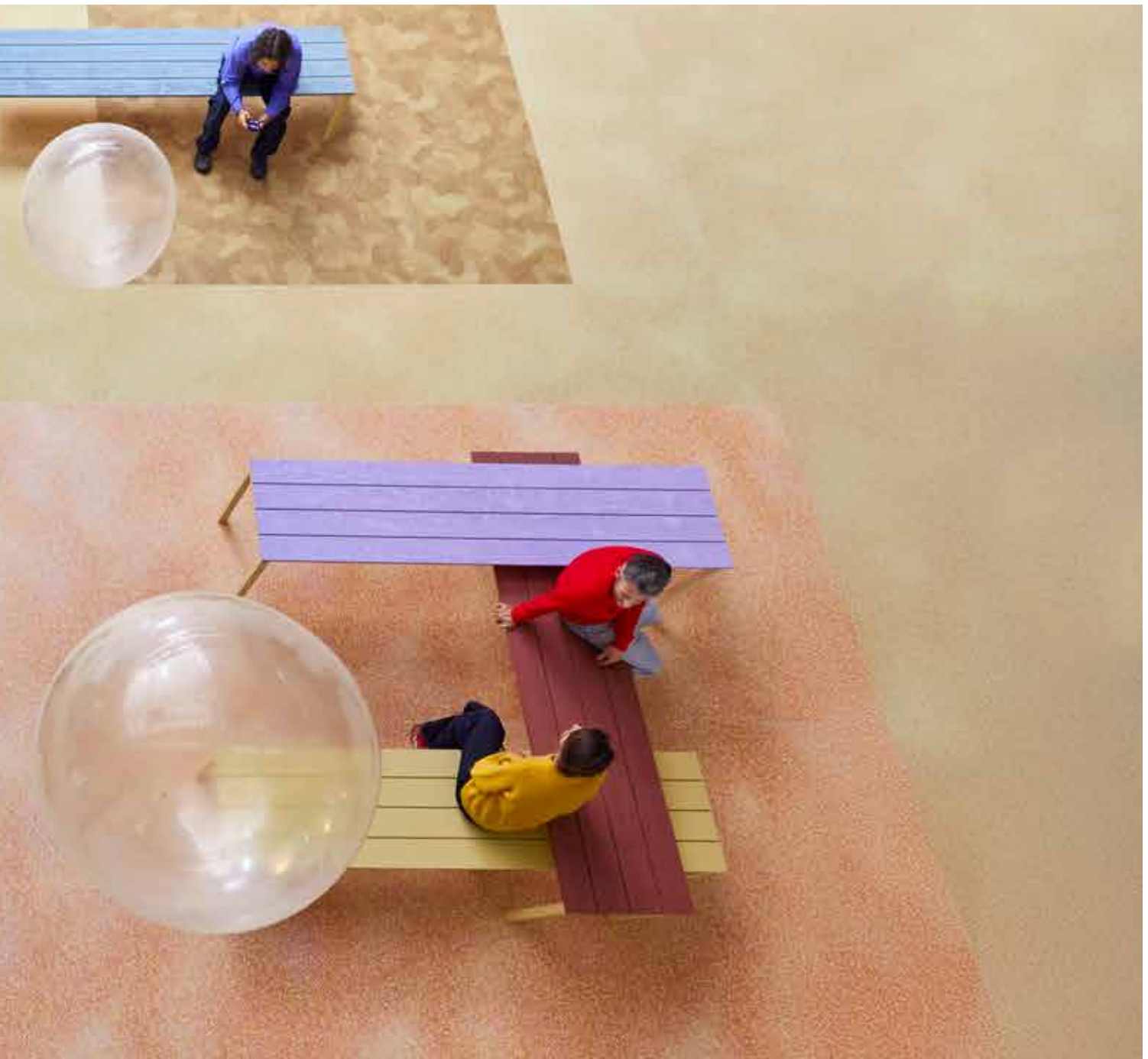
## EXPERTISE IN DESIGN AND FUNCTIONALITY

### **Modul'Up: Expertise and Innovation in Loose lay Flooring**

With a reputation built on years of innovation and confirmed by users worldwide, Modul'up offers the best-in-class solution for all flooring needs. Its unique adhesive-free installation process ensures minimal disruption, allowing operations to continue seamlessly—saving both time and costs while promoting sustainability through circular solutions.

#### **Modul'up loose lay offers two flooring options:**

- **19 dB Acoustic:** Featuring our advanced acoustic technology, this solution significantly reduces noise for optimal comfort with a high performance standard.
- **Compact:** Designed for high-traffic areas, offering enhanced durability and resilience when it's needed most.



## Sarlon: Expertise and Heritage in Acoustic Flooring

Experience the perfect combination of style and functionality with Sarlon acoustic flooring. Designed with advanced acoustic technology, Sarlon effectively reduces noise but with low indentation properties and cutting-edge XtremPUR™ surface protection, it withstands heavy foot traffic while maintaining a flawless, like-new appearance. Trust in a flooring solution that meets the highest standards of quality, durability, and performance.

### Sarlon offers two flooring options:

- **19 dB Acoustic:** High acoustic sound reduction with the best residual indentation for a 19 dB acoustic product.
- **15 dB Acoustic:** Lowest residual indentation for acoustic product, suitable for heavy loads combined with 15 dB acoustic performance for additional comfort.

# EXPERIENCE OUR **DESIGN EXPERTISE**

Our collections are crafted with meticulous care and attention to detail. These Modul'up and Sarlon ranges are thoughtfully designed for various segments, inspired by the latest interior design trends that effortlessly blend style and functionality, laying the groundwork for endless possibilities.

Our mood boards and photography capture the harmonious blend of patterns and textures within Modul'up and Sarlon, illustrating how effortlessly

they complement each other and seamlessly integrate with other Forbo collections. Whether you're leaning towards understated elegance or making a bold, extravagant statement, these designs inspire a sense of creativity and positivity.

Colour stories are central to the Modul'up and Sarlon collections. The palette embraces soft, warm tones, from soothing shades inspired by nature to rich, expressive hues that add depth and vibrancy.



98506 | terracotta shaped wood, 0846 | terracotta uni

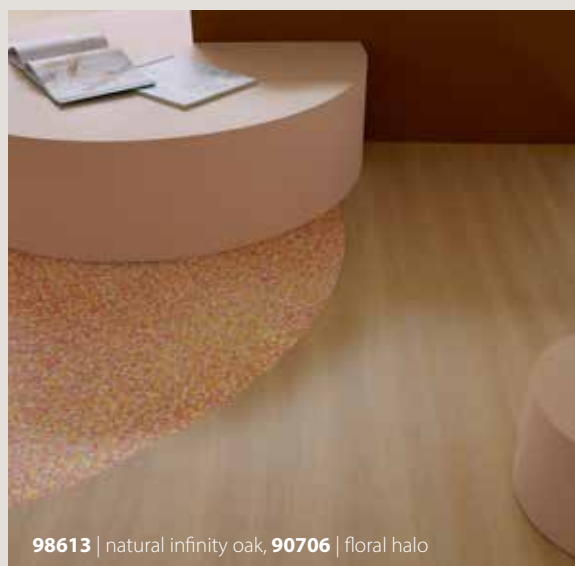


These colours are designed to be versatile, effortlessly creating environments that are calm and serene or lively and full of character. The design team draws from global colour trends to craft a collection that's full of possibilities, offering endless opportunities to combine within the range and within Forbo's diverse vinyl ranges.

Whether you're seeking a natural ambiance, a soft and welcoming atmosphere, or a bold, extravagant statement, Modul'up and Sarlon strike the perfect balance whether your requirements are for acoustic, compact or loose lay installation. Each design is intentionally created to harmonize easily with other materials and finishes, fostering creativity while maintaining a cohesive aesthetic. With an emphasis on nature, lightness, and positivity, these designs invite you to explore creative freedom and open up a world of endless possibilities.



90706 | floral halo



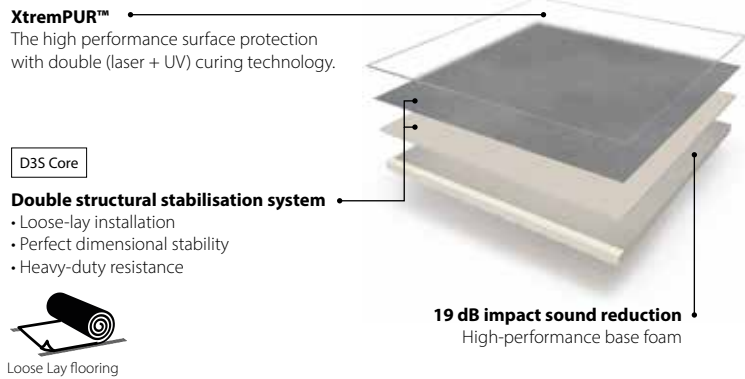
98613 | natural infinity oak, 90706 | floral halo



98503 | natural shaped wood

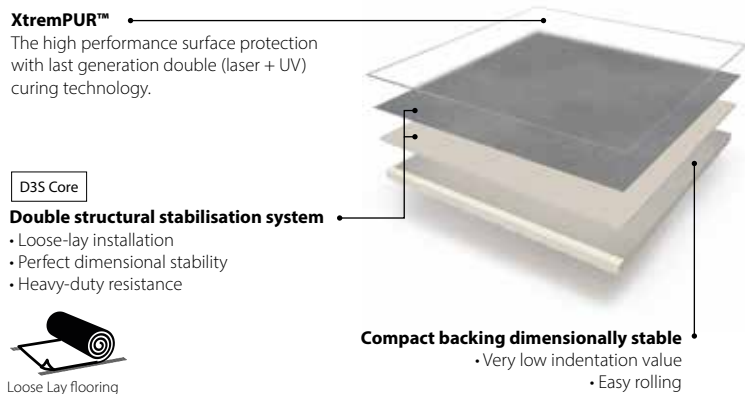
## Modul'up 19 dB

The best **fully loose laid** acoustic sheet solution. Quick installation (no downtime), immediate use possible. Long term benefit of very quick replacement and removal, saving money over time. Offering all benefits of the **best performing acoustic** with less overall material.



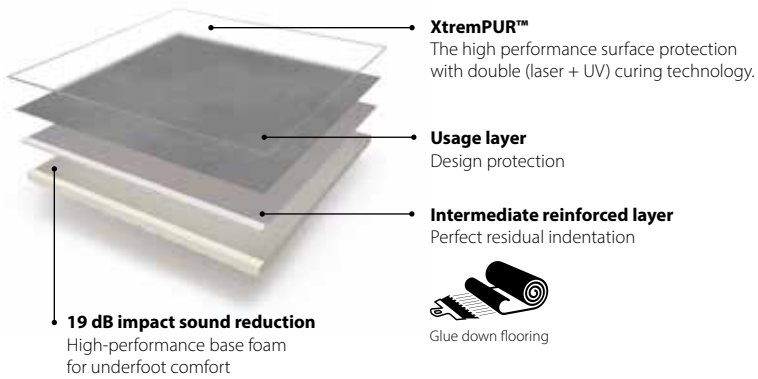
## Modul'up compact

The best **fully loose laid** compact sheet solution. Speed of installation and renewal reduces downtime and is immediately **ready for use** after installation. Compact and strong **solution for heavy traffic** and intense use. Possibility to use over existing flooring, no need to remove on many occasions.



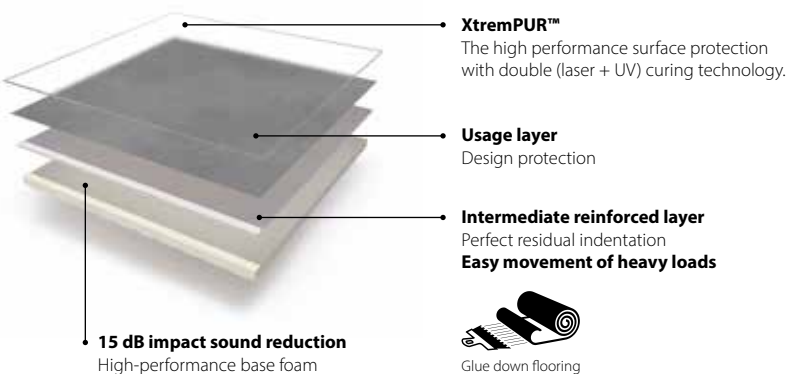


90706 | floral halo



## Sarlon 19 dB

The best acoustic **high traffic** product in the market. Highest acoustic sound reduction of 19 dB. **Best residual indentation** for a 19 dB acoustic product. High performance characteristics in all other areas.



## Sarlon 15 dB

The best compromise on acoustic and high load requirements. **Low residual indentation**, suitable for heavy loads. 15 dB acoustic performance for additional comfort at **high performance**. A **unique** product proposition in the market.

# UNMATCHED **SOUND REDUCTION** FOR ENHANCED COMFORT

When it comes to creating a peaceful and comfortable environment, sound reduction can play a crucial role. Our flooring solutions are designed to address two types of disruptive noise: in-room impact sound and transmitted impact sound.

## **In-Room impact sound**

This is the noise generated within the same room, such as footsteps or moving furniture. Modul'up and Sarlon are Class A rated, the highest possible classification for sound reduction, ensuring a calmer, quieter space that enhances well-being and productivity.

## **Transmitted impact sound**

This is the sound that travels through the floor from one level to the level below, often a concern in multi-level buildings. Our 19 dB-rated flooring delivers the best possible reduction of impact noise, as tested and proven by the EN ISO 717-2 standard. By minimizing the sound transmission, our flooring creates a quieter and more comfortable environment for the floors below.

## **Why choose our flooring?**

- Class A sound reduction: Highest possible rating for reducing in-room impact sound on all products.
- 19 dB Impact sound reduction in Modul'up and Sarlon: Tested and proven to minimize noise transmission between floors.
- Enhanced well-being: As a result more peaceful living and working environments created by our solutions.

With these superior sound reduction features, Modul'up and Sarlon are at the forefront of innovation, combining acoustic comfort with excellent performance for a variety of spaces.



98714 | golden industrial parquet



# SUPERIOR INDENTATION PERFORMANCE FOR LASTING BEAUTY

Floors are subjected to constant pressure, and maintaining their appearance over time requires exceptional strength. Indentation under heavy or continuous loads can detract from the aesthetics and functionality of a space. Our flooring solutions are engineered to deliver unmatched indentation resistance, for both compact and acoustic products, ensuring long-lasting performance without compromise.

## Acoustic performance and indentation resistance

For projects where sound reduction is a priority, our 19 dB solutions provide excellent acoustic properties while offering best-in-class residual indentation. This ensures the floor remains both quiet and visually appealing, even in high-traffic areas.

## Acoustic performance and heavy loads

In spaces where sound reduction is needed, but the floor must also withstand heavy or rolling loads, our Sarlon 15 dB solution delivers the perfect balance. You get reliable acoustic performance alongside enhanced resistance to indentation.

## Compact solutions for maximum resistance

For areas where continuous or acute high pressure is applied -e.g. as from table legs or heavy furniture- Modul'up Compact is recommended. It provides the highest resistance to residual indentation, ensuring your floor stays unmarked.

## XtremPUR™ surface protection

The ultimate protection for Sarlon and Modul'up! The high performance surface protection with double (laser + UV) curing technology developed and proven for a care free future:

- **Stain resistant:** The XtremPUR™ lacquer offers the best possible resistance against stains. Ideal for, for instance for the healthcare segment where potential chemical spillages may cause stains.
- **Easy to clean:** XtremPUR™ creates a 3D surface protection acting as a true shield against soiling. Easy to clean and needs no wax or polish.
- **Durable and longlasting:** Tested and installed in the most intensive and aggressive conditions. XtremPUR™ surface protection shows excellent performance against scuffs and scratches.
- **Matt surface:** XtremPUR™ improves the realism of the visual of the flooring with a less glossy appearance.



8723 | weathered narrow oak

# FAST FLOORING



Quick, easy and economical. FastFlooring is Forbo's overarching name for genuinely adhesive free floor coverings including entrance flooring and interior flooring ranges in sheet, tile and plank format for maximum flexibility. Our Modul'up is one of our first ranges that completely complies to this category and stands at the forefront of Forbo Fast Flooring.

## THE ADVANTAGES OF FAST FLOORING AT A GLANCE:

**Quick:** Modul'up can be fitted over different types of existing flooring and as they doesn't need to be installed with adhesive, they can reduce installation time by up to 50%

**Easy:** no adhesive required and really easy to install. There are no adhesive odours, less disruption and dust, and floors can be walked on immediately after installation.

**Economical:** a reduction in downtime will mean substantial savings for the user of the building including a potential saving on installation costs.

The savings are even greater when an existing Fast Flooring product like Modul'up is replaced with another Fast Flooring product: the existing product comes off the floor quickly and easily with no damage to the subfloor and is ready for circular use.

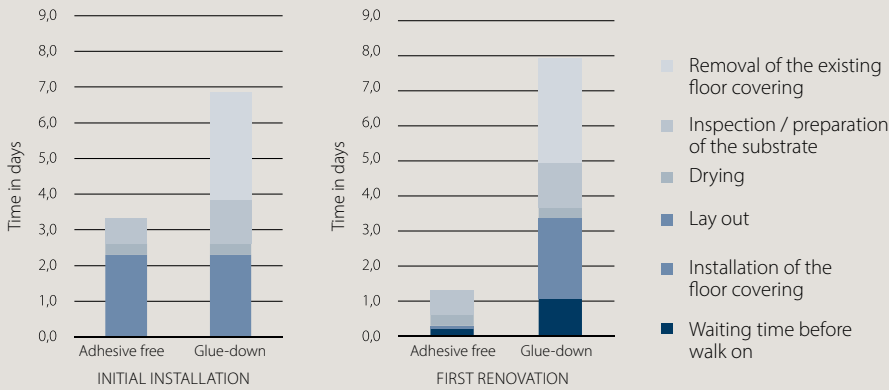


### NEW BUILD

- Shorter installation times
- Reduced maintenance and service costs
- Same supplied & fitted price as a glue-down floor covering (initial installation)

### RENOVATION

- Installation while premises are in use without any disruption (noise, dust, adhesive odours etc.)
- Instantly ready for use after installation
- Possibility of covering most existing compact floors and acoustic vinyl (with Modul'up compact)



## MODUL'UP ADHESIVE FREE FLOORS, THE ADVANTAGES



### NEW BUILD



▶ Endless colour palette



▶ Quick installation, immediate use, saving money and time



▶ Lay flat, stay flat technology. No movement of floor.



▶ Superior performance



Loose Lay Flooring



### RENOVATION



▶ Endless colour palette



▶ In most case no subfloor preparation necessary

▶ Quick installation and no downtime, saving money and time

▶ Future replacement like for like, more time saving and circular opportunities



Loose Lay Flooring





8703 | natural narrow oak, 90758 | citrus halo contour

# modul'up®

## ADHESIVE FREE - COMMITTED TO THE FUTURE

Modul'up is the leading innovation choice for high-traffic environments, offering a premium loose lay floor covering that combines speed, efficiency, and sustainability. With no need for adhesives, it not only installs faster but is also more cost-effective when it's time for replacement. Trusted worldwide, with millions of square meters installed, Modul'up's adhesive-free concept has proven its reliability in the most demanding applications.

- **Quick Installation, no Adhesives:** Modul'up can be installed in half the time of standard glued-down floors, reducing disruption and eliminating adhesive odors. It's ready to walk on immediately after installation, perfect for busy environments.
- **Sustainable and Reusable:** The adhesive-free installation method means Modul'up is easily removable and reusable, making it a smart choice for projects focused on sustainability.
- **Acoustic & Compact Versions:** Available in both an acoustic (19 dB) version for sound reduction and a compact version for spaces requiring maximum durability. Both come with XtremPUR™ protection, enhancing wear resistance and longevity.
- **Cost Savings:** By minimizing subfloor preparation, Modul'up can save up to 20% in installation costs compared to traditional glued-down products, with no compromise on performance.
- **Reduced risk:** Loose lay installation reduces the risk for a bad adhesive reaction when installed on a new concrete subfloor that is not fully dried. With millions of m<sup>2</sup> installed the performance of Modul'up is proven and can be trusted.
- **Endless Design Possibilities:** With over 80 items available in both the acoustic and compact ranges, Modul'up offers unmatched versatility for a wide variety of applications. From commercial offices to educational institutions and healthcare environments, it delivers solutions tailored to every need.

Whether you're designing for today or planning for the future, Modul'up is the flooring solution that offers reliability, flexibility, and performance you can count on.

### Modul'up 19 dB

- The adhesive free acoustic sheet solution with proven 19 dB acoustic rating
- Rapid installation with minimal downtime and disturbance, it can be walked on immediately after use
- Long term benefit of very quick removal, replacement and end of life recycling or reuse
- As part of Forbo's Fast Flooring collection, Modul'up can reduce downtime by over 50% compared to standard, glued down products

### Modul'up compact

- The adhesive free compact solution
- Speed of installation and renewal reduces downtime and is immediately ready for use after installation.
- High performance for heavy traffic and intense use, including where rolling loads may be part of everyday use
- Can be installed over existing flooring in many instances, including acoustic vinyl, removing the need for expensive and time-consuming subfloor preparation

# sarlon® 19 dB

## THE ACOUSTIC SOLUTION

Sarlon has a long history of being the best acoustic product on the market. The 19 dB acoustic performance and comfort, in combination with the best residual indentation has given this product the leading acoustic position over years. This will not change.

The performance is further enhanced through its of XtremPUR™ lacquer which brings many additional benefits in the use of this product.

The beauty of the over 80 options in colour and design will remain beautiful throughout the life time of the product.

It can be used in any project where acoustic and heavy traffic needs to be combined.



### Its acoustic efficiency complies with the regulations

The highest acoustic and best indentation performance in the category.

Impact sound reduction



In room sound reduction Class A



Indentation performance



Heavy traffic



Sarlon 19 dB is the most comfortable and easy to use solution for high traffic areas.

# sarlon® 15 dB

## THE HYBRID SOLUTION WITHOUT COMPROMISE

Sarlon is offering an unique product proposition in the market. Particularly for very demanding circumstances with heavy loads and intense traffic this product combines very good acoustic properties in combination with performance characteristics that are normally expected from a compact product. A true compact acoustic product.

The full range of over 80 items is available in this one of a kind solution that is finding its way successfully already for many years into a wide variety of demanding projects. The wide choice of designs and colours makes it suitable for many dynamic environments.

The XtremPUR™ lacquer protection will ensure a high quality performance with easy maintenance for many years of use.



8723 | weathered narrow oak

**Offering excellent residual indentation performance for an acoustic floor covering and perfect for high traffic environments**

**Impact sound reduction**



**Indentation performance**



**Heavy wheeled loads**



**Heavy traffic**



≤ 0.10 mm Requirement  
for compact flooring  
NF EN ISO 24343-1

Sarlon 15 dB is the acoustic solution for areas where the highest indentation performance and easy rolling are key.



1. Product development and design



2. Sourcing and raw materials

**THE THEMES WE NEED TO GO AROUND TO MEET OUR AMBITION**



5. Recycling & end of life



3. Production & distribution



4. Long lasting & easy to maintain



# THE PILLARS OF OUR AMBITION

At Forbo Flooring Systems it is action that is important, not just promises. We want to be a trusted partner who provides full transparency, for example when it comes to circular flooring solutions. It is about the things we do, not just about the things we promise. We do this based on 3 pillars:

## Transparency, circularity and renewability

To meet the challenges of today's and tomorrow's requirements we develop and perform on 5 themes

### **PRODUCT DEVELOPMENT AND DESIGN (PRODUCT DEVELOPMENT WITH CIRCULARITY AND USERS IN MIND)**

- Modul'up is the best easy to install and remove sheet product, enabling a smooth recycling process. Modul'up is fit for more than one lifetime
- Sarlon is proven to be the best acoustic solution in the market, fit for purpose in demanding environments with a long potential lifetime
- Fully transparent choices by using the EPD's which are 3rd party verified, using only 100% safe and traceable REACH compliant materials

### **SOURCING AND RAW MATERIALS (MAXIMIZING THE USE OF SUSTAINABLE AND RENEWABLE RAW MATERIALS)**

- Maximized use of recycled content in all products, Modul'up and Sarlon contain up to 20% recycled content and actual content is published in our EPD's
- Controlled supply chain certification - ISO 14001 and 9001 standards and SA8000 for ethical supply chain
- All our raw materials meet the strictest health requirements. Modul'Up and Sarlon are 100% phthalate free

### **PRODUCTION AND DISTRIBUTION (CARBON NEUTRAL AND ZERO WASTE PRODUCTION)**

- Modul'up and Sarlon production is dedicated to the concept of zero waste. 100% of production waste is reused inside Forbo Flooring
- Modul'up and Sarlon are produced in an environment where substantial reductions of CO<sub>2</sub> has been achieved and additional improvements are planned

### **LONG LASTING & EASY TO MAINTAIN (HIGHLY DURABLE AND FIT-FOR-PURPOSE SOLUTIONS)**

- Loose lay installation of Modul'up saves time, installation waste, money and the environment
- Forbo Flooring offers compatible Coral entrance flooring to keep Modul'up and Sarlon cleaner for longer and reduce cleaning cost by up to 65%
- Thanks to its hard-wearing properties and durability benefits, strengthened even further with our exclusive XtremPUR™ lacquer, Modul'up and Sarlon flooring have a product lifetime that surpasses that of ordinary vinyl flooring

### **RECYCLING AND END-OF-LIFE (RECREATING VALUE AT THE END)**

- Back to the floor projects – returned floors can be recycled to close the materials loop
- The loose lay Modul'up flooring can be reused in its entirety and is as such 100% circular ready

# THE DYNAMICS OF A BUILDING

There is an increase in demand for transitional environments; spaces need to be able to evolve and adapt to new functions. These constantly changing spaces require walls and floors that can perform as a chameleon, with timeless colours and basic materials. The trends and changing mindsets inspired the Forbo Design team to analyse the different dynamics taking place within a building. Five themes were identified; **receiving, moving, connecting, concentrating and recharging**, with each one referring to the different identities a space can have. They express a certain state of a person or an activity taking place within the building.



91651 | grey travertine, 0863 | beige grey uni



4771 | silver concrete, 90909 | grey mimetico

## RECEIVING

The theme 'receiving' describes the scenario of a person entering a building; making a transition from the outdoors to the indoors. A space where one should feel welcome and is accessible and transparent as first impressions are key. This is the area of the building that should clearly represent the 'feel' of the brand and meet the expectations of the client to make them feel comfortable and at home.

## MOVING

'Moving' represents the action towards the destination and the purpose of why someone is in a building. Orientation is priority, so these areas need to be clear to read and offer guidance even when one is stressed. The space needs to be legible and aid with wayfinding

## CONNECTING

The dynamics of a 'connecting' space signifies areas where you will connect with other people within a building, such as open public spaces for spontaneous interactions or semi open spaces for dialogues or brainstorming. These areas allow for an extrovert energy boost or to give the brain time out.

## CONCENTRATING

For 'concentrating', the attention is on the individual and avoiding unwelcome distractions. These are secluded spaces for privacy and focus, and while concentrating, people need a muted ambiance. Therefore, colour palettes in this area of a building should be subtle and quiet.

## RECHARGING

'Recharging' is connected to mindfulness and describes relaxed environments where people can let down their guard and be themselves. This area of the building should reflect a home-like setting, to allow people to refresh and recharge. Light and fresh shades should be used here, encouraging people to take a break, breathe and escape.

# HOW CAN WE HELP YOU?

We have given you all the benefits as to why a Modul'up and Sarlon floor is the best solution for your project. We are happy to help you specify this further. Use our various tools or contact us directly.

## More information about Modul'up and Sarlon

Read the full Modul'up and Sarlon story on our website. [www.forbo-flooring.com/modulupandsarlon](http://www.forbo-flooring.com/modulupandsarlon)

## Floor visualizer

Would you like to visualize the floor you have in mind in a specific room or even your own project? Please go to our floor visualizer and play around with designs and images.

[www.forbo-flooring.com/floorvisualizer](http://www.forbo-flooring.com/floorvisualizer)

## Sample service

Would you like to receive a sample, please go to our website or contact our local customer service.

## Installation, cleaning & maintenance

On our website you will find videos, PDF downloads and more to help you find the best way to install Modul'up and Sarlon or to learn how you clean and maintain your floor. Our technical teams are just a phonecall away should you still have questions.

[www.forbo-flooring.com/modulupsarlondownloads](http://www.forbo-flooring.com/modulupsarlondownloads)

## Inspiration & references

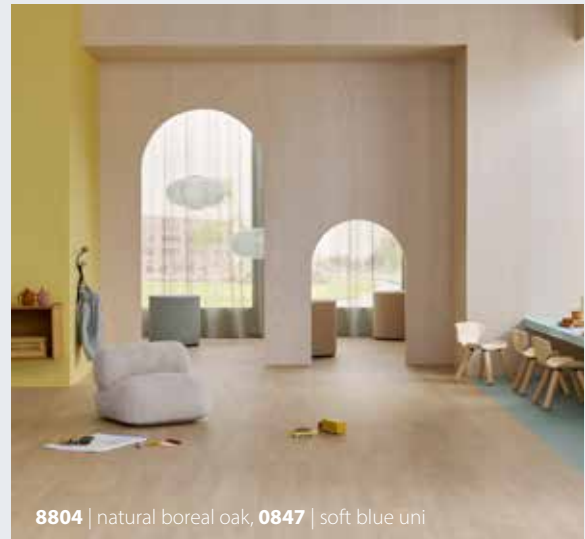
Would you like to see how others apply Modul'up and Sarlon, then please have a look at the 'Inspiration & references' part of our website.

[www.forbo-flooring.com/references](http://www.forbo-flooring.com/references)

## BIM files

Should you want to integrate the floors in your own technical drawings we have BIM data for all floors for you available.

[www.forbo-flooring.com/BIM](http://www.forbo-flooring.com/BIM)



8804 | natural boreal oak, 0847 | soft blue uni

## Protect your floor

One of the recommended elements to keep your floor for longer is the use of a good entrance system, such as our Coral and Nuway barrier matting solutions.

[www.forbo-flooring.com/entranceflooring](http://www.forbo-flooring.com/entranceflooring)



90401 | grey mini terrazzo, 90752 | grey halo contour

## Contact

Should you have remaining questions, please don't hesitate to contact us via;

[www.forbo-flooring.com/contact](http://www.forbo-flooring.com/contact) or send an email to [question@forbo.com](mailto:question@forbo.com)

# INSTALLATION AND COMPLEMENTARY PRODUCTS

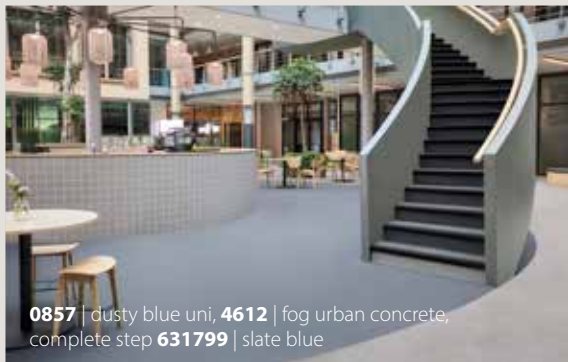
## Modul'up single-sided tape

Modul'up tape is part of the Modul'up system. To get all the benefits of a complete adhesive free installation, Forbo Flooring recommends the use of the Modul'up tape.



## Welding

Matching welding rods have been developed for all items in this collection. With certain designs and in certain projects an invisible weld gives the best visual effect, we offer the alternative use of our Forbo coldweld for these occasions.



0857 | dusty blue uni, 4612 | fog urban concrete, complete step 631799 | slate blue

## Sarlon Complete Step

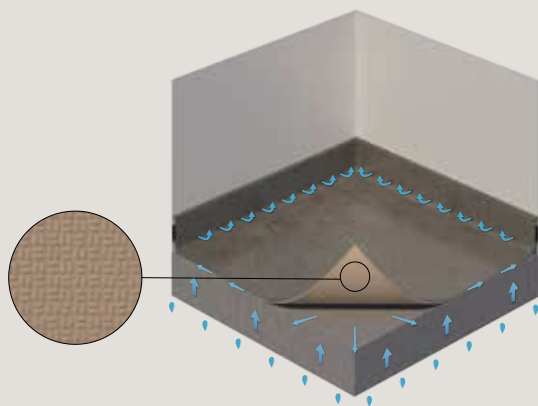
An acoustic PVC floor covering that is specially made for installation on staircases. Thanks to the foam backing, Sarlon Complete Step ensures a good sound insulation of 17 dB. The stair nosing is integrated in the structure and has a different colour allowing a visible contrast. The colour palette can be combined with Modul'up and Sarlon but also Eternal and Step flooring.



Coral Classic 4730 | raven black

## Entrance Flooring

Entrance flooring is fundamental to modern building design. A well designed entrance flooring system will prevent dirt and moisture from being tracked in and thereby prolongs the life of interior flooring, reduces cleaning & maintenance costs and the potential for slip injuries. With both textile (Coral) and rigid (Nuway) Entrance Systems in our portfolio, we can offer an entrance solution for every situation.



## Modul'up TE

The solution for damp sub floors. Installation of flooring on damp sub floors is a general issue in the market. Current solutions mostly contain a combination of products requiring a long, complex and costly installation process. Modul'up TE is an easy, economic and hassle-free solution for installation on damp subfloors. It can be installed in heavy traffic areas and it offers the benefits of loose lay installation.

# Technical specifications

Modul'up Compact meet the requirements of EN 10582

Modul'up 19 dB, Sarlon 19 dB and Sarlon 15 dB meet the requirements of EN 651 and ISO 11638

		Modul'up 19 dB	Modul'up Compact	Sarlon 19 dB	Sarlon 15 dB	
	Total thickness	EN ISO 24346	3.45 mm	2.0 mm	3.4 mm	2.6 mm
	Wear layer thickness	EN ISO 24340	0.70 mm	0.70 mm	0.70 mm	0.70 mm
	Commercial use	EN ISO 10874	34	34	34	34
	Industrial use	EN ISO 10874	42	43	42	42
	Packaging		Rolls	Rolls	Rolls	Rolls
	Roll length	EN ISO 24341	25 ml	25 ml	25 ml	25 ml
	Roll width	EN ISO 24341	2 m	2 m	2 m	2 m
	Total weight	EN ISO 23997	2.830 g/m <sup>2</sup>	2.600 g/m <sup>2</sup>	2.900 g/m <sup>2</sup>	2.700 g/m <sup>2</sup>
	Impact sound reduction	EN ISO 717-2	ΔLw = 19 dB	n.a.	ΔLw = 19 dB	ΔLw = 15 dB
	In-room impact noise	NF S 31-074	Ln,e,w < 65 dB, Class A	Ln,e,w < 75 dB, Class B	Ln,e,w < 65 dB, Class A	Ln,e,w < 65 dB, Class A
	Sound absorption	EN ISO 354 EN ISO 11654	α <sub>w</sub> = ± 0.05	α <sub>w</sub> = ± 0.05	α <sub>w</sub> = ± 0.05	α <sub>w</sub> = ± 0.05
	Residual indentation typical value Requirement	EN ISO 24343-1	0.08 mm ≤ 0.20 mm	0.02 mm ≤ 0.10 mm	0.08 mm ≤ 0.20 mm	0.05 mm ≤ 0.20 mm
	Slip resistance	DIN 51130	R10	R10	R10	R10
	Abrasion resistance	EN 660-2	T	T	T	T
	Castor chair resistance	ISO 4918	Yes	Yes	Yes	Yes
	Furniture leg resistance	EN ISO 16581	compliant	compliant	compliant	compliant
	Dimensional stability	EN ISO 23999	≤ 0.10 %	≤ 0.10 %	≤ 0.10 %	≤ 0.10 %
	Colour fastness to light Requirement	EN ISO 105-B02	7 ≥ 6	7 ≥ 6	7 ≥ 6	7 ≥ 6
	Stain resistance	EN ISO 26987	Excellent	Excellent	Excellent	Excellent
	Surface treatment		XtremPUR™	XtremPUR™	XtremPUR™	XtremPUR™
	Emissions into air : TVOC* at 28 days	EN 16516	≤ 0.01 mg/m <sup>3</sup>	≤ 0.01 mg/m <sup>3</sup>	≤ 0.01 mg/m <sup>3</sup>	≤ 0.01 mg/m <sup>3</sup>
	REACH (European regulation)	1907/2006/CE	compliant <sup>(1)</sup>	compliant <sup>(1)</sup>	compliant <sup>(1)</sup>	compliant <sup>(1)</sup>
	Compliance EN 14041		0200859-DOP-010	0200862-DOP-010	0200859-DOP-010	0200860-DOP-010
	Reaction to fire	EN 13501-1	B <sub>fl</sub> - s1, L, NCS	B <sub>fl</sub> - s1, L, NCS	B <sub>fl</sub> - s1, L, NCS	B <sub>fl</sub> - s1, L, NCS
	Slip resistance	EN 13893	μ ≥ 0.30	μ ≥ 0.30	μ ≥ 0.30	μ ≥ 0.30
	Body voltage	EN 1815	≤ 2 kV	≤ 2 kV	≤ 2 kV	≤ 2 kV
	Thermal conductivity <sup>(2)</sup>	EN 12524 (EN ISO 10456)	0.25 W/(m.K)	0.25 W/(m.K)	0.25 W/(m.K)	0.25 W/(m.K)

<sup>(1)</sup> The articles (products) do not contain substances of the candidate list published by ECHA (SVHC substances of very high concern) to be declared in accordance with REACH.

<sup>(2)</sup> The products are suitable for underfloor heating.

\*TVOC : total volatile organic compounds

All Forbo Flooring Systems' sales organisations worldwide have a certified Quality Management System in accordance with ISO 9001.

All Forbo Flooring Systems' manufacturing operations have a certified Environmental Management System in accordance with ISO 14001.

The Life Cycle Assessment (LCA) of Forbo Flooring Systems' products is documented in individual Environmental Product Declarations (EPDs) which can be found on all of our websites.



# collection overview with NCS | LRV

Available in

Colour n°	Colour	Modul'up 19 dB	Modul'up compact	Sarlon 19 dB	Sarlon 15 dB	installation direction	Pattern repeat	Planks size	NCS	LRV
0843	clay uni	x	x	x	x	same direction	--	--	S 2005-Y20R	47%
0845	corn uni	x	x	x	x	same direction	--	--	S 1030-Y	60%
0846	terracotta uni	x	x	x	x	same direction	--	--	S 3030-Y50R	29%
0847	soft blue uni	x	x	x	x	same direction	--	--	S 3010-B30G	36%
0848	sea green uni	x	x	x	x	same direction	--	--	S 3020-B70G	32%
0856	sienna uni	x	x	x	x	same direction	--	--	S 4030-Y80R	17%
0857	dusty blue uni	x	x	x	x	same direction	--	--	S 5010-R90B	19%
0858	artichoke uni	x	x	x	x	same direction	--	--	S 4010-G70Y	28%
0861	light grey uni	x	x	x	x	same direction	--	--	S 3000-N	41%
0862	stone grey uni	x	x	x	x	same direction	--	--	S 4502-Y	27%
0863	beige grey uni	x	x	x	x	same direction	--	--	S 3005-Y20R	39%
0869	charcoal uni	x	x	x	x	same direction	--	--	S 6502-Y	13%
3801	pearl christal	x	x	x	x	same direction	--	--	S 3000-N	41%
3803	eggshell christal	x	x	x	x	same direction	--	--	S 1005-Y10R	66%
3811	grey beige christal	x	x	x	x	same direction	--	--	S 3005-Y20R	47%
3812	light grey christal	x	x	x	x	same direction	--	--	S 4502-Y	29%
3819	medium grey christal	x	x	x	x	same direction	--	--	S 6502-Y	18%
4200	ivory canyon	x	x	x	x	same direction	100 x 100 cm	--	S 2002-Y	50%
4209	medium grey canyon	x	x	x	x	same direction	100 x 100 cm	--	S 6000-N	19%
4211	light grey canyon	x	x	x	x	same direction	100 x 100 cm	--	S 3502-Y	34%
4212	grey canyon	x	x	x	x	same direction	100 x 100 cm	--	S 4502-B	27%
4570	chalk cement	x	x	x	x	same direction	200 x 100 cm	--	S 2502-Y	49%
4572	medium grey cement	x	x	x	x	same direction	200 x 100 cm	--	S 5000-N	26%
4573	clay cement	x	x	x	x	same direction	200 x 100 cm	--	S 3005-Y20R	41%
4579	slate cement	x	x	x	x	same direction	200 x 100 cm	--	S 6500-N	15%
4601	cloud urban concrete	x	x	x	x	same direction	200 x 100 cm	--	S 2502-Y	49%
4602	pebble urban concrete	x	x	x	x	same direction	200 x 100 cm	--	S 3502-Y	32%
4603	seashell urban concrete	x	x	x	x	same direction	200 x 100 cm	--	S 2005-Y10R	50%
4612	fog urban concrete	x	x	x	x	same direction	200 x 100 cm	--	S 4000-N	34%
4613	mortar urban concrete	x	x	x	x	same direction	200 x 100 cm	--	S 3005-Y20R	37%
4713	peanut concrete	x	x	x	x	same direction	100 x 100 cm	--	S 4005-Y20R	28%
4742	pewter concrete	x	x	x	x	same direction	100 x 100 cm	--	S 7502-R	12%
4761	steel concrete	x	x	x	x	same direction	100 x 100 cm	--	S 7000-N	16%
4771	silver concrete	x	x	x	x	same direction	100 x 100 cm	--	S 4500-N	28%
8413	natural oak	x	x	x	x	same direction	100 x 100 cm	16,7 x 100 cm	S 4005-Y20R	32%
8421	polar oak	x	x	x	x	same direction	100 x 100 cm	16,7 x 100 cm	S 3502-Y	39%
8483	Scandinavian oak	x	x	x	x	same direction	100 x 100 cm	16,7 x 100 cm	S 4020-Y20R	32%
8512	smoked chill oak	x	x	x	x	same direction	200 x 100 cm	16,7 x 100 cm	S 5005-Y50R	25%
8513	blond chill oak	x	x	x	x	same direction	200 x 100 cm	16,7 x 100 cm	S 4020-Y10R	29%
8514	pure chill oak	x	x	x	x	same direction	200 x 100 cm	16,7 x 100 cm	S 5010-Y10R	27%
8521	whitewashed chill oak	x	x	x	x	same direction	200 x 100 cm	16,7 x 100 cm	S 3005-Y50R	42%

Available in

Colour n°	Colour	Modul'up 19 dB	Modul'up compact	Sarlon 19 dB	Sarlon 15 dB	Installation direction	Pattern repeat	Planks size	NCS	LRV
8701	grey narrow oak	x	x	x	x	same direction	200 x 100 cm	12,5 x 100 cm	S 3502-Y50R	37%
8703	natural narrow oak	x	x	x	x	same direction	200 x 100 cm	12,5 x 100 cm	S 3020-Y10R	37%
8713	medium narrow oak	x	x	x	x	same direction	200 x 100 cm	12,5 x 100 cm	S 4020-Y20R	32%
8723	weathered narrow oak	x	x	x	x	same direction	200 x 100 cm	12,5 x 100 cm	S 4010-Y10R	34%
8803	dark boreal oak	x	x	x	x	same direction	200 x 100 cm	16,7 x 100 cm	S 6020-Y20R	14%
8804	natural boreal oak	x	x	x	x	same direction	200 x 100 cm	16,7 x 100 cm	S 4010-Y10R	31%
8813	classic boreal oak	x	x	x	x	same direction	200 x 100 cm	16,7 x 100 cm	S 5020-Y20R	23%
90204	soft ochre canyon	x	x	x	x	same direction	100 x 100 cm	--	S 3020-Y	41%
90206	blush canyon	x	x	x	x	same direction	100 x 100 cm	--	S 3030-Y50R	31%
90247	grey blue canyon	x	x	x	x	same direction	100 x 100 cm	--	S 5005-B20G	26%
90400	multicoloured mini terrazzo	x	x	x	x	same direction	200 x 100 cm	--	S 2005-G70Y	54%
90401	grey mini terrazzo	x	x	x	x	same direction	200 x 100 cm	--	S 2005-G60Y	56%
90403	warm mini terrazzo	x	x	x	x	same direction	200 x 100 cm	--	S 2005-Y10R	59%
90703	champagne halo	x	x	x	x	same direction	200 x 150 cm	--	S 2020-Y	56%
90706	floral halo	x	x	x	x	same direction	200 x 150 cm	--	S 2040-Y90R	47%
90707	lagoon halo	x	x	x	x	same direction	200 x 150 cm	--	S 2020-G	46%
90752	grey halo contour	x	x	x	x	same direction	200 x 150 cm	--	S 3005-G50Y	40%
90753	linen halo contour	x	x	x	x	same direction	200 x 150 cm	--	S 3010-Y10R	43%
90757	blue halo contour	x	x	x	x	same direction	200 x 150 cm	--	S 4010-B10G	30%
90758	citrus halo contour	x	x	x	x	same direction	200 x 150 cm	--	S 1040-G80Y	53%
90767	denim hao contour	x	x	x	x	same direction	200 x 150 cm	--	S 7010-R90B	10%
90909	grey mimetico	x	x	x	x	same direction	200 x 120 cm	--	S 4502-Y	15%
91651	grey travertine	x	x	x	x	same direction	200 x 150 cm	--	S 3005-Y	47%
91653	natural travertine	x	x	x	x	same direction	200 x 150 cm	--	S 2010-Y10R	50%
92302	light grey new nairobi	x	x	x	x	same direction	100 x 120 cm	--	S 4502-R50B	28%
92303	sand new nairobi	x	x	x	x	same direction	100 x 120 cm	--	S 5010-Y10R	27%
92312	anthracite new nairobi	x	x	x	x	same direction	100 x 120 cm	--	S 5500-N	22%
92353	flax new nairobi	x	x	x	x	same direction	100 x 120 cm	--	S 3010-Y10R	38%
98103	natural walnut	x	x	x	x	same direction	200 x 300 cm	20 x 150 cm	S 6010-Y10R	16%
98144	dark walnut	x	x	x	x	same direction	200 x 300 cm	20 x 150 cm	S 7020-Y10R	10%
98503	natural shaped wood	x	x	x	x	same direction	200 x 150 cm	--	S 3020-Y	34%
98506	terracotta shaped wood	x	x	x	x	same direction	200 x 150 cm	--	S 3020-Y10R	29%
98507	blue shaped wood	x	x	x	x	same direction	200 x 150 cm	--	S 6010-Y10R	15%
98513	contrasted shaped wood	x	x	x	x	same direction	200 x 150 cm	--	S 4020-Y10R	29%
98523	honey shaped wood	x	x	x	x	same direction	200 x 150 cm	--	S 4020-Y10R	24%
98603	whitewashed infinity oak	x	x	x	x	same direction	200 x 150 cm	--	S 3020-Y10R	36%
98613	natural infinity oak	x	x	x	x	same direction	200 x 150 cm	--	S 5020-Y20R	23%
98623	dark infinity oak	x	x	x	x	same direction	200 x 150 cm	--	S 6020-Y10R	16%
98713	light industrial parquet	x	x	x	x	same direction	200 x 120 cm	3 x 24 cm	S 3020-Y10R	34%
98714	golden industrial parquet	x	x	x	x	same direction	200 x 120 cm	3 x 24 cm	S 4020-Y20R	28%

**Other Countries**

Forbo Flooring B.V.  
P.O. Box 13  
1560 AA Krommenie  
The Netherlands  
T: +31 75 647 74 77  
F: +31 75 647 77 01  
contact@forbo.com  
www.forbo-flooring.com

