



**ARMORCOVE**  
by forbo

the future of flash coving



- Guaranteed puncture-proof for life
- Ideal for acute care areas
- Fast room renovations
- Integral cove cap and backing
- Slim cap profile minimizes dirt accumulation along the top edge
- Full aluminum backing provides stronger corners less prone to damage
- Keeps hygienic spaces hygienic
- Prevents infection control issues from water intrusion and HAI's
- Installs at the same price or less as existing flash cove alternatives
- Dramatically faster installation of ArmorCove vs. traditional flash cove
- Patent pending

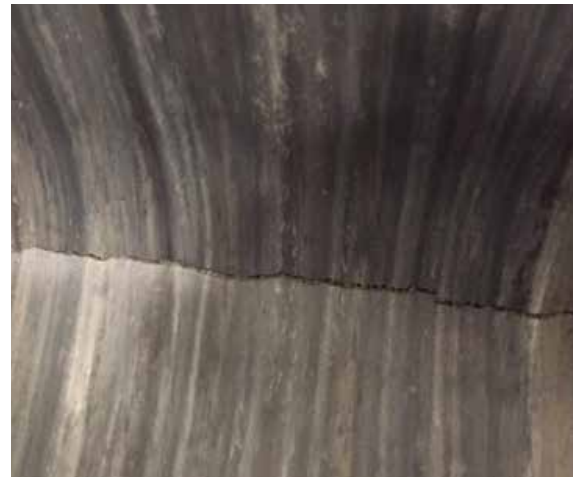
**forbo**

FLOORING SYSTEMS

# Anatomy of a Flash Cove Failure:

- Material is commonly not fully adhered to the cove stick or the wall, allowing for movement or bubbles in the material.
- Traditional flash coving does not have a hard backer, allowing for punctures to occur.
- The cove cap is not consistently installed, leaving the appearance of waves along the wall.
- Repairs or replacements are difficult and can be extremely expensive.

With its fully backed and integral cove cap, **ArmorCove** prevents all of these failures. **ArmorCove** is installed with Forbo's specially formulated **ArmorFix** cove adhesive.



Prevent Failures with

