



Textile Carpet Tiles

tessera[®] layout & outline



creating better environments

forbo
FLOORING SYSTEMS



tessera[®] layout & outline

Colour and coordination for connected interiors

Create a harmonious balanced and purposeful flow with Tessera Layout & Outline. An essential collection, this pairing easily integrates with any interior space, whether you're defining calm, connected zones or introducing visual cohesion across workplace and educational areas. With a modern, versatile and coordinated colour palette, Tessera Layout & Outline gives you the creative freedom to craft schemes that are modern, intuitively engaging and easy to navigate.

Designed to coordinate

Tessera Layout is both versatile and refined, with a balanced curated colour palette of contemporary neutrals and rich, directional warmer tones. Colours can be used independently or in colour combinations to complement office and education interior trends.

Tessera Outline complements Layout with a subtly randomised striped loop pile design, each colourway paired with two Layout tones for a coordinated plain-and-linear duo. Sharing core colours, Layout offers a versatile foundation while Outline adds refined linear detail, together enabling transitions, zoning, and cohesive schemes across modern workplaces and educational spaces.

High-performance loop pile construction

- Lasting colour and quality; made from hard-wearing 100% solution-dyed polyamide, each fibre is coloured through its core for excellent colour retention and resistance to wear and fading.
- Robust commercial performance; hard wearing, long lasting low level loop engineered to Class 33 classification confirm the suitability of Layout & Outline for intensive workplace and education use.
- Low environmental impact; with 3.48kg embodied carbon (A1-A3), 61% recycled content and produced using renewable energy, Tessera Layout & Outline deliver flooring with reduced environmental impact, confirmed by a third party verified EPD.
- Indoor Air Comfort Gold and GUT certification ensures that Tessera Layout & Outline supports healthier indoor air environments.

A trend-led palette for contemporary spaces

- Create on-trend, cohesive interiors; with a comprehensive selection of 41 colour tones spanning all key colour families, expertly curated to align with the latest commercial office and education design trends.
- Design with complete flexibility - Layout & Outline share yarn colours with Tessera Inline, as well as being designed to be compatible across other Tessera design ranges and the wider Forbo Flooring portfolio, making it easy to build fully harmonised flooring schemes.



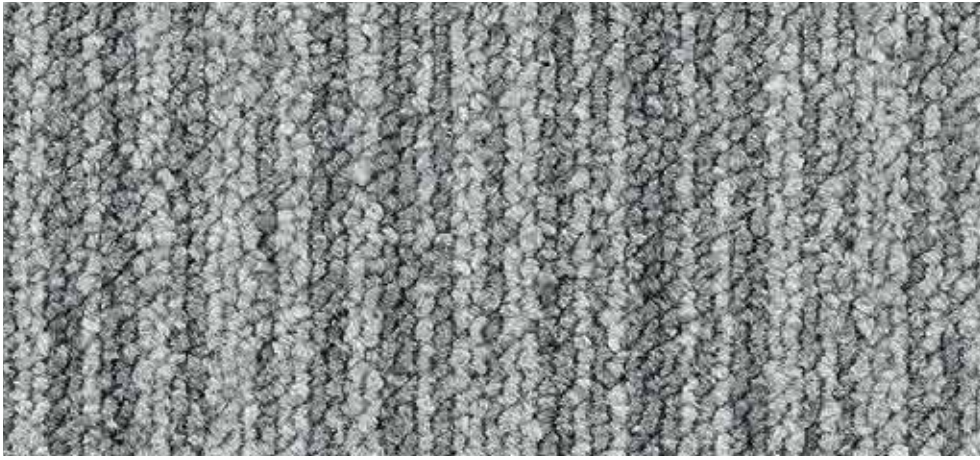
Layout **2112** | frosting LRV 28%



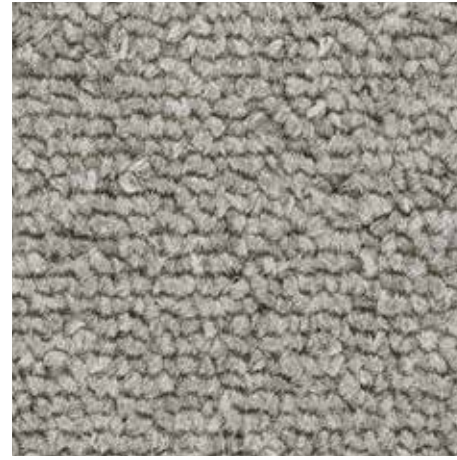
Layout **2109** | shard LRV 17%



Outline **3110** | calico LRV 22%



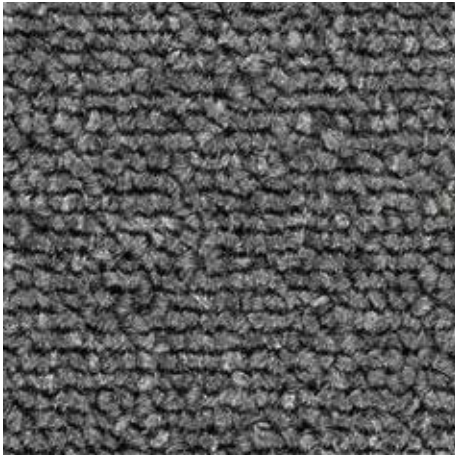
Outline **3102** | soda LRV 21%



Layout **2113** | nougat LRV 22%



Layout **2134** | flax LRV 19%



Layout **2104** | alloy LRV 9%



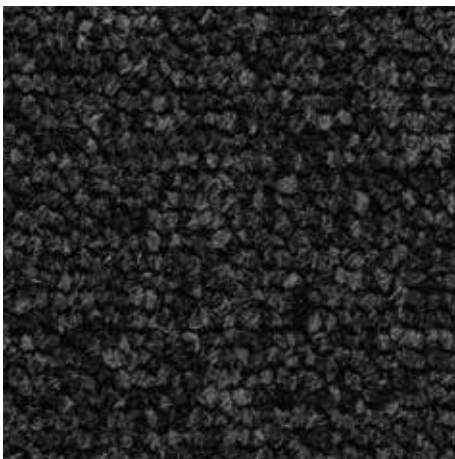
Layout **2108** | calcium LRV 13%



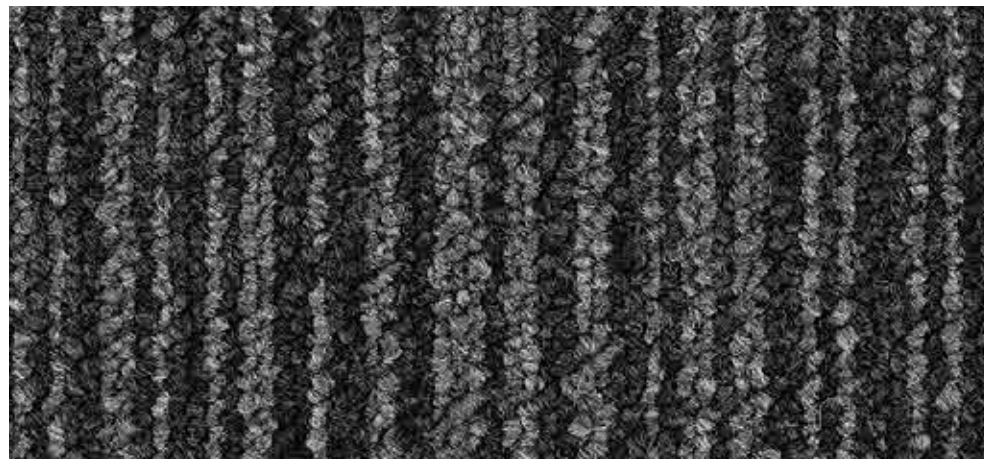
Layout **2105** | aniseed LRV 9%



Layout **2135** | cinders LRV 9%



Layout **2100** | mono LRV 4%



Outline **3100** | plasmatron LRV 6%

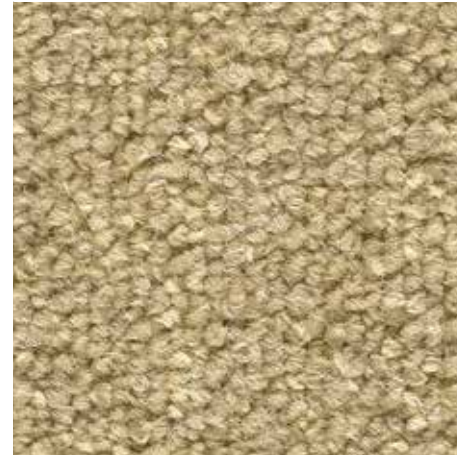


Layout **2101** | graphine LRV 5%



Outline **3104** | soufflé

LRV 17%



Layout **2136** | wheat

LRV 27%



Layout **2137** | honey

LRV 27%



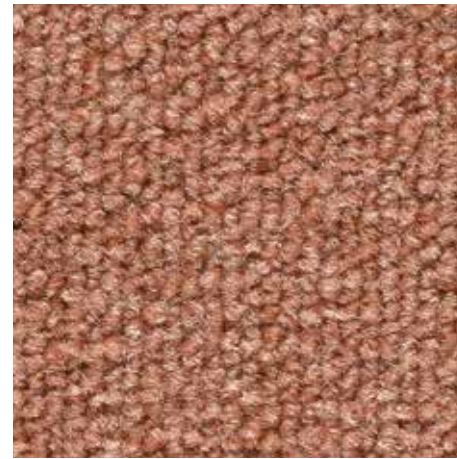
Layout **2106** | humbug

LRV 14%



Layout **2110** | fudge

LRV 21%



Layout **2138** | penny

LRV 16%



Layout **2139** | amber

LRV 17%



Outline **3101** | colabottle

LRV 9%



Layout **2140** | damson

LRV 10%



Layout **2141** | papaya

LRV 17%



Layout **2103** | balsamic

LRV 13%



Layout **2107** | brulee

LRV 7%



Layout **2142** | cherry

LRV 8%

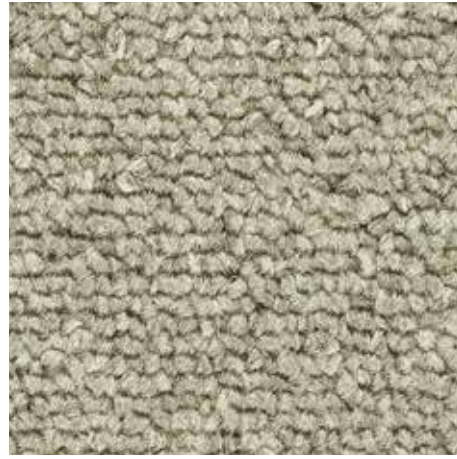


Layout **2143** | tuscan

LRV 8%



Layout **2114** | powder LRV 24%



Layout **2115** | sherbet LRV 27%



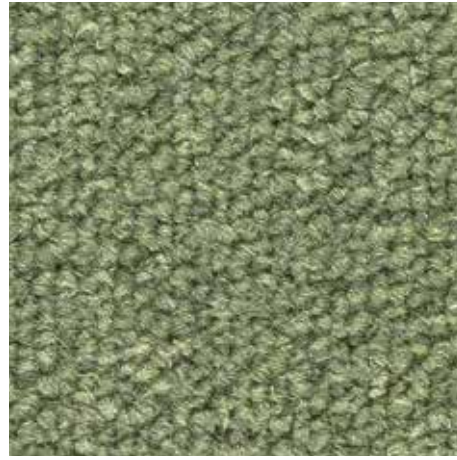
Layout **2125** | tonic LRV 15%



Layout **2144** | capri LRV 9%



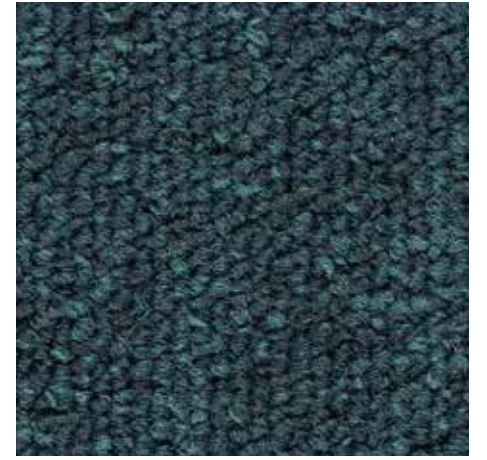
Layout **2111** | gherkin LRV 14%



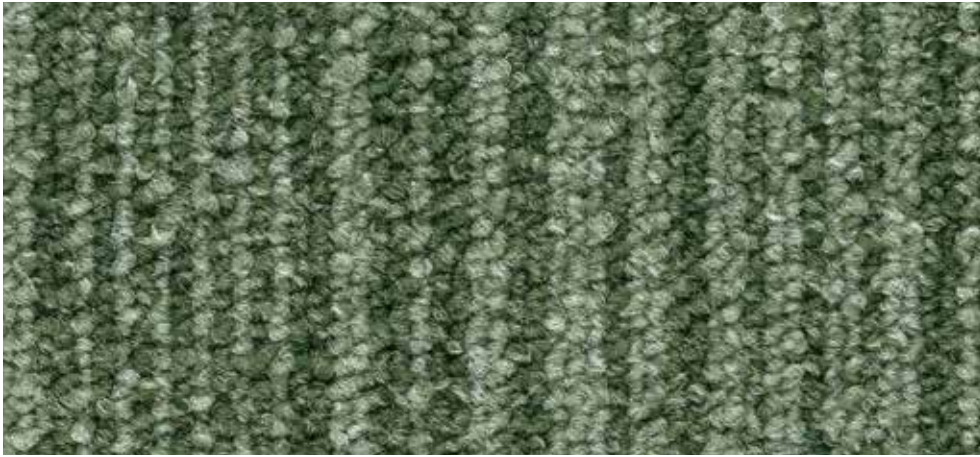
Layout **2145** | artichoke LRV 17%



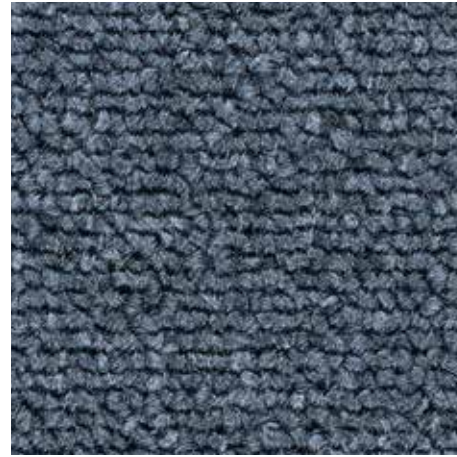
Layout **2146** | cove LRV 11%



Layout **2147** | teal LRV 7%



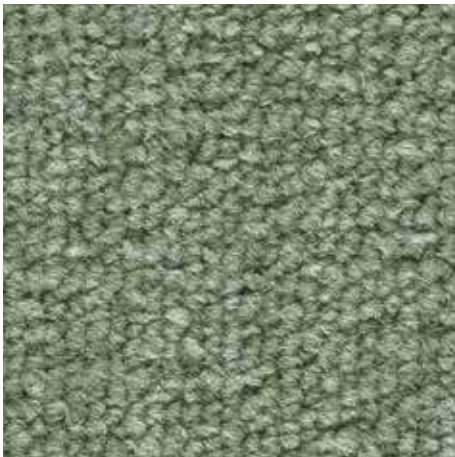
Outline **3111** | peapod LRV 11%



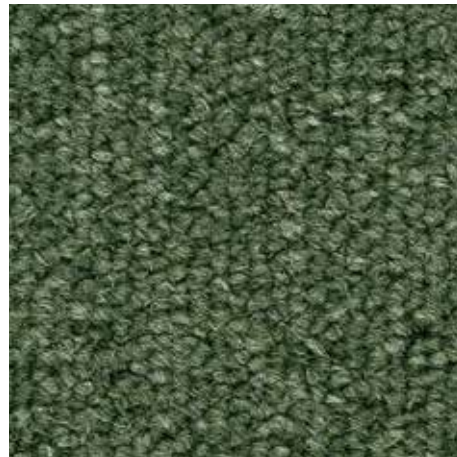
Layout **2122** | drench LRV 7%



Layout **2148** | ballpoint LRV 6%



Layout **2149** | glade LRV 19%



Layout **2150** | spruce LRV 9%



Outline **3112** | jetty LRV 8%

Technical specifications

Layout & Outline meet the requirements of EN 1307

	Description	Tufted low level loop pile carpet tile
	Tile size	EN ISO 4342:2018 50 cm x 50 cm
	Total thickness	ISO 1765 6.1 mm
	Pile height	ISO 1766 3.1 mm
	Collection size	Layout 34 - Outline 7
	Packaging per carton tiles	20 (5 m ²)
	Commercial use	EN ISO 10874 Class 33
	Pile composition	100% polyamide 6
	Dye method	100% solution dyed
	Stitch density	ISO 1763 193,060 per m ²
	Pile weight	ISO 8543 580 g/m ²
	Total weight	ISO 8543 3895 g/m ²
	Primary backing	Polyester
	Secondary backing	ProBac™ recycled mineral filler with low amount of modified bitumen and polyester fleece
	Alternative available secondary backing	SOFTbac®
	Acoustical impact noise reduction	ISO 10140-3 26 dB
	Acoustical sound absorption	ISO 354 $\alpha_w = 0.20$ (H)
	Castor chair continuous use	ISO 4918 $r \geq 2.4$
	Colour fastness to light	EN ISO 105-B02 ≥ 6
	Dimensional stability	EN 986 $\leq 0.2\%$
	Indoor air emissions: TVOC after 28 days	EN 16516 ≤ 0.1 mg/m ³
	Creating Better Environments	
	Renewable Energy	All Tessera carpet tiles are manufactured using 100% renewable energy (electricity & biogas)
	Recycled Content	Layout & Outline carpet tiles contain 61% recycled content by weight
	Indoor air quality	Layout & Outline carpet tiles comply to Indoor Air Comfort Gold 8.0 (2022)
	Ska Rating	Layout & Outline carpet tiles meets Ska Rating criteria for M12 soft floor coverings in office, retail and higher education schemes
	Prodis-GUT	www.pro-dis.info 2C31F4FE
	Installation method	Layout: Monolithic, brick, tessellated, quarter turn & quarter brick Outline: Brick, tessellated, quarter turn & quarter brick

Layout & Outline carpet tiles meet the requirements of EN 14041:2004 and BS EN 14041:2004



	Product code	EN 14041 1170100-DOP-109
	Product code	BS EN 14041 1170100-DoP-GB109
	Reaction to fire	EN 13501-1 B _{fl} -s1, G, NCS
	Slip resistance	EN 13893 $\mu \geq 0.30$
	Body voltage	ISO 6356 ≤ 2.0 kV
	Thermal conductivity	EN 12524 0.06 W/mK

All Forbo Flooring Systems' sales organisations and manufacturing sites worldwide have certified Quality Management Systems in accordance with ISO 9001. All Forbo Flooring Systems' manufacturing plants have certified Environmental Management Systems in accordance with ISO 14001. Tessera carpet tiles and planks are manufactured in a facility certified to SA8000* and ISO 45001. The Life Cycle Assessment (LCA) of Forbo Flooring Systems' products is documented in individual Environmental product declarations (EPD's).

Colourway choice

As with any product, colour and design influence the appearance retention of the floor. The level and type of traffic should be considered as part of the process for selecting colourways. Light colours may not be suitable for heavy traffic areas.

Installation and maintenance Shades may vary from batch to batch and should be checked before installation. Batches should not be mixed in the same location. All Tessera products are to be installed in full accordance with Forbo installation instructions and recognised trade standards.

Our recommended adhesive for our collection of Tessera carpet tiles is 542 Eurofix Tack Plus.

A well designed entrance flooring system will prevent dirt and moisture from being tracked into the building, prolonging the life of the carpet tiles, reducing cleaning, repair and overall maintenance costs. **Forbo Coral and Nuway entrance systems** are independently proven to remove and retain up to 95% of all dirt and moisture entering a building. Please contact customer services for more information.

Regular vacuuming is essential (using a high suction power driven brush vacuum). Spills and surface stains can be removed by sponging with a damp cloth or, for more resistant stains, with a mild detergent solution. For full installation and cleaning and maintenance instructions please go to www.forbo-flooring.com

The Netherlands

Forbo Flooring B.V.
Postbus 13
1560 AA Krommenie
T: (075) 647 78 80
contact@forbo.com
www.forbo-flooring.nl

Portugal

Forbo-Revestimentos, SA
Zona Industrial da Maia I, Sector VII
Tv. Eng. Nobre da Costa, 87
Apartado 6091
4476-908 Maia
T: +351 229 996 900
F: +351 229 996 909
info.revestimentos@forbo.com
www.forbo-flooring.com.pt

Poland

Forbo Flooring Polska
ul. Jeleniogórska 16
60-179 Poznań
T: +48 (61) 862 13 82
F: +48 (61) 622 71 75
info.pl@forbo.com
www.forbo-flooring.pl

Other countries

Forbo Flooring B.V.
P.O. Box 13
1560 AA Krommenie
The Netherlands
T: +31 75 647 74 77
question@forbo.com
www.forbo-flooring.com