



**siegling prolink**  
modular belts

Product data label

ASSEMBLY / DISASSEMBLY



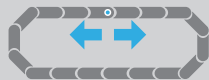
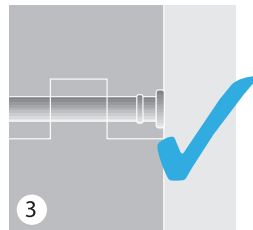
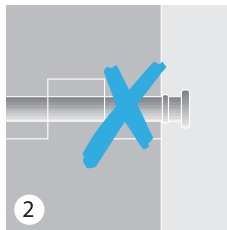
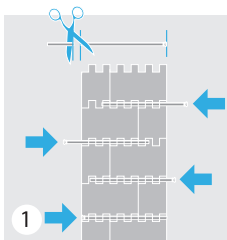
# Series 1, 2, 3, 4.1, 8



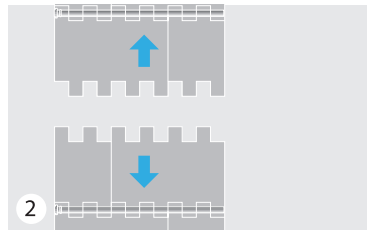
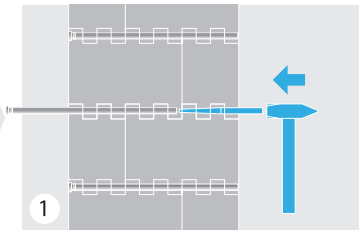
**siegling prolink**  
modular belts



Assembly  
Montage  
Montage  
Montaje



Disassembly  
Demontage  
Démontage  
Desmontaje





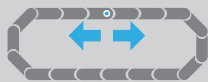
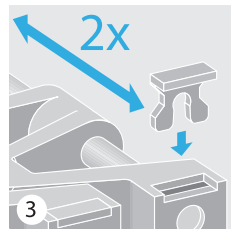
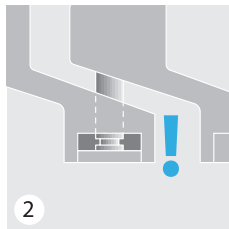
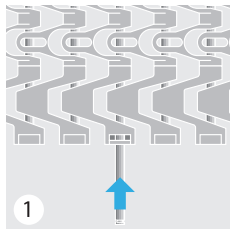
# Series 5



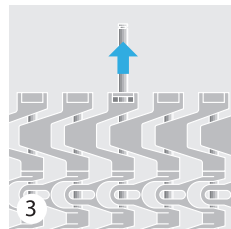
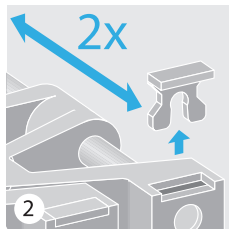
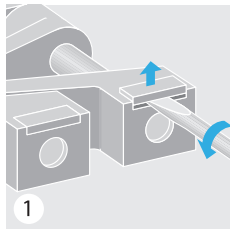
**siegling prolink**  
modular belts



Assembly  
Montage  
Montage  
Montaje



Disassembly  
Demontage  
Démontage  
Desmontaje





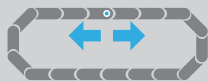
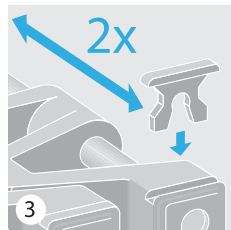
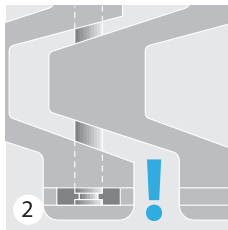
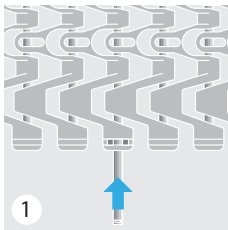
# Series 5 ST



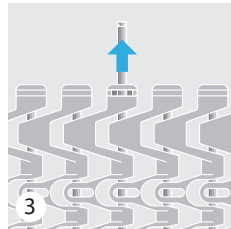
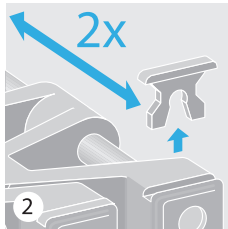
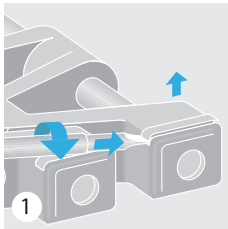
**siegling prolink**  
modular belts



Assembly  
Montage  
Montage  
Montaje



Disassembly  
Demontage  
Démontage  
Desmontaje







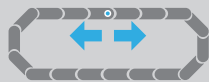
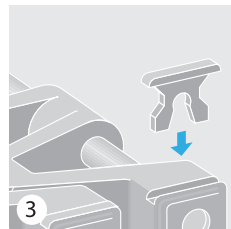
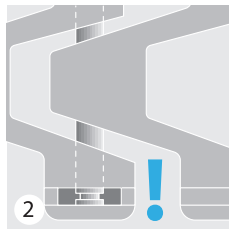
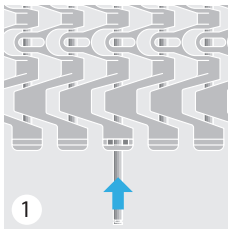
# Combo belts (S5 ST & S11)



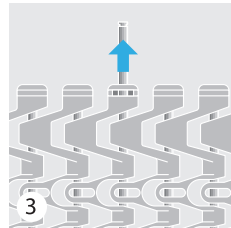
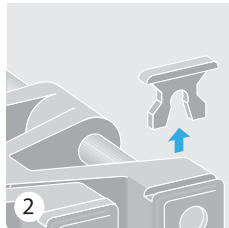
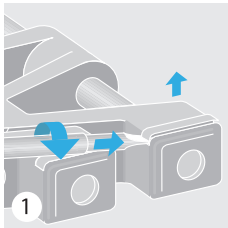
**siegling prolink**  
modular belts



Assembly  
Montage  
Montage  
Montaje



Disassembly  
Demontage  
Démontage  
Desmontaje





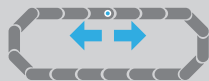
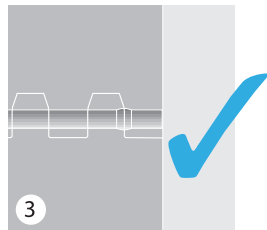
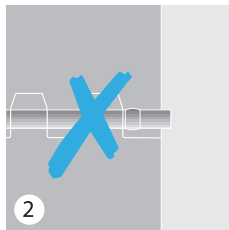
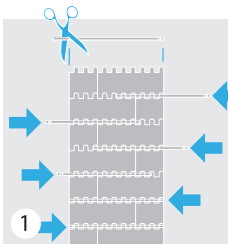
# Series 6.1, 10



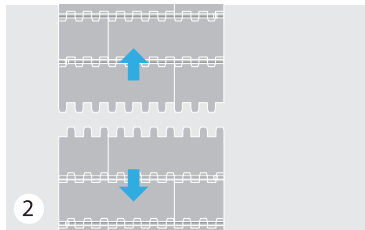
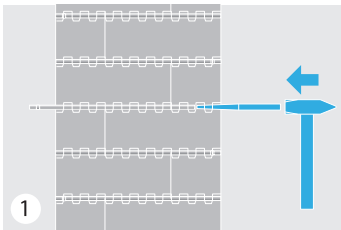
**siegling prolink**  
modular belts



Assembly  
Montage  
Montage  
Montaje



Disassembly  
Demontage  
Démontage  
Desmontaje





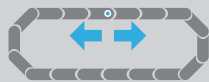
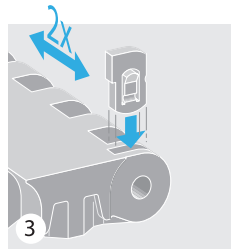
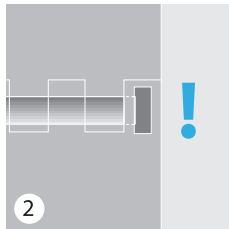
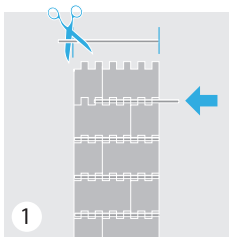
# Series 7



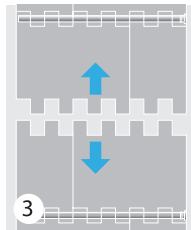
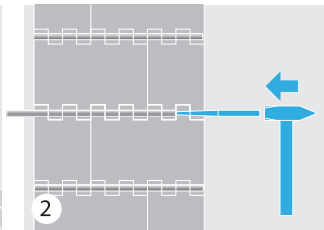
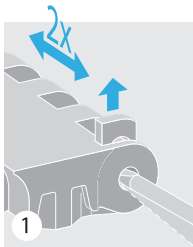
**siegling prolink**  
modular belts



Assembly  
Montage  
Montage  
Montaje



Disassembly  
Demontage  
Démontage  
Desmontaje





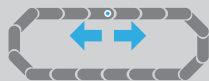
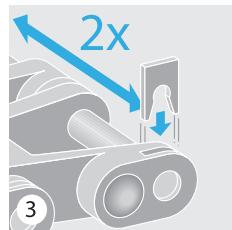
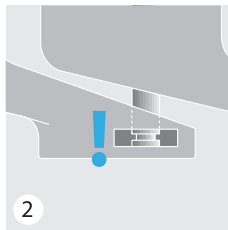
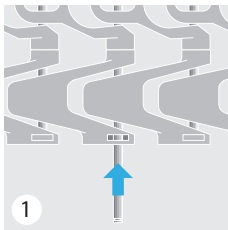
# Series 9



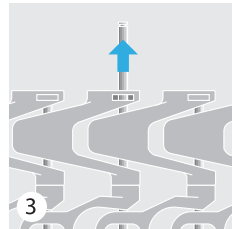
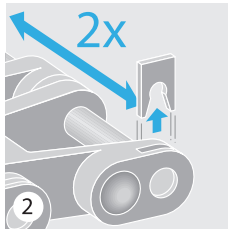
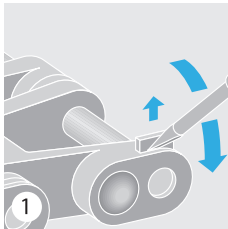
**siegling prolink**  
modular belts



Assembly  
Montage  
Montage  
Montaje



Disassembly  
Demontage  
Démontage  
Desmontaje







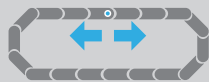
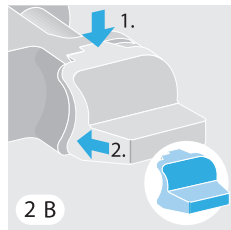
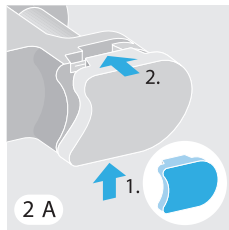
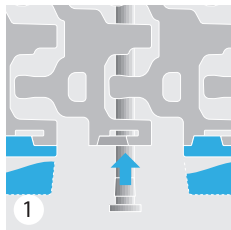
# Series 11



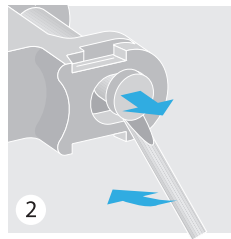
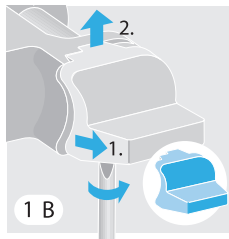
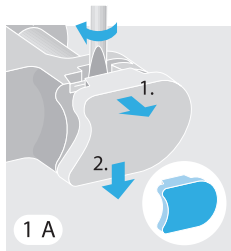
**siegling prolink**  
modular belts



Assembly  
Montage  
Montage  
Montaje



Disassembly  
Demontage  
Démontage  
Desmontaje





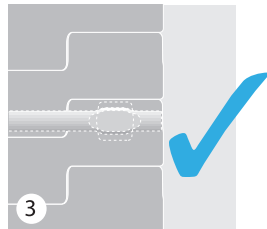
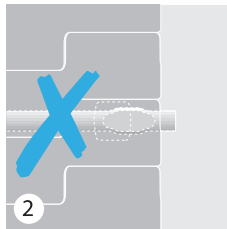
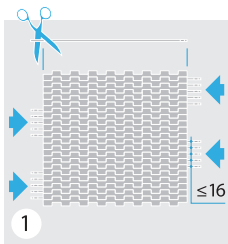
# Series 13



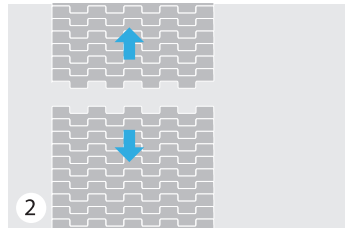
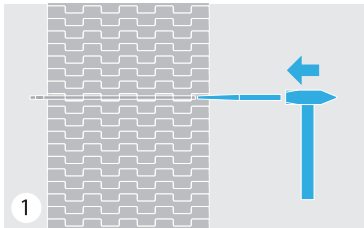
**siegling prolink**  
modular belts



Assembly  
Montage  
Montage  
Montaje



Disassembly  
Demontage  
Démontage  
Desmontaje





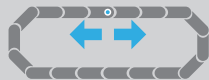
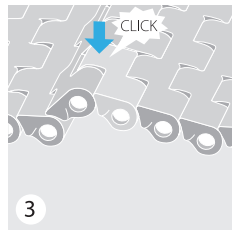
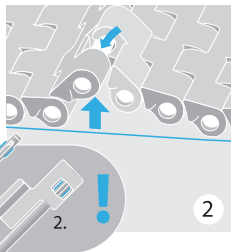
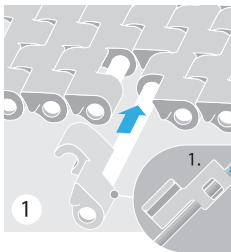
# Series 13 ProSnap



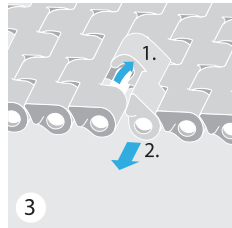
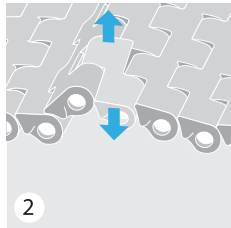
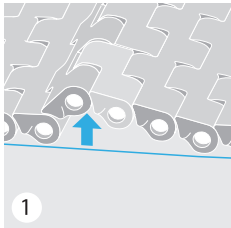
**siegling prolink**  
modular belts



Assembly  
Montage  
Montage  
Montaje



Disassembly  
Demontage  
Démontage  
Desmontaje





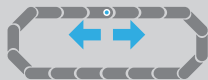
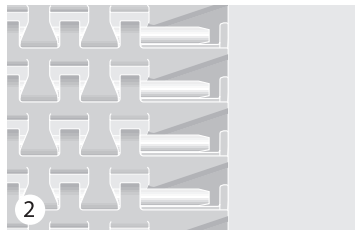
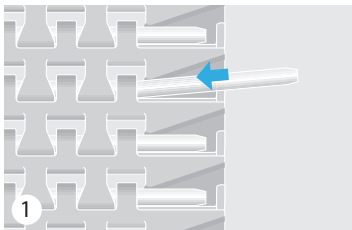
# Series 14 (A), 15 (A)



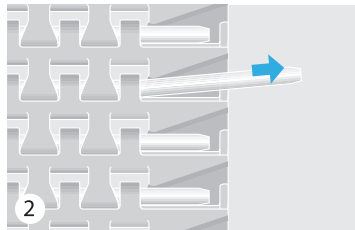
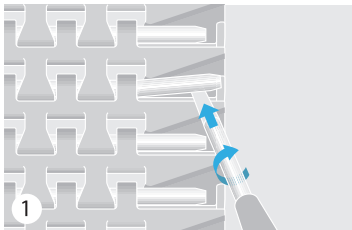
**siegling prolink**  
modular belts



Assembly  
Montage  
Montage  
Montaje



Disassembly  
Demontage  
Démontage  
Desmontaje







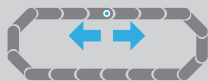
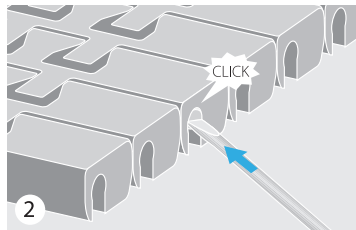
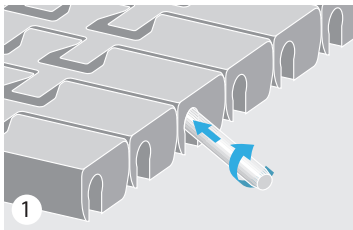
# Series 14 (B),15 (B)



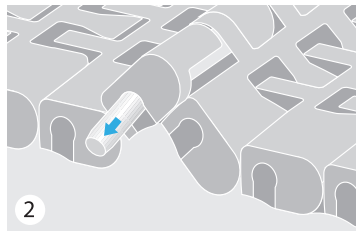
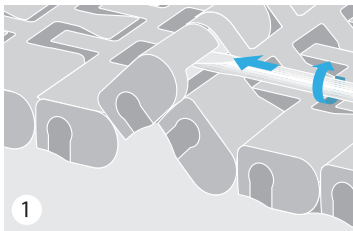
**siegling prolink**  
modular belts



Assembly  
Montage  
Montage  
Montaje



Disassembly  
Demontage  
Démontage  
Desmontaje

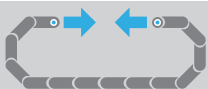




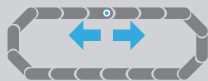
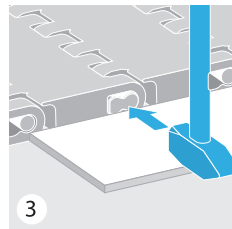
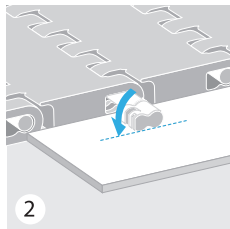
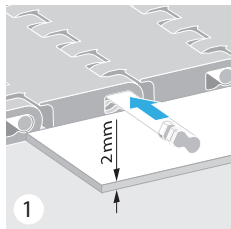
# Series 17



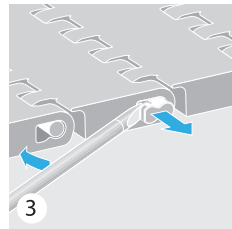
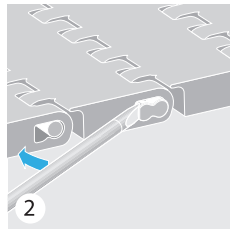
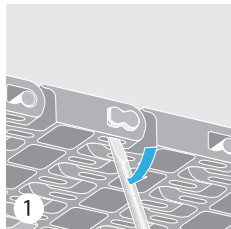
**siegling prolink**  
modular belts



Assembly  
Montage  
Montage  
Montaje



Disassembly  
Demontage  
Démontage  
Desmontaje

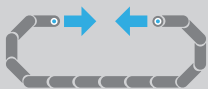




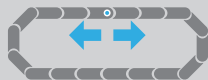
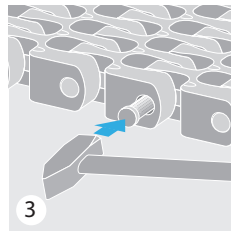
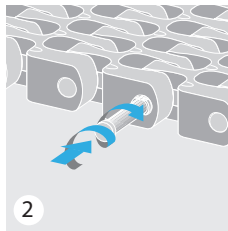
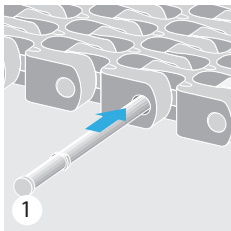
# Series 18 (A)



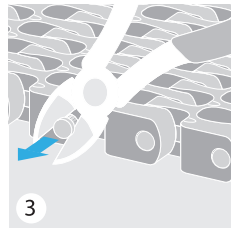
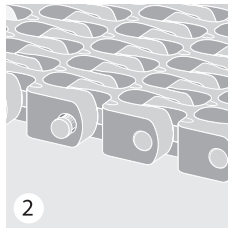
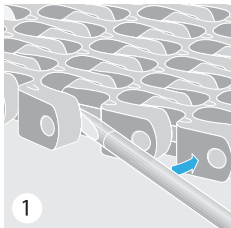
**siegling prolink**  
modular belts



Assembly  
Montage  
Montage  
Montaje



Disassembly  
Demontage  
Démontage  
Desmontaje

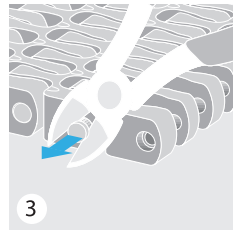
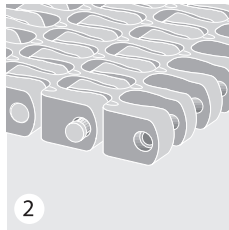
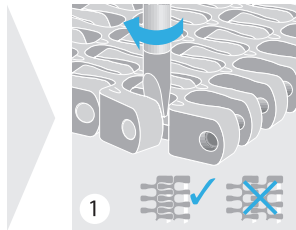
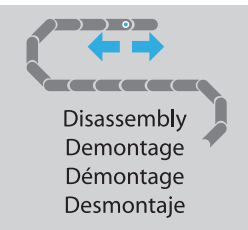




# Series 18 (B)



**siegling prolink**  
modular belts







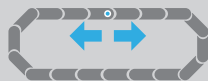
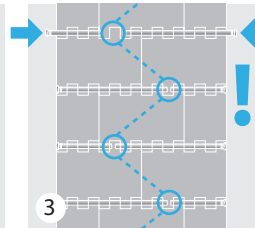
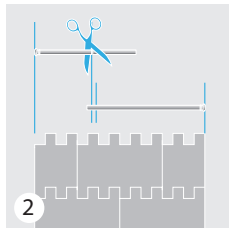
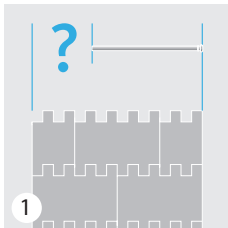


# siegling prolink

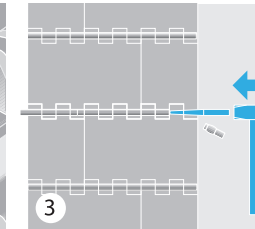
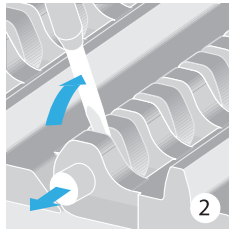
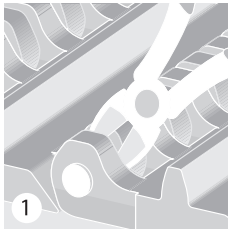
modular belts



Assembly  
Montage  
Montage  
Montaje



Disassembly  
Demontage  
Démontage  
Desmontaje







## Siegling – total belting solutions

### **Forbo Siegling GmbH**

Lilienthalstraße 6/8, D-30179 Hannover

Phone +49 511 6704 0

[www.forbo-siegling.com](http://www.forbo-siegling.com), [siegling@forbo.com](mailto:siegling@forbo.com)



MOVEMENT SYSTEMS

**Ref. no. 417A-0**

10/22 · UDH · Reproduction of text or parts thereof only with our approval. Subject to change.