

*Bespoke*

**DESIGNS BY  
J. DE BRUYN  
(FLOORING SERVICES) LTD**



# INTRODUCTION

J De Bruyn's expertise in tile and precision design cutting has been long established. We primarily cut our designs and tiles from Forbo Marmoleum sheet but we can cut from other types of material. Marmoleum is made from 97% natural raw materials, 72% is rapidly renewable and has 43% recycled content. It is warm underfoot, is Allergy UK approved, is anti-bacterial due to its Top Shield 2 protective layer, and you can pick from over 300 colours for a truly bespoke design floor.

Our design work is a skilled process and carried out by our long serving design team. All material used goes through a minimum 3 day preparation process to enable us to cut your order to our high standards. Each design is cut using precision tooling into individual pieces, which are then hand assembled by our team into panels, ready for an easier installation process. In this brochure we have highlighted a selection of our designs, but more can be found on our website, [www.de-bruyn.co.uk](http://www.de-bruyn.co.uk)

For our basic tile cutting service we offer tiles ranging from 50mm up to 900mm in size. We also cut design strips ranging from 5mm to 300mm in width, which are cut to nominal 1 metre lengths. Lastly, we offer a corner clipping tile service to accommodate key squares ranging from 20mm up to 120mm. We can perform this service on tiles cut from Marmoleum sheet, pre packed Modular tiles, or other manufactured tiles.

For any other tile or design requirements please contact us and we will try and accommodate your needs.

*Yours,*

*J. De-Bruyn (Flooring Services) Ltd.*

# TILES & DESIGNS

The tiles and designs listed are manufactured and distributed by J De Bruyn Limited. They are cut from Marmoleum Marbleds and Solids 2.5mm sheet Linoleum.

Please note these tiles should be installed within 10 days maximum, as they are not dimensionally stable until they are fitted.

These tiles and designs can be cut from other Forbo Linoleums and Vinyls at an extra cost.

(Excluding Safety Flooring)

## *Standard Size Tiles*

50 mm	300 mm
70 mm	333 mm
100 mm	450 mm
120mm	500 mm
150 mm	610 mm
200 mm	900 mm
229 mm	

## *Rectangles*

225mm x 75mm  
450mm x 145mm  
610mm x 200mm



## RD101 – 50mm – 200MM PANELS



### RD101- 50mm – 200MM PER PANEL – 25 PANELS PER M2

A = 50MM KEY – 25 KEYS PER M2

B = 150MM X 50MM STRIP – 50 STRIPS PER M2

C = 50MM KEY – 100 KEYS PER M2

D = 50MM X 35MM TRIANGLE – 200 TRIANGLES PER M2

E = 50MM X 35MM TRIANGLE – 100 TRIANGLES PER M2

F = 50MM X 35MM TRIANGLE – 100 TRIANGLES PER M2

G = 50MM KEY – 25 KEYS PER M2

## RD102 – 150MM PANELS



### RD102 – 150MM PER PANEL – 44 PANELS PER M2

A = 150MM PLAIN TILE = 22 TILES PER M2

B = 50MM KEY = 88 KEYS PER M2

C = 50MM X 35MM TRIANGLE = 176 TRIANGLES PER M2

D = 50MM X 35MM TRIANGLE = 88 TRIANGLES PER M2

E = 50MM X 35MM TRIANGLE = 88 TRIANGLES PER M2

F = 50MM KEY = 22 KEYS PER M2.



## RD107 – 210MM PANEL



### RD107 – 210MM PANEL – 23 PANELS IN TOTAL – 11.5 OF EACH DESIGN

A = 100MM X 70MM TRIANGLE = 184 TRIANGLES PER M2

B = 100MM X 70MM TRIANGLE = 92 TRIANGLES PER M2

C = 100MM X 70MM TRIANGLE = 44 TRIANGLES PER M2

C = 70MM KEY = 12 KEYS PER M2

D = 100MM X 70MM TRIANGLE = 44 TRIANGLES PER M2

D = 70MM KEY = 12 KEYS PER M2

# RD108 – 36 PIECES PER COLOUR, PER M2



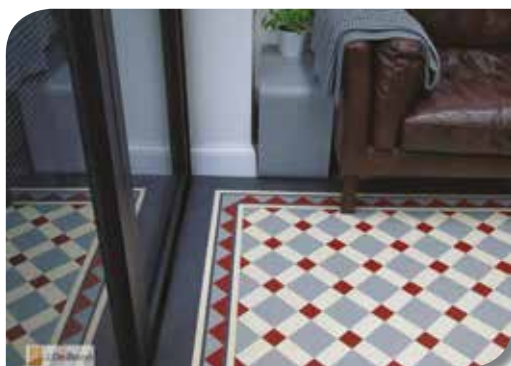
## RD108 – 36 PIECES, PER COLOUR, PER M2 (167MM EDGE TO EDGE)

A = 36 PIECES PER M2

B = 36 PIECES PER M2

C = 36 PIECES PER M2

## RD109 – 150MM PER PANEL



### RD109 – 150MM PER PANEL – 45 PANELS PER M2

A = 50MM KEYS = 45 KEYS PER M2  
B = 100MM X 50MM = 90 STRIPS PER M2  
C = 100MM TILES = 45 TILES PER M2



## RD110 – 200MM PER PANEL



### RD110 – 200MM PER PANEL – 25 PANELS PER M2

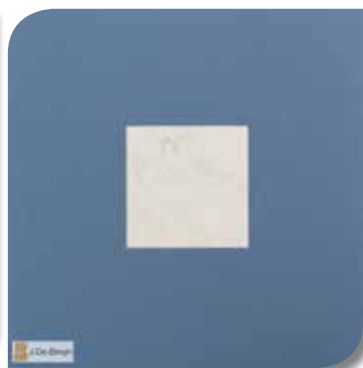
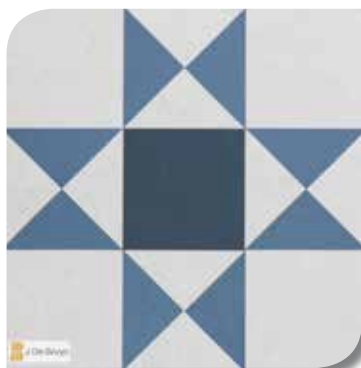
A = 150MM X 50MM STRIPS = 50 PER M2

B = 50MM KEYS = 25 KEYS PER M2

C = 150MM TILES = 25 TILES PER M2

D = 50MM KEYS = 25 KEYS PER M2

## RD111 – 50mm – 150MM PER PANEL \*



### RD111 - 50mm – 150MM PER PANEL – 44 PANELS PER M2

A = 150MM TILES = 22 TILES PER M2

B = 50MM KEYS = 22 KEYS PER M2

C = 50MM KEYS = 88 KEYS PER M2

D = 50MM X 35MM TRIANGLES = 176 TRIANGLES PER M2

E = 50MM X 35MM TRIANGLES = 88 TRIANGLES PER M2

F = 50MM X 35MM TRIANGLES = 88 TRIANGLES PER M2

G = 50MM KEYS = 22 KEYS PER M2

\* AVAILABLE IN BIGGER SIZE (RD111-70MM)

## RD112 – 200MM PER PANEL



### RD112 – 200MM PER PANEL – 25 PANELS PER M2

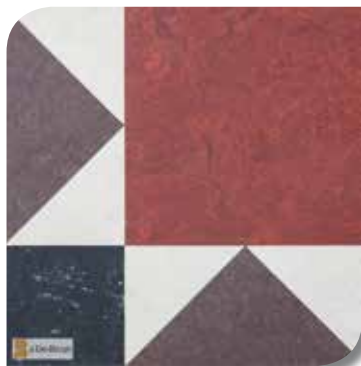
A1 = 50MM KEYS = 100 KEYS PER M2

B1 = 150MM TILES = 25 TILES PER M2

A = 50MM X 35MM TRIANGLES = 200 TRIANGLES PER M2

B = 50MM X 35MM = 200 TRIANGLES PER M2

## RD113 – 150MM PER PANEL



### RD113 – 150MM PER PANELS – 45 PANELS PER M2 – 22.5 OF EACH DESIGN

A = 50MM KEYS = 45 KEYS PER M2

B = 70MM X 50MM TRIANGLES = 180 TRIANGLES PER M2

C = 100MM X 70MM TRIANGLES = 90 TRIANGLES PER M2

D = 100MM TILES = 22.5 TILES PER M2

E = 100MM TILES = 22.5 TILES PER M2



## RD114 – 220MM PER PANEL



### RD114 – 220MM PER PANEL – 21 PANELS PER M2

A = 150MM X 70MM MITRED STRIP = 42 STRIPS PER M2

B = 150MM TILE = 21 TILES PER M2

C = 50MM X 35MM TRIANGLE = 168 TRIANGLES PER M2

D = 50MM X 35MM TRIANGLE = 84 TRIANGLES PER M2

E = 50MM KEY = 21 KEYS PER M2

F = 50MM X 35MM TRIANGLE = 84 TRIANGLES PER M2

## RD115 – 350MM PER PANEL



### RD115 – 350MM PER PANEL – 8 PANELS PER M2

A = 200MM X 50MM STRIP = 16 STRIPS PER M2

A1 = 50MM KEY = 32 KEYS PER M2

B = 50MM KEY = 8 KEYS PER M2

B1 = 70MM X 50MM TRIANGLE = 64 TRIANGLES

C = 50MM X 35MM TRIANGLE = 32 TRIANGLES

C1 = 70MM KEY = 8 KEYS

D = 50MM X 35MM TRIANGLE = 64 TRIANGLES

E = 50MM X 35MM TRIANGLE = 32 TRIANGLES

F = 50MM KEY = 64 KEYS

F1 = 70MM X 50MM TRIANGLE = 64 TRIANGLES

G = 70MM KEY = 32 KEYS

G1 = 50MM KEY = 32 KEYS

H = 70MM X 50MM TRIANGLE = 32 TRIANGLES

## RD116 – 200MM PER PANEL



### RD116 – 200MM PER PANEL – 25 PANELS PER M2 – 12.5 PER EACH DESIGN PANEL

A = 50MM KEY = 52 KEYS PER M2

B = 100MM X 70MM TRIANGLE = 52 TRIANGLES PER M2

C = 70MM X 50MM TRIANGLE = 104 TRIANGLES PER M2

D = 70MM X 50MM TRIANGLE = 52 TRIANGLES PER M2

E = 50MM X 35MM TRIANGLE = 52 TRIANGLES PER M2

F = 50MM KEY = 13 KEYS PER M2

G = 140MM X 100MM TRIANGLE = 52 TRIANGLES PER M2

H = 100MM X 70MM TRIANGLE = 52 TRIANGLES PER M2

I = 100MM TILE = 13 TILES PER M2



## RD117 – 200MM PER PANEL



### RD117 – 200MM PER PANEL – 25 PANELS PER M2

A = 70MM X 50MM TRIANGLE = 200 TRIANGLES PER M2

B = 70MM X 50MM TRIANGLE = 300 TRIANGLES PER M2

A1 = 70MM KEY = 50 KEYS PER M2

B2 = 70MM KEY = 25 KEYS PER M2



## RD118 – 210MM PER PANEL



### RD118 – 210MM PANEL – 23 PANELS PER M2

A = 100MM X 70MM TRIANGLE = 92 TRIANGLES PER M2

B = 100MM X 70MM TRIANGLE = 184 TRIANGLES PER M2

A1 = 70MM KEY = 23 KEYS PER M2

A2 = 100MM TILE = 23 TILES PER M2

## RD119 – 200MM PER PANEL



### RD119 – 200MM PER PANEL – 25 PANELS PER M2

A = 100MM X 70MM TRIANGLE = 200 TRIANGLES PER M2

B = 100MM X 70MM TRIANGLE = 200 TRIANGLES PER M2

## RD120 – 200MM PANEL



### RD120 – 200MM PANEL – 25 PANELS PER M2

A = 100MM TILE = 50 TILES PER M2

B = 70MM X 50MM TRIANGLE = 200 TRIANGLES PER M2

C = 70MM KEY = 50 KEYS PER M2

## RD121 – 210MM PANEL



### RD121 – 210MM PANEL – 23 PANELS PER M2

A = 70MM KEY = 23 KEYS PER M2

B = 140MM X 70MM STRIP = 46 STRIPS

C = 100MM X 70MM TRIANGLE = 92 TRIANGLES

D = 70MM X 50MM TRIANGLE = 92 TRIANGLES

E = 50MM X 35MM TRIANGLE = 92 TRIANGLES

F = 50MM KEY = 23 KEYS



## RD122 – 275MM PANEL



### RD122 – 275MM PANEL – 13 PANELS PER M2

A = 75MM KEY = 13 KEYS

B = 25MM X 200MM STRIP = 52 STRIPS

C = 25MM X 200MM STRIP = 26 STRIPS

C1 = 100MM X 70MM TRIANGLE = 92 TRIANGLES

D = 50MM KEY = 92 KEYS

E = 70MM X 50MM TRIANGLE = 184 TRIANGLES

F = 50MM X 35MM TRIANGLE = 92 TRIANGLES

G = 50MM KEY = 23 KEYS

## RD123 – 250MM PANEL



### RD123 – 250MM PANEL – 16 PANELS PER M2

A = 50MM KEY = 16 KEYS PER M2

B = 50MM X 35MM TRIANGLE = 64 TRIANGLES PER M2

C = 50MM X 35MM TRIANGLE = 128 TRIANGLES PER M2

D = 50MM X 35MM TRIANGLE = 64 TRIANGLES PER M2

E = 100MM X 50MM STRIP = 32 STRIPS PER M2

F = 70MM X 50MM TRIANGLE = 64 TRIANGLES PER M2

G = 200MM TILE C/C @ 70MM = 16 TILES PER M2

H = 70/50MM KEY (DEPENDING ON SELECTION) = 16 KEYS PER M2

I = 50MM X 35MM TRIANGLE = 64 TRIANGLES PER M2

**\*\* IF 70MM KEY REQUIRED PUT "I" AS THE SAME COLOUR AS "H" \*\***

## RD124 – HEXAGONS



### RD124 – HEXAGONS – 24 ELEMENTS PER M2

A = 8 PIECES PER M2

B = 8 PIECES PER M2

C = 8 PIECES PER M2

## **RD125 – 150MM TILE C/C @ 70MM WITH DESIGN 70MM KEY**



### **RD125 – 150MM TILE C/C @ 70MM WITH DESIGN 70MM KEY – 45 TILES AND KEYS PER M2**

A = 150MM TILE = 22.5 TILES PER M2

B = 150MM TILE = 22.5 TILES PER M2

C = 50MM KEY = 45 KEYS PER M2

D = 50MM X 35MM TRIANGLE = 180 TRIANGLES



## RD101 – 70mm – 280MM PANEL



### RD101 -70mm – 280MM PANEL – 13 PANELS PER M2

A = 70MM KEY – 13 KEYS PER M2

B = 210MM X 70MM STRIP – 26 STRIPS PER M2

C = 70MM KEY – 52 KEYS PER M2

D = 70MM X 50MM TRIANGLE – 104 TRIANGLES PER M2

E = 70MM X 50MM TRIANGLE – 52 TRIANGLES PER M2

F = 70MM X 50MM TRIANGLE – 52 TRIANGLES PER M2

G = 70MM KEY – 70 KEYS PER M2

# BORDERS



RDB201 – Dimensions 1000mm x 60mm



RDB202 – Dimensions 1000mm x 110mm



RDB203 – Dimensions 1000mm x 110mm



RDB204 – Dimensions 1000mm x 115mm



RDB205 – Dimensions 1010mm x 93mm (corner piece available)



RDB206 – Dimensions 1050mm x 160mm

## BORDERS



RDB207 – Dimensions 1000mm x 120mm



RDB208 – Dimensions 1050mm x 90mm



RDB209 – Dimensions 1000mm x 90mm



RDB210 – Dimensions 1000mm x 100mm (corner piece available)



RDB211 – Dimensions 1000mm x 65mm



**Photos by:**

**Unique Imaging**

**w: [www.uniqueimaging.co.uk](http://www.uniqueimaging.co.uk)**

**e: [enquiries@uniqueimaging.co.uk](mailto:enquiries@uniqueimaging.co.uk)**

**Please contact us for your local  
supplier and installer**

**tel: 020 8558 4725**

**fax: 020 8539 7050**

**e-mail: [enquiries@de-bruyn.co.uk](mailto:enquiries@de-bruyn.co.uk)**