



siegling prolink
modular belts

Product data label

ASSEMBLY / DISASSEMBLY

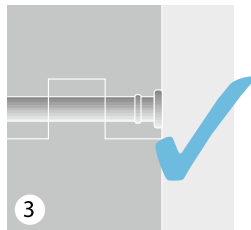
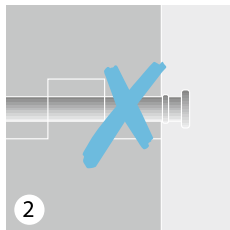
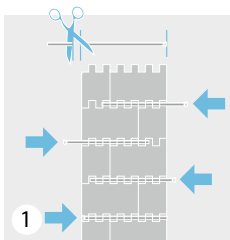
Series 1, 2, 3, 4.1, 8



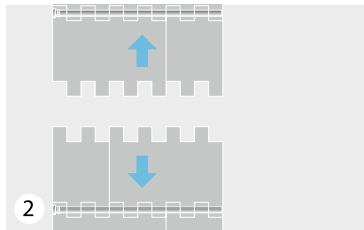
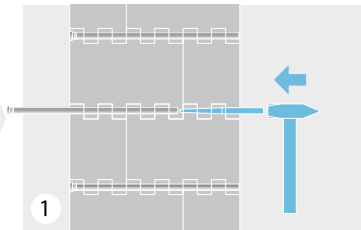
siegling prolink
modular belts



Assembly
Montage
Montage
Montaje



Disassembly
Demontage
Démontage
Desmontaje



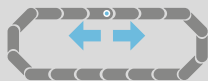
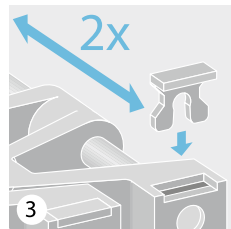
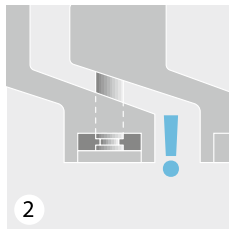
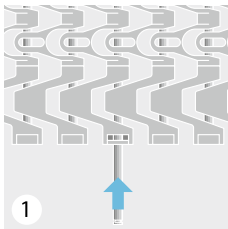
Series 5



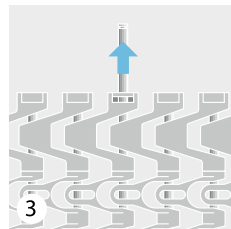
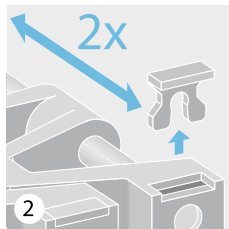
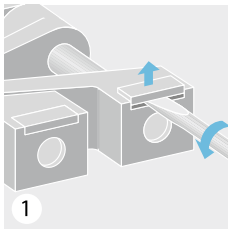
siegling prolink
modular belts



Assembly
Montage
Montage
Montaje



Disassembly
Demontage
Démontage
Desmontaje



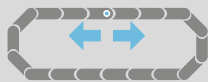
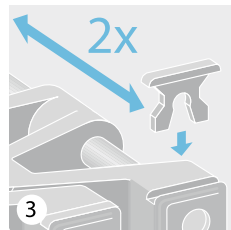
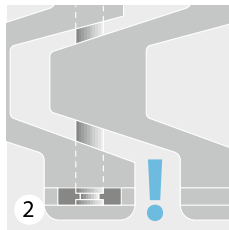
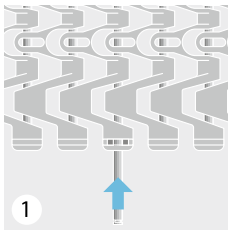
Series 5 ST



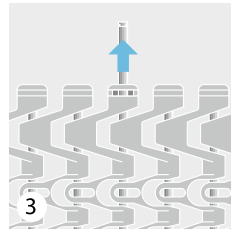
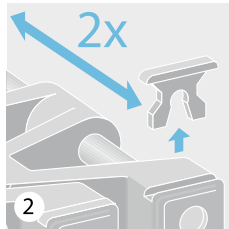
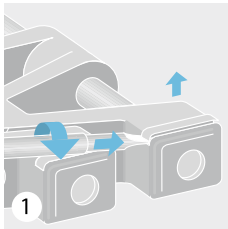
siegling prolink
modular belts



Assembly
Montage
Montage
Montaje



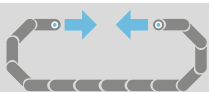
Disassembly
Demontage
Démontage
Desmontaje



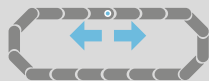
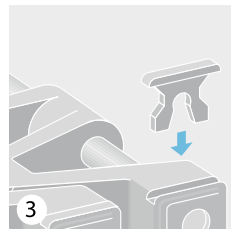
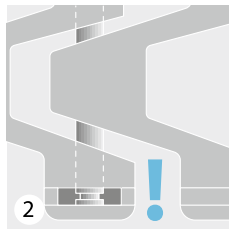
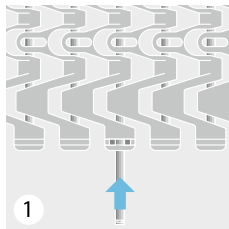
Combo belts (S5 ST & S11)



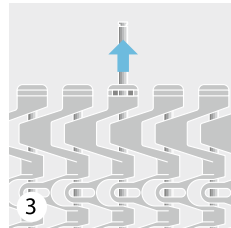
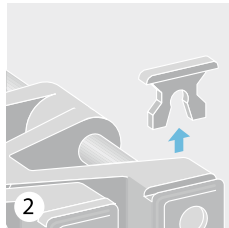
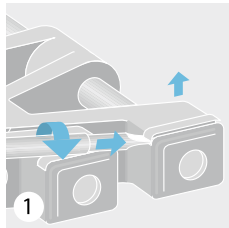
siegling prolink
modular belts



Assembly
Montage
Montage
Montaje



Disassembly
Demontage
Démontage
Desmontaje



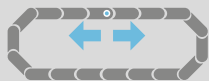
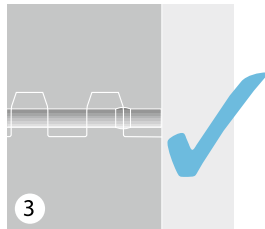
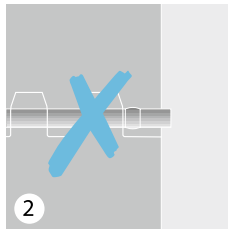
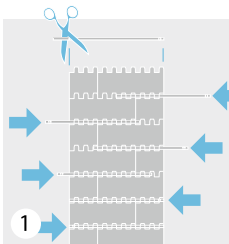
Series 6.1, 10, 13



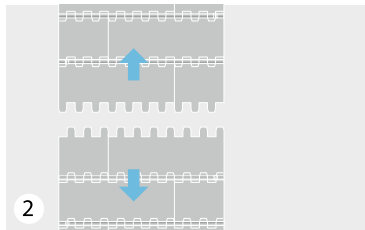
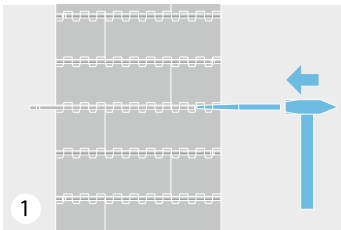
siegling prolink
modular belts



Assembly
Montage
Montage
Montaje



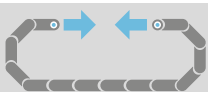
Disassembly
Demontage
Démontage
Desmontaje



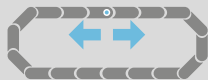
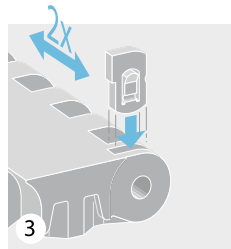
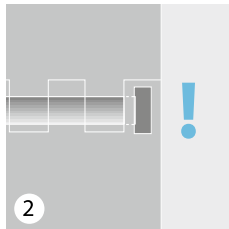
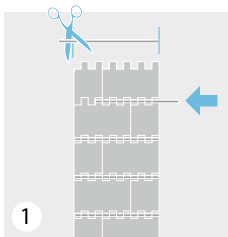
Series 7



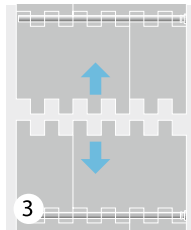
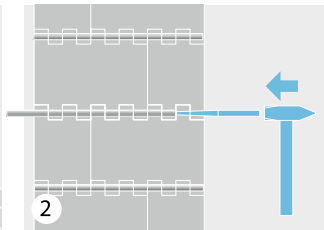
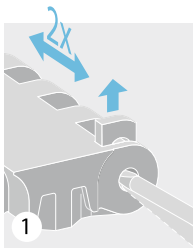
siegling prolink
modular belts



Assembly
Montage
Montage
Montaje



Disassembly
Demontage
Démontage
Desmontaje



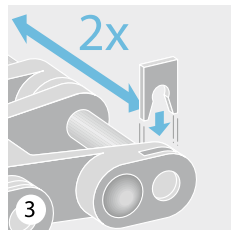
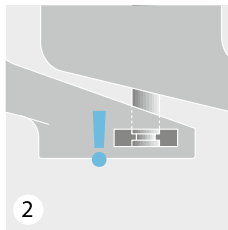
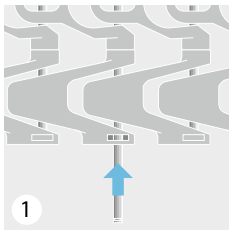
Series 9



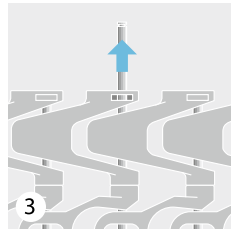
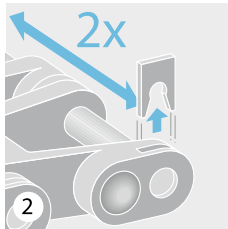
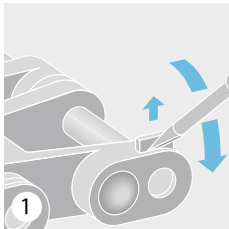
siegling prolink
modular belts



Assembly
Montage
Montage
Montaje



Disassembly
Demontage
Démontage
Desmontaje



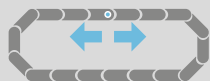
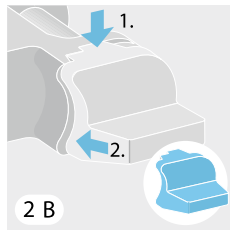
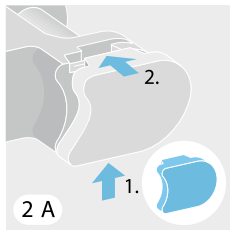
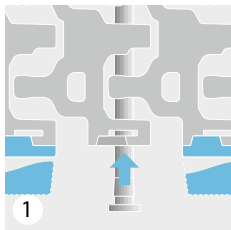
Series 11



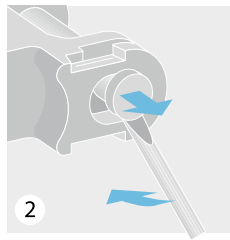
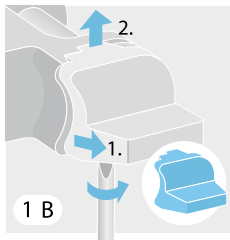
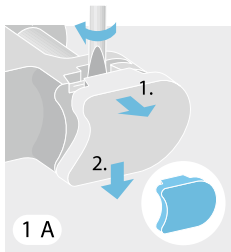
siegling prolink
modular belts



Assembly
Montage
Montage
Montaje



Disassembly
Demontage
Démontage
Desmontaje



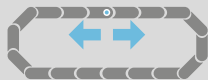
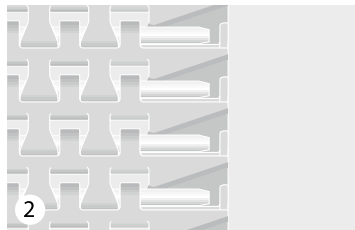
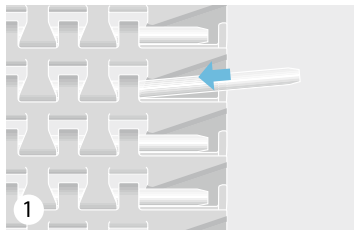
Series 14 (A)



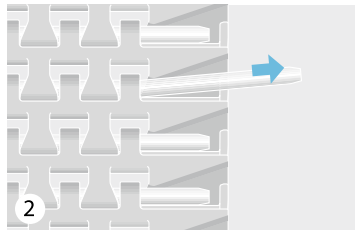
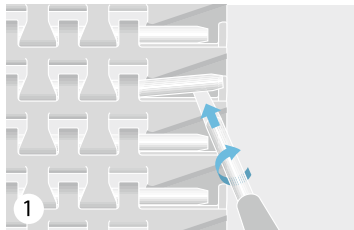
siegling prolink
modular belts



Assembly
Montage
Montage
Montaje



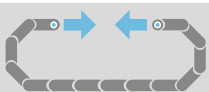
Disassembly
Demontage
Démontage
Desmontaje



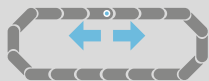
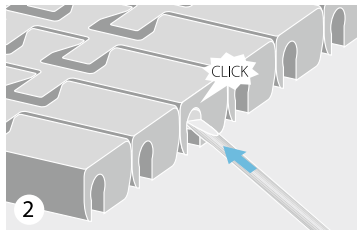
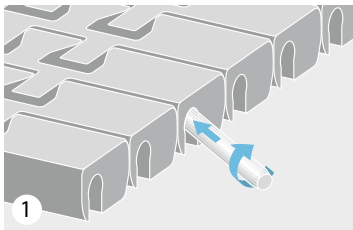
Series 14 (B)



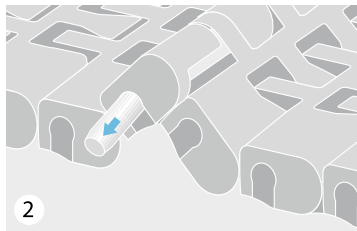
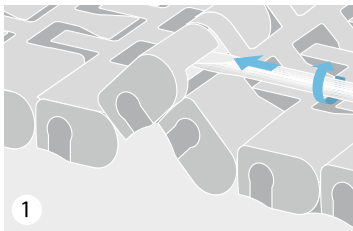
siegling prolink
modular belts

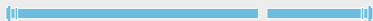


Assembly
Montage
Montage
Montaje



Disassembly
Demontage
Démontage
Desmontaje



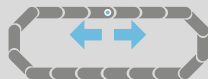
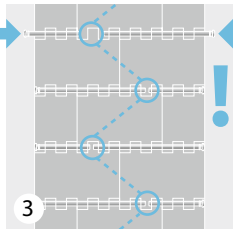
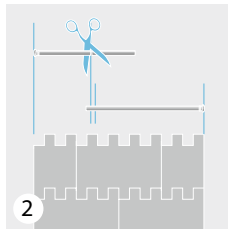
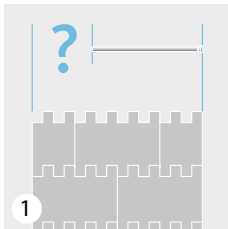


siegling prolink

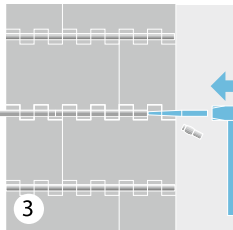
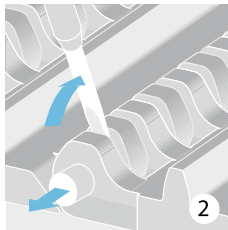
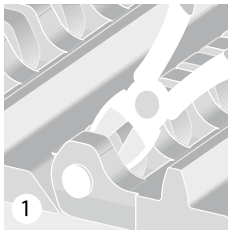
modular belts



Assembly
Montage
Montage
Montaje



Disassembly
Demontage
Démontage
Desmontaje



Siegling – total belting solutions

Forbo Siegling GmbH

Lilienthalstraße 6/8, D-30179 Hannover

Phone +49 511 6704 0, Fax +49 511 6704 305

www.forbo-siegling.com, siegling@forbo.com



MOVEMENT SYSTEMS

Ref. no. 417-0

08/17 · UD · Reproduction of text or parts thereof only with our approval. Subject to change.