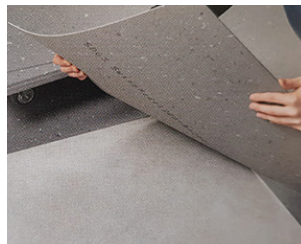
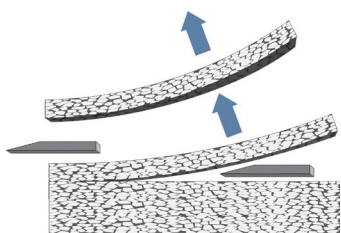
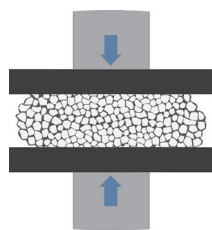
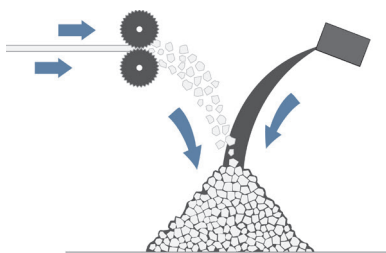


colorex® SD | EC

GLUE DOWN

- Density of Colorex is extremely dense more than any other floor covering
- Very low plasticizer content 10% vs the competition that uses 20%-30%.
- Will not shrink like other vinyl – especially when heat welded
- Stain resistant – Excellent against acids and high alkali – large list of chemicals
- Wax Never Used – Can be 100% restored dry-buffing
- 20-year Warranty
- Life-Time Conductivity Warranty
- Conductivity Certificate of Each Batch
- 1,500 lbs. PSI (Static Load ASTM F-970)
- 10 Colors of Both SD & EC Tile Stocked
- Repairable
- Heat Weldable
- Flash Coveable – Integral Base
- Floating option for 100% moisture or loose lay applications
- ISO Certified to Level 2 Cleanroom

UNIQUE MANUFACTURING UNLIKE ANY OTHER

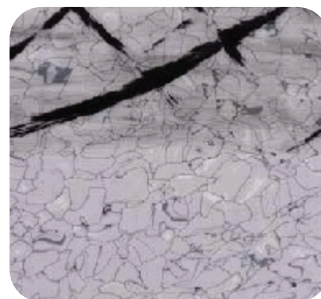


colorex® plus EC

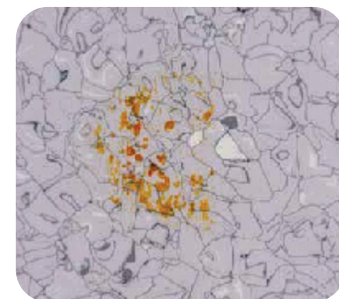
FLOATING INTERLOCKING

- Floating, interlocking tile – Injection molded/fused to the backing, will never de-laminate
- Colorex Plus in lieu of moisture mitigation saves money in most cases. Huge problem solver
- The installation is simple and can go over a lot that glue-down floors cannot go over such as contaminated concrete, high moisture concrete, failed epoxy, existing raised floor, ASR (contaminated) concrete and others
- Colorex Plus installs very quickly utilizing only a rubber hammer and a saw for VERY minimal disruption, IMMEDIATE OCCUPANCY/ROLLING LOADS
- Colorex Plus is by far the highest quality floating ESD floor on the market and its not even close. The backing is injection-molded to the tile so it will never delaminate and is the strongest of any floating floor, not to mention being ESD safe!

SUITABLE FOR THE MOST DEMANDING APPLICATIONS



Heavy soiling on the floor can be fully cleaned.



Stubborn stains left by iodine based substances can be fully removed.



A piece of Colorex can be used for a seamless repair.



Marks from burns or stains can be fully removed.

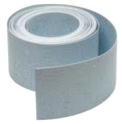
creating better environments

1-800-842-7839 | www.forboflooringNA.com | email: info.na@forbo.com

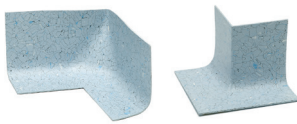
forbo

FLOORING SYSTEMS

colorex® GENERAL ACCESSORIES



COLOREX SKIRTING STRIPE
Dimension Length: 12 m
Height: 150 mm
Shipping unit 2 piece/carton
Article 1600 xx



COLOREX INNER/OUTER CORNER
Dimension Length: 50 m
Height: 100 mm
Radius: 20 mm
Shipping unit 1 piece
Article 1700 xx (inner) 1800 xx (outer)



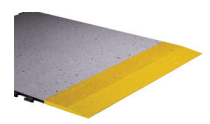
COLOREX WELDING ROD
Dimension Diameter: 4 mm
Length: 100 mm
Shipping unit 1 coil
Article 1509 xx



COLOREX UNDERLAY PROFILE
Dimension 20 x 20 mm
Radius: 20 mm
Length: 25 m
Shipping unit 2 piece/carton
Article 1500 00



COLOREX PLUS UNDERLAY PROFILE
Dimension 50 x 20 x 8 mm
Radius: 20 mm
Length: 1.22 m
Shipping unit 1 piece
Article X1197



COLOREX PLUS RAMP
Dimension 1220 x 150 mm
Shipping unit 1 piece
Article 171500 (solid grey)
171531 (yellow)



Scientists working in a laboratory featuring Colorex Colorex SD150201 | everest



Colorex Plus Interlocking installed over access panels.



Technician working in the pharmaceutical production line Colorex SD150225 | kiwi & SD150201 | everest

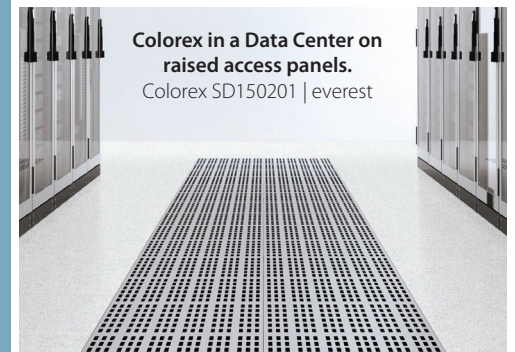


Colorex Plus Interlocking being installed.

Life-Science & Pharmaceutical

Colorex meets the strictest cleanroom standards for conductivity, outgassing, and particle emissions. It is compliant up to ISO Class 2 and GMP Class A, suitable for pharmaceutical sterile manufacturing environments.

Customers Include:
Merck, Pfizer, Patheon, TEVA, KRKA, Polpharma Group, & Novo Nordisk



Colorex in a Data Center on raised access panels. Colorex SD150201 | everest

Automotive & Industrial

Colorex is an ideal choice for automotive manufacturers needing high quality, electro-conductive or static-dissipative flooring. It is also visually appealing and enhances any commercial space, from scientific facilities to high industrial manufacturing and assembly environments.

Trusted by industry leaders:
Siemens, Bosch, Audi, Hella, Continental, Porsche, ASK, Nexteer Automotive, & TRW.



Colorex is used in electronic assembly lines. Colorex SD150205 | adula, SD150201 | everest, & Colorex SD signal SD150237 | amazonas

Data Centers & Healthcare

Data Centers
On raised access panels or with Colorex EC Plus Floating-Interlocking Tile

Healthcare
Ideal for raised access panels, operating rooms, MRI's linear accelerators, surgical sterilization, and labs. Ensures safety, cleanliness, and static control in sensitive environments.

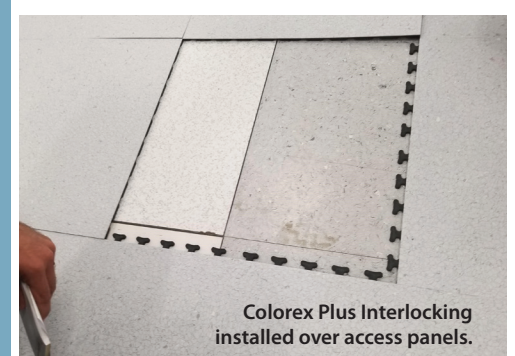


Colorex flooring is used in automotive assembly lines. Colorex SD150207 | quartz

Electronics Industry

Colorex is an advanced technical flooring system designed to control static discharge in ESD-sensitive areas. It is commonly used in cleanrooms, manufacturing, and assembly environments within the electronics industry.

Trusted by industry leaders:
Intel, Seagate, TSMC, Apple, Facebook, Micron, Applied Materials, & SnapChat.



Colorex Plus Interlocking installed over access panels.

creating better environments

1-800-842-7839 | www.forboflooringNA.com | email: info.na@forbo.com



FLOORING SYSTEMS