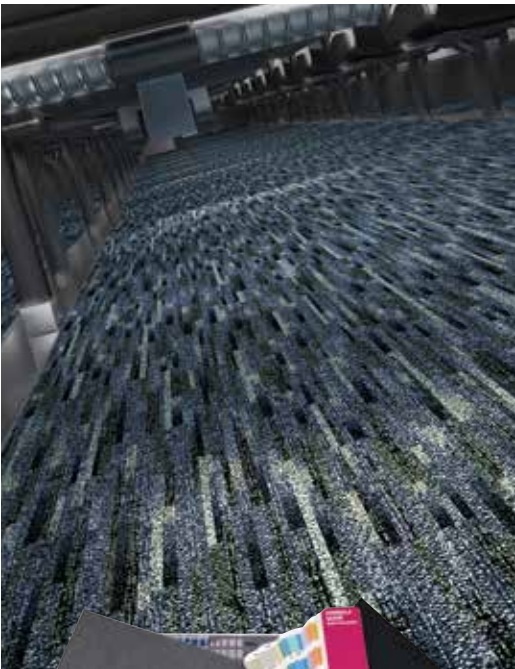
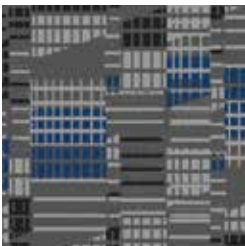
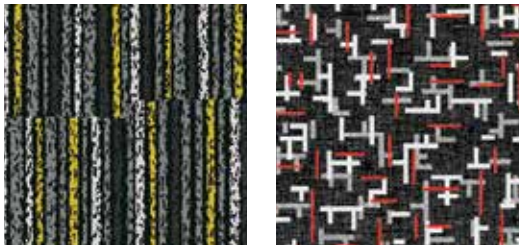




# coral<sup>®</sup> move vision FR

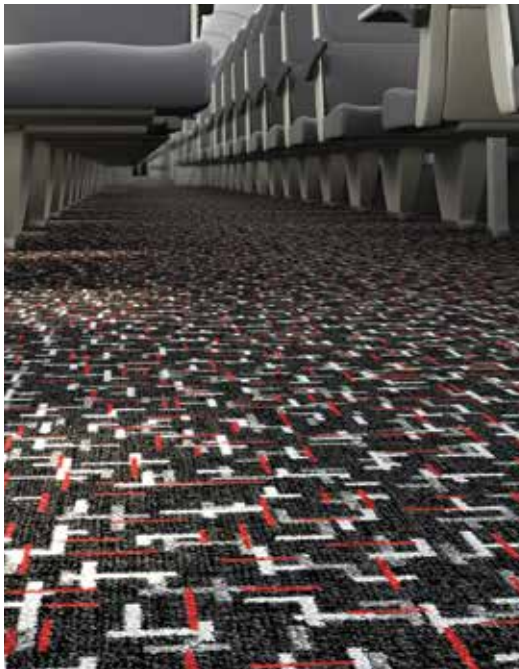
## DESIGN FREEDOM

Whilst offering the same technical characteristics as Coral Move FR, Coral Move Vision FR uses a digital printing process. This allows for far greater customisation possibilities in terms of design and colour.



The digital printing process makes non-linear type designs possible, is perfect for more complicated designs or when there are many different colourways within a design. Pantone and RAL colours can be matched.

You can work with our dedicated design team on an individual project basis to ensure that the resulting Coral Move Vision FR carpet meets your precise design and colour requirements.



**ECONYL<sup>®</sup>**  
Made with 100% Regenerated Nylon

Description	Tufted cut pile carpet	
Dimensions	EN-ISO 24341	Roll width 185cm Roll length ≤ 27.5m
Total thickness	ISO 1765	8.0mm ± 10%
Pile weight	ISO 8543	750 gram/m <sup>2</sup>
Yarn	100% polyamide BCF ECONYL <sup>®</sup>	
Area of use	Heavy Use	
Impact noise reduction	EN-ISO 717-2	ΔLw = 28 dB
Tested flammability standard	EN 45545-2	HL3*
Slip resistance	EN 13893	μ ≥ 0.30
Body voltage	ISO 6356	< 2 kV
Thermal resistance	ISO 8302	0.108 m <sup>2</sup> K/W

\*EN45545-2 testing has been carried out on various different substrates. This is the highest achieved result. Please ask for a full overview of specific results on different substrates by emailing [transport@forbo.com](mailto:transport@forbo.com)  
Please note: Digital representations may vary from actual product. Please order a physical sample to see the full effect by emailing: [transport@forbo.com](mailto:transport@forbo.com)  
Full technical specifications are available on page 72.





CORAL MOVE VISION FR OFFERS REAL **DESIGN FREEDOM**

CORAL MOVE VISION FR – **CUSTOM DESIGN SERVICE**

Create your own masterpiece using our custom design service alongside our digital printing technology. Our experienced designers can help at any stage in the design process, depending on what involvement you require.

If you are looking for design ideas, re-colouration of existing designs or help with the development of a unique design that works perfectly with your rail interior design scheme, then we have the resource to help.

STEPS IN THE **CUSTOM DESIGN PROCESS:**

