



flotex[®] colour | advance

A UNIQUE
**TEXTILE FLOOR
COVERING**

creating better environments

forbo

FLOORING SYSTEMS



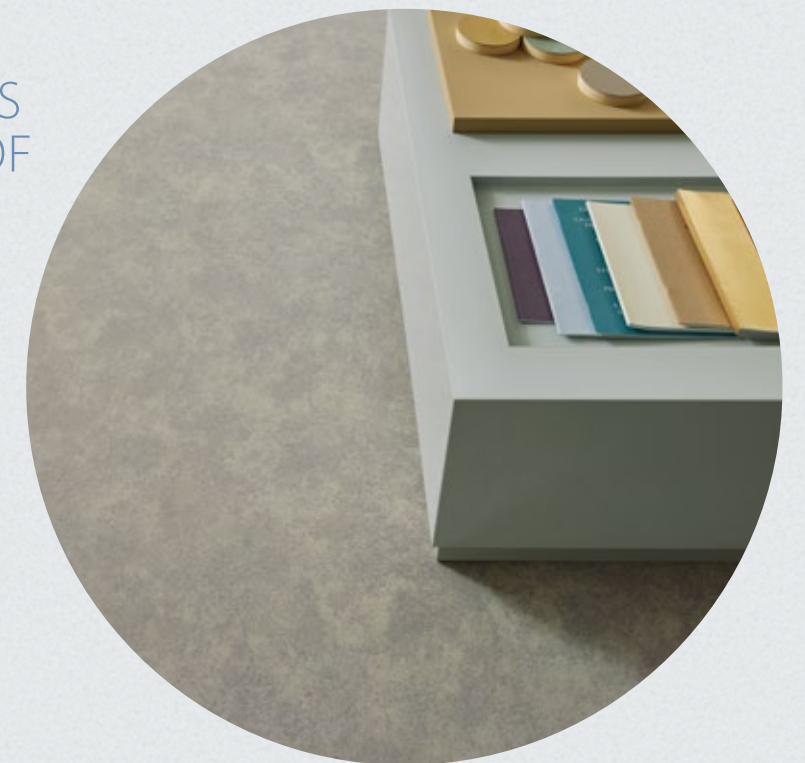
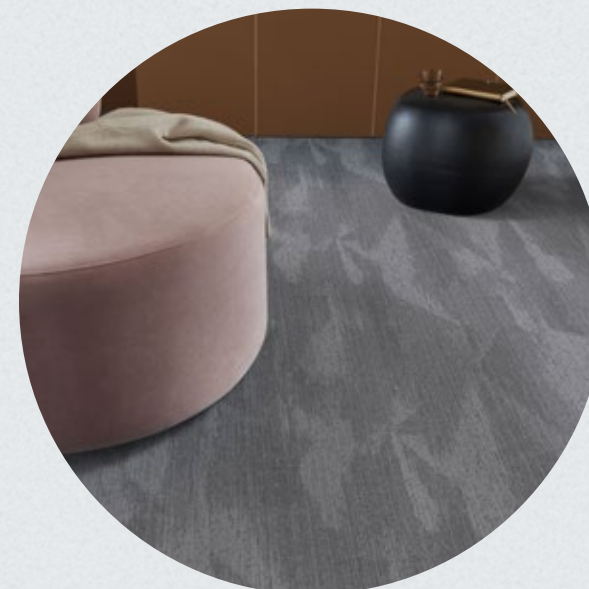
flotex® colour | advance


STYLISH AND PRACTICAL FLOCKED FLOOR COVERING

Flotex is a unique textile floor covering that combines the hard wearing and durable characteristics of a resilient floor with the quality, warmth and comfort of a carpet. Flotex is a strong and hygienic floor, and being completely waterproof, it is also the only truly washable textile floor.

Flotex flocked flooring is the only textile floor covering to be awarded the prestigious Allergy UK Seal of Approval™. Because of its highly dense pile, twice as many allergens are trapped in Flotex's nylon fibers and released upon vacuuming in comparison to conventional carpet. The first textile to be approved by Allergy UK, this unique flocked floor covering is proven to positively impact on the lives of allergy sufferers.

FLOTEX IS A STRONG AND
HYGIENIC FLOOR WHICH IS
COMPLETELY WATERPROOF





flotex[®] colour pinang

Flotex Penang offers a stunning look for any modern environment. Its hint of the wood grain design provides a quiet, neutral floor design.

Penang s482005 | smoke



flotex[®] colour metro

Flotex Metro is a versatile semi-plain design which covers a wide and modern color range. The understated pattern conveys texture without definite form, creating an authentic feel that is unique to Flotex.

Metro s246005 | nimbus

flotex[®] colour calgary

Flotex Calgary offers a choice of colors in a soft, natural design that can easily be combined with other complementary Flotex or resilient ranges. Flotex Calgary is the perfect choice for application areas that require a muted ambiance.

Calgary s290019 | carbon

Metro s246028 | jade Metro s246032 | petrol



flotex® advance latitude

Offering a calm yet sophisticated aesthetic look, the inspiration for Latitude comes from the transient elements of free-flowing water. Detailing subtle gradients of light and dark the design maintains a fluidity creating modern and effortless comfort to any space.

Latitude s202037 | grey

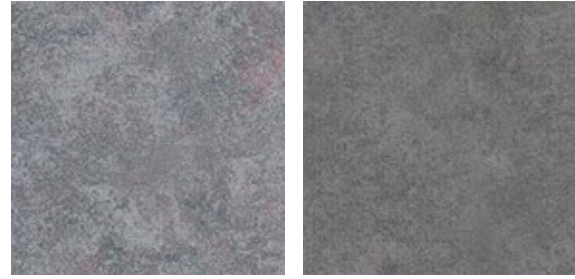


flotex® advance code

Code pays homage to the creativity of the office worker offering a connection to the art of the typewriter, used by many as a means to produce inspirational and innovative design. The interplay of letters and characters layer and overlay to form a unique and abstract pattern.

Code s203037 | grey

flotex® colour



calgary | carbon LRV 18% s290019 t590019
calgary | cement LRV 13% s290012 t590012



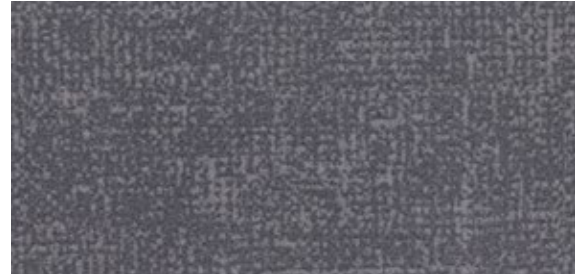
s482005 | penang smoke s482031 | penang ash



calgary | quartz LRV 28% s290011 t590011



calgary | linen LRV 18% s290026 t590026



metro | nimbus LRV 13% s246005 t546005



penang | mercury LRV 10% s482004 t382004



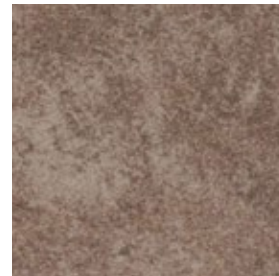
penang | smoke LRV 14% s482005 t382005



penang | nimbus LRV 14% s482017 t382017



penang | zinc LRV 9% s482007 t382007



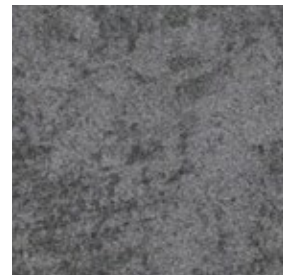
calgary | espresso LRV 15% s290023 t590023



penang | grey LRV 10% s482037 t382037



metro | grey LRV 8% s246006 t546006



calgary | grey LRV 8% s290002 t590002



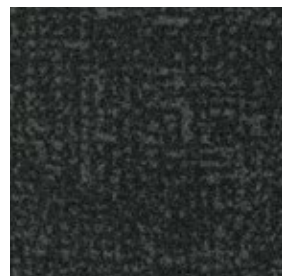
penang | shale LRV 10% s482020 t382020



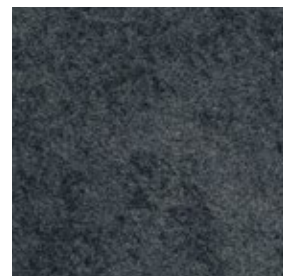
metro | anthracite LRV 3% s246008 t546008



penang | anthracite LRV 3% s482001 t382001



metro | ash LRV 4% s246007 t546007

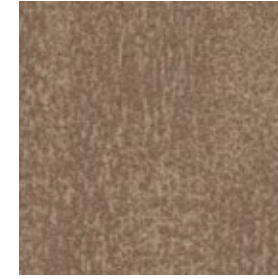


calgary | ash LRV 4% s290010 t590010

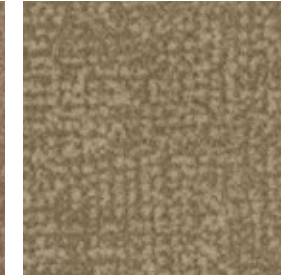


penang | ash LRV 5% s482031 t382031

flotex® colour



penang | bamboo LRV 21% s482018 t382018



metro | sand LRV 18% s246012 t546012



s246011 | metro pebble s246017 | metro berry



calgary | sahara LRV 29% s290006 t590006



penang | flax LRV 15% s482075 t382075



metro | gold LRV 29% s246036 t546036



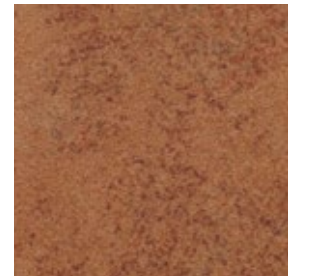
metro | pebble LRV 14% s246011 t546011



penang | beige LRV 12% s482015 t382015



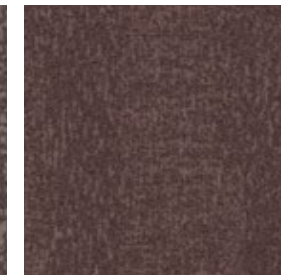
penang | coral LRV 16% s482016 t382016



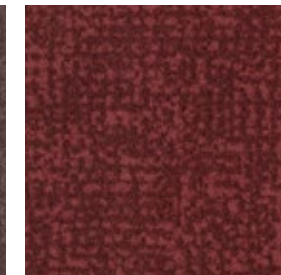
calgary | melon LRV 10% s290005 t590005



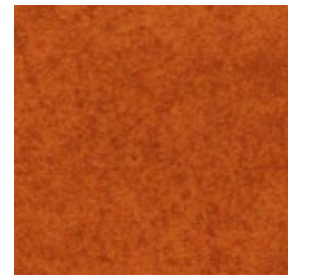
metro | pepper LRV 9% s246009 t546009



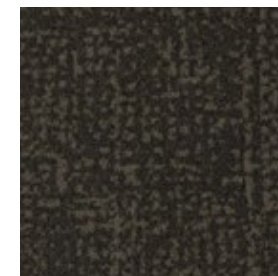
penang | dusk LRV 8% s482023 t382023



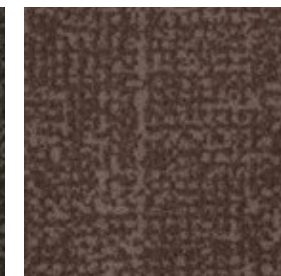
metro | berry LRV 5% s246017 t546017



calgary | fire LRV 11% s290024 t590024



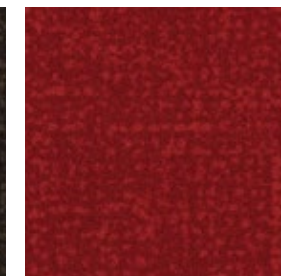
metro | concrete LRV 4% s246014 t546014



metro | cocoa LRV 7% s246015 t546015



metro | chocolate LRV 3% s246010 t546010



metro | red LRV 9% s246026 t546026



metro | tangerine LRV 17% s246025 t546025

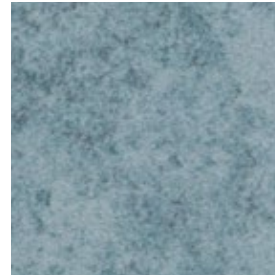
flotex® colour



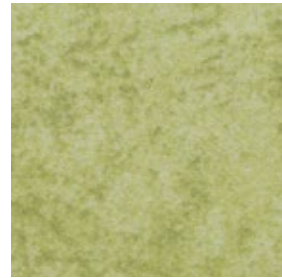
penang | sage LRV 35%
s482006 t382006



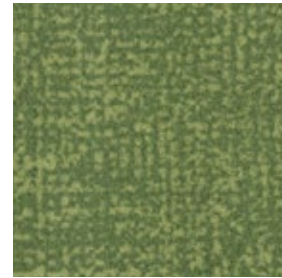
s246018 | metro mineral



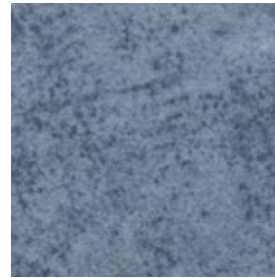
calgary | aqua LRV 29%
s290021 t590021



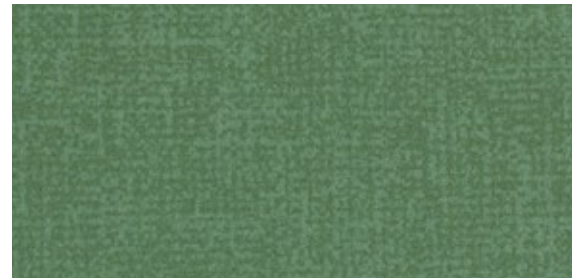
calgary | lime LRV 36%
s290014 t590014



metro | citrus LRV 18%
s246019 t546019



calgary | riviera LRV 16%
s290025 t590025



metro | apple LRV 15%
s246037 t546037



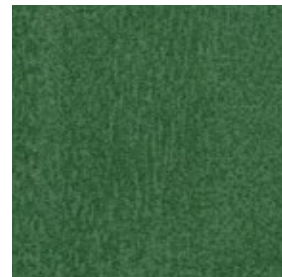
calgary | menthol LRV 17%
s290004 t590004



metro | mineral LRV 15%
s246018 t546018



metro | gull LRV 11%
s246004 t546004



penang | evergreen LRV 7%
s482010 t382010



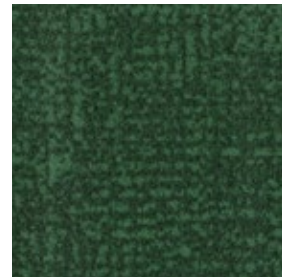
calgary | moss LRV 13%
s290009 t590009



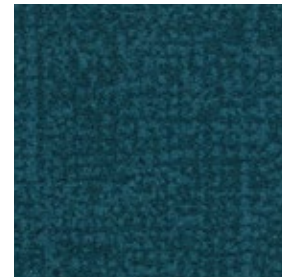
metro | jade LRV 7%
s246028 t546028



metro | tempest LRV 7%
s246002 t546002



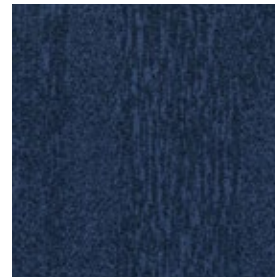
metro | evergreen LRV 6%
s246022 t546022



metro | petrol LRV 4%
s246032 t546032

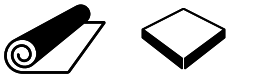


metro | carbon LRV 5%
s246024 t546024

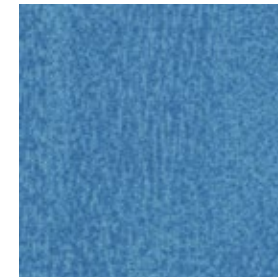


penang | azure LRV 4%
s482116 t382116

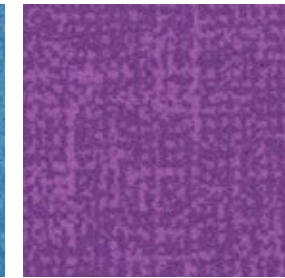
flotex® colour



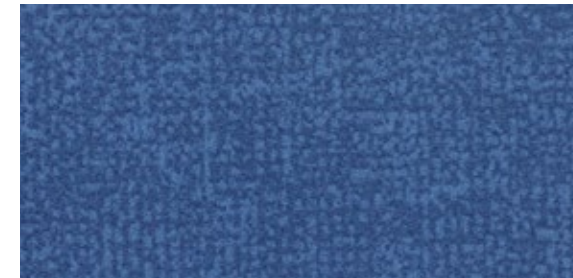
calgary | sky LRV 15%
s290001 t590001



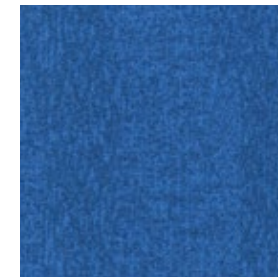
penang | sapphire LRV 17%
s482011 t382011



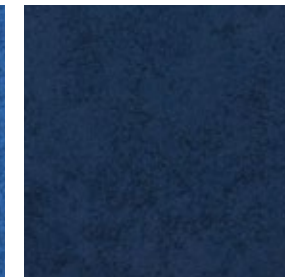
metro | lilac LRV 9%
s246034 t546034



metro | lagoon LRV 10%
s246020 t546020



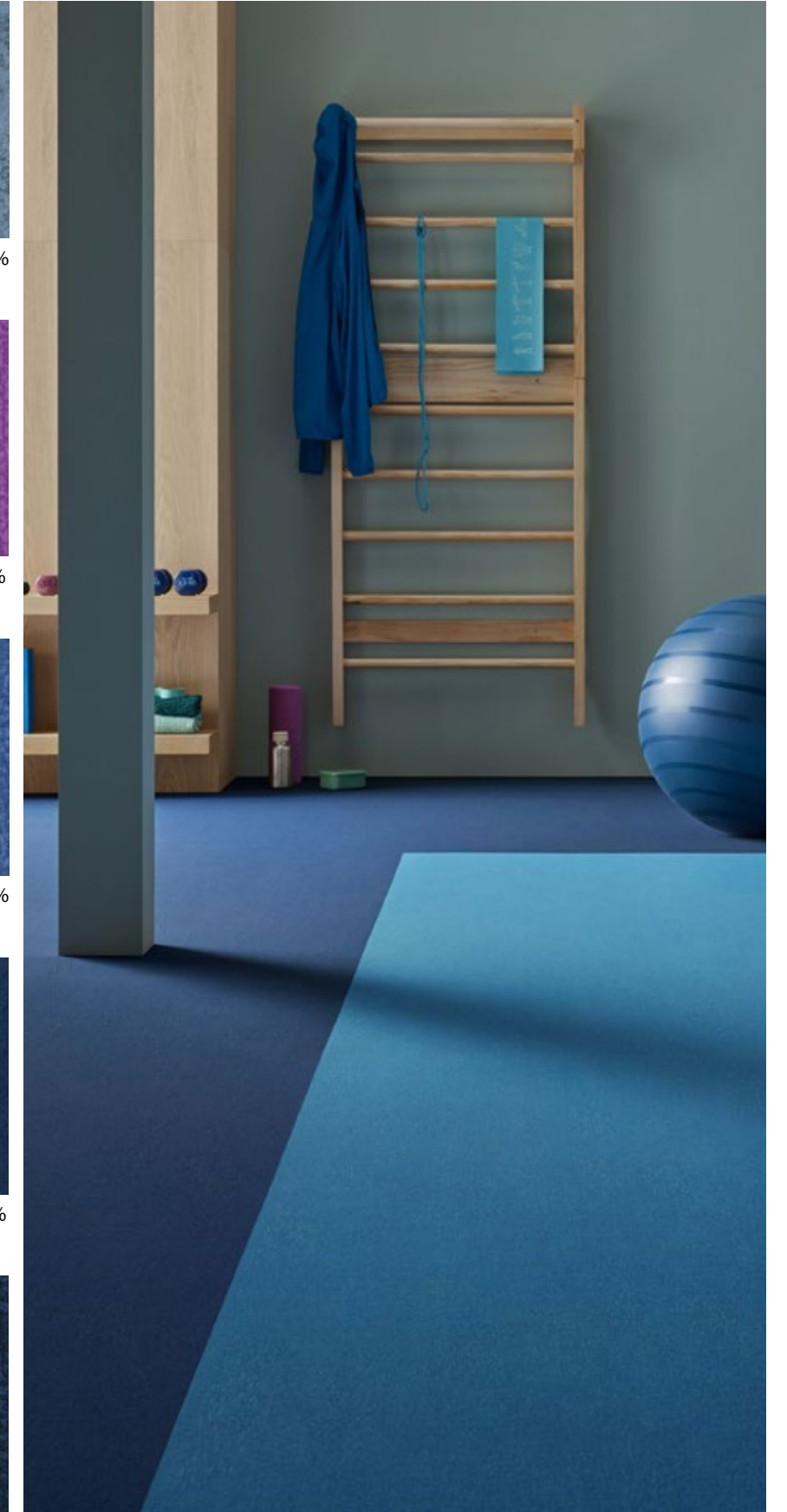
penang | neptune LRV 10%
s482026 t382026



calgary | azure LRV 4%
s290015 t590015

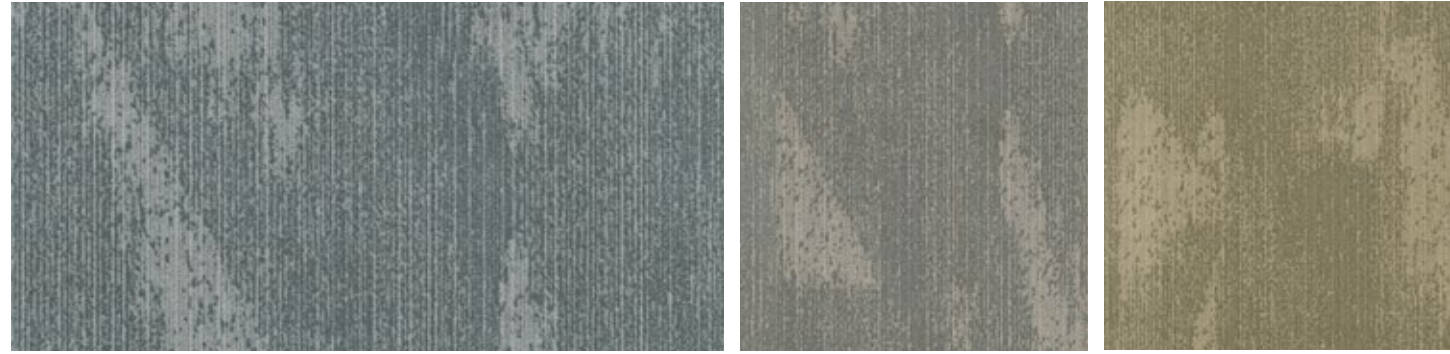


metro | indigo LRV 3%
s246001 t546001

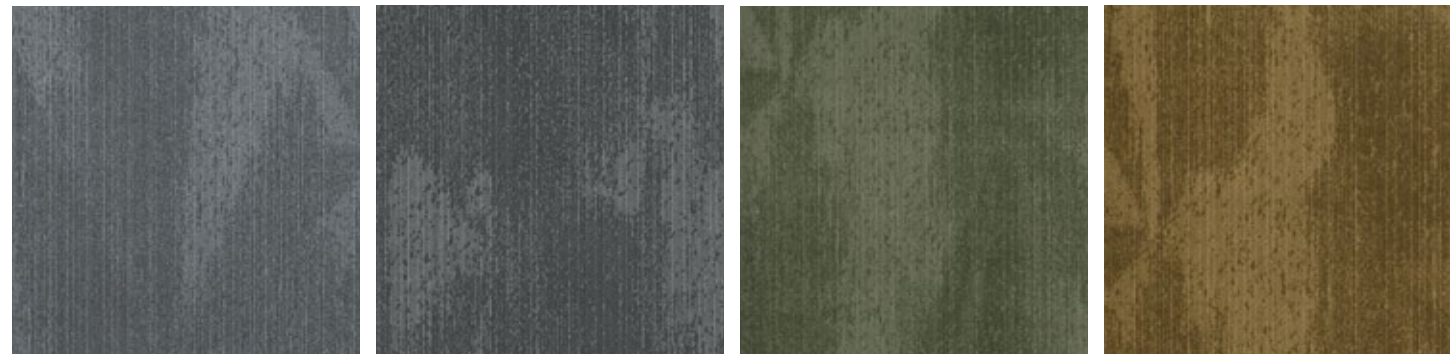


s482116 | penang azure **s482011** | penang sapphire

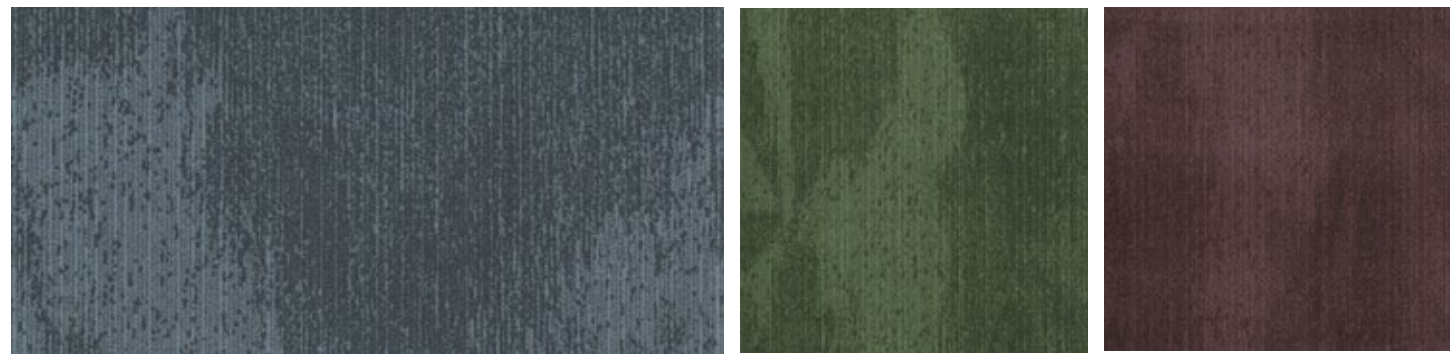
flotex® latitude



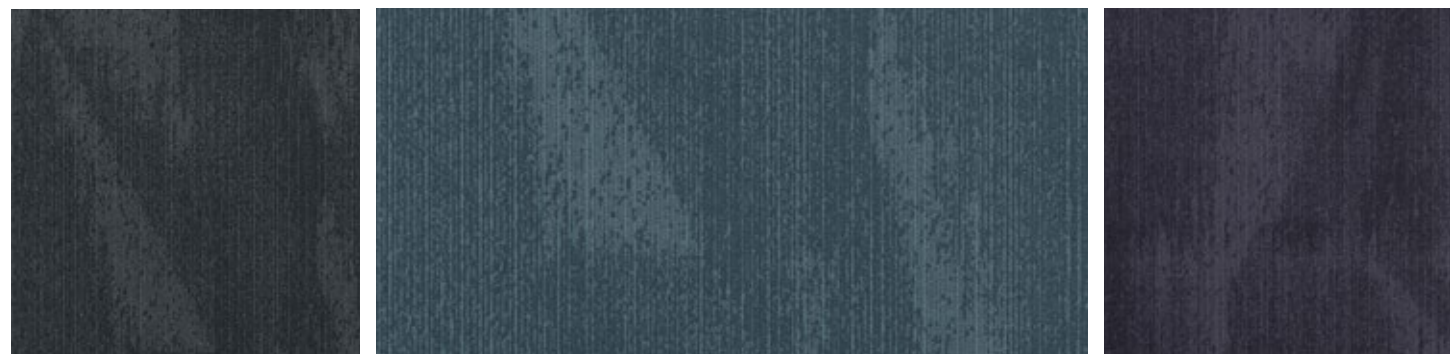
latitude | nickel LRV 22% latitude | linen LRV 17% latitude | sand LRV 20%
s202018 t302018 s202049 t302049 s202077 t302077



latitude | grey LRV 7% latitude | nimbus LRV 9% latitude | juniper LRV 10% latitude | mustard LRV 12%
s202037 t302037 s202073 t302073 s202001 t302001 s202002 t302002



latitude | gull LRV 8% latitude | cypress LRV 9% latitude | claret LRV 6%
s202044 t302044 s202003 t302003 s202004 t302004

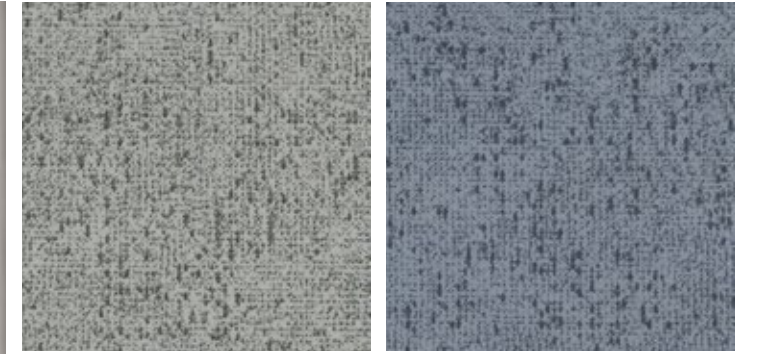


latitude | ash LRV 4% latitude | tempest LRV 5% latitude | thistle LRV 5%
s202031 t302031 s202110 t302110 s202005 t302005

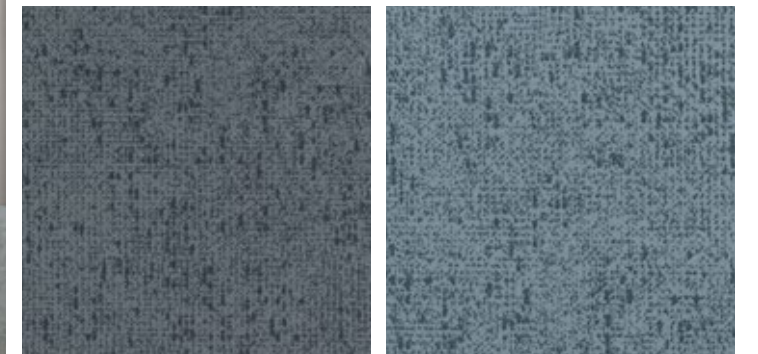
flotex® code



s203018 | code nickel s203002 | code pewter



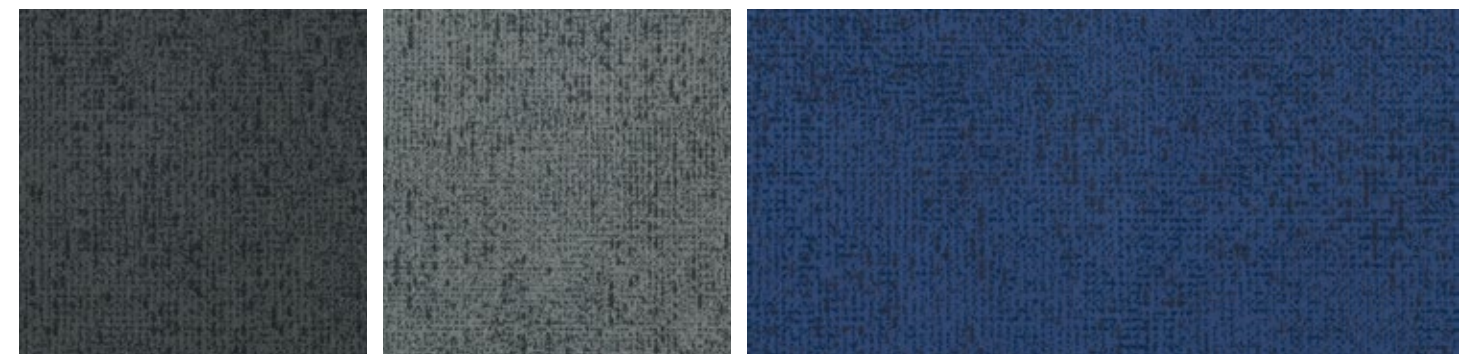
code | nickel LRV 26% code | ice LRV 20%
s203018 t303018 s203001 t303001



code | pewter LRV 14% code | gull LRV 13%
s203002 t303002 s203044 t303044

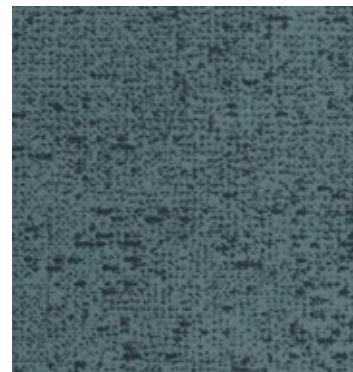


code | nimbus LRV 14% code | oxide LRV 10% code | cornflower LRV 8%
s203073 t303073 s203003 t303003 s203004 t303004



code | ash LRV 5% code | grey LRV 11% code | azure LRV 5%
s203031 t303031 s203037 t303037 s203116 t303116

flotex® code



code | tempest
s203110 t303110

LRV 9%



code | mineral
s203084 t303084

LRV 19%

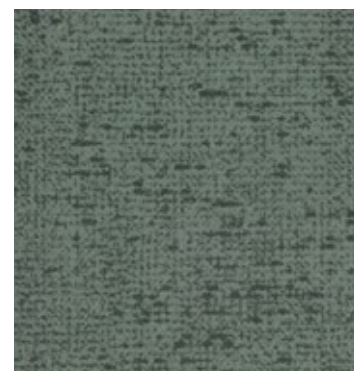


code | sand
s203077 t303077

LRV 26%



s203110 | code tempest



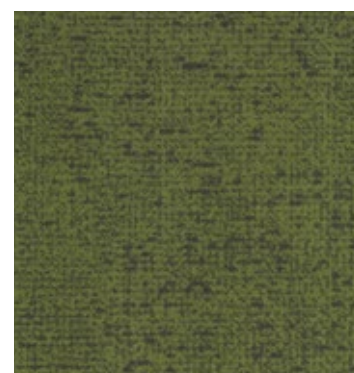
code | spearmint
s203005 t303005

LRV 15%



code | honey
s203006 t303006

LRV 19%



code | moss
s203087 t303087

LRV 10%



code | apricot
s203007 t303007

LRV 7%



code | carbon
s203080 t303080

LRV 7%



code | evergreen
s203088 t303088

LRV 7%



code | concrete
s203079 t303079

LRV 5%

flotex® code



code | pumice
s203009 t303009

LRV 16%



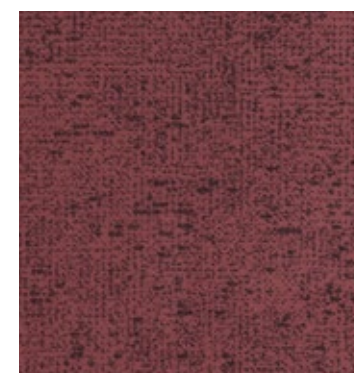
code | mauve
s203008 t303008

LRV 9%



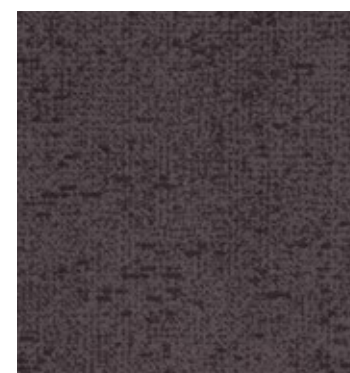
code | linen
s203049 t303049

LRV 23%



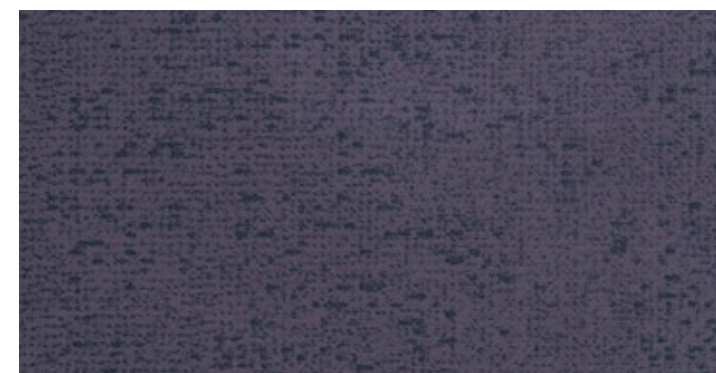
code | berry
s203083 t303083

LRV 7%



code | plum
s203010 t303010

LRV 7%



code | grape
s203082 t303082

LRV 7%



s203008 | code mauve s203049 | code linen



flotex[®] is...

Flotex releases up to 76% of original soil after vacuuming compared to 46% for loop pile carpet

LEED - Flotex tile has a recycled backing (52% Pre-consumer)

Slip Resistant Wet & Dry - Provides safety and minimizes liability from slips and falls

Acoustics - Sound Absorption (20dB) and Impact Sound Transmission (flooring/ceiling) of IIC 59 tile and IIC 57 sheet

Durable - 46,000 upright nylon 6,6 fibers per inch², resists crushing and matting

Easy to Clean - Our dense, upright fiber makes it easier to clean (no loops or twists to trap dirt)

Closed cell cushion backing - Comfortable/quiet warm under foot, and 100% impervious to water (waterproof)

Soil & Stain Resistant - Most spills can be removed, including permanent marker

Hygienic - Flotex is a supplement to, and not a substitute for, standard infection control practices, and has been shown to reduce microbial contamination based on Independent Laboratory Testing.

Improved indoor air quality - dirt and allergens are easily removed by vacuuming. Flotex is the only textile flooring material awarded the British Allergy Foundation's Seal of Approval. Does not contain harmful VOC's.

t302018 | latitude nickel t302001 | latitude juniper t302037 | latitude grey

s482006 | penang sage

s482020 | penang shale

s482005 | penang smoke

THE PILLARS OF OUR AMBITION

Three words are at the foundation of everything we do:

Transparency, circularity and renewability

PRODUCT DEVELOPMENT AND DESIGN (PRODUCT DEVELOPMENT WITH CIRCULARITY AND USERS IN MIND)

- Flotex is 100% phthalate free
- Fully transparent choices by using the EPD's which are 3rd party verified, using only 100% safe and traceable REACH compliant materials
- All Flotex products are manufactured with 100% green electricity and have very low product emissions that are below the industry average
- Flotex Colour and Advance ranges have no pattern repeats, reducing installation waste
- Flotex is the only textile covering approved by the British Allergy Foundation as it traps dust and allergens on the surface and releases them with a simple vacuum

SOURCING AND RAW MATERIALS (MAXIMIZING THE USE OF SUSTAINABLE AND RENEWABLE RAW MATERIALS)

- Maximized use of recycled content in all products, Flotex tiles & planks contain up to 59% recycled content and actual content is published in our EPD's
- Controlled supply chain certification -ISO 140001 and 9001 standards and SA8000 for ethical supply chain
- Use of recycled materials back to our own products, all our raw materials meet the strictest health requirements

PRODUCTION AND DISTRIBUTION (CARBON NEUTRAL AND ZERO WASTE PRODUCTION)

- Flotex production is dedicated to the concept of zero waste. 86% of factory waste is recycled
- Flotex is produced in an environment where substantial reductions of CO2 have been achieved and additional improvements are planned

- We have eliminated excess packaging from jumbo rolls of Flotex, which has cut our cardboard usage by 50 tons/year
- We use water-based inks and dyes to manufacture Flotex, no additional chemical processes take place other than high temperature steam treatment to secure the colors

LONG LASTING & EASY TO MAINTAIN (HIGHLY DURABLE AND FIT-FOR-PURPOSE SOLUTIONS)

- Modular installation like Flotex tiles and planks can save time, installation waste, money and the environment
- Forbo Flooring offers compatible Coral entrance flooring to keep Flotex cleaner for longer and reduce cleaning by up to 65%
- Thanks to its hard-wearing properties and durability benefits, Flotex flocked flooring has a product lifetime that surpasses that of ordinary textiles
- The very dense structure of Flotex prevents the penetration of dirt that remains on the surface
- The vertical fibers easily release dust, allergens and dirt

RECYCLING AND END-OF-LIFE (RECREATING VALUE AT THE END)

- Forbo is a member of C.A.R.E, a 3rd party recycling stewardship, which can divert Flotex from landfills at end-of-life, to be recycled into other goods.

Forbo Flooring Systems

visit us online: www.forboflooringNA.com | email: info.na@forbo.com

North American Headquarters: 8 Maplewood Drive, Humboldt Industrial Park, Hazle Township, PA 18202 | ph: 1-800-842-7839 | fax: 570-450-0258

Canadian Office: 3983 Nashua Drive Unit #1, Mississauga, Ontario L4V 1P3 | ph: 1-800-268-8108 | fax: 416-745-4211

Item #254096

creating better environments

Find us on



FLOORING SYSTEMS