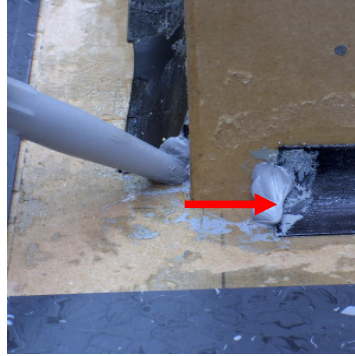


## Outer corner installation instructions



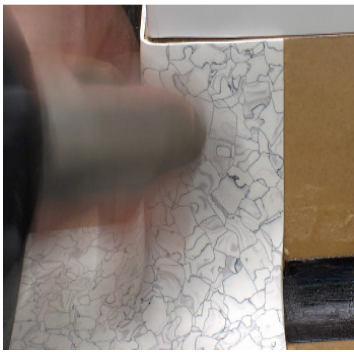
The outer corner is reinforced for about 20 mm in the area of the edge, therefore it's necessary to leave at least 22 mm of space.



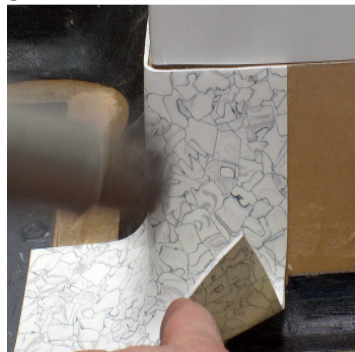
If you don't leave this space the underlying profile will obstruct the correct positioning of the corner. To compensate the space [22mm] fill the gap with glue.



Initially, apply the corner without heating it with hot air, position it while exercising a strong pressure.



Start with heating the upper edge making it attach well to the wall.

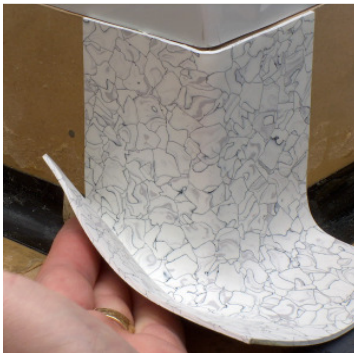


While heating the lower part, keep the side lifted so that it can't be misshapen.



Assure the corners adhere very well to the wall, the subfloor and the underlying profile. Same procedure for the other side.

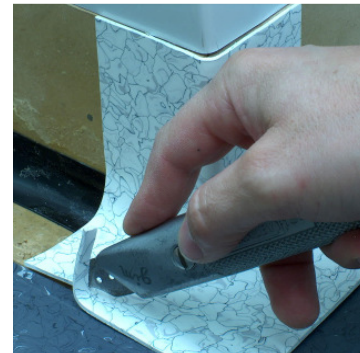
**Important: the corners are shaped with heat. Therefore while heating them it is necessary to hold them in the final position.**



Assure the corners adhere very well to the wall, the subfloor and the underlying profile. Same procedure for the other side.



Assure the corners adhere very well to the wall, the subfloor and the underlying profile. Same procedure for the other side.



Also in this case during the production we leave a little bit of material to enable you to adapt it to the floor.