



flotex® colour

A UNIQUE  
**TEXTILE FLOOR  
COVERING**

creating better environments

forbo

FLOORING SYSTEMS







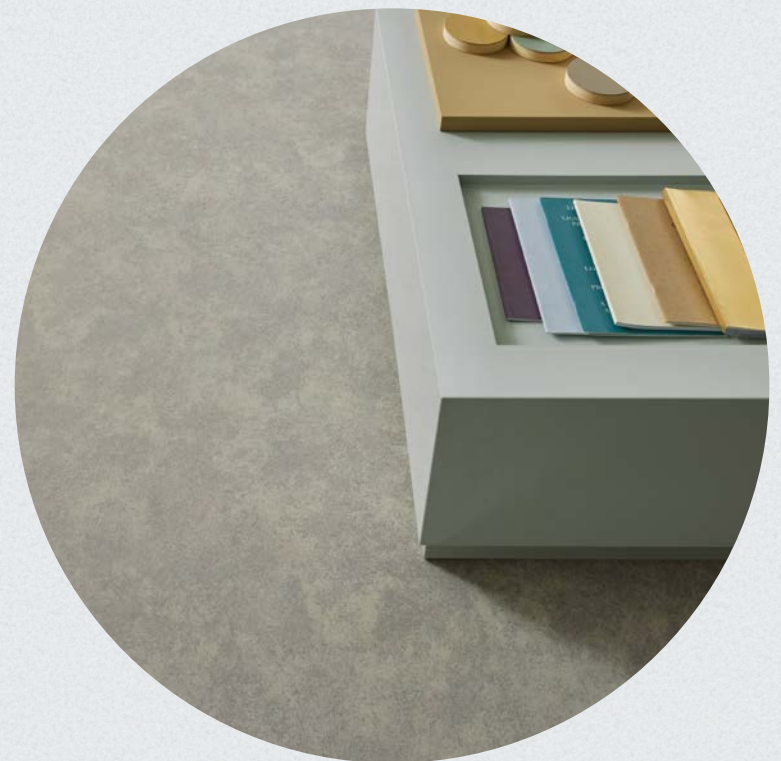
**flotex<sup>®</sup>** colour

# **STYLISH AND PRACTICAL** FLOCKED FLOOR COVERING

Flotex is a unique textile floor covering that combines the hard wearing and durable characteristics of a resilient floor with the quality, warmth and comfort of a carpet. Flotex is a strong and hygienic floor, and being completely waterproof, it is also the only truly washable textile floor.

Flotex flocked flooring is the only textile floor covering to be awarded the prestigious Allergy UK Seal of Approval™. Because of its highly dense pile, twice as many allergens are trapped in Flotex's nylon fibres and released upon vacuuming in comparison to conventional carpet. The first textile to be approved by Allergy UK, this unique flocked floor covering is proven to positively impact on the lives of allergy sufferers.

FLOTEX IS A STRONG AND  
HYGIENIC FLOOR WHICH IS  
COMPLETELY WATERPROOF





A modern interior space featuring a grey carpet. In the background, there is a blue wall with a white table and a gold pendant light. The room is well-lit and has a clean, minimalist aesthetic.

## flotex<sup>®</sup> penang

Penang represents a stunning look for any modern environment. Its hint of wood grains provides a quiet neutral floor design.

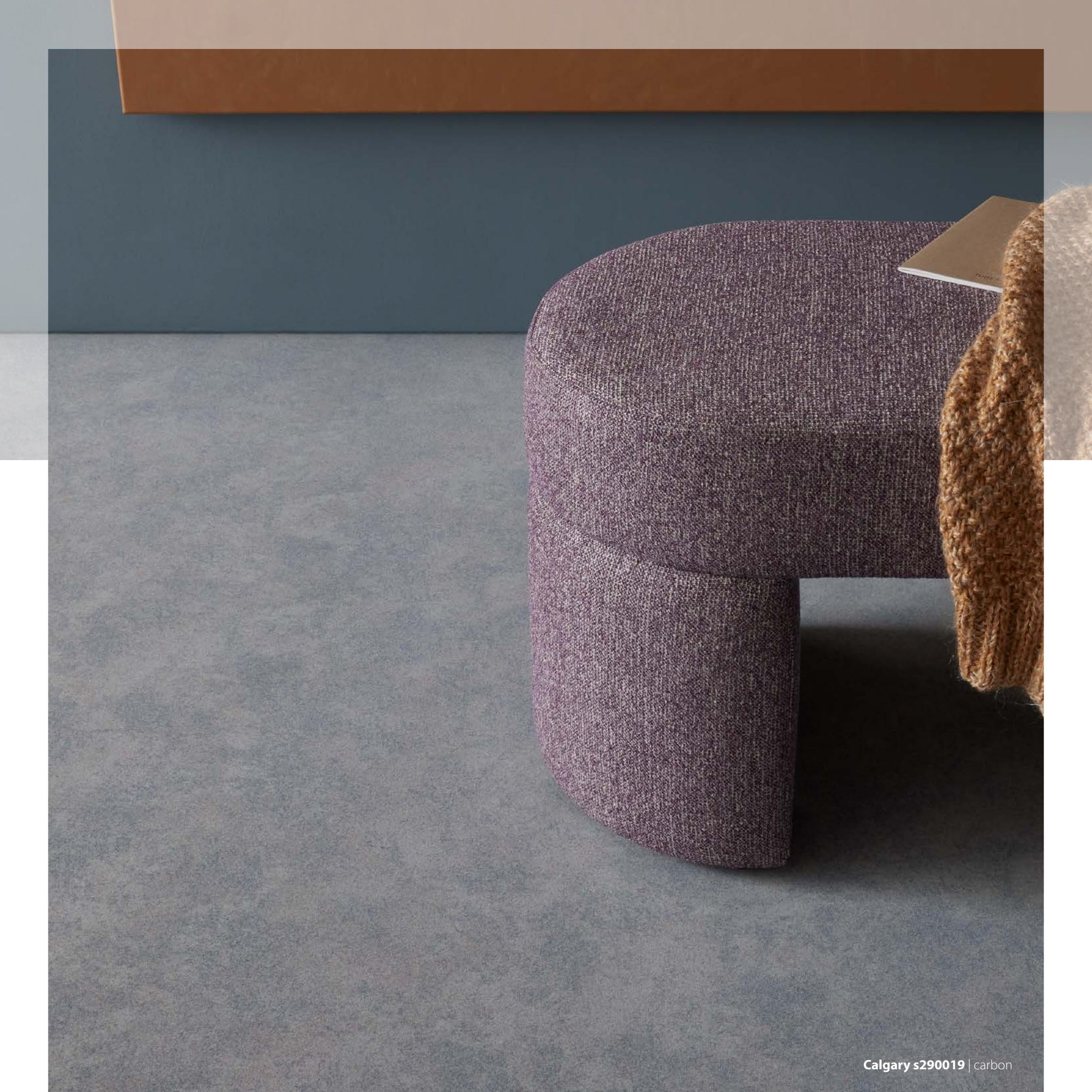


## flotex® metro

Metro is a versatile semi-plain floor design which covers a wide and modern colour bank. The understated pattern conveys texture without definite form, creating an authentic feel that is unique to Flotex flooring.









## flotex® calgary

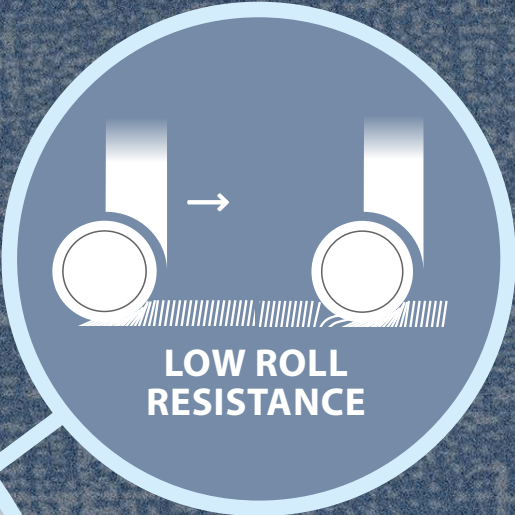
Calgary offers a wide range of colours in a soft, natural design that can easily be combined with other Flotex or resilient ranges like Marmoleum. Calgary is the perfect choice for application areas that require a muted ambiance.





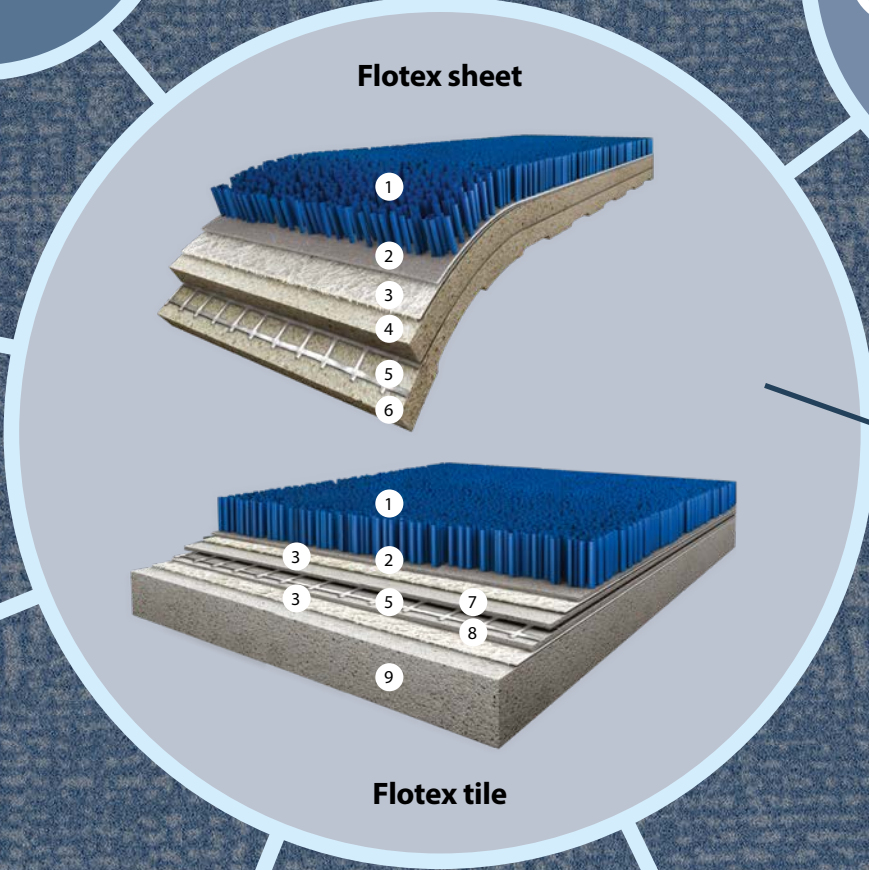


**STRAIGHT NYLON 6.6 FIBRES (FLOCK)**  
capture fine dust and allergens which are easily released when vacuumed




**LOW ROLL RESISTANCE**

**Up to 80 million fibres per m<sup>2</sup>**  
ensures high durability



- 1 Nylon 6.6 pile
- 2 Flock adhesive
- 3 Nonwoven fibreglass
- 4 Closed cell PVC foam
- 5 Fibreglass net reinforcement
- 6 Closed cell PVC foam
- 7 Compact PVC layer
- 8 Compact PVC layer
- 9 Recycled PVC Backing

  
**up to 59% recycled content**

  
**Vacuuming removes almost DOUBLE the ALLERGENS compared to conventional carpet**

**Safe and ultra low emissions**



# flotex<sup>®</sup>

## THE HIGH-TECH TEXTILE



UP TO 21 dB  
IMPACT SOUND  
REDUCTION AND 0.10  $\alpha_w$   
IN ROOM SOUND  
ABSORPTION



EXCELLENT  
SLIP RESISTANCE  
WHEN WET



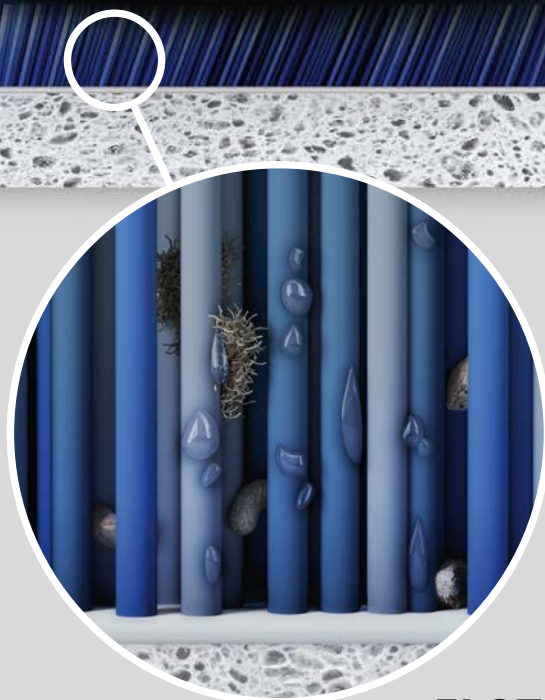
WASHABLE and  
WATERPROOF



MECHANICAL  
WET CLEANING  
POSSIBLE



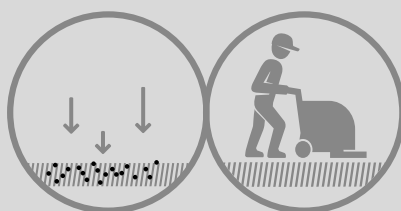
THE ONLY TEXTILE FLOORING WITH  
APPROVAL FROM THE BRITISH  
ALLERGY FOUNDATION



### FLOTEX

Up to 80 million straight nylon fibres per m<sup>2</sup> are electrostatically flocked into the backing. The unique structure ensures dirt and allergens can be released when vacuumed.

### HYGIENIC



**30%** MORE SOIL  
RELEASED THAN CARPET



### CARPET

Loop and cut pile carpets have a structure that makes removing allergens and fine dust very difficult in comparison to the smooth, straight and almost upright fibres in Flotex flocked flooring.



211044/232044 | nimbus

211046/232046 | grey

211031/232031 | ash

211110/232110 | tempest

211007/232007 | petrol

211016/232016 | indigo

211096/232096 | electric

211088/232088 | evergreen

211087/232087 | moss

211085/232085 | citrus

211099/232099 | gold

211076/232076 | pebble

211081/232081 | cocoa

211072/232072 | melon

211003/232003 | tangerine

211100/232100 | lilac

211008/232008 | red

211083/232083 | berry

211114/232114 | chocolate



15 m x 11/22 cm

## flotex® borders

Our Flotex borders help you to be creative when designing your floorspace by offering the ability to frame an area, separate spaces or provide an edge to your floor with a solid insert. Flotex borders are uni-coloured strips available in 11 or 22 cm width, which can be used in combination with Flotex sheet.

**Flotex borders (roll length 15 metres) can be ordered in two width sizes. The first 3 digits of the colour number indicate the width:**

**211**xxx border 11 cm

**232**xxx border 22 cm





# OTHER FLOTEX COLLECTIONS



More information







1. Product development and design



2. Sourcing and raw materials

**THE THEMES WE NEED TO GO AROUND TO MEET OUR AMBITION**



5. Recycling & end of life



3. Production & distribution



4. Long lasting & easy to maintain



# THE PILLARS OF OUR AMBITION

Three words are at the foundation of everything we do:

## Transparency, circularity and renewability

### **PRODUCT DEVELOPMENT AND DESIGN (PRODUCT DEVELOPMENT WITH CIRCULARITY AND USERS IN MIND)**

- Flotex is 100% phthalate free
- Fully transparent choices by using the EPD's which are 3rd party verified, using only 100% safe and traceable REACH compliant materials
- All Flotex products are manufactured with 100% green electricity and have very low product emissions that are below the industry average
- Flotex Colour range has no pattern repeats, reducing installation waste
- Flotex is the only textile covering approved by the British Allergy Foundation as it traps dust and allergens on the surface and releases them with a simple vacuum

### **SOURCING AND RAW MATERIALS (MAXIMIZING THE USE OF SUSTAINABLE AND RENEWABLE RAW MATERIALS)**

- Maximized use of recycled content in all products, Flotex tiles & planks contain up to 59% recycled content and actual content is published in our EPD's
- Controlled supply chain certification -ISO 140001 and 9001 standards and SA8000 for ethical supply chain
- Use of recycled materials back to our own products, all our raw materials meet the strictest health requirements

### **PRODUCTION AND DISTRIBUTION (CARBON NEUTRAL AND ZERO WASTE PRODUCTION)**

- Flotex production is dedicated to the concept of zero waste. 86% of factory waste is recycled
- Flotex is produced in an environment where substantial

reductions of CO2 have been achieved and additional improvements are planned

- We have eliminated excess packaging from jumbo rolls of Flotex, which has cut our cardboard usage by 50 tons/year
- We use water-based inks and dyes to manufacture Flotex, no additional chemical processes take place other than high temperature steam treatment to secure the colours

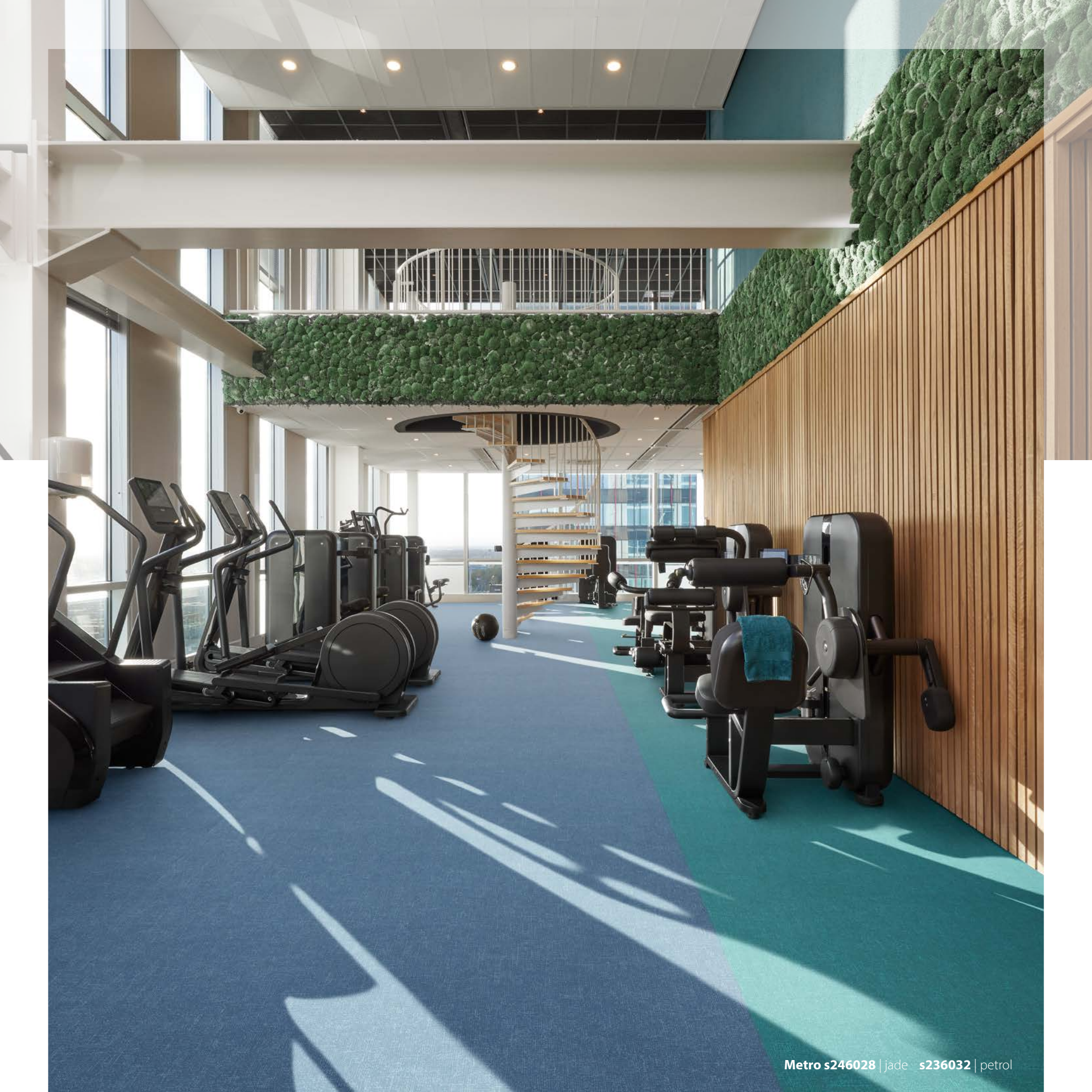
### **LONG LASTING & EASY TO MAINTAIN (HIGHLY DURABLE AND FIT-FOR-PURPOSE SOLUTIONS)**

- Modular installation like Flotex tiles and planks can save time, installation waste, money and the environment
- Forbo Flooring offers compatible Coral entrance flooring to keep Flotex cleaner for longer and reduce cleaning by up to 65%
- Thanks to its hard-wearing properties and durability benefits, Flotex flocked flooring has a product lifetime that surpasses that of ordinary textiles
- The very dense structure of Flotex prevents the penetration of dirt that remains on the surface
- The vertical fibers easily release dust, allergens and dirt

### **RECYCLING AND END-OF-LIFE (RECREATING VALUE AT THE END)**

- Back to the floor projects – returned modular floors can be recycled to close the materials loop
- Some sheet products are offered with Flotex next backing option which is a loose lay solution so it can be reused







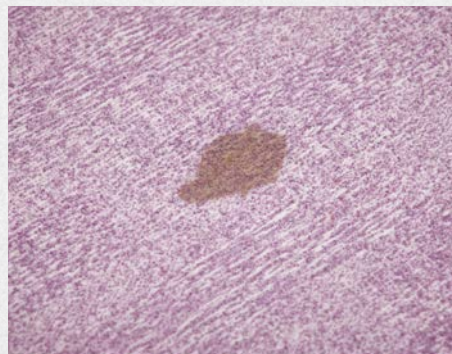
**flotex®** colour

# CLEANING AND MAINTENANCE

Always use an entrance mat such as Forbo Coral to keep as much dirt out of the building and keep the floor looking good for longer.

## Spot cleaning

Many kinds of spills can be removed with just clean warm water or a carpet detergent. Heavier and more stubborn spills can be removed using a paint scraper and a brush.



## Regular cleaning

Daily vacuuming and regular spot and stain removal keeps Flotex looking like new for years to come.



## Maintenance

Periodic maintenance using spray extraction or a 3-in-1 machine (rinse/brush/water) will guarantee the best result on Flotex.

