

## suzani

Flotex® combines the performance of a resilient woven flooring with the slip resistant & acoustic properties usually associated with textiles. Flotex® is strong and hygienic, and, being completely waterproof, it is also the only truly washable textile floor covering.



075602 | HUSK



075603 | LICHEN



075600 | AQUA



075606 | SILVER



075605 | POMEGRANATE



075601 | BLUEBIRD

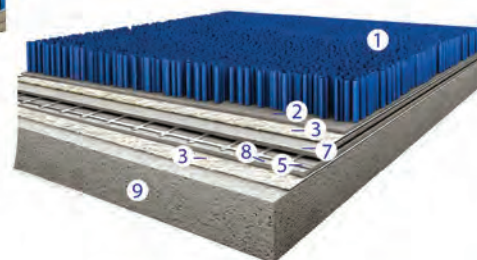
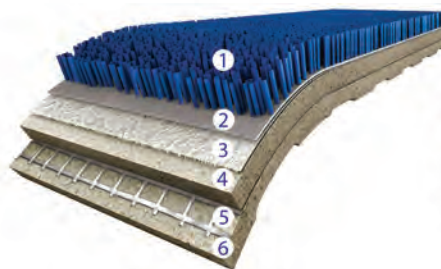


075604 | NAVY



### Flotex® tile

1. Nylon 6.6 pile
2. Flock Adhesive
3. Nonwoven fiberglass
4. Closed cell PVC foam
5. Fiberglass net reinforcement
6. Closed cell PVC foam
7. Compact PVC layer
8. Compact PVC layer
9. Recycled PVC Backing



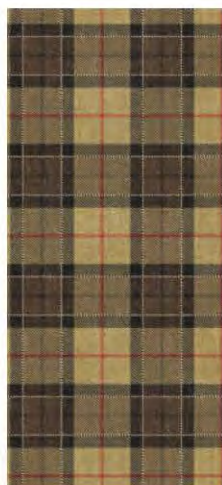
## connery



075101 | BURGUNDY



075102 | GOLDEN



075100 | MAPLEWOOD



075104 | SILVERCREST



075107 | HEARTHSTONE



075106 | MOON SHADOW



075105 | FOREST GLEN



## woven



075201 | DIJON



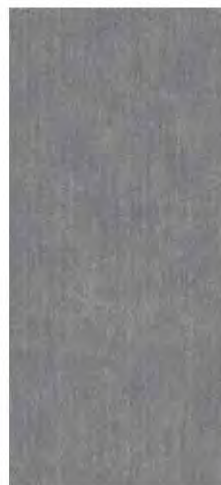
075202 | MOCHA



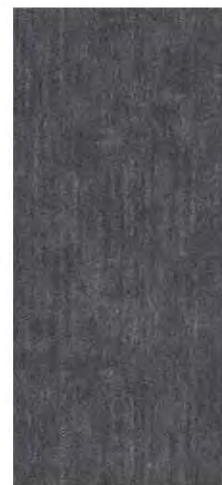
075203 | BORDEAUX



075200 | BISQUE



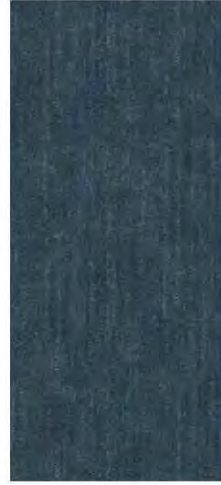
075206 | STERLING



075204 | STONYBROOK



075205 | WARM SPRINGS



075207 | SEA ISLE

**PHYSICAL CHARACTERISTICS (PLANKS)**

(dimensions are approximate)

Plank size ..... 9.48" x 39.37" (100cm x 25cm)

Gauge ..... 0.21" approx. (5.3mm)

Backing ..... recycled vinyl cushioned backing

Packaging ..... 10 planks (26.91ft<sup>2</sup> / 2.5m<sup>2</sup>)

Wear Layer Density ..... approx. 46,000 fibers per square inch

## avenue



075506 | SOAPSTONE



075507 | MULTISTONE



075500 | LIMESTONE



075501 | LIMESTONE SOAPSTONE



075502 | SANDSTONE



075503 | SANDSTONE SOAPSTONE



075504 | SILTSTONE



075505 | SILTSTONE SOAPSTONE

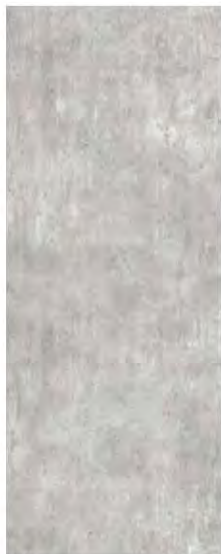




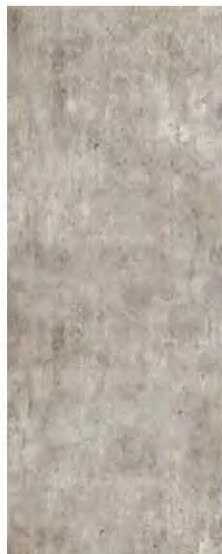
## cement



005008 | GREY/BLUE



005007 | LIGHT GREY



005009 | GREYSTROKE



005010 | SOUND



## marble



005026 | DARK TAUPE



005024 | LIGHT TAUPE



005025 | DARK GRAY



005023 | LIGHT GRAY

## reclaimed wood



- **waterproof** -  
100% impervious to water
- **durable** -  
46,000 fibers per square inch,  
resists crushing and matting
- **easy to clean** -  
Dense, upright fiber makes it easier to  
clean (no loops or twists to trap dirt)
- **soil & stain resistant** -  
Most spills can be removed,  
including permanent marker
- **indoor air quality** -  
unlike the twisted fibers of carpet  
which can trap and conceal dirt and  
allergens, the dense, upright fibers  
of Flotex® easily release dirt and  
allergens by vacuuming
- **hygienic** -  
Flotex® is a supplement to, and  
not a substitute for, standard infection  
control practices, and has been shown  
to reduce microbial contamination  
based on Independent Laboratory Testing



005027 | LIGHT GRAY



005028 | DARK GRAY



005029 | BROWN



005030 | BLUE



## timber



005011 | OAK NOIR



005013 | WHITE WASH



005012 | WEATHERED WOOD



005015 | BEECHWOOD



005016 | HONEY OAK



005014 | PUMPKIN PINE

## bayside



005017 | KELP

005018 | DRIFTWOOD

005020 | SAND



005022 | OYSTER

005021 | MARSH

005019 | BOARDWALK



## cleo



075300 | KITTEN



075303 | INDIA



075301 | SNOW



075302 | PANTHER

## tweed



075400 | WHEAT



075403 | HARBOR BLUE



075402 | MIDNIGHT



075401 | FOGGY GRAY

