

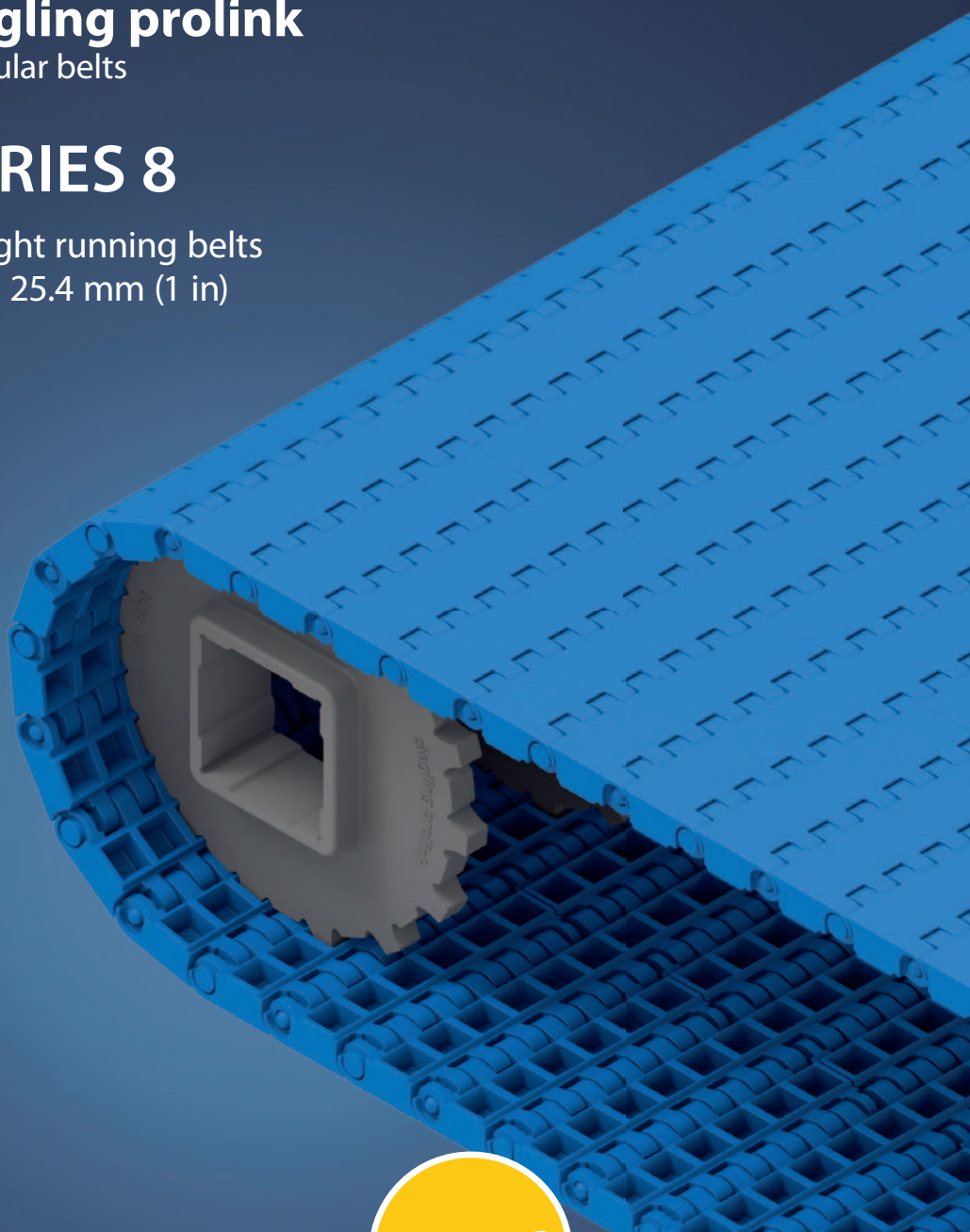
# EXCERPT FROM PROLINK ENGINEERING MANUAL

01/20 (Ref-No. 888)

**siegling prolink**  
modular belts

## SERIES 8

Straight running belts  
Pitch 25.4 mm (1 in)



**PATENTED**

**Forbo Siegling GmbH**  
Lilienthalstraße 6/8, D-30179 Hannover  
Phone +49 511 6704 0  
[www.forbo-siegling.com](http://www.forbo-siegling.com), [siegling@forbo.com](mailto:siegling@forbo.com)

Ref. no. 888-2\_1.2\_S8

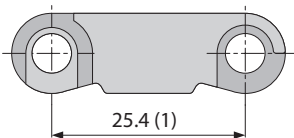
# SERIES 8 | OVERVIEW

**siegling prolink**  
modular belts

Straight running belts | Pitch 25.4 mm (1 in)

Belts for medium to heavy-duty applications

Side view scale 1:1



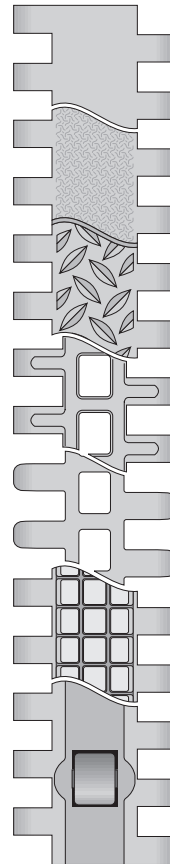
## Design characteristics

- Closed hinge design provides high belt pull capacity
- Rigid module design makes belt suitable for long conveyors
- Robust design guarantees superior durability
- Closed solid edge design
- Flame retardant version available (PXX-HC – in line with DIN EN 13501-1)

## Basic data

Pitch	25.4 mm (1 in)
Belt width min.	38.1 mm (1.5 in)
Width increments	12.7 mm (0.5 in)
Hinge pins	Made of plastic (PBT, PP) One-piece up to a belt width of 1200 mm (47 in)

Available surface pattern and opening area



### S8-0 FLT

Closed, smooth surface

### S8-0 SRS

Closed, slip-resistant surface

### S8-0 NSK/S8-0 NSK2

Closed surface with non skid pattern

### S8-25 RAT

Open (25 %) surface with rounded contact surfaces

### S8.1-30 FLT

Open (30 %) flat top surface with rounded hinges

### S8-0 FRT1

Closed surface with friction top

### S8-0 RTP A90

Closed surface with roller top

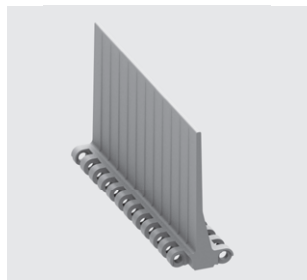
## Sprockets

in different sizes with round or square sprocket bore



## Profiles

in different heights and designs for inclines



## Side guards

in different heights for retention of bulk products



## Hold Down Tabs

Hold Down Tabs for additional guiding



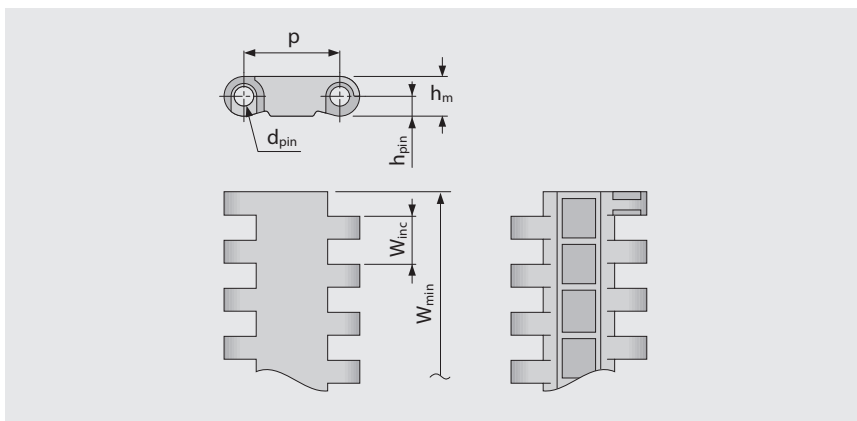
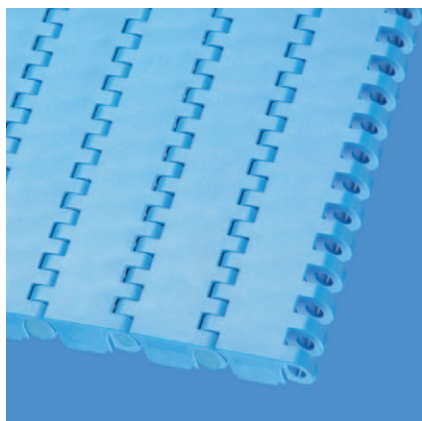
# SERIES 8 | BELT TYPES

siegling prolink  
modular belts

Straight running belt | Pitch 25.4 mm (1 in)

## S8-0 FLT | 0% Opening | Flat top

Closed, smooth surface | Flat top surface



### Belt dimensions

	p	d <sub>pin</sub>	h <sub>m</sub>	h <sub>pin</sub>	h <sub>s</sub>	W <sub>min</sub>	W <sub>inc</sub>	W <sub>tol</sub>	Minimum flex radii <sup>1)</sup>				
	Pitch	Pin Ø	Thickness [mm]	Pin position [mm]	Height [mm]	Width min. [mm]	Width Increment [mm]	Width tolerance [%]	r1	r2	r3	r4	r5
mm	25.4	5.0	10.5	5.3	0.0	38.1	12.7	±0.2	–	25.4	50.8	76.2	25.4
inch	1.0	0.2	0.41	0.21	0.0	1.5	0.5	±0.2	–	1.0	2.0	3.0	1.0

### Available standard materials<sup>4)</sup>

Belt		Pin		Nominal belt pull, straight		Weight		Width deviation [%]	Temperature		Certificates	
Material	Color	Material	Color	[N/mm]	[lb/ft]	[kg/m²]	[lb/ft²]		[°C]	[°F]	FDA <sup>2)</sup>	EU <sup>3)</sup>
POM	BL	PBT	BL	40	2741	11.0	2.25	-0.31	-45/90	-49/194	●	●
POM	LG	PBT	UC	40	2741	11.0	2.25	-0.31	-45/90	-49/194	●	●
POM	WT	PBT	UC	40	2741	11.0	2.25	-0.31	-45/90	-49/194	●	●
POM-CR	AT	PBT	UC	40	2741	11.0	2.25	-0.31	-45/90	-49/194	–	–
PP	WT	PP	WT	20	1370	7.1	1.45	0.0	5/100	41/212	●	●
PP	LG	PP	WT	20	1370	7.1	1.45	0.0	5/100	41/212	●	●
PP	BL	PP	BL	20	1370	7.1	1.45	0.0	5/100	41/212	●	●
PA-HT	BK	PA-HT	BK	30	2056	10.7	2.19	1.49	-30/155	-22/311	–	–

#### Mold to order belts

PXX-HC	BK	PBT	BL	20	1370	7.9	1.62	0.0	5/100	41/212	–	–
--------	----	-----	----	----	------	-----	------	-----	-------	--------	---	---

Mold to width available in: 76 mm (3.0 in), 152 mm (6.0 in), 229 mm (9.0 in)

■ AT (Anthracite), ■ BK (Black), ■ BL (Blue), ■ LG (Light gray), ■ UC (Uncolored), ■ WT (White)

All measurements and tolerances apply at 21 °C; for temperature deviations please see Prolink manual chapter 4.4 "Temperature influence".

All imperial dimensions (inches) are rounded off.

<sup>1)</sup> Flex radii: r1 = side flex, r2 = front flex on roller, r3 = back flex on load bearing roller, r4 = back flex on Hold Down shoe, r5 = back flex on roller

<sup>2)</sup> Complies with FDA 21 CFR

<sup>3)</sup> Complies with (EU) 10/2011 and (EC) 1935/2004 regulations regarding the raw materials used and the migration thresholds

<sup>4)</sup> More materials and colors on request



MOVEMENT SYSTEMS

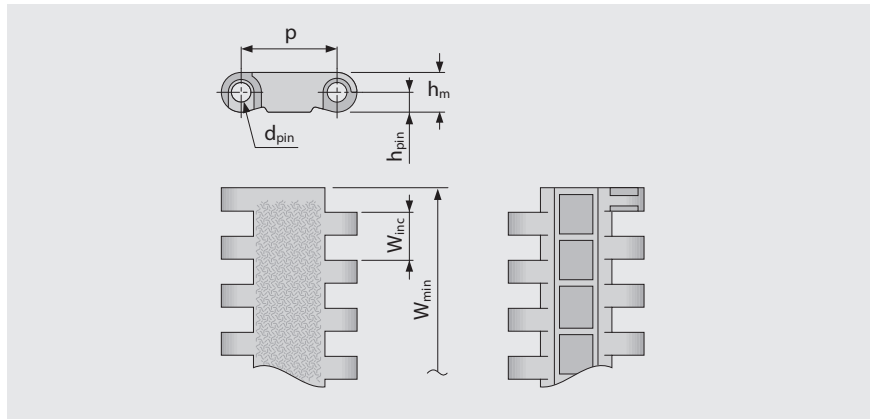
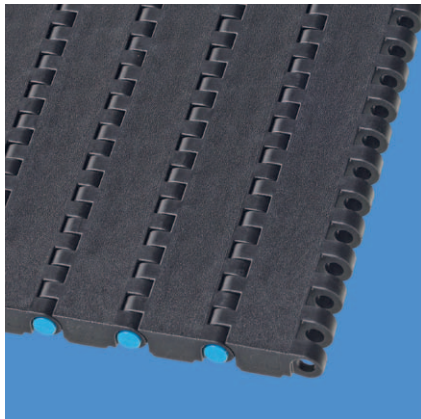
# SERIES 8 | BELT TYPES

siegling prolink  
modular belts

Straight running belt | Pitch 25.4 mm (1 in)

## S8-0 SRS | 0% Opening | Slip-resistant surface

Closed surface | Slip-resistant surface, pleasant to walk and kneel on



### Belt dimensions

	p	d <sub>pin</sub>	h <sub>m</sub>	h <sub>pin</sub>	h <sub>s</sub>	W <sub>min</sub>	W <sub>inc</sub>	W <sub>tol</sub>	Minimum flex radii <sup>1)</sup>				
	Pitch	Pin Ø	Thickness [mm]	Pin position [mm]	Height [mm]	Width min. [mm]	Width Increment [mm]	Width tolerance [%]	r1	r2	r3	r4	r5
mm	25.4	5.0	10.5	5.3	0.0	38.1	12.7	±0.2	–	25.4	50.8	76.2	25.4
inch	1.0	0.2	0.41	0.21	0.0	1.5	0.5	±0.2	–	1.0	2.0	3.0	1.0

### Available standard materials<sup>4)</sup>

Belt		Pin		Nominal belt pull, straight		Weight		Width deviation [%]	Temperature		Certificates
Material	Color	Material	Color	[N/mm]	[lb/ft]	[kg/m <sup>2</sup> ]	[lb/ft <sup>2</sup> ]		[°C]	[°F]	Flame retardant <sup>2)</sup>
POM-CR	AT	PBT	BL	40	2741	11.0	2.25	-0.31	-45/90	-49/194	
POM-HC	AT	PBT	BL	40	2741	11.0	2.25	-0.31	-45/90	-49/194	
PXX-HC	BK	PBT	BL	20	1370	7.9	1.62	0.0	5/100	41/212	●

Mold to width available in: 76 mm (3.0 in), 152 mm (6.0 in), 229 mm (9.0 in)

■ AT (Anthracite), ■ BK (Black), ■ BL (Blue)

All measurements and tolerances apply at 21 °C; for temperature deviations please see Prolink manual chapter 4.4 "Temperature influence".

All imperial dimensions (inches) are rounded off.

<sup>1)</sup> Flex radii: r1 = side flex, r2 = front flex on roller, r3 = back flex on load bearing roller, r4 = back flex on Hold Down shoe, r5 = back flex on roller

<sup>2)</sup> Complies with DIN EN 13501-1 Cfl-s1 (and DIN 4102 B1)

<sup>4)</sup> More materials and colors on request



MOVEMENT SYSTEMS

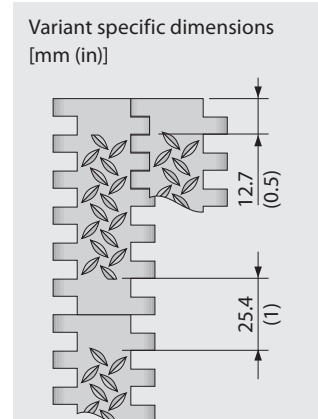
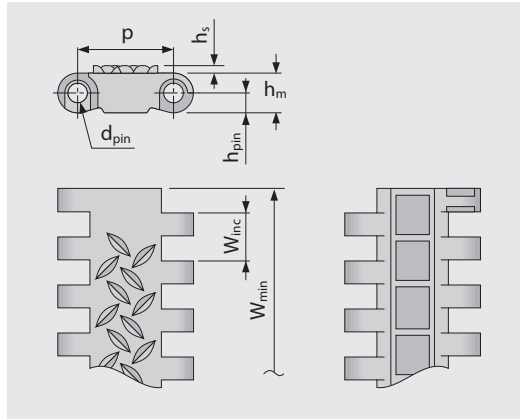
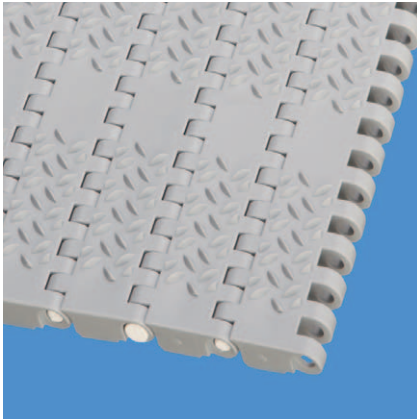
# SERIES 8 | BELT TYPES

siegling prolink  
modular belts

Straight running belt | Pitch 25.4 mm (1 in)

## S8-0 NSK | 0 % Opening | Non skid

Closed surface | Non skid surface for increased safety when walking on belt | Flat top sections across the belt width for supporting the belt on the return



### Belt dimensions

	p	d <sub>pin</sub>	h <sub>m</sub>	h <sub>pin</sub>	h <sub>s</sub>	W <sub>min</sub>	W <sub>inc</sub>	W <sub>tol</sub>	Minimum flex radii <sup>1)</sup>				
	Pitch	Pin Ø	Thickness [mm]	Pin position [mm]	Height [mm]	Width min. [mm]	Width Increment [mm]	Width tolerance [%]	r1	r2	r3	r4	r5
mm	25.4	5.0	10.5	5.3	2.0	38.1	12.7	±0.2	–	25.4	50.8	76.2	25.4
inch	1.0	0.2	0.41	0.21	0.08	1.5	0.5	±0.2	–	1.0	2.0	3.0	1.0

### Available standard materials<sup>4)</sup>

Belt		Pin		Nominal belt pull, straight		Weight		Width deviation [%]	Temperature		Certificates	
Material	Color	Material	Color	[N/mm]	[lb/ft]	[kg/m <sup>2</sup> ]	[lb/ft <sup>2</sup> ]		[°C]	[°F]	FDA <sup>2)</sup>	EU <sup>3)</sup>
POM	BL	PBT	BL	40	2741	11.0	2.25	-0.31	-45/90	-49/194	●	●
PP	LG	PP	WT	20	1370	7.1	1.45	0.0	5/100	41/212	●	●
PXX-HC	BK	PBT	BL	20	1370	7.9	1.62	0.0	5/100	41/212	–	–

Mold to width available in: 229 mm (9.0 in)

■ BK (Black), ■ BL (Blue), ■ LG (Light gray), □ WT (White)

All measurements and tolerances apply at 21 °C; for temperature deviations please see Prolink manual chapter 4.4 "Temperature influence".

All imperial dimensions (inches) are rounded off.

<sup>1)</sup> Flex radii: r1 = side flex, r2 = front flex on roller, r3 = back flex on load bearing roller, r4 = back flex on Hold Down shoe, r5 = back flex on roller

<sup>2)</sup> Complies with FDA 21 CFR

<sup>3)</sup> Complies with (EU) 10/2011 and (EC) 1935/2004 regulations regarding the raw materials used and the migration thresholds

<sup>4)</sup> More materials and colors on request



MOVEMENT SYSTEMS

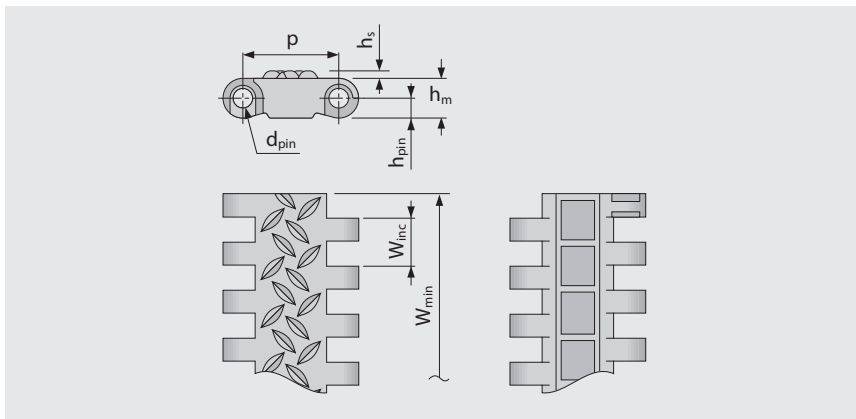
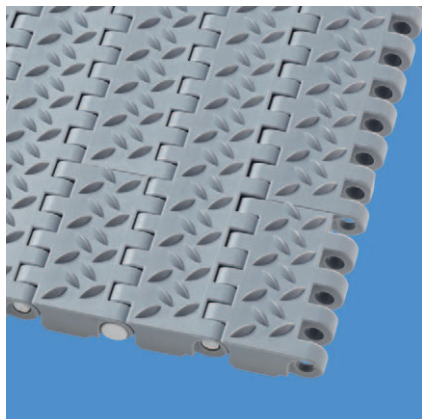
# SERIES 8 | BELT TYPES

**siebling prolink**  
modular belts

Straight running belt | Pitch 25.4 mm (1 in)

## S8-0 NSK2 | 0% Opening | Non skid (Design 2)

Closed surface | Non skid surface for increased safety when walking on belt | Closed hinges | Uninterrupted NSK-structure across the full belt width



### Belt dimensions

	p	d <sub>pin</sub>	h <sub>m</sub>	h <sub>pin</sub>	h <sub>s</sub>	W <sub>min</sub>	W <sub>inc</sub>	W <sub>tol</sub>	Minimum flex radii <sup>1)</sup>				
	Pitch	Pin Ø	Thickness [mm]	Pin position [mm]	Height [mm]	Width min. [mm]	Width Increment [mm]	Width tolerance [%]	r1	r2	r3	r4	r5
mm	25.4	5.0	10.5	5.3	2.0	38.1	12.7	±0.2	–	25.4	50.8	76.2	25.4
inch	1.0	0.2	0.41	0.21	0.08	1.5	0.5	±0.2	–	1.0	2.0	3.0	1.0

### Available standard materials<sup>4)</sup>

Belt		Pin		Nominal belt pull, straight		Weight		Width deviation	Temperature		Certificates	
Material	Color	Material	Color	[N/mm]	[lb/ft]	[kg/m <sup>2</sup> ]	[lb/ft <sup>2</sup> ]	[%]	[°C]	[°F]	FDA <sup>2)</sup>	EU <sup>3)</sup>
PP	LG	PP	WT	20	1370	7.1	1.45	0.0	5/100	41/212	●	●

Mold to width available in: 229 mm (9.0 in)

■ LG (Light gray), □ WT (White)

All measurements and tolerances apply at 21 °C; for temperature deviations please see Prolink manual chapter 4.4 "Temperature influence".

All imperial dimensions (inches) are rounded off.

<sup>1)</sup> Flex radii: r1 = side flex, r2 = front flex on roller, r3 = back flex on load bearing roller, r4 = back flex on Hold Down shoe, r5 = back flex on roller

<sup>2)</sup> Complies with FDA 21 CFR

<sup>3)</sup> Complies with (EU) 10/2011 and (EC) 1935/2004 regulations regarding the raw materials used and the migration thresholds

<sup>4)</sup> More materials and colors on request



MOVEMENT SYSTEMS

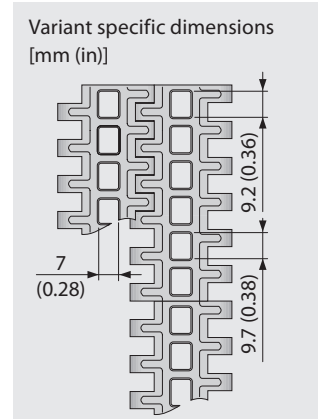
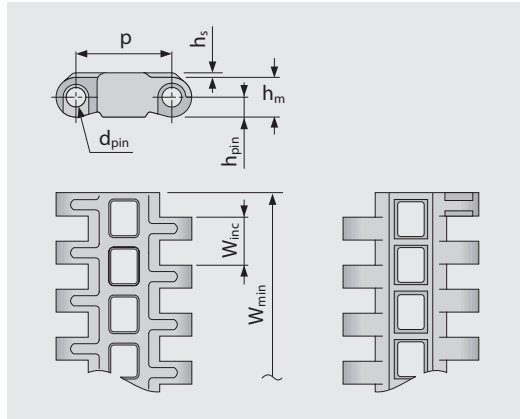
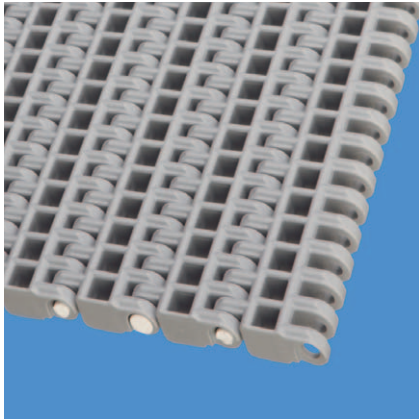
# SERIES 8 | BELT TYPES

siebling prolink  
modular belts

Straight running belt | Pitch 25.4 mm (1 in)

## S8-25 RAT | 25 % Opening | Radius top

Open area (25 %) with rounded contact surfaces | Contact area 24 % (Largest opening: 9.7 x 7 mm/0.38 x 0.28 in) | Radius top belt surface ensures minimum product contact and good release characteristics



### Belt dimensions

	p	d <sub>pin</sub>	h <sub>m</sub>	h <sub>pin</sub>	h <sub>s</sub>	W <sub>min</sub>	W <sub>inc</sub>	W <sub>tol</sub>	Minimum flex radii <sup>1)</sup>				
	Pitch	Pin Ø	Thickness [mm]	Pin position [mm]	Height [mm]	Width min. [mm]	Width Increment [mm]	Width tolerance [%]	r1	r2	r3	r4	r5
mm	25.4	5.0	10.5	5.3	2.0	38.1	12.7	±0.2	–	25.4	50.8	76.2	25.4
inch	1.0	0.2	0.41	0.21	0.08	1.5	0.5	±0.2	–	1.0	2.0	3.0	1.0

### Available standard materials<sup>4)</sup>

Belt		Pin		Nominal belt pull, straight		Weight		Width deviation [%]	Temperature		Certificates	
Material	Color	Material	Color	[N/mm]	[lb/ft]	[kg/m <sup>2</sup> ]	[lb/ft <sup>2</sup> ]		[°C]	[°F]	FDA <sup>2)</sup>	EU <sup>3)</sup>
POM	BL	PBT	BL	40	2741	9.7	1.99	-0.61	-45/90	-49/194	●	●
PP	LG	PP	WT	20	1370	6.4	1.31	0.0	5/100	41/212	●	●
PP	BL	PP	BL	20	1370	6.4	1.31	0.0	5/100	41/212	●	●
PA-HT	BK	PA-HT	BK	30	2056	9.8	2.01	1.53	-30/155	-22/311	–	–

Mold to order belts												
PE		PE		15	1028	6.7	1.37	-0.31	-70/65	-94/149	–	–

Mold to width available in: 76 mm (3.0 in), 152 mm (6.0 in), 229 mm (9.0 in)

■ BK (Black), ■ BL (Blue), ■ LG (Light gray), □ WT (White)

All measurements and tolerances apply at 21 °C; for temperature deviations please see Prolink manual chapter 4.4 "Temperature influence".

All imperial dimensions (inches) are rounded off.

<sup>1)</sup> Flex radii: r1 = side flex, r2 = front flex on roller, r3 = back flex on load bearing roller, r4 = back flex on Hold Down shoe, r5 = back flex on roller

<sup>2)</sup> Complies with FDA 21 CFR

<sup>3)</sup> Complies with (EU) 10/2011 and (EC) 1935/2004 regulations regarding the raw materials used and the migration thresholds

<sup>4)</sup> More materials and colors on request



MOVEMENT SYSTEMS

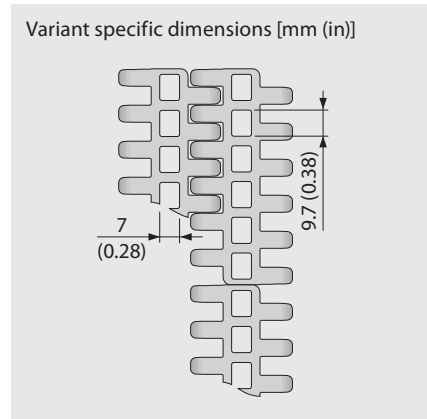
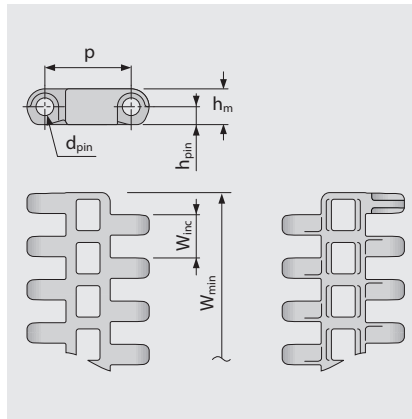
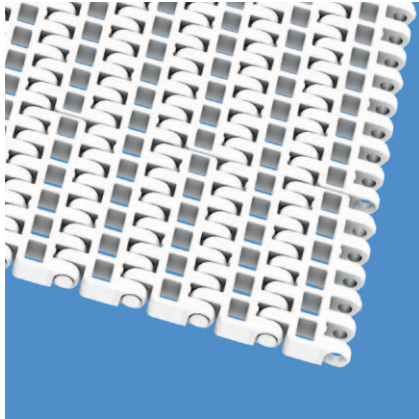
# SERIES 8 | BELT TYPES

siebling prolink  
modular belts

Straight running belt | Pitch 25.4 mm (1 in)

## S8.1-30 FLT | 30% Opening | Flat top

Open version (30%) | Flat top surface | 53% contact area (Largest opening: 9.7 x 7 mm/0.38 x 0.28 in) | Smooth surface



### Belt dimensions

	p	d <sub>pin</sub>	h <sub>m</sub>	h <sub>pin</sub>	h <sub>s</sub>	W <sub>min</sub>	W <sub>inc</sub>	W <sub>tol</sub>	Minimum flex radii <sup>1)</sup>				
	Pitch	Pin Ø	Thickness [mm]	Pin position [mm]	Height [mm]	Width min. [mm]	Width Increment [mm]	Width tolerance [%]	r1	r2	r3	r4	r5
mm	25.4	5.0	10.5	5.3	0.0	76.2	12.7	±0.2	–	25.4	50.8	76.2	25.4
inch	1.0	0.2	0.41	0.21	0.0	3.0	0.5	±0.2	–	1.0	2.0	3.0	1.0

### Available standard materials<sup>4)</sup>

Belt		Pin		Nominal belt pull, straight		Weight		Width deviation	Temperature		Certificates	
Material	Color	Material	Color	[N/mm]	[lb/ft]	[kg/m²]	[lb/ft²]	[%]	[°C]	[°F]	FDA <sup>2)</sup>	EU <sup>3)</sup>
POM	BL	PBT	BL	40	2741	9.0	1.84	-0.58	-45/90	-49/194	●	●
PP	BL	PP	BL	20	1370	5.8	1.19	0.0	5/100	41/212	●	●
PP	WT	PP	WT	20	1370	5.8	1.19	0.0	5/100	41/212	●	●

Mold to order belts												
PE	BL	PE	BL	15	1028	6.1	1.25	-0.31	-70/65	-94/149	●	●

Mold to width available in: 76 mm (3.0 in), 191 mm (7.5 in)

■ BL (Blue), □ WT (White)

All measurements and tolerances apply at 21 °C; for temperature deviations please see Prolink manual chapter 4.4 "Temperature influence".

All imperial dimensions (inches) are rounded off.

<sup>1)</sup> Flex radii: r1 = side flex, r2 = front flex on roller, r3 = back flex on load bearing roller, r4 = back flex on Hold Down shoe, r5 = back flex on roller

<sup>2)</sup> Complies with FDA 21 CFR

<sup>3)</sup> Complies with (EU) 10/2011 and (EC) 1935/2004 regulations regarding the raw materials used and the migration thresholds

<sup>4)</sup> More materials and colors on request



MOVEMENT SYSTEMS

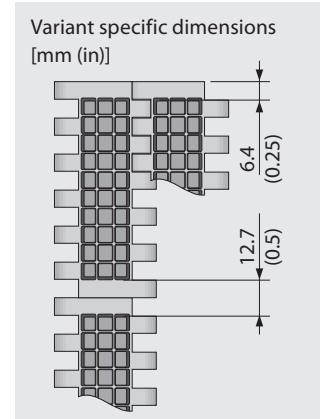
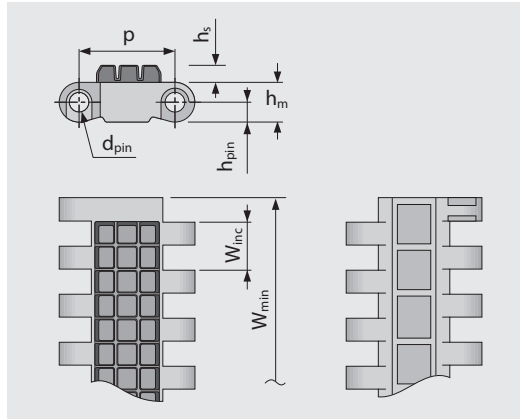
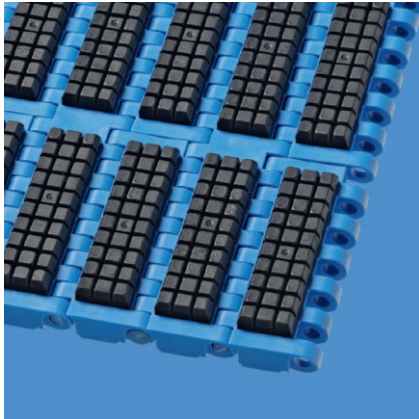
# SERIES 8 | BELT TYPES

**siegling prolink**  
modular belts

Straight running belt | Pitch 25.4 mm (1 in)

## S8-0 FRT1 | 0% Opening | Friction top (Design 1)

Closed surface | Friction top with cube-shaped High Grip pads | Grooves inbetween to improve flexibility and to channel dirt away from the friction surface | Closed hinges



### Belt dimensions

	p	d <sub>pin</sub>	h <sub>m</sub>	h <sub>pin</sub>	h <sub>s</sub>	W <sub>min</sub>	W <sub>inc</sub>	W <sub>tol</sub>	Minimum flex radii <sup>1)</sup>				
	Pitch	Pin Ø	Thickness [mm]	Pin position [mm]	Height [mm]	Width min. [mm]	Width Increment [mm]	Width tolerance [%]	r1	r2	r3	r4	r5
mm	25.4	5.0	10.5	5.3	4.5	76.2	76.2	±0.2	–	25.4	50.8	76.2	25.4
inch	1.0	0.2	0.41	0.21	0.18	3.0	3.0	±0.2	–	1.0	2.0	3.0	1.0

### Available standard materials<sup>4)</sup>

Belt		Pin		Rubber		Nominal belt pull, straight		Weight		Width deviation	Temperature		Certificates	
Material	Color	Material	Color	material	color	[N/mm]	[lb/ft]	[kg/m <sup>2</sup> ]	[lb/ft <sup>2</sup> ]	[%]	[°C]	[°F]	FDA <sup>2)</sup>	EU <sup>3)</sup>
POM	BL	PBT	BL	R6	BK	40	2741	17.7	3.63	-0.31	-45/60	-49/140	–	–
PP	LG	PP	WT	R7	BK	20	1370	12.6	2.58	0.0	5/100	41/212	●	●

Mold to order belts														
PP	BL	PP	BL	R7	BG	20	1370	12.6	2.58	0.0	5/100	41/212	●	●

Mold to width available in: 229 mm (9.0 in)

■ BG (Beige), ■ BK (Black), ■ BL (Blue), ■ LG (Light gray), □ WT (White)

All measurements and tolerances apply at 21 °C; for temperature deviations please see Prolink manual chapter 4.4 "Temperature influence".

All imperial dimensions (inches) are rounded off.

<sup>1)</sup> Flex radii: r1 = side flex, r2 = front flex on roller, r3 = back flex on load bearing roller, r4 = back flex on Hold Down shoe, r5 = back flex on roller

<sup>2)</sup> Complies with FDA 21 CFR

<sup>3)</sup> Complies with (EU) 10/2011 and (EC) 1935/2004 regulations regarding the raw materials used and the migration thresholds

<sup>4)</sup> More materials and colors on request



MOVEMENT SYSTEMS

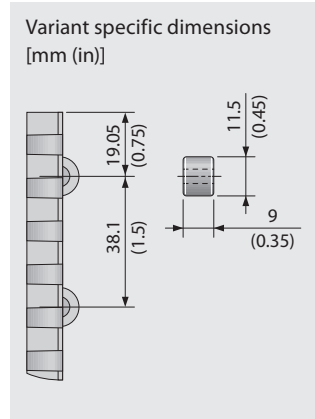
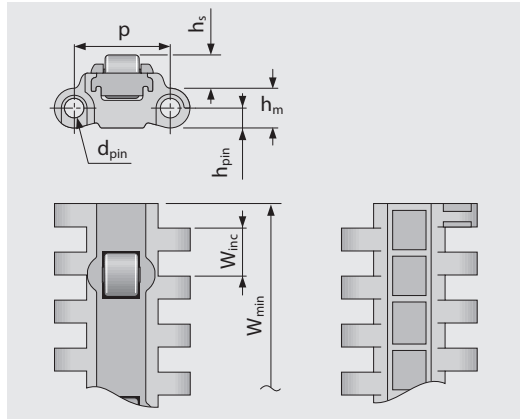
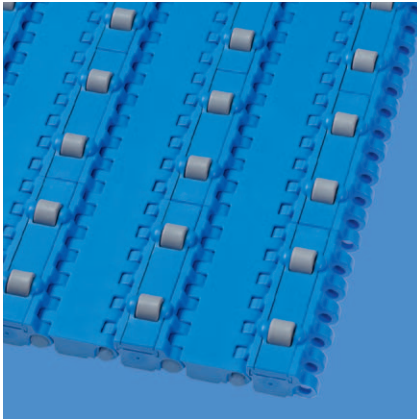
# SERIES 8 | BELT TYPES

**siebling prolink**  
modular belts

Straight running belt | Pitch 25.4 mm (1 in)

## S8-0 RTP A90 | 0% Opening | Roller top · A90

Closed surface with roller top at 90° to the direction of travel | version for low-friction merging of products lateral

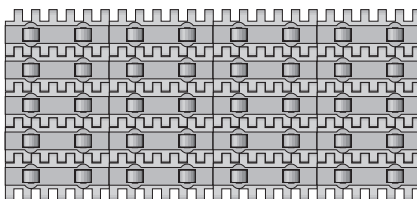


### Belt dimensions

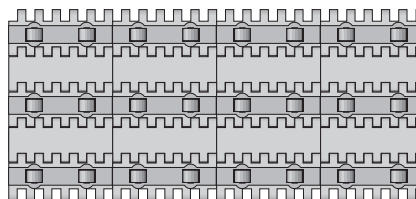
	p	d <sub>pin</sub>	h <sub>m</sub>	h <sub>pin</sub>	h <sub>s</sub>	W <sub>min</sub>	W <sub>inc</sub>	W <sub>tol</sub>	Minimum flex radii <sup>1)</sup>				
	Pitch	Pin Ø	Thickness [mm]	Pin position [mm]	Height [mm]	Width min. [mm]	Width Increment [mm]	Width tolerance [%]	r1	r2	r3	r4	r5
mm	25.4	5.0	10.5	5.3	8.8	228.6	76.2	±0.2	–	25.4	50.8	76.2	25.4
inch	1.0	0.2	0.41	0.21	0.35	9.0	3.0	±0.2	–	1.0	2.0	3.0	1.0

### Available standard materials<sup>4)</sup>

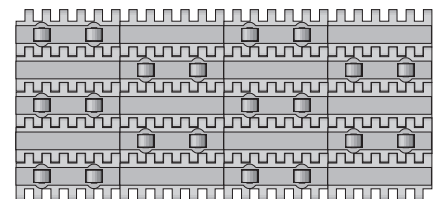
Belt		Pin		Nominal belt pull, straight		Weight		Width deviation	Temperature		Certificates	
Material	Color	Material	Color	[N/mm]	[lb/ft]	[kg/m²]	[lb/ft²]	[%]	[°C]	[°F]	FDA <sup>2)</sup>	EU <sup>3)</sup>
POM	BL	PBT	BL	20	1370	14.3	2.93	-0.31	-45/90	-49/194	●	●



Standard configuration



Configuration 1



Configuration 2

■ BL (Blue)

All measurements and tolerances apply at 21 °C; for temperature deviations please see Prolink manual chapter 4.4 "Temperature influence".

All imperial dimensions (inches) are rounded off.

<sup>1)</sup> Flex radii: r1 = side flex, r2 = front flex on roller, r3 = back flex on load bearing roller, r4 = back flex on Hold Down shoe, r5 = back flex on roller

<sup>2)</sup> Complies with FDA 21 CFR

<sup>3)</sup> Complies with (EU) 10/2011 and (EC) 1935/2004 regulations regarding the raw materials used and the migration thresholds

<sup>4)</sup> More materials and colors on request



MOVEMENT SYSTEMS

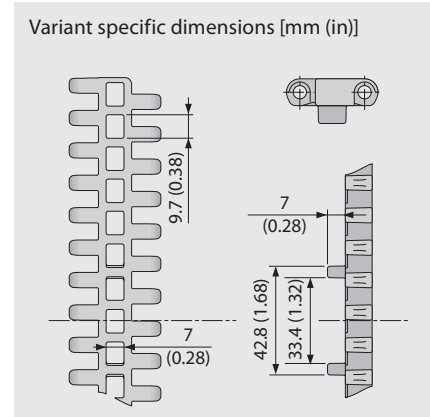
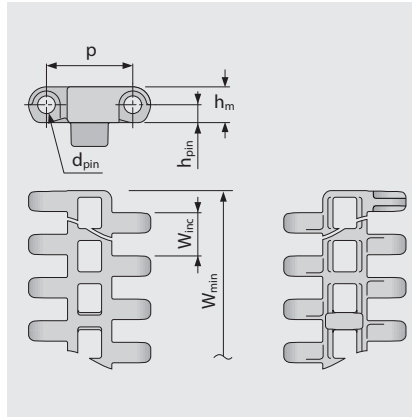
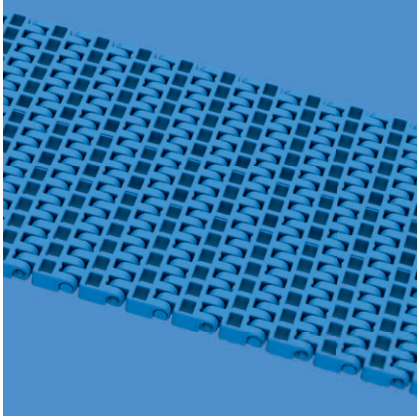
# SERIES 8 | BELT TYPES

siebling prolink  
modular belts

Straight running belt | Pitch 25.4 mm (1 in)

## S8.1-30 FLT GT | 30 % Opening | Flat top · Guiding Tabs

Open version (30 %) | Flat top surface | 53 % contact area (Largest opening: 9.7 x 7 mm/0.38 x 0.28 in) | Smooth surface | with guiding tabs for tracking of chain on long hygiene critical conveyors



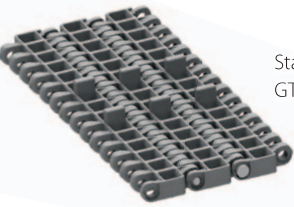
### Belt dimensions

	p	d <sub>pin</sub>	h <sub>m</sub>	h <sub>pin</sub>	h <sub>s</sub>	W <sub>min</sub>	W <sub>inc</sub>	W <sub>tol</sub>	Minimum flex radii <sup>1)</sup>				
	Pitch	Pin Ø	Thickness [mm]	Pin position [mm]	Height [mm]	Width min. [mm]	Width Increment [mm]	Width tolerance [%]	r1	r2	r3	r4	r5
mm	25.4	5.0	10.5	5.3	0.0	191.0	0.0	±0.2	–	25.4	50.8	76.2	25.4
inch	1.0	0.2	0.41	0.21	0.0	7.52	0.0	±0.2	–	1.0	2.0	3.0	1.0

### Available standard materials<sup>4)</sup>

Belt		Pin		Nominal belt pull, straight		Weight		Width deviation	Temperature		Certificates	
Material	Color	Material	Color	[N/mm]	[lb/ft]	[kg/m <sup>2</sup> ]	[lb/ft <sup>2</sup> ]	[%]	[°C]	[°F]	FDA <sup>2)</sup>	EU <sup>3)</sup>
POM	BL	PBT	BL	40	2741	9.1	1.86	-0.58	-45/90	-49/194	●	●
PP	BL	PP	BL	20	1370	5.9	1.21	0.0	5/100	41/212	●	●
PP	WT	PP	WT	20	1370	5.9	1.21	0.0	5/100	41/212	●	●

Mold to width available in: 191 mm (7.5 in)



Standard belt configuration (bottom side)  
GT on every row

■ BL (Blue), □ WT (White)

All measurements and tolerances apply at 21 °C; for temperature deviations please see Prolink manual chapter 4.4 "Temperature influence".

All imperial dimensions (inches) are rounded off.

<sup>1)</sup> Flex radii: r1 = side flex, r2 = front flex on roller, r3 = back flex on load bearing roller, r4 = back flex on Hold Down shoe, r5 = back flex on roller

<sup>2)</sup> Complies with FDA 21 CFR

<sup>3)</sup> Complies with (EU) 10/2011 and (EC) 1935/2004 regulations regarding the raw materials used and the migration thresholds

<sup>4)</sup> More materials and colors on request



MOVEMENT SYSTEMS

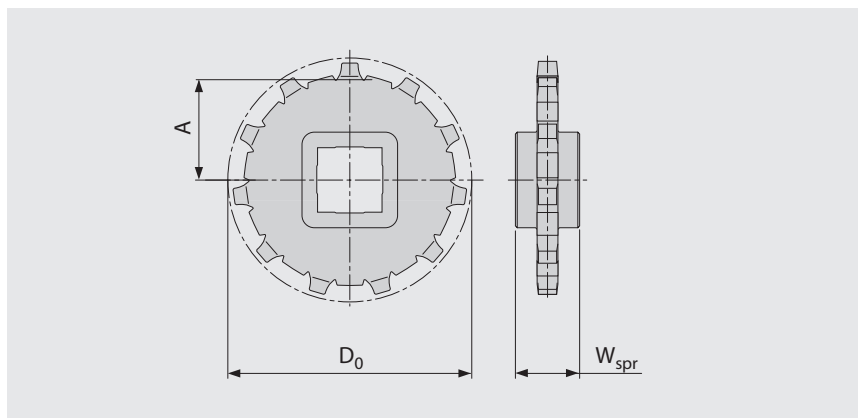
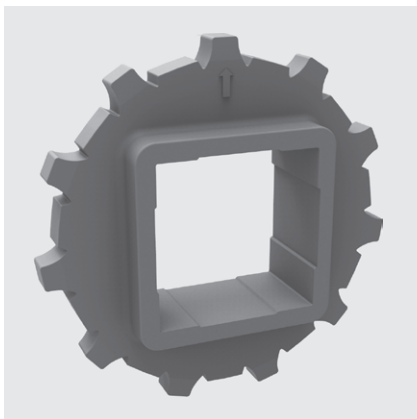
# SERIES 8 | SPROCKETS

**siebling prolink**  
modular belts

Straight running belt | Pitch 25.4 mm (1 in)

## S8 SPR | Sprockets

Deep tooth engagement for heavy loads



### Main dimensions

Sprocket size (Number of teeth)		Z11	Z12	Z15	Z18	Z19
W <sub>spr</sub>	mm	25.0	25.0	25.0	25.0	25.0
	inch	0.98	0.98	0.98	0.98	0.98
D <sub>0</sub>	mm	90.2	99.5	122.7	148.5	155.7
	inch	3.55	3.92	4.83	5.85	6.13
A <sub>max</sub>	mm	39.9	44.5	56.1	69.0	72.6
	inch	1.57	1.75	2.21	2.72	2.86
A <sub>min</sub>	mm	38.3	43.0	54.9	68.0	71.6
	inch	1.51	1.69	2.16	2.68	2.82

### Shaft bores (● = Round, ■ = Square)

30	mm	●		●	●	
40	mm	■	■	●/■		■
60	mm			■		■
80	mm					■
1	inch		●			●
1.25	inch		●			●
1.5	inch	●/■	■	■		■
2	inch				●	
2.5	inch					■

Material: PA, Color: LG

■ LG (Light gray)

All measurements and tolerances apply at 21 °C; for temperature deviations please see Prolink manual chapter 4.4 "Temperature influence".

All imperial dimensions (inches) are rounded off.

For detailed sprocket and shaft dimensions see appendix 6.3.



MOVEMENT SYSTEMS

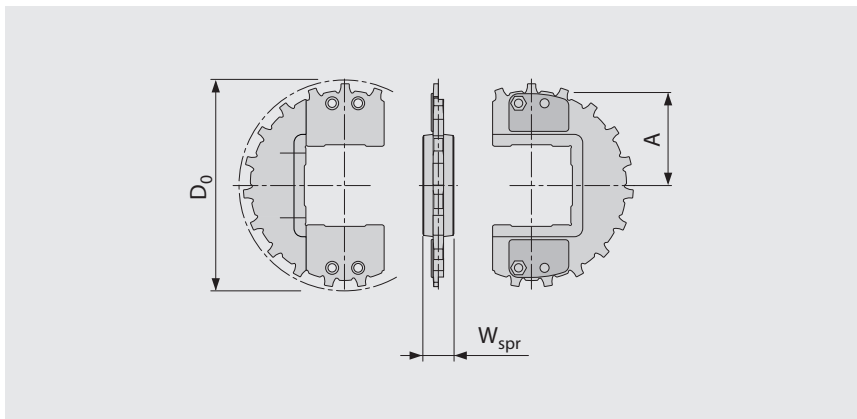
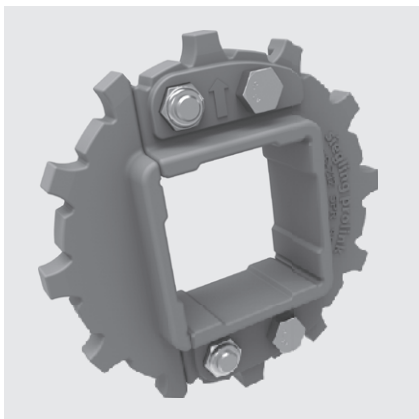
# SERIES 8 | SPLIT SPROCKETS

siegling prolink  
modular belts

Straight running belt | Pitch 25.4 mm (1 in)

## S8 SPR-SP | Split Sprockets

Easy assembly without dismounting shaft | Deep tooth engagement for heavy loads



### Main dimensions

Sprocket size (Number of teeth)		Z12	Z16	Z19	Z22
W <sub>spr</sub>	mm	25.0	25.0	25.0	25.0
	inch	0.98	0.98	0.98	0.98
D <sub>0</sub>	mm	99.5	132.2	155.7	181.2
	inch	3.92	5.20	6.13	7.13
A <sub>max</sub>	mm	44.5	60.8	72.6	85.4
	inch	1.75	2.39	2.86	3.36
A <sub>min</sub>	mm	43.0	59.7	71.6	84.5
	inch	1.69	2.35	2.82	3.33

### Shaft bores (● = Round, ■ = Square)

40	mm	■	●/■	●/■	
60	mm		●/■	●/■	
90	mm				■
1	inch	●			
1.5	inch		●/■	●/■	
2.5	inch		●/■	●/■	

Material: PA, Color: LG

■ LG (Light gray)

All measurements and tolerances apply at 21 °C; for temperature deviations please see Prolink manual chapter 4.4 "Temperature influence".

All imperial dimensions (inches) are rounded off.

For detailed sprocket and shaft dimensions see appendix 6.3.



MOVEMENT SYSTEMS

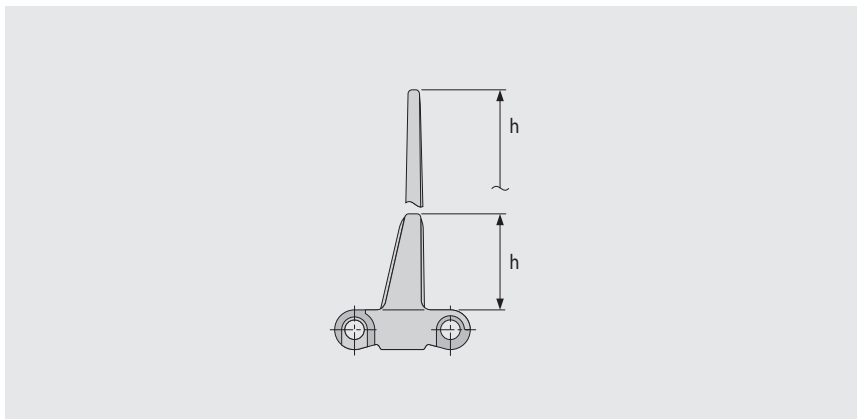
# SERIES 8 | PROFILES

Straight running belt | Pitch 25.4 mm (1 in)

**siegling prolink**  
modular belts

## S8-0 FLT PMU

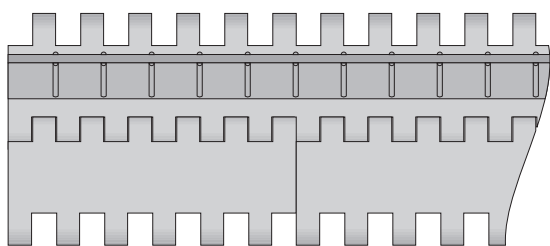
Profiles with reinforced base to handle high loads



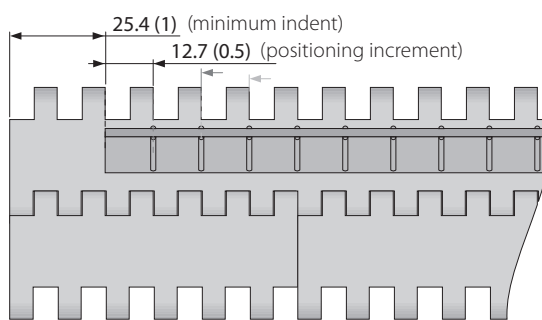
### Basic data

Material	Color	Height (h)	
		25.4 mm 1 inch	76 mm 3 inch
POM	BL	●	●
POM-CR	AT	●	●
PP	BL	●	●
PP	LG	●	●
PP	WT	●	●

Molded width: 152 mm (6.0 in)



Standard configuration S8-0 FLT PMU



Indent configuration S8-0 FLT PMU

■ AT (Anthracite), ■ BL (Blue), ■ LG (Light gray), □ WT (White)

All measurements and tolerances apply at 21 °C; for temperature deviations please see Prolink manual chapter 4.4 "Temperature influence".

All imperial dimensions (inches) are rounded off.

Note: Use of accessory in a belt may impact on the minimum design radii. Please see chapter 6.3 for further information.



MOVEMENT SYSTEMS

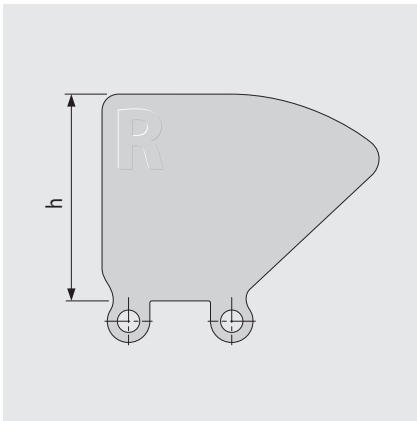
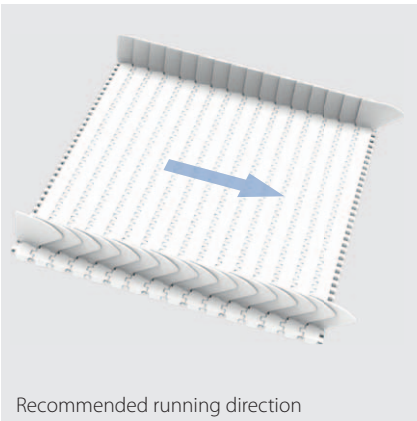
# SERIES 8 | SIDE GUARDS

siegling prolink  
modular belts

Straight running belt | Pitch 25.4 mm (1 in)

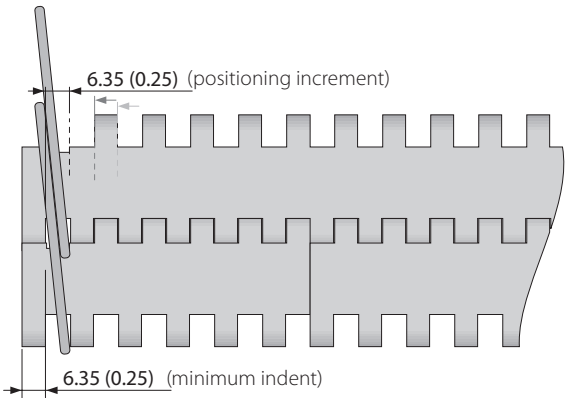
## S8 SG | Side guards

For retention of bulk products (for S8-0 FLT and S8.1-30 FLT only)



### Basic data

Material	Color	Height (h)			
		25 mm 1 inch	50 mm 2 inch	75 mm 3 inch	100 mm 4 inch
PE	LB	●	●	●	●
PE	WT	●	●	●	●
PE-MD	BL	●	●		
PP	LB	●	●	●	●
PP	WT	●	●	●	●



■ BL (Blue), ■ LB (Light blue), □ WT (White)

All measurements and tolerances apply at 21 °C; for temperature deviations please see Prolink manual chapter 4.4 "Temperature influence".  
All imperial dimensions (inches) are rounded off.

Note: Use of accessory in a belt may impact on the minimum design radii. Please see chapter 6.3 for further information.

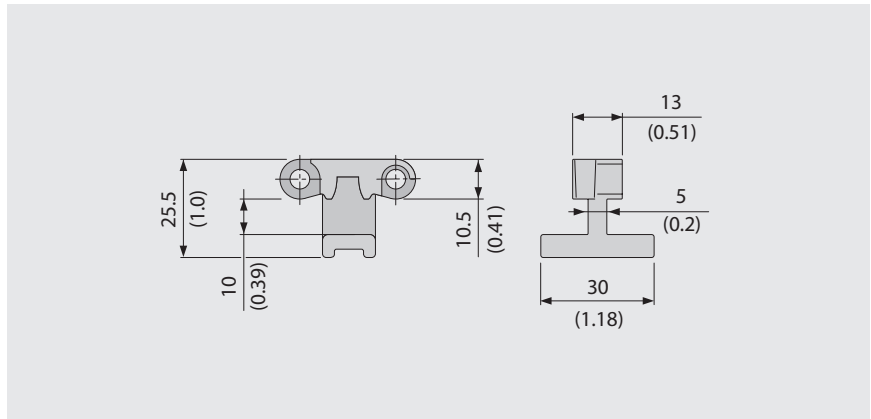
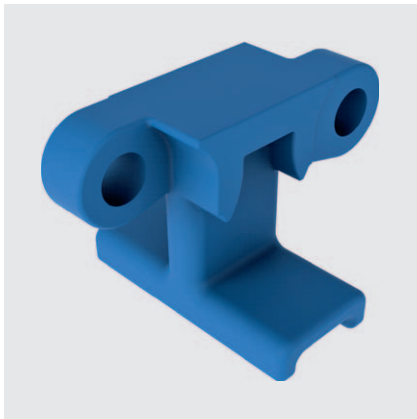
# SERIES 8 | HOLD DOWN TABS

siebling prolink  
modular belts

Straight running belt | Pitch 25.4 mm (1 in)

## S8 HDT | Hold Down Tabs

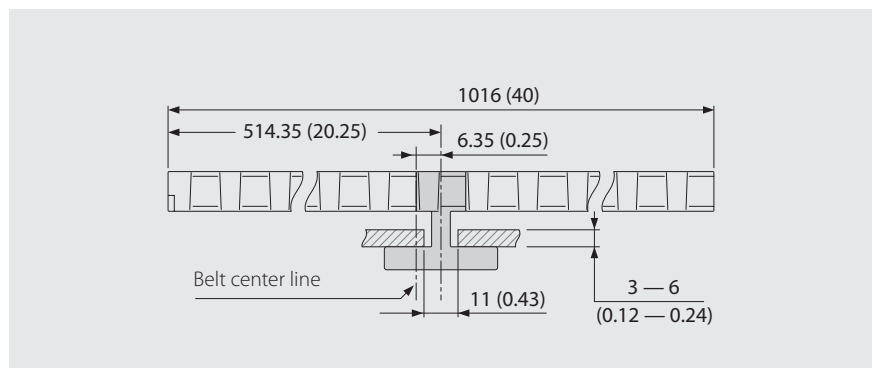
Used on wider belts to prevent lift an swan neck conveyors | To improve strength, stability and cleanability they are moulded on a narrow module



### Basic data

Material	Color
POM	BL

### Example



Using Hold Down Tabs results in constraints with regards to sprocket and shaft size to ensure sufficient clearance to the shaft.

### Sprocket options using HDT

Sprocket size (Number of teeth)	Maximum bore round		Maximum bore square	
	[mm]	[inch]	[mm]	[inch]
Z11	40	1.5	30	1.25
Z12	45	1.75	35	1.5
Z15	70	2.75	55	2.0
Z18	95	3.5	70	2.75
Z19	100	3.75	75	3.0

■ BL (Blue)

All measurements and tolerances apply at 21 °C; for temperature deviations please see Prolink manual chapter 4.4 "Temperature influence".

All imperial dimensions (inches) are rounded off.

Note: Use of accessory in a belt may impact on the minimum design radii. Please see chapter 6.3 for further information.



MOVEMENT SYSTEMS

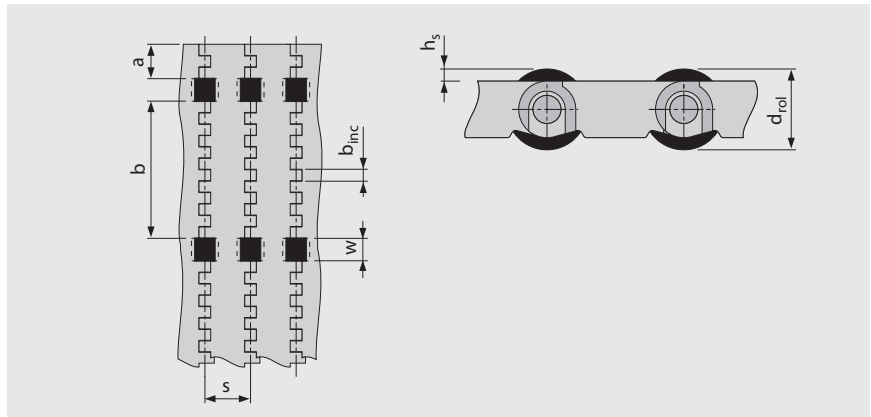
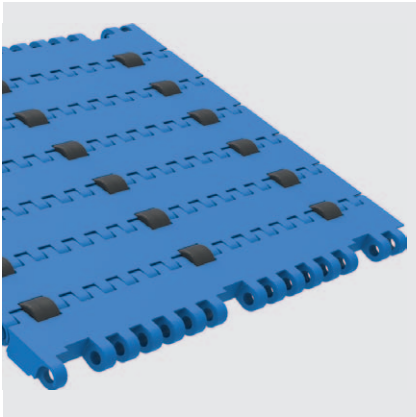
# SERIES 8 | PRR

Straight running belt | Pitch 25.4 mm (1 in)

**siegling prolink**  
modular belts

## S8 PRR | Pin Retained Rollers

For applications where low back pressure accumulation or product separation is required



- For low back pressure wearstrips are to be positioned between the rollers
- For product separation the wearstrips are to be positioned below the rollers
- For all materials and surfaces
- Rollers available in POM BK

### Dimensions

<b>w</b>	12.7 (0.5)	Roller cut out width (roller width 12 mm (0.47 in))
<b>h<sub>s</sub></b>	2.25 (0.9)	Height of rollers above surface
<b>d<sub>rol</sub></b>	15 (0.59)	Roller diameter
<b>a</b>	19.1 (0.8)	Minimum indent
<b>b</b>	76.2 (3.0)	Standard distance between rollers across belt width
<b>b<sub>inc</sub></b>	6.35 (0.25)	Roller distance increment
<b>s</b>	25.4 (1.0)	Standard roller spacing in travel direction (every pitch)
<b>n<sub>rol</sub></b>	Number of rollers across belt width	
<b>W<sub>B</sub></b>	Belt width	

### Allowable belt pull

To determine admissible belt pull calculate effective belt width  $W_{B,ef}$  by

$$W_{B,ef} = W_B - (w \times n_{rol})$$

Example:  $W_B = 228.6 \text{ mm (9.0 in)}$ ;  $A = 12.7 \text{ mm (0.5 in)}$ ;  $I = 3$

$$W_{B,ef} = 228.6 - (3 \times 12.7) = 190.5 \text{ mm}$$

$$W_{B,ef} = 9.0 - (3 \times 0.5) = 7.5 \text{ in}$$

Note sprocket must not be placed inline with rollers.

Coefficient of friction between belt and conveyed product in accumulation mode  $\mu_{acc} = 0.04$ , i.e. the accumulation pressure is approx. 4% of the weight of the backed up product.

All measurements and tolerances apply at 21 °C; for temperature deviations please see Prolink manual chapter 4.4 "Temperature influence".

All imperial dimensions (inches) are rounded off.

Note: Use of accessory in a belt may impact on the minimum design radii. Please see chapter 6.3 for further information.



MOVEMENT SYSTEMS

# LEGEND

① Series	
S1 ... S15	
② Open area/Sprocket size	
Percentage open area	
Format: xx	
E.g. 20 = 20 %	
For sprockets: number of teeth	
Format: "Z"xx	
E.g. Z12 = 12 teeth	
③ Surface pattern	
BSL	Base module for slider
CTP	Cone top
CUT	Curved top
FLT	Flat top (smooth)
FRT-OG	Friction top without High Grip insert
FRT(X)	Friction top (Design X)
GRT	Grid top
LRB	Lateral rib
MOD	Modified module shape
NCL	No cling
NPY	Negative pyramid
NSK	Non skid
NTP	Nub top (round studs)
RAT	Radius top
RRB	Raised rib
RSA	Reduced surface area
RTP	Roller top
SRS	Slip-resistant surface

④ Type	
A90	Angle 90° to conveying direction
BPU	Bucket profile
CCW	Counter clockwise
CLP	Clip
CM	Center module
CW	Clockwise
FPL	Finger plate
IDL	Idler
PIN	Coupling rod
PMC	Profile module center
PMU	Profile module universal
PMU lxx	Profile module universal with indent xx = indent in mm
RI	High Grip insert
RTR	Retaining ring
SG	Module with sideguard
SLI	Slider
SML	Side module, left
SMR	Side module, right
SMU	Side module, universal/both sides
SPR	Sprocket
TPL	Turning panel, left
TPR	Turning panel, right
UM	Universal module
⑤ Style	
BT	Bearing tab
DR	Double row sprocket
F1, F2, F3 ...	Collapse factor modules
G	Guided
GT	Guiding tabs
HD	Hold Down
RG	Reversed guided
SG	Side guard
SP	Split sprocket
ST	Strong

⑥ Material	
PA	Polyamide
PA-HT	Polyamide high temperature
PBT	Polybutylentere-phthalate
PE	Polyethylene
PE-MD	PE metal detectable
POM	Polyoxymethylene (Polyacetal)
POM-CR	POM cut resistant
POM-HC	POM highly conductive
POM-MD	POM metal detectable
POM-PE	POM side modules + PE center modules
POM-PP	POM side modules + PP center modules
PP	Polypropylene
PXX-HC	Self-extinguishing highly conductive material
R1	TPE 80 Shore A, PP
R2	EPDM 80 Shore A, vulcanized
R3	TPE 70 Shore A, POM
R4	TPE 86 Shore A, PP
R5	TPE 52 Shore A, PP
R6	TPE 63 Shore A, POM
R7	TPE 50 Shore A, PP
R8	TPE 55 Shore A, PE
SER	Self-extinguishing TPE
SS	Stainless steel
TPC1	Themoplastic Copolyester
-HA	Supports the HACCP concept
-HW	High Wear resistant material

⑦ Color*		
AT	Anthracite	
BG	Beige	
BK	Black	
BL	Blue	
DB	Dark blue	
GN	Green	
LB	Light blue	
LG	Light gray	
OR	Orange	
RE	Red	
TQ	Turquoise	
TR	Transparent	
UC	Uncolored	
WT	White	
YL	Yellow	

⑧ Height/Diameter/ Bore size and style	
Height in mm (in)	
Format: Hxxx	
Pin diameter in mm (in)	
Format: Dxxx	
Bore size: SQ (= square) or RD (= round) either in mm or inches	
Format: SQxxMM or RDxxIN	

⑨ Length/Width	
Pins Length in mm (in)	
Format: Lxxx	
Module width in mm (in)	
Format: Wxxx	

\* For each series' standard colors please refer to the table of materials for each belt (chapter 1.2). A number of other colors are available on request. Colors can vary from the original due to the print, production processes or material used.



MOVEMENT SYSTEMS