

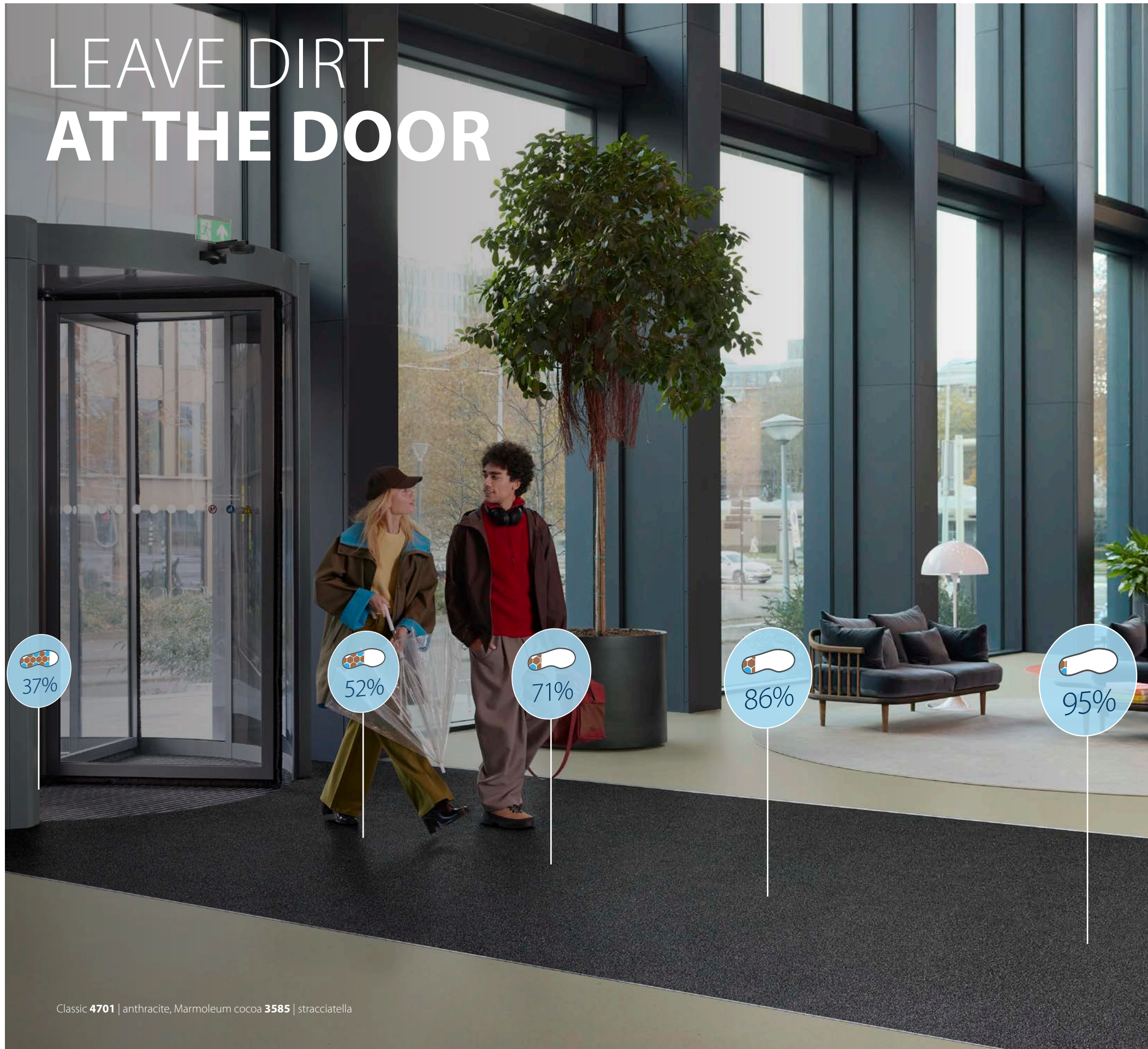


coral[®]

creating better environments

forbo
FLOORING SYSTEMS

LEAVE DIRT AT THE DOOR



Classic 4701 | anthracite, Marmoleum cocoa 3585 | stracciatella

CORAL® ENTRANCE FLOORING SYSTEMS, MAKING YOUR BUILDING LOOK EVEN BETTER

We have been the world leader in textile entrance flooring for over 50 years, so there is nothing we don't know about stopping dirt and moisture from coming into your building. First impressions count. When people enter your building, they should like what they see. But you also have the practical pressure of keeping your building floors clean and keeping your visitors safe. Our Coral entrance flooring systems do all of this, and more.

Every entrance has its own demand, since it depends on whether you are in a main street office area or a primary school. Our Coral collection consists of many different collections, each of them with their own focus area, like dirt scraping or moisture take-up. The icons help guide you through the options.

Besides functionality, you can also choose different installation options: sheet, tiles, or mats. Last but not least, the choice for the environment can help you make the final decision. We have several products with regenerated yarns.

Whatever collection you choose, you know you have the best quality with the best functionality.



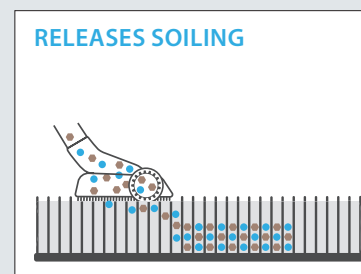
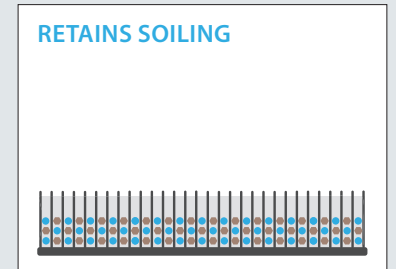
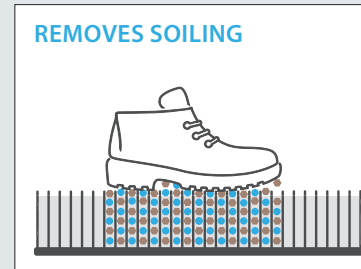
DON'T LET DIRT AND MOISTURE **RUIN YOUR BUILDING DESIGN**

A WELL-DESIGNED AND INNOVATIVE ENTRANCE FLOORING SYSTEM WILL:

- reduce the risk of slip injuries
- prolong the life of the interior floor finish
- reduce the cost of ongoing maintenance
- make the entrance look good and inviting
- contribute to an environmentally friendly building due to less use of cleaning detergents for maintaining the following floor

There is a lot of time and money spent on the visual appearance of a building. Architects and interior designers connect the atmosphere of a building to its users and visitors. It is often forgotten that this design can only be retained when the floor stays clean and undamaged.

The Coral collections are designed with our own yarn system that contribute to scraping dirt, wiping off moisture, let the entrance flooring still look clean and stays active after years and years of use. We use the 4R principle for this, Coral;

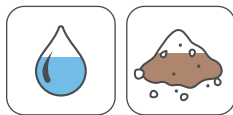


CHOOSE THE RIGHT ENTRANCE SYSTEM FOR YOUR SITUATION

A functional entrance flooring system is chosen based on the location of the building (which determines the type of dirt), the amount of footfall (how many people walk over it), the type of people that go over the mat (e.g., business people or school children), and the type of entrance in the building (large, small, inside, outside).

Choose the right product for the right area.

The icons in every collection show the dirt-scraping capacity and the moisture uptake. This helps you make the right choice.



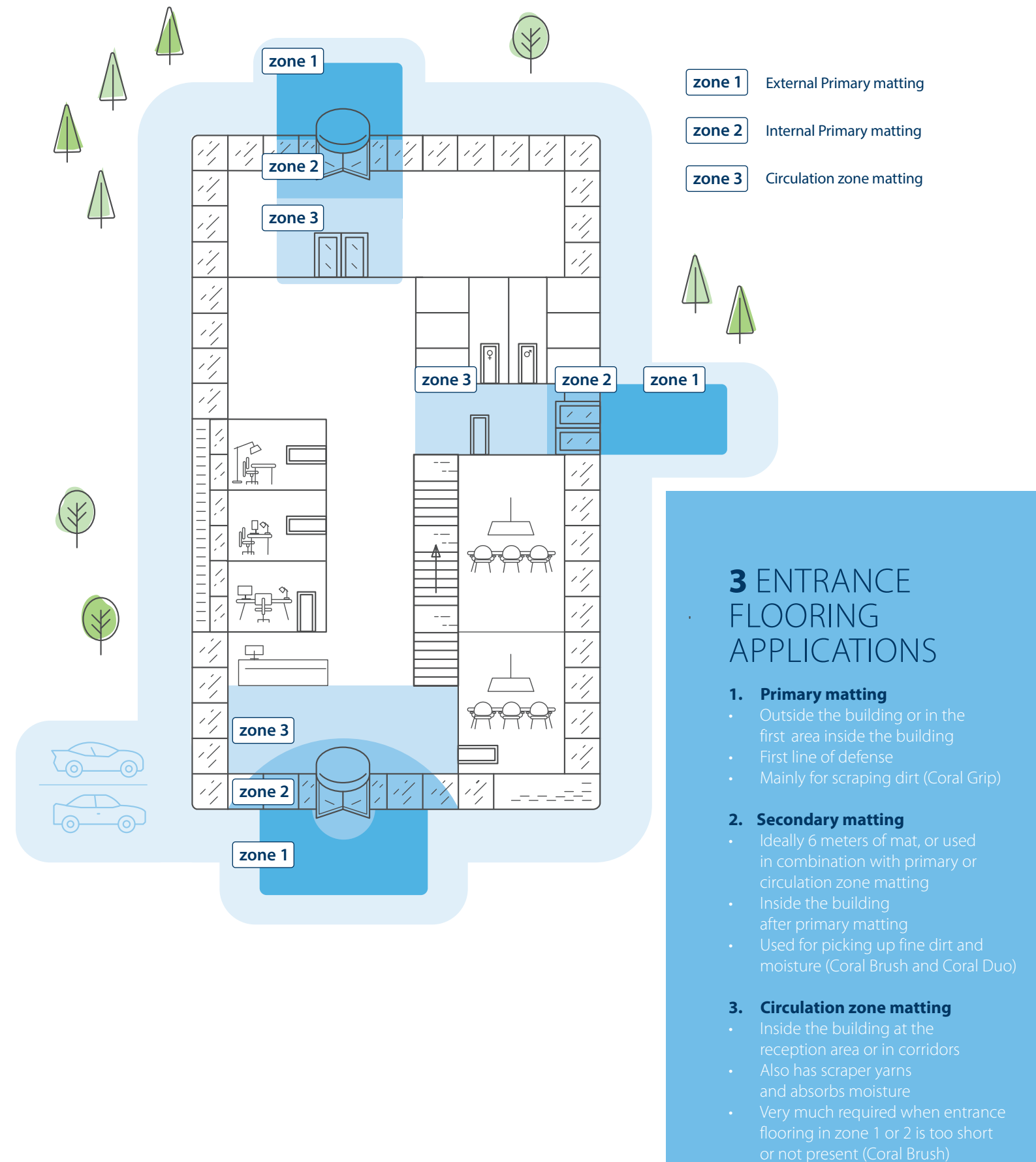
STOPS UP TO 95% OF DIRT AND
MOISTURE WALKED INTO A BUILDING



Good for the environment.

Good for your daily environment.

From how they're made to how they perform, Forbo flooring is truly sustainable. With its eco, safety, design, and cleaning credentials, Forbo flooring is good for buildings, good for people, and good for the planet. We help people work, live, and relax in a better environment.

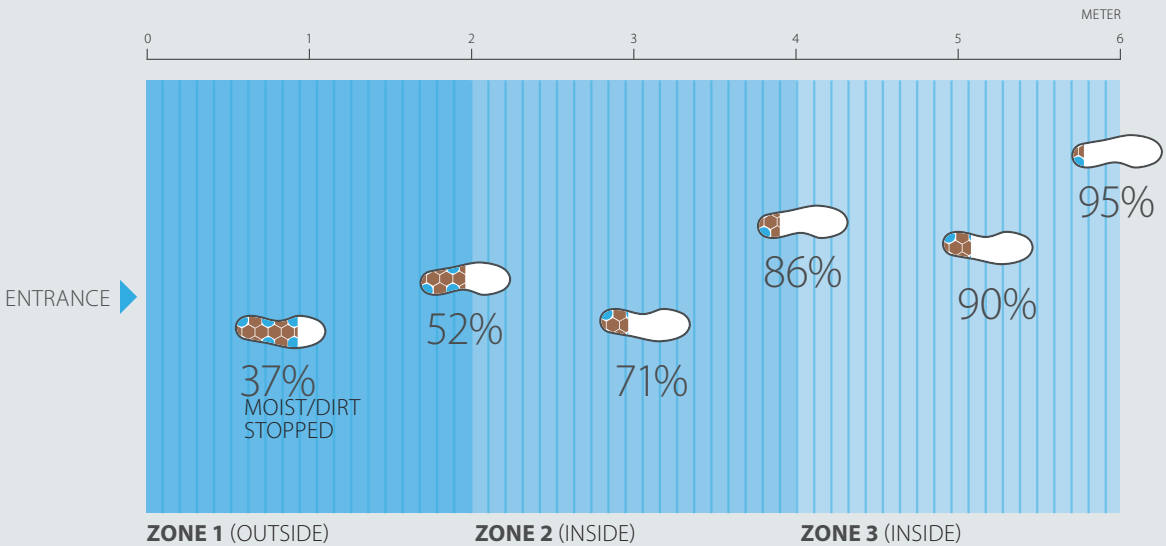




WIPE OFF FEET & WHEELED TRAFFIC IN 6 METERS

Coral entrance flooring systems can take up to 95% of all dirt and moisture when placing the ideal entrance flooring system of 6 meters. These 6 meters can already start outside and can go all the way to the reception area. Just a mat behind the door will not do the trick. People will not stop to wipe their feet, so while moving, the mat should do its work.

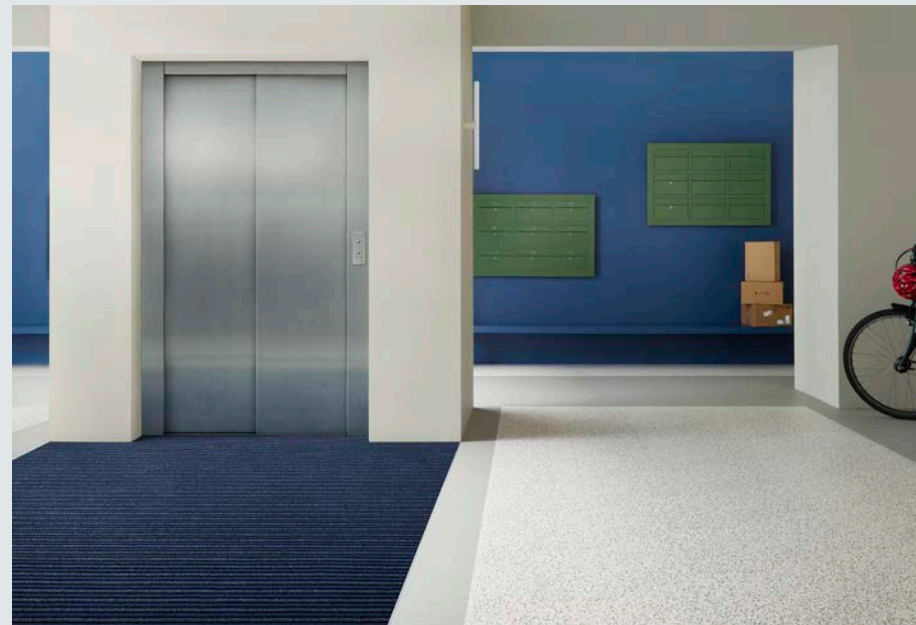
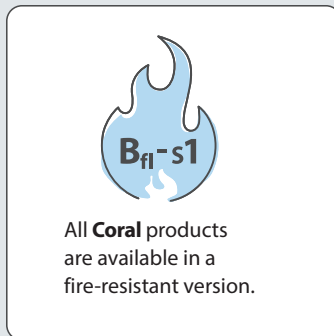
AN ENTRANCE FLOORING SYSTEM CONSIST OF ZONES



EVERY ENTRANCE IS ALSO A **FIRE EXIT**

With Coral, enhanced fire safety doesn't come at an extra cost—it comes as a standard. A safe and accessible entrance begins with the right flooring. All collections are Bfl-s1 classified, which means they are engineered to provide the highest level of fire safety in commercial and public buildings. Meeting the most stringent European standards, it ensures a very limited contribution to fire and smoke development—two critical factors in maintaining visibility and protecting escape routes during an emergency.

By significantly reducing smoke emissions and slowing fire spread, Bfl-s1 entrance flooring helps keep entrances, exits, and evacuation pathways accessible when every second counts. This added layer of protection supports building safety strategies, giving visitors and building managers greater peace of mind. Combined with its durability and aesthetic versatility, Bfl-s1 performance makes our entrance flooring a reliable choice for any environment where safety cannot be compromised.



Duo 9237 | deep fjord, Sarlon 90401 | grey mini terrazzo, 90752 | grey halo contour

PREVENT SLIPS AND **TRIPS HAZARDS**

Moisture brought in from outside is one of the most common causes of slips and falls in building entrances. Coral entrance flooring is engineered to absorb and scrape away moisture effectively, ensuring that the following floor surfaces remain dry and safe to walk on. By capturing water at the source—right under visitors' feet—Coral significantly reduces the risk of accidents caused by wet shoes and slick surfaces.

With Coral in place, there is no need for temporary warning signs or "caution – slippery" boards cluttering the entrance. The flooring itself provides consistent, reliable protection throughout the day, creating a cleaner, safer transition into the building. Whether in busy public spaces or commercial environments, Coral helps maintain secure footing for everyone who enters, offering peace of mind and a professional, hazard-free first impression.



Luxe 2916 | garnet



DURABLE SOLUTIONS FOR THE HIGHEST DEMANDS

In entrance areas with heavy traffic, floor coverings are tested to their maximum capacity. The Coral entrance flooring collection offers high-performance solutions in various colors and formats that can be combined perfectly. Each building needs a working entrance flooring. To prove Coral is doing its job, we show the Berlin TV Tower in

Germany, which is entered by 1.2 million visitors each year. For this reason, a decision was made to install more than 700 square meters of Coral in tile format. Worldwide, Coral can be found in large public buildings, shopping centers, schools and universities, hospitals, hotels, but also smaller entrances—even in private homes.

Product construction

Coral entrance flooring products are equipped with a vinyl backing. The strong middle layer serves as a carrier for the various functional yarns, which guarantee the highest effectiveness. Thanks to specially designed yarn construction, Coral products are able to retain dirt and moisture particles brought in, but also easily release them during cleaning, ensuring a long-lasting, well-maintained appearance.

The different Coral products consist of various types of yarn, and their combination fulfills a dual function. On the one hand, dirt and moisture are effectively absorbed; on the other hand, a special scraping yarn brushes shoe soles thoroughly clean. Each product variant has a specific yarn combination to provide the right solution for the diverse requirements of any entrance area. The yarn construction and functionality make Coral entrance flooring one of a kind.

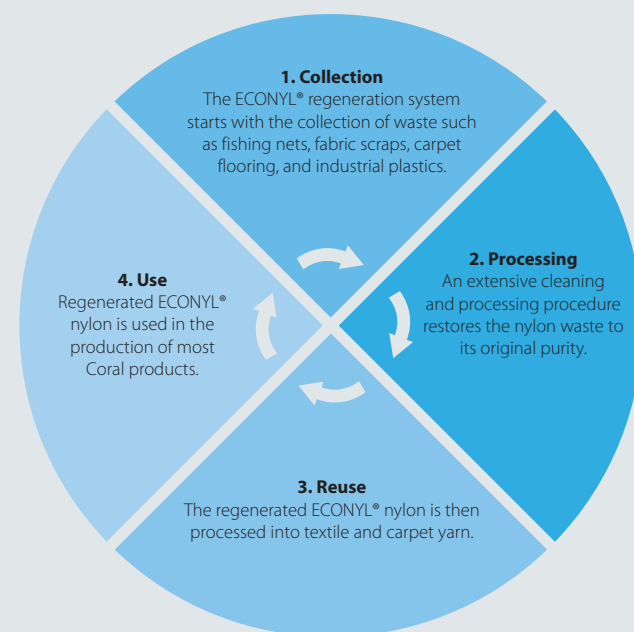


Classic 4730 | raven black

ECONYL YARN

The principles of the circular economy guide our actions.

By using regenerated ECONYL® yarn, we minimize environmental impact. ECONYL® yarn is made from processed industrial and production waste. For example, discarded fishing nets from the world's oceans serve as a valuable recycling source within the circular economy.

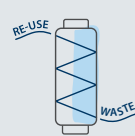


Commitment to the environment

Sustainability is a central priority at Forbo Flooring. From the selection of raw materials to the operation of our production facilities and the manufacturing and use of our floor coverings, we follow the philosophy of creating better environments. For Coral entrance flooring systems, the careful use of resources and the sustainable production of the products are key focus areas. We have third-party-verified Environmental Product Declarations (EPDs) for our main collections Brush and Duo.



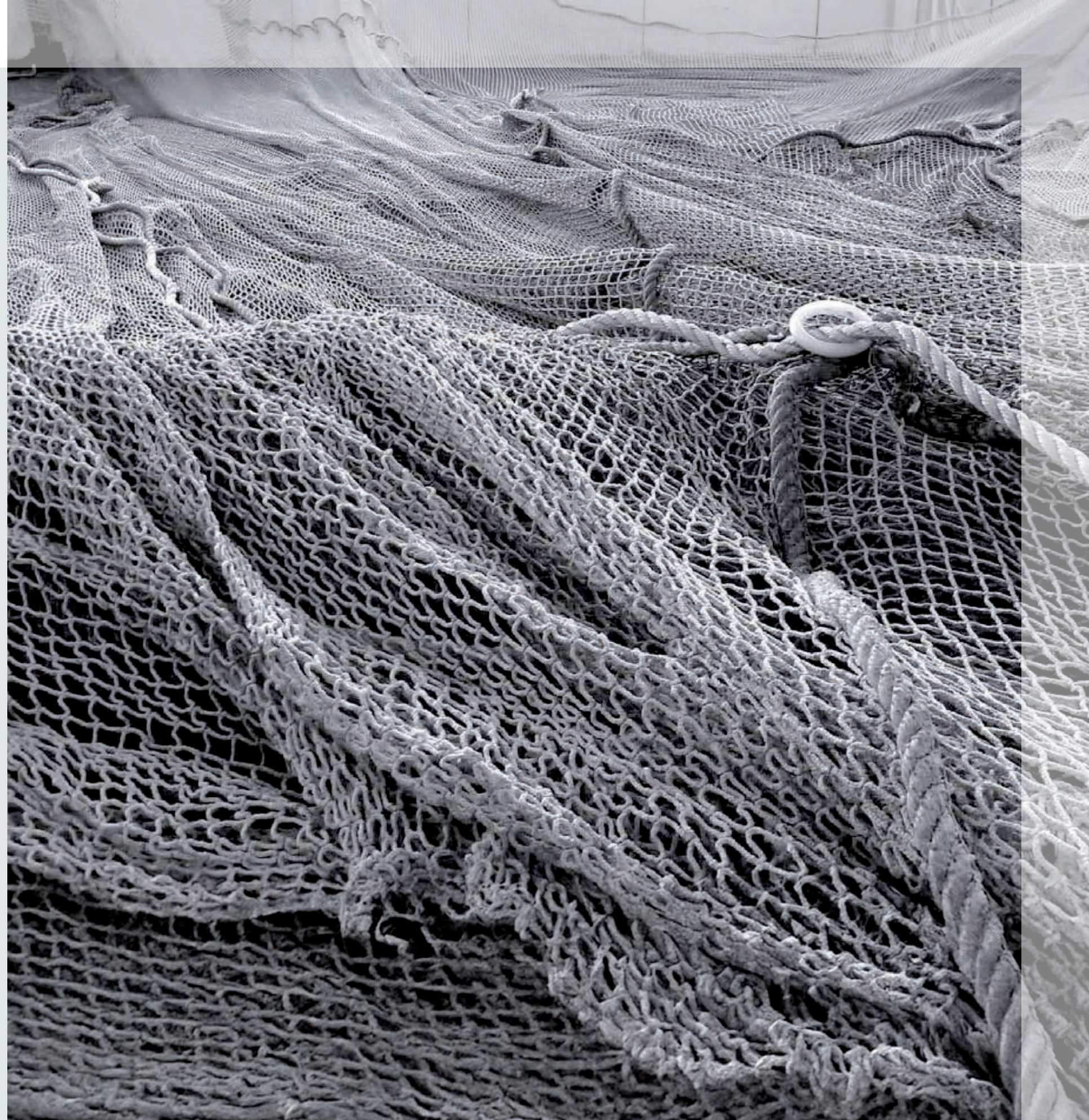
Produced with 100% green electricity from renewable resources.



All waste yarn from Coral production is re-used by the yarn supplier.

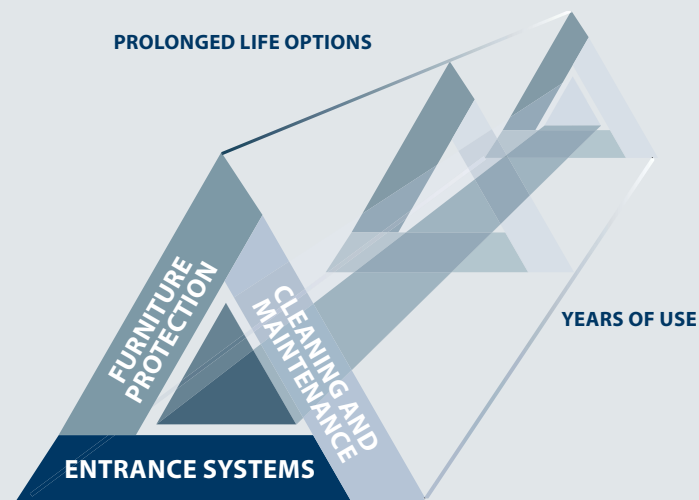


Most Coral entrance-flooring products use ECONYL® yarn, made from used and abandoned fishing nets.



THE ESSENTIAL CORNER OF FLOOR PROTECTION

Entrance flooring forms the first line of defense in protecting all the floors in your building. It is part of a triangle approach that also includes proper cleaning and maintenance and the use of furniture leg protection. When any one of these three elements is missing, keeping your floors in good condition becomes a challenge. This can lead to higher maintenance costs and a shorter flooring lifespan, resulting in more frequent replacements.



SAVE MONEY WITH ENTRANCE FLOORING

EXAMPLE CALCULATION

Floor area without entrance flooring systems
Typical cleaning frequency: 5 times per week

Floor area with a Coral entrance flooring zone (minimum walking depth of 1.50 m)
Possible cleaning frequency: 4 times per week*

*With a longer Coral entrance mat, equipping all entrance areas, and proper cleaning of the entrance flooring zones, the number of cleanings per week can be further reduced.

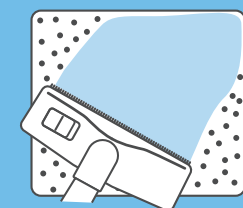
Conclusion:

Using a Coral entrance flooring zone in the recommended minimum size already reduces cleaning costs by approximately 20%.



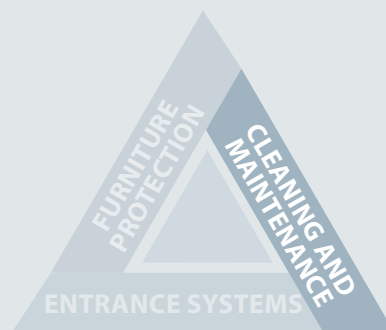
REDUCE YOUR FLOOR CLEANING COSTS BY 65%

A Coral entrance system with a 3-step clean-off zone will cut your future maintenance costs by stopping up to 95% of walked-in dirt and moisture from reaching your building floors. This reduces your building's floor-cleaning costs by up to 65% and prolongs the life of your floors. The average maintenance cost of commercial floors is 86% of the total life-cycle cost.



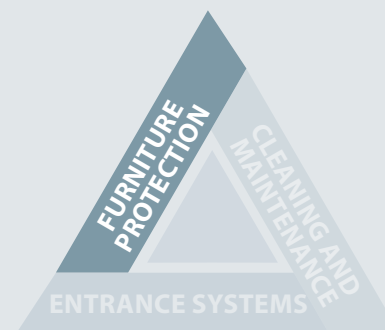
Protect your support

Good entrance matting is essential, as no building can do without it if you want to keep your floor protected. It ensures that the biggest threats to your floor's appearance are dealt with before they even affect it.



Cleaning and maintenance

One element of the triangle is cleaning and maintenance. When you take care of your floor and clean it when necessary, it will stay beautiful for longer. Good cleaning and maintenance will save time and money.



Let furniture move smoothly

Using the right furniture-leg protection for tables and chairs will safeguard your floor at all times. Applying protection to the base of your furniture will help keep the new appearance of your floor for longer.

coral® brush

A STRONG AND SOLID PERFORMER THAT FITS IN ANYWHERE

Coral Brush is suitable for all types of entrance areas, absorbing moisture and removing dry soiling as the weather demands. This collection works well with any interior design, serving as an eyecatcher or self-effacing support for the rest of the floor design. Coral Brush is made of three yarns: capillary yarns to absorb moisture, active dirt-scraping yarns, and heavy-duty texture yarns that can withstand the heaviest pounding. The space between the yarns serves to hide dirt, which ensures a clean appearance for longer.

- Good all-rounder that keeps out moisture and dirt
- Made with ECONYL® 100% regenerated yarns
- Appealing colors complement every floor
- Complies with the highest fire class standard: Bfl-s1
- Suitable for the toughest commercial use
- Ideal for inside entrance and circulation areas
- Produced with phthalate-free technology

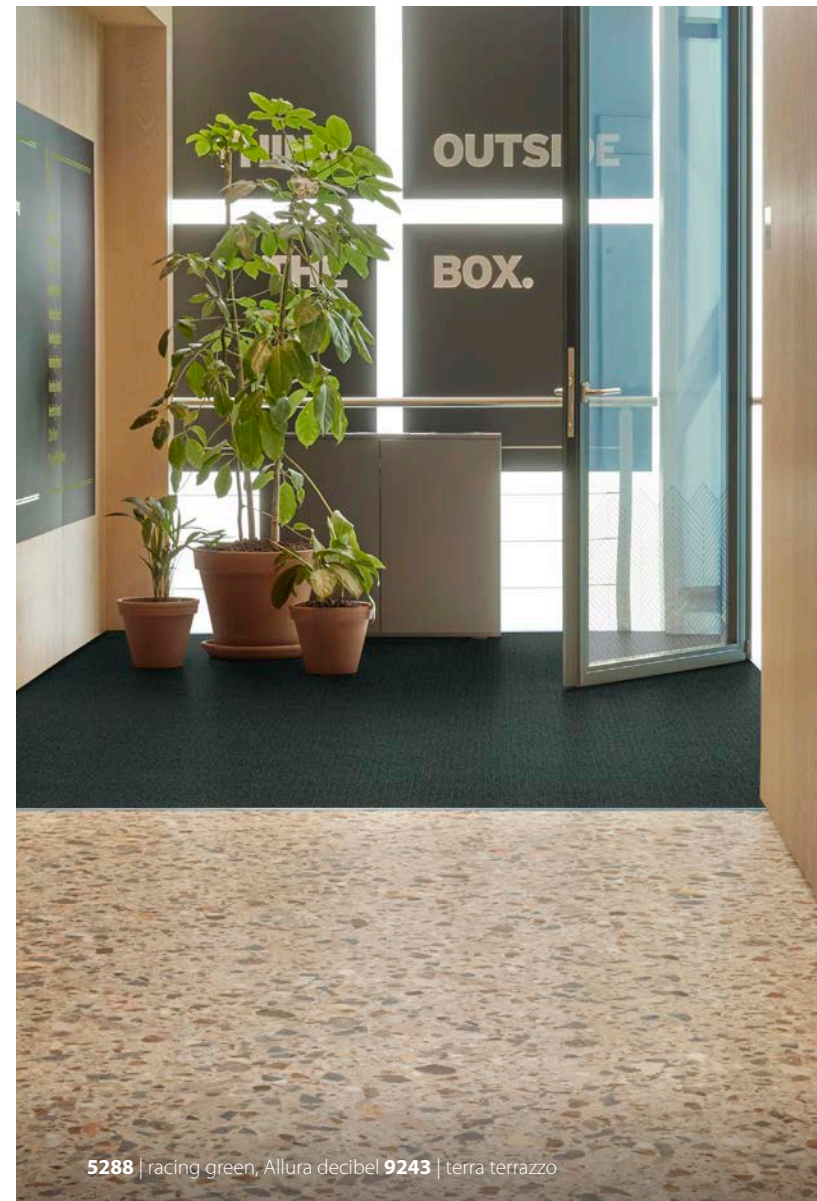


TILES

Coral brush is available in tiles—for increased flexibility and reduced installation waste.

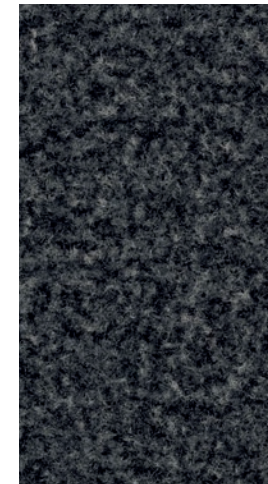


THE CORAL BRUSH RANGE IS ALSO AVAILABLE IN TILE FORMAT FOR INCREASED FLEXIBILITY.

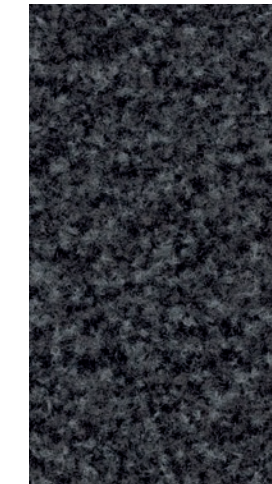


5288 | racing green, Allura decibel 9243 | terra terrazzo

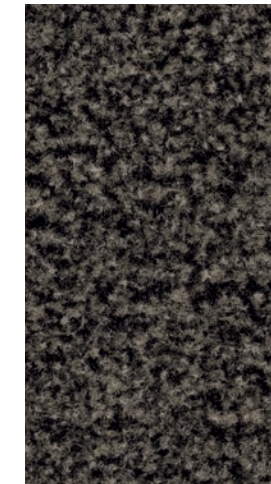
coral® brush



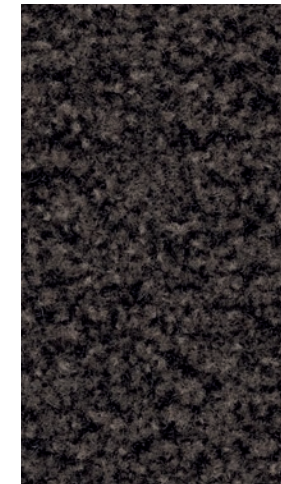
5221 | hurricane grey LRV 3%



5235 | whisper grey LRV 3%



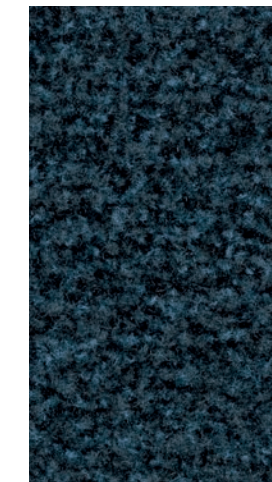
5234 | fossil grey LRV 6%



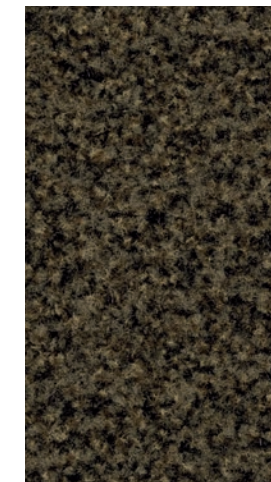
5214 | granite brown LRV 4%



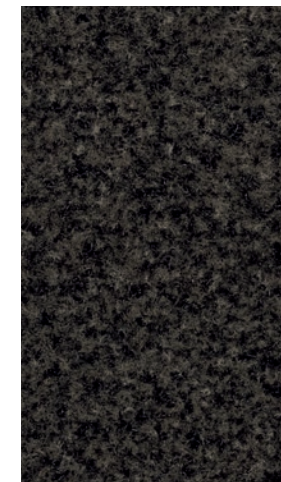
5210 | asphalt grey LRV 2%



5232 | glacier blue LRV 3%



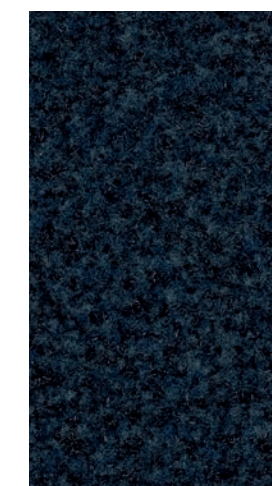
5284 | olive green LRV 4%



5215 | charcoal grey LRV 3%



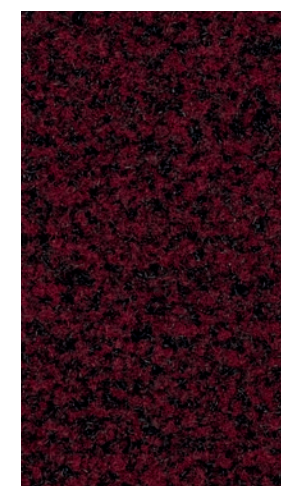
5230 | vulcan black LRV 1%



5227 | stratos blue LRV 2%



5288 | racing green LRV 1%



5203 | vintage red LRV 2%

coral® duo

THE BEST PROTECTION AGAINST DIRT AND MOISTURE FOR EVERY SPACE

A short entrance zone and still keeping your floor covering clean don't go together, do they? Well, yes, they can. Coral Duo is the go-to solution when you need maximum dirt removal, unrivaled dirt retention, and exceptional moisture absorption all in the short distance of just a couple of steps. Research has shown that Coral Duo retains 10% more dirt in the first few meters than any other textile entrance flooring solution on the market, which makes it the best choice for smaller entrances. Featuring a ribbed construction, Coral Duo is not only functional, it also provides an aesthetically pleasing aspect to any entrance area and is easy to combine with our Coral Brush and Coral Classic collections in larger entrance spaces.

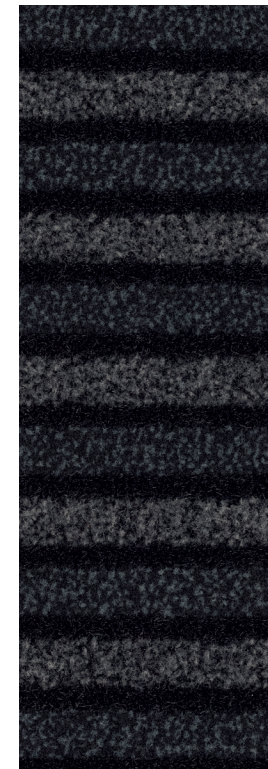
- Excellent solution for every entrance
- Made with ECONYL® 100% regenerated yarns
- Produced with phthalate-free technology
- Unbeatable performance on both moisture and dirt
- Complies with the highest fire class standard: Bfl-s1
- Suitable for the toughest commercial use
- Ideal for entrances with limited entrance floor space



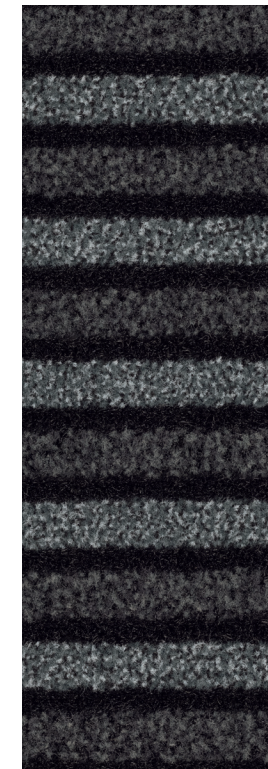
“CORAL DUO: MAXIMUM DIRT AND MOISTURE CONTROL FOR SMALL ENTRANCES.”



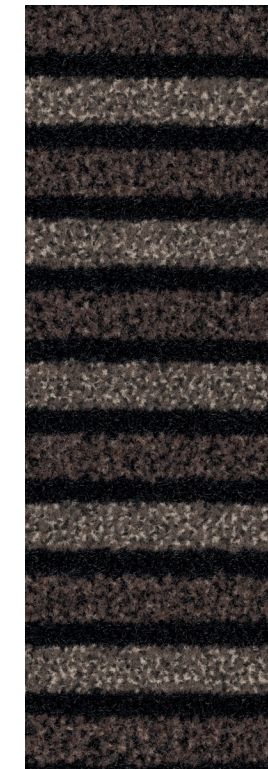
coral® duo



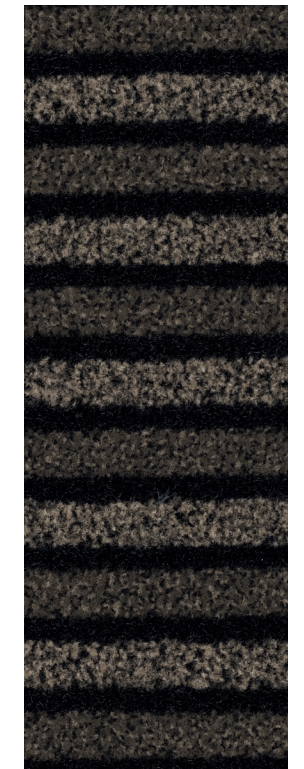
9221 | smoke cliff LRV 2%



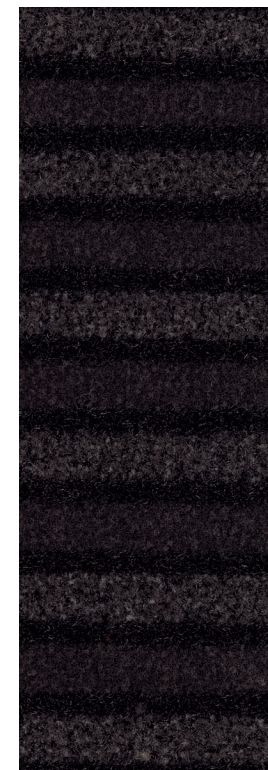
9210 | luna pearl LRV 2%



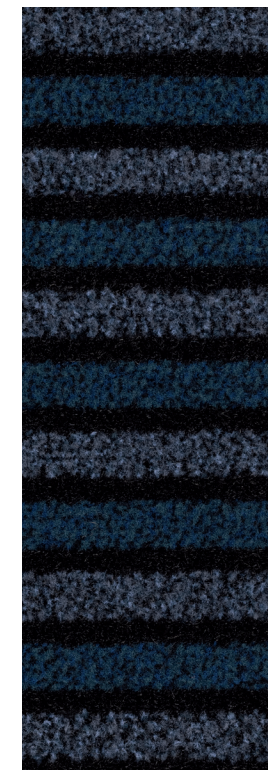
9206 | autumn ridge LRV 2%



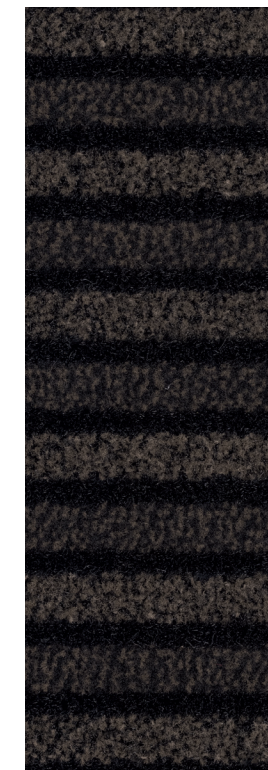
9234 | sonoran plain LRV 2%



9230 | black diamond LRV 1%



9237 | deep fjord LRV 2%



9244 | colca canyon LRV 1%



9204 | sahara dunes LRV 2%

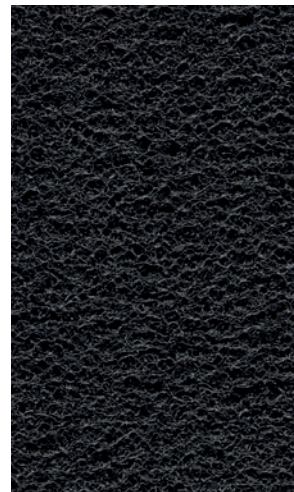
coral® grip



THE ROBUST DIRT AND GRIT REMOVER

Want to know the secret to keeping your interior clean even when it looks like a hopeless cause? Don't start your entrance floor protection inside—start outside, by scraping off the largest soil particles before your visitors even cross the threshold. Coral Grip is a versatile, nonwoven clean-off barrier mat for outdoor and indoor use that comes in medium-duty (MD) and heavy-duty (HD) formats. Coral Grip has an open, non-backed, pervious structure, though it can also be manufactured with an Everfort vinyl backing to make it impervious. And when the going is really tough, there's Coral Grip HD, whose patented embossed design and durable, pliable vinyl filaments ensure a highly effective dirt-scraping action.

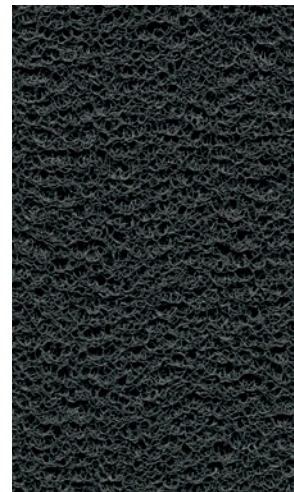
- Contains granulates for maximum non-slip performance
- Cleans off the worst dirt before it can get inside
- Helps protect an inviting interior design street-side
- Suitable for the heaviest commercial use
- Ideal for outside and inside entrance
- Coral Grip with backing: complies with the highest fire class standard, Bfl-s1



open structure  with vinyl backing 



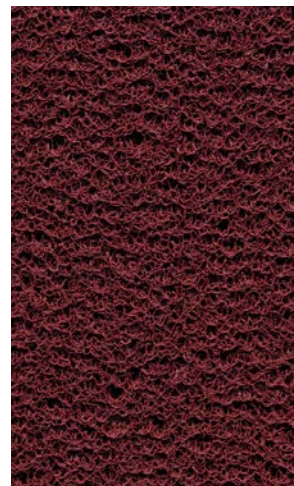
6950 | MD  6930 | MD | ink
6150 | HD  6130 | HD

LRV 2%



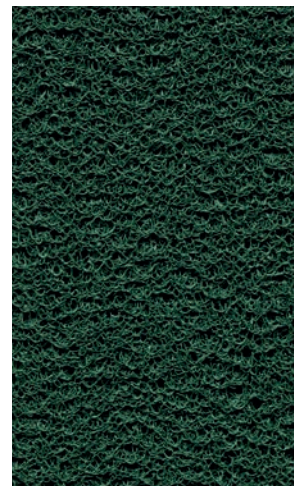
6940 | MD  6920 | MD | stone
6140 | HD  6120 | HD

LRV 7%



6143 | HD  6123 | HD | wine
6943 | MD  6923 | MD

LRV 5%



6148 | HD  6128 | HD | grass
6948 | MD  6928 | MD

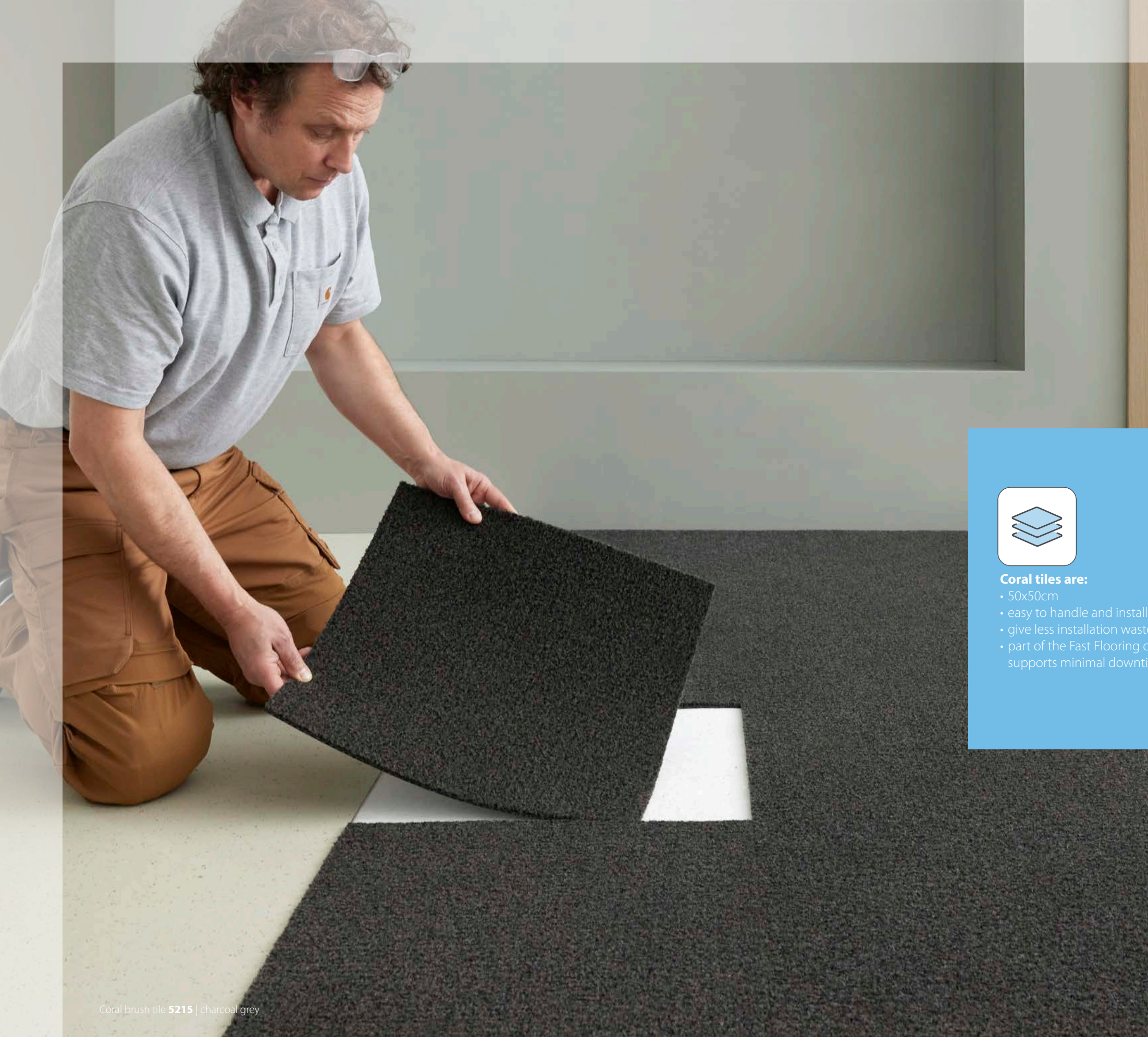
LRV 5%



“CORAL GRIP: SCRAPE OFF THE TOUGHEST DIRT BEFORE IT EVER ENTERS YOUR BUILDING.”



6128 | grass



coral[®] tiles

EASY INSTALLATION, MODULAR TILE SOLUTION

Coral Brush is also available as an entrance-flooring tile. Coral tiles provide the flexibility that comes with the 50 × 50 cm tile format. Using Coral tiles can reduce cut-off waste and also allows for quicker installation. This is particularly relevant when downtime or retail store opening times are at stake. In addition, the increased flexibility of fitting a modular format allows for easier storage and handling.



Coral tiles are:

- 50x50cm
- easy to handle and install
- give less installation waste
- part of the Fast Flooring offer which supports minimal downtime

Coral brush tile 5215 | charcoal grey

HOW CAN WE HELP YOU?

We have given you all the benefits as to why a Coral entrance flooring is the best solution for your project. We are happy to help you specify this further. Use our various tools or contact us directly.

More information about Coral

Read the full Coral story on our website. www.forboflooringNA.com/coral

Floor visualizer

Would you like to visualize the floor you have in mind in a specific room or even your own project? Please go to our floor visualizer and play around with designs and images. www.forbo-flooring.com/floorvisualizer

Sample service

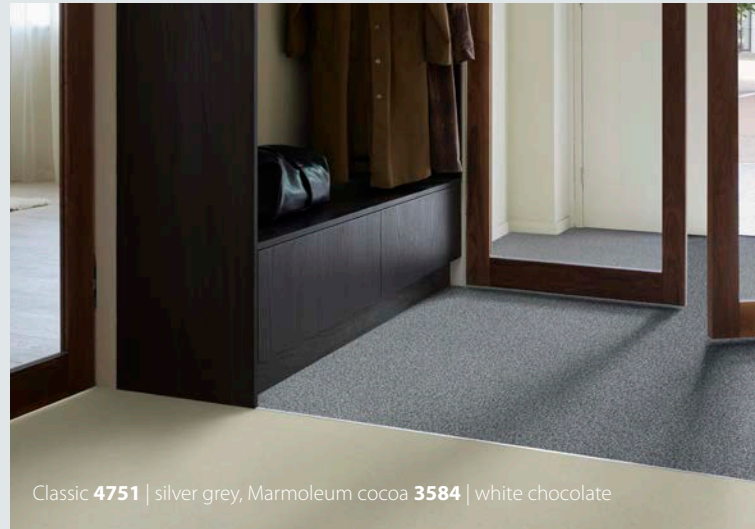
If you would like to receive a sample, please go to our website or contact our local customer service.

Installation, cleaning & maintenance

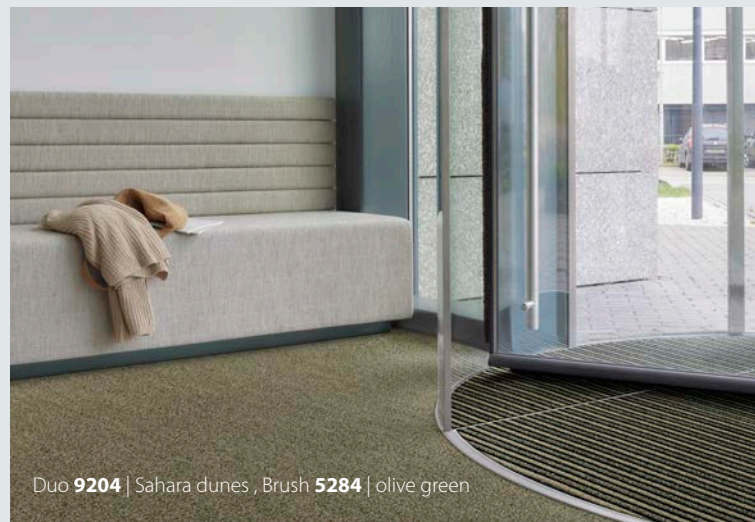
On our website you will find videos, PDF downloads, and more to help you find the best way to install Coral or to learn how to clean and maintain your floor. Our technical teams are just a phone call away should you still have questions. downloads@forboflooringNA.com

Inspiration & references

Would you like to see how others apply Coral? Then please have a look at the "Inspiration & references" part of our website. www.forboflooringNA.com/references



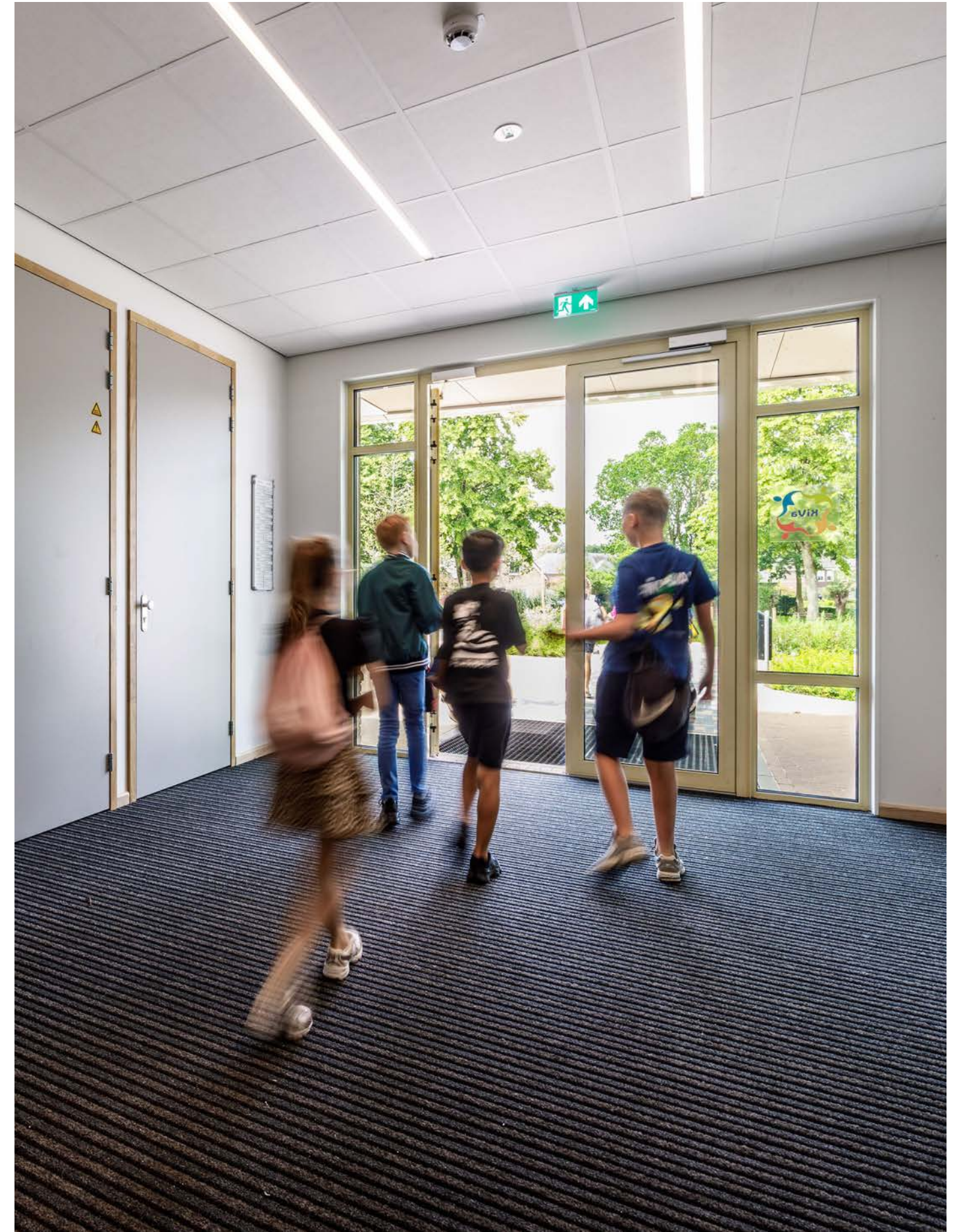
Classic 4751 | silver grey, Marmoleum cocoa 3584 | white chocolate



Duo 9204 | Sahara dunes, Brush 5284 | olive green

Contact

Should you have remaining questions, please don't hesitate to contact us via; www.forboflooringNA.com/contact or send an email to questions@forboflooringNA.com



FORBO CORAL TECHNICAL DATA

1.3 Product Descriptions				
Product	Construction			
Grip MD	Forbo Coral Grip MD entrance flooring is a versatile non-woven product suitable for both inside and outside entrances. Durable, pliable vinyl filaments provide a highly effective scraping action, with granulated PVC chips added to help create a non-slip surface. In standard form, Forbo Coral Grip MD has an open, non-backed, pervious structure, but it can also be manufactured with an EVERFORT vinyl backing. The innovative EVERFORT vinyl backing is a solid vinyl which is flexible, strong, and heavy in weight. It lays flat, making installation easier. It is impervious to water, making it suitable for intensive wet cleaning.			
Grip HD	Forbo Coral Grip HD entrance flooring is a versatile non-woven product with a patented embossed design suitable for both inside and outside entrances. Durable, pliable vinyl filaments provide a highly effective scraping action, with granulated PVC chips added to help create a non-slip surface. In standard form, Forbo Coral Grip HD has an open, non-backed, pervious structure, but it can also be manufactured with an EVERFORT vinyl backing. The innovative EVERFORT vinyl backing is a solid vinyl which is flexible, strong, and heavy in weight. It lays flat, making installation easier. It is impervious to water, making it suitable for intensive wet cleaning.			
Duo	Forbo Coral Duo entrance flooring incorporates alternating strips of scraping Coral Brush yarns and moisture absorbing Coral Classic yarns, which are reinforced with tough resilient monofilament fibers. These yarns are 100% polyamide, with 75% made from Econyl regenerated solution dyed polyamide. The Coral Brush strips are composed of capillary, active scraping, and heavy-duty textured yarns. The Coral Classic strips are composed of thin solution dyed yarns, thick monofilament yarns. The innovative EVERFORT vinyl backing is a solid vinyl which is flexible, strong, and heavy in weight. It lays flat, making installation easier. It is impervious to water, making it suitable for intensive wet cleaning.			
Brush & Brush Tiles	Forbo Coral Brush entrance flooring incorporates three types of 100% Econyl regenerated solution dyed polyamide yarns giving a blended appearance – capillary yarns for absorbing moisture, active dirt scraping yarns to quickly brush off soil, and heavy-duty textured yarns which retain its appearance. The innovative EVERFORT vinyl backing is a solid vinyl which is flexible, strong, and heavy in weight. It lays flat, making installation easier. It is impervious to water, making it suitable for intensive wet cleaning.			
1.4 Physical Characteristics (dimensions are approximate)				
Characteristics	Grip MD	Grip HD	Duo	Brush & Brush Tiles
Gauge	Backed: 0.47" (12 mm) Un-backed*: 0.46" (11.75 mm)	Backed: 0.67" (17 mm) Un-backed*: 0.66" (16.75 mm)	0.354" (9.0 mm)	0.354" (9.0 mm)
Width	Backed: 48" (1.22 meters) plus edging Un-backed: 48" (1.22 meters) no edging	Backed: 48" (1.22 meters) plus edging Un-backed: 48" (1.22 meters) no edging	79" (2 meters) plus edging	79" (2 meters) plus edging
Length	49.21' (15 meters)	32.81' (10 meters)	90.22' (27.5 meters)	90.22' (27.5 meters)
Roll Size	21.87 yards ² (18 meters ²)	14.58 yards ² (12 meters ²)	65.78 yards ² (55 meters ²)	65.78 yards ² (55 meters ²)
Mat Sizes	For information on custom sized mats, contact the local Forbo Sales Representative.			
Thickness	*As the construction of this product is un-backed, some variance of thickness may occur. The nominal thickness is 0.46" (11.75 mm).	*As the construction of this product is un-backed, some variance of thickness may occur. The nominal thickness is 0.66" (16.75 mm).	0.24" (6.0 mm)	0.28" (7.0 mm)
Backing	EVERFORT vinyl back or un-backed	EVERFORT vinyl back or un-backed	EVERFORT vinyl	EVERFORT vinyl
2.1 Application Areas (Refer to Forbo's Entrance Systems brochure for additional information.)				
	Zone 1: Outside and Inside entrances to the building.	Zone 2: Inside entrances to the building	Zone 3 Circulation areas, such as reception, lobby, or adjoining corridors areas.	
Grip MD	✓			
Grip HD	✓			
Duo		✓		
Brush & Brush Tiles		✓		✓
2.2 Environmental	Grip MD, Grip HD, Duo, Brush, and Brush tiles are compliant with CDPH 01350 requirements for VOC emissions and indoor air quality. Forbo Coral Grip MD contributes to LEED v4.1 credits. For additional information, contact Forbo Flooring Systems.			
2.3 Durability	Grip MD, Grip HD, Duo, Brush, and Brush tiles achieve a wear classification of 33 when tested in accordance with EN 1307.			
2.4 Castor Resistance				
Grip MD	—			
Grip HD	—			
Duo	Suitable for office chairs with castors when tested in accordance with ISO 4918, Castor Chair Test.			
Brush & Brush Tiles	Suitable for office chairs with castors when tested in accordance with ISO 4918, Castor Chair Continuous Use Test.			
2.5 Electrostatic Propensity				
Grip MD	—			
Grip HD	—			
Duo	0.00 kv when tested in accordance with AATCC 134, Electrostatic Propensity of Carpets.			
Brush & Brush Tiles	6.80 kv (negative) when tested in accordance with AATCC 134, Electrostatic Propensity of Carpets.			
2.6 Fire Testing				
Grip MD	Class 1 when tested in accordance with ASTM E 648 / NFPA 253, Standard Test Method for Critical Radiant Flux. Passes when tested in accordance with ASTM D 2859, Standard Test Method for Ignition Characteristics of Finished Textile Floor Covering Materials/Pill Test			
Grip HD	Class 1 when tested in accordance with ASTM E 648 / NFPA 253, Standard Test Method for Critical Radiant Flux. Passes when tested in accordance with ASTM D 2859, Standard Test Method for Ignition Characteristics of Finished Textile Floor Covering Materials/Pill Test.			
Duo	Class 1 when tested in accordance with ASTM E 648 / NFPA 253, Standard Test Method for Critical Radiant Flux. Meets 450 or less when tested in accordance with ASTM E 662 / NFPA 258, Standard Test Method for Smoke Density. Passes when tested in accordance with ASTM D 2859, Standard Test Method for Ignition Characteristics of Finished Textile Floor Covering Materials/Pill Test.			
Brush & Brush Tiles	Class 1 when tested in accordance with ASTM E 648 / NFPA 253, Standard Test Method for Critical Radiant Flux. Meets 450 or less when tested in accordance with ASTM E 662 / NFPA 258, Standard Test Method for Smoke Density. Passes when tested in accordance with ASTM D 2859, Standard Test Method for Ignition Characteristics of Finished Textile Floor Covering Materials/Pill Test.			
2.7 Color Fastness:	Grip MD, Grip HD, Duo, Brush, and Brush tiles are rated 5.0 when tested in accordance with AATCC 129-01, Colorfastness to Ozone in Atmosphere Under High Humidity, and rated 5.0 when tested in accordance with AATCC 164-01, Colorfastness to Oxides of Nitrogen in Atmosphere Under High Humidity.			
3 INSTALLATION				
	Grip MD	Grip HD	Duo	Brush & Brush Tiles
3.1 Adhesive	Use Forbo 660 adhesive when installing			
3.2 Installation Guidelines	Refer to Forbo's Installation Guidelines for complete installation recommendations.			
4. Warranty	Grip MD	Grip HD	Duo	Brush & Brush Tiles
	Limited 5-year warranty. For complete details, contact Forbo Flooring.			
5. Care & Cleaning	Grip MD	Grip HD	Duo	Brush & Brush Tiles
	Refer to Forbo's Floor Care Guidelines for complete care recommendations.			

Forbo Flooring Systems US
8 Maplewood Drive
Hazleton, PA 18202
1-800-842-7839

Forbo Flooring Systems Canada
3983 Nashua Drive, Unit 1
Mississauga, ON L4V 1P3
1-800-268-8108 (English) | 1-800-567-9268 (French)

creating better environments



FLOORING SYSTEMS