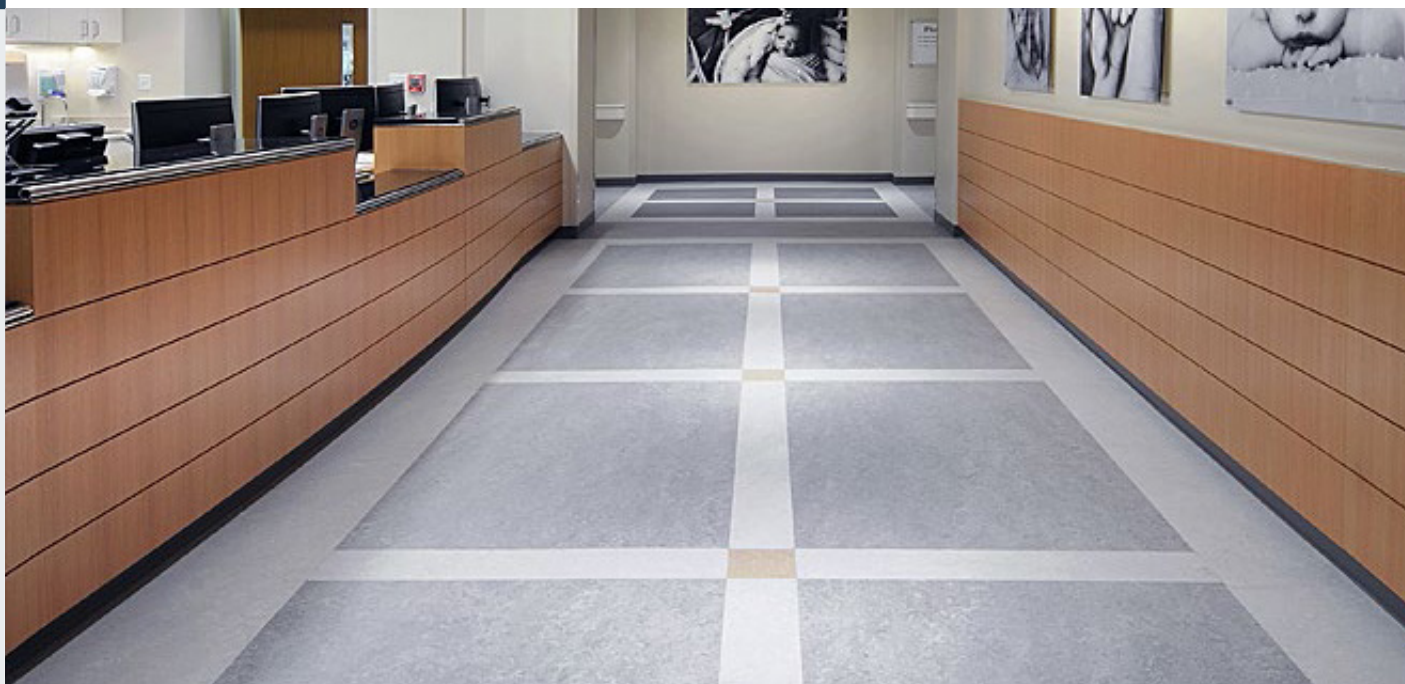


# Product Information: Marmoweld ETU Seam Weld Paste



**Forbo Marmoweld ETU** (EZ to use) is a colour matching paste weld/sealer specifically designed for finishing Marmoleum installations.

This product provides an effective solution for filling minor gaps in seams when using the net fit installation method, ensuring a seamless and long-lasting flooring finish\*.

## LEAD TIMES

Marmoweld ETU is made to order with an approximate 14 business days lead time from the placement of the order.

## BENEFITS

- Cost savings over traditional heat welding
- Ease of use (EZ)
- Elimination of potential damage caused by grooving, burning, and scalping seams during traditional heat welding
- Enhanced aesthetics compared to standard heat-welded floors

## CONTENTS

[CLICK TO CONTINUE](#)

[Technical specifications](#) **Page 2**

[Installation guide for welding seams](#) **Page 2**

[Installation guide for minor repairs](#) **Page 3**



\*As a result of the developments and advancements made over the past decades, including the introduction of Marmoleum® Topshield pro (Forbo's factory finish for Marmoleum®), heat welding is now typically unnecessary for most applications.

## Technical specifications

Safety	100% Solvent and Ammonia Free Non-Flammable
Storage	Do Not Freeze
Shelf life	2 years in unopened container
VOC Emissions	0 g/L (per SCAQMD rule 1168)
Odour	Little to no odour
Spread rate (1 coat)	1 mm gap = ≤ 300 lm
Unit size	230 ml



## INSTALLATION ADVICE

Forbo Marmoweld ETU is a colour-coordinating paste weld which can also be used to make minor repairs for Marmoleum products.

Forbo Marmoweld ETU should never be diluted or mixed with any other sealants.

Forbo Marmoweld ETU is only for use with Forbo Marmoleum products.

Material should always be visually inspected prior to installation. If there are any questions regarding the quality of material, contact your local Forbo representative prior to installation.

## TOOLS REQUIRED

- Clean white lint-free cloths, clean buckets and clean cold water

## APPLICATION

### Using Forbo Marmoweld ETU for welding 1.0mm prepared seams:

Always apply Forbo Marmoweld ETU immediately upon the completion of installed seams. Delaying the application of the product increases the chances of seam contamination.



Carefully clean all excess adhesive from within the 1mm prepared seam before applying Forbo Marmoweld ETU.

This must be done while the adhesive is still wet and can be accomplished using the edge of the Forbo Marmoweld ETU applicator card.



Remove all loose debris from the surface of the flooring material by sweeping or vacuuming. Remove any residual adhesive from the surface with a clean, white, lint-free cloth and clean, cool water prior to applying Forbo Marmoweld ETU.

Carefully apply Forbo Marmoweld ETU directly into the 1mm prepared seam with the applicator card.



Work in manageable sections of 1 metre to 1.5 metres at a time by carefully pushing Forbo Marmoweld ETU into and across the seam.

Remove excess wet Forbo Marmoweld ETU from the sides of the seam with the applicator card.

Let the welded seam dry for a minimum of 30 minutes.



Carefully wipe off any Forbo Marmoweld ETU residue from the sides of the welded seam with a clean, white, lint-free damp cloth. Repeat this process as necessary, making sure that only clean cloths and water are being used so residue from unclean water or cloths is not being spread.

## NOTE –

Change water and cloths frequently to eliminate spreading weld residue over the surface of the floor. Clean water and cloths will help reduce further cleanup after the Forbo Marmoweld ETU has dried.



After application and cleaning is complete, carefully inspect that there are no voids or low spots. Re-apply Forbo Marmoweld ETU as necessary so the final seam is free of voids or low spots.

If reapplication is required, let the welded seam dry for a minimum of 30 minutes, then carefully wipe off any Forbo Marmoweld ETU residue from the sides of the welded seam with a clean, white, lint-free damp cloth. Repeat this process as necessary, making sure that only clean cloths and water are being used so residue from unclean water or cloths is not being spread.

Ensure that **ALL** Forbo Marmoweld ETU residue is removed from the surface of the flooring material.

Once Forbo Marmoweld ETU seams are completed, allow a minimum of an additional 30 minutes before damp mopping.

Do not flood the floor or conduct wet maintenance for a minimum of 24 hours. Refer to Forbo Flooring's Installation Guide for complete installation guidelines of Marmoleum.

Dried Forbo Marmoweld ETU residue on the surface of the material can easily be removed with clean, cool water and a clean, white, lint-free cloth within 8 hours.

**To remove residue after 8 hours:** use a properly diluted neutral pH cleaner like [Forbo 818 Monel](#) with a 10-minute dwell time, then use a swing machine with a 3M™ #5100 Red Cleaning pad, pick up that solution, and follow with a clean water rinse.

## APPLICATION

### Using Forbo Marmoweld ETU for Minor Repairs:



Sparingly apply Forbo Marmoweld ETU to areas requiring minor repairs such as gaps at seams or perimeters with the Forbo Marmoweld ETU applicator card.



Remove any excess Forbo Marmoweld ETU from the surface of the floor using the Forbo Marmoweld ETU applicator card.

Let the repaired area dry for a minimum of 30 minutes.

Carefully wipe off any Forbo Marmoweld ETU residue from the sides of the repair with a clean, white, lint-free damp cloth.



Repeat this process as necessary, making sure that only clean cloths and water are being used so residue from unclean water or cloths is not being spread.

### NOTE –

Change water and cloths frequently to eliminate spreading weld residue over the surface of the floor. Clean water and cloths will help reduce further cleanup after the Forbo Marmoweld ETU has dried.

After application and cleaning, carefully inspect that there are no voids or low spots.

Re-apply as necessary so the final repair is free of voids or low spots.

If reapplication is required, let the repaired area dry for a minimum of 30 minutes, then carefully wipe off any Forbo Marmoweld ETU residue from the sides of the welded seam with a clean, white, lint-free damp cloth.

Repeat this process as necessary, making sure that only clean cloths and water are being used so residue from unclean water or cloths is not being spread.

Ensure that **ALL** Forbo Marmoweld ETU residue is removed from the surface of the flooring material.

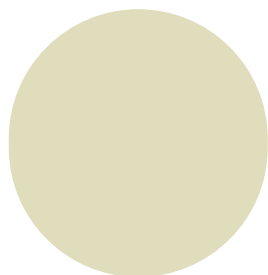
Once Forbo Marmoweld ETU repairs are completed allow a minimum of an additional 30 minutes before damp mopping. Do **NOT** flood the floor or conduct wet maintenance for a minimum of 24 hours. Refer to Forbo Flooring's [Marmoleum Installation Guide](#) for complete installation guidelines of Marmoleum®.

### NOTE –

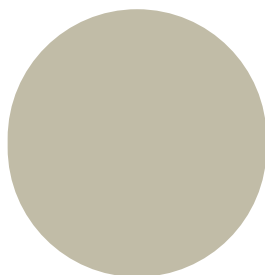
Forbo Marmoweld ETU is intended for minor repairs. It is not intended to fill large gaps or to fix poor installations. The size of the repair will affect the yield of the Forbo Marmoweld ETU. Some repairs may require additional applications to ensure there are no low spots or voids. No weld is intended to correct issues of deficient installation.

For more information, please contact your local Forbo representative or call **1800 224 471** or email [info.au@forbo.com](mailto:info.au@forbo.com).

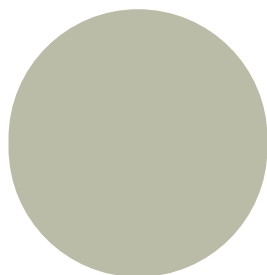
# marmoweld ETU colour chart



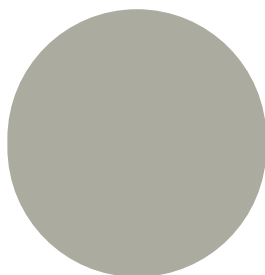
PW3722



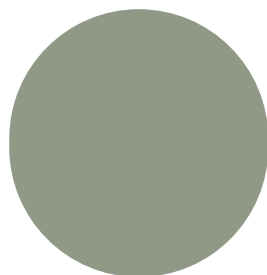
PW3431



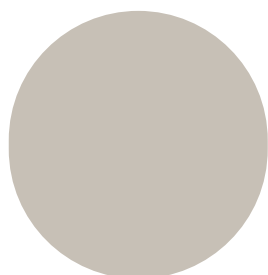
PW3430



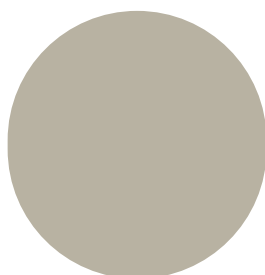
PW3032



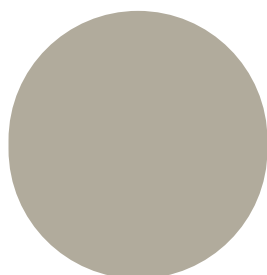
PW3891



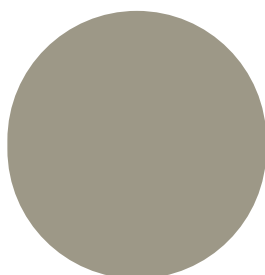
PW5232



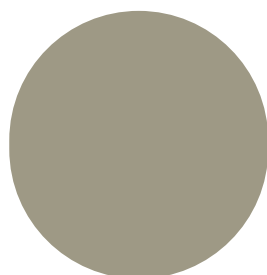
PW3717



PW3428



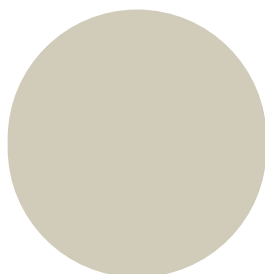
PW3736



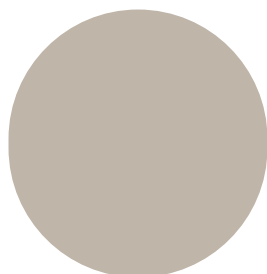
PW5801



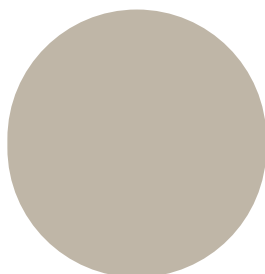
PW3650



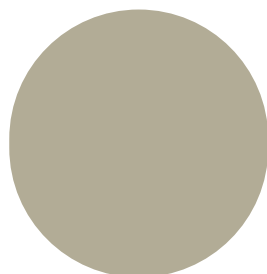
PW3257



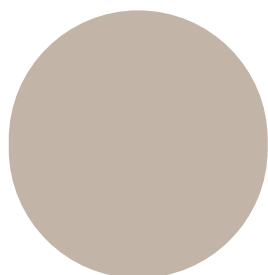
PW3888



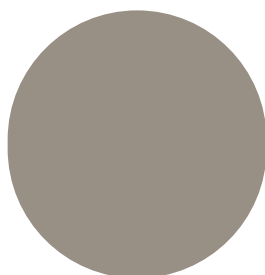
PW3136



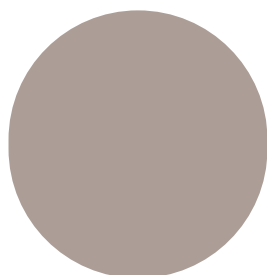
PW3733



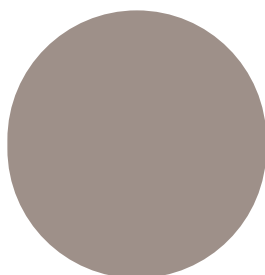
PW3432



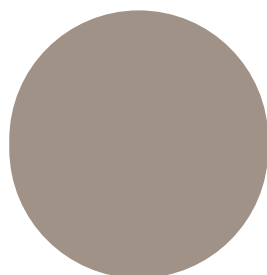
PW3573  
PW3702  
PW5250



PW3216



PW3718



PW3706

Please note that the colour chips are digital representations only and serve as reference guides. Product selection should be based on the the selected Marmoleum product colour.

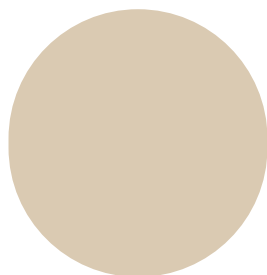
# marmoweld ETU colour chart



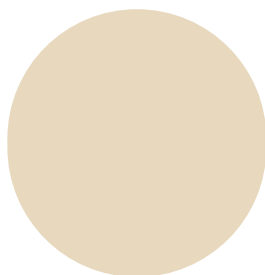
PW3584  
PW3355



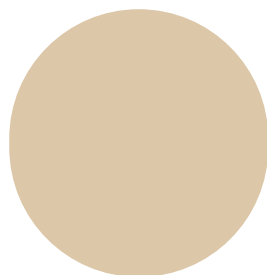
PW3575  
PW3050  
PW5257



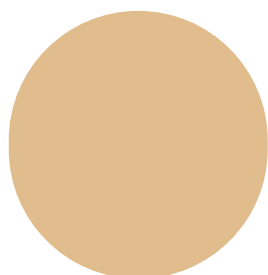
PW5252



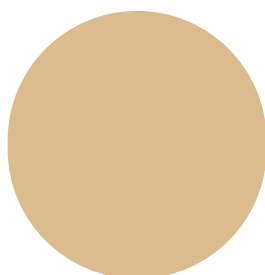
PW607



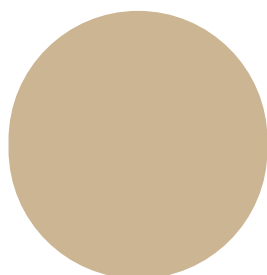
PW3701



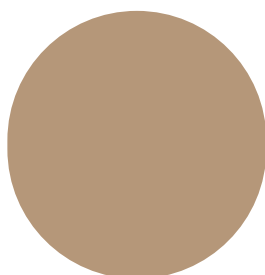
PW2707



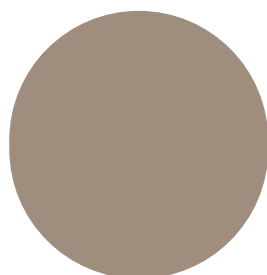
PW2499



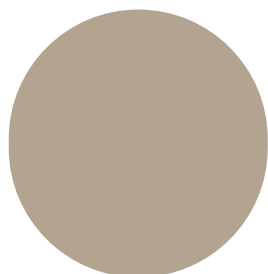
PW5255  
PW3726



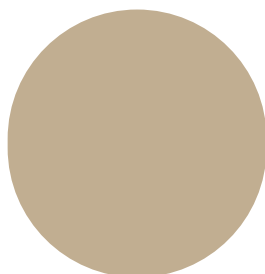
PW3727



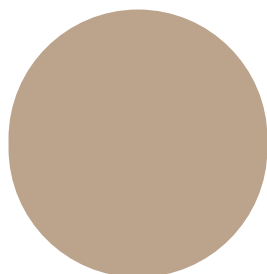
PW3580



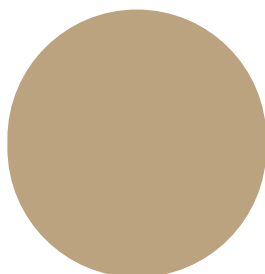
PW3708



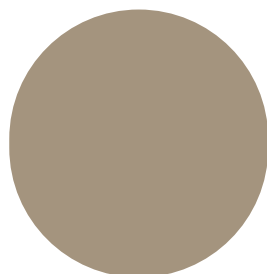
PW3728



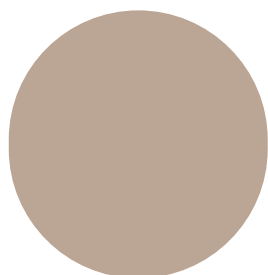
PW3890



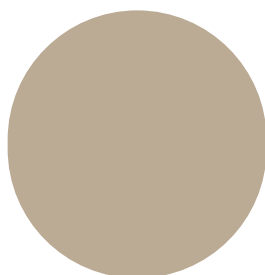
PW3427



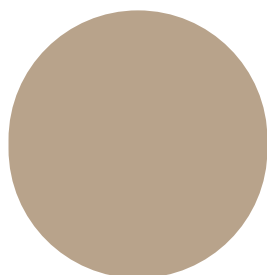
PW3279



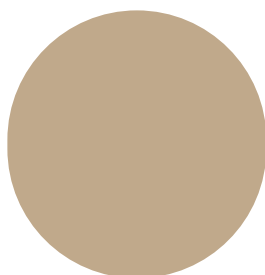
PW3232



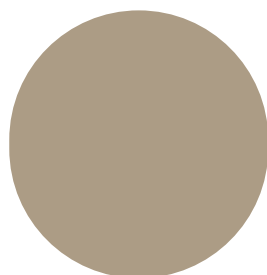
PW3715



PW3234  
PW3630



PW5216  
PW5253



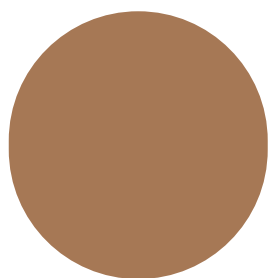
PW3252  
PW5803

Please note that the colour chips are digital representations only and serve as reference guides.  
Product selection should be based on the the selected Marmoleum product colour.

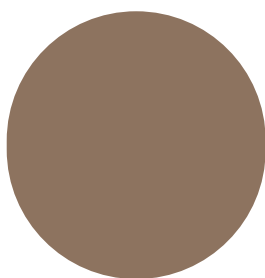


FLOORING SYSTEMS

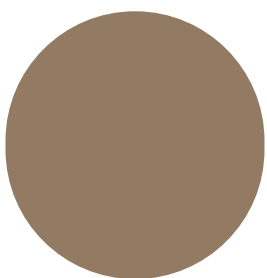
# marmoweld ETU colour chart



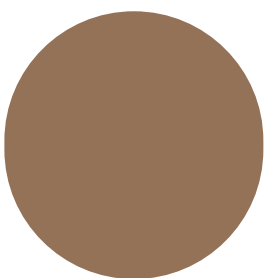
PW3233



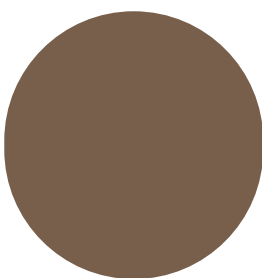
PW5804



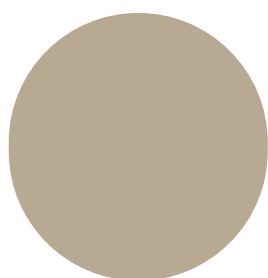
PW5217



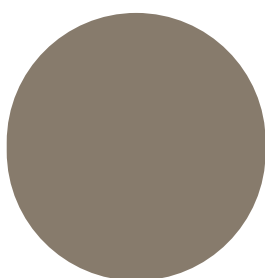
PW3370



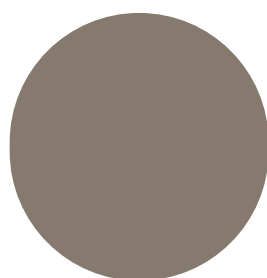
PW5254



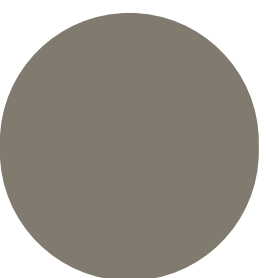
PW3729  
PW3433  
PW5248



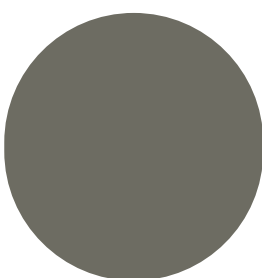
PW5231



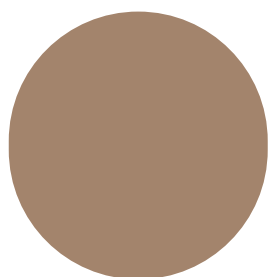
PW5225



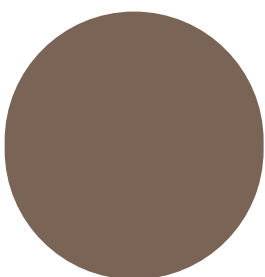
PW3704



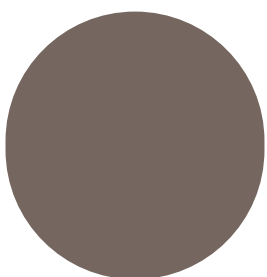
PW173/PW3373



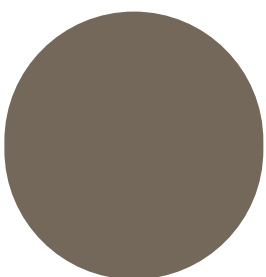
PW3881



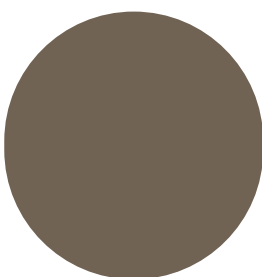
PW3235  
PW3874



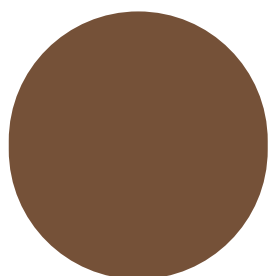
PW3737



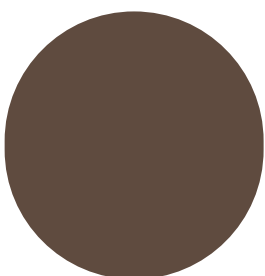
PW3705



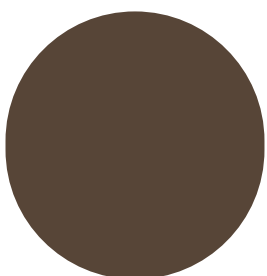
PW3657



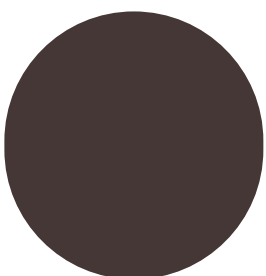
PW5229



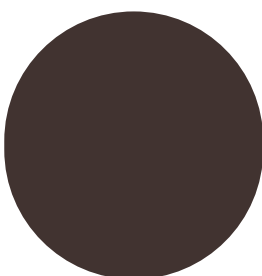
PW3746



PW5218



PW3353  
PW3581



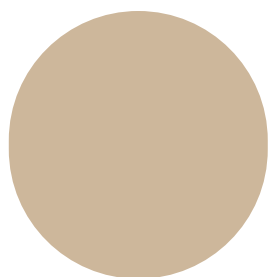
PW3632

Please note that the colour chips are digital representations only and serve as reference guides.  
Product selection should be based on the the selected Marmoleum product colour.

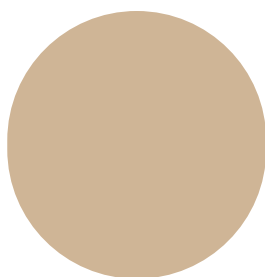


FLOORING SYSTEMS

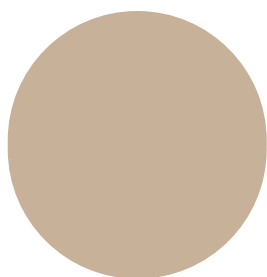
# marmoweld ETU colour chart



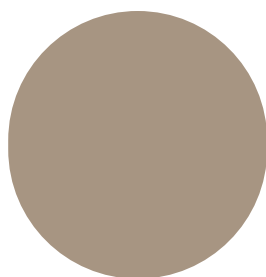
PW3711



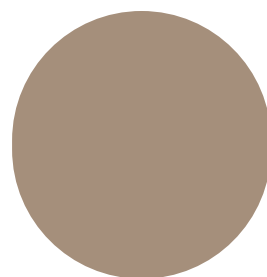
PW5230



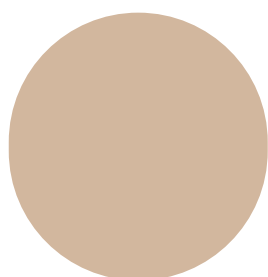
PW3120



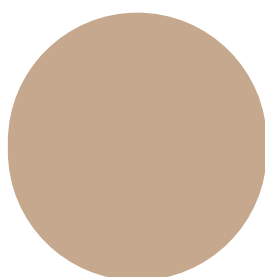
PW3712



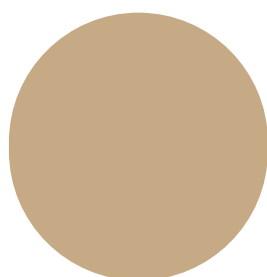
PW3405



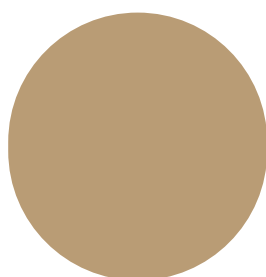
PW3861



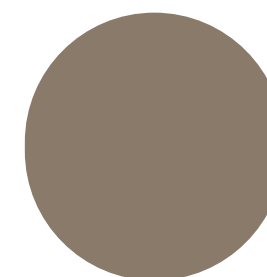
PW3141



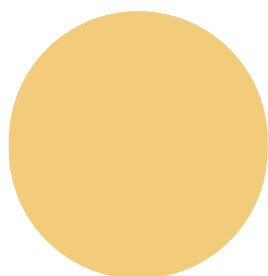
PW5256  
PW2713



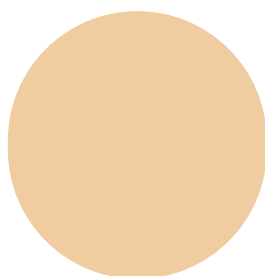
PW3407



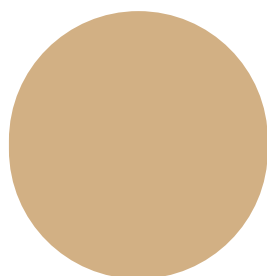
PW3246  
PW3254  
PW3709  
PW3631



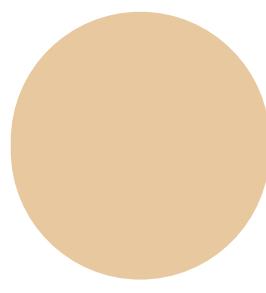
PW3653



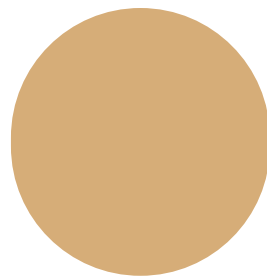
PW3858



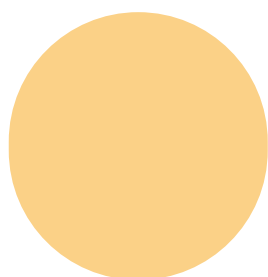
PW3075



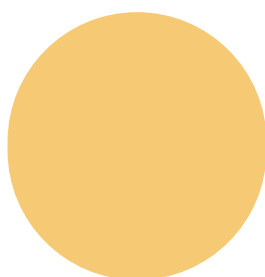
PW3038



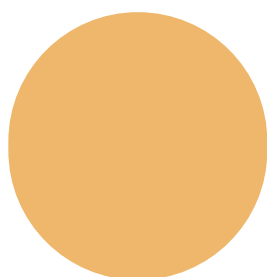
PW3173



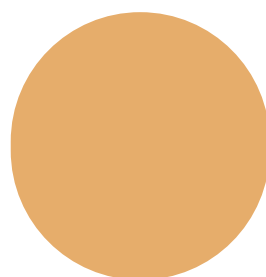
PW3846



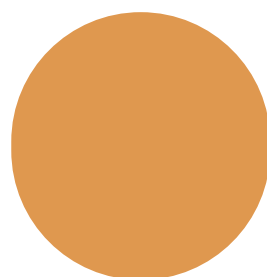
PW795



PW5235



PW3411



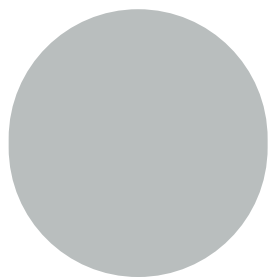
PW3847

Please note that the colour chips are digital representations only and serve as reference guides. Product selection should be based on the the selected Marmoleum product colour.

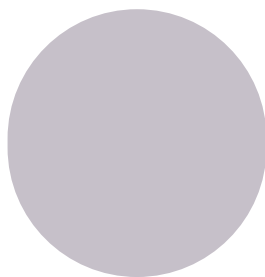


FLOORING SYSTEMS

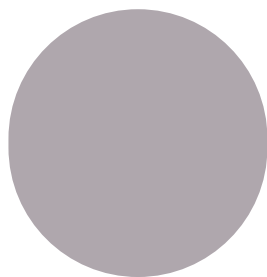
# marmoweld ETU colour chart



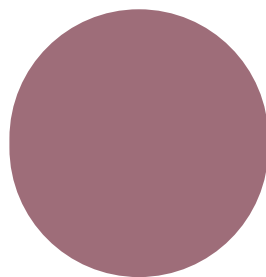
PW3732



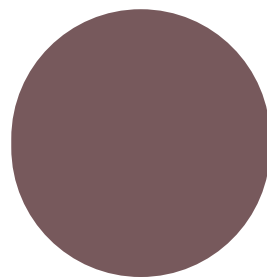
PW3363



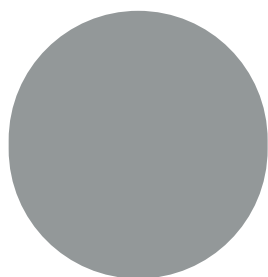
PW3266



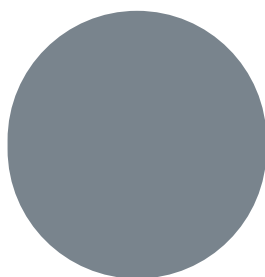
PW3740



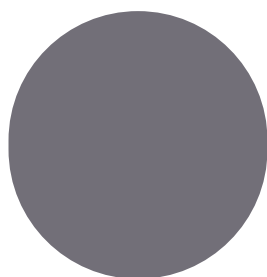
PW3272



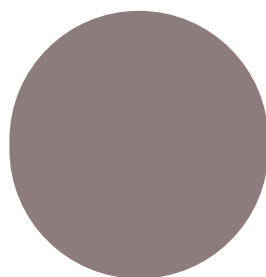
PW3053  
PW3582



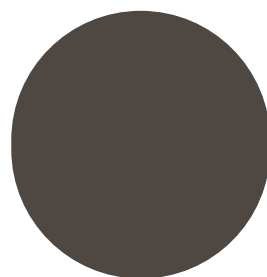
PW3734



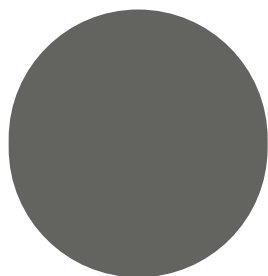
PW3730  
PW3735



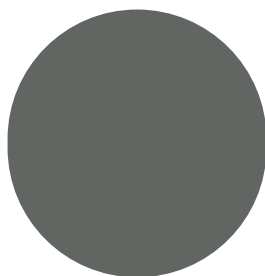
PW3123



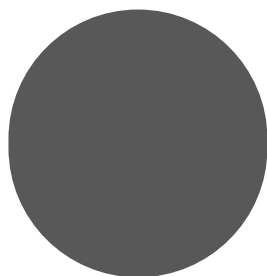
PW3725



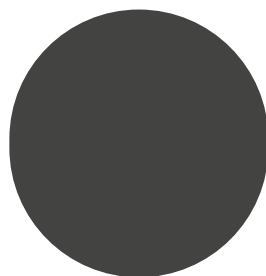
PW3703  
PW3745



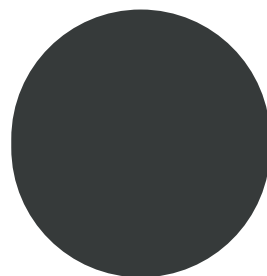
PW3137  
PW5237



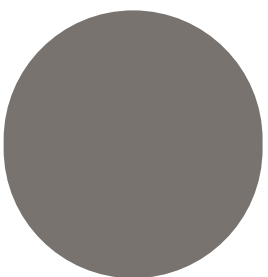
PW3048 | PW3368  
PW3421 | PW3607  
PW3872



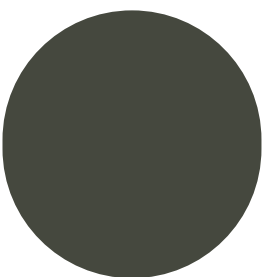
PW3139



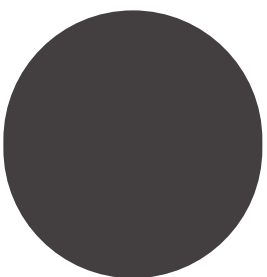
PW3707



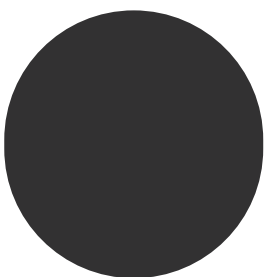
PW5251



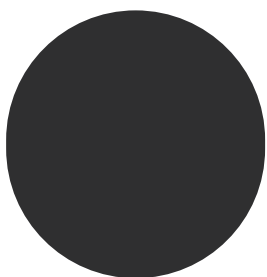
PW3583  
PW3359



PW3236



PW3613  
PW2939



PW123/PW3323

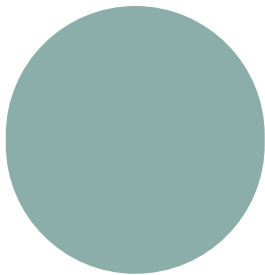
Please note that the colour chips are digital representations only and serve as reference guides. Product selection should be based on the the selected Marmoleum product colour.



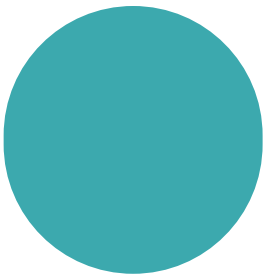
FLOORING SYSTEMS



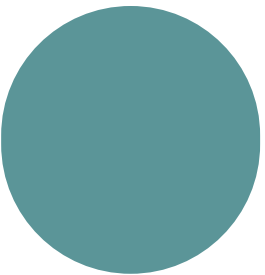
# marmoweld ETU colour chart



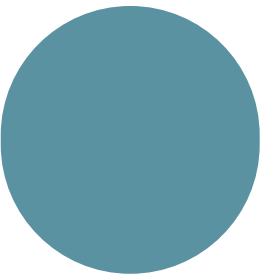
PW3267



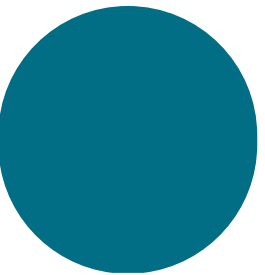
PW3269



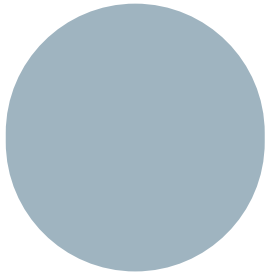
PW3238



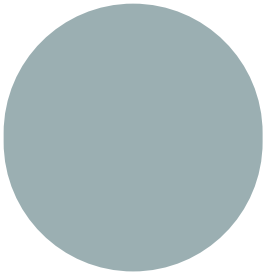
PW3644



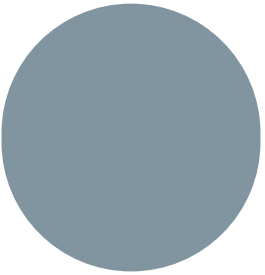
PW3264  
PW3645



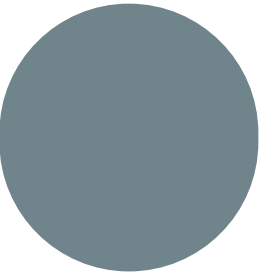
PW3828



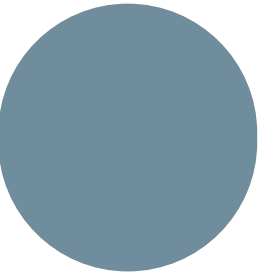
PW3429



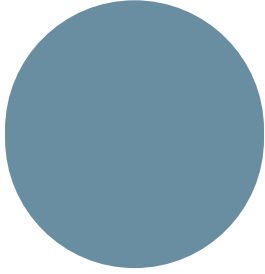
PW3219  
PW3360



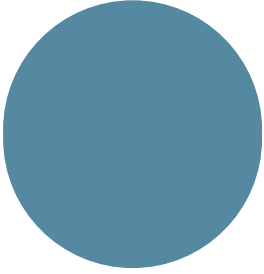
PW3731



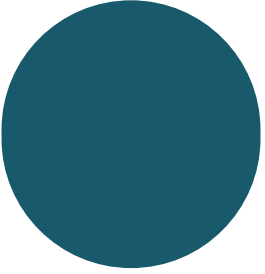
PW3642



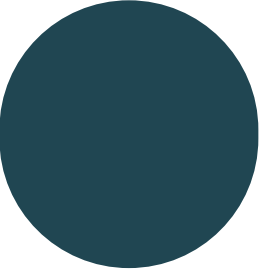
PW3275



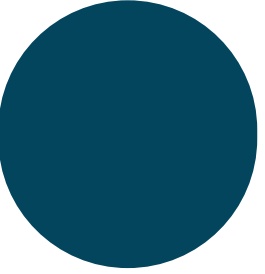
PW3055



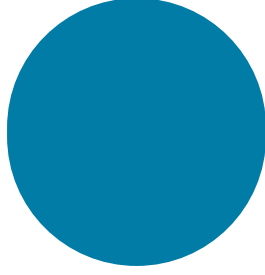
PW3652



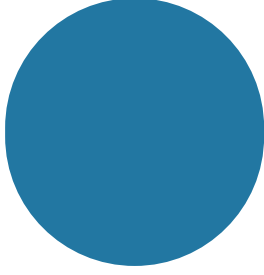
PW3358



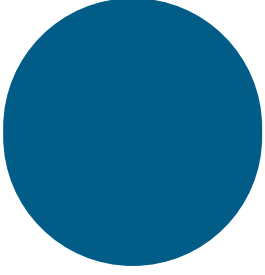
PW3261



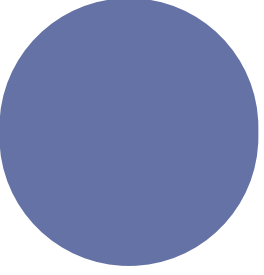
PW3656



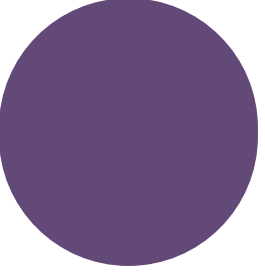
PW3210  
PW3739



PW3030



PW3270



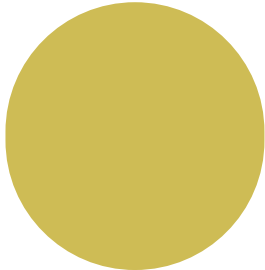
PW3277

Please note that the colour chips are digital representations only and serve as reference guides. Product selection should be based on the the selected Marmoleum product colour.

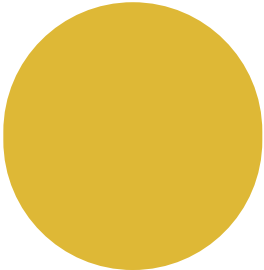


FLOORING SYSTEMS

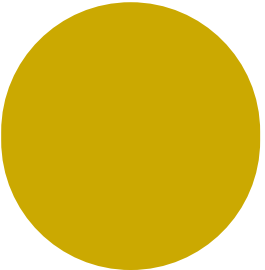
# marmoweld ETU colour chart



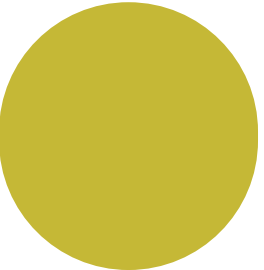
PW3646



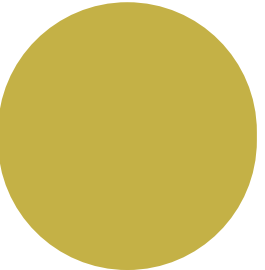
PW3741



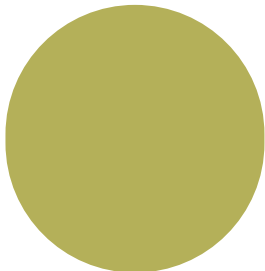
PW3634



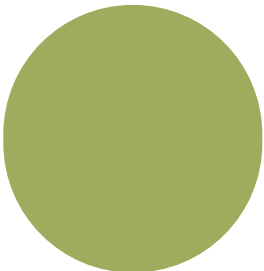
PW3224



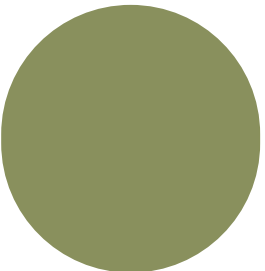
PW3885



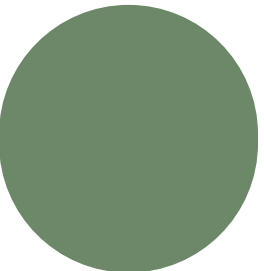
PW3413  
PW3265  
PW3655  
PW3742



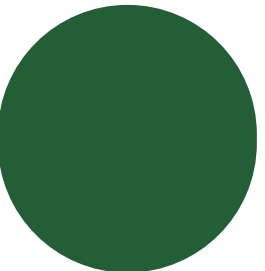
PW3258



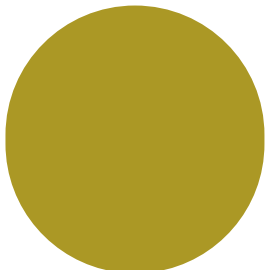
PW3260  
PW3212



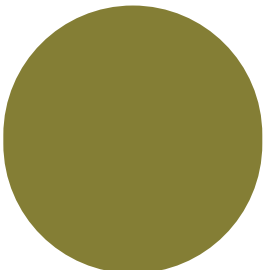
PW3222



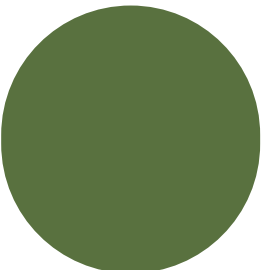
PW3271



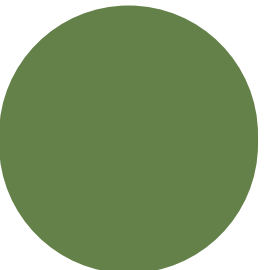
PW3362  
PW3878



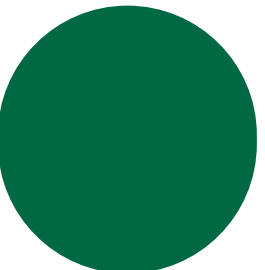
PW3247



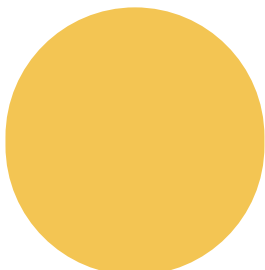
PW3282



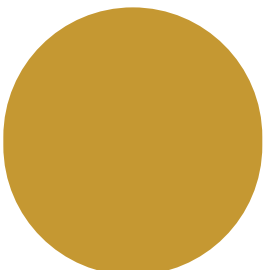
PW3647



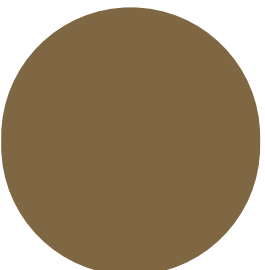
PW3649



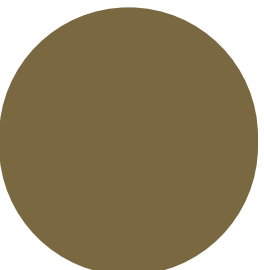
PW3251



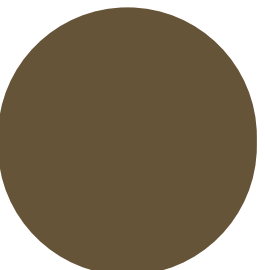
PW3259



PW3426



PW3748



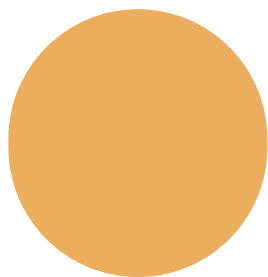
PW3568

Please note that the colour chips are digital representations only and serve as reference guides. Product selection should be based on the the selected Marmoleum product colour.

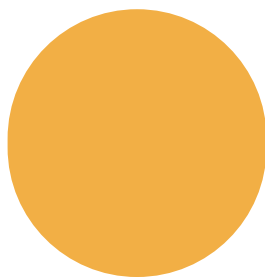


FLOORING SYSTEMS

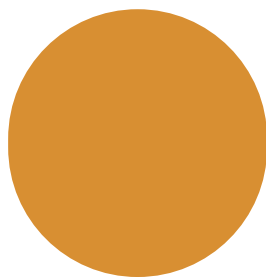
# marmoweld ETU colour chart



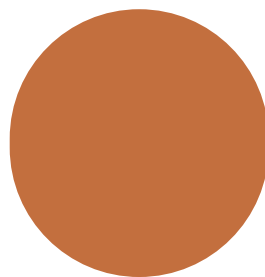
PW3208



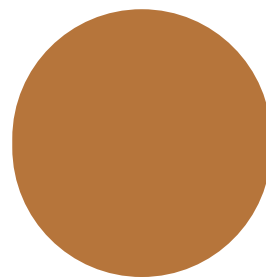
PW3225



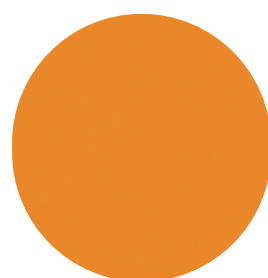
PW3354



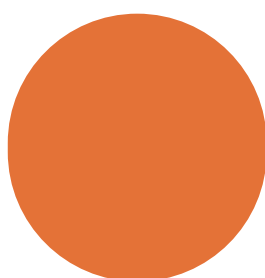
PW3403



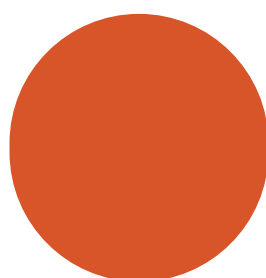
PW3174



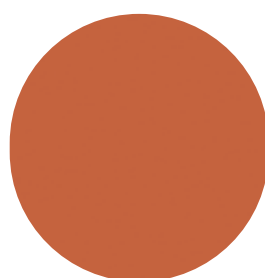
PW3262



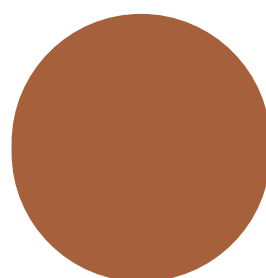
PW3738  
PW3278



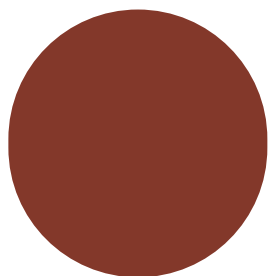
PW3651



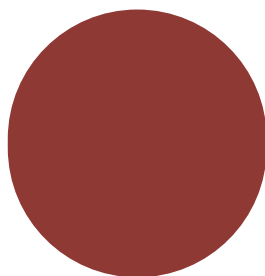
PW3126  
PW3243



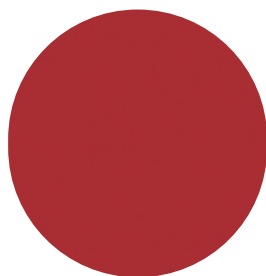
PW2767



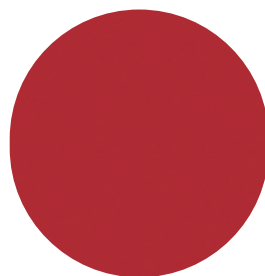
PW3203  
PW3352



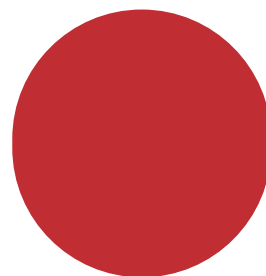
PW3273



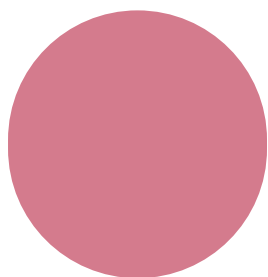
PW3131



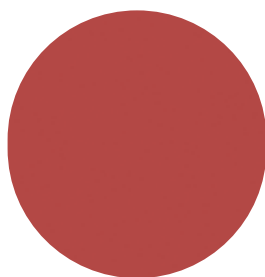
PW3127



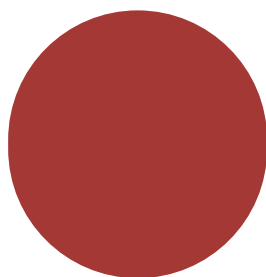
PW3743  
PW3654



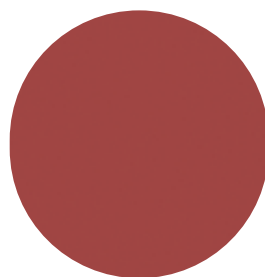
PW3268



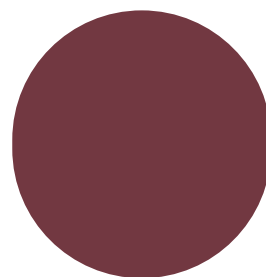
PW3263  
PW3215



PW5242



PW3625



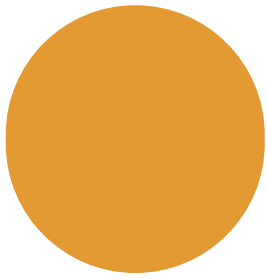
PW3276

Please note that the colour chips are digital representations only and serve as reference guides. Product selection should be based on the the selected Marmoleum product colour.

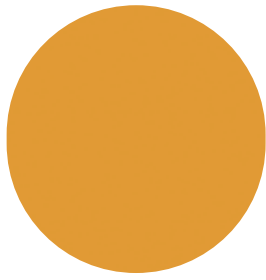


FLOORING SYSTEMS

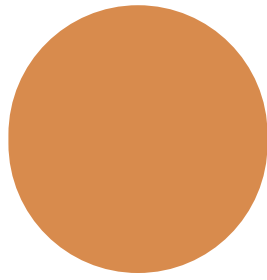
# marmoweld ETU colour chart



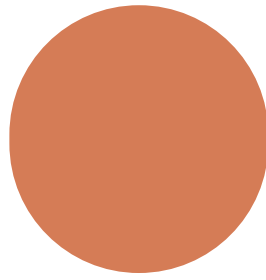
PW3125



PW3622



PW3176



PW3825

For more information, please contact your local Forbo representative or call **1800 224 471** or email [info.au@forbo.com](mailto:info.au@forbo.com).

Please note that the colour chips are digital representations only and serve as reference guides.  
Product selection should be based on the the selected Marmoleum product colour.



FLOORING SYSTEMS