



EVERYTHING YOU NEED TO KNOW ABOUT MARMOLEUM

-
- 5 organic structures
 - functional solutions
 - appearance retention
 - cleaning & maintenance
 - installation accessories
-



Marmoleum Fresco
3860 | silver shadow

Fresco

Fresco has a strong palette of subtly blended tone-on-tone items each creating a fresh, delicate and balanced aesthetic. The soft contrast of its refined marbled structure gives a gentle feel which sets the stage for calm and soothing interiors. The softness of Fresco enables it to sit well next to all other Marbled and Striato items.



Marmoleum Real
3032 | mist grey

Real

Real is our classic blend, consisting of many carefully selected individual colour tones that combine to create beautifully graded colours, from warm neutrals and calm greys to exciting brights and trend led shades. Developed to create choice, Real can be mixed together or combined with other Marmoleum designs to provide more imaginative compositions.



Marmoleum Terra
5802 | alpine mist

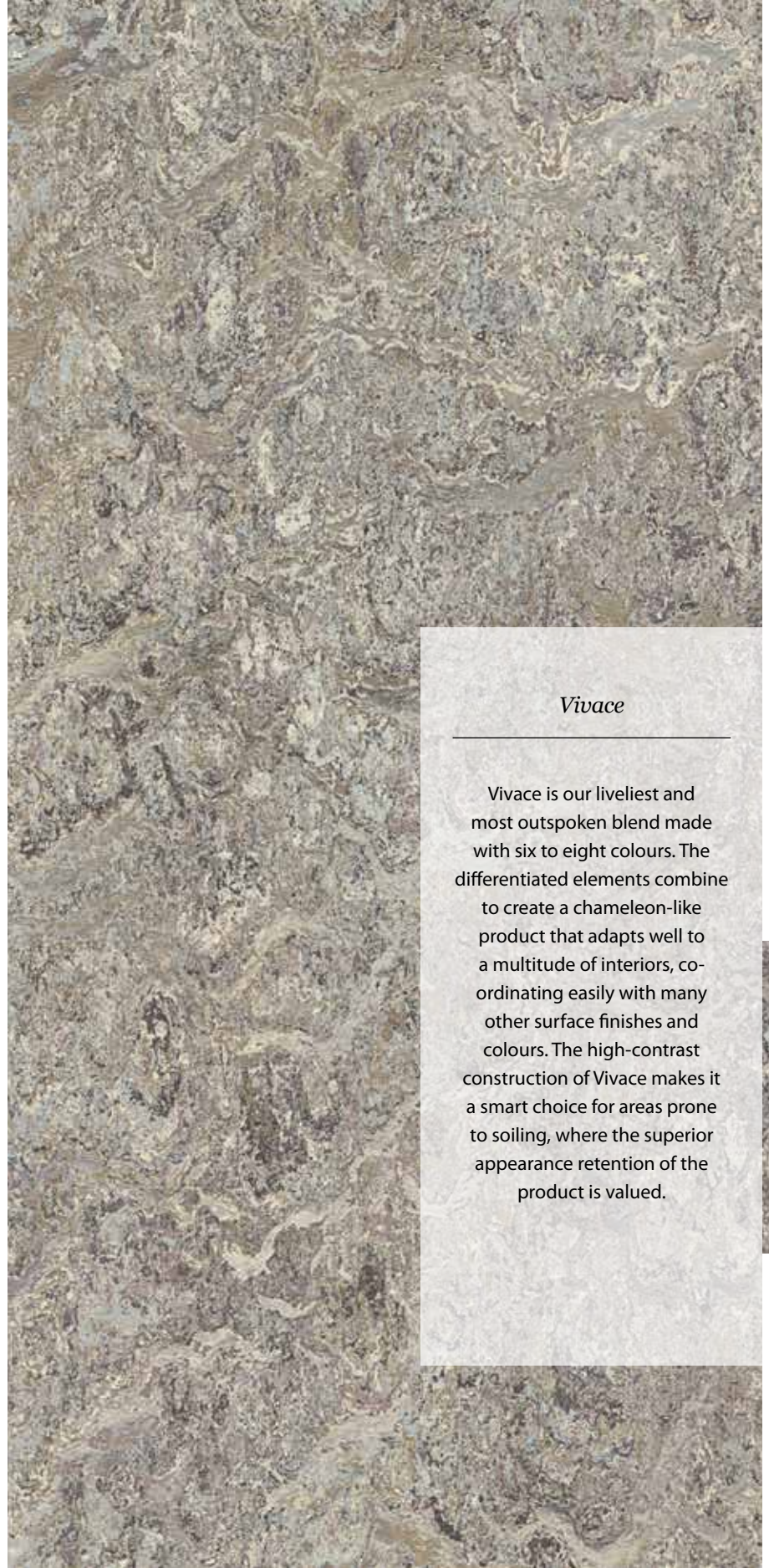
Terra

Our most recently developed blend is Terra. A close, tight and highly contrasting structure inspired by igneous rocks, Terra combines a sophisticated small-scale marbled structure with great soil hiding properties. Terra offers an authentic mix of colour, creating a versatile effect that combines well with other items in the Marmoleum collection.

Terra's superior appearance retention makes it ideal for use in high traffic areas and provides a natural feel to any environment.



Marmoleum Vivace
3420 | surprising storm



Vivace

Vivace is our liveliest and most outspoken blend made with six to eight colours. The differentiated elements combine to create a chameleon-like product that adapts well to a multitude of interiors, coordinating easily with many other surface finishes and colours. The high-contrast construction of Vivace makes it a smart choice for areas prone to soiling, where the superior appearance retention of the product is valued.



Marmoleum Splash
3428 | seashell

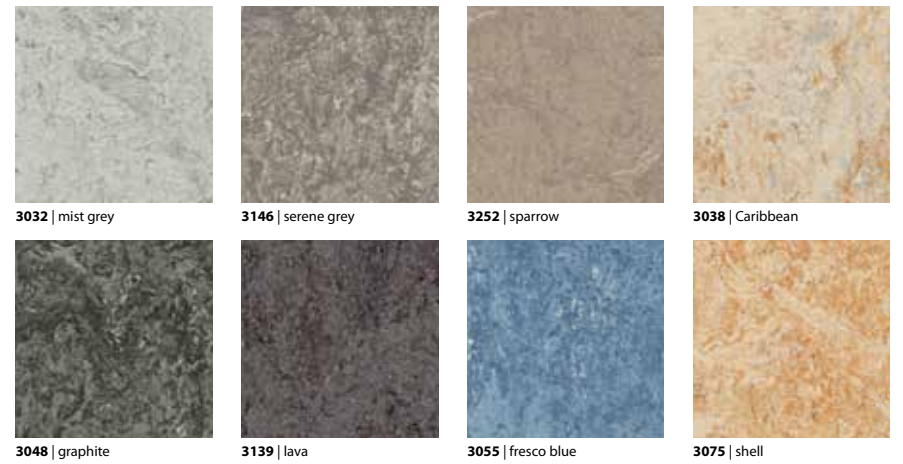
Splash

Marmoleum Splash is a new design in Forbo's Marmoleum portfolio. From a distance, Splash appears light grey with a slight nuance in tone, yet from up close, Splash is an overall light grey with hints of surprising colours peeking through. This modern and playful design is ideal for use on its own but can also act as a connector between the more classic marbled and uni-patterned visuals in the collection.

The Marmoleum Authentic selection is a range of 22 timeless items for which Forbo guarantees stock availability until the end of 2028. The range incorporates Real and Fresco designs in several steps of neutral greys and beiges, complemented with a number of brighter and more colourful items, which can be used for accent colours or zoning.



A range of eight neutral, long lasting Marmoleum colours in 3.2 mm thickness is available for those situations where 3.2 mm is still being specified for its durability (for example for stairs).



ACOUSTIC SOLUTIONS

marmoleum® decibel



The best way to reduce sound is at source. That's why acoustic floors are key when it comes to reducing noise in buildings. Our acoustic linoleum floors create a healthy environment by combining sustainability with excellent sound reduction properties. Marmoleum Acoustic reaches an impact

sound reduction of up to 14dB thanks to its cork backing, and Marmoleum Decibel, with polyolefin backing, achieves 18dB impact sound reduction. A 2.0 mm Corkment underlay can be used with regular 2.5 mm Marmoleum to reduce impact sound by 14dB.

Within our linoleum flooring range, Marmoleum Decibel provides the highest impact sound reduction of 18dB. This sustainable acoustic flooring consists of 2.5 mm Marmoleum laminated onto a 1 mm layer of polyolefin foam. Available from stock in 14 colours selected from the Marmoleum Marbled collection (and more from other collections). The Marmoleum Decibel construction is also possible on request for other linoleum colours. Minimum order quantities and lead times apply. Please contact your local sales manager for more information.

marmoleum® acoustic



Marmoleum Acoustic reduces impact sound by 14dB (EN-ISO 717-2). It is an integrated floor covering with 2 mm Marmoleum and a 2 mm Corkment backing. Using Marmoleum Acoustic reduces installation costs as it can be installed in one operation, avoiding the need to first lay Corkment and then Marmoleum. Marmoleum Acoustic is available in six colours.



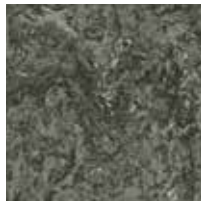
33032 | mist grey



33252 | sparrow



33038 | Caribbean



33048 | graphite



33139 | lava



33055 | fresco blue



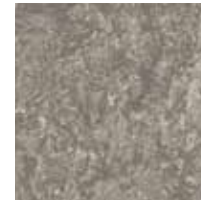
303835 | Caribbean



322535 | dandelion



386035 | silver shadow



314635 | serene grey



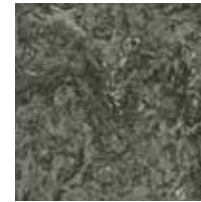
312035 | rosato



322435 | chartreuse



262135 | dove grey



304835 | graphite



325235 | sparrow



303035 | blue



305335 | dove blue



387235 | volcanic ash



324635 | shrike



312735 | Bleeckerstreet



325235 | sparrow 322435 | chartreuse



For those areas where extended fire retardancy protection is required, Forbo has developed 2.5 mm Marmoleum FR. This new variant has an improved reaction to fire classification: Bfl-s1, G, CS according to EN 13501-1. All other technical details remain the same as the standard specifications for Marmoleum 2.5 mm. Marmoleum FR is also classified as a D-s2, d0 wallcovering in accordance with EN 15102. Marmoleum FR is available on request and minimum order quantities and lead times apply. Please contact your local sales manager for more information.



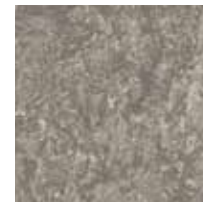
3430 | salsa verde 3891 | sage



Marmoleum Ohmex is a static dissipative floor covering that meets higher requirements for electrical conductivity and is therefore ideal for computer rooms, server rooms and other areas with sensitive equipment. With an electrical resistance of $1 \cdot 10^6 < R1 < 1 \cdot 10^8$ Ohm, conforming to EN 1081, Ohmex ensures personal safety and protects equipment that is sensitive to static discharge. Marmoleum Ohmex is 2.5 mm thick and available in six colours.



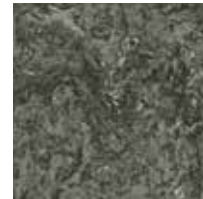
73032 | mist grey



73146 | serene grey



73038 | Caribbean



73048 | graphite



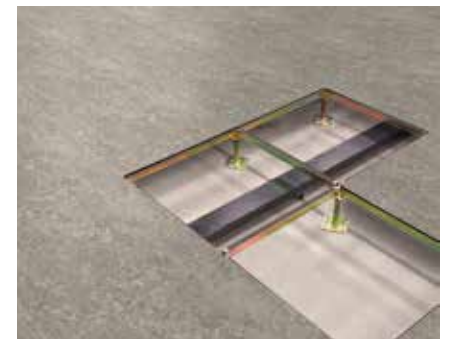
72939 | black



73055 | fresco blue

Raised access flooring

Pre-cut panels, sized 61x61 cm, of all Marmoleum colours can be made for raised access floor manufacturers. These are available on request and minimum order quantities and lead times apply. Please contact your local sales manager for more information.



APPEARANCE RETENTION & CLEANING AND MAINTENANCE

Durability

Marmoleum is known for its versatility and durability. With the correct cleaning and maintenance, it can last up to 30 years or even longer. Marmoleum floors have a proven track record, with millions of m² installed every year.

Topshield2

Topshield2 is Forbo Flooring's high performance UV-finish which is applied to all Marmoleum floor coverings. Topshield2 resists staining, scuffing and scratching for lasting appearance retention and makes for easy cleaning and maintenance at lower intervals.



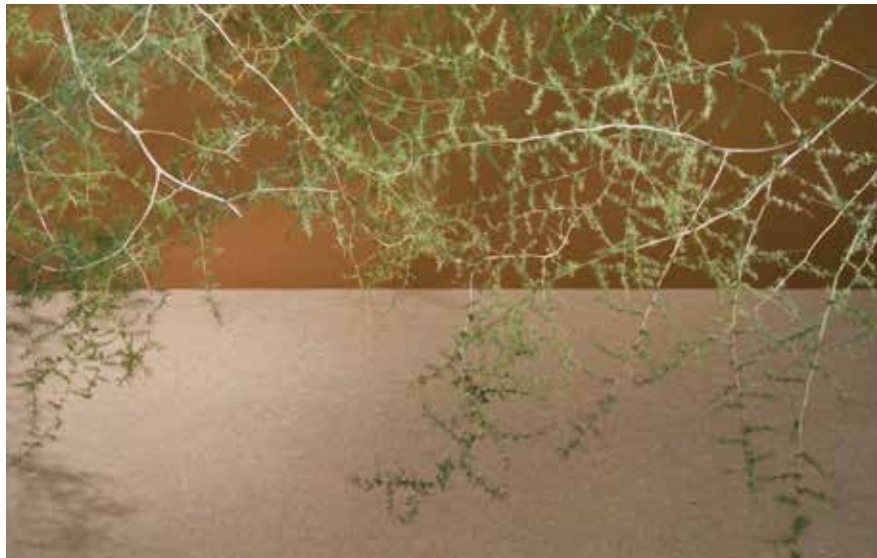
Antibacterial activity

One very specific and unique characteristic of linoleum is its natural antibacterial properties that are inherent through the use of linseed oil and rosin as raw materials. Third party laboratory research* shows that Marmoleum restrains and reduces the activity of, in particular, Ecoli and MRSA bacteria, enhancing the hygienic performance of the floor.

* Industrial Microbiological Services Ltd. UK / 2018

Cleaning and maintenance

The choice of cleaning method and frequency will be influenced by the application and usage, chosen colour and desired appearance. If the optimum performance of any new floor covering is to be achieved, it is important that the correct cleaning and maintenance procedures are used from day one. Cleaning and maintenance guides for all Forbo Flooring Marmoleum products are available to download at: www.forboflooring.co.uk/marmoleum



CORAL ENTRANCE FLOORING

Coral

The amount of maintenance needed for a floor is influenced by the amount of dirt carried into the building. A simple measure that you can take to protect your interior floor coverings, in addition to regular maintenance, is to install Forbo

Coral entrance flooring. A Coral entrance flooring system can stop up to 95% of all dirt and moisture being carried into the building.

See our website for more information: www.forbo-flooring.co.uk/coral



Coral Welcome 3208 | matrix Marmoleum Linear 3575 | white cliffs

GREAT LOOKING SEAMS

No matter whether Marmoleum is installed net fit or welded, it delivers great looking seams.

Net fit installations

Marmoleum does not shrink over time when properly installed. This means that, in the majority of cases, welding is not required. Skilled installers can make perfect joints without welding. When Marmoleum is installed correctly, the floor will be water-resistant – one that can be cleaned with water, even when not welded. If there is no specific requirement to weld, you can save time and installation cost by opting for a net fit seam installation.

You can find more information on our website: www.forbo-flooring.co.uk/netfit

New Marmoweld

In those cases where a seam welding is still required due to local regulations or simply tradition, there are matching welding rods available for every Marmoleum design. The best matching welding rod has been selected in either uni or multi coloured structure. The patented, new Marmoweld provides a best in class welding rod solution for cleanability.

FINISHING TOUCH

Not just aesthetically pleasing but practical too.

Marmostrip skirting

Skirtings provide functional, as well as attractive, junctions between floor and wall. For all Marmoleum colours, a matching wall skirting provides a finishing touch to any installation. All Marmoform and Marmostrip solutions can be supplied with or without a hygienic or decorative aesthetic top edge capping.

Marmoform coving

The Forbo range of pre formed Marmoform coving and inner-and outer-corners are an ideal alternative. The strong pre-formed coving is easy to install and, when welded to the linoleum floor, creates a smooth transition that eliminates dirt traps.



Net fit



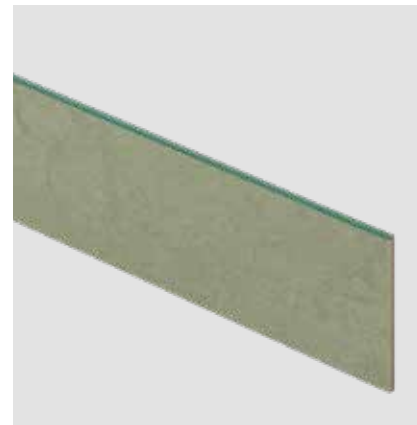
Marmoweld



Marmostrip skirting



Cove former strip



Marmostrip skirting with hygienic capping



Marmoform coving and corners



Jute backing of Marmoleum

Corkment – natural acoustic underlay

14dB Marmoleum Acoustic

18dB Marmoleum Decibel

*Pre-cut panels for raised access flooring
(61x61 cm)*
