

flotex® colour FR

Flotex Colour is a collection of three designs (Metro, Penang and Calgary) which together form a rhapsody of colour across a broad spectrum.



246010 | Metro chocolate



290020 | Calgary toffee



482014 | Penang copper



246015 | Metro cocoa



482025 | Penang forest



482002 | Penang concrete



482108 | Penang bamboo



290009 | Calgary moss



246008 | Metro anthracite



246024 | Metro carbon



246001 | Metro indigo



482026 | Penang neptune



482116 | Penang azure



246033 | Metro emerald



482020 | Penang shale



246006 | Metro grey



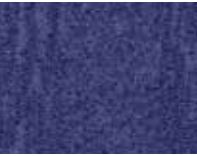
290015 | Calgary azure



246020 | Metro lagoon



482031 | Penang ash



482024 | Penang purple



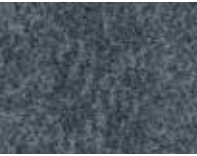
246023 | Metro horizon



482011 | Penang sapphire



290002 | Calgary grey



482004 | Penang mercury



290022 | Calgary condor



290001 | Calgary sky



482007 | Penang zinc



290025 | Calgary riviera



290021 | Calgary aqua



482044 | Penang gull



290004 | Calgary menthol



flotex® colour FR metro



The swatches shown are only a small selection of the colourways available. Please refer to the Forbo Flooring website in order to see the full colour palette.



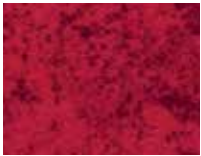
246017 | Metro berry



290005 | Calgary melon



246013 | Metro amber



290031 | Calgary cherry



290024 | Calgary fire



290008 | Calgary saffron



246035 | Metro pink



482016 | Penang coral



482022 | Penang amber



246031 | Metro cherry



246025 | Metro tangerine



290006 | Calgary sahara



482073 | Penang brick



290028 | Calgary ginger



482006 | Penang sage



482018 | Penang pepper



246012 | Metro sand

flotex® colour FR penang



flotex® colour FR calgary



Flotex Colour designs have no pattern repeats.

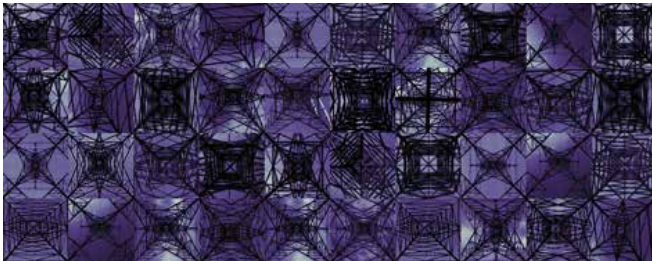
flotex® vision FR

Flotex Vision FR offers an infinite number of design options ranging from abstracts with an intricate colour spectrum to realistic images of natural materials.



Lines

Line or stripe designs, each with their own characteristics, ranging from muted and sophisticated colourways to very complex and multi-colour patterns.



Pattern

Textured, non-directional visuals created through the intricate interplay of networks and patterns.



Naturals

This collection offers photorealistic images of natural materials such as wood, stone, ceramics and cork floors. The design technology creates amazingly realistic aesthetics, with the added benefits of improved acoustics, slip resistance and reduced maintenance costs.

With over 500 items to choose from, Flotex Vision is best viewed on Forbo's online digital library which is continuously updated. The designs in Flotex Vision FR fall into six broad categories, each of which represents a different design direction: Floral, Lines, Shape, Pattern, Image and Naturals.



Shape

A collection of organic shapes and motifs delivering beautiful all-over patterns, including both contemporary and traditional designs.



Floral

A selection of floral designs, ranging from abstract, graphic flower motifs to romantic images of roses and butterflies.



Image

A design category containing a wide variety of photographic images. Grass, sand, water drops, buttons and street maps are just some of the possibilities to be found within this intriguing range.

flotex[®] vision FR

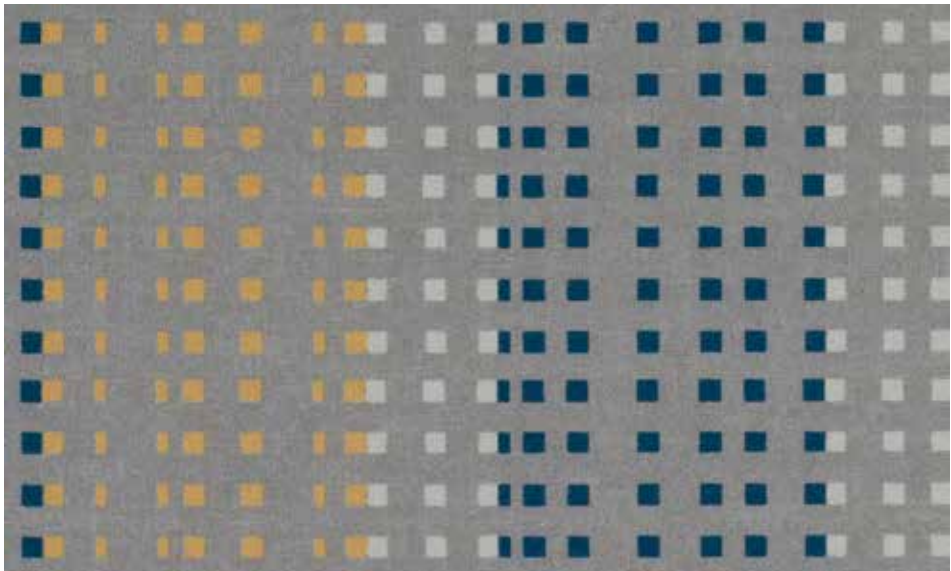
There are over 500 designs & colourways available in the Flotex range.
The samples shown are only a selection. To view the full range please visit www.flotexvision.com



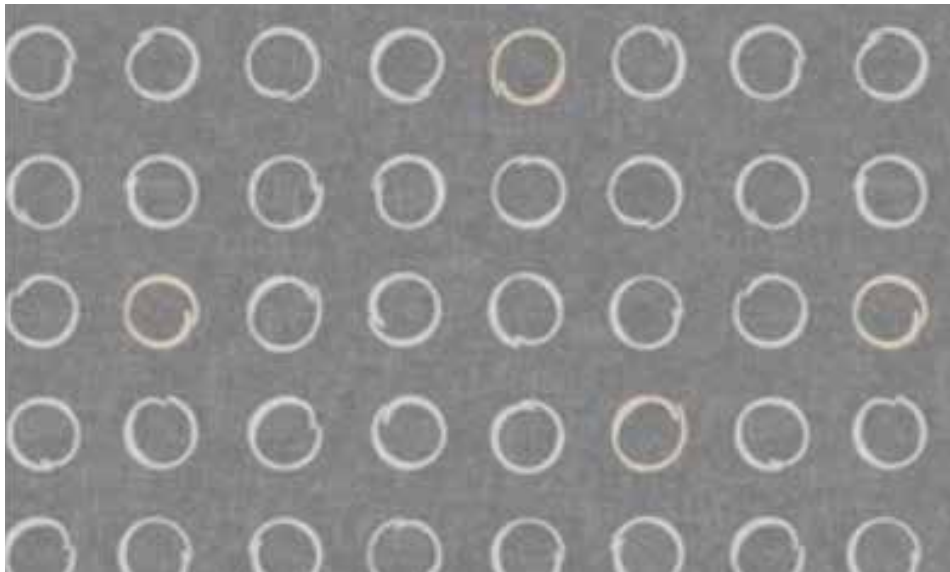
720007 | Tangent neptune



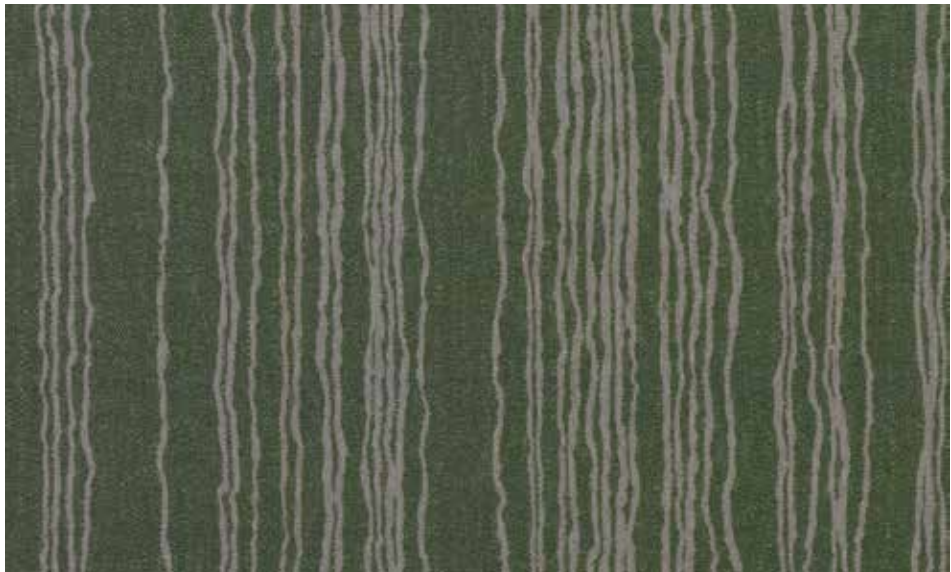
930003 | Curve pacific



580012 | Trace pepper



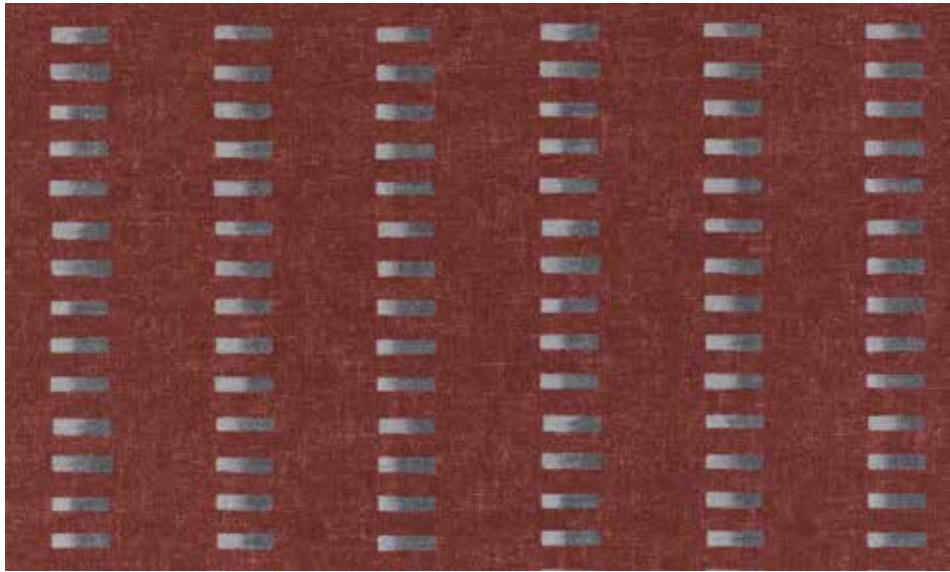
530032 | Spin zinc



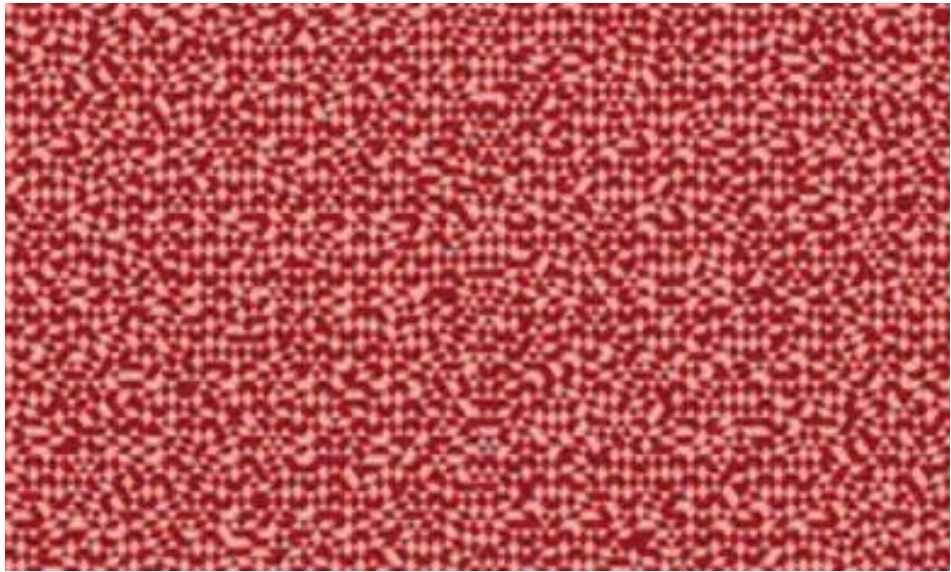
520012 | Cord forest



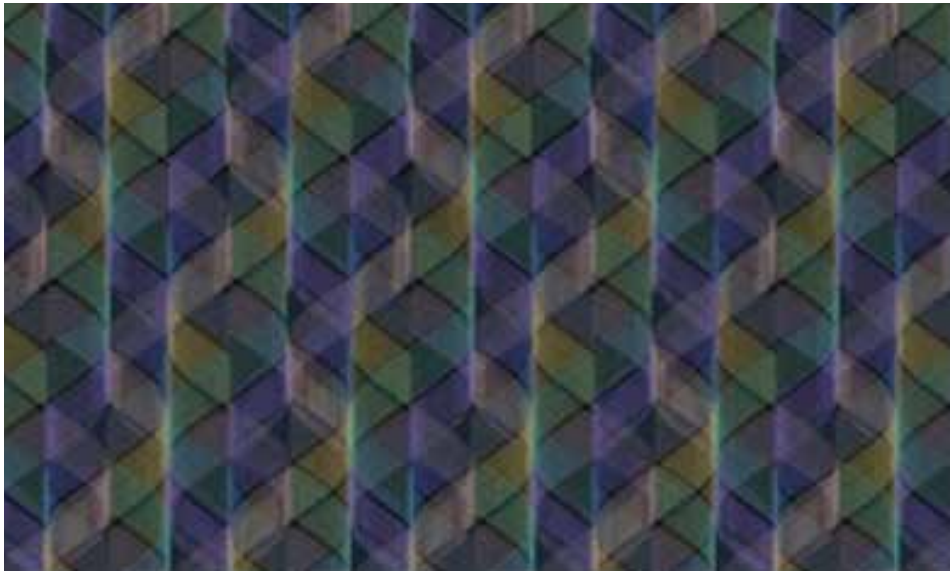
690006 | Transit oasis



510015 | Pulse spice



890007 | Facet orange



730004 | Helix tropicana