

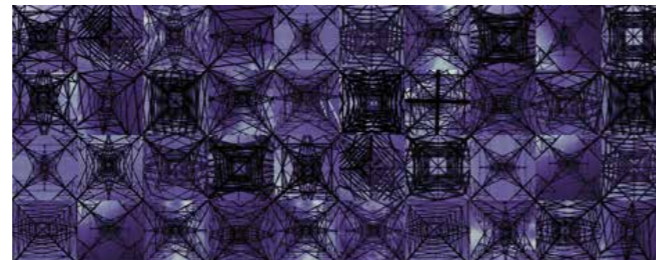
# flotex® vision FR

Flotex Vision FR offers an infinite number of design options ranging from abstracts with an intricate colour spectrum to realistic images of natural materials.



## Lines

Line or stripe designs, each with their own characteristics, ranging from muted and sophisticated colourways to very complex and multi-colour patterns.



## Pattern

Textured, non-directional visuals created through the intricate interplay of networks and patterns.



## Naturals

This collection offers photorealistic images of natural materials such as wood, stone, ceramics and cork floors. The design technology creates amazingly realistic aesthetics, with the added benefits of improved acoustics, slip resistance and reduced maintenance costs.

With over 500 items to choose from, Flotex Vision is best viewed on Forbo's online digital library which is continuously updated. The designs in Flotex Vision FR fall into six broad categories, each of which represents a different design direction: Floral, Lines, Shape, Pattern, Image and Naturals.



## Shape

A collection of organic shapes and motifs delivering beautiful all-over patterns, including both contemporary and traditional designs.



## Floral

A selection of floral designs, ranging from abstract, graphic flower motifs to romantic images of roses and butterflies.



## Image

A design category containing a wide variety of photographic images. Grass, sand, water drops, buttons and street maps are just some of the possibilities to be found within this intriguing range.

# flotex<sup>®</sup> vision FR

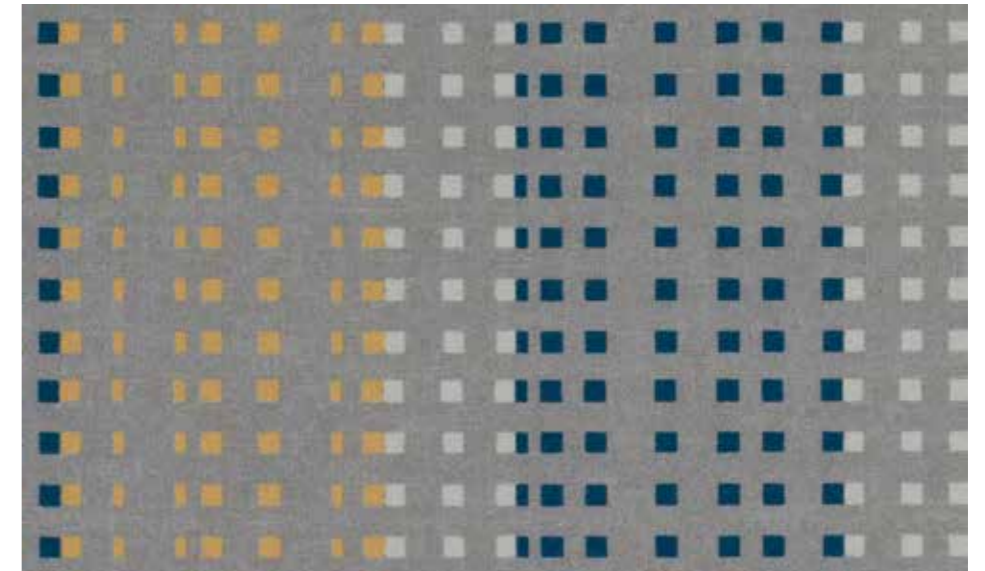
There are over 500 designs & colourways available in the Flotex range.  
The samples shown are only a selection. To view the full range please visit [www.flotexvision.com](http://www.flotexvision.com)



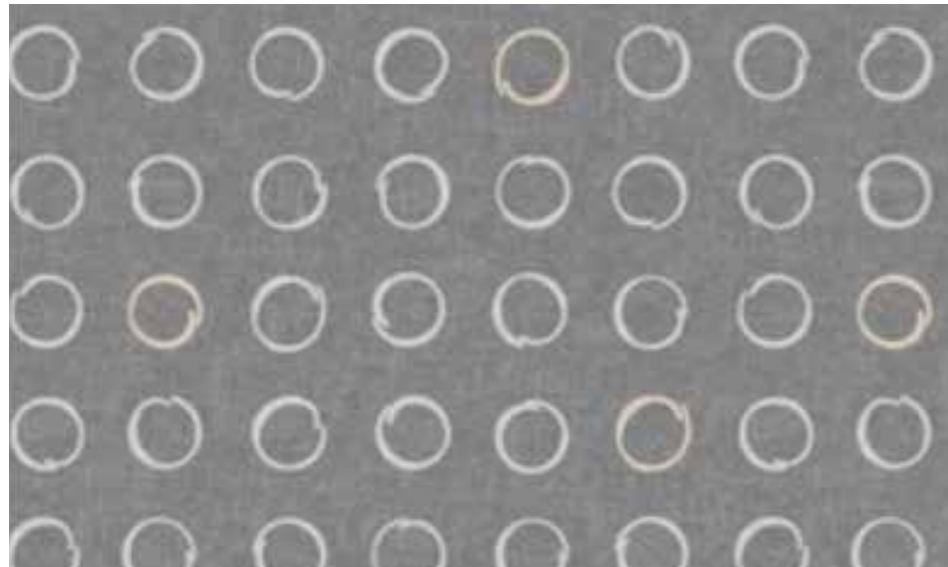
720007 | Tangent neptune



930003 | Curve pacific



580012 | Trace pepper



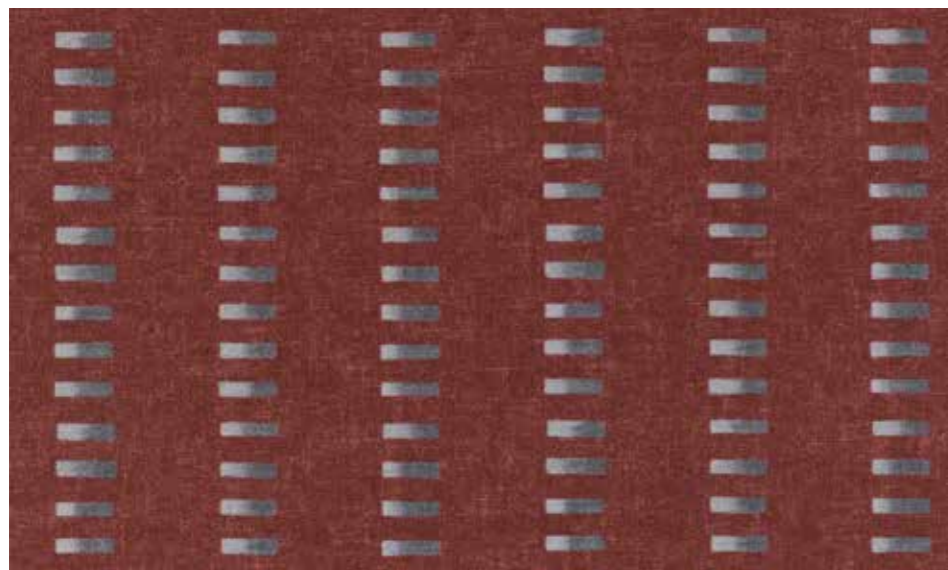
530032 | Spin zinc



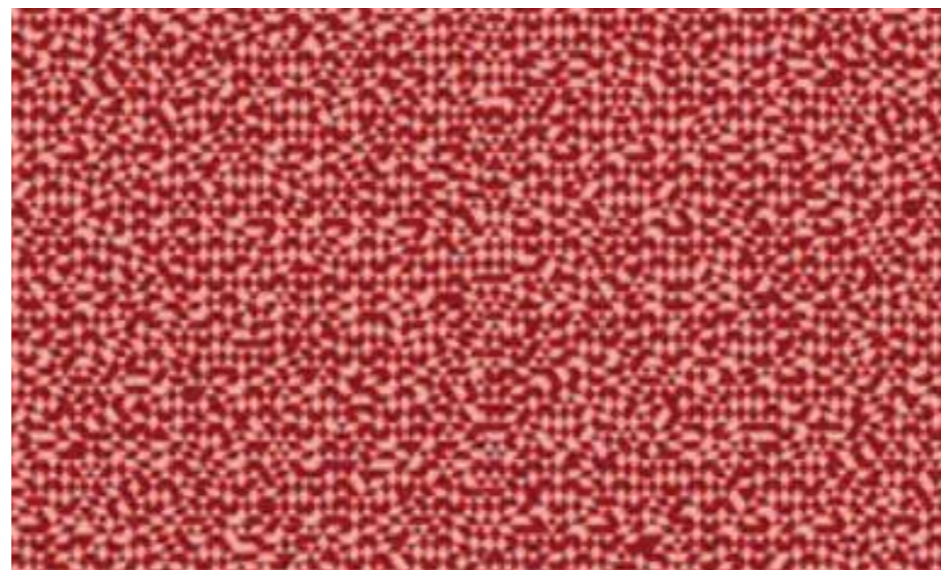
520012 | Cord forest



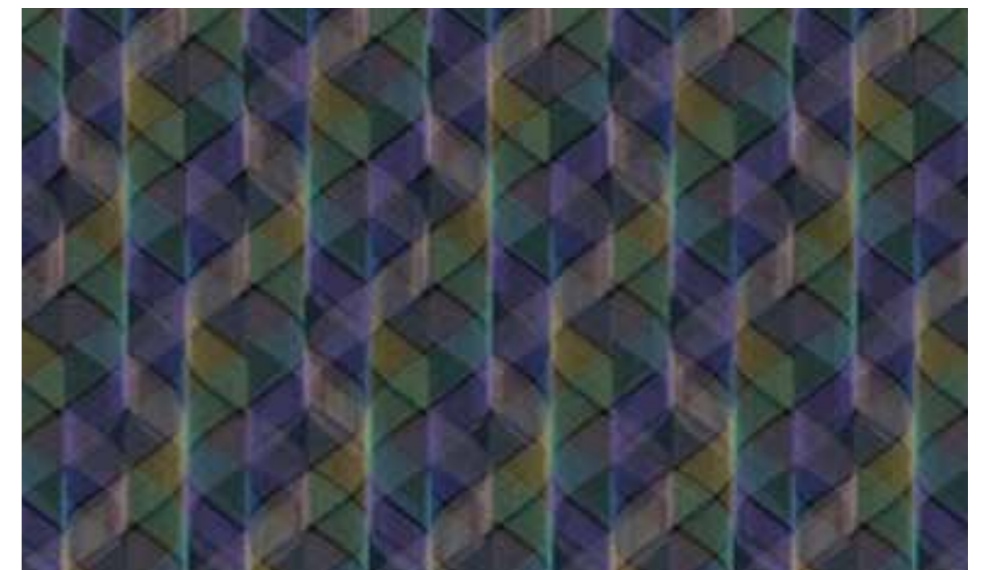
690006 | Transit oasis



510015 | Pulse spice



890007 | Facet orange



730004 | Helix tropicana