

Caring for Flotex®

Care Recommendations For

- Flotex® Sheet
- Flotex® Modular

Always refer to and follow the recommendations in the **General Floor Care Guidelines** of the Forbo Floor Guide prior to starting any cleaning processes.

Floor Care Chemicals & Equipment

Flotex® typically only requires **water** for cleaning, but in certain circumstances, a general-purpose cleaner may be used as a pre-spray. Cleaner should only be applied as a pre-spray, not applied with a machine. All cleaners should be diluted per the label directions and tested on a scrap piece of material to ensure compatibility with the flooring for colorfastness to avoid damage.

IMPORTANT! Damage caused to Forbo floors from the improper use of floor care chemicals and equipment is NOT covered under Forbo's warranty.

Initial and Routine Cleaning

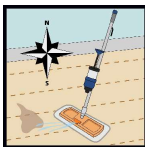
Newly installed floors must be protected from construction soil, traffic and damage. Initial cleaning procedures should be performed on all new installations exposed to normal construction soil and traffic. It is recommended to wait a minimum of five days before conducting any wet cleaning procedures in order to allow the adhesive to dry and cure properly. This timeframe can vary, depending on the substrate, site conditions and / or the adhesive used. Contact Forbo's Product Support & Education Services for additional information.



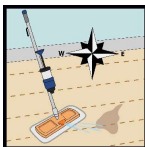
1. Remove all surface debris by vacuuming using a dual motor upright vacuum with a rotating brush. The brush should be approximately 1/8" below the vacuum cleaner casing to ensure proper agitation. Make several passes with the vacuum cleaner to ensure that all loose dirt is removed. Vacuum action should be fast forward and slow backward.
NOTE: Flotex® requires regular care to keep it clean and prevent the accumulation of dirt and soil. Proper cleaning, such as daily vacuuming and routine self-contained water extraction can reduce contamination to virtually non-existent levels. Identify sources of soiling and react to spills immediately before they dry.
2. Spot clean as necessary using either the Forbo Flotex® Spot Eraser or the "Scrape, Scrub & Rinse" method.

Spot Cleaning with the Forbo Flotex® Spot Eraser

1. Fill the pressurized bottle with water.
NOTE: For instructions on how to fill and pressurize the bottle, see the instructions supplied in the box with the Forbo Flotex® Spot Eraser.

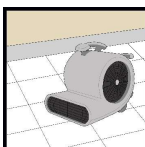


2. Using the Forbo Flotex® Spot Eraser, press the trigger to release water and pre-soak the spot. Scrub the spot in a North to South direction, allowing the Forbo Flotex® Spot Eraser to scrub and absorb the spot and water from the floor.



3. Using the Forbo Flotex® Spot Eraser, press the trigger to release water and pre-soak the spot. Scrub the spot in an East to West direction, allowing the Forbo Flotex® Spot Eraser to scrub and absorb the spot and water from the floor.

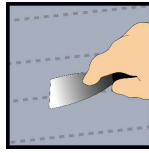
4. Repeat as necessary.



5. Allow the floor to dry thoroughly before allowing traffic. Use a snail fan if necessary.

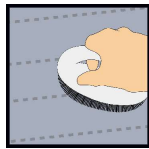
Caring for Flotex®

Spot Cleaning Using the Scrape, Scrub & Rinse Method

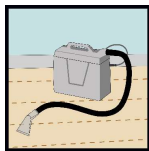


1. **SCRAPE** up spills and Spots using a putty knife or 5-in-1 tool and wipe excess soil onto a cloth.

2. Apply a liberal amount of clean water to the spot.



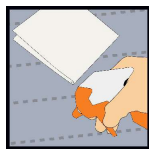
3. **SCRUB** the area using a brush. Don't be afraid to use aggressive scrubbing to remove set-in spills or stains. A stiff nylon brush can be used to remove scuff marks or other set in stains.



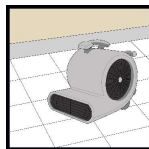
4. Recover the water and the remains of the spill or stain into a paper towel or cloth. Keep scraping until the spill or stain is completely removed. A spotter machine may be used to perform rinsing and recovery of the spill or stain.



5. If the spill or stain is not completely removed, refer to Forbo's Technical Bulletin "Flotex® Stain Chart" for a list of Spots and the recommended cleaning agent to remove them. If using a cleaning agent, do NOT leave any residue on Forbo Flotex®. Any chemicals applied to the flooring must be removed. The most common problem when caring for Forbo Flotex® is the overuse of cleaning chemicals. The buildup of chemicals and cleaners will de luster the Forbo Flotex® fibers and leave a dull appearance. Chemical buildup also attracts dirt faster and speeds soiling. Dilute chemicals in strict accordance with the manufacturer's recommendations. Repeat Step 4.



6. **RINSE** the area thoroughly with clean water to ensure that any cleaning solution is completely removed.



7. Allow the floor to dry thoroughly before allowing traffic. Use a snail fan if necessary.

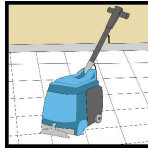
Interim Cleaning

Cleaning performed as needed, depending on the application, type of traffic and hours of operation. The following processes should be followed when the routine cleaning is not removing the soil from the floor.



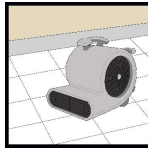
1. Remove all surface debris by vacuuming using a dual motor upright vacuum with a rotating brush. The brush should be approximately 1/8" below the vacuum cleaner casing to ensure proper agitation. Make several passes with the vacuum cleaner to ensure that all loose dirt is removed. Vacuum action should be fast forward and slow backward.
2. Spot clean as necessary using either the Forbo Flotex® Spot Eraser or the "Scrape, Scrub & Rinse" method.

Caring for Flotex®



3. Use a self-contained extraction machine, preferably with counter-rotating brushes, using clean water only. Set the brushes to ensure maximum agitation and contact with the fibers.

4. Follow each wet pass with a minimum of two dry passes.



5. Best practice is to allow the floor to dry for a minimum of 3 hours. Use a snail fan if necessary. If traffic is allowed on the floor before it has completely dried, the fibers are more susceptible to attract soil, requiring additional cleaning to achieve the desired result.

Restoration Cleaning

Restoration cleaning is important to maintain Flotex®. Periodically following the steps below will aid in the overall appearance of the floor. A good indication that restoration cleaning is required is when interim cleaning is not removing the soil from the floor.

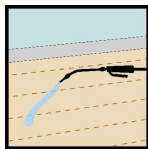
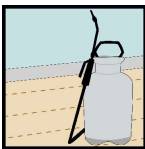


1. Remove all surface debris by vacuuming using a dual motor upright vacuum with a rotating brush. The brush should be approximately 1/8" below the vacuum cleaner casing to ensure proper agitation. Make several passes with the vacuum cleaner to ensure that all loose dirt is removed. Vacuum action should be fast forward and slow backward.

2. Spot clean as necessary using either the Forbo Flotex® Spot Eraser or the "Scrape, Scrub & Rinse" method.



3. Mix a cleaning solution of neutral pH cleaner according to the label directions. The pH of the cleaning solution must be between 6.0 – 8.0 pH.
NOTE: If there are hard water or mineral deposits present, mix a cleaning solution of hydrogen peroxide cleaner according to the label directions. The pH of the cleaning solution must be between 4.0 – 7.0 pH.



4. Apply the cleaning solution to the floor with a pump sprayer. Allow the solution to dwell on the floor for 5 – 10 minutes. Additional dwell time may be necessary for heavily soiled floors.

Caring for Flotex®

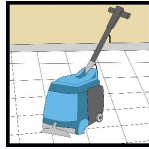
IMPORTANT!! THE ENTIRE FLOOR MUST BE COMPLETELY WET BEFORE MOVING TO THE NEXT STEP.

If the floor is dry, the friction between the nylon fibers of Flotex® and the brush can cause the machine to become uncontrollable.



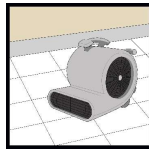
5. Scrub the floor with a 175 RPM floor machine using a flagged bristled brush such as a Malish nylon carpet shampoo brush #812915 or equivalent.

NOTE: These types of brushes typically need to be broken in prior to use. Contact the brush manufacturer for recommendations.



6. Use a self-contained portable extraction machine, preferably with counter-rotating brushes using clean water only. Set the brushes to the proper height to ensure maximum agitation and contact with the fibers.

7. Follow each wet pass with a minimum of two dry passes.



8. Allow the floor to dry for a minimum of three hours before allowing traffic. If traffic is allowed on the floor before it has completely dried, the fibers are more susceptible to attract soil, requiring additional cleaning to achieve the desired result. Use a snail fan if necessary.

NOTE: Weather, traffic and geographical location will influence the required frequency of this procedure. For example, in areas where there are large amounts of snow and chemicals used in the winter months it will likely be necessary to perform this procedure more frequently. In dry climates, or where there is less dirt traffic, it may not be necessary to perform this procedure as frequently.

For additional information, visit www.forboflooringNA.com or contact Forbo's Product Support & Education Services at 1-800-842-7839.