

RESILIENT FLOOR COVERINGS

STEP SAFETY VINYL



SAFETY VINYL

Forbo's Step safety flooring collection provides a complete range of products designed to meet safety demands across a wide range of applications, from general areas to more extreme areas such as commercial kitchens, wetroom (barefoot) areas and industrial applications.

The Step range meets all HSE and European safety norms and delivers safety with minimal compromise in terms of cleaning and maintenance due to the PUR finish.

All Step safety vinyl flooring has a guaranteed slip resistant performance throughout the life of the product.



surestep® laguna

This product combines barefoot and footwear slip resistance, for areas where both are likely and frequently will take place. Complying with the relevant norms for this application, Laguna is suitable for use in transition areas such as changing rooms and circulation areas.



safestep® aqua

This modern, organic design with a new and unique embossing shape is designed for barefoot (and soft soled shoes) areas. A flexible product, available across 12 colours, Safestep Aqua can easily be installed to meet the specific requirements of the wetroom sector.



Slips are amongst the most frequent accidents in the indoor environment. In our effort to make a positive contribution to the quality of indoor spaces our Step collection offers a wide variety of genuine safety flooring solutions. Many offer natural visuals such as wood and natural stone allowing customers to have the functionality of a true safety floor combined with the feeling of well-being which can be achieved through natural designs avoiding a 'cold' and institutional look and feel.



COMMITTED TO THE HEALTH OF ONE
WWW.FORBO-FLOORING.CO.UK/CHO

STEP COLLECTION AT A GLANCE

surestep® original

R10

Surestep Original offers a fresh alternative to conventional safety flooring with an improved cleaner aesthetic.



surestep® texture

R10

A contemporary design with a textile appearance for a soft and elegant look and feel. A textured embossing enhances the finish and all-over aesthetic of the product.



surestep® star

R10

Innovative, muted and sophisticated. The 13 contemporary tones offer hints of grey and a unique aesthetic. Surestep Star offers a brighter visual with holographic particles colour matched to the terrazzo or natural base colour of each item.



safestep® R11

R11

Available in 8 colours and designed specifically to match the areas where a high level of slip resistance is needed such as professional kitchens.



surestep® wood

R10

Realistic natural designs provide a warm ambience to all areas. The Surestep Wood palette of 12 colourways contains our most popular bestselling colours alongside new abstract woods and all-over designs.



safestep® R12

R12

Safestep R12 is a high slip resistant R12 rated floor which ensures slip resistance under even the most extreme conditions.



surestep® stone

R10

Stone designs with a modern look for contemporary areas. The range of 8 colours offers concrete designs, black and white granite and all-over effects.



surestep® wood decibel

R10

A genuine Health and Safety Executive compliant safety floor, Surestep Wood Decibel offers sustainable R10 slip resistance underfoot, beautiful wood designs and a 17dB impact sound reduction.



surestep® mineral

R10

Offered in five colourways, this delicate decorative design complements both small and large areas. A unique style where the chips in the transparent wear layer create depth and add refinement.



allura safety

R10

Our advanced Allura Safety luxury vinyl tiles combine the stylish aesthetics, flexibility and performance of Allura luxury vinyl tiles with the slip resistant properties of Step Safety flooring.



SAFETY VINYL

HSE Compliance – Wet Pendulum Test ≥36

All Step floors are tested using the TRRL Pendulum test, the preferred test method of the HSE which is used to assess the slip resistance of a floor surface. Floors can be tested with different rubber sliders to assess either footwear or barefoot use. Using this test, a Pendulum test value (PTV) of ≥36 or higher is considered to offer a low slip risk.

Surestep, Safestep R11 and R12 products offer wet Pendulum test values of ≥36 for footwear applications. In addition, Surestep Laguna and Safestep Aqua offer wet Pendulum test values of ≥36 for barefoot use areas.

Step Crystals

Many of the products in the Forbo Step range include Step Crystals which offer a clear and light aesthetic and also reduced soiling. As Step Crystals are made from recycled material, they also enhance the environmental performance of the collection.

Dual functionality

The Surestep Wood Decibel range is a genuine Health and Safety Executive compliant safety floor which has a 17dB impact sound reduction.

Our advanced Allura Safety luxury vinyl tiles range combines the stylish aesthetics, flexibility and performance of Allura luxury vinyl tiles with the slip resistant properties of Step safety flooring.

Creating better environments

- Our Step range contains up to 60% controlled vinyl waste in the backing.
- Many of the products in the Step range contain Step Crystals. They are made from recycled material so enhance the environmental performance of the product.
- We produce all our vinyl in Europe where it meets the highest possible REACH compliance standards for chemical content.
- Of all the electricity we buy, 100% comes from renewable sources. This means our vinyl production sites are part of an effective environmental management system and achieve ISO14001 certification.
- We use smart material constructions and durable finishes on our vinyl. A micro-embossing technology reduces the need for chemical cleaning and increases the floor's lifespan.



≥ 36
Wet Pendulum

≥ 20 microns
surface roughness

R10 17 dB ≥ 36
Wet Pendulum

R10 ≥ 36
Wet Pendulum

APPLICATIONS – STEP COLLECTION

surestep® R10

General and spillage areas with increased (a higher) slip risk

- High traffic areas, ramps or corridors
- Tea and coffee points
- General workrooms
- Service areas
- Kitchens, dining rooms to food servery areas
- Washroom areas



06

safestep® R11

Areas with increased slip risk due to continuous contamination

- Professional kitchens
- Florist shops
- Laundrettes



12

safestep® R12

Industrial and commercial facilities with increased slip risk due to continuous contamination

- Light industrial food production areas
- Woodworking rooms and other workshops
- Store rooms
- Commercial kitchens



13

APPLICATIONS – WETROOM COLLECTION

surestep® laguna

Wetroom areas

- Continuously wet areas, mainly barefoot but also footwear
- Changing rooms in combination with footwear
- Bathrooms in combination with footwear



16

safestep® aqua

Showers, swimming pool areas

- Continuously wet areas, barefoot and soft shoes
- Walk in showers
- Hydrotherapy areas
- Indoor swimming pools



17

surestep® original R10

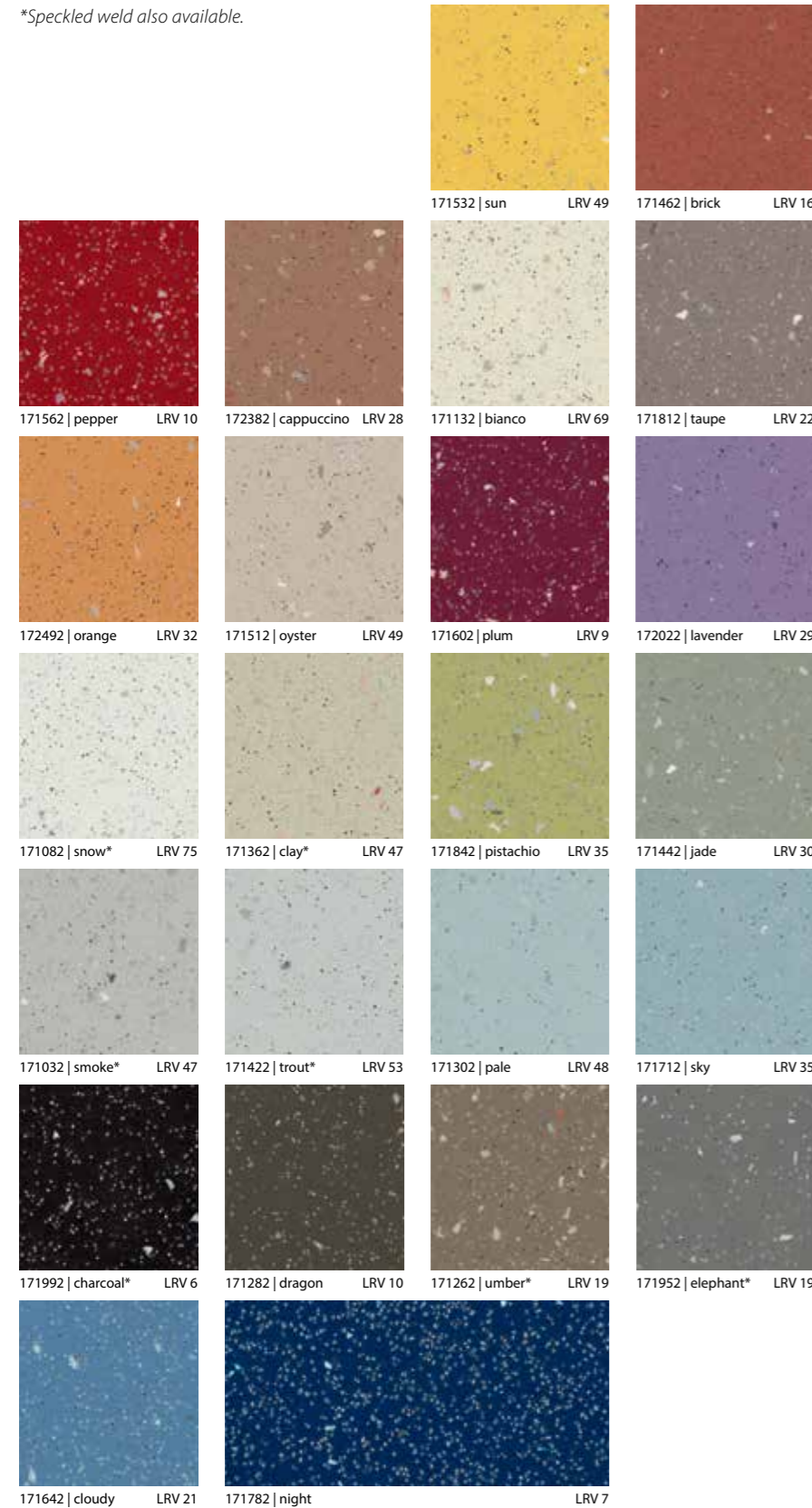
Surestep Original offers a fresh alternative to conventional safety flooring with an improved cleaner aesthetic. A palette of 30 colours combines gradations of hue and lightness.

Specifications: R10, ESf, TRRL ≥36, Rz ≥20

*Speckled weld also available.



Surestep Original 171842 | pistachio



Description	Sheet safety vinyl
Dimensions	Roll width 2m Roll length 20-27 Im
Total thickness	ISO 1765 2.0mm
Thickness wear layer	EN-ISO 24340 0.7mm
Collection size	30
Application	EN 10874 Class 34/43
Slip resistance	EN 13845 Annex C ESf DIN 51130 R10 TRRL Pendulum – Wet test – slider 96 ≥ 36
CE	EN 14041
Reaction to fire	EN 13501-1 B _{fl} -s1
Slip resistance	EN 13893 DS: ≥0.30

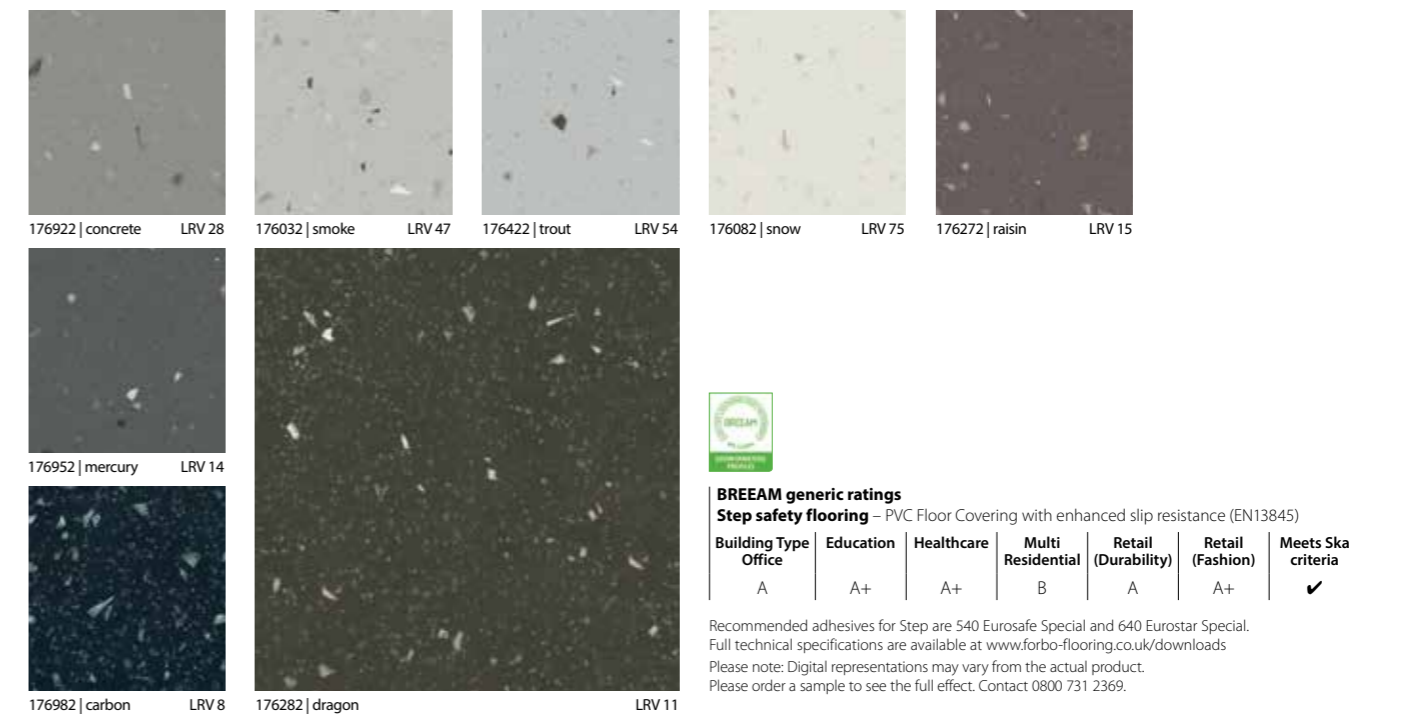
surestep® star R10

Innovative, muted and sophisticated. The 13 contemporary tones offer hints of grey and a unique aesthetic. Surestep Star offers a brighter visual with holographic particles colour matched to the terrazzo or natural base colour of each item.

Specifications: R10, ESf, TRRL ≥36, Rz ≥20



Surestep Star 176082 | snow + 176072 | pewter



Description	Sheet safety vinyl
Dimensions	Roll width 2m Roll length 20-27 Im
Total thickness	ISO 1765 2.0mm
Thickness wear layer	EN-ISO 24340 0.7mm
Collection size	13
Application	EN 10874 Class 34/43
Slip resistance	EN 13845 Annex C ESf DIN 51130 R10 TRRL Pendulum – Wet test – slider 96 ≥ 36
CE	EN 14041
Reaction to fire	EN 13501-1 B _{fl} -s1
Slip resistance	EN 13893 DS: ≥0.30



BREEAM generic ratings
Step safety flooring – PVC Floor Covering with enhanced slip resistance (EN13845)

Building Type	Education	Healthcare	Multi Residential	Retail (Durability)	Retail (Fashion)	Meets Ska criteria
Office	A+	A+	B	A	A+	✓

Recommended adhesives for Step are 540 Eurosafe Special and 640 Eurostar Special. Full technical specifications are available at www.forbo-flooring.co.uk/downloads. Please note: Digital representations may vary from the actual product. Please order a sample to see the full effect. Contact 0800 731 2369.

surestep® wood R10

Realistic natural designs provide a warm ambience to all areas. The Surestep Wood palette of 12 colourways contains our most popular bestselling colours alongside new abstract woods and all-over designs. All the wood designs have a clear and sharp visual due to the use of the almost invisible 'Step Crystals', which also guarantee lifetime slip resistance.

Specifications: R10, Esf, TRRL ≥36, Rz ≥20.

*4 of the Surestep Wood colours are also available in the Surestep Wood Decibel range, see page 14 for more information.



Surestep Wood 18942 | natural oak

Description	Sheet safety vinyl
Dimensions	Roll width 2m Roll length 20-27 Im
Total thickness	ISO 1765 2.0mm
Thickness wear layer	EN-ISO 24340 0.7mm
Collection size	12
Application	EN 10874 Class 34/43
Slip resistance	EN 13845 Annex C Esf DIN 51130 R10 TRRL Pendulum – Wet test – slider 96 ≥ 36
CE	EN 14041
Reaction to fire	EN 13501-1 B _{fl} -s1
Slip resistance	EN 13893 DS: ≥0.30



surestep® stone R10

Stone designs with a modern look for contemporary areas. The range of 8 colours offers concrete designs, black and white granite and all-over effects. With colours ranging from light to dark, all Surestep Stone colours are enriched by either carborundum particles or Step Crystals.

Specifications: R10, Esf, TRRL ≥36, Rz ≥20.



Description	Sheet safety vinyl
Dimensions	Roll width 2m Roll length 20-27 Im
Total thickness	ISO 1765 2.0mm
Thickness wear layer	EN-ISO 24340 0.7mm
Collection size	8
Application	EN 10874 Class 34/43
Slip resistance	EN 13845 Annex C Esf DIN 51130 R10 TRRL Pendulum – Wet test – slider 96 ≥ 36
CE	EN 14041
Reaction to fire	EN 13501-1 B _{fl} -s1
Slip resistance	EN 13893 DS: ≥0.30



Surestep Stone 17112 | sand concrete



BREEAM generic ratings
Step safety flooring – PVC Floor Covering with enhanced slip resistance (EN13845)

Building Type	Education	Healthcare	Multi Residential	Retail (Durability)	Retail (Fashion)	Meets Ska criteria
Office	A+	A+	B	A	A+	✓

Recommended adhesives for Step are 540 Eurosafe Special and 640 Eurostar Special. Full technical specifications are available at www.forbo-flooring.co.uk/downloads. Please note: Digital representations may vary from the actual product. Please order a sample to see the full effect. Contact 0800 731 2369.

surestep® mineral R10

Offered in five colourways, this decorative design complements both small and large areas. A unique style where the chips in the transparent wear layer create depth and add refinement.

Specifications: R10, ESf, TRRL ≥36, Rz ≥ 20.



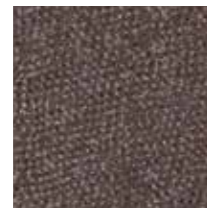
Surestep Mineral 89922 | cloud



89912 | opal LRV 48



89932 | sepia LRV 23



89952 | grape LRV 14



89982 | shadow LRV 19



89922 | cloud LRV 40

Description	Sheet safety vinyl	
Dimensions	Roll width 2m Roll length 20-27 Im	
Total thickness	ISO 1765	2.0mm
Thickness wear layer	EN-ISO 24340	0.7mm
Collection size	5	
Application	EN 10874	Class 34/43
Slip resistance	EN 13845 Annex C	ESf
	DIN 51130	R10
	TRRL Pendulum – Wet test – slider 96	≥ 36
CE	EN 14041	
Reaction to fire	EN 13501-1	B _{fl} -s1
Slip resistance	EN 13893	DS: ≥0.30

surestep® texture R10

A contemporary design with a textile appearance for a soft and elegant look and feel.

A textured embossing enhances the finish and all-over aesthetic of the product. The use of Step Crystals ensures that the style is not compromised while ensuring safety floor functionality. Available in 5 colours.

Specifications: R10, ESf, TRRL ≥36, Rz ≥20.



Surestep Texture 89012 | leather



89032 | linnen LRV 30



89082 | felt LRV 15



89092 | indigo LRV 16



89012 | leather LRV 16

Description	Sheet safety vinyl	
Dimensions	Roll width 2m Roll length 20-27 Im	
Total thickness	ISO 1765	2.0mm
Thickness wear layer	EN-ISO 24340	0.7mm
Collection size	5	
Application	EN 10874	Class 34/43
Slip resistance	EN 13845 Annex C	ESf
	DIN 51130	R10
	TRRL Pendulum – Wet test – slider 96	≥ 36
CE	EN 14041	
Reaction to fire	EN 13501-1	B _{fl} -s1
Slip resistance	EN 13893	DS: ≥0.30



Surestep Texture 89032 | linnen



BREEAM generic ratings
Step safety flooring – PVC Floor Covering with enhanced slip resistance (EN13845)

Building Type	Education	Healthcare	Multi Residential	Retail (Durability)	Retail (Fashion)	Meets Ska criteria
Office	A+	A+	B	A	A+	✓

Recommended adhesives for Step are 540 Eurosafe Special and 640 Eurostar Special. Full technical specifications are available at www.forbo-flooring.co.uk/downloads. Please note: Digital representations may vary from the actual product. Please order a sample to see the full effect. Contact 0800 731 2369.

safestep® R11 R11

Available in 8 colours and designed specifically to match the areas where a high level of slip resistance is needed such as professional kitchens. All R11 colours can be co-ordinated with products in the Surestep collection.

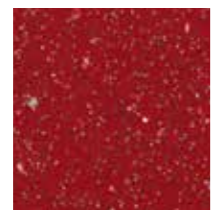
Specifications: R11, ESf, TRRL ≥40, Rz ≥45.



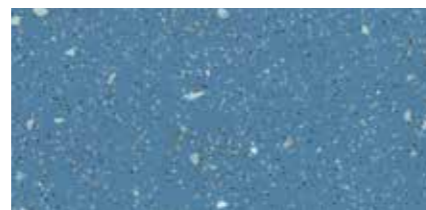
174362 | clay LRV 46



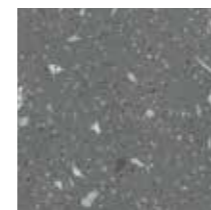
174262 | umber LRV 19



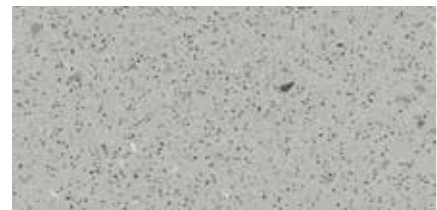
174562 | pepper LRV 10



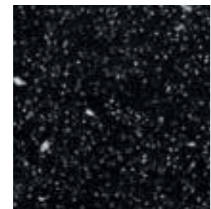
174642 | cloudy LRV 20



174952 | elephant LRV 19



174032 | smoke LRV 46



174992 | charcoal LRV 6



174962 | steel LRV 11

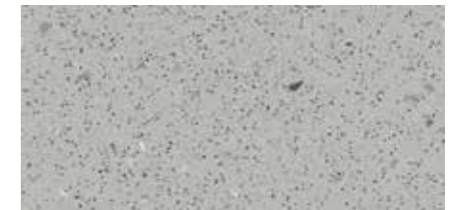
Description	Sheet safety vinyl	
Dimensions	Roll width 2m Roll length 20-27 lm	
Total thickness	ISO 1765	2.0mm
Thickness wear layer	EN-ISO 24340	0.7mm
Collection size	8	
Application	EN 10874	Class 34/43
Slip resistance	EN 13845 Annex C ESf	
	DIN 51130	R11
	TRRL Pendulum – Wet test – slider 96 ≥ 40	
CE	EN 14041	
Reaction to fire	EN 13501-1	B _{fl} -s1
Slip resistance	EN 13893	DS: ≥0.30

safestep® R12 R12

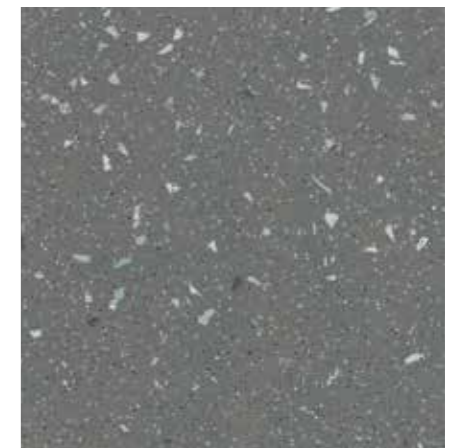
Safestep R12 is a high slip resistant R12 rated floor which ensures slip resistance under even the most extreme conditions.

Available across four soil-hiding colourways Safestep R12 can also be colour matched with products in the Surestep collection and with Safestep R11.

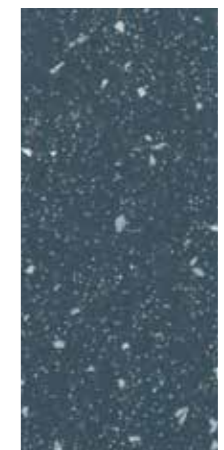
Specifications: R12, ESf, TRRL ≥50, Rz ≥60.



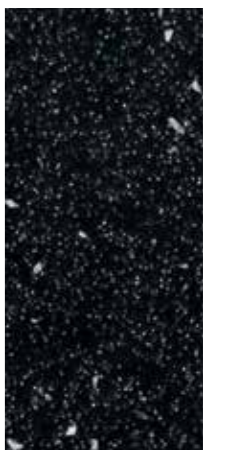
175032 | smoke LRV 45



175952 | elephant LRV 19



175962 | steel LRV 11



175992 | charcoal LRV 7



BREEAM generic ratings

Step safety flooring – PVC Floor Covering with enhanced slip resistance (EN13845)

Building Type	Education	Healthcare	Multi Residential	Retail (Durability)	Retail (Fashion)	Meets Ska criteria
Office	A+	A+	B	A	A+	✓

Recommended adhesives for Step are 540 Eurosafe Special and 640 Eurostar Special. Full technical specifications are available at www.forbo-flooring.co.uk/downloads. Please note: Digital representations may vary from the actual product. Please order a sample to see the full effect. Contact 0800 731 2369.

surestep® wood decibel R10 17 dB

A genuine Health and Safety Executive compliant safety floor, Surestep Wood Decibel offers sustainable R10 slip resistance underfoot, beautiful wood designs and a 17dB impact sound reduction.

Unlike traditional safety floors, Surestep Wood Decibel is uniquely available in 2m, 3m and 4m widths.*

Specifications: Class A, R10, ESf, TRRL ≥36, Rz ≥20.



Surestep Wood Decibel **71872** | warm teak



718322 | light beech 2m LRV 33
718323 | light beech 3m
71832 | light beech 4m

718442 | middle beech 2m LRV 30
718443 | middle beech 3m
71844 | middle beech 4m

733372 | golden oak 2m LRV 24
733373 | golden oak 3m
73337 | golden oak 4m

722192 | washed brown 2m LRV 10
722193 | washed brown 3m
72219 | washed brown 4m

718162 | red cherry 2m LRV 22
718163 | red cherry 3m
71816 | red cherry 4m

718222 | sunny beech 2m LRV 35
718223 | sunny beech 3m
71822 | sunny beech 4m



774062 | light oak 2m LRV 32
774063 | light oak 3m
77406 | light oak 4m

777972 | real oak 2m LRV 25
777973 | real oak 3m
77797 | real oak 4m

718722 | warm teak 2m LRV 14
718723 | warm teak 3m
71872 | warm teak 4m



718912 | rustic oak 2m LRV 19
718913 | rustic oak 3m
71891 | rustic oak 4m

718922 | natural oak 2m LRV 31
718923 | natural oak 3m
71892 | natural oak 4m

722182 | oak 2m LRV 21
722183 | oak 3m
72218 | oak 4m

Description	Sheet safety vinyl
Dimensions	Roll width 2/3/4m Roll length 20-27 lm
Total thickness	ISO 1765 3.0mm
Thickness wear layer	EN-ISO 24340 0.7mm
Collection size	12
Application	EN 10874 Class 34/43
Slip resistance	EN 13845 Annex C ESf
	DIN 51130 R10
	TRRL Pendulum – Wet test – slider 96 ≥ 36
CE	EN 14041
Reaction to fire	EN 13501-1 B _{fl} -s1
Slip resistance	EN 13893 DS: ≥0.30



BREEAM generic ratings
Step safety flooring – PVC Floor Covering with enhanced slip resistance (EN13845)

Building Type	Education	Healthcare	Multi Residential	Retail (Durability)	Retail (Fashion)	Meets Ska criteria
Office	A+	A+	B	A	A+	✓

Recommended adhesives for Step are 540 Eurosafe Special and 640 Eurostar Special. Full technical specifications are available at www.forbo-flooring.co.uk/downloads. Please note: Digital representations may vary from the actual product. Please order a sample to see the full effect. Contact 0800 731 2369.

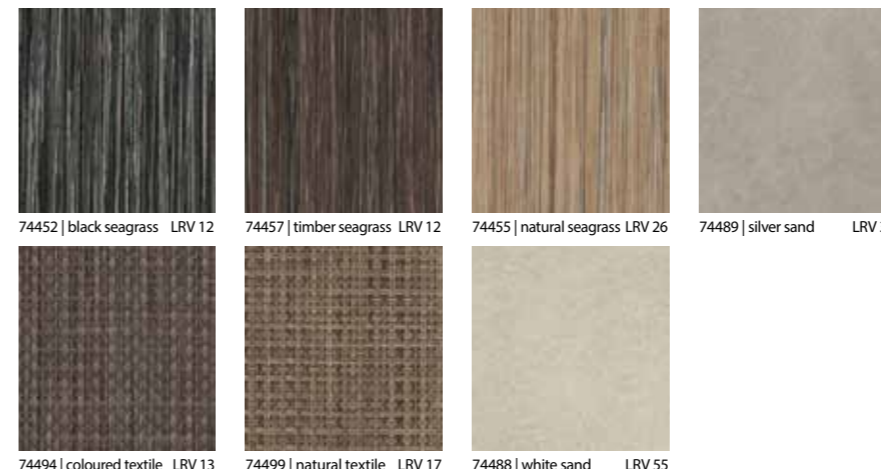
*Surestep wood decibel is available as a special order. Minimum order quantities apply.

allura safety R10

Our advanced Allura Safety luxury vinyl tiles combine the stylish aesthetics, flexibility and performance of Allura luxury vinyl tiles with the slip resistant properties of Step Safety flooring.

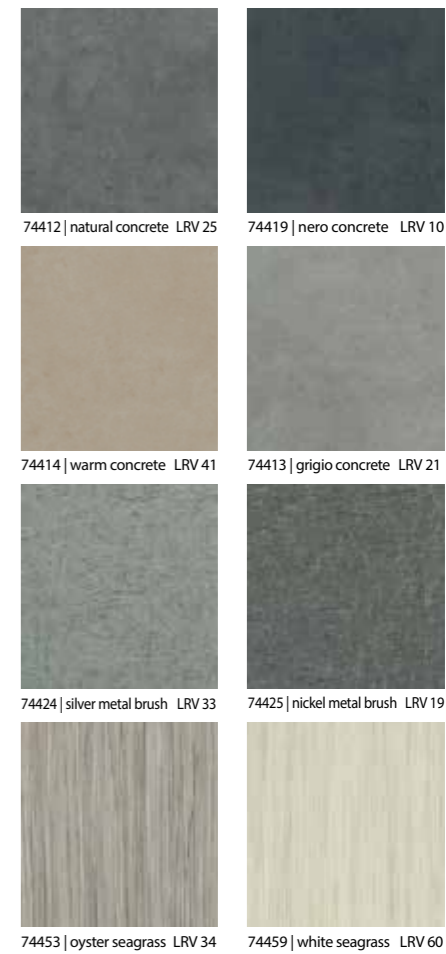


Allura Safety **w74413** | grigio concrete



74452 | black seagrass LRV 12
74457 | timber seagrass LRV 12
74455 | natural seagrass LRV 26
74489 | silver sand LRV 32

74494 | coloured textile LRV 13
74499 | natural textile LRV 17
74488 | white sand LRV 55



74412 | natural concrete LRV 25
74419 | nero concrete LRV 10

74414 | warm concrete LRV 41
74413 | grigio concrete LRV 21

74424 | silver metal brush LRV 33
74425 | nickel metal brush LRV 19

74453 | oyster seagrass LRV 34
74459 | white seagrass LRV 60

Description	Luxury safety tiles
Dimensions	48cm x 48cm
Total thickness	ISO 1765 2.5mm
Thickness wear layer	EN-ISO 24340 0.7mm
Collection size	16
Application	EN 10874 Class 34/43
Slip resistance	EN 13845 Annex C ESf
	DIN 51130 R10
	TRRL Pendulum – Wet test – slider 96 ≥ 36
CE	EN 14041
Reaction to fire	EN 13501-1 B _{fl} -s1
Slip resistance	EN 13893 DS: ≥0.30



BREEAM generic ratings
Allura safety – PVC Floor Covering with enhanced slip resistance (EN13845)

Building Type	Education	Healthcare	Multi Residential	Retail (Durability)	Retail (Fashion)	Meets Ska criteria
Office	A+	A+	B	A	A+	✓

Recommended adhesives for Step are 540 Eurosafe Special and 640 Eurostar Special. Full technical specifications are available at www.forbo-flooring.co.uk/downloads. Please note: Digital representations may vary from the actual product. Please order a sample to see the full effect. Contact 0800 731 2369.

74496 | indigo textile LRV 9

surestep® laguna R10 wetroom

Innovation in wetroom flooring

Safestep Aqua and Surestep Laguna combine functionality with beautiful design. Both products are available in a fresh, contemporary palette suitable for all types of wetroom applications.

Surestep Laguna

This product combines barefoot and footwear slip resistance, for areas where both are likely and frequently will take place. Complying with the relevant norms for this application, Laguna is suitable for use in transition areas such as changing rooms and circulation areas. The subtle, soil hiding design is available in 12 colourways, offering a clean and fresh look. Suitable for wheelchair use.

Specifications: Class B, R10, ESf + ESb, TRRL ≥36, Rz ≥20.



Surestep Laguna 181202 | oyster

181012 misty LRV 63	181262 trout LRV 55	181152 smoke LRV 48	181232 taupe LRV 23	181352 steel LRV 11
181292 pale LRV 50	181202 oyster LRV 50	181182 tender LRV 60	181322 jade LRV 29	181092 elephant LRV 18
181052 slateblue LRV 29	181122 charcoal LRV 5			

Description	Sheet safety vinyl	
Dimensions	EN-ISO 24341	Roll width 2.0m Roll length 20-27 Im
Total thickness	ISO 1765	2.0mm
Thickness wear layer	EN-ISO 24340	0.7mm
Collection size	12	
Application	EN 10874	Class 34/43
Slip resistance	EN 13845 Annex C	ESb/ESf
	DIN 51130	R10
	TRRL Pendulum – Wet test – slider 96	≥ 36
CE	EN 14041	
Reaction to fire	EN 13501-1	B _{fl} -s1
Slip resistance	EN 13893	DS: ≥0.30

safestep® aqua R10 wetroom

Safestep Aqua

This modern, organic design with a new and unique embossing shape is designed for barefoot (and soft soled shoes) areas. A flexible product, available across 12 colours, Safestep Aqua can easily be installed to meet the specific requirements of the wetroom sector. The clean and modern collection meets the hygienic and aesthetic requirements of application areas such as bathrooms and swimming pool surrounds. Suitable for wheelchair use.

Specifications: Class C, R10, ESb, TRRL ≥36, Rz ≥20.



Safestep Aqua 180052 | slateblue + 181261 | trout + 180352 | steel

180292 pale LRV 49	180202 oyster LRV 50	180232 taupe LRV 22	180352 steel LRV 10	180052 slateblue LRV 29	180182 tender LRV 61
180322 jade LRV 29	180092 elephant LRV 17	180122 charcoal LRV 5			

BREEAM generic ratings
Step safety flooring – PVC Floor Covering with enhanced slip resistance (EN13845)

Building Type	Education	Healthcare	Multi Residential	Retail (Durability)	Retail (Fashion)	Meets Ska criteria
Office	A+	A+	B	A	A+	✓

Recommended adhesives for Wetroom are 540 Eurosafe Special, 640 Eurostar Special and 140 Euromix. Full technical specifications are available at www.forbo-flooring.co.uk/downloads. Please note: Digital representations may vary from the actual product. Please order a sample to see the full effect. Contact 0800 731 2369.

Description	Sheet safety vinyl	
Dimensions	EN-ISO 24341	Roll width 2.0m Roll length 20-27 Im
Total thickness	ISO 1765	2.0mm
Thickness wear layer	EN-ISO 24340	0.7mm
Collection size	12	
Application	EN 10874	Class 34/43
Slip resistance	EN 13845 Annex C	ESb/ESf
	DIN 51130	R10
	TRRL Pendulum – Wet test – slider 96	≥ 36
CE	EN 14041	
Reaction to fire	EN 13501-1	B _{fl} -s1
Slip resistance	EN 13893	DS: ≥0.30

Forbo Flooring Systems is part of the Forbo Group, a global leader in flooring and movement systems, and offers a full range of flooring products for commercial and affordable housing and new build markets. High quality linoleum, vinyl, textile, flocked and entrance flooring products combine functionality, colour and design, offering total flooring solutions for any environment.



UK

Forbo Flooring UK Limited
High Holborn Road
Ripley
Derbyshire DE5 3NT

London EC1 showroom

79 St John Street, Clerkenwell
London EC1M 4NR
Tel: 0207 553 9300

For commercial enquiries:

If calling from the North,
Midlands, London & South East
Tel: 0800 0282 162
Fax: 01772 646 912

If calling from Scotland & South West

Tel: 0800 0935 258
Fax: 01592 643 999

Nuway enquiries:

Tel: 01773 740 688
Fax: 01773 740 640

Residential enquiries:

Tel: 0800 0935 846
Fax: 01592 643 999

Email: info.flooring.uk@forbo.com
www.forbo-flooring.co.uk

Samples:

Tel: **0800 731 2369**
email: samples.uk@forbo.com

Ireland

Forbo Ireland Ltd
2 Deansgrange Business Park
Blackrock
Co Dublin

Tel: 00353 1 2898 898
Fax: 00353 1 2898 177

Email: info.ireland@forbo.com
www.forbo-flooring.ie

Find us on



Registered office:

Forbo Flooring UK Limited
High Holborn Road
Ripley
Derbyshire DE5 3NT
Registered in England 9200318



**COMMITTED
TO THE HEALTH
OF ONE**

WWW.FORBO-FLOORING.CO.UK/CHO
WWW.FORBO-FLOORING.IE/CHO

This programme expresses our ambition to design and manufacture floor coverings that benefit every individual by helping to provide safe, hygienic and comfortable living and working environments.