



TECHNICAL SPECIFICATIONS

Technical specifications

Flotex FR meets the requirements of EN 1307

	Total thickness	ISO 1765	Approx. 3.3 mm
	Wear classification	EN 1307	Class 33
	Roll width		200 cm
	Roll length		30 m
	Suitability for castor chairs	EN 985	Castor chair continuous use
Colour fastness ratings:			
	Light	EN ISO 105/B02	6
	Rubbing	EN ISO 105/X12	≥ 4
	Water	EN ISO 105/E01	≥ 4
	Pile material		100% polyamide
	Construction		Flocked textile floor covering
	Backing		Resilient waterproof backing
	Total weight	ISO 8543	Approx. 1225 gram/m ²
	Pile thickness	ISO 1766	Approx. 2 mm
	Pile installation weight	ISO 8543	Approx. 250 gram/m ²
	Impact sound insulation	ISO 140-8	Δ Lw = approx. 22 dB
	Dimensional stability	ISO 2551	≤ 0.20%
	Flexibility	ISO 24344	No cracking (10 mm diameter Mandrel)
	Electrical resistance	ISO 10965	Approx. 10 ⁹ Ω
	Comfort class	EN 1307	LC1
	Flotex FR product meets the demands set by EN 14041		
	Fire behaviour	EN 13501-1	B _{fl} -s1
	Slip resistance	EN 13893	> 0.30
	Body voltage	ISO 6356	< 2.0 kV
Fire rating:			
	IMO Resolution A653(16)		Pass
	IMO Resolution MSC 307(88) Annex 1 Part 2		Pass
	IMO Resolution MSC 307(88) Annex 1 Part 5		Pass
	US Coast Guard approval ref: 164.117/1121/WCL		MED0364

flotex[®] colour FR

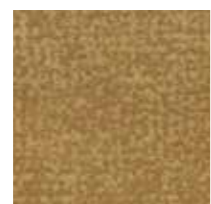
Flotex Colour is a collection of three designs (Metro, Penang and Calgary) which together form a rhapsody of colour across a broad spectrum.

The swatches shown are only a small selection of the colourways available. Please refer to the Forbo Flooring website in order to see the full colour palette.

flotex[®] metro FR



246033 | Metro emerald



246013 | Metro amber



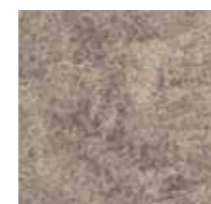
482006 | Penang sage



482022 | Penang amber



290030 | Calgary spa



290011 | Calgary quartz



246031 | Metro cherry



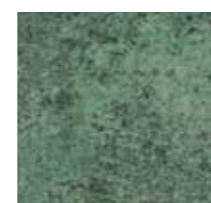
246025 | Metro tangerine



482024 | Penang purple



482011 | Penang sapphire



290009 | Calgary moss



290031 | Calgary cherry



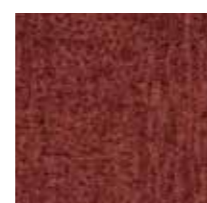
246023 | Metro horizon



246008 | Metro anthracite



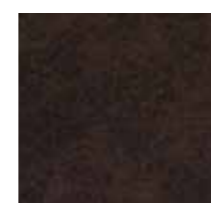
482031 | Penang ash



482073 | Penang brick



290022 | Calgary condor



290020 | Calgary toffee

flotex[®] penang FR

flotex[®] calgary FR

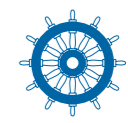
Our recommended adhesive for our collection of Flotex FR carpet tiles is Eurocol 540 Eurosafe Special. Please contact customer services for more information.

Flotex FR is made to order.

Final production might vary within commercial tolerances from sample.

Manufacturing specifications subject to normal industry tolerances.

Forbo reserves the right to improve the specification of its products without giving prior notice. Errors and omissions excepted.



IMO Certificate No. 164.117/1121/WCL MED0364