

# flotex® modular

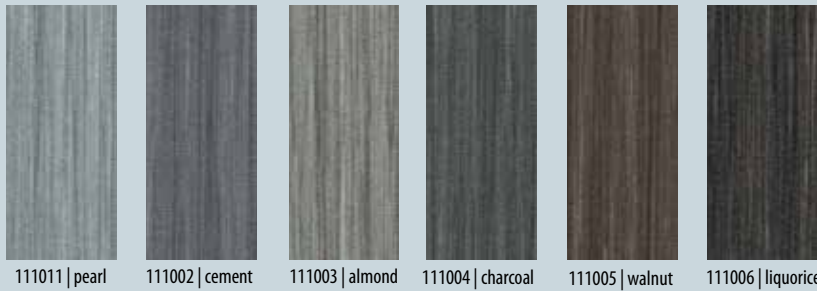
**Expand the possibilities!**

The beauty and functionality of **Flotex®** waterproof high performance carpet - now available in modular planks.

**Flotex®** combines the performance of a resilient flooring with the slip resistant and acoustic properties usually associated with textiles. **Flotex®** is strong and hygienic, and, being completely waterproof, it is also the only truly washable textile floor covering.

**Flotex®** offers a warm, comfortable, hygienic flooring solution that is suitable for any commercial specification. Flotex is hygienic and is a supplement to, not a substitute for, standard infection control practices, and has been shown to reduce microbial contamination based on Independent Laboratory Testing.

## seagrass



## triad



## box cross

Coming soon!



FLOORING SYSTEMS

creating better environments

# flotex® modular

- **Waterproof** - 100% impervious to water
- **Durable** - 70 million upright nylon 6.6 fibers per m<sup>2</sup>, resists crushing and matting
- **Easy to Clean** - Dense, upright fiber makes it easier to clean (no loops or twists to trap dirt)
- **Soil & Stain Resistant** - Most spills can be removed, including permanent marker
- **Slip Resistant Wet & Dry** - Provides safety and minimizes liability from slips and falls
- **Indoor Air Quality** - Unlike the twisted fibers of carpet which can trap and conceal dirt and allergens, the dense, upright fibers of Flotex® easily release dirt and allergens by vacuuming
- **Hygienic** - Flotex is a supplement to, and not a substitute for, standard infection control practices, and has been shown to reduce microbial contamination based on Independent Laboratory Testing.
- Contributes to LEED credits  
(visit website for more information)

## PHYSICAL CHARACTERISTICS (PLANKS)

(dimensions are approximate)

Plank size ..... 10" x 40" approx. (25 cm x 100 cm)  
 Gauge ..... 0.21" approx. (5.3 mm)  
 Backing..... recycled vinyl cushioned backing  
 Packaging..... 10 planks (26.91 ft<sup>2</sup> / 2.5 m<sup>2</sup>)  
 Wear layer density ..... approx. 70 million fibers / m<sup>2</sup>

## wood



151003 | silver wood



151002 | grey wood



151001 | black wood



151005 | red wood



151006 | antique wood



151004 | american wood

## concrete



139001 | cloud



139003 | smoke



139002 | thunder



139004 | storm

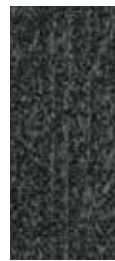
Coming soon!

## lava

Coming soon!



145014 | pelee



145001 | vesuvius



145011 | krakatoa



145010 | thera



145003 | etna



145002 | tambora



145005 | madeira



145006 | nikko



145018 | malos



145007 | pinatubo



145017 | fuji



145016 | ebeko



145009 | trident



145004 | agua



145015 | fayal



145008 | koro



145013 | elbrus



145012 | vuisini



FLOORING SYSTEMS



for more information call:  
 1-800-842-7839 (US)  
 1-800-268-8108 (Canada)  
 or visit  
[www.forboflooringNA.com](http://www.forboflooringNA.com)