

HOLD DOWN TABS

Unlike many other hold down tabs Prolink Hold Down Tabs (HDT) are not installed by removing hinges on the belt module. To improve strength, stability and cleanability they are moulded on a narrow module and will integrate into the build pattern as part of the belt surface.

Correct position for the guiding wear strips

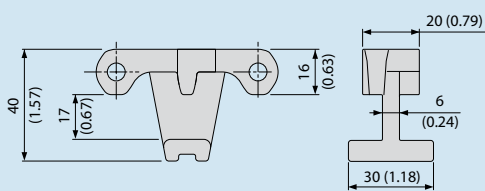
Please note the position of the Hold Down Tabs will be slightly offset from the belt centre line. The default position (centre of the HDT) will unless otherwise specified be:

Belt width/2 + ½ increment
(measure from the left hand side, in direction of travel)

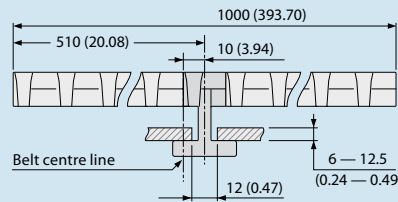
Example: A 1000 mm wide S6.1 belt with a width increment of 20 mm will have HDT positions at:
 $1000/2 + \frac{1}{2} \times 20 = 510$ mm (from the left hand side)



Series 6.1



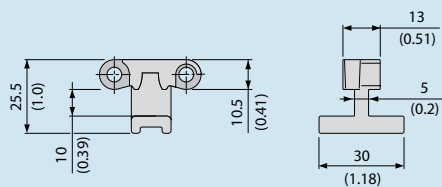
S6.1 Example | ½ increment = 10 mm



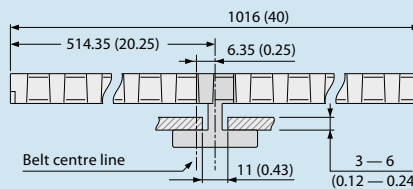
Sprocket options using HDT

| Size | Maximum bore [mm (in)] | |
|------|------------------------|------------|
| | round | square |
| Z6 | 20 (0.75) | 15 (0.5) |
| Z8 | 50 (1.75) | 40 (1.5) |
| Z10 | 80 (3.0) | 60 (2.5) |
| Z12 | 110 (4.25) | 85 (3.25) |
| Z16 | 170 (6.5) | 130 (5.25) |

Series 8



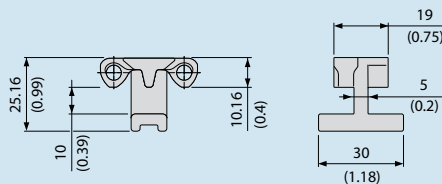
S8 Example | ½ increment = 6.35 mm



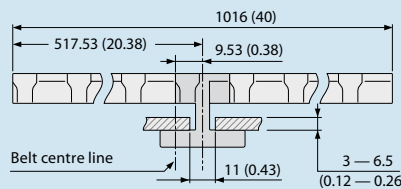
Sprocket options using HDT

| Size | Maximum bore [mm (in)] | |
|------|------------------------|-----------|
| | round | square |
| Z11 | 40 (1.5) | 30 (1.25) |
| Z12 | 45 (1.75) | 35 (1.5) |
| Z15 | 70 (2.75) | 55 (2.0) |
| Z18 | 95 (3.5) | 70 (2.75) |
| Z19 | 100 (3.75) | 75 (3.0) |

Series 10



S10 Example | ½ increment = 9.53 mm



Sprocket options using HDT

| Size | Maximum bore [mm (in)] | |
|------|------------------------|-----------|
| | round | square |
| Z6 | not recommended | |
| Z8 | 20 (0.75) | 15 (0.5) |
| Z10 | 35 (1.25) | 25 (1.0) |
| Z12 | 50 (1.75) | 35 (1.5) |
| Z15 | 70 (2.75) | 55 (2.0) |
| Z16 | 80 (3.0) | 60 (2.25) |
| Z18 | 95 (3.5) | 70 (2.75) |
| Z20 | 110 (4.25) | 85 (3.25) |

All imperial dimensions (inches) are rounded off.