

Installation Guidance - Flotex Tiles and Planks

General Advice

The appearance, performance and durability of the installed floorcovering will be determined to a large extent by the quality of the prepared subfloor and the conditions in which they are laid.

Subfloor preparation should be carried out in accordance with AS 1884:2012 "Floor coverings - Resilient sheet and tiles - Installation practices". Areas to receive flooring should be clean, free from other trades, fully enclosed and weather tight. Subfloors should be clean and free of contaminants, smooth, sound and permanently dry.

- Always conduct moisture tests on all substrates. All ground based level floors should have an effective moisture barrier.
- Problems associated with plasticizer migration from PVC materials can lead to dimensional instability in carpet tiles. All subfloors of this type must be removed before installation.
- It is impossible to ensure that wood block floors are not loose or contain latent defects through aging. It is therefore strongly recommended that these are removed and that the subfloor is correctly prepared and, if necessary, a surface damp proof membrane or an asphalt screed applied before installation of carpet tiles.
- Raised access flooring panels have a tendency to settle shortly after installation and this should be taken into account when assessing the appearance of the Flotex tile/plank installation fitted onto such flooring systems. Ridges between uneven raised access floor panels will telegraph through to the finished tile installation. Uneven or loose floor panels should be levelled or re-fixed before installing Flotex tiles or planks.

Areas to receive flooring shall be adequately lit to allow for proper inspection of the substrate, installation and for final inspection.

It is essential that the laying area is at a steady temperature of 18 to 27°C for 48 hours prior to, during, and for 24 hours after installation. Prior to installation, the carpet tiles must be allowed to acclimatise in opened boxes for at least 24 hours in the above conditions. This is particularly important if the tiles have been stored or delivered in conditions of extreme temperature and/or humidity. Where the floorcoverings have been stored or transported immediately prior to delivery in temperatures below 10°C the acclimatisation period should be extended to 48 hours.

As with any floor covering, the use of different production batches will always result in visible shade differences. It is essential that different batches are not mixed in the same area. When ordering tiles, each floor area (plus spares) must be specified from the same batch. The batch number is clearly marked on the packaging and on the reverse side of each carpet tile and must be checked before commencement of installation.

Boxes should be checked to ensure that the correct tile type, colour, batch number and quantity have been received and that the tiles are in good condition. No claim will be accepted for incorrect colour, pattern or obvious damage if the tiles have been fitted.

Adhesive Recommendations and application

Flotex Tiles and Planks must be adhered using a high grab, all-over tackifier adhesive system; Forbo PS1 Tile Fix pressure sensitive adhesive is recommended.

The tackifier adhesive must be spread evenly over the entire floor area with particular attention to edges – this will ensure any perimeter tile cuts are fully bonded. Failure to fully bond all full tiles and tile cuts may result in individual tiles shifting and lifting.

Where perimeter tiles are not constrained by fixtures e.g. walls, edge strips etc. It is recommended that such tiles are adhered using a permanent adhesive; Forbo Fix 540 is recommended.

In most applications Forbo PS1 Tile Fix pressure sensitive adhesive will be sufficient heavy commercial usage areas, however, where tiles or planks are liable to be subject to heavy static or dynamic loads they should be fully adhered using Forbo Fix 540.

Adhesives must be applied according to the manufacturer's instructions and it is essential that tackifier adhesives are allowed to dry to a clear, tacky finish before laying the carpet tile. Failure to do so could result in a permanent non-release bond.

The open time of the adhesive will depend on site conditions and porosity of the base. It is best practice to conduct an adhesive bond test before starting the installation. Bond testing will assist in identifying both the working characteristics of the adhesive (waiting and working time) for the site conditions, and also any potential bonding problems.

If alternative adhesives are to be used consult with the supplier for usage information, guidance and warranty.

Note: adhesive coverage rates will be reduced on very porous subfloors such as plywood or sand cement screeds. Always clean away excess adhesive with a damp cloth before it is allowed to dry.

Flotex tiles and planks can be used in conjunction with under-floor heating systems. A separate guidance note "[Installation of Floor Coverings on Underfloor Heating Systems](#)" provides more information on the conditions required for installation in such circumstances.

Installation

The following instructions are intended to draw the fitter's attention to current "Best Practice", and must be followed for the relevant product guarantees to be valid. Installation must be carried out in accordance with the requirements of AS 1884:2012 "Floor coverings - Resilient sheet and tiles - Installation practices".

Setting Out

The location of the starting point in an installation is usually determined by the fitter to maximize the yield. This may be anywhere in the room, but would normally be located as near to the true centre as possible.

Having established the starting point for the installation, making some check measurements or dry laying a few rows of tiles will help to identify any potential problems or necessary adjustments to avoid small perimeter cuts.

Pile Direction

The arrow marks on the reverse of every tile indicate the direction of pile lay. The preference of the specifier as to monolithic*, tessellated or other visual effects must be confirmed before tiles are installed.

When laying tile or planks in a monolithic format follow the direction of the arrows, which should, where possible, point towards the main light source**.

Options for the direction of tile and plank installation will vary between product designs. The installation options are indicated on product sample books and below, but if there is any doubt check with Forbo Flooring prior to installation.

***Note:** the term 'broadloom' is often used as an alternative description of monolithic. Whichever term is used, it refers to the installation direction of the carpet tiles. It does not mean that the installation will be viewed as seamless.

****Note:** To prevent potential problems of deviation of wheeled traffic travelling across the dense pile of Flotex; it is strongly recommended that tiles and planks are laid with the pile running lengthways in the main direction of traffic when fitting in monolithic format. We suggest that with other installation formats, some tiles are dry laid to decide upon the optimum direction to suit the specific location requirements.

Cutting and Fitting

Flotex tiles and planks can be easily cut using a utility knife. Tiles and planks must be laid butt jointed, fitted tightly and cut accurately at perimeters.

On completion of the installation

First impressions may have more impact on the client than hours of skilled fitting.

The completed installation should be cleared of scrap material and debris, the floor vacuumed and any traces of adhesive residues removed from the floor and skirtings.

If the floor covering is to be protected from other trades or site traffic prior to project completion, a protection product should be chosen that is appropriate for the type and level of traffic likely to be experienced.

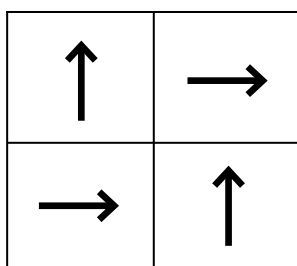
If the optimum performance of any new floor covering is to be achieved, it is important that the correct cleaning and maintenance procedures are used from day one.

Cleaning and maintenance guides for all Forbo Flooring Flotex ranges are available for download at:

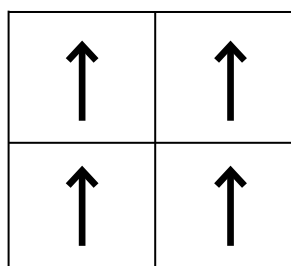
www.forbo-flooring.com.au/flotexdownloads

Cleaning and maintenance guides should be passed onto the main contractor, client or end user as appropriate on completion of the installation, and before any hand over clean is started.

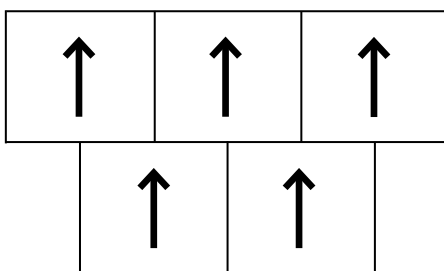
Flotex tile installation options



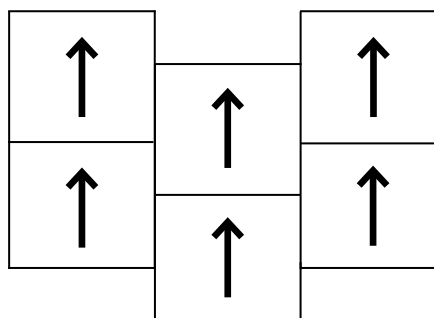
Tessellated



Monolithic/Broadloom



Brick



Half drop

Flotex Tile Range

Integrity²

Complexity

Pinstripe

Stratus & Cirrus

Recommended laying options

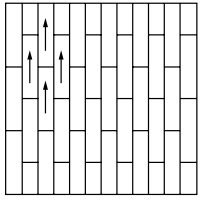
Tessellated

Tessellated; Brick

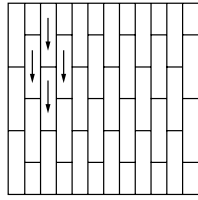
Tessellated; Brick; Half drop

Broadloom; Tessellated; Brick; Half drop

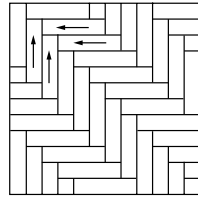
Flotex plank installation options



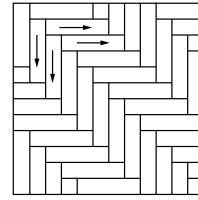
Half-drop
installation 1



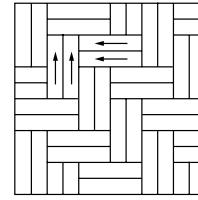
Half-drop
installation 2



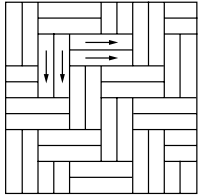
Herringbone
installation 1



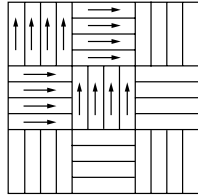
Herringbone
installation 2



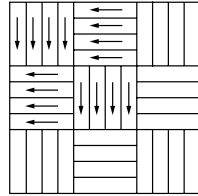
Double
herringbone
installation 1



Double
herringbone
installation 2



Weave
installation 1



Weave
installation 2

Please note that for each installation method above we have shown two images of each method with arrows pointing in different directions. It does not matter in which direction the design is installed but it is important that once an installation method has been chosen all planks get installed in the same direction.

Flotex Plank Range

Triad

Box Cross

Lava

Seagrass

Concrete

Wood

Recommended laying options

Half drop, Herringbone, Weave

Half drop, Random drop

Half drop, Herringbone, Weave

Half drop, Herringbone, Double herringbone, Weave

Half drop, Herringbone, Double herringbone, Weave

Half drop, Herringbone, Double herringbone, Weave

If in any doubt contact us:

Forbo Flooring Systems Pty Ltd

Tel: 1800 224 471

Fax: 1800 662 566

info.au@forbo.com

www.forbo-flooring.com.au

Additional Reference documents and information:

Forbo Floor Coverings Installation Guide: www.forbo-flooring.com.au/installation

AS1884:2012