

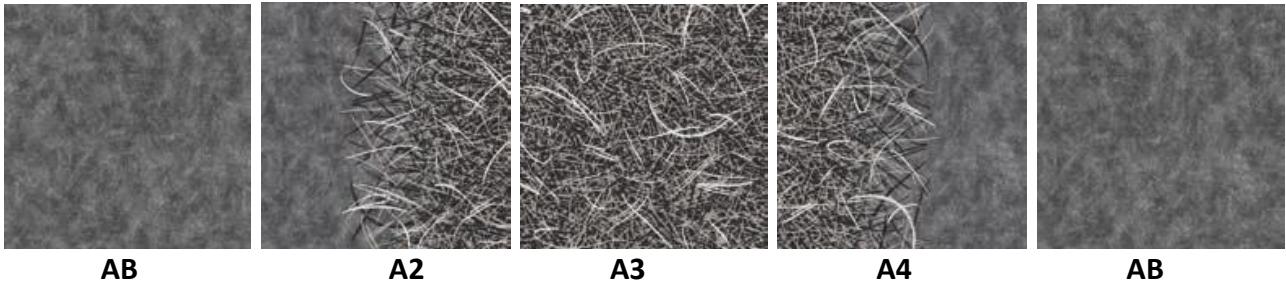
General Advice

Flotex by Starck is a unique collection of innovative Flotex designs. Flotex by Starck is installed using the same installation procedures and techniques as standard Flotex sheet products and this guide should be read in conjunction with the full installation guidance document for Flotex sheet products.

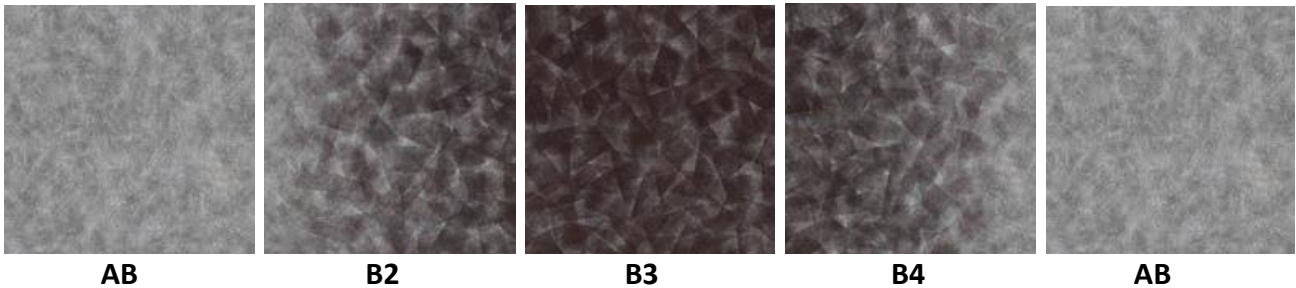
Design Elements

Each of the 3 designs, Vortex, Artist and Twilight, comprise 4 individual 2 metre wide sheet elements that can be randomly used to create patterns for projects that adapt to your needs and preferences.

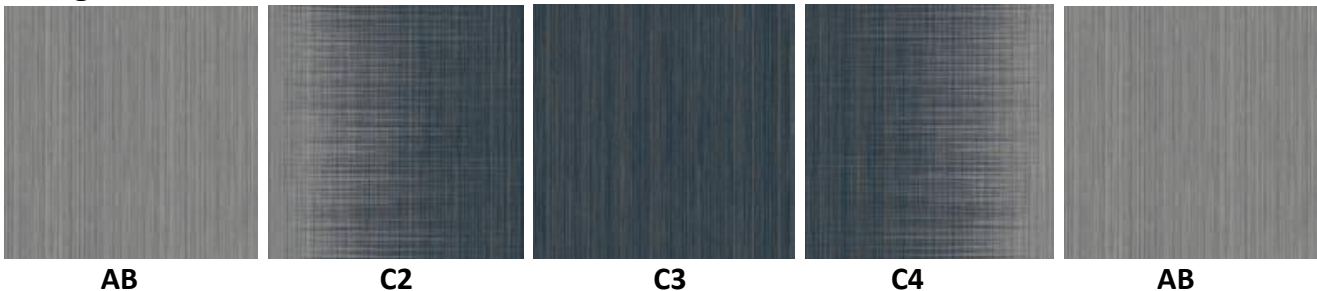
vortex



artist



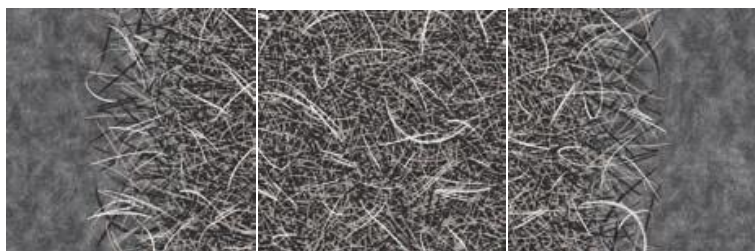
twilight



Combining Elements

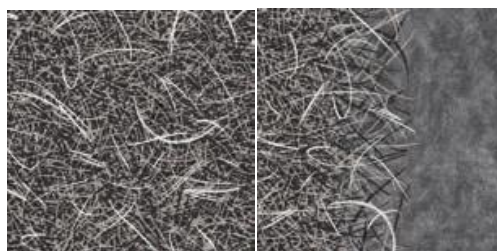
The flexibility of the designs makes the number of element combinations almost endless. Two of the same sheet elements can also be placed next to each other. Some options are illustrated below:

Using three sheet widths (6m)

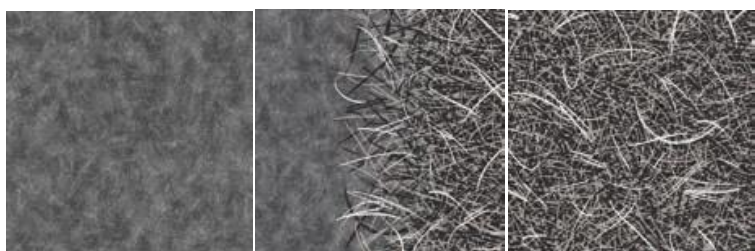


2+3+4

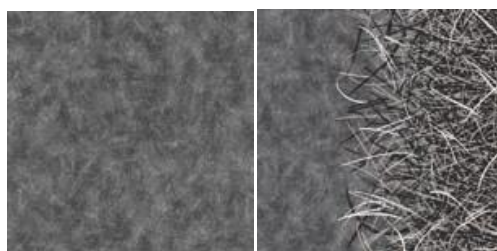
Using two sheet widths (4m)



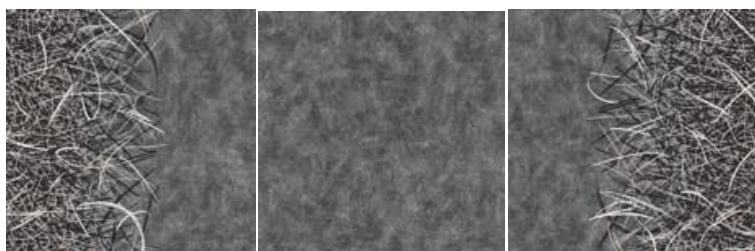
3+4



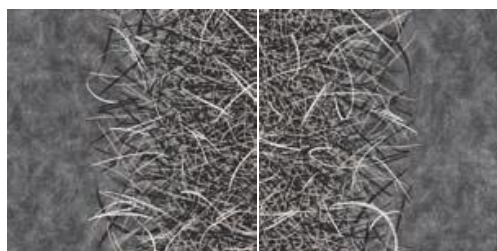
1+2+3



1+2



4+1+2



2+4

Planning and Ordering material

All items are made to order. For installations where more than one element of a design is to be fitted in the same area, **all items** need to be ordered at the same time to ensure full colour matching across all elements of the design.

Vortex and Artist designs have a 2m pattern repeat (indicated on the product backing of each design) and pattern matching is recommended. One additional pattern repeat is required for each drop to ensure full installation compatibility.

Twilight elements C2 and C4 have a pattern repeat that can be ignored if the designer allows/prefers.

Note:

Sheet elements cannot be split to make borders

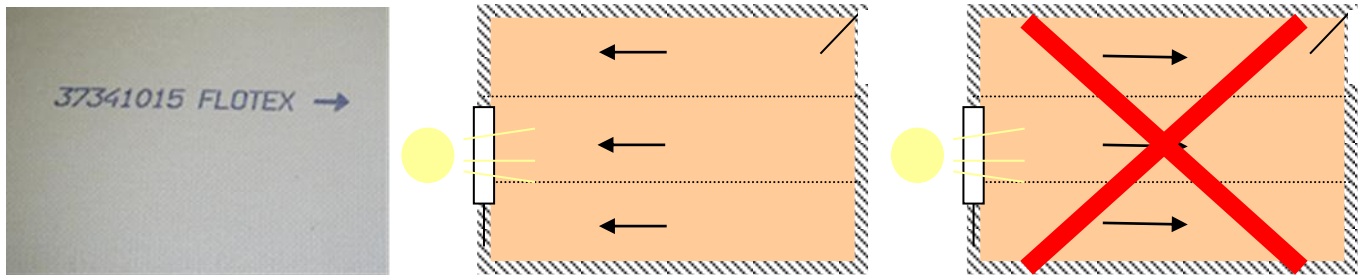
Flotex sheet must never be reverse laid. It is important to allow for this when ordering as each sheet element must be installed in the same direction.

Identification of design Elements

Each Element is identified on its packaging by the product reference and colour number. It is important to identify each element of the design and confirm the laying configuration required with the specifier/end user prior to installation.

Direction of Laying

The arrows on the back of the sheet indicate the pile direction. Lay the sheets edge to edge, following the direction of the arrows, which should point towards the main light source, **NEVER AWAY**.



If in any doubt contact us:

Forbo Flooring UK Ltd
Tel: 0800 0282 162
Fax: 01772 646912
Samples: 0800 731 2369
Info.flooring.uk@forbo.com
www.forbo-flooring.co.uk

Additional Reference documents/Information

Flotex Sheet Installation Guidance Note: <https://www.forbo.com/flooring/en-uk/downloads/flotex-flocked-flooring/pzxncx>

Forbo Floor Coverings Installation Guide. (Tel: 0800 731 2369)
BS8203:2017
The CFA Guide to Contract Flooring
(Tel: 01159 411126)