

Installation Guidance Note: Colorex Plus Tile Replacement

General Advice

Colorex plus is an interlocking, adhesive free tile system with a durable and scratch resistant high-density pressed vinyl tile top layer. In the event of localised damage that cannot be removed with normal cleaning methods such as deep gouges or heavy impact damage, individual tiles can be quickly and easily replaced with the minimum of disruption to the operational requirements of the usage area.

Tools Required



Double or triple cup suction lifter



Non-Marking Rubber Mallet

Procedure

1. Place the suction holder diagonally across one corner of the tile, lock the levers on the suction lifter and lift the tile. The tile should now be able to be separated from its adjacent tiles on two sides with the 'male' connectors of the adjacent tiles visible.



If the tile does not release from the adjacent tiles on two sides unlock the holder and re-position it on the next corner of the tile. Repeat on the third corner of the tile, if necessary, until the correct two-sided release of the tile is achieved.

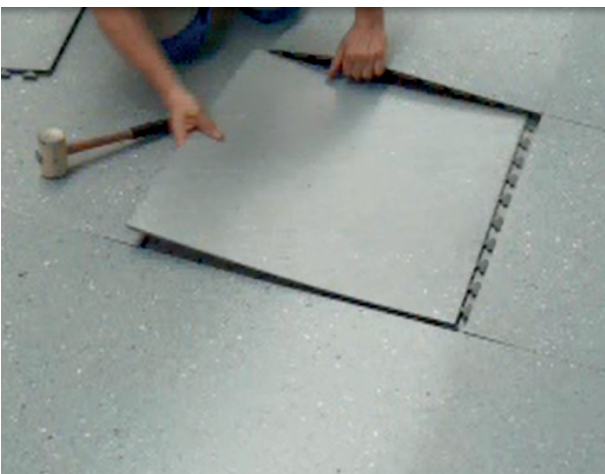
2. Once the tile has been freed from the 'male' connectors of the adjacent tiles place the rubber mallet under the tile to support it and ease the third edge of the adjacent tile away from the tile that is to be replaced. Use the mallet on this tile to separate the last edge if necessary.



3. Remove the tile.



4. Slide the replacement tile ('male' connectors first) under the adjacent tiles until it is loosely but correctly in position and aligned with the adjacent tiles.



5. Starting with the "female" connecting edge, use the mallet to hammer the adjacent tile edge into place. Continue clockwise to make the connection with the remaining edges of the adjacent tiles. Ensure that any joints of the adjacent tiles that may have been disturbed are also secured.



6. Check all four edges of the replacement tiles making sure that the connections are fully made and flush.



A full installation video which includes the above procedure can be found in the ESD and Cleanroom installation products section (You Tube Guides) of the Forbo Website:

www.forbo-flooring.co.uk/ESDInstallation

Note: tile replacement starts at 5mins 48 secs

If in any doubt contact us:

Forbo Flooring UK Ltd

Tel: **0800 121 4780**

Samples: **0800 731 2369**

Info.flooring.uk@forbo.com

www.forbo-flooring.co.uk



FLOORING SYSTEMS