



TECHNICAL SPECIFICATIONS

Technical specifications

Coral T32 FR meets the requirements of EN 1307

	Total thickness	ISO 1765	Approx. 7 mm
	Wear classification	EN 1307	Class 33
	Roll width		200 cm
	Roll length		Approx roll length 25 lm
	Suitability for castor chairs	EN 985	Castor chair continuous use r=2.8
Colour fastness ratings:			
	Light	EN ISO 105/B02	5
	Rubbing	EN ISO 105/X12	4.5
	Water	EN ISO 105/E01	4.5
Pile material		60% Wool, 30% polyamide, 10% polyester with Zirpro flame retardant	
Construction		Tufted, 1/8" cut-pile	
Backing		TFR™ Flame retardant latex	
Tuft base		Non-woven polyester	
	Total weight	ISO 8543	Approx. 2595 gram/m ²
	Pile thickness	ISO 1766	Approx. 6 mm
Pile weight		1125 gram/m ²	
Pile density		ISO 8543	0.160 gram/cm ³
Number of tufts		ISO 1763	Approx. 104,016/m ²
	Impact sound insulation	EN ISO 717-2	29.6 dB
	Suitability for stairs	EN 1963	Stairs continuous use
	Comfort class	EN 1307	LC3
	Coral T32 marine product meets the demands set by EN 14041		
	Slip resistance	EN 13893	DS
	Electrical resistance	ISO 6356	< 2.0 kV
	Heat transmission resistance	ISO 8302	0.12 m ² K/W
Fire rating:			
IMO Resolution A653(16)		Pass	
IMO Resolution MSC 307(88) Annex 1 Part 2		Pass	
IMO Resolution MSC 307(88) Annex 1 Part 5		Pass	
US Coast Guard approval ref: 164.117/1121/WCL		MED0170	



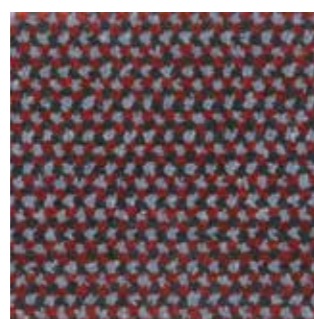
french blue*



steel*



graphite*



ruby



jade



brown

*Stocked items.

Note: ruby/jade and brown references are not stocked but are made to order. Minimum order quantities apply. Please ask your local sales manager for more details.

Final production might vary within commercial tolerances from sample.

Manufacturing specifications subject to normal industry tolerances.

Forbo reserves the right to improve the specification of its products without giving prior notice.

Errors and omissions excepted.



IMO Certificate No. 164.117/1121/WCL MED0170