



Alcatifa em mosaicos

tessera[®] chroma



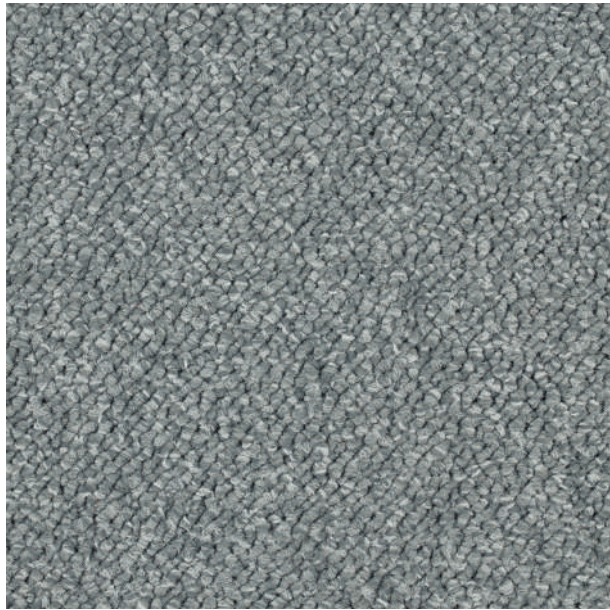
50 x 50 cm

creating better environments

forbo
FLOORING SYSTEMS

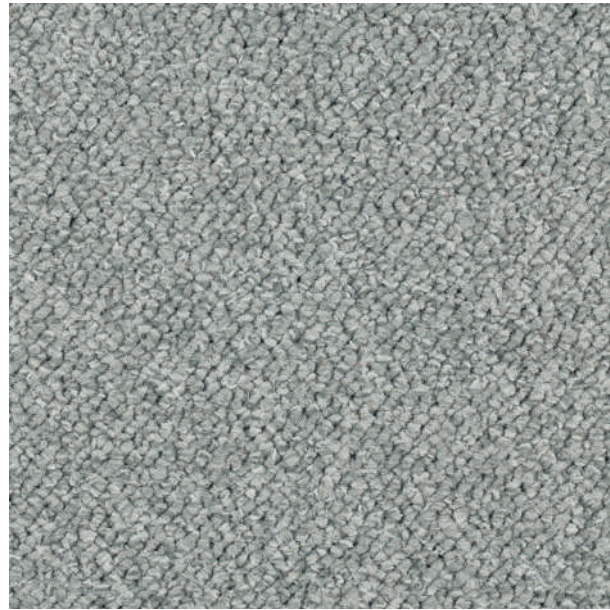






3600 | castle

LRV 19



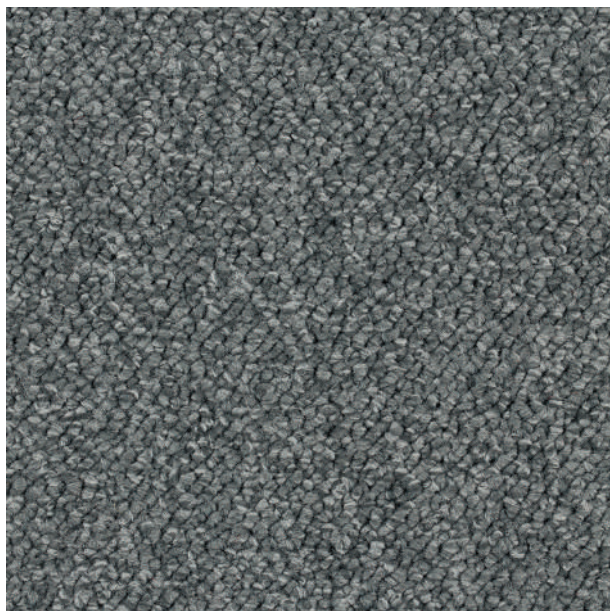
3601 | platinum

LRV 27



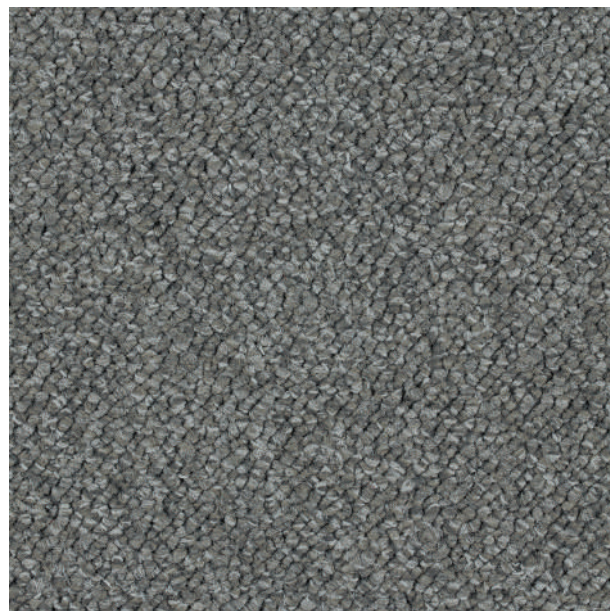
3602 | chanterelle

LRV 22



3603 | asphalt

LRV 14



3604 | elephant

LRV 13



3605 | pathway

LRV 13



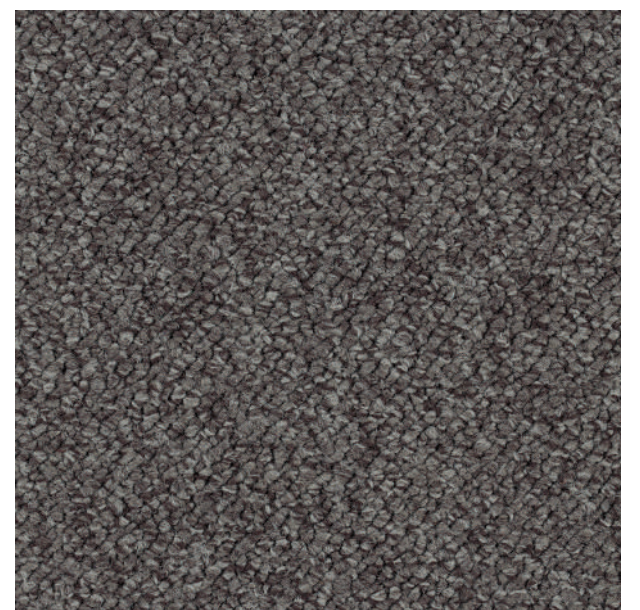
3606 | tuxedo

LRV 6



3607 | mineral

LRV 10



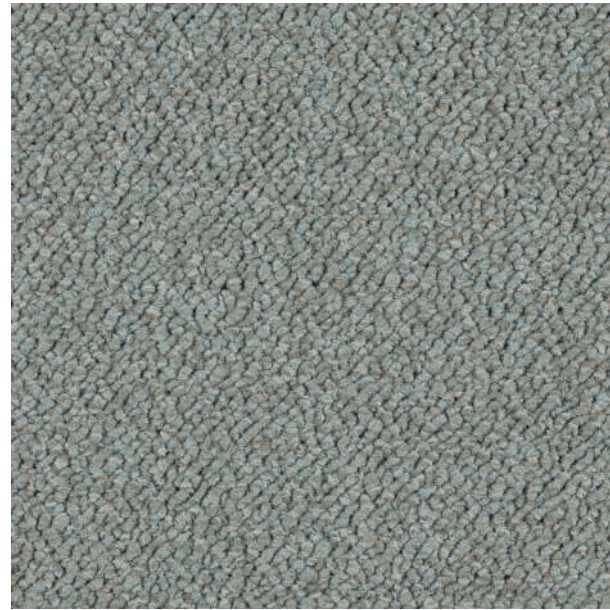
3608 | quinoa

LRV 9



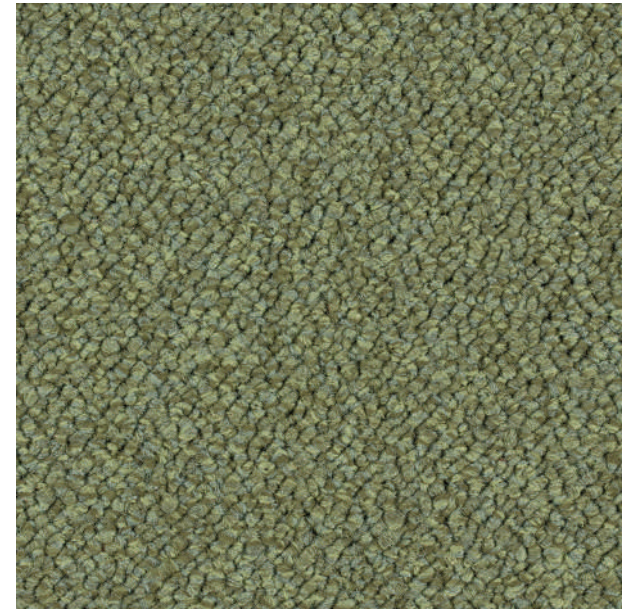
3609 | coconut

LRV 30



3612 | estuary

LRV 19



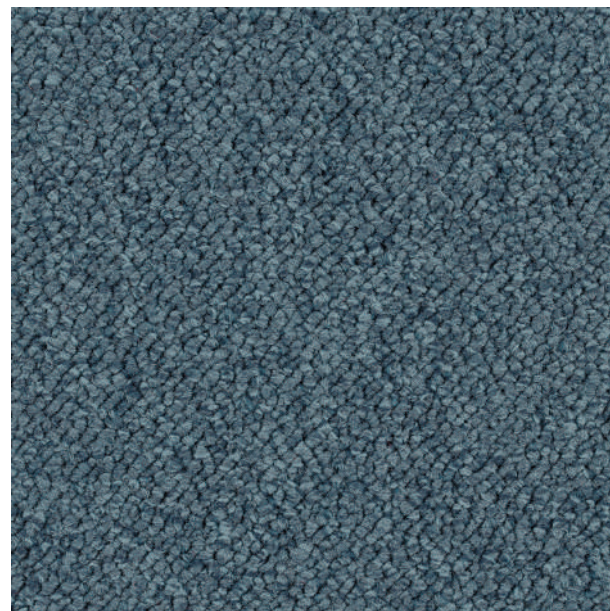
3613 | pasture

LRV 13



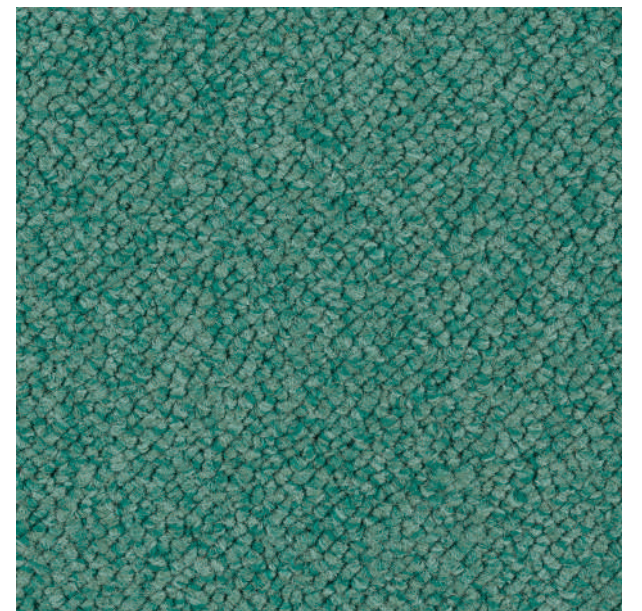
3610 | thatch

LRV 17



3615 | nautical

LRV 10



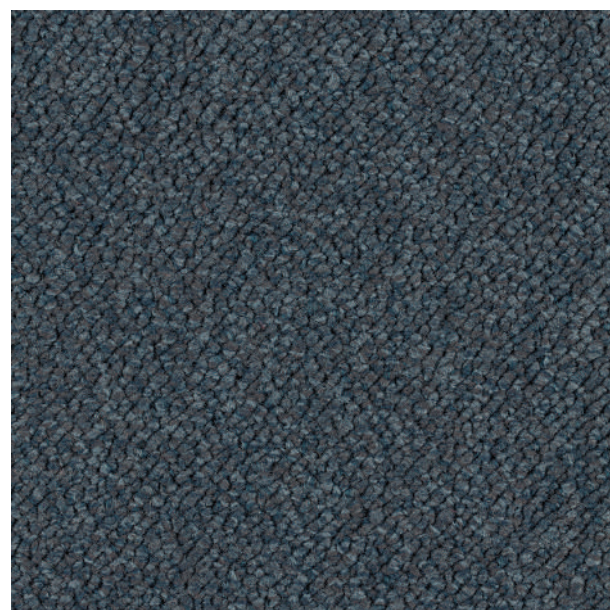
3616 | eucalyptus

LRV 16



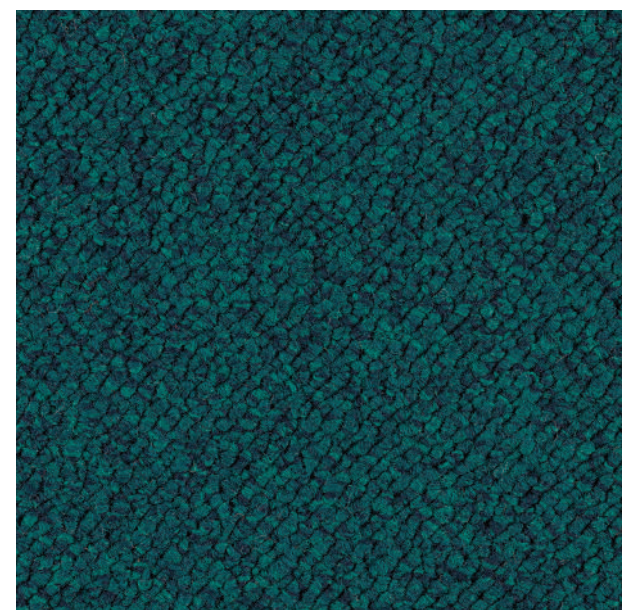
3611 | treacle

LRV 8



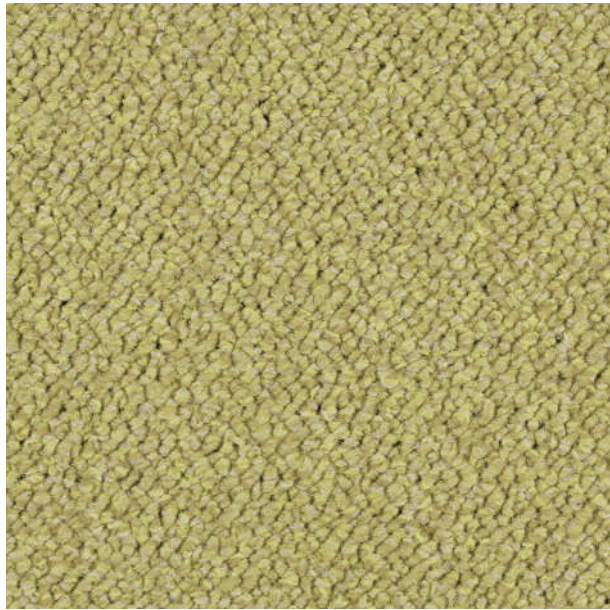
3618 | torrent

LRV 7



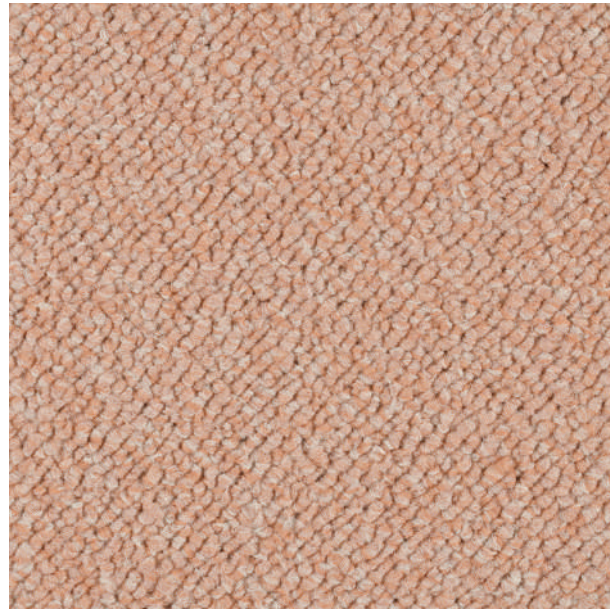
3619 | jungle

LRV 7



3614 | submarine

LRV 26



3621 | camisole

LRV 29



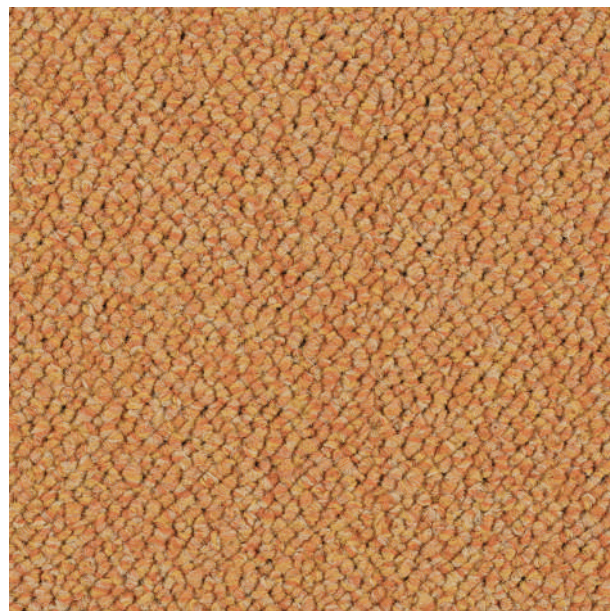
3622 | wisteria

LRV 19



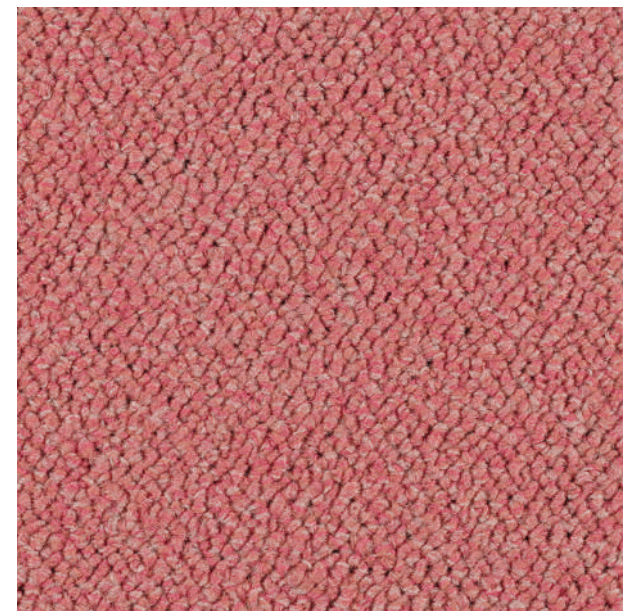
3617 | botanical

LRV 21



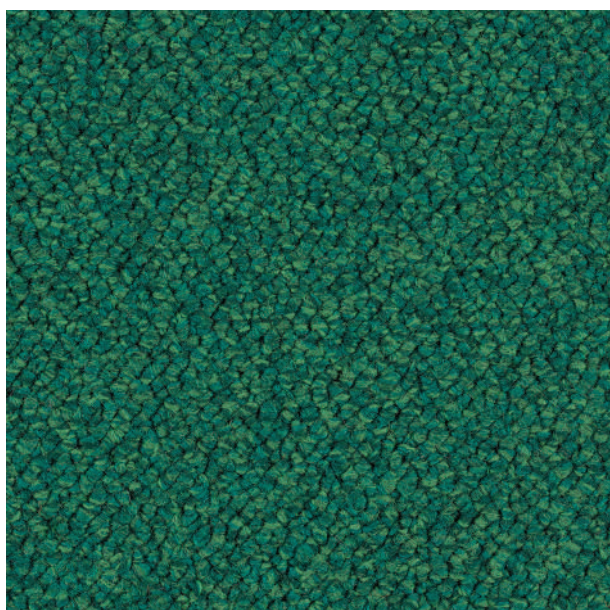
3623 | tangerine

LRV 20



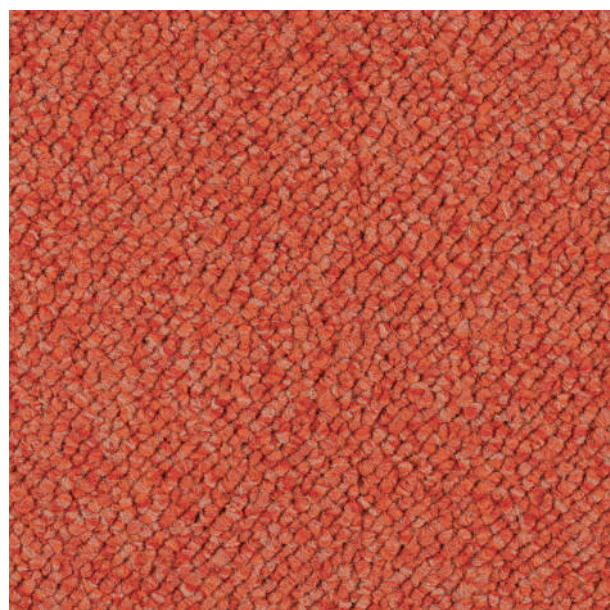
3624 | blossom

LRV 17



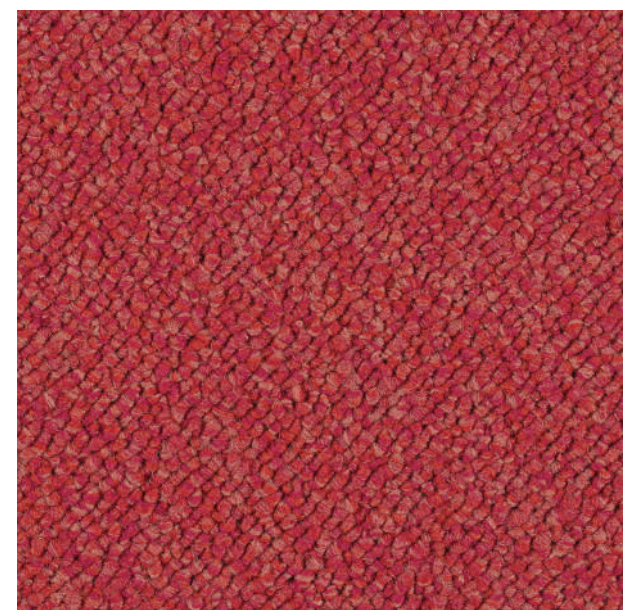
3620 | evergreen

LRV 9



3625 | calypso

LRV 13
























3626 | cardinal

LRV 10



Especificações técnicas

Os mosaicos de alcatifa Chroma cumprem os requisitos da norma EN 1307

	Descrição	Alcatifa em Mosaicos Tufted texturizada com laço
	Descrição	50cm x 50cm
	Espessura total	6.4mm ± 10%
	Altura do pêlo	3.5mm ± 0.5mm
	Tamanho da coleção	27 cores. 4m2 por caixa
	Utilização comercial	EN 1307 Classe 33, adequado para qualquer tipo de aplicação de contrato pesado
	Composição do pêlo	100% poliamida 6 Aquafil
	Método de coloração	100% tingido em solução
	Densidade dos pontos	94,464 por m ² ± 10%
	Peso do pêlo	750gsm ± 10%
	Peso total	4,065gsm ± 10%
	Base primária	Poliéster
	Base secundária	Enchimento mineral reciclado ProBac com baixa quantidade de betume modificado e velo de poliéster. Contém mais de 76% de conteúdo reciclado Também disponível com suporte secundário SOFTbac
	Cadeira de rodizio de uso contínuo	EN 985 Valor R mínimo: ≥ 2,4
	Solidez da cor à luz	EN ISO 105-B02 ≥ 5
	Base secundária	EN 986 ≤ 0.2 %
	Redução do ruído de impacto acústico	ISO 10140-3 ΔL _w = 26 dB
	Creating Better Environments	
	Eletricidade renovável	Todos os mosaicos de alcatifa Tessera são fabricados utilizando 100% de energia renovável (eletricidade e biogás)
	Conteúdo reciclado	Os mosaicos de alcatifa Chroma contêm 62% de conteúdo reciclado por peso
	Qualidade do ar interior	Os mosaicos de alcatifa Chroma cumprem a norma 01350 relativa à qualidade do ar interior
	Back to the Floor	Os cortes de instalação podem ser recolhidos através do Back to the Floor
	Classificação Ska	O Chroma cumpre os critérios da Ska Rating para pavimentos macios M12 em projectos de escritórios, retalho e ensino superior
	Garantia	Os mosaicos de alcatifa Chroma têm uma garantia de 10 anos em condições de contrato pesado (15 anos de garantia com SOFTbac*), desde que tenham sido montados profissionalmente por um empreiteiro reconhecido e tenham sido objeto de manutenção regular de acordo com os requisitos Forbo atualmente em vigor.
	Installation method	Monolítico, de um quarto de volta ou em mosaico
	Os mosaicos de alcatifa Chroma cumprem os requisitos da norma EN 14041	 EN 14041
	Reação ao fogo	EN 13501-1 B _{f1} -s1
	Resistência ao deslizamento	EN 13893 μ ≥ 0.30
	Acumulação de cargas eletrostáticas	EN1815 < 2 kV

All Forbo Flooring Systems' sales organisations and manufacturing sites worldwide have certified Quality Management Systems in accordance with ISO 9001.

All Forbo Flooring Systems' manufacturing plants have certified Environmental Management Systems in accordance with ISO 14001.

Tessera Chroma carpet tiles are manufactured in a facility certified to SA8000® and OHSAS 18001.

Chroma is currently under assessment for the BREEAM building rating scheme.

Colourway choice

As with any product, colour and design influence the appearance retention of the floor.

The level and type of traffic should be considered as part of the process for selecting colourways. Light colours may not be suitable for heavy traffic areas.

Installation and maintenance

All Tessera products are to be installed in full accordance with Forbo installation instructions and recognised trade standards.

Our recommended adhesive for our collection of Tessera carpet tiles is 542 Eurofix Tack Plus.

A well designed entrance flooring system will prevent dirt and moisture from being tracked into the building, prolonging the life of the carpet tiles, reducing cleaning, repair and overall maintenance costs. **Forbo Coral and Nuway entrance systems** are independently proven to remove and retain up to 95% of all dirt and moisture entering a building. Please contact customer services for more information.

Regular vacuuming is essential (using a high suction power driven brush vacuum). Spills and surface stains can be removed by sponging with a damp cloth or, for more resistant stains, with a mild detergent solution. For full installation and cleaning and maintenance instructions please go to www.forbo-flooring.co.uk

Whilst Forbo Flooring UK Limited does its best to ensure that the contents of this samplebook are correct and accurate at the time of publication, to the fullest extent permitted by law, Forbo Flooring UK Limited makes no, and expressly disclaims all, guarantees of any kind, expressed or implied in respect of the information, content, materials or products displayed in this samplebook and does not represent that the information is accurate, complete or current and you are advised to visit our website at www.forbo-flooring.co.uk for up-to-date details or corrections to such contents.

Forbo Revestimentos

Forbo Revestimentos, SA
Z.I.Maia I, Setor VII
Trv. Eng. Nobre da Costa,87
4476-908 Maia

Telephone: +351 229 996 900

Fax: +351 229 996 909

email: info.revestimentos@forbo.com

Find us on



FLOORING SYSTEMS

creating better environments