

The invisible dove tail construction of Allura Colour Plus ensures a strong and stable connection which can withstand high traffic and intensity of use. A moisture control system prevents buildup of mold and bacteria, keeping the subfloor dry in cases where high spillage of fluids occurs. Allura Colour Plus tiles can be welded for high spillage areas.

## Technical specifications

Allura Colour and Allura Colour Plus meet the requirements of EN-ISO 10581 - Type 1



		Allura Colour	Allura Colour Plus
	Total thickness	EN-ISO 24346	2.0 mm
	Collection size		14
	Commercial use	EN-ISO 10874	34, very heavy
	Industrial use	EN-ISO 10874	43, heavy
	Tile size	EN-ISO 24342	610 x 610 mm
	Total weight	EN-ISO 23997	3.1 kg/m <sup>2</sup>
	Dimensional stability	EN-ISO 23999	≤ 0,05 %
	Residual indentation	EN-ISO 24343-1	≤ 0,04 mm
	Castor chair continuous use	ISO 4918/EN 425	excellent
	Impact sound reduction	EN-ISO 717-2	≥ 12 dB
	Light fastness	EN-ISO 105-B02	≥ 6
	Resistance to chemicals	EN-ISO 26987	excellent
	VOC emissions	AgBB / DIBT	suitable for indoor applications
	Total VOC 28 days	ISO 16000-9	< 10 µg/m <sup>3</sup>
	Slip resistance	DIN 51130	R9
		EN 14041	EN 14041
		CE	CE
		0201070_DoP_306	0201070_DoP_306
Allura Colour and Allura Colour Plus meet the requirements of EN 14041			
	Reaction to fire	EN 13501-1	B <sub>n</sub> -s1
	Slip resistance	EN 13893	DS: ≥ 0,30
	Thermal conductivity	EN-ISO 10456	0.25 W/(m.K)
	Body voltage	EN 1815	≤ 2.0 kV

The above information is subject to modifications for the benefit of further improvements

All Forbo Flooring Systems' sales organisations worldwide have a certified Quality Management System in accordance with ISO 9001. All Forbo Flooring Systems' manufacturing operations have a certified Environmental Management System in accordance with ISO 14001. The Life Cycle Assessment (LCA) of Forbo Flooring Systems' products is documented in individual Environmental Product Declarations (EPD's) which can be found on all of our websites.



Find us on



Forbo Flooring B.V.  
P.O. Box 13  
1560 AA Krommenie  
The Netherlands

Tel.: +31 75 647 74 77  
Fax: +31 75 647 77 01  
E-mail: [contact@forbo.com](mailto:contact@forbo.com)  
[www.forbo-flooring.com](http://www.forbo-flooring.com)



FLOORING SYSTEMS

creating better environments



high density glue down and interlocking loose lay tiles

**allura**  
colour | colour plus

creating better environments



FLOORING SYSTEMS

203324/01 2018





# allura

colour | colour plus

Allura Colour Plus, a high quality, rapid and permanent flooring solution for demanding environments, ready to use after installation.

The high density pressed interlocking vinyl tiles of Allura Colour Plus are made with Forbo's proven Colorex technology of pressed vinyl tiles mounted on an invisible, strong and durable interlocking system.

Allura Colour Plus tiles are also available as a glued down solution for high traffic areas. A PUR finish protects the surface and a balanced range of colours make the range suitable for a wide range of applications.

C68014 | cafe au lait

## RAPID LOOSE LAY OR GLUE DOWN FLOORING SOLUTIONS WITH A TOUCH OF CLASS

- Made by Forbo with proven Colorex technology
- High quality, high density pressed tiles
- Balanced range of colours for multiple applications
- Suitable for wheeled traffic and heavy loads
- Available as interlocking and glue down version

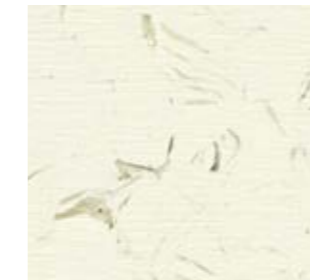
### For Plus:

- Superior locking strength
- Integrated invisible locking system
- Quick installation while business continuous
- Integrated moisture management system
- Ideally suited for renovation projects directly covering ceramic or resin floors
- Quick installation of up to 20m<sup>2</sup> per hour



**COMMITTED TO THE HEALTH OF ONE**  
WWW.FORBO-FLOORING.CO.UK/CHO

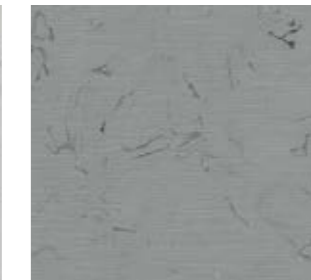
At Forbo Flooring Systems we aim to create better indoor environments. Floors that are safe, hygienic and comfortable contribute to the health of the individual. Allura Colour is easy to install, avoids debris and dust during installation and results in a durable hygienic flooring solution that is easy to maintain.



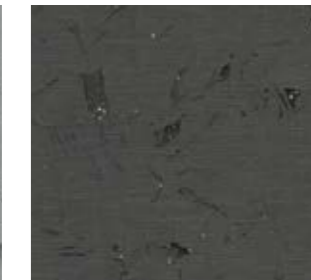
C68011 | chalk  
Allura colour plus 651011 LRV 84%



C68037 | cloud  
Allura colour plus 651037 LRV 52%



C68038 | neutral grey  
Allura colour plus 651038 LRV 25%



C68026 | cool grey  
Allura colour plus 651026 LRV 10%



C68019 | light grey  
Allura colour plus 651019 LRV 48%



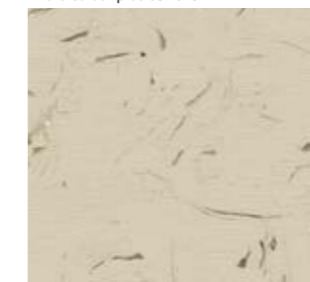
C68013 | cement  
Allura colour plus 651013 LRV 27%



C68015 | dark lead  
Allura colour plus 651015 LRV 15%



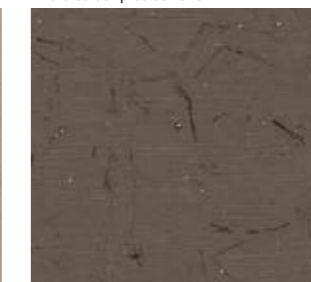
C68036 | charcoal  
Allura colour plus 651036 LRV 5%



C68012 | pearl grey  
Allura colour plus 651012 LRV 52%



C68014 | cafe au lait  
Allura colour plus 651014 LRV 31%



C68018 | faded brown  
Allura colour plus 651018 LRV 12%



C68039 | ruby red  
Allura colour plus 651039 LRV 9%



C68040 | petrol green  
Allura colour plus 651040 LRV 10%



C68035 | marine blue  
Allura colour plus 651035 LRV 7%

*Allura Colour creates versatile environments. The subtle tone-on-tone colour varieties of this collection enable you to design and direct your traffic or to highlight certain areas in your space.*