

# TRANSPORT FLOORING FOR RAIL







## Contents

---

- 4 Product range overview
- 6-13 Entrance Flooring Systems
- 14-19 Resilient Floor Coverings
- 20-41 Textile Floor Coverings
- 42 Service Products & Accessories
- 43 Contact us

## Creating better rail environments across the world

---

Forbo has developed a truly comprehensive and compliant flooring product offer for the global rail sector. Whether you are sourcing floor coverings for high speed, intercity, regional or light rail carriages, or for trams or metro vehicles, we can provide you with an exceptional range of products to meet the necessary requirements.

Within our portfolio you will find high performance entrance systems, linoleum flooring, textile carpets and flocked floor coverings, and the widest range of design and colourways on the market, giving you a world of choice. We also supply all the necessary adhesives, accessories and specialist tools your installation team might need.

We are very experienced in material scheduling and meeting individual logistical challenges, both for new build and refurbishment programmes. We will work closely with you to understand your exact requirements, in order to achieve the optimum service level.

If you are looking for a totally unique flooring solution, your Forbo Account Manager will work directly with our experienced and talented in-house design team to deliver bespoke floor covering designs that are guaranteed to give your rail interiors a truly individual look.

### **Working with Forbo means;**

- *A sole source of supply for all your flooring requirements*
- *The largest and most versatile choice of floorcoverings*
- *A custom design service*
- *Global advice, support and cross border project management*

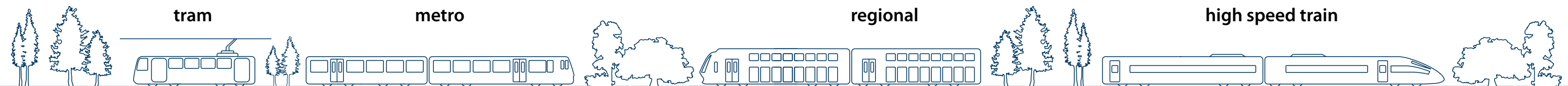
You can rely on Forbo to deliver an exceptional total flooring solution for your rail project.



# The widest portfolio of floor coverings for rail



Floor coverings for rail:



## Entrance Systems

### **coral**<sup>®</sup> FR

**Key benefits:**

Dirt removal, moisture absorption,  
soil hiding

**coral**<sup>®</sup> classic FR

**coral**<sup>®</sup> duo FR

**coral**<sup>®</sup> brush blend FR

**coral**<sup>®</sup> brush pure FR

## Resilients

### **marmoleum**<sup>®</sup> FR

**Key benefits:**

Natural, sustainable, scuff resistant,  
easy to clean

**marmoleum**<sup>®</sup> real FR

**marmoleum**<sup>®</sup> striato FR

## Textiles

### **tessera**<sup>®</sup> FR

**Key benefits:**

Warm, comfortable, slip resistant,  
good acoustic properties

**tessera**<sup>®</sup> alignment FR

**tessera**<sup>®</sup> helix FR

### **flotex**<sup>®</sup> FR

**Key benefits:**

Easy to clean, extensive custom  
design capabilities, high durability

**flotex**<sup>®</sup> colour FR

**flotex**<sup>®</sup> vision FR

### **coral**<sup>®</sup> move FR

**Key benefits:**

Extensive design capabilities,  
moisture absorption, warm,  
comfortable, high durability





**coral®** FR

Entrance systems that prevent over half of the dirt and moisture being tracked through a rail vehicle

## coral® FR

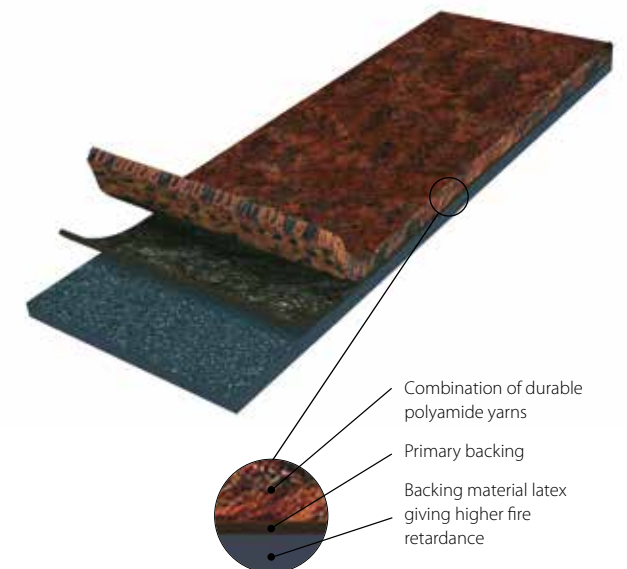
First impressions are crucial, which is why effective entrance flooring that stops dirt and moisture being tracked into carriages and saloon areas is fundamental to modern train design.

By removing wet and dry soiling from the soles of shoes and wheel treads, an effective entrance system reduces premature wear and tear to interior floor coverings, minimises cleaning and maintenance costs and protects passengers by reducing slip hazards.

### Benefits:

- High moisture absorption
- Dirt scraping for effective clean-off
- High dirt storage
- Advanced colouring and design choice
- Excellent soil hiding properties
- Reaction to fire EN 45545 : HL2

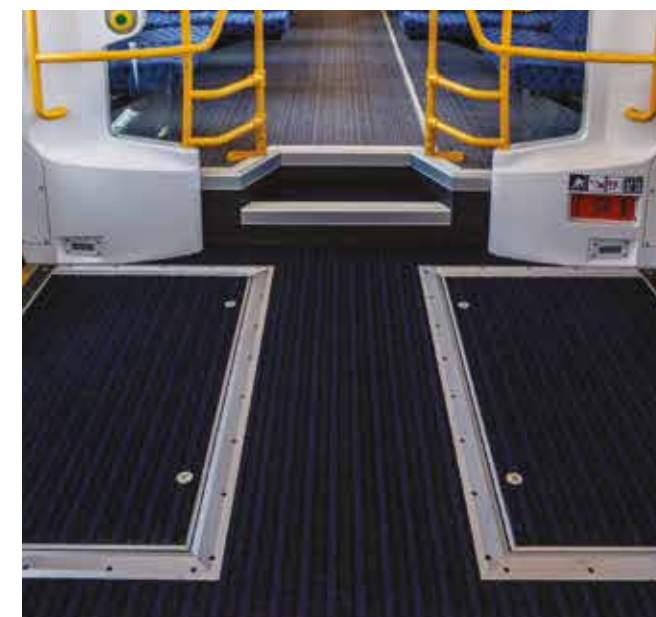
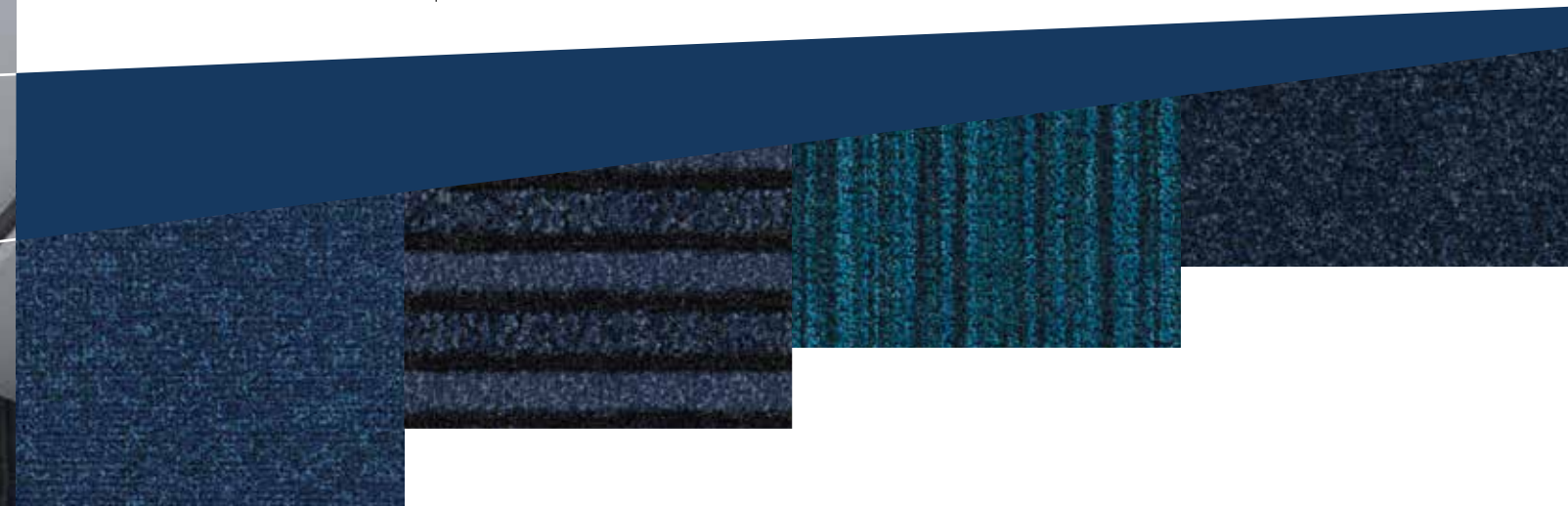
Providing the ideal solution for rail vehicle entrances, Coral entrance flooring is available in three different formats: Classic, Brush and Duo – each with their own unique benefits.



Combination of durable polyamide yarns

Primary backing

Backing material latex giving higher fire retardance





# coral<sup>®</sup> classic FR

The ultimate moisture absorbing clean-off system.

Coral Classic is available in 12 colours



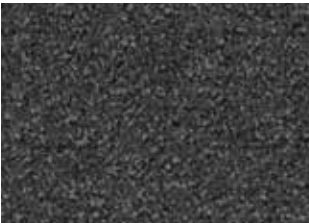
4750 | warm black



4730 | raven black



4701 | anthracite



4721 | mouse grey



4751 | silver grey



4752 | azure



4727 | navy blue



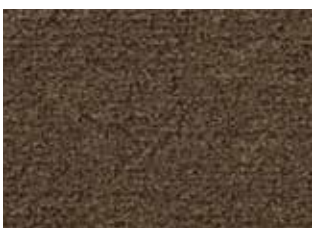
4764 | taupe



4756 | bronzetone



4744 | espresso



4766 | spice brown



4754 | ocher

All Coral FR material is made to order.

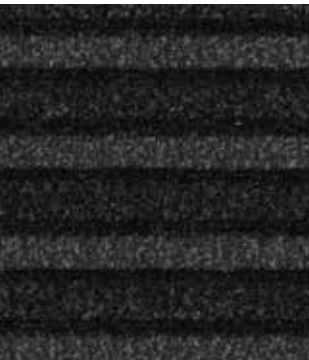
# coral<sup>®</sup> duo FR

For unbeatable soil removal, especially in compact areas.

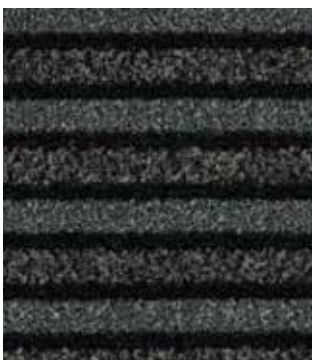
Coral Duo is available in 8 colours



9729 | wiltshire red



9730 | black diamond



9721 | dark steel



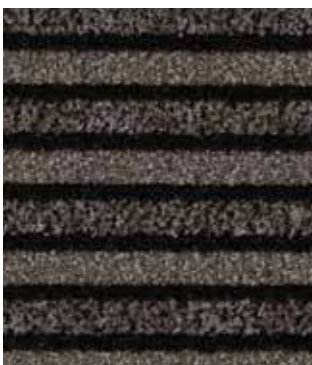
9727 | volga blue



9725 | cafe bahia



9716 | imperial gold



9714 | sicilian sand



9710 | luna pearl

All Coral FR material is made to order.



# coral<sup>®</sup> brush blend FR

Unique design with exceptional performance.

Coral Brush Blend is available in 9 colours



5750 | aztec black



5741 | cannon grey



5745 | woodsmoke grey



5747 | zodiac blue



5742 | atoll blue



5748 | pesto green



5749 | voodoo purple



5766 | cognac brown



5744 | coir brown

All Coral FR material is made to order.

# coral<sup>®</sup> brush pure FR

A complete all-rounder that removes both moisture and dirt.

Coral Brush Pure is available in 12 colours



5730 | vulcan black



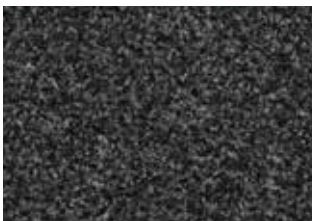
5710 | asphalt grey



5715 | charcoal grey



5720 | gondola black



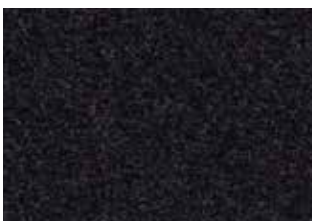
5721 | hurricane grey



5714 | shark grey



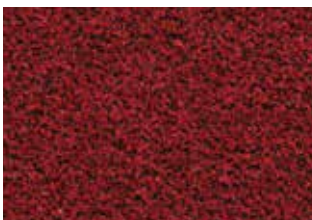
5727 | stratos blue



5719 | bossanova purple



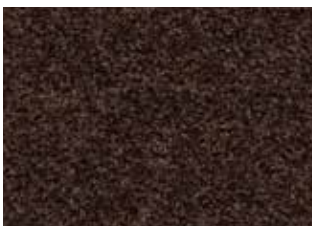
5729 | sangria red



5723 | cardinal red



5726 | jambalaya brown




5724 | chocolate brown

All Coral FR material is made to order.





Recolour  
certain designs with















Coral

**coral<sup>®</sup>** FR

If you cannot see the exact colourway that you are looking for in any of our Coral FR entrance system collections, please speak to us and we will work closely with you in order to match your specific colour requirements.

# TECHNICAL SPECIFICATIONS

Technical specifications		Coral brush pure/blend FR	Coral classic FR	Coral duo FR	
Coral meets the requirements of EN 1307					
	Total thickness	ISO 1765	9 mm	8.5 mm	9 mm
	Roll width	EN-ISO 24341	185 cm (customizable)	185 cm (customizable)	185 cm (customizable)
	Roll length	EN-ISO 24341	27.5 m (customizable)	27.5 m (customizable)	27.5 m (customizable)
	Minimum order quantity		50 m²	50 m²	50 m²
	Total weight	ISO 8543	3400 gram/m²	3400 gram/m²	3000 gram/m²
	Pile installation weight	ISO 8543	920 gram/m²	900 gram/m²	670 gram/m²
	Pile thickness	ISO 1766	6.0 mm	6.0 mm	6.0 mm
	Pile material		100% regenerated Econyl polyamide	100% polyamide-BCF solution dyed	100% polyamide of which 66% is regenerated Econyl polyamide
	Light fastness	EN-ISO 105/B02	4-5	7-8	4-5
	Electrical resistance	ISO 10965	> 10 <sup>9</sup> Ω	> 10 <sup>9</sup> Ω	> 10 <sup>9</sup> Ω
	Contact sound insulation	EN-ISO 717-2	Δ Lw = approx 32 dB	Δ Lw = approx 31 dB	
	Tested flammability standards	EN 45545-2	HL2	HL2	HL2
		BS6853	1b	1b	
		DIN 5510-2		SF 1-3	
		ASTM E.648 ASTM E.662	Class 1 pass	Class 1 pass	Class 1 pass
		NF P 92-501 NF F 16-101	M3 F1	M2 F1	M3 F1
Coral meets the requirements of EN 14041					
	Fire behaviour	EN 13501-1	B <sub>FL</sub> -s1	B <sub>FL</sub> -s1	B <sub>FL</sub> -s1
	Slip resistance	EN 13893	DS: ≥ 0.30	DS: ≥ 0.30	DS: ≥ 0.30
	Body voltage	ISO 6356	< 2 kV	< 2 kV	< 2 kV
	Thermal conductivity	EN 12524	0.093 m² K/W	0.13 m² K/W	0.140 m² K/W

Coral FR is made to order





# marmoleum® FR

The most sustainable  
resilient floor covering

## marmoleum® FR

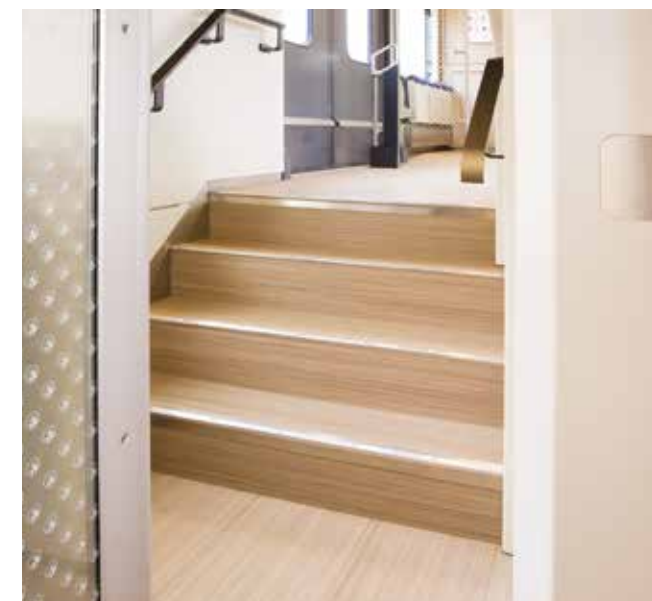
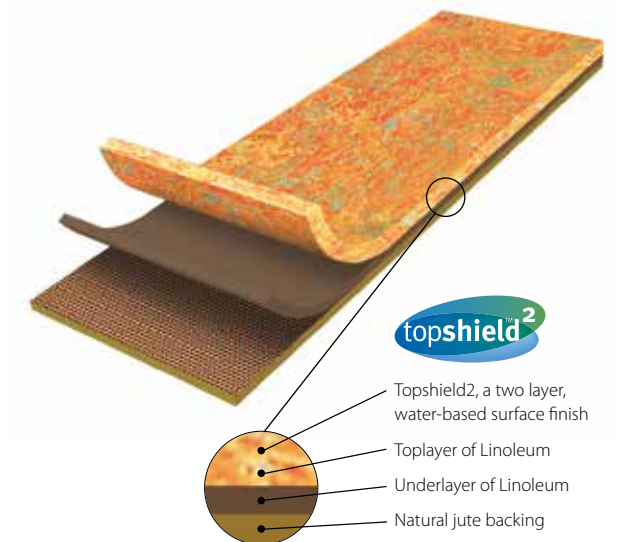
Marmoleum has a history and heritage that stretches back over 150 years and this totally natural floor covering has always been renowned for its sustainability, durability and high quality.

For the rail sector Marmoleum FR offers total versatility in terms of colour and design, but what makes this floor covering really stand out is the fact that it is created using a high percentage of natural raw materials, with renewable and recycled content.

All Marmoleum FR floors include Topshield2, a double layer, UV-cured finish that is scratch and scuff resistant, easy to maintain and ensures long lasting appearance retention. With its natural bacteriostatic properties and resistance to chemicals, Marmoleum FR is the ideal solution for heavy traffic rail vehicles.

### Benefits:

- Homogeneous durable construction
- Low life cycle costs – can be renovated and repaired
- Resistance to cigarette burns
- Wide range of colourways per design
- Reaction to fire EN 45545 : HL2 / HL3

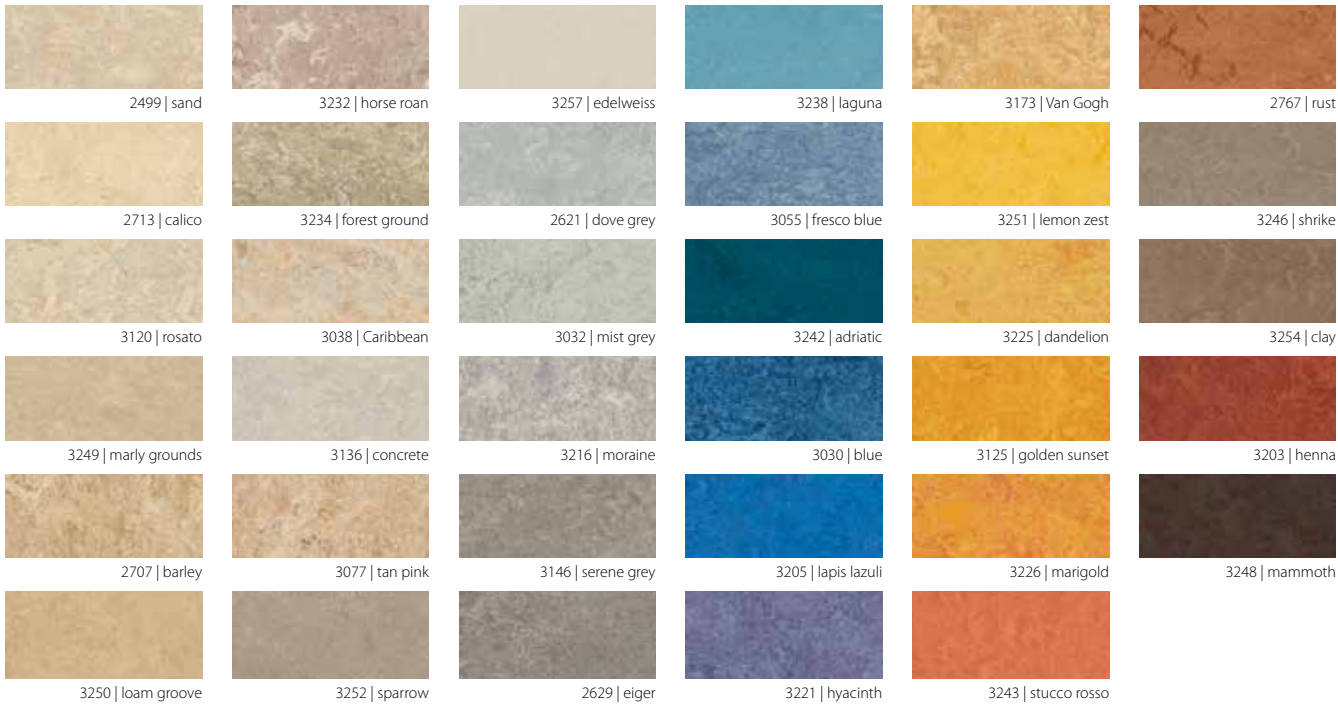




# marmoleum® real FR

Combining sustainability and durability with high quality and innovative interiors.

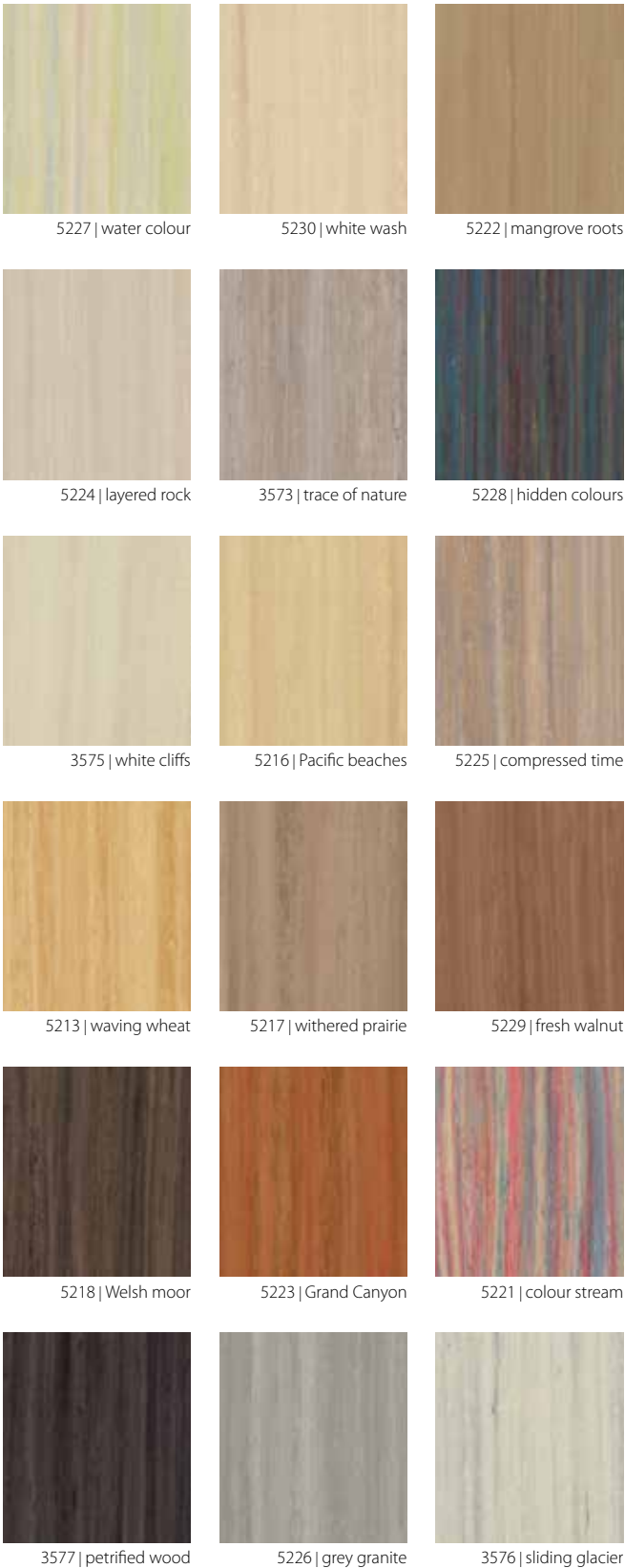
Marmoleum FR available in 59 colours



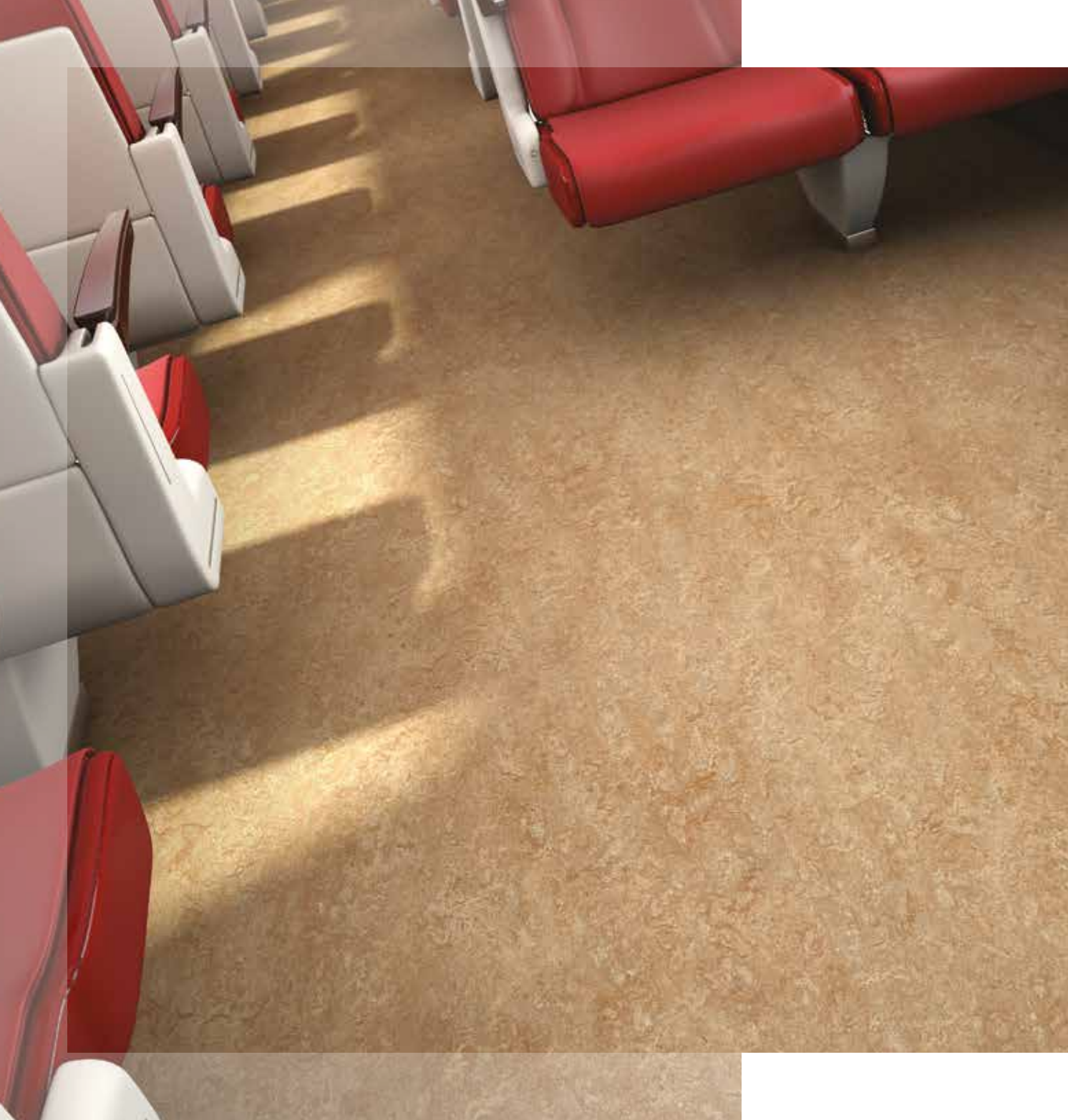
# marmoleum® striato FR

Offering a distinctive directional design, complemented by natural interiors.

Marmoleum Striato available in 18 colours








Recolour  
certain designs with

Marmoleum

marmoleum<sup>®</sup> FR

If you cannot see the exact colourway that you are looking for, please speak to us and we will work closely with you in order to match your specific requirements.

TECHNICAL SPECIFICATIONS

Technical specifications			
Marmoleum meets the requirements of EN ISO 24011		Marmoleum real FR	Marmoleum striato FR
Total thickness	EN-ISO 24346	2.5 mm	2.5 mm
Roll width	EN-ISO 24341	200 cm	200 cm
Roll length	EN-ISO 24341	≤ 32 m	≤ 32 m
Minimum order quantity		3000 m²	3000 m²
Total weight	EN-ISO 23997	2900 gram/m²	2900 gram/m²
Residual indentation	EN-ISO 24343-1	≤ 0.15 mm	≤ 0.15 mm
Light fastness	EN-ISO 105/B02	≥ 6	≥ 6
Flexibility	EN-ISO 24344	Ø 40 mm	Ø 40 mm
Resistance to chemicals	EN-ISO 26987	Resistant to diluted acids, oils, fats and to the conventional solvents. Not resistant to prolonged exposure to alkalis.	Resistant to diluted acids, oils, fats and to the conventional solvents. Not resistant to prolonged exposure to alkalis.
Electrical resistance	EN 1081	1·10 <sup>6</sup> <R1<1·10 <sup>8</sup> Ω	1·10 <sup>6</sup> <R1<1·10 <sup>8</sup> Ω
Contact sound insulation	ISO 717-2	Δ Lw = ≥ 5 dB	Δ Lw = ≥ 5 dB
Tested flammability standards	EN 45545-2	HL2	HL3
	BS6853	1a	
	DIN 5510-2	SF 1-3	SF 1-3
	ASTM E.648 ASTM E.662	Class 1 pass	
Marmoleum meets the requirements of EN 14041		 EN 14041	
Fire behaviour	EN 13501-1	B <sub>FL</sub> -s1	B <sub>FL</sub> -s1
Slip resistance	EN 13893	DS: ≥ 0.30	DS: ≥ 0.30
Body voltage	EN 1815	< 2 kV	< 2 kV
Thermal conductivity	EN 12524	0.17 W/m·K	0.17 W/m·K

Marmoleum FR is made to order





# tessera® FR

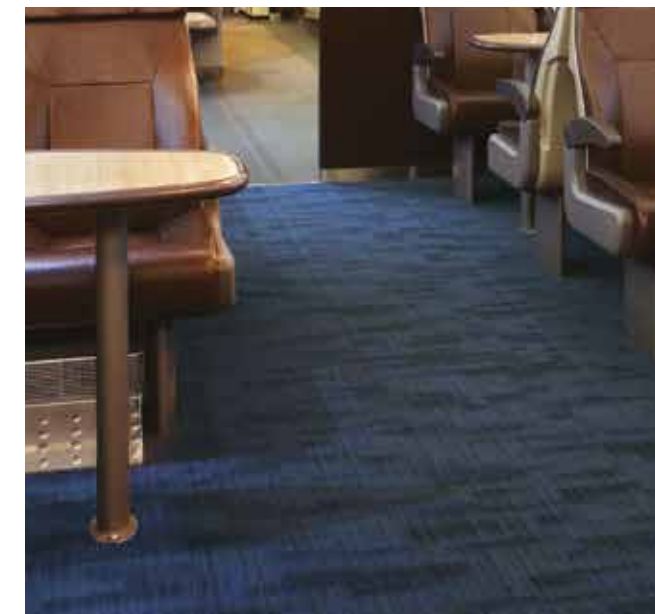
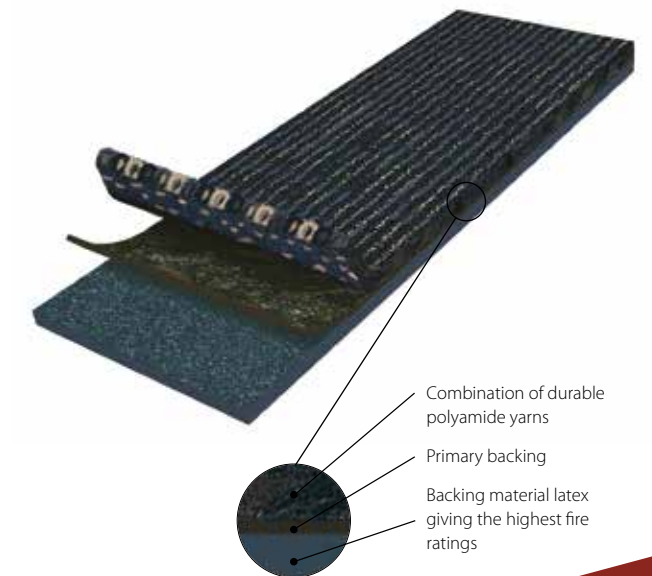
Carpet renowned for its aesthetic styling and outstanding performance in the most demanding environments

## tessera® FR

Tessera FR is a collection of attractive, hardwearing carpets, offered in various pile constructions and textures, all designed to deliver specific aesthetic and performance benefits. The installation of carpet in a rail vehicle adds significant warmth, comfort and acoustic benefits.

### Benefits:

- Durability and appearance retention, made from 100% nylon
- Flexibility for colourisation
- Slip resistance
- Reaction to fire EN 45545 : HL2





# tessera<sup>®</sup> alignment FR

Sophisticated and cleverly textured to complement the most contemporary interior design.

Tessera Alignment available in 24 colours



All Tessera FR material is made to order.

# tessera<sup>®</sup> helix FR

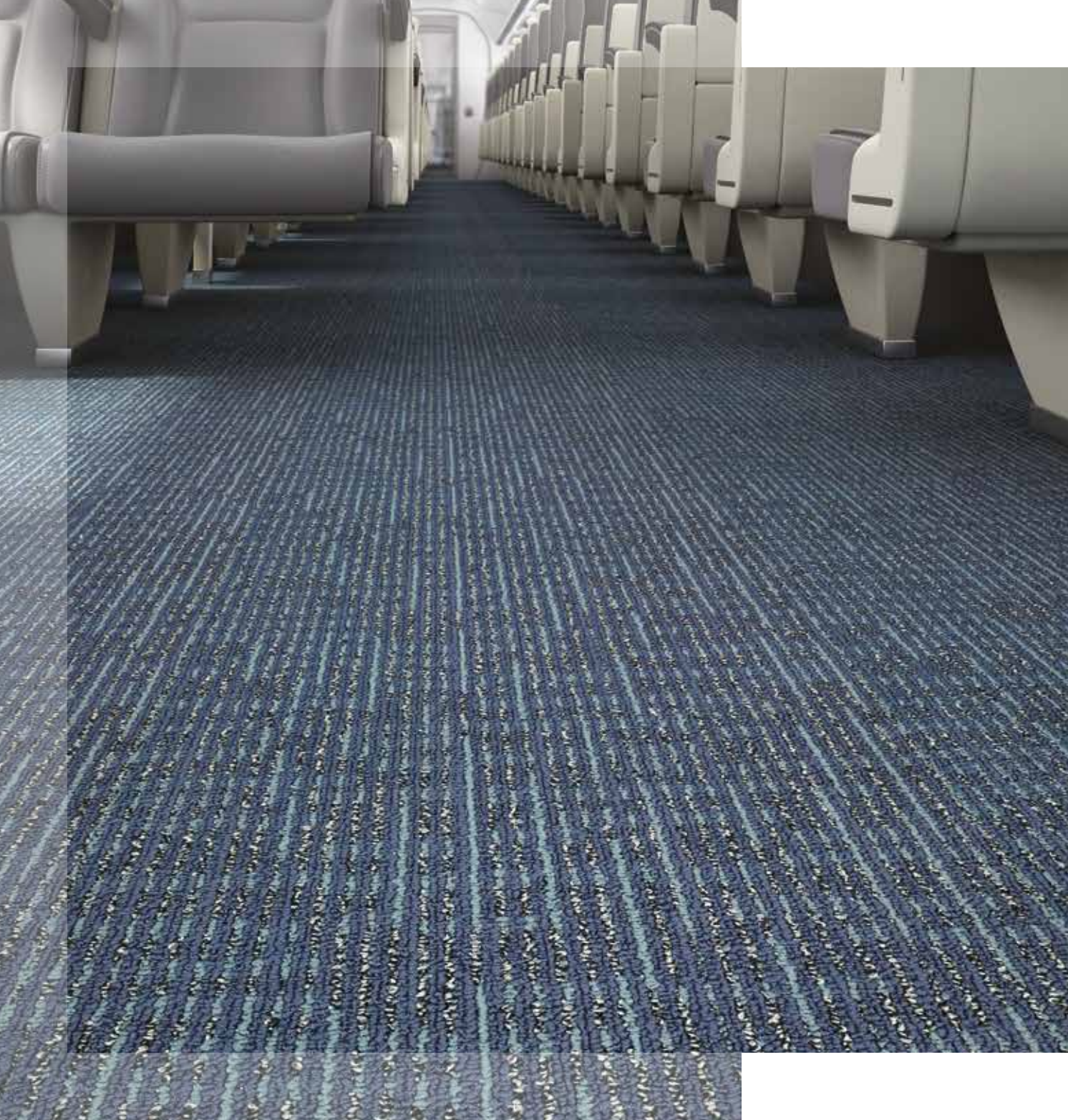
An understated linear design, combining rich texture and visual appeal.

Tessera Helix available in 13 colours



All Tessera FR material is made to order.





Recolour  
certain designs with

Tessera

tessera<sup>®</sup> FR

If you cannot see the exact colourway that you are looking for in any of our Tessera FR designs, please speak to us and we will work with you in order to match your specific requirements.

TECHNICAL SPECIFICATIONS

Technical specifications		Tessera helix FR	Tessera alignment FR
Tessera meets the requirements of EN 1307			
Total thickness	ISO 1765	6 mm	6 mm
Roll width	EN-ISO 24341	185 cm (customizable)	185 cm (customizable)
Roll length	EN-ISO 24341	27.5 m (customizable)	27.5 m (customizable)
Minimum order quantity		Standard range – 50 m <sup>2</sup> Custom colour – 1100 m <sup>2</sup>	Standard range – 50 m <sup>2</sup> Custom colour – 1100 m <sup>2</sup>
Total weight	ISO 8543	3000 gram/m <sup>2</sup>	3000 gram/m <sup>2</sup>
Pile installation weight	ISO 8543	740 gram/m <sup>2</sup>	730 gram/m <sup>2</sup>
Pile thickness	ISO 1766	4 mm	4 mm
Pile material		100% polyamide-BCF	100% polyamide-BCF
Light fastness	EN-ISO 105/B02	7-8	7-8
Electrical resistance	ISO 10965	> 10 <sup>9</sup> Ω	> 10 <sup>9</sup> Ω
Tested flammability standards	EN 45545-2	HL2	HL2
	BS6853	1b	
	DIN 5510-2	SF 1-3	SF 1-3
	ASTM E.648 ASTM E.662	Class 1 pass	Class 1 pass
Tessera meets the requirements of EN 14041			
Fire behaviour	EN 13501-1	B <sub>FL</sub> -s1	B <sub>FL</sub> -s1
Slip resistance	EN 13893	DS: ≥ 0.30	DS: ≥ 0.30
Body voltage	ISO 6356	< 2.5 kV	< 2.5 kV

Tessera FR is made to order







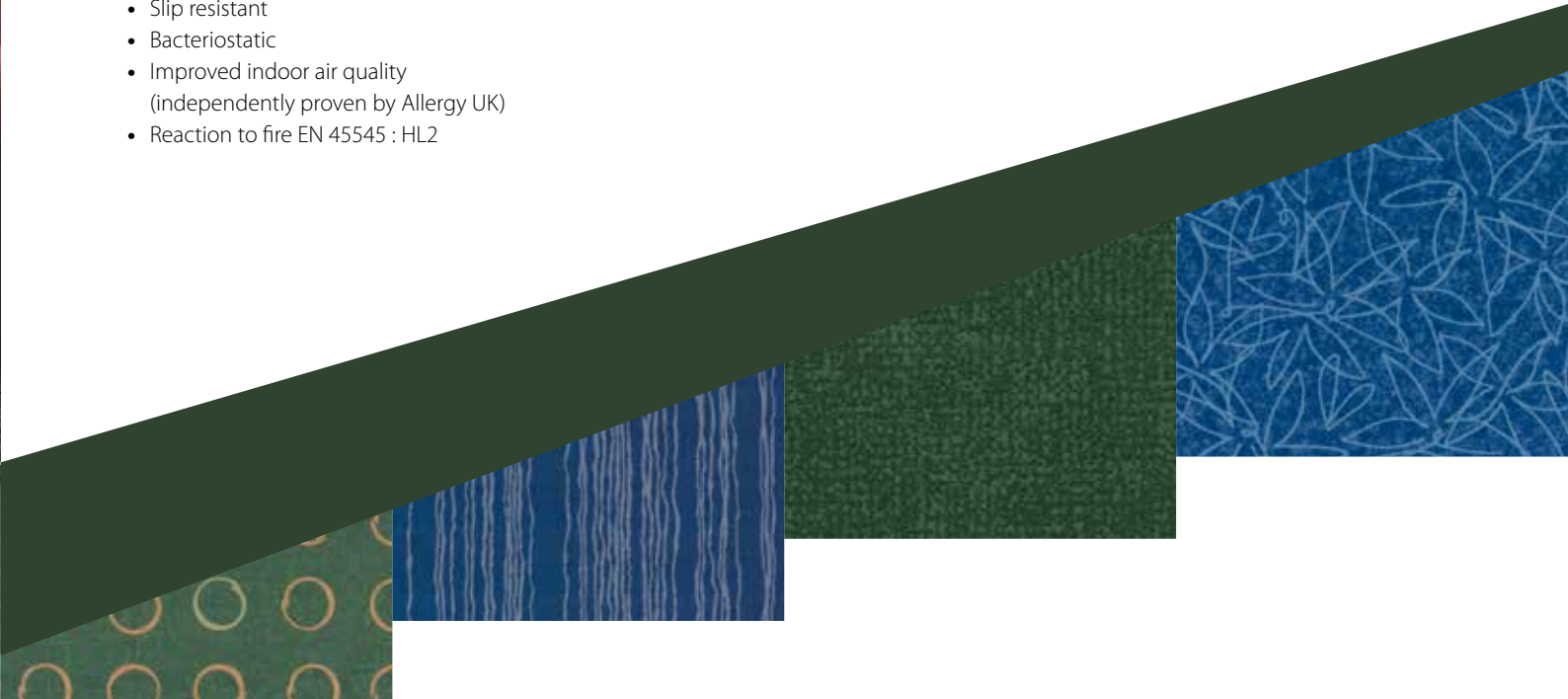
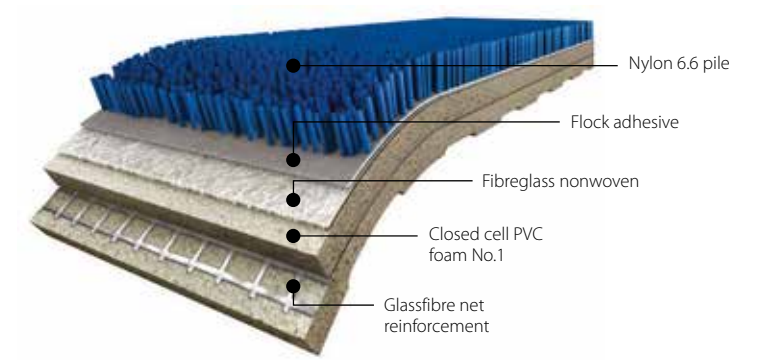
**flotex® FR**  
The only truly  
washable textile

## flotex® FR

Flotex FR is unique, combining the cleaning properties and durability of a resilient flooring with the comfort, slip resistant and acoustic properties usually associated with textiles.

### Benefits

- High durability
- Hygienic
- Easy to clean; easy soil and stain removal due to short nylon fibres
- Slip resistant
- Bacteriostatic
- Improved indoor air quality (independently proven by Allergy UK)
- Reaction to fire EN 45545 : HL2



Flotex's upright fibres enable easy removal of soil and stains





# flotex® colour FR

Flotex Colour is a collection of three designs (Metro, Penang and Calgary) which together form a rhapsody of colour across a broad spectrum.



246010 | Metro chocolate



290020 | Calgary toffee



482014 | Penang copper



246015 | Metro cocoa



482025 | Penang forest



482002 | Penang concrete



482108 | Penang bamboo



290009 | Calgary moss



246008 | Metro anthracite



246024 | Metro carbon



246001 | Metro indigo



482026 | Penang neptune



482116 | Penang azure



246033 | Metro emerald



482020 | Penang shale



246006 | Metro grey



290015 | Calgary azure



246020 | Metro lagoon



482031 | Penang ash



482024 | Penang purple



246023 | Metro horizon



482011 | Penang sapphire



290002 | Calgary grey



482004 | Penang mercury



290022 | Calgary condor



290001 | Calgary sky



482007 | Penang zinc



290025 | Calgary riviera



290021 | Calgary aqua



482044 | Penang gull



290004 | Calgary menthol

# flotex® metro FR

# flotex® penang FR

# flotex® calgary FR



The swatches shown are only a small selection of the colourways available.

Please refer to the Forbo Flooring website in order to see the full colour palette.



246029 | Metro truffle



482015 | Penang beige



290011 | Calgary quartz



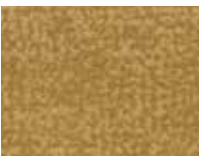
290030 | Calgary spa



246017 | Metro berry



290005 | Calgary melon



246013 | Metro amber



290031 | Calgary cherry



290024 | Calgary fire



290008 | Calgary saffron



246035 | Metro pink



482016 | Penang coral



482022 | Penang amber



246031 | Metro cherry



246025 | Metro tangerine



290006 | Calgary sahara



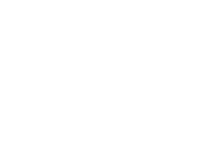
482073 | Penang brick



290028 | Calgary ginger



482006 | Penang sage



482018 | Penang pepper



246012 | Metro sand





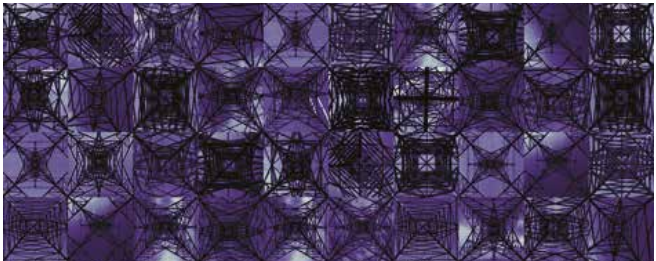
# flotex<sup>®</sup> vision FR

Flotex Vision FR offers an infinite number of design options ranging from abstracts with an intricate colour spectrum to realistic images of natural materials.



## LINES

Line or stripe designs, each with their own characteristics, ranging from muted and sophisticated colourways to very complex and multi-colour patterns.



## PATTERN

Textured, non-directional visuals created through the intricate interplay of networks and patterns.



## NATURALS

This collection offers photorealistic images of natural materials such as wood, stone, ceramics and cork floors. The design technology creates amazingly realistic aesthetics, with the added benefits of improved acoustics, slip resistance and reduced maintenance costs.

With over 500 items to choose from, Flotex Vision is best viewed on Forbo's online digital library which is continuously updated. The designs in Flotex Vision FR fall into six broad categories, each of which represents a different design direction: Floral, Lines, Shape, Pattern, Image and Naturals.



## SHAPE

A collection of organic shapes and motifs delivering beautiful all-over patterns, including both contemporary and traditional designs.



## FLORAL

A selection of floral designs, ranging from abstract, graphic flower motifs to romantic images of roses and butterflies.



## IMAGE

A design category containing a wide variety of photographic images. Grass, sand, water drops, buttons and street maps are just some of the possibilities to be found within this intriguing range.



## Total design freedom

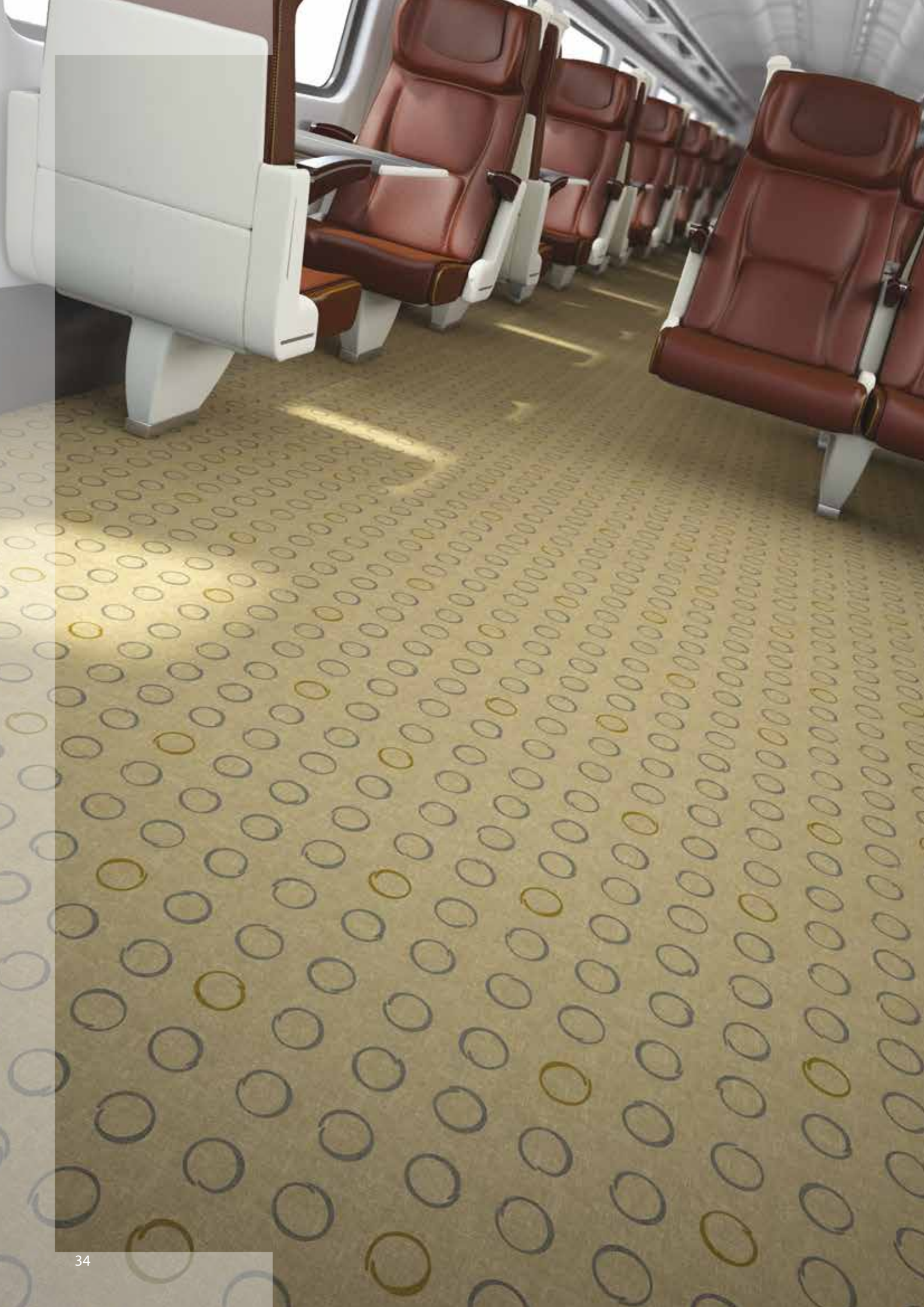
Flotex Vision FR is a collection of high definition digital print designs that create superior textures with almost 3D like appearance. As Flotex Vision FR has 70 million fibres per square per metre, it provides a matt high density substrate for printing, enabling vibrant designs and true-to-life visuals to be produced in high level photographic resolution, providing ultimate design flexibility for rail interiors. All colours, tones and hues are achievable with Flotex Vision FR.

Several of the Flotex Vision designs offer the option to create your own colourway, allowing you to match the floor precisely to your interior design scheme or corporate identity colours. If you have your own vision of what you want on the floor, we also offer a complete bespoke design service on request.



[www.flotexvision.com](http://www.flotexvision.com)





# TECHNICAL SPECIFICATIONS

Technical specifications		Flotex FR Flotex HD FR
Flotex meets the requirements of EN 1307		
Total thickness	ISO 1765	3.3 mm
Roll width	EN-ISO 24341	200 cm
Roll length	EN-ISO 24341	30 m
Minimum order quantity		200 m² / 1000 m² (HD)
Total weight	ISO 8543	1225 gram/m²
Pile installation weight	ISO 8543	250 gram/m²
Pile thickness	ISO 1766	Approx 2 mm
Pile material		100% polyamide
Dimensional stability	ISO 2551	≤ 0.20%
Light fastness	EN ISO 105/B02	≥ 6
Electrical resistance	ISO 10965	≥ 10⁹Ω
Contact sound insulation	ISO 717-2	Δ Lw = approx 22 dB
Tested flammability standards	EN 45545-2	HL2
	BS6853	1b
	DIN 5510-2	SF 1-3
	ASTM E.648 ASTM E.662	Class 1 pass
Flotex meets the requirements of EN 14041		
Fire behaviour	EN 13501-1	B <sub>FL</sub> -s1
Slip resistance	EN 13893	DS: ≥ 0.30
Body voltage	ISO 6356	< 2 kV

Flotex FR is made to order





# coral® move FR

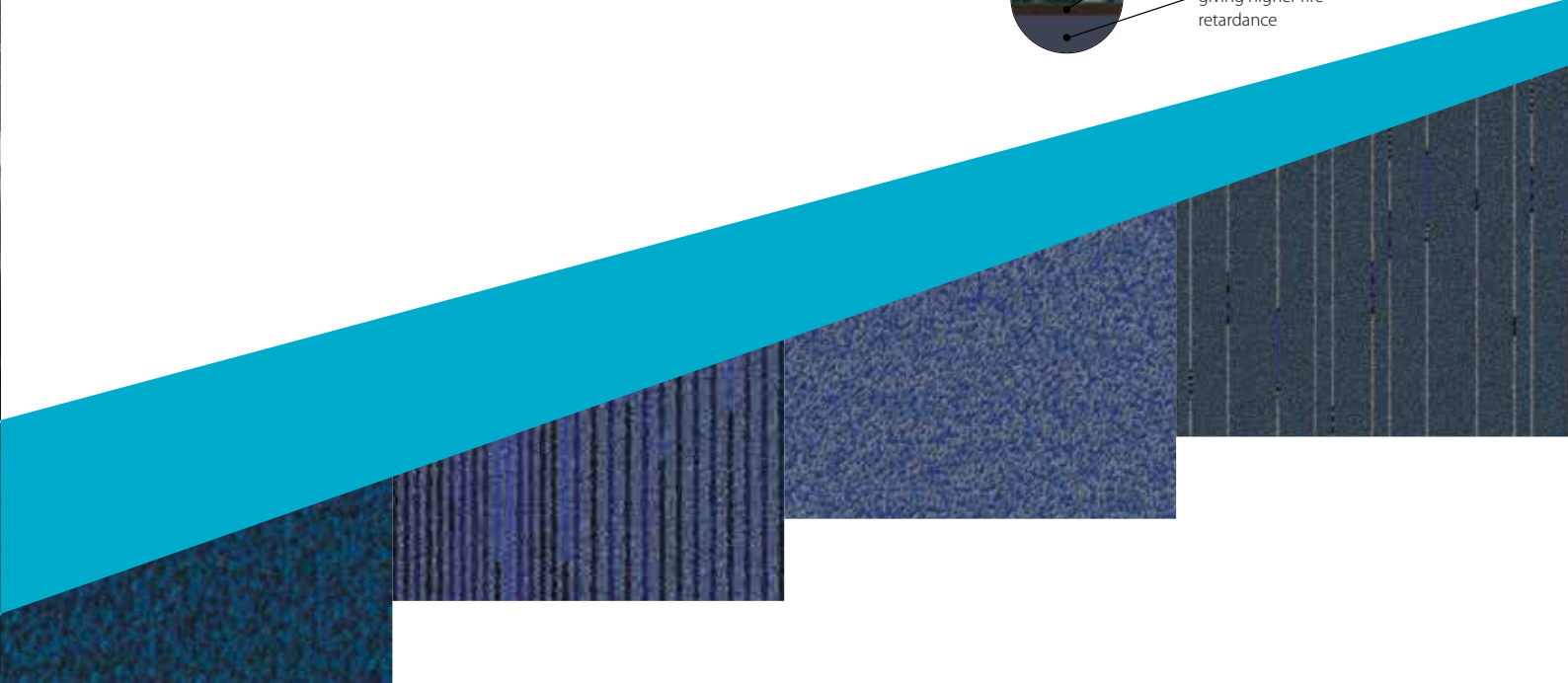
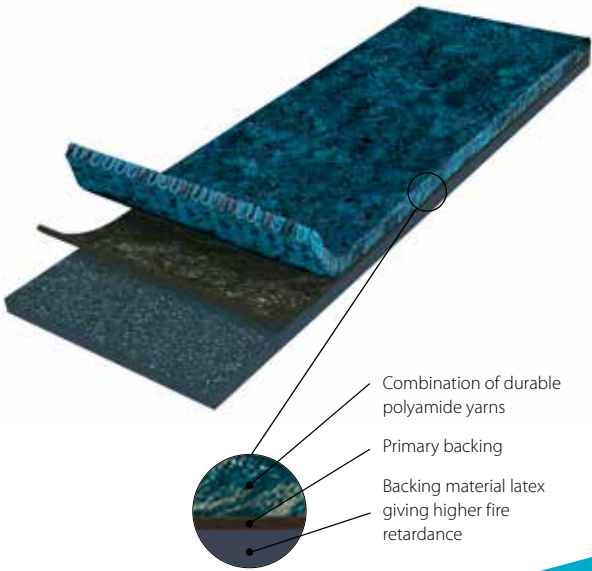
Carpet custom made to your design requirements

## coral® move FR

Coral Move FR is a tufted carpet solution for rail interiors offering great customisation possibilities to complement interior design and colour schemes.

**Benefits:**

- Warm and comfortable
- Reaction to fire EN 45545 : HL2
- Excellent soil hiding
- Slip resistant
- Acoustic properties



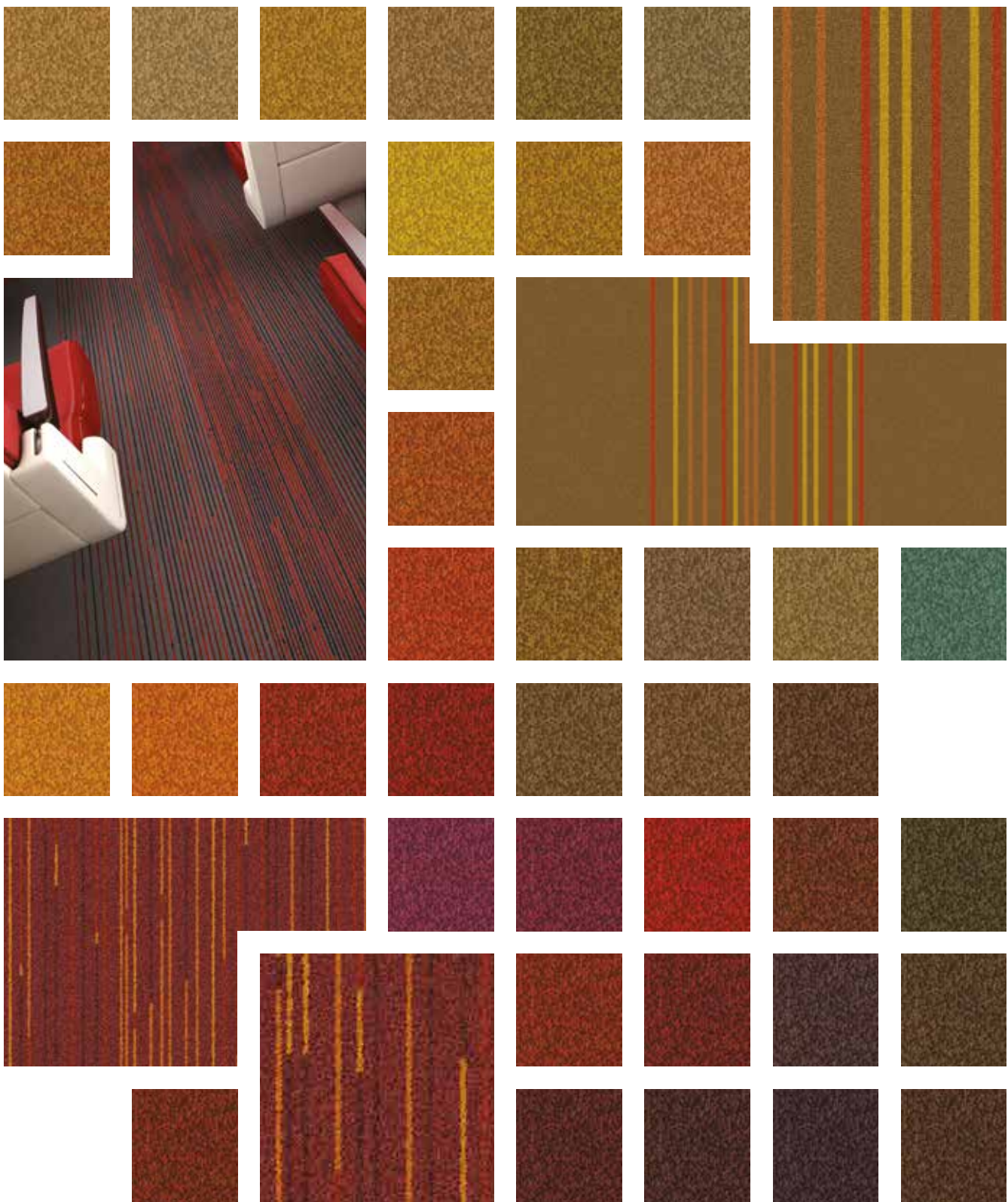
Many Coral products use Econyl® yarn which is made from abandoned fishing nets.





# coral<sup>®</sup> move FR

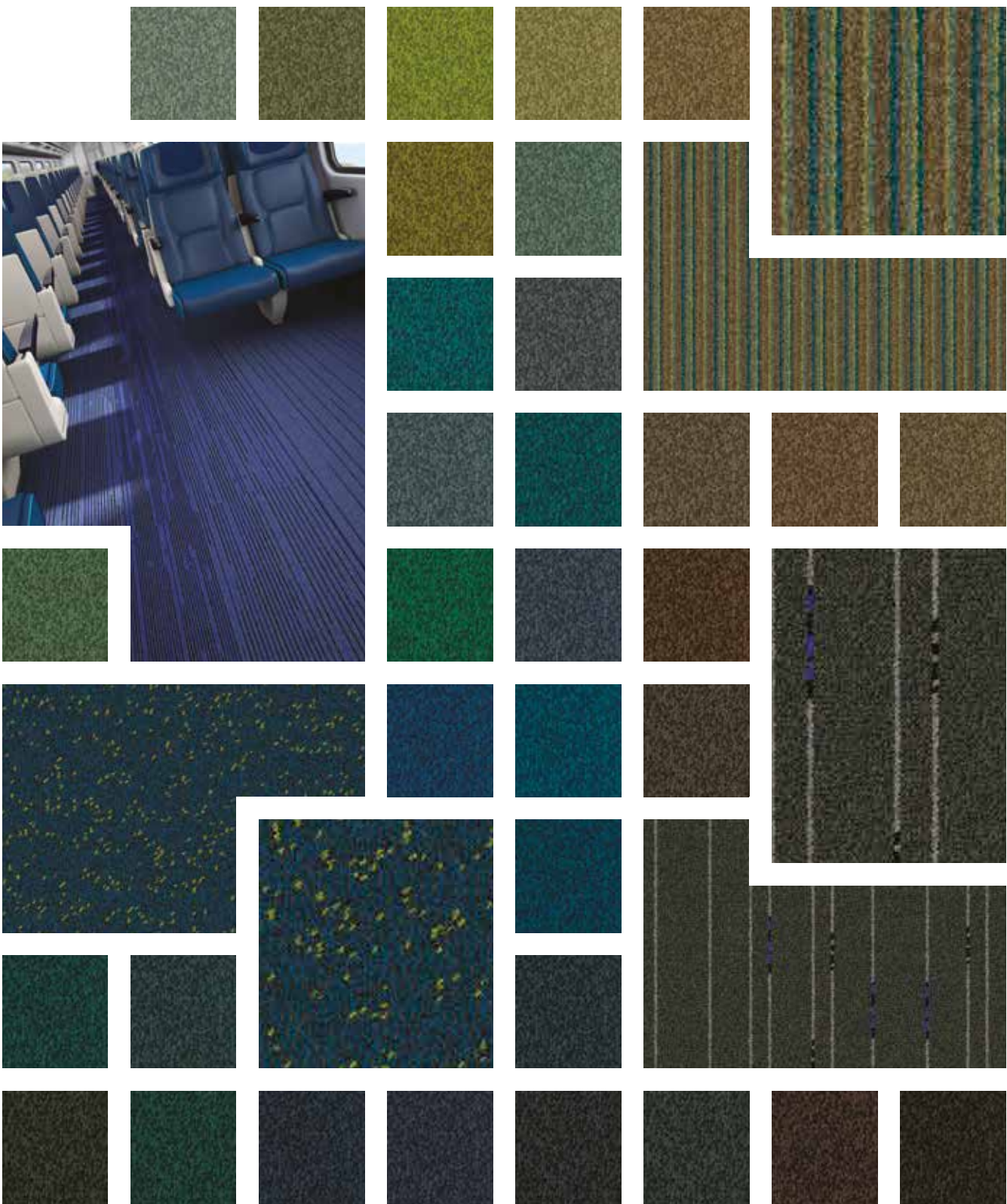
Coral Move FR is a bespoke made to order product and our design team will work to match design and colour requirements on an individual project by project basis.



Above is only a selection of the colours available, for further information on the full range, please contact us.

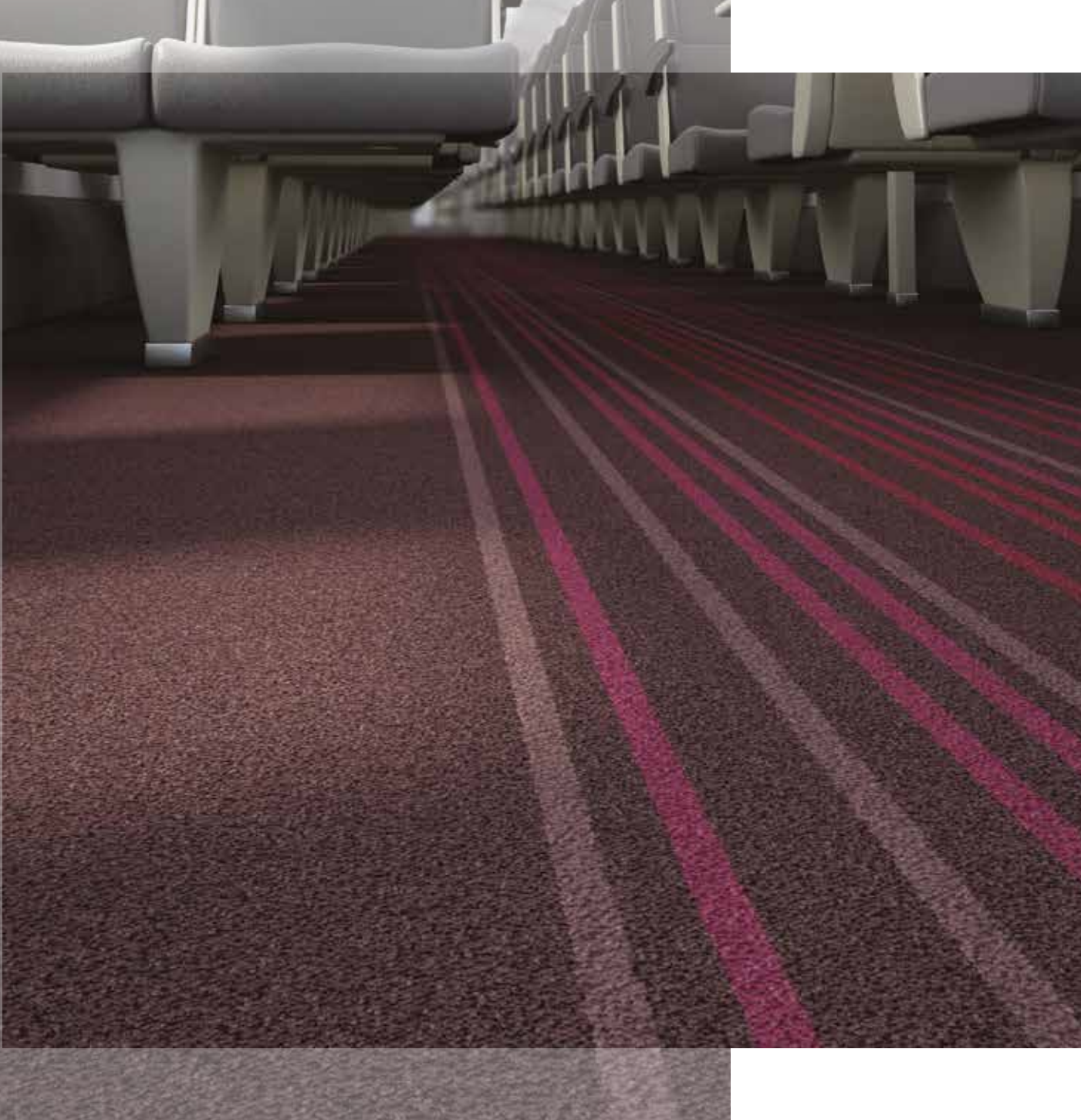
Below are just some examples of the designs you can create with Coral Move FR.

Coral Move is available in 136 colours



All Coral Move material is made to order.











# TECHNICAL SPECIFICATIONS

## Technical specifications





Coral meets the requirements of EN 1307

### Coral move FR

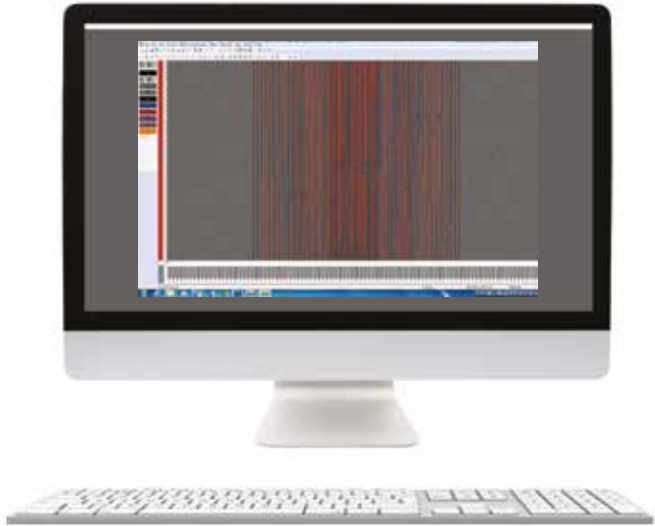
	Total thickness	ISO 1765	8 mm
	Roll width	EN-ISO 24341	185 cm (customizable)
	Roll length	EN-ISO 24341	27.5 m (customizable)
	Minimum order quantity		500 m²
	Total weight	ISO 8543	3000 gram/m²
	Pile installation weight	ISO 8543	750 gram/m²
	Pile thickness	ISO 1766	5.5 mm
	Pile material		100% polyamide BCF ECONYL®
	Colour fastness ratings:		
	Light	EN ISO 105/B02	8
	Rubbing	EN ISO 105/X12	4-5
	Water	EN ISO 105/E01	4-5
	Seawater	EN ISO 105/E02	5
	Water stains	EN 1307 annex G	5
	Shampoo	BS 1006	4-5
	Organic solvents	EN ISO 105/X05	5
	Tested flammability standards	EN 45545-2	HL2

Coral meets the requirements of EN 14041



	Fire behaviour	EN 13501-1	B <sub>FL</sub> -s1
	Slip resistance	EN 13893	DS: ≥ 0.30
	Body voltage	ISO 6356	< 2 kV
	Thermal conductivity	EN 12524	0.108 m² K/W

Coral move FR is made to order



**coral**<sup>®</sup> move FR





# SERVICE PRODUCTS



Uni welding rod



Multicolour welding rod

## Welding rods

Welding rods ensure high levels of hygiene because they make seams easy to clean while preventing water from penetrating the floor covering. Forbo offers welding rods in matching colours with each item. Gloweld is a unique welding rod for the application with linoleum. Gloweld glows in the dark and can therefore be used for signalling and or safety purposes.



## Installation tools and training

Based on our experience and our continuous research we can recommend and supply a complete assortment of high-grade installation tools. These will help you to achieve a simple and professional installation of our floor coverings. Forbo can provide you with an off- or onsite installation training.

## Adhesives

Forbo Flooring offers their own adhesives for all of their flooring products, we can offer the best adhesive for your specific type of application.



## Aquajet

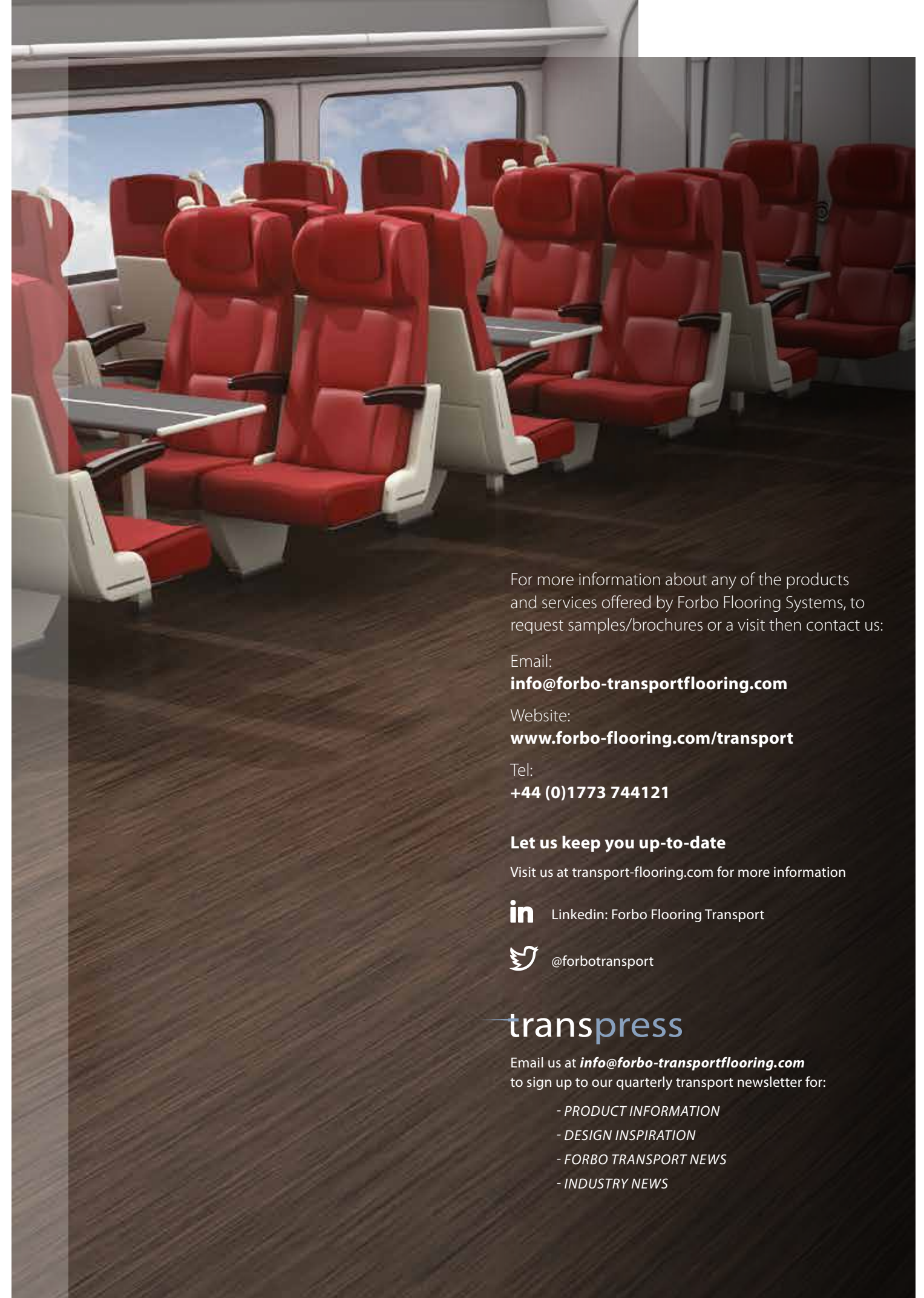
We recognise that sometimes a client wishes to create something totally unique, perhaps something specific to a particular project, such as signage to facilitate the restrictions and safety guidelines within the train. Whatever may be required, our in-house design team has skills and experience to turn ideas into reality.

From an initial concept, detailed drawing, or computer file, our design team prepares a flooring design that is transferred electronically to our Aquajet cutting

machines. These computer-controlled machines represent state-of-the-art cutting technology and produce precision cut items accurate to a fraction of a millimetre. The pattern is inlaid and, importantly, retains all the performance characteristics of the original product. Whether it is a complete rail layout in floor covering, a company logo, signage or thematic design, the possibilities are limitless.



*Cleaning and Maintenance data sheets are available online at [forbo-flooring.com/transportation](http://forbo-flooring.com/transportation)*



For more information about any of the products and services offered by Forbo Flooring Systems, to request samples/brochures or a visit then contact us:

Email:

**[info@forbo-transportflooring.com](mailto:info@forbo-transportflooring.com)**

Website:

**[www.forbo-flooring.com/transport](http://www.forbo-flooring.com/transport)**

Tel:

**+44 (0)1773 744121**

**Let us keep you up-to-date**

Visit us at [transport-flooring.com](http://transport-flooring.com) for more information



Linkedin: Forbo Flooring Transport



@forbotransport

**transpress**

Email us at **[info@forbo-transportflooring.com](mailto:info@forbo-transportflooring.com)** to sign up to our quarterly transport newsletter for:

- PRODUCT INFORMATION
- DESIGN INSPIRATION
- FORBO TRANSPORT NEWS
- INDUSTRY NEWS



A  
SECTOR

SAP 163046 10.2015

**All countries**

Forbo Flooring UK Limited  
High Holborn Road  
Ripley  
Derbyshire DE5 3NT  
E-mail: [info@forbo-transportflooring.com](mailto:info@forbo-transportflooring.com)  
[www.forbo-flooring.com/transport](http://www.forbo-flooring.com/transport)



creating better environments

**forbo**  
FLOORING SYSTEMS