

marmoleum® *click*  cinch LOC

- colors
- inspiration
- environment
- installation
- care



creating better environments

COMMITTED
TO THE HEALTH
OF ONE



Forbo

FLOORING SYSTEMS



create a better environment

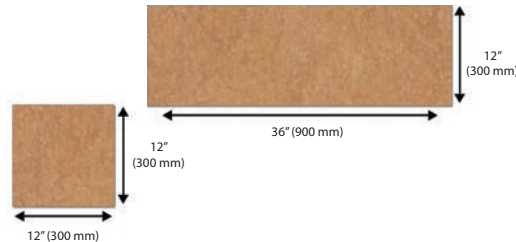
fun to design, easy to install, beautiful, healthy flooring

Creating beautiful, custom floors for your home is easy and fun with Marmoleum Click Cinch Loc. This naturally healthy, water-resistant flooring is made primarily from renewable resources, including linseed oil, wood flour, and pine rosin. These natural ingredients provide Marmoleum Click Cinch Loc with inherent anti-static properties that repel dust and dirt, making it easy to clean, reducing exposure to allergens, and contributing to better indoor air quality. The flooring "clicks" together for an easy, glue-free installation. These features make Marmoleum® Click Cinch Loc an ideal floor covering for people with asthma and allergies. Marmoleum® Click Cinch Loc also features antimicrobial properties that halt the breeding of harmful micro-organisms, including MRSA and C-difficile.

Not only does Marmoleum® Click Cinch Loc help create a healthy environment, it also creates a beautiful indoor environment. Available in a palette of 28 versatile colors, including 7 organic wood-look panels, Marmoleum® Click Cinch Loc makes it easy to create inviting spaces that are

unique to your home and lifestyle. Marmoleum® Click Cinch Loc provides beauty, durability, warmth and comfort underfoot, and is ideal for kitchens, living rooms, hallways, bedrooms, and offices.

Marmoleum® Click Cinch Loc is produced of natural linoleum on water-repellent HDF with a cork layer backing for an ecologically and acoustically sound solution. The panels and squares easily "click" into place using the Valinge 5G locking system for a secure, glue-free installation. The panels are approx. 12" wide x 36" long and can be used alone or in combination with the 12" x 12" squares. Also, since no glue is required, the floor can be walked on immediately after installation.



933224 chartreuse, 932939 black,
933136 concrete, 933866 eternity



933575 white cliffs, 933573 trace of nature,
935218 welsh moor



Canadian Flax Field

Marmoleum's key ingredient, linseed oil, is produced by pressing the seeds of the Flax plant



933575 white cliffs, 935237 black sheep

live in color



933423 painters palette



933858 333858 barbados



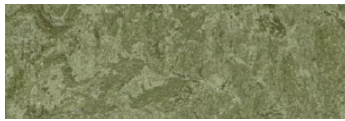
933038 333038 caribbean



933173 333173 van gogh



933828 333828 blue heaven



933255 333255 pine forest



933136 333136 concrete



933242 333242 adriatica



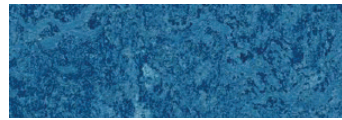
933575 * white cliffs



933245 333245 summer pudding



933251 333251 lemon zest



933030 333030 blue



93E5216 * pacific beaches (textura)



933127 333127 bleeckerstreet



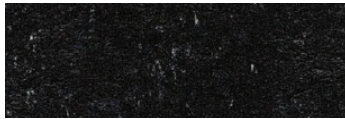
933224 333224 chartreuse



933866 333866 eternity



93E5231 * cliffs of moher (textura)



932939 332939 black



933872 333872 volcanic ash



933233 333233 shitake



935218 * welsh moor



933871 333871 silver birch



933874 333874 walnut



933573 * trace of nature



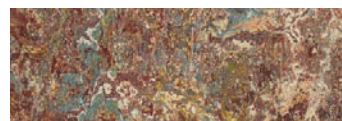
935239 * oxidized copper



933405 333405 granada



933407 333407 donkey island



933423 333423 painters palette



935237 * black sheep

* Striato colors only available in 12" x 36" approx panels

breathe easier

The carpet in your home can harbor millions of allergens, including mold, mildew, dust mites, animal dander, and pollen.

These eye-opening facts are the concerns of every family or home owner looking to maintain a healthy living environment. Below, you will learn more about these allergens, how they can affect you, and how Marmoleum® can dramatically reduce their presence in your home.

dust mites

Dust mites are tiny bugs nearly invisible to the naked eye that can infest your home by the millions. They crawl through your carpets laying eggs and feed off the dried saliva and skin cells from pets and humans (dander). The waste particles left behind by dust mites are a major cause of asthma, wheezing and other respiratory allergies¹. Every step you take on your carpet or every time you vacuum, small clouds of waste particles are propelled into the air where they can easily be inhaled. At least twenty minutes or more may pass until the particles settle back to the floor.

Your carpets can be treated for dust mites, but you can bet that won't keep them away. If you have dust mite allergies, the American College of Allergy, Asthma & Immunology (ACAAI) states that you may need to remove the carpets in your home² – especially in the bedroom¹.

dander

Your pet, plus carpeting on your floors, can equal a big problem. Pet dander can reach breathtaking levels (literally!) as it becomes trapped in soft materials such as carpet fibers and can remain there for up to six months³. Additionally, cats and dogs who are permitted outdoors can bring a multitude of fleas, pollen and mold spores into your home on their fur⁵.
⁶ – making your carpets a reservoir for unwanted allergens.



dust mite

caustic chemicals

Many factors affect the indoor air quality of your home: lead and pesticides can contaminate your carpets when they are innocently transported indoors by your shoes or on your pets; building materials emit harmful chemicals known as volatile organic compounds (VOCs) into the air; chemical fumes from the synthetic fibers, backing, padding, cleaners, and adhesives and glues used to install carpeting⁴; even the flame-retardants and stain-resistant materials are at fault. Indeed, one has saved many lives while the other has prevented many inconvenient messes, but both have been linked to a range of developmental and other adverse effects⁵. The Healthy Building Network adds that some vinyl flooring can leach dangerous substances – including phthalate plasticizers, lead, cadmium, dioxins and PVC (polyvinyl chloride, i.e. vinyl). PVC is listed as the worst plastic from an environmental and health perspective⁷.

here is how Marmoleum® can help

Marmoleum® Click Cinch Loc is made of natural ingredients and has both anti-bacterial and anti-allergen properties. Studies* have shown that harmful microorganisms cannot live or breed on Marmoleum® flooring, which makes it the only flooring choice for those concerned about their health and environment.

From Marmoleum® Click Cinch Loc's natural ingredients to its glue-free installation, you won't find ANY harmful substances in Marmoleum®, including lead, formaldehyde or chlorine. The result is a biodegradable floor that has reduced allergen levels, is bacteria-resistant, and easy to clean.

sources cited

- 1 <http://familydoctor.org/familydoctor/en/diseases-conditions/asthma/prevention/dust-mites-in-the-home.html>
- 2 http://www.aaaai.org/allergist/liv_man/trigger_avoidance/Pages/default.aspx
- 3 http://www.missionallergy.com/?fuseaction=page.display&page_id=55
- 4 <http://www.aafa.org/display.cfm?id=9&sub=18&cont=236>
- 5 <http://www.lung.org/our-initiatives/healthy-air/indoor-air-pollutants/carpet.html>
- 6 <https://www.care.com/a/creating-a-toxin-free-home-04161413>
- 7 <http://www.healthybuilding.net/news/2004/08/11/building-as-if-breathing-mattered-pvcs-contribution-to-asthma>

for more information

- EPA Indoor Air Quality resources: www.epa.gov/iaq/
- Green America, The Allergen-Free Bedroom: <http://www.greenamerica.org/livinggreen/bedrooms.cfm>
- Asthma and Allergy Foundation of America *Indoor Air Quality Fact Sheet*: <http://www.aafa.org/display.cfm?id=9&sub=30>
- American Lung Association, Healthy Air at Home: <http://www.lung.org/healthy-air/home/>
- National Asthma Campaign (U.K.): www.asthma.org.uk
- Mother Earth News, Green Flooring choices: <http://www.motherearthnews.com/green-homes/natural-homes-top-five-green-flooring-choices.aspx>
- The Healthy Flooring Network (U.K.): <http://www.healthyflooring.org/alternatives.html>
- HouseDustMite.org: www.housedustmite.com



332939 black, adriatica 333242,
933136 concrete



a natural choice

natural Marmoleum®

Marmoleum® Click Cinch Loc has a top layer of natural Marmoleum®. The main ingredient in Marmoleum® is **linseed oil**, produced by pressing the seeds of the flax plant. The flax plant, also a source for linen, is an easy-to-cultivate plant that is in abundant supply.



Pine rosins are mixed with the linseed oil to produce a flexible binder. The pine trees from which the rosins are extracted exist in abundance throughout the world.



Wood flour is obtained through controlled forestry, including the planting of special forests. No tropical hardwoods are ever used.



When it comes to our beautiful colors, only **ecologically friendly pigments** are used.



The backing for Marmoleum is made from spun yarn of strong **jute** fiber, grown primarily in India and Bangladesh. Jute is plentiful and highly renewable.



why choose Marmoleum® Click Cinch Loc?

1. easy to install

Marmoleum® Click Cinch Loc panels and squares are easy to install. With a simple tongue & groove mechanism, the panels simply “click” into place. And no glue is required, so the floor can be walked on immediately after installation.

2. easy to clean

Thanks to Marmoleum®’s natural ingredients, Marmoleum® Click Cinch Loc is anti-static, so dust won’t cling to it. Keeping your floor clean and dust free is easily achieved by dust mopping and damp mopping.

3. healthy & hygienic

Because it is so easy to clean, Marmoleum® Click Cinch Loc makes life easier for people with asthma, allergies, and other respiratory disorders.

Marmoleum’s ability to inhibit the growth of bacteria* stems from the natural raw materials that go into its production, namely linseed oil. An inherent property of the product, the anti-bacterial qualities of Marmoleum won’t diminish over time, giving peace of mind and constant protection from the moment it is installed.

* based on Laboratory testing

4. warm & comfortable

Because Marmoleum® Click Cinch Loc is a natural product, like wood, it makes your home snug and warm. It reaches room temperature quickly and is suitable to install over hydronic radiant heat systems. Marmoleum® Click Cinch Loc features a cork backing for quiet and comfort underfoot.

5. beautiful

Available in 28 beautiful colors of panels and squares, Marmoleum® Click Cinch Loc allows you to create an environment unique to your home and lifestyle.



imagine the possibilities



933405 granada, 933872 volcanic ash



333828 blue heaven, 333866 eternity



333224 chartreuse, 333828 blue heaven,
333136 concrete



93E5231 cliffs of moher



93E5216 pacific beaches



935239 oxidized copper

2. Start by measuring the room and determining the starting point in the room. It is recommended to install the material perpendicular to the incoming light from the main window. This will help minimize the appearance of the seams throughout the room.

3. Lay out several pieces with the groove side facing right.

4. To ensure that all pieces are clicked together at exact 90° angles, install a temporary piece along the front wall (parallel with the material). Click the tongue of the first piece into the groove of the temporary piece, allowing the temporary piece to sit halfway on the first piece. See Figure 2. The temporary piece in the figure is the top piece.

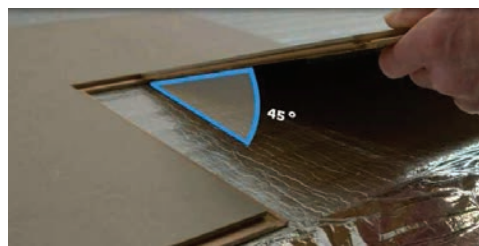


NOTE: The pieces must be perfectly aligned with one another. Any variation in alignment from piece to piece can create gaps between one row and the next.

5. Place the tongue of the second piece into the groove of the temporary board at a 45° angle. See Figure 3.

6. Slide it gently to the left. Lower it into the groove of the first piece and press it into place. You should hear a clicking sound when it locks into place.

7. Move the temporary board so it now sits halfway on the second piece. See Figure 4.



8. Continue these steps until the end of the row.

9. Before laying the final piece, remove the temporary board and place spacers that are 3/8" wide along the length of the front wall as well as the left side wall.

10. Slide the entire first row so it is touching the spacers. Measure

the distance from the edge of the last piece to the wall. Subtract 3/8" and cut the final piece to fit. Be sure to cut the piece so that the cut edge will be touching the wall when it's installed.

NOTE: If using a hand saw, the Marmoleum® side must be facing upwards. If using a power saw, the direction of the blade must cut into the Marmoleum® side of the board (Marmoleum® side facing downwards).

11. Move the row away from the wall and with the use of a temporary board, install the final piece to the row.

12. Carefully slide the row back to the wall and place a 3/8" spacer at the right side wall.

13. When installing Marmoleum® Click Cinch Loc panels, the joints of these pieces must be staggered a minimum of 12". It may be necessary to cut the first piece of the row to create this stagger. This same stagger can be created by mixing both panels and squares throughout the installation. Marmoleum® Click Cinch Loc squares can be installed with all 4 corners touching, or in a checkerboard pattern.

14. Start installing the second row to the first row as outlined above in Steps 5 – 7. The first row is used in place of the temporary piece.

15. The remainder of the room is installed following these steps. If there are any other fixed objects in the room, such as cabinets, pipes, etc., it is important to leave a minimum of 3/8" spacer where the flooring meets these objects.

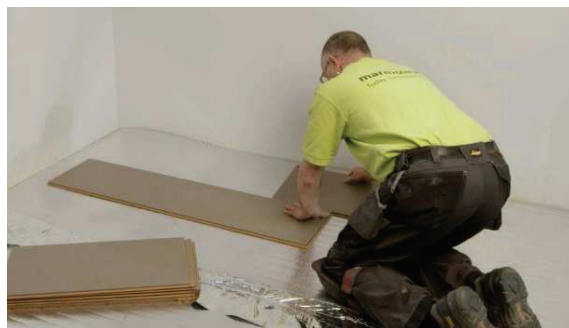
16. For the final row, be sure to leave a minimum of 3/8" spacer at all walls. The bottom groove that will be against the wall can be sawed off if necessary.

17. For areas where there are door moldings or other obstructions that the material must slide under, remove the groove from the previous row. Then, instead of clicking the final row into place, it will be slid into place. These areas must be secured using wood glue where the tongue and groove would meet.

18. After the final row is in place, molding, such as a quarter round, is installed to cover the expansion perimeter around the room.

19. If for any reason you need to disassemble the floor, gently remove the final row and take the pieces apart starting from the last board on the right.

20. The floor can be walked on immediately after installation.





caring for your floor

Marmoleum® Click Cinch Loc has a strong, durable protective top layer – Topshield™2. This innovation from Forbo ensures a highly effective shield against dirt and scuff marks. Marmoleum® with Topshield™2 is ready for use immediately following installation and does not require the application of additional protective coats of finish. With Topshield™2, your Marmoleum® floor will maintain its beautiful appearance with simple cleaning. Dry dusting is a fast and easy way to keep your floor free from loose dirt. Remove spots with a mop or cloth dampened with diluted Forbo Neutral pH Cleaner. Avoid excessive use of water on the floor, and make sure chair and furniture legs are covered with felt protectors. An entrance mat will protect the floor from dirt.



Initial Care Following Installation

1. Remove all surface soil, debris, sand and grit by sweeping, vacuuming or dust mopping.
2. Mix 1/2 – 1 ounce of Forbo Neutral pH Cleaner per 1 gallon of unheated tap water.
3. Apply the solution to the floor. Do NOT flood the floor. The solution can be applied with a mop and bucket.
4. Pick up soil and excess solution with a clean mop. Rinse mops frequently and change the solution as needed.
5. Rinse the entire floor surface with a clean mop using clean, cool water. Pick up rinse water with a clean, dry mop or towel.
6. Allow the floor to dry thoroughly before allowing traffic.

Routine Floor Care Procedures

1. Remove all surface soil, debris, sand and grit by sweeping, vacuuming or dust mopping.
2. Mix 1/2 – 1 ounce of Forbo Neutral pH Cleaner per 1 gallon of unheated tap water.
3. Apply the solution to the floor. Do NOT flood the floor. The solution can be applied with a mop and bucket.
4. For ingrained dirt, a non-abrasive scrubbing sponge may be required.
5. Pick up soil and excess solution with a clean mop. Rinse mops frequently and change the solution as needed.
6. Rinse the entire floor surface with a clean mop using clean, cool water. Pick up rinse water with a clean, dry mop or towel.
7. Allow the floor to dry thoroughly before allowing traffic.

Spots & Spills

The vast majority of spills can be cleaned off your Marmoleum® satisfactorily. If there are spills or pet “accidents”:

1. Act quickly.
2. Scrape or blot as much as possible.
3. Mop the floor with a solution of Forbo Neutral pH Cleaner.
4. Damp mop with clean water.
5. If necessary, repeat steps 3 and 4. If the stain persists, as it may with glue, varnish, paint, ink, tar, cosmetics, shoe polish, some wines, coffee and some other substances, you may need to allow the solution to sit or “dwell” on the floor for several minutes. Rub the stained area with a green nylon kitchen pad then rinse the area with clean water. Repeat if necessary.

If the stain persists, contact Forbo Product Support & Education Services before trying any other procedures.

For further information on restoration, please contact Forbo’s Product Support & Education Services at +1-800-842-7839.



933858 barbados, 933872 volcanic ash



333245 summer pudding,
333251 lemon zest



COMMITTED
TO THE HEALTH
OF ONE



93E5216 pacific beaches

North American Headquarters
Forbo Flooring Systems
8 Maplewood Drive
Humboldt Industrial Park
Hazleton, PA 18202
Tel.: 1-800-842-7839
Fax: 570-450-0229
www.forboflooringNA.com

Canada Office
Forbo Flooring Systems
111 Westmore Drive
Toronto, ON M9V 3Y6
Tel.: 1-800-268-8108
Fax: 416-745-4200
www.forboflooringNA.com

Item#192426/01-17



marmoleum® *click*  *cinch* **LOC**



creating better environments

Forbo
FLOORING SYSTEMS