

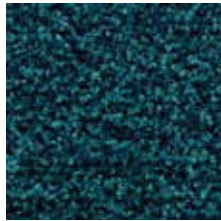
All colors of
Coral Tile
are available in
20"x20" approx.
(50 cm x50cm)
phthalate free vinyl
backed entry tile.

coral[®] tile

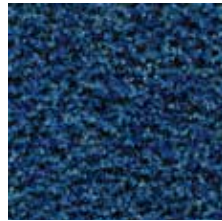
- **STOP** up to 95% of the walk-in dirt and moisture
- **REDUCE** maintenance & cleaning costs by up to 65%
- **MINIMIZE** liability from slips and falls
- **MAXIMIZE** the useful life of interior finishes
- **LENGTH MATTERS!** longer walk off = greater protection



5709 | royal purple



5705 | bondi blue



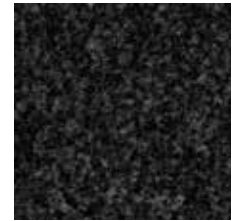
5722 | cornflower blue



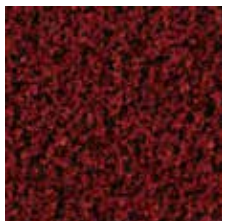
5727 | stratos blue ♦



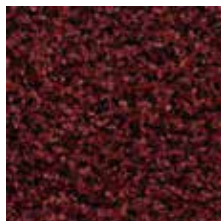
5710 | asphalt grey ♦



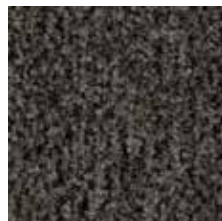
5721 | hurricane grey ♦



5723 | cardinal red



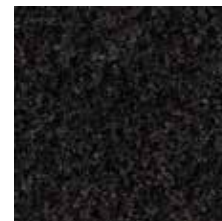
5706 | brick red ♦



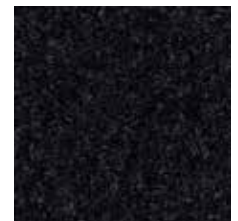
5714 | shark grey



5724 | chocolate brown ♦



5715 | charcoal grey ♦



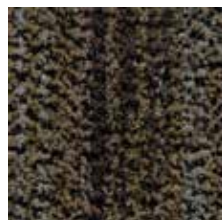
5730 | vulcan black ♦



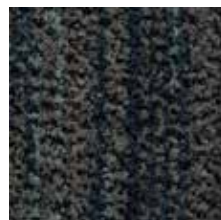
5716 | masala brown



5754 | straw brown



5764 | petrified grey



5767 | slate blue



5741 | cannon grey ♦



5750 | aztec black

COMMITTED
TO THE HEALTH
OF ONE



creating better environments

♦ Items are stocked. (5741 | cannon grey stocked in tile only)
The lead time for non-stock items is 6-8 weeks.

Forbo

FLOORING SYSTEMS



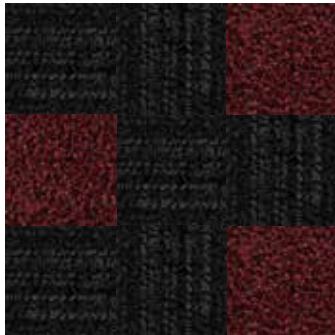
95%
of walked in dirt and moisture can be kept out with Coral

65%
reduction in cleaning costs

Physical Characteristics:
(dimensions are approximate)

- Gauge 0.354" (9 mm)
- Backing EVERFORT® vinyl
- Tile size: Approx. 20" x 20" (50 cm x 50 cm)
- Carton Contents 12 tiles in box: 32.29 ft² (3m²)

QUARTER TURNED:



CHECKERBOARD:

