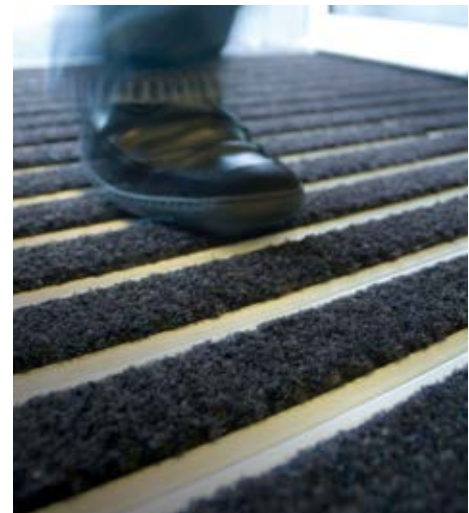
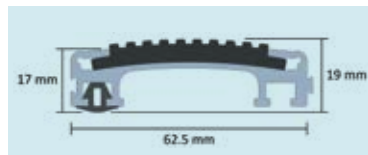
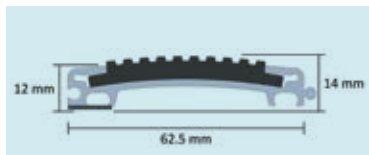


| | 12mm Grid | | 17mm Grid | |
|-------------------------------------------|-----------------------------------------------------------|------------------------------------------------------------|-----------------------------------------------------------|------------------------------------------------------------|
| Maximum length per module | 3000mm | | 3000mm | |
| Maximum width per module | 750mm | | 750mm | |
| Maximum weight per module | 23kg | | 23kg | |
| | Rubber | Textile | Rubber | Textile |
| Depth to height of aluminium | 12mm | 12mm | 17mm | 17mm |
| Depth to height of infill | 14mm | 18mm | 19mm | 23mm |
| Infill material | Rubber and Ultragrip Safety Rubber | Burford/Coral Classic/ Coral Brush pure | Rubber and Ultragrip Safety Rubber | Burford/Coral Classic/ Coral Brush pure |
| Construction | Closed | | Closed | |
| Total weight | 10.5kg/m ² | Approx 9kg/m ² | 17.2kg/m ² | Approx 15kg/m ² |
| Max static load | 100kg/m ² | | 100kg/m ² | |
| Add row for Fire behaviour EN ISO 9239-1 | Ultragrip B ₁ s1 | | Rubber C ₁ s1 | Textile B ₁ s1 |
| Dynamic load 2 wheels 80mm, 20,000 passes | 200kg | | 200kg | |
| Ramp frame model | ARF 50 | | ARF 70 | |
| Manufacturing method | Entrance flooring system with carriers and rubber infills | Entrance flooring system with carriers and textile infills | Entrance flooring system with carriers and rubber infills | Entrance flooring system with carriers and textile infills |
| Wiper material | Rubber | Needlefelt/PVC backed textile | Rubber | Needlefelt/PVC backed textile |
| Pile material | N/A | 100% polypropylene (Burford) /100% polyamide (Coral) | N/A | 100% polypropylene (Burford) /100% polyamide (Coral) |



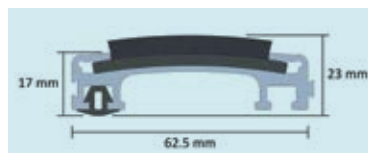
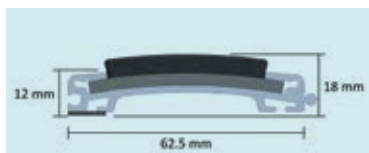
Nuway grid 12mm

Nuway grid 17mm



Nuway grid 12mm with rubber or Ultragrip insert

Nuway grid 17mm with rubber or Ultragrip insert



Nuway grid 12mm with textile insert

Nuway grid 17mm with textile insert

