

MADE TO  
**GO  
ROUND**

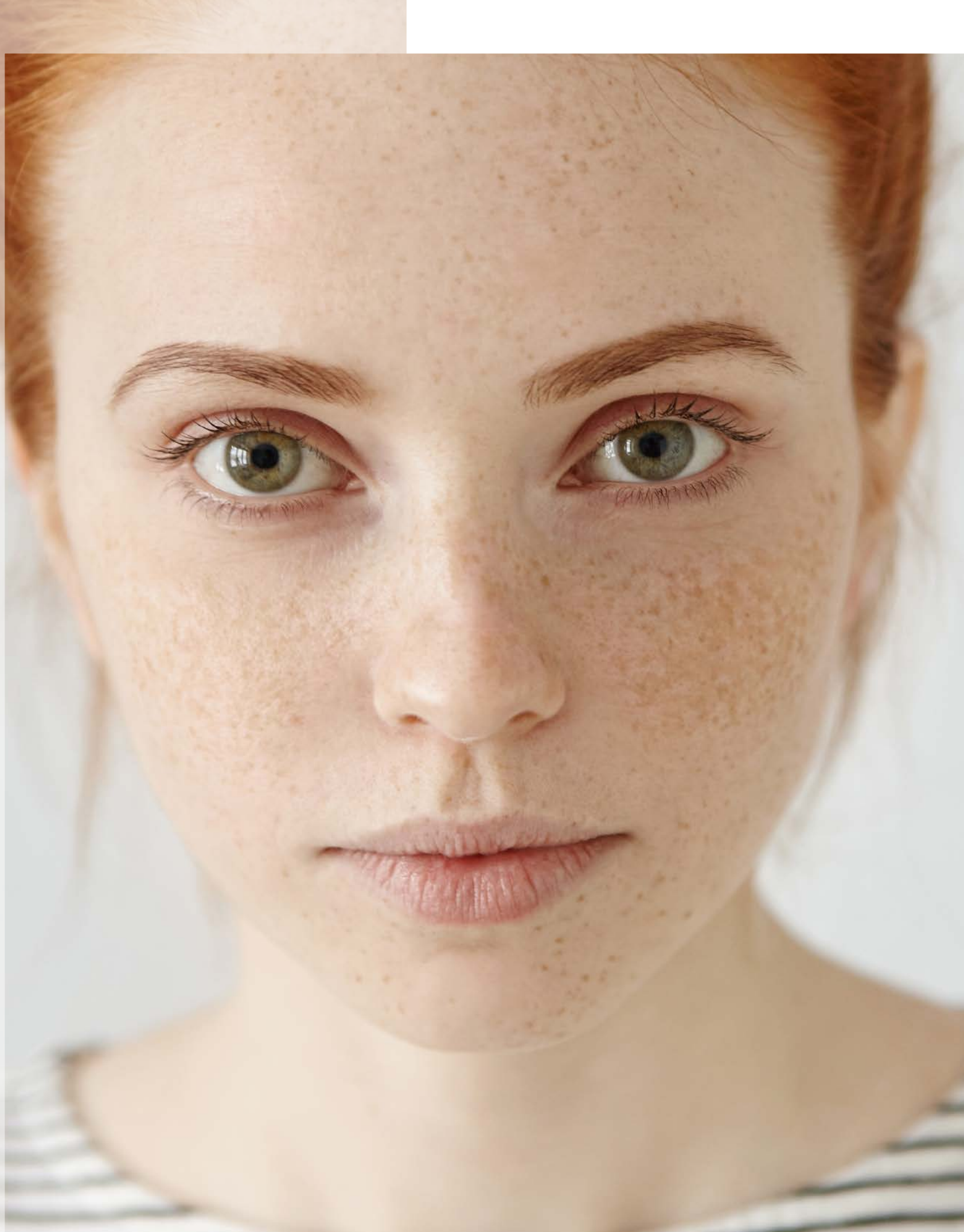
marmoleum® cocoa

THE BEST  
**NATURAL**  
FLOORING

creating better environments

**Forbo**  
FLOORING SYSTEMS





# A NATURAL BEAUTY

Once upon a time, there was a magical flooring material called **Marmoleum**. It was unlike any other flooring on the market, as it was not only beautiful and stylish, but also **incredibly eco-friendly** and functional.

Marmoleum had been around for over 150 years, and during that time, it had been **perfected to meet all the needs** of modern buildings. It was made from natural, renewable resources, such as linseed oil and wood flour, making it one of the most environmentally friendly flooring options available.

The magic of Marmoleum was not just limited to its practical benefits, however. It also had a **mesmerizing effect** on those who laid eyes on it. Whenever someone walked into a room with Marmoleum floors, they couldn't help but stare in awe at its beauty and wonder how something so natural could look so elegant.

In the end, Marmoleum proved that it was truly a flooring material unlike any other, meeting all the needs of design, planet safety and functionality in the past but certainly also in the future.

THIS IS NOT A FAIRY TALE  
BUT A TRUE STORY. THE  
FUTURE IS NOW, WE NEED  
SUSTAINABLE FLOORING  
WITHOUT OFFSETTING



# WHY MARMOLEUM?

Because the world  
needs biobased  
and climate positive  
flooring!

With the planet's resources vanishing quickly, it is of ever-growing importance to ensure a circular economy, where products are developed and manufactured to be recycled and reused for a new life and at the same time prevent and sequester carbon emissions.

Marmoleum is the perfect choice for those looking for a flooring option that is both beautiful and environmentally friendly.

But that's not all. Marmoleum with its Topshield pro surface finish is also incredibly durable, resistant to scratches and stains, and easy to clean. Plus, it comes in a wide range of colours and patterns, allowing you to truly customize your floors to your taste and preferences.

Already boasting best in class quality, but with 97% use of natural raw materials of which 70% rapidly renewable and 43% recycled content it is a true natural beauty. It is CO<sub>2</sub> positive cradle to gate, without offsetting.

INVEST IN MARMOLEUM  
TODAY AND MAKE A  
POSITIVE IMPACT ON THE  
WORLD







# A NATURAL REVOLUTION

Marmoleum is circular ready: reducing your carbon footprint and increasing the use of post consumer recycled content, it can be used over and over again.

Marmoleum cocoa in total contains 43% combined recycled content derived from installation waste and uplifted flooring, but also internal recycling of production waste and other industry recycled materials like wood flour and cocoa husks.

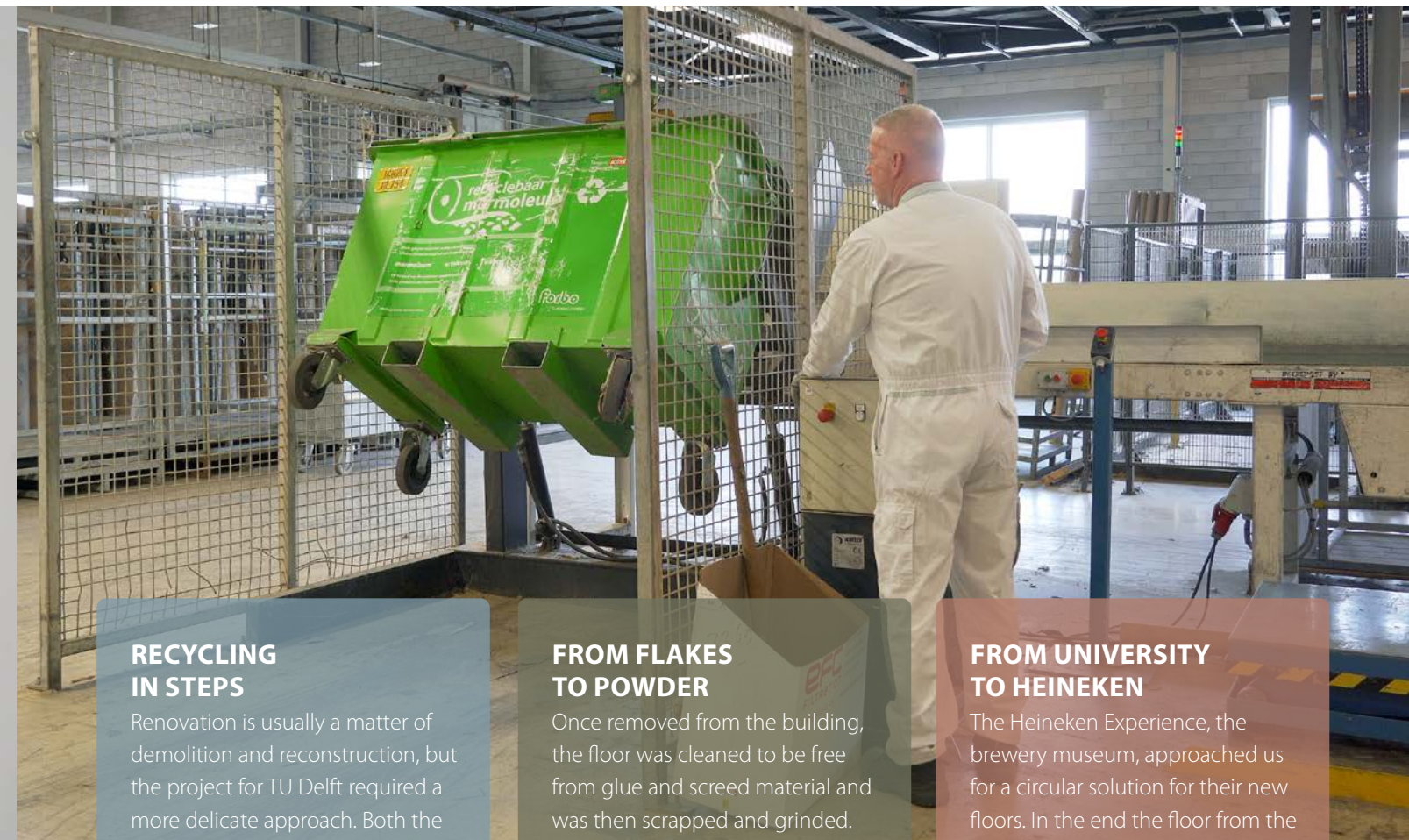
In this range, we aim to maximize the % of end-of-life recycled Marmoleum floors specifically.

From the recycled content, 33% is recycled pre- and/or post-consumer flooring waste. The balance between the pre- and post-consumer waste varies, due to availability of installation waste and old floors through our Back-to-the-Floor program.

The right mix between pre- and post-consumer material is needed to guarantee flooring product quality. The quality of post-consumer material is very challenging. To guarantee high quality flooring our recycled content is fully tested against health and safety norms, before we reuse it in our new floors.

All-in-all it results in less pollution for the next generation and every m<sup>2</sup> saved from incineration after fulfilling its intended purpose, saves emissions to the equivalent of 1.8 kg CO<sub>2</sub>.





#### RECYCLING IN STEPS

Renovation is usually a matter of demolition and reconstruction, but the project for TU Delft required a more delicate approach. Both the subfloor and the floor covering needed to remain as intact as possible and contamination of the material had to be avoided. With a floor stripper, the Marmoleum was removed quickly and meticulously.

#### FROM FLAKES TO POWDER

Once removed from the building, the floor was cleaned to be free from glue and screed material and was then scrapped and grinded. About one third could be reused in new linoleum, the rest was used for other industries.

#### FROM UNIVERSITY TO HEINEKEN

The Heineken Experience, the brewery museum, approached us for a circular solution for their new floors. In the end the floor from the University in Delft ended up in a new floor for the famous brewery in Amsterdam.

# MAKING NEW MARMOLEUM from a 20-year-old floor

Currently, circularity has not yet been achieved on a large scale in the building industry for flooring. Solutions are challenging when the flooring is glued to the subfloor, which is the case for most of the resilient flooring in use today.

#### Pioneering with circular Marmoleum

In 2021, a project was initiated with the Technical University of Delft in The Netherlands to take back 13,000 m<sup>2</sup> of old Marmoleum which had been installed in the Faculty of Electrical Engineering, Mathematics and Computer Science (EEMCS) for over 20 years. The challenge was to fully recycle these floors into brand new Marmoleum, a task which was quite uncommon.





# marmoleum® cocoa



**3588** | eucalyptus

LRV 31%



**3590** | meringue

LRV 51%



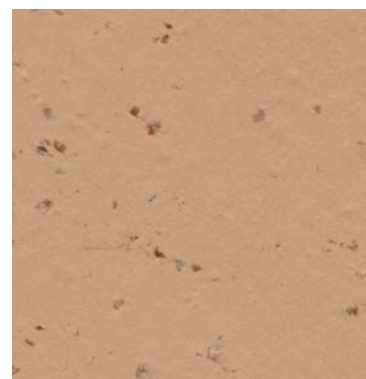
**3584** | white chocolate

LRV 60%



**3582** | earl grey chocolate

LRV 33%



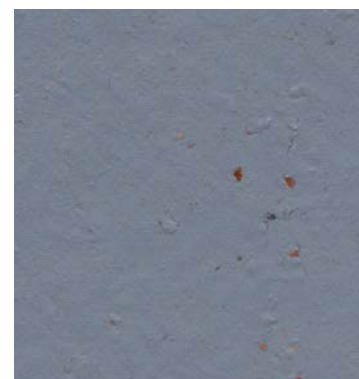
**3592** | salted caramel

LRV 32%



**3593** | matcha

LRV 31%



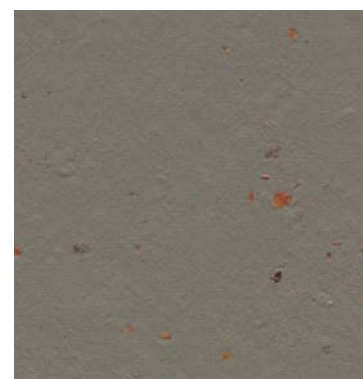
**3586** | indigo milk

LRV 23%



**3580** | milk chocolate

LRV 20%



**3589** | nori

LRV 25%



**3583** | chocolate blues

LRV 9%

Circularity and beauty are united in Marmoleum cocoa. The contemporary design, refined aesthetics and modern selection of colours make it a timeless floor that fits everywhere. It combines the liveliness of cocoa husks with the calmness of mineral tones.







# THE PILLARS OF OUR AMBITION

Three words are at the foundation of everything we do:

Transparency, circularity  
and renewability

By centering what we do around these values, we ensure that everything that comes from Forbo Flooring Systems delivers value to both people and the planet.

### PRODUCT DEVELOPMENT & DESIGN

- Marmoleum cocoa is designed to go round, it contains recycled content from end-of-life, post installation, cross-industry and closed loop waste streams.
- Timeless design that fits everywhere for everyone, the floor doesn't get outdated. The longer the floor can be used, the more circular it is.
- Net Fit installation lowering total footprint.

### LONGLASTING & EASY TO MAINTAIN

- Marmoleum is highly durable, the longer the floor can be used, the more circular it is. Sequestering carbon and creating no waste.
- The Topshield pro finish makes Marmoleum easy to clean, hard-wearing and resistant to stains.
- Marmoleum is fit for purpose, for many applications, no wax, no polish needed.

### RECYCLING AND END-OF-LIFE

- We've closed the loop with Marmoleum cocoa, the natural flooring solution that can be used over and over again.
- Of the total recycled content there is always 33% recycled pre-and/or post-consumer flooring waste.
- We've created a fully safe end-of life recycling process with traceable uplifted Marmoleum flooring.
- Every m<sup>2</sup> saved from incineration after fulfilling its intended purpose, saves emissions to the equivalent of 1.8 kg CO<sub>2</sub>.

### SOURCING & RAW MATERIALS

- Made out of 97% natural and renewable raw materials.
- All raw materials are obtained following the ethical and sustainable SA8000 and ISO 14001 certification.
- Naturally plastic free and phthalate free flooring.

### PRODUCTION AND DISTRIBUTION

- Climate positive cradle to gate without offsetting and CO<sub>2</sub> neutral when installed and ready for use based on EPD (Environmental Product Declaration) Marmoleum sheet 2.5mm and 2.0mm, 2023.
- 100% green electricity.

3592 | salted caramel





3582 | earl grey chocolate, 3586 | indigo milk

# HOW CAN WE HELP?

We have given you all benefits why a Marmoleum floor is the best solution for your project. We are happy to help you specify this further. Use our various tools or contact us directly.

## Marmoleum cocoa on the website

You can find all designs, patterns and colours on our website.  
[www.forbo-flooring.com/marmoleumcocoa](http://www.forbo-flooring.com/marmoleumcocoa)

## More information about Marmoleum

Read the full Marmoleum story on our website.  
[www.forbo-flooring.com/marmoleum](http://www.forbo-flooring.com/marmoleum)

## Floorplanner

Would you like to visualize the floor you have in mind in a specific room or even your own project? Please go to our floorplanner and play around with designs and images.  
[www.forbo-flooring.com/floorplanner](http://www.forbo-flooring.com/floorplanner)

## Sample service

Would you like to receive a sample, please go to our website or contact our local customer service.

## Installation, cleaning & maintenance

On our website you will find videos, PDF downloads and more to help you find the best way to install Marmoleum or to learn how you clean and maintain your floor. Our technical teams are just a phonecall away should you still have questions.  
[www.forbo-flooring.com/marmoleumfloorcare](http://www.forbo-flooring.com/marmoleumfloorcare)

## Inspiration & references

Would you like to see how others apply Marmoleum, then please have a look at the 'Inspiration & references' part of our website.  
[www.forbo-flooring.com/references](http://www.forbo-flooring.com/references)



3589 | nori

## BIM files

Should you want to integrate the floors in your own technical drawings we have BIM data for all floors for you available.  
[www.forbo-flooring.com/BIM](http://www.forbo-flooring.com/BIM)

## Protect your floor

As one of the elements to keep your floor for longer is the use of a good entrance system, we kindly refer to our entrance products.  
[www.forbo-flooring.com/entranceflooring](http://www.forbo-flooring.com/entranceflooring)



## Contact

Should you have remaining questions, please don't hesitate to contact us via;  
[www.forbo-flooring.com/contact](http://www.forbo-flooring.com/contact) or sent an email to [question@forbo.com](mailto:question@forbo.com)





3580 | milk chocolate

Find us on



**Forbo Flooring**

P.O. Box 13  
1560 AA Krommenie  
The Netherlands  
T: +31 75 647 74 77  
F: +31 75 647 77 01  
question@forbo.com  
www.forbo-flooring.com

creating better environments

**Forbo**  
FLOORING SYSTEMS