



BY APPOINTMENT TO H.M. THE QUEEN
MANUFACTURERS OF FLOORCOVERING
FORBO FLOORING UK LTD, KIRKCALDY

FLOOR COVERING SOLUTIONS GOVERNMENT SPACE

Crown
Commercial
Service
Supplier

RM3747



creating better environments

forbo

FLOORING SYSTEMS



WHY DEAL WITH MULTIPLE SUPPLIERS
WHEN YOU CAN DEAL WITH ONE?

FORBO FLOORING SYSTEMS IS A GLOBAL PRODUCER OF FLOORING SOLUTIONS.

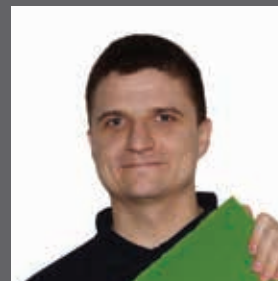


Our flooring solutions offer includes:

- Environmentally friendly, functional and design-oriented Marmoleum
- An extensive range of sheet Project vinyls, Acoustic vinyls and Safety vinyls
- Static control flooring for areas with sensitive electronic equipment
- High quality European manufactured Luxury Vinyl Tiles
- Entrance flooring systems that keep interior floors clean, dry and safe
- Carpet tiles for both public and commercial environments
- Flocked sheet and tile for areas that need the benefits of both textile and resilient floor coverings
- Cushioned vinyls for the home



Here is a selection of the thousands of men and women that create Forbo floor coverings in 12 manufacturing sites across Europe, including five in the UK.



OPEN AND HONEST **ADVICE**

As Forbo offer the largest and most comprehensive range of floor coverings, you can always rely on us to advise you openly and honestly on the best floor covering product, or combination of different products, to meet your requirements.

Our product offer is backed up by the reassurance that Forbo is the only flooring manufacturer on the **Crown Commercial Services framework agreement for 'Building Materials and Associated Services'. (RM 3747, Lot 7 – flooring and tiling)**. According to CCS, by using the framework, customers can benefit from:

- *A lean procurement route to market*
- *Compliance with EU procurement legislation*
- *Process savings - allowing customers to concentrate on core activities*
- *Discounted list prices ensuring value for money*

In the spending reviews of late 2015, the government announced that they would support segments such as education, to make substantial 'procurement savings by the end of the parliament through benchmarking and improved framework contracts'. So working with a supplier that's on framework agreements, may help reach procurement savings targets.

To find out more about the CCS framework for Flooring, please visit ccs-agreements.cabinetoffice.gov.uk

Forbo Flooring Systems products are also listed on the following frameworks

Public Sector National Flooring Supplies Framework
(REF: CPC/DF/FLO/05)

Crescent Purchasing Consortium
(REF: CPC/DF/FLO/05)

North West Universities Consortium
(REF: EFM/3098/CPC)

As this list is regularly being added to, please visit www.forbo-flooring.co.uk/government for the latest details.

JUST SOME OF THE PUBLIC SECTOR AND FACILITIES MANAGEMENT **WHO WE WORK WITH**

HM PASSPORT OFFICE

MINISTRY OF DEFENCE

CROWN COMMERCIAL SERVICE

DEPARTMENT FOR WORK & PENSIONS

ROYAL AIR FORCE

ROYAL NAVY

STAFFORDSHIRE POLICE

FINGAL COUNTY COUNCIL

WARWICKSHIRE COUNTY COUNCIL

NEWPORT CITY COUNCIL

FALKIRK COUNCIL

ENVIRONMENT AGENCY

FORBO AT A GLANCE



All your flooring requirements
from one trusted supplier

Linoleum Luxury Vinyl Tiles
Entrance Flooring Systems
Wetroom General Purpose Carpet Tiles
Safety Vinyl Project Vinyl Acoustic Vinyl
Static Control Flooring Flocked Flooring



NO
requirement for attic stock
with batchless ranges from
tessera[®]

All Forbo production
plants are certified
to **ISO 14001**



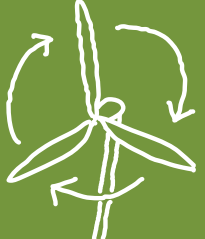
**DOUBLE
DOUBLE**

Nuway Tuftiguard
can be reversible,
effectively doubling its life.

sarlon[®]
Acoustic



offers impact sound reduction from
15dB – 19dB




All Forbo products sold in
the UK are produced using
100%
of electricity from
renewable sources



Here in the UK
**we recycle
installation
waste
back into
Forbo products**

100%
of **westbond**[®]
polyamide carpet trim
is recovered in the UK



All UK sites are certified
to **OHSAS 18001**
and **SA8000**[®]




A well designed entrance
system will prevent dirt and
moisture entering a building,
prolong the life of interior
finishes, reduce cleaning and
repair costs and prevent slips.



Many Coral products use
Econyl[®] yarn which is made
from abandoned fishing nets.



Create your
own bespoke
design with
flotex[®] and
eternal



144
colours in our
westbond[®]
colour range

WHY CHOOSE FORBO FLOORING SYSTEMS?

 <p>marmoleum[®] inhibits the growth of MRSA, C Difficile and other bacteria</p>	 <p>Many Forbo ranges offer the flexibility of modular products</p>	 <p>Nuway Tuftiguard HD is strong enough to cope with high point loads of up to 900Kg/cm².</p>
 <p>For an integrated solution many Forbo ranges are available in both sheet and tile formats</p>	<p>westbond[®]</p>  <p>NO MINIMUM ORDER QUANTITY</p>	<p><i>customise</i> coral[®]</p> <p>Enhance your entrance flooring by using Coral Logo to express your logo or identity.</p>
<p>MADE IN THE UK</p>  <p>5 UK factories and >500 employees</p>	 <p>marmoleum[®] and flotex[®] are approved by Allergy UK</p>	 <p><67% recycled content in all flotex[®] tiles</p>
 <p>allura flex carpet tiles</p> <p>Allura flex loose lay vinyl tiles are ideal for use with carpet tiles</p>	 <p>Nuway Tuftiguard Bamboo prevents strobing in bright entrances and is ideal for use alongside timber interior finishes.</p>	
 <p>marmoleum[®] is made from 97% natural raw materials</p>	<p>step[®] safety vinyl achieves</p>  <p>≥ 36 Wet Pendulum</p>	 <p>allura flex tiles can be easily removed to recycle at the end of their life</p>

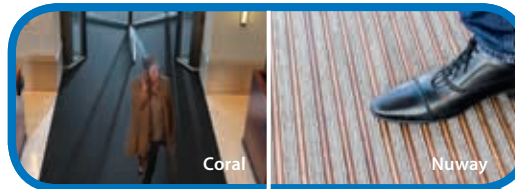
FORBO FLOORING SYSTEMS WORKPLACE SOLUTIONS

Forbo Flooring recognises that workspace design is changing rapidly and we've developed a wide range of floor covering options in order to support this changing landscape but we realise that every workspace has different requirements. The 'journey' shown here is just a guide to how various floor coverings may be used in a workspace. Forbo is at the forefront of this new thinking and, along with our 'Committed to the Health of One programme', we are proud to be a national sponsor of the UK-GBC's 'Better Places for People campaign.'



For more information and inspiration, please visit our website to see examples of how our customers have used Forbo floor coverings in new workspace environments. Visit www.forbo-flooring.co.uk/references

To request samples call 0800 731 2369 or email samples.uk@forbo.com



ENTRANCE

- Reduce slips and trips at entrances
- Protect interior floor finishes

The Forbo solution

coral[®] clean-off textile products that remove moisture and fine dirt.
nuway[®] rigid entrance products for entrances with very heavy traffic.



CREATIVE AREAS

- Design floor to inspire creativity

The Forbo solution

Bespoke Digitally Printed Flotex or Vinyl to create a stand out area of floor design.



FOYER & RECEPTION

- Create that all important first impression
- Ease of cleaning

The Forbo solution

allura luxury vinyl tiles provide opportunities for creative yet low maintenance floor designs.
marmoleum[®] modular the natural floor covering available in tiles and planks.



DRINKS POINT

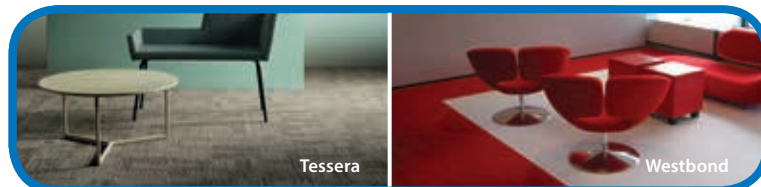
- Ease of cleaning
- Modular format to integrate with main floor area

The Forbo solution

allura flex loose lay vinyl tiles can be laid alongside carpet tiles with no need to build up the subfloor or use a transition strip.



A JOURNEY THROUGH THE OFFICE ENVIRONMENT



Tessera

Westbond

MAIN OFFICE

- Modular flooring, suitable for raised access floors
- Underfoot comfort and acoustics

The Forbo solution

tessera[®] multi-construction carpet tiles.

westbond[®] luxury cut pile carpet tiles.



Allura

DINING AREA

- Slip resistance
- Ease of maintenance and cleaning

The Forbo solution

allura luxury vinyl tiles with R10 slip resistance. Realistic effects and easy to clean.

allura safety the modular safety floor option.



HIGH TRAFFIC AREAS

- Extreme footfall
- Wear from wheeled chairs
- Flocked flooring can stand up to the busiest of offices

The Forbo solution

flotex[®]

flocked flooring is available in sheet or tile format, in literally hundreds of designs.



Flotex



IT ROOM

- IT Servers and other computer equipment may require a static control environment.

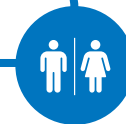
The Forbo solution

colorex[®]

static control flooring is ideal for this area.



Colorex



KITCHENS & TOILETS

- Safety flooring for commercial kitchens
- Safety flooring for washrooms or shower areas

The Forbo solution

step[®]

safety flooring collection includes ranges specifically designed for kitchens and wetroom areas.



Step

ENTRANCES TO EXITS FROM ONE TRUSTED SUPPLIER



Coral Classic 4750 | warm black

coral® nuway®

Did you know that by designing and installing just **six linear metres** of Coral textile matting reduces dirt tracked into your building by up to **94%**? This can also reduce ongoing cleaning and maintenance costs by up to **65%***

Coral Entrance Flooring is also now available in 50cm x 50cm tiles.

For areas of heavier footfall, Nuway tuftiguard has the durability, strength and structural integrity to deliver excellent performance and appearance retention in very heavy traffic locations and where high levels of soil have to be removed from the soles of shoes and wheeltreads.

**Independently tested.*



Nuway Grid

MODULAR FORMATS SAVING TIME AND MONEY

tessera[®] Carpet tiles Mix & match
Minimal disruption **colorex**[®] Static control tiles
allura[®] Safety tiles Wastage reduced
Extended lifespan **flotex**[®] Flocked tiles
allura[®] LVT planks & tiles Increased speed of installation
Replaceable Compatibility with raised access systems
westbond[®] Carpet tiles **marmoleum**[®] Modular
Colour co-ordinated Multiple application areas
allura[®] Flex loose lay **coral**[®] Entrance tiles
Wastage reduced Minimal disruption Extended lifespan
Mix & match

Interior schemes often require a number of flooring products with different performance requirements to work together to create an integrated design scheme. The easiest way to achieve these high performing floor schemes is using modular products i.e. product in tiles and plank format as they offer the following benefits.

- Suitable for **multiple** application **areas** within one project
- **Colour co-ordinated** for maximum design flexibility
- Multiple tile sizes & formats to **mix & match**
- **Increased** speed of installation
- Installation **wastage reduced**
- Damaged or soiled tiles can be **replaced**
- Wear rotation to extend flooring **lifespan**
- Renovation with **minimal disruption**
- **Compatibility** with raised access systems

STOCK ON THE GROUND WAREHOUSE IN WARRINGTON



Allura Flex 1633 | grigio concrete + 1544 | aqua



Forbo has 5 factories here in the UK employing over 500 people in local communities. Stock is kept at our UK Warehouse in Warrington for Key Accounts including the Ministry of Defence.

A dedicated contact in our regional Customer Service teams manages orders placed via your Key Account Manager – delivering a very personal and responsive service to guarantee peace of mind.



Bamber Bridge



Telford



Corntonwood



Kirkcaldy



Ripley



Regional Customer Service teams

SUSTAINABILITY CREATING BETTER ENVIRONMENTS



Marmoleum Modular Shade **t3707, t3717, t3718 & t3722** | tile sizes 50 x 50cm + 50 x 25cm

From how we run our factories to how we choose our raw materials, the way we make our floors is a big part of how we meet our mission to create better environments. We use Green Design principles and the 4 R's: Reduce, Reuse, Recycle and Renew.

Our carpet tile ranges are BREEAM rated and almost all are rated A for office environments. Working together with carpet recycling companies, our aim is to continually improve the environmental profile of our carpet tiles.



All our carpet tiles made in the UK contain more than 50% recycled content.



BRE Approved



Back to the Floor scheme collects installation waste and recycles into new Forbo products.



Forbo UK factories are also SA8000™-certified which recognises that we make products in workplaces that enrich, not denigrate, the livelihoods of people.



Tessera Diffusion **2009** | continental drift

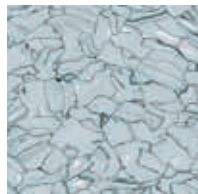
HMS COLLINGWOOD ROYAL NAVY TRAINING FACILITY



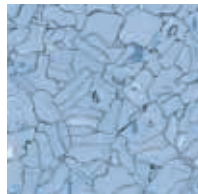
Forbo Flooring Systems saved HMS Collingwood Naval training camp both time and money by supplying its innovative Colorex Plus flooring solution, eliminating the need for expensive sub floor preparation.

"The tiles feature a dovetail connection system, which provides a seamless finish under the surface. It was a straightforward floor covering to install, as a simple 'push and click' motion gives it a solid, durable surface."

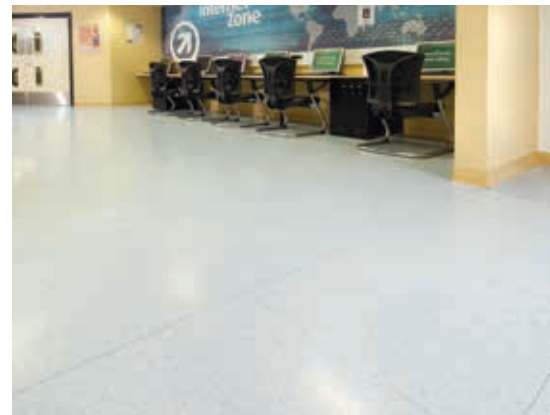
Installation contractor, Les Browning



Colorex Plus 611005 | adula



Colorex Plus 611022 | Niagara



RAF MILDENHALL YOUTH CENTRE



A wide range of Forbo's products have been specified as part of an exciting integrated flooring solution, complete with intricate Aquajet and hand cut designs.

"We have used Forbo before and have always been impressed with the service and delivery. Despite the complex designs that had to be hand cut on site, the whole installation went extremely smoothly."

Mike Hall, Contracts Manager at P and B Flooring



Marmoleum Real **2629** | eiger



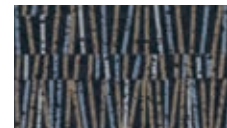
Marmoleum Real **2939** | black



Marmoleum Real **3127** | bleeckerstreet



Marmoleum Fresco **3858** | barbados



Flotex Vision Vector **540017** | aubergine

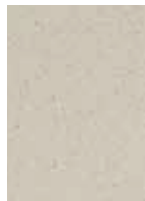
STAFFORDSHIRE POLICE HQ CONFERENCE & AMENITIES BUILDING



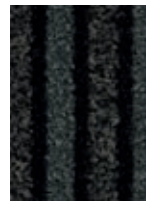
An integrated approach using various products including Allura luxury vinyl tiles (LVT), Tessera carpet tiles, Surestep safety vinyl and Coral entrance flooring systems.

"Forbo Flooring was used as part of the design for the internal areas of our new conference and amenities building within Staffordshire Police HQ. It was chosen by our designer, to provide the modern look and feel we were trying to achieve."

Simon Bryan Facilities Manager, Staffordshire Police



Allura **c68002** | caribbean sand



Coral Duo **9721** | dark steel



Allura **w60085** | weathered rustic pine



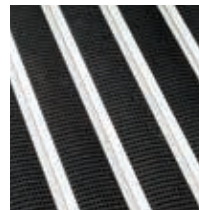
WARWICKSHIRE COUNTY COUNCIL ENTRANCE FLOORING



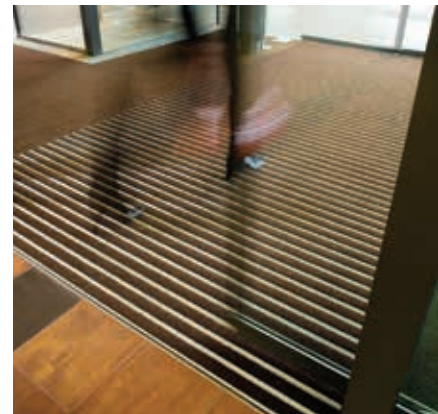
Nuway Grid is a single-sided entrance system, ideal for areas subject to high levels of pedestrian traffic and a high moisture or dust content.

“Three key factors influenced what entrance matting product we used in the courtyard and reception. It had to be resilient and hard wearing, provide a safe environment and prevent retained moisture and dirt from being brought inside. Finally, design influenced the chosen colourway of the matting. We chose a chocolate brown to reflect the slabs outside the entrance and maintain the neutral internal colour scheme of cream, brown and terracotta shades.”

Nicola Slater, Paragon Interiors



Nuway Grid



ONE NEWPORT INFORMATION STATION ENTRANCE



As part of a bold vision for the City of Newport's new public service centre; Information Station, a range of Forbo

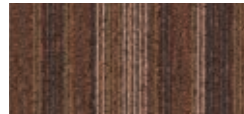
floor coverings was specified to contribute to the vibrant and inviting environment.

"Strong uplifting colours were chosen to help encourage a positive environment – there was definitely a sense of design with strict avoidance of magnolia, creams, and institutional colours in general. It was our aspiration that all visitors would have a good experience and we like to believe we have been successful."

Andrew Herrington, Project Designer, Newport City Council



Coral Logo bespoke



Tessera Barcode **315** | branch line



Tessera Alignment **214** | nocturn



DONABATE LIBRARY – FINGAL COUNTY COUNCIL

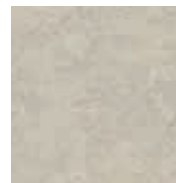


"We always reach for the Forbo catalogues to get some inspiration on finishes and colours when designing our projects, there is such a wide choice to suit all areas. We received great support from Forbo in selecting the final products and help for the flooring contractor with the finishing details for laying and fixing. We are delighted with the high quality of the Forbo floor finishes which are easy to clean and very hardwearing."

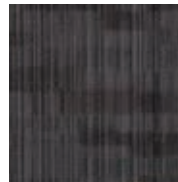
Annette Sweeney,
Architect Fingal County Council



Westbond **9488** | dove



Marmoleum Modular
T3136 | concrete



Tessera Alignment
214 | nocturn



Sarlon Topography
433910 | white



FALKIRK COUNCIL THE RED ROSE HUB



Falkirk Council

A universally attractive carpet tile suitable for heavy traffic environments, Tessera Format boasts a high castor chair rating, making it an ideal and cost-effective solution for busy offices large and small.

"Presenting a positive image is vital for a council as we must be seen to be a modern, forward-thinking establishment that focuses on meeting the needs of the community we serve. Tessera Format was the ideal flooring solution in an area that demanded a hard wearing flooring that was also cost effective."

Lynne Seaton, Falkirk District Council



Tessera Format 608 |
blue Monday



EUREKA – THE NATIONAL CHILDREN’S MUSEUM



Eureka! The National Children's Museum recently redeveloped its largest gallery to provide a playful and open environment for its energetic young visitors. Created using the water cutting technology Aquajet, Forbo's Marmoleum was specified in a large variety of shades to inject a shot of playful colour into the gallery's floor.

"We have around 275,000 visitors a year, so we knew we required an imaginative product that offered the highest quality in terms of design and durability. Forbo's Marmoleum was perfect for this project, as it enabled us to be creative with the flooring, as well as meeting our practical hygiene and cleaning requirements."

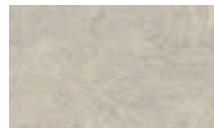
Tudor Gwynn, Eureka's Projects Director



Marmoleum 3230 | blush



Marmoleum 3139 | lava



Marmoleum 3136 | concrete



Marmoleum 3224 | chartreuse



Marmoleum 3223 | emerald

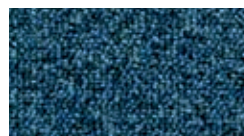
20/20 LIVERPOOL CROXTETH SCHOOL, LIVERPOOL



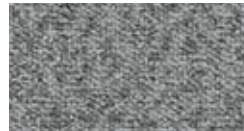
Forbo's Tessera Teviot carpet tiles were chosen to provide contrasting colour and pattern to create visual markers, highlighting activity zones such as workstations, play areas and study spaces.

"Our new school is excellent. The open spaces have been greatly enhanced by the flooring designs – especially the islands that were created. We have noticed an improvement in the pupils' behaviour and desire to attend school driving absenteeism down."

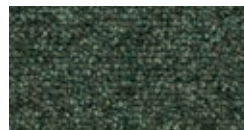
Karen McBride, Head Teacher at Croxteth Community Primary School



Tessera Teviot **127** | deep ocean



Tessera Teviot **376** | mercury



Tessera Teviot **386** | foliage



BALFOUR BEATTY NHS FIFE, VICTORIA HOSPITAL



Balfour Beatty

Forbo's Marmoleum was specified in all of the hospital corridors, wards, theatres and general clinical areas. Its natural bacteriostatic properties, give ultimate protection against the bacteria MRSA and E Coli.

"We specified Marmoleum because it is a sustainable material, with a wide range of contemporary colours which we coordinated with the overall interior design theme. The technical department at Forbo provided very useful assistance and advice on a range of issues during the specification and installation phases, both promptly and comprehensively."

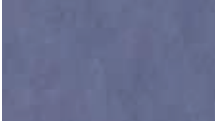
Malcolm Inglis, Architect at BDP



Marmoleum Real 3137 | slate grey



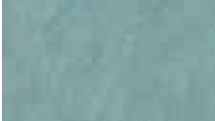
Marmoleum Real 3136 | concrete



Marmoleum Real 3221 | hyacinth



Marmoleum Real 3225 | dandelion



Marmoleum Real 3219 | spa



Surestep Original 171732 | storm



Onyx FR Wall 23537 | pearl

BIM IS HERE TO STAY

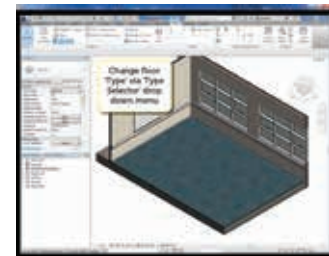


As an early adopter of BIM modelling, Forbo now has a comprehensive offering of high quality BIM objects across our floor covering portfolio available to download for free.

Forbo's objects are supplied with colourways embedded (unlike white objects which require users to overlay an additional CAD file) and contain all key technical data and green building properties as well as links to installation information, product web pages and download sections. Download your most commonly used objects and create your own library for ease of specification.

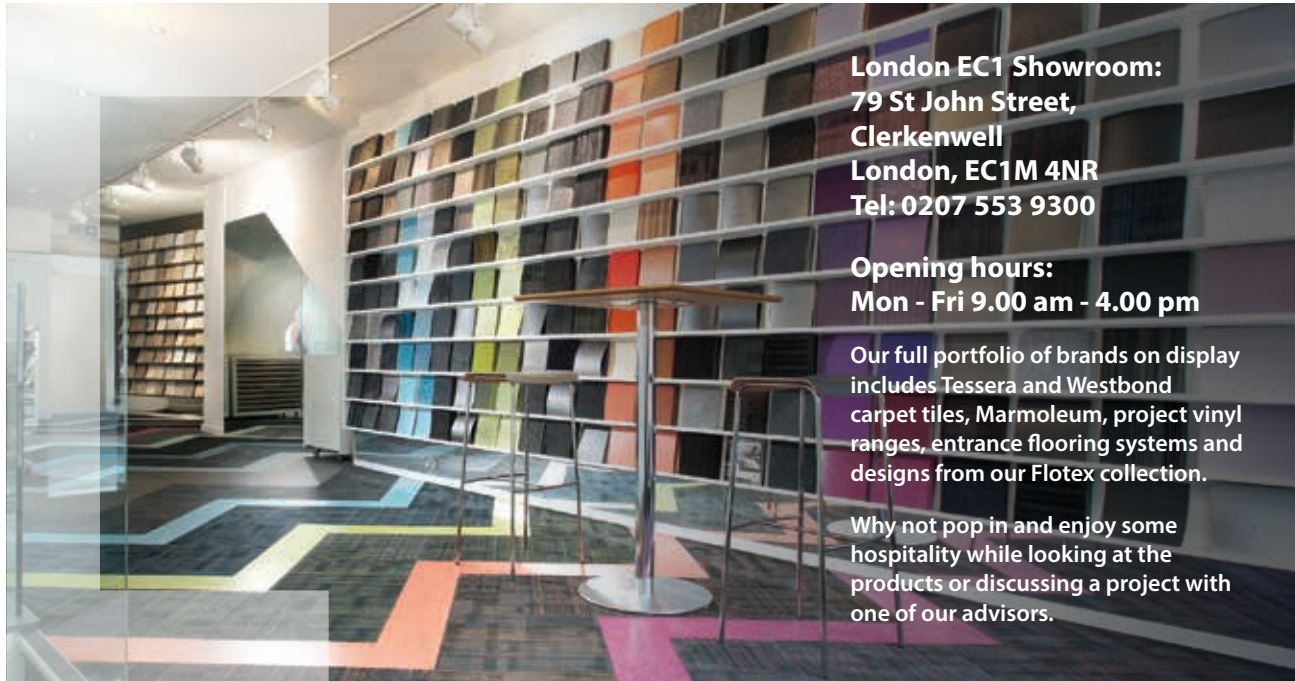
Forbo's rigid entrance system, Nuway, has recently been added to BIMstore as a custom parametric object, whereby users can build up the construction of the desired mat themselves. This means Forbo's BIM objects cover everything from Entrances to Exits providing you with the opportunity to specify a fully integrated interior.

To download Forbo Flooring BIM objects or watch our video on how to use Forbo Flooring BIM Objects, visit www.forbo-flooring.co.uk/BIM



Images are computer rendered.

DO YOU WANT TO **FIND OUT MORE?**



London EC1 Showroom:
79 St John Street,
Clerkenwell
London, EC1M 4NR
Tel: 0207 553 9300

Opening hours:
Mon - Fri 9.00 am - 4.00 pm

Our full portfolio of brands on display includes Tessera and Westbond carpet tiles, Marmoleum, project vinyl ranges, entrance flooring systems and designs from our Flotex collection.

Why not pop in and enjoy some hospitality while looking at the products or discussing a project with one of our advisors.

For further information on any of the products in this brochure, please don't hesitate to contact us on the number below and we'll be pleased to send you additional literature and samples as required.

Samples:

0800 731 2369 or online at
www.forbo-flooring.co.uk
samples.uk@forbo.com

Email:

info.governmentspace.uk@forbo.com

Downloads:

www.forbo-flooring.co.uk/downloads

COME AND SEE US

Forbo is exhibiting at the following exhibitions in 2016



Public Sector Show

28th June 2016 | ExCeL | London
www.psshow.co.uk | #PSS2016

Visit Forbo at Stand 540

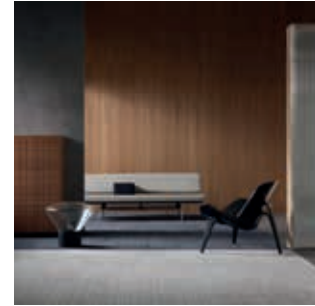
CPC Conference

Birmingham, May 2016

Public Sector and Estates Management Show

London, December 2016

Forbo Flooring Systems is part of the Forbo Group, a global leader in flooring and movement systems, and offers a full range of flooring products for commercial and affordable housing and new build markets. High quality linoleum, vinyl, textile, flocked and entrance flooring products combine functionality, colour and design, offering total flooring solutions for any environment.



FRONT COVER IMAGE
Tessera Alignment | 218 luminosity + 214 nocturne. Allura Flex | 1632 natural concrete

UK

Forbo Flooring UK Limited
High Holborn Road
Ripley
Derbyshire DE5 3NT

London EC1 showroom

79 St John Street, Clerkenwell
London EC1M 4NR
Tel: 0207 553 9300

For commercial enquiries:

If calling from the North,
Midlands, London & South East
Tel: 0800 0282 162
Fax: 01772 646 912

If calling from Scotland & South West
Tel: 0800 0935 258
Fax: 01592 643 999

Nuway enquiries:

Tel: 01773 740 688
Fax: 01773 740 640

Residential enquiries:

Tel: 0800 0935 846
Fax: 01592 643 999
Email: info.flooring.uk@forbo.com
www.forbo-flooring.co.uk

Samples:

Tel: 0800 731 2369
samples.uk@forbo.com

Ireland

Forbo Ireland Ltd
2 Deansgrange Business Park
Blackrock
Co Dublin

Tel: 00353 1 2898 898
Fax: 00353 1 2898 177
Email: info.ireland@forbo.com
www.forbo-flooring.ie

Registered office:

Forbo Flooring UK Limited
High Holborn Road
Ripley
Derbyshire DE5 3NT
Registered in England 9200318



This programme expresses our ambition to design and manufacture floor coverings that benefit every individual by helping to provide safe, hygienic and comfortable living and working environments.



*Generic BREEAM rating

