

FLOOR COVERING SOLUTIONS GOVERNMENT SPACE

Crown
Commercial
Service
Supplier

RM3747



creating better environments

forbo
FLOORING SYSTEMS

FORBO FLOORING SYSTEMS

YOUR PERFECT FLOOR COVERING PARTNER FOR PUBLIC SECTOR BUILDINGS



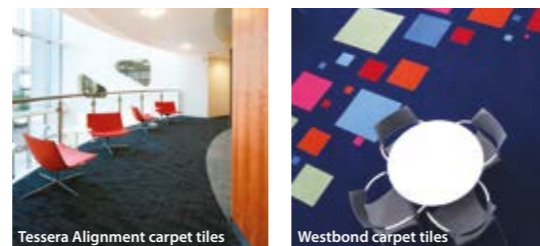
Forbo professional partners seeking to simplify the floor covering selection process and to lighten the project management burden, ultimately helping clients to meet continually challenging timeframes and project budgets.

Forbo is positioned to work in such a time and cost effective way with partners as a result of:

- Manufacturing in the UK and having stock on the ground
- Creating Better Environments which means being able to offer BREEAM, LEED & SKA rated products
- Designing and producing modular formats across a number of ranges that deliver cost savings and random lay tiles which achieve <2% installation waste
- Covering all project flooring requirements – from entrances to exits
- One trusted supplier, delivered in one order with one invoice
- Providing a Key Account Manager to answer your questions, solve your problems and deliver on promises

WHY CHOOSE FORBO FOR WORKSPACES?

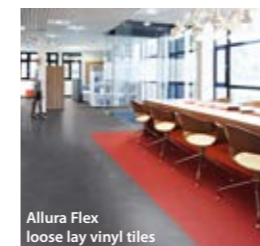
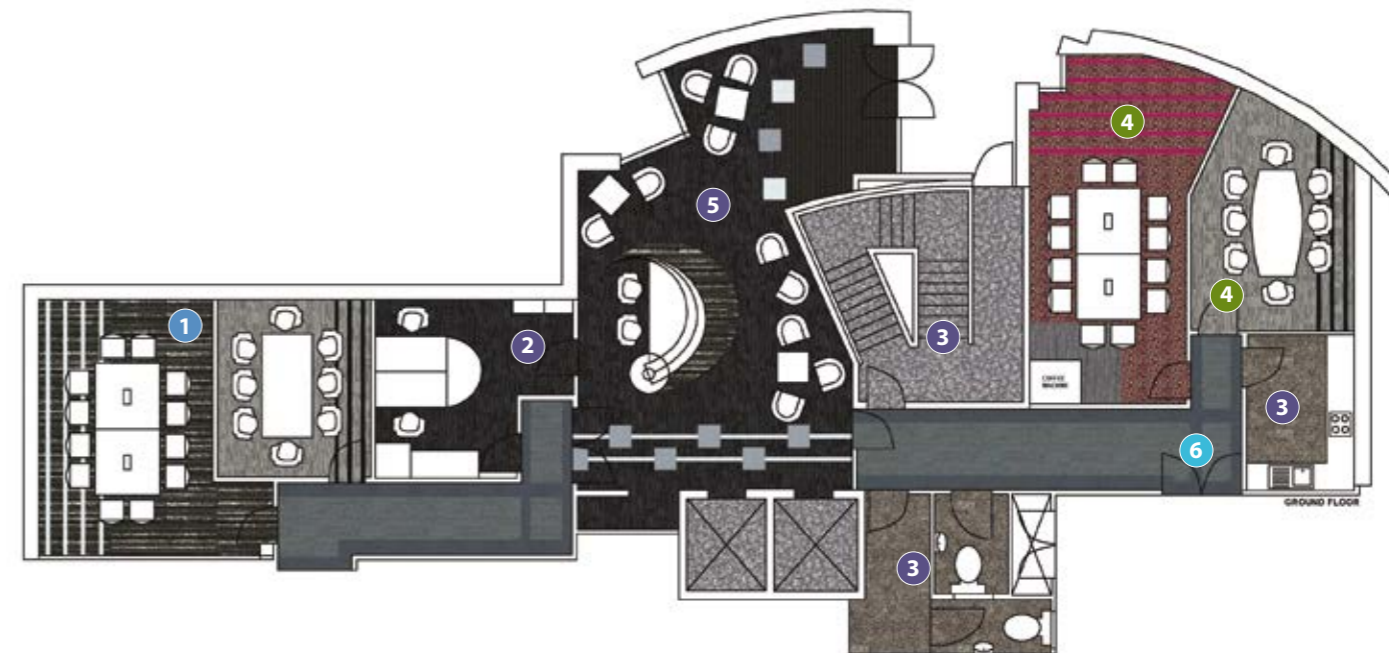
We offer floor coverings in sheet and tile formats, textile and resilient constructions and heavy contract and specialist functionality to ensure that Forbo floor coverings suit every type of workspace, from the most dynamic and vibrant interior spaces through to more subdued and formal surroundings.



1 Tessera & Westbond

Tessera offers a wide collection of tufted carpet tiles in various constructions and textures designed to deliver specific performance and aesthetic benefits.

With an almost infinite range of colours and no minimum order quantity, Westbond fusion bonded carpet tiles offer the ultimate in bespoke, luxurious flooring.



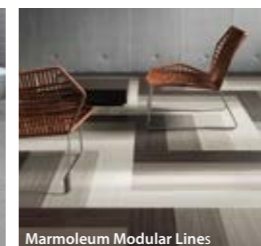
2 Allura Flex

A collection of high design, high quality, heterogeneous vinyl tiles which are adhered with tackifier, making them ideal for raised access floors.



3 Step Safety Vinyl

Step safety vinyl can be used where slip resistance is a key consideration for safe working and in public environments. safestep R11 and R12 floors offer the required level of confidence.



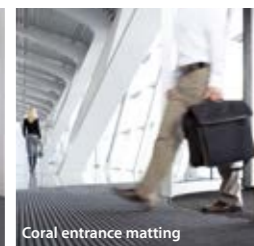
4 Marmoleum Modular

By combining the modular format of tiles with the environmental profile and colour range of Marmoleum, Marmoleum Modular offers the best of all worlds. Available in a range of tile and plank sizes.



5 Allura

A vibrant and versatile range of luxury vinyl planks and tiles designed and produced in Europe to deliver a stand out collection that offers differentiation in style and performance.



6 Coral

The market leading textile clean off entrance flooring brand stops up to 90% of dirt and moisture being tracked into a building, thereby helping to prevent slips and reduces cleaning bills by up to 65%. Now also available in 50 x 50cm tiles.

KEY ACCOUNT DEDICATED SUPPORT



Throughout the duration of your programme, your Forbo Key Account Manager serves as your single port of call – supported by his or her dedicated contact in our Customer Services Team. We believe that this approach saves you time, eliminates hassle and uncertainty and ensures consistency and reliability no matter how complex your programme.

Forbo's Plan Design Service can take your selected products and prepare an integrated floor plan layout meeting your performance requirements by application area whilst colour co-ordinating across different product categories.



PUBLIC SECTOR AND FACILITIES MANAGEMENT WHO WE WORK WITH



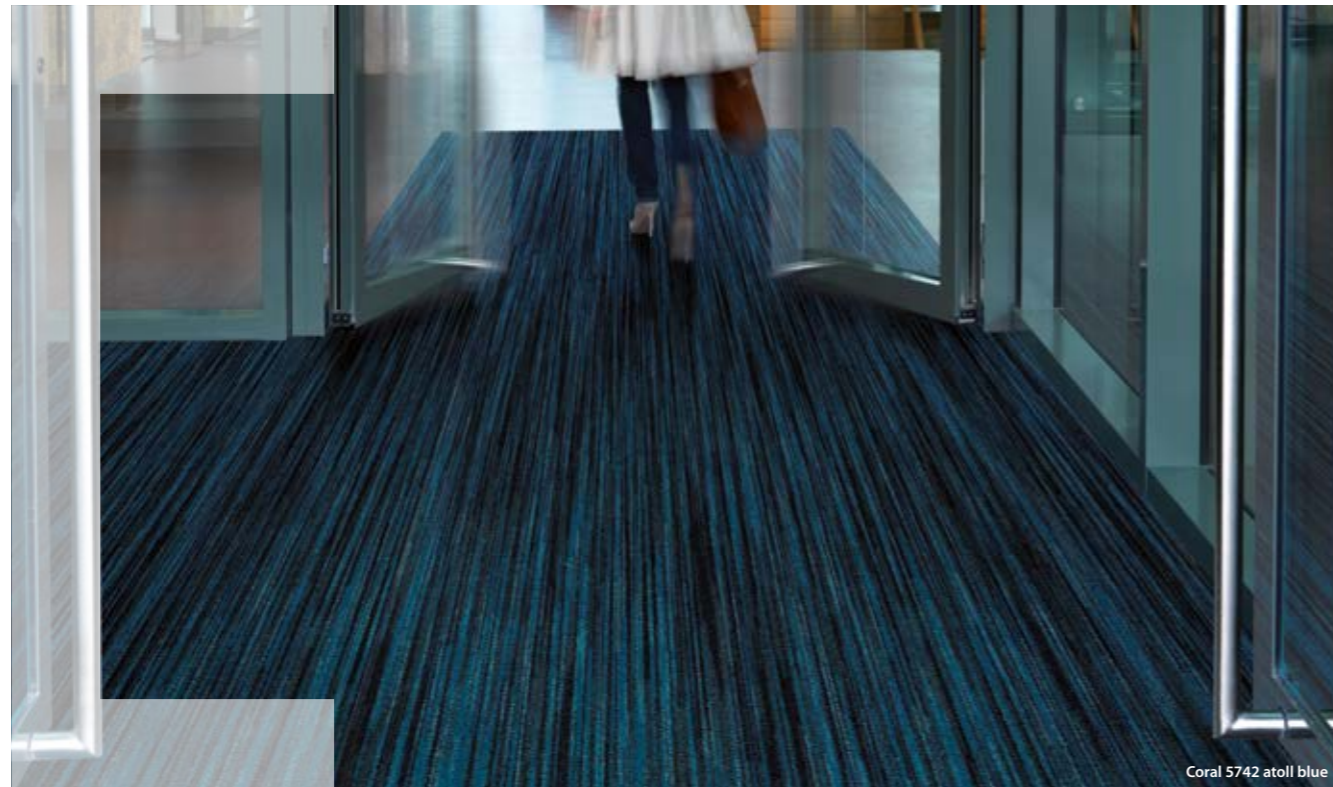
WHY CHOOSE TESSERA AND WESTBOND?

<p>tessera® teviot has sold over 10 million m²</p>		<p>westbond®</p> <p>NO MINIMUM ORDER QUANTITY</p>	<p>westbond® Flex Creator allows you to design a bespoke colourway</p>  <p>↓</p> 
<p>create space space create the tessera® create space collection allows colour connections across ranges</p>	 <p>westbond® colours are stocked to allow for quick delivery</p>	<p>both tessera® and westbond® carpet tiles are produced in the UK</p> 	<p>at least 70% recycled content in the backing of westbond® carpet tiles</p>
<p>customise tessera® carpet tiles with a logo or design</p>		<p>50%+ recycled content in all tessera® carpet tiles made in the UK</p>	<p>100% of tessera® trim is recovered in the UK</p>
<p>100% of tessera® trim is recovered in the UK</p>	<p>THE CAMPAIGN FOR WOOL Patron: HRH The Prince of Wales westbond® natural carpet tiles are made from undyed wool from British sheep</p> 	<p>with a logo or design</p>	<p>100% of westbond® polyamide carpet trim is recycled in the UK</p> 

Forbo Carpet Tiles are renowned for their aesthetic styling and outstanding performance in the most demanding, heavy traffic environments.

<p>tessera® tiles are available with SoftBac backing for better underfoot comfort and improved acoustic and thermal performance</p> 	<p>tessera® is available in 3 different constructions</p>  <p>Loop pile</p>  <p>Random lay. batchless</p>  <p>Cut and loop</p>	<p>NO requirement for attic stock with batchless ranges from tessera®</p>
	<p>tessera® carpet tiles are available with magnetic backing</p> 	<p>tessera® installation cut-offs can be processed back into new carpet tiles</p>  <p>Forbo back to the floor recycling Forbo's flooring</p>
<p>tessera® random lay carpet tiles reduce installation waste to < 2%</p> 		
<p>the tessera® range pioneered the cut and loop pile construction of carpet tiles</p>	<p>BESPOKE both tessera® & westbond® allow you to create bespoke carpet tiles</p>	<p>144 colours in our westbond® colour range</p>

ENTRANCES TO EXITS **FROM ONE TRUSTED SUPPLIER**



Coral 5742 atoll blue

coral® nuway®

Did you know that by designing and installing just **six metres** of Coral textile matting reduces dirt tracked into your building by up to **94%***? This can also reduce ongoing cleaning and maintenance costs by up to **65%***.

Coral Entrance Flooring is also now available in 50cm x 50cm tiles.

For areas of heavier footfall Nuway tuftiguard has the durability, strength and structural integrity to deliver excellent performance and appearance retention in very heavy traffic locations and where high levels of soil have to be removed from the soles of shoes and wheeltreads.

* independently tested.



Nuway Grid

MODULAR FORMATS **SAVING TIME AND MONEY**



Marmoleum Modular Lines t5218, t5231, t3573, t5232 | tile size 100 x 25cm

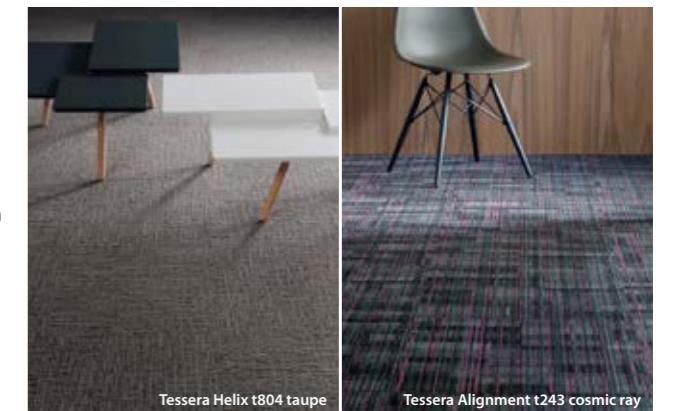
There is variety of tile and plank sizes to choose from across many of our ranges.



marmoleum® modular tessera®

Marmoleum Modular is a collection with a twist offering over 100 products that enable you to create individual, inspiring and high performance flooring designs. The collection includes four new tile formats, ranging from extra-large (75x50cm) to small (25x25cm) and in between, the medium format square and rectangular tiles (50x50cm and 50x25cm respectively) complement the offer.

Tessera carpet tiles are designed to maintain their good looks in the most demanding heavy traffic areas of buildings such as corridors and reception areas. Tile size 50 x 50cm with other sizes available for special orders.



Tessera Helix t804 taupe

Tessera Alignment t243 cosmic ray

STOCK ON THE GROUND WAREHOUSE IN WARRINGTON



Allura Flex 1633 grigio concrete + 1544 aqua

SUSTAINABILITY CREATING BETTER ENVIRONMENTS



Marmoleum Modular Shade t3707, t3717, t3718 & t3722 | tile sizes 50 x 50cm + 50 x 25cm



Forbo has 5 factories here in the UK employing 567 people in local communities. Stock is kept at our UK Warehouse in Warrington for Key Accounts including the Ministry of Defence.

A dedicated contact in our regional Customer Service teams manages orders placed via your Key Account Manager – delivering a very personal and responsive service to guarantee peace of mind.



Bamber Bridge

Telford

Corntonwood

Kirkcaldy

Ripley

Regional Customer Service teams

From how we run our factories to how we choose our raw materials, the way we make our floors is a big part of how we meet our mission to create better environments. We use Green Design principles and the 4 R's: Reduce, Reuse, Recycle and Renew.

Our carpet tile ranges are BREEAM rated A or A+. Working together with CRUK our aim is to continually improve the profile of our carpet tiles.



Our carpet tiles are made in the UK and contain more than 50% recycled content.



BRE Approved



Back to the floor scheme



Forbo UK factories are also SA8000-certified which recognises that we make products in workplaces that enrich, not denigrate, the livelihoods of people.



Tessera Diffusion 160115

HMS COLLINGWOOD ROYAL NAVY TRAINING FACILITY



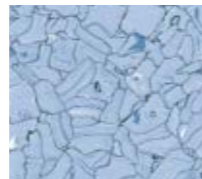
Forbo Flooring Systems has saved HMS Collingwood Naval training camp both time and money by supplying its innovative ColoRex Plus flooring solution, eliminating the need for expensive sub floor preparation.

"The tiles feature a dovetail connection system, which provides a seamless finish under the surface. It was a straightforward floorcovering to install, as a simple 'push and click' motion gives it a solid, durable surface."

Installation contractor, Les Browning



Colorex Plus adula 611005



Colorex Plus Niagara 611022



RAF MILDENHALL YOUTH CENTRE



A wide range of Forbo's products have been specified as part of an exciting integrated flooring solution, complete with intricate Aquajet and hand cut designs.

"We have used Forbo before and have always been impressed with the service and delivery. Despite the complex designs that had to be hand cut on site, the whole installation went extremely smoothly."

Mike Hall, Contracts Manager at P and B Flooring



Marmoleum Real Eiger 2629



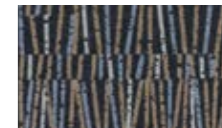
Marmoleum Real black 2939



Marmoleum Real Bleekerstreet 3127



Marmoleum Fresco Barbados 3858



Flotex HD Vector aubergine 540017

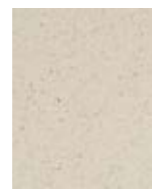
STAFFORD POLICE HQ CONFERENCE & AMENITIES BUILDING



An integrated approach using various products including Allura luxury vinyl tiles (LVT), Tessera carpet tiles, SureStep safety vinyl and Coral entrance flooring systems.

"Forbo Flooring was used as part of the design for the internal areas of our new conference and amenities building within Staffordshire Police HQ. It was chosen by our designer, to provide the modern look and feel we were trying to achieve."

Simon Bryan Facilities Manager, Staffordshire Police



Allura Caribbean sand c68002



Coral Duo grey 9801



Allura Weathered rustic pine w60085



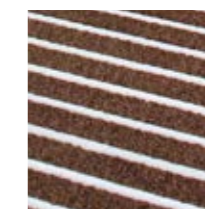
WARWICKSHIRE COUNTY COUNCIL ENTRANCE FLOORING



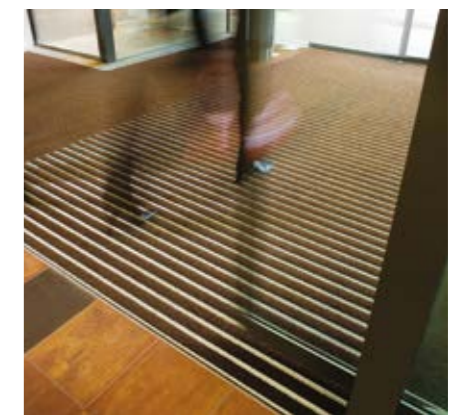
Nuway Grid is a single-sided entrance system, ideal for areas subject to high levels of pedestrian traffic and a high moisture or dust content.

"Three key factors influenced what entrance matting product we used in the courtyard and reception. It had to be resilient and hard wearing, provide a safe environment and prevent retained moisture and dirt from being brought inside. Finally, design influenced the chosen colourway of the matting. We chose a chocolate brown to reflect the slabs outside the entrance and maintain the neutral internal colour scheme of cream, brown and terracotta shades."

Nicola Slater, Paragon Interiors



Nuway



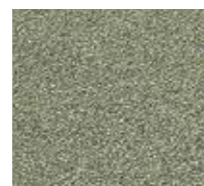
LANCASHIRE COUNTY COUNCIL CARRONBANK HOUSE



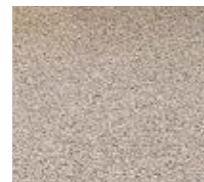
We supplied over 4000m² of hardwearing low level loop pile Teviot carpet tiles in a wide range of colourways for the prestigious four storey building.

"We wanted to set a new standard as far as local authority premises were concerned. I'm satisfied that we have achieved this objective. When it came to the floorcoverings, Tessera Teviot has proved to be an attractive, practical, versatile and importantly, a very affordable solution to our needs."

Jane Beckford, Building Project Manager



Tessera Teviot bespoke colour



Tessera Teviot bespoke colour



ONE NEWPORT INFORMATION STATION ENTRANCE



As part of a bold vision for the City of Newport's new public service centre; Information Station, a range of Forbo

floor coverings was specified to contribute to the vibrant and inviting environment.

"Strong uplifting colours were chosen to help encourage a positive environment – there was definitely a sense of design with strict avoidance of magnolia, creams, and institutional colours in general. It was our aspiration that all visitors would have a good experience and we like to believe we have been successful."

Andrew Herrington, Project Designer, Newport City Council



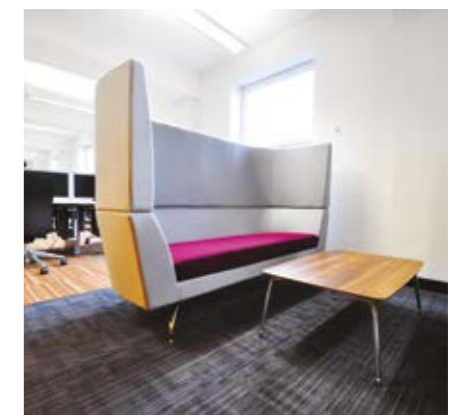
Coral Logo bespoke



Tessera Barcode branchline 315



Tessera Alignment nocturn 214



FALKIRK COUNCIL THE RED ROSE HUB



A universally attractive carpet tile suitable for heavy traffic environments, Tessera Format boasts a high castor chair rating, making it an ideal and cost-effective solution for busy offices large and small.

"Presenting a positive image is vital for a council as we must be seen to be a modern, forward-thinking establishment that focuses on meeting the needs of the community we serve. Tessera Format was the ideal flooring solution in an area that demanded a hard wearing flooring that was also cost effective."

Lynne Seaton, Falkirk District Council



Tessera Format
blue Monday 608



JONES LANG LASALLE OFFICE REFURBISHMENT



The DNA collection, developed in collaboration with Sottsass Associati of Milan has helped create a truly individual look across this large refurbishment. The client specified 1750m² in charcoal grey, delivering on their brief of a sophisticated, unique flooring scheme in the largely open plan area.

"Being laid broadloom, the collection keeps the look simple but strong over a large area."

Simon Malone, Director of Project & Development Services



DNA 944943



20/20 LIVERPOOL CROXTETH SCHOOL, LIVERPOOL



Forbo's Tessera Teviot carpet tiles were chosen to provide contrasting colour and pattern to create visual markers, highlighting activity zones such as workstations, play areas and study spaces.

"Our new school is excellent. The open spaces have been greatly enhanced by the flooring designs – especially the islands that were created. We have noticed an improvement in the pupils' behaviour and desire to attend school driving absenteeism down."

Karen McBride, Head Teacher at Croxteth Community Primary School



Tessera Teviot 127 deep ocean



Tessera Teviot 107 soapstone



Tessera Teviot 133 pine



BALFOUR BEATTY NHS FIFE, VICTORIA HOSPITAL



Balfour Beatty

Forbo's Marmoleum was specified in all of the hospital corridors, wards, theatres and general clinical areas. Its natural bacteriostatic properties, give ultimate protection against the bacteria MRSA and E Coli.

"We specified linoleum because it is a sustainable material, with a wide range of contemporary colours which we coordinated with the overall interior design theme. The technical department at Forbo provided very useful assistance and advice on a range of issues during the specification and installation phases, both promptly and comprehensively."

Malcolm Inglis, Architect at BDP



Marmoleum Real slate grey 3137



Marmoleum Real concrete 3136



Marmoleum Real hyacinth 3221



Marmoleum Real dandelion 3225



Marmoleum Real spa 3219



Surestep Original storm 171732



Onyx Wall Vinyl spa 23538

BIM IS HERE TO STAY



As an early adopter of BIM modelling, Forbo now has a comprehensive offering of high quality BIM objects across our floor covering portfolio available to download for free.

Forbo's objects are supplied with colourways embedded (unlike white objects which require users to overlay an additional CAD file) and contain all key technical data and green building properties as well as links to installation information, product web pages and download sections. Download your most commonly used objects and create your own library for ease of specification.

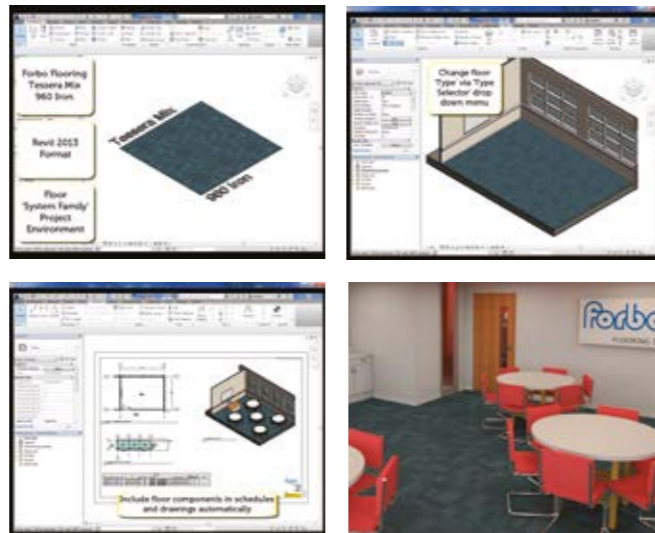
Forbo's rigid entrance system, Nuway, has recently been added to BIMstore as a custom parametric object, whereby users can build up the construction of the desired mat themselves. This means Forbo's BIM objects cover everything from Entrances to Exits providing you with the opportunity to specify a fully integrated interior.

To see how to use Forbo Flooring BIM objects please visit:

<https://youtu.be/hMt7qbySECO>

To download Forbo Flooring BIM objects visit:

www.forbo-flooring.co.uk/BIM



Images are computer rendered.

FROM OUR FLOOR TO YOUR DOOR



Sales Offices

London EC1 Showroom

Kirkcaldy

Dublin

Bamber Bridge

Ripley

UK Manufacturing Plants

Bamber Bridge

Cortonwood

Kirkcaldy

Ripley

Telford

Tessera Carpet Tiles

Westbond Carpet Tiles

Linoleum: Marmoleum Modular;
Linoflex

Flotex

Nuway Entrance Flooring Systems



For more information visit
[www.forbo-flooring.co.uk/
publicsector](http://www.forbo-flooring.co.uk/publicsector)

or contact
Martin Cotterill on
0781 796 2151

or
martin.cotterill@forbo.com

Forbo Flooring Systems is part of the Forbo Group, a global leader in flooring and movement systems, and offers a full range of flooring products for commercial and affordable housing and new build markets. High quality linoleum, vinyl, textile, flocced and entrance flooring products combine functionality, colour and design, offering total flooring solutions for any environment.

UK

Forbo Flooring UK Limited
High Holborn Road
Ripley
Derbyshire DE5 3NT

London EC1 showroom

79 St John Street, Clerkenwell
London EC1M 4NR
Tel: 0207 553 9300

For commercial enquiries:

If calling from the North,
Midlands, London & South East
Tel: 0800 0282 162
Fax: 01772 646 912

If calling from Scotland & South West

Tel: 0800 0935 258
Fax: 01592 643 999

Nuway enquiries:

Tel: 01773 740 688
Fax: 01773 740 640

Residential enquiries:

Tel: 0800 0935 846
Fax: 01592 643 999

Email: info.flooring.uk@forbo.com
www.forbo-flooring.co.uk

Samples:

Tel: 0800 731 2369

Ireland

Forbo Ireland Ltd
2 Deansgrange Business Park
Blackrock
Co Dublin

Tel: 00353 1 2898 898
Fax: 00353 1 2898 177
Email: info.ireland@forbo.com
www.forbo-flooring.ie

Registered office:

Forbo Flooring UK Limited
High Holborn Road
Ripley
Derbyshire DE5 3NT
Registered in England 9200318



FRONT COVER IMAGE
Tessera Alignment | 218 luminosity + 214 nocturne. Allura Flex | 1632 natural concrete

BRGVTSFACE0615 SAPXXXXXXXXXX

creating better environments



*Generic BREEAM rating



Forbo
FLOORING SYSTEMS