

Flocked Carpet Flooring

flotex[®] prairies



10" x 40" approx.
(25 cm x 100 cm)

creating better environments

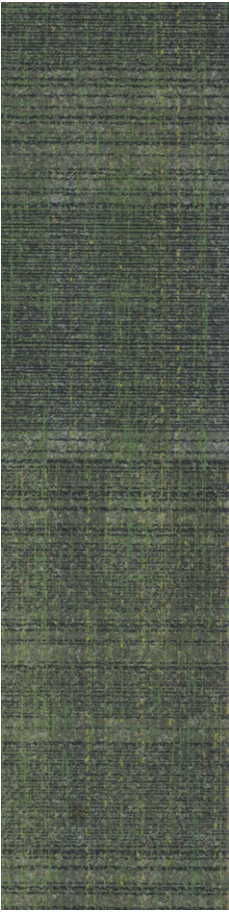
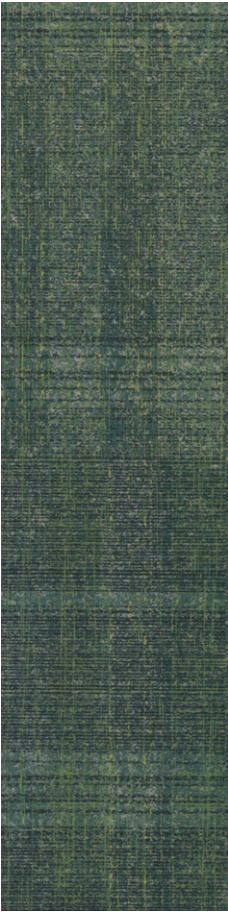
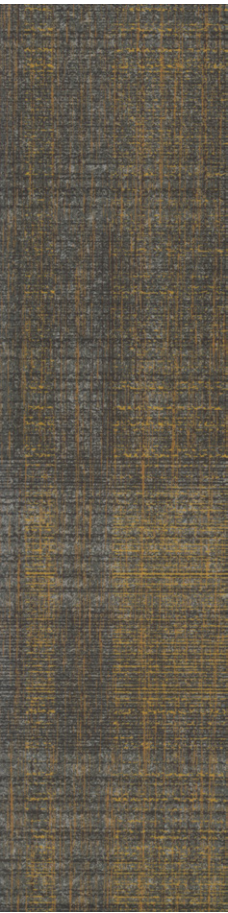
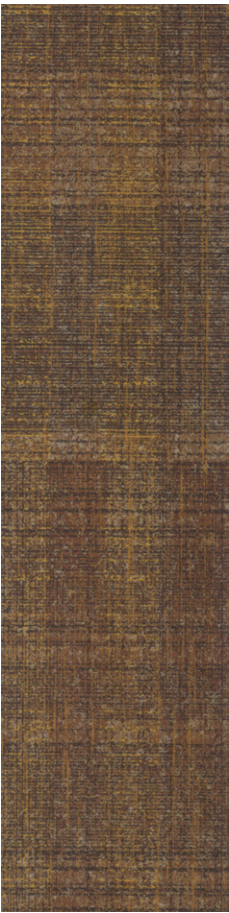
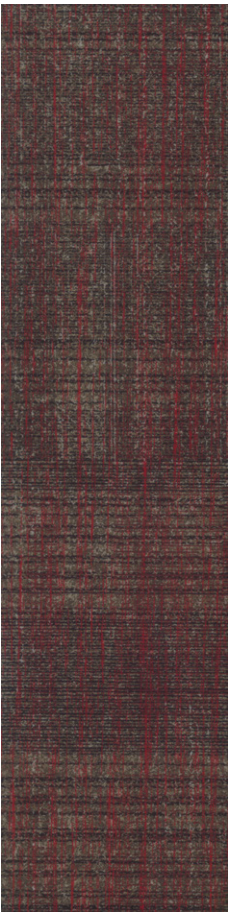
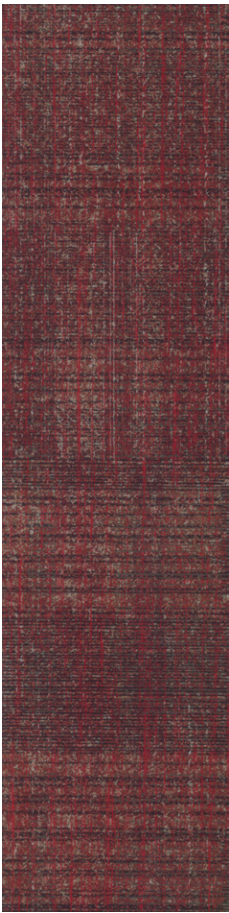
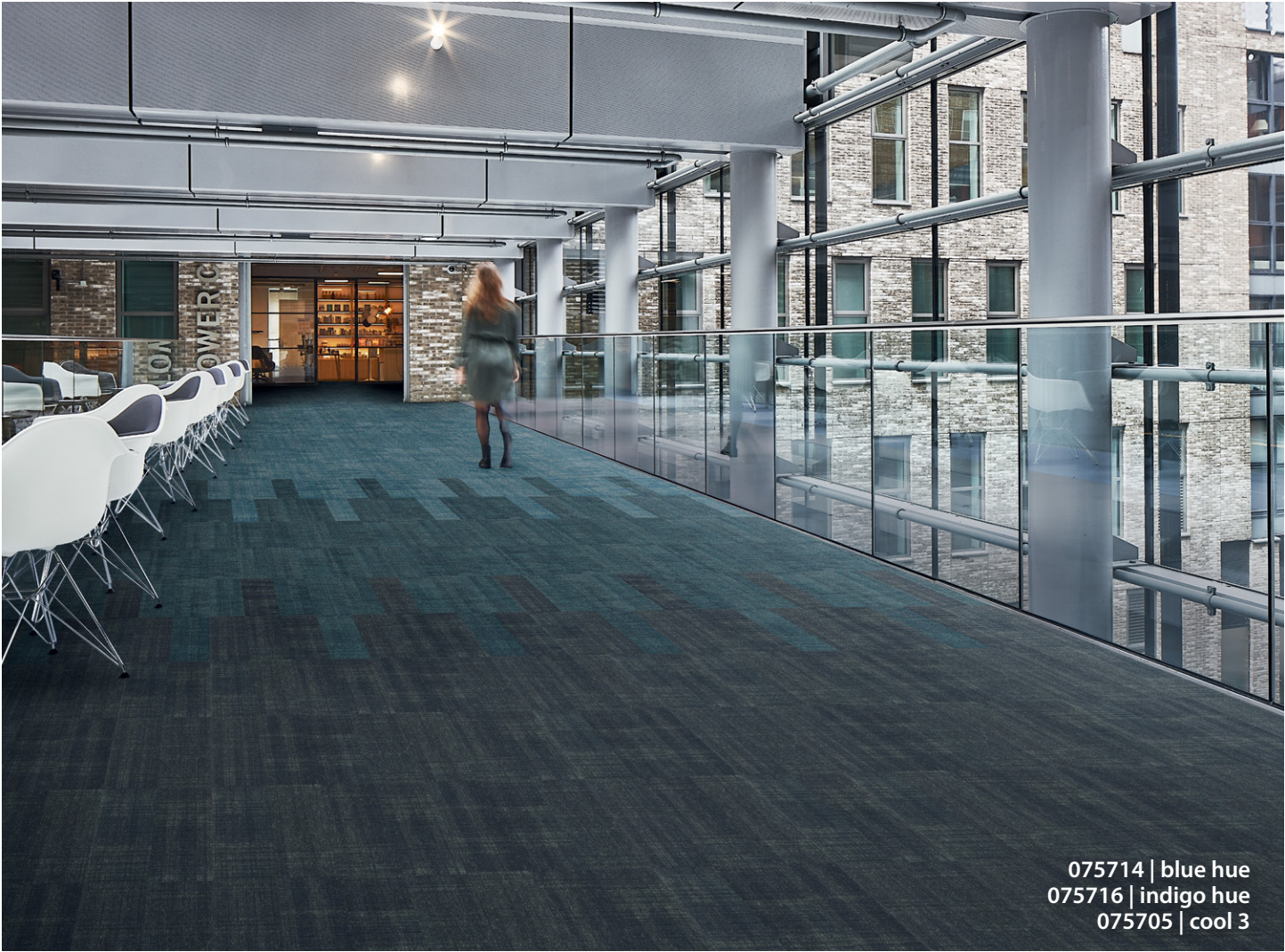


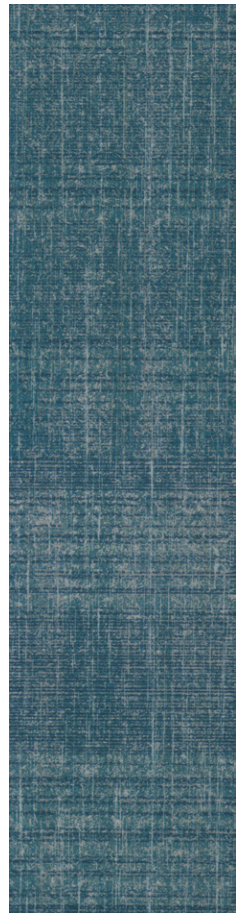
FLOORING SYSTEMS

flotex® prairies

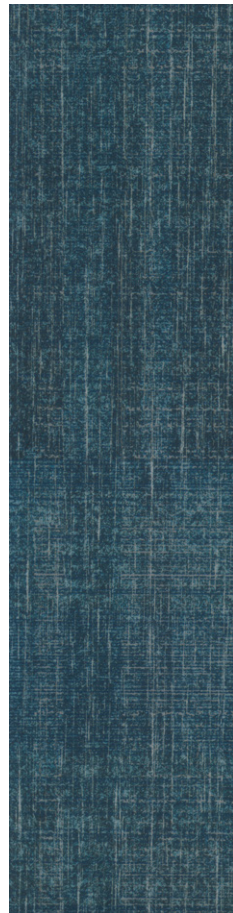
In our new **Flotex Prairies** collection, grounding shades of warm and cool neutrals blend, support, and highlight pops of color in saturated hues and tonal gradations. Lines and texture shift and fade in layers, creating depth and movement across the space.

The Prairies collection is inspired by the colors of the rainbow, grouped together in pairs of hue and tone, to create depth and movement across the Prairies. Colors and patterns define spaces and create smooth transitions from one hue to another with soft, tonal gradations. Combine 2 or more colors and patterns, or combine all 20 for a dynamic installation. The possibilities are endless!

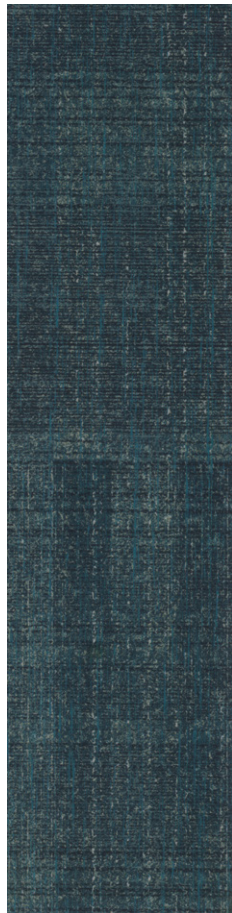




075714 | blue hue



075715 | blue tone



075716 | indigo hue



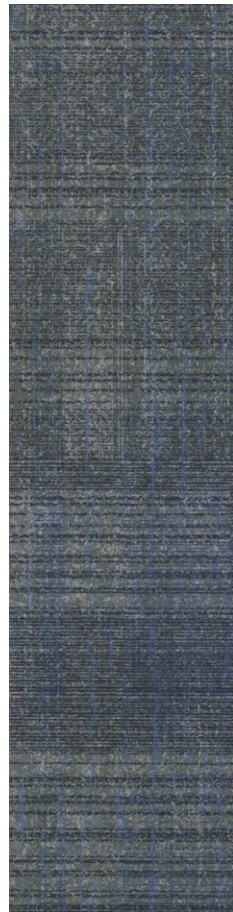
075717 | indigo tone



075705 | cool 3



075718 | violet hue



075719 | violet tone



075700 | warm 1



075701 | warm 2



075702 | warm 3



075705 | cool 3

Ten top reasons to choose Flotex flooring for your facility:

1. **Durable** – resists crushing and matting due to 46,000 upright nylon 6,6 fibers per inch².
2. **Easy to clean** – dense, upright fibers allow dirt to be easily removed by vacuuming, with no loops or twists to trap dirt.
3. **Soil and stain resistant** – most stains and spills can easily be removed, including permanent marker.
4. **Slip resistant wet and dry** – provides safety and minimizes liability from slips and falls.
5. **Hygienic** – Flotex is a supplement to, and not a substitute for, standard infection control practices, and has been shown to reduce microbial contamination based on Independent Laboratory Testing.
6. **Closed cell cushion backing** – comfortable and quiet underfoot. 100% waterproof.
7. **Acoustics** – Sound Absorption (20dB) and Impact Sound Transmission (flooring/ceiling) of IIC 59 for tile and IIC 57 for sheet.
8. **Eliminates odors** - Does not allow moisture to penetrate and fester between the primary and secondary backings as can be the case with traditional carpet.
9. **Improved indoor air quality** – dirt and allergens are easily removed by vacuuming. Flotex is the only textile flooring material awarded the British Allergy Foundation's Seal of Approval. Does not contain harmful VOC's.
10. **Design** – warm, stylish aesthetics available in sheet and tile. Flexibility to create custom designs.