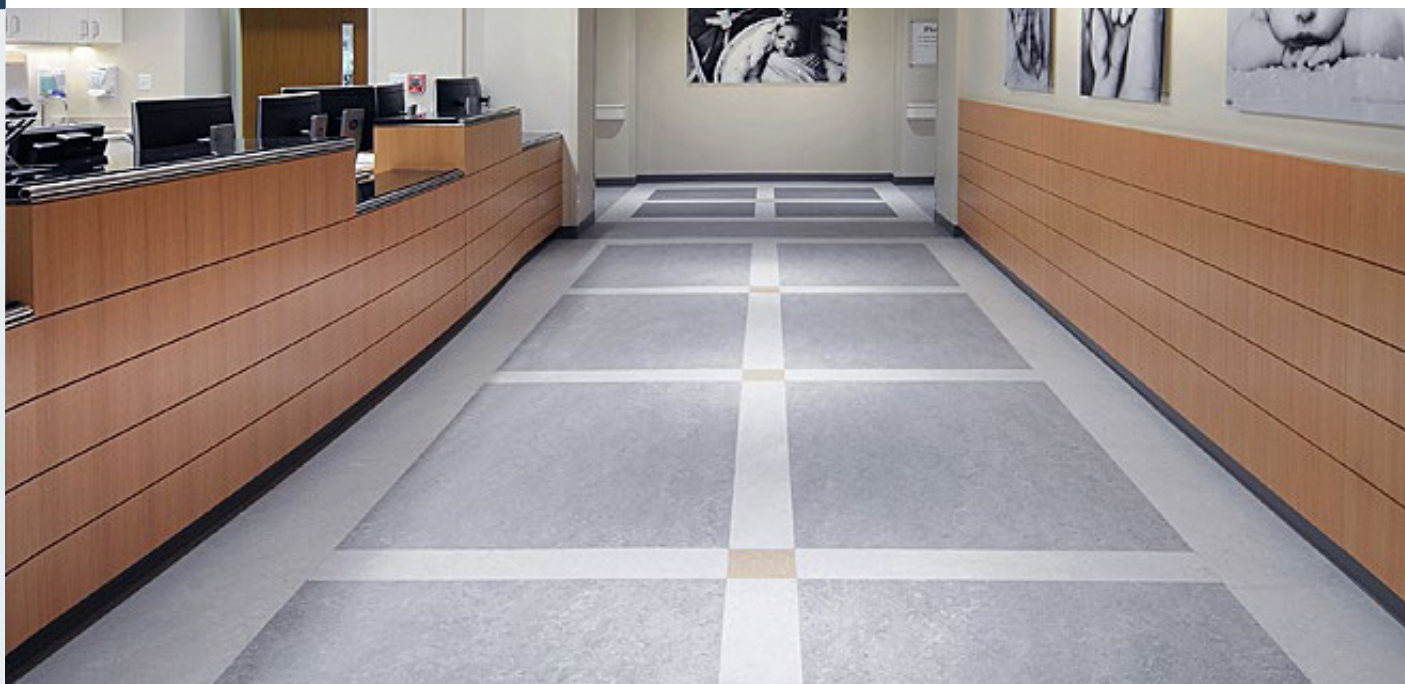


Product Information: Marmoweld ETU Seam Weld Paste



Forbo Marmoweld ETU (EZ to use) is a colour matching paste weld/sealer specifically designed for finishing Marmoleum installations.

This product provides an effective solution for filling minor gaps in seams when using the net fit installation method, ensuring a seamless and long-lasting flooring finish*.

LEAD TIMES

Marmoweld ETU is made to order with an approximate 14 business days lead time from the placement of the order.

BENEFITS

- Cost savings over traditional heat welding
- Ease of use (EZ)
- Elimination of potential damage caused by grooving, burning, and scalping seams during traditional heat welding
- Enhanced aesthetics compared to standard heat-welded floors

CONTENTS

[CLICK TO CONTINUE](#)

[Technical specifications](#) **Page 2**

[Installation guide for welding seams](#) **Page 2**

[Installation guide for minor repairs](#) **Page 3**



*As a result of the developments and advancements made over the past decades, including the introduction of Marmoleum® Topshield pro (Forbo's factory finish for Marmoleum®), heat welding is now typically unnecessary for most applications.

Technical specifications

Safety	100% Solvent and Ammonia Free Non-Flammable
Storage	Do Not Freeze
Shelf life	2 years in unopened container
VOC Emissions	0 g/L (per SCAQMD rule 1168)
Odour	Little to no odour
Spread rate (1 coat)	1 mm gap = ≤ 300 lm 1.5 mm gap = ≤ 230 lm 3 mm gap = ≤ 115 lm
Unit size	230 ml



INSTALLATION ADVICE

Forbo Marmoweld ETU is a colour-coordinating paste weld which can also be used to make minor repairs for Marmoleum products.

Forbo Marmoweld ETU should never be diluted or mixed with any other sealants.

Forbo Marmoweld ETU is only for use with Forbo Marmoleum products.

Material should always be visually inspected prior to installation. If there are any questions regarding the quality of material, contact your local Forbo representative prior to installation.

TOOLS REQUIRED

- Clean white lint-free cloths, clean buckets and clean cold water

APPLICATION

Using Forbo Marmoweld ETU for welding 1.0mm prepared seams:

Always apply Forbo Marmoweld ETU immediately upon the completion of installed seams. Delaying the application of the product increases the chances of seam contamination.



Carefully clean all excess adhesive from within the 1mm prepared seam before applying Forbo Marmoweld ETU.

This must be done while the adhesive is still wet and can be accomplished using the edge of the Forbo Marmoweld ETU applicator card.



Remove all loose debris from the surface of the flooring material by sweeping or vacuuming. Remove any residual adhesive from the surface with a clean, white, lint-free cloth and clean, cool water prior to applying Forbo Marmoweld ETU.

Carefully apply Forbo Marmoweld ETU directly into the 1mm prepared seam with the applicator card.



Work in manageable sections of 1 metre to 1.5 metres at a time by carefully pushing Forbo Marmoweld ETU into and across the seam.

Remove excess wet Forbo Marmoweld ETU from the sides of the seam with the applicator card.

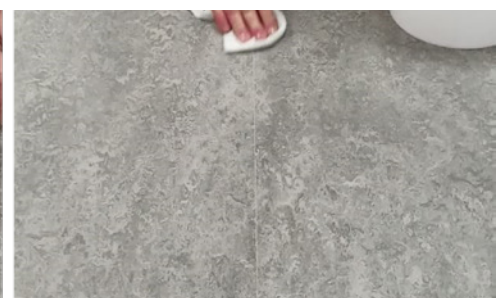
Let the welded seam dry for a minimum of 30 minutes.



Carefully wipe off any Forbo Marmoweld ETU residue from the sides of the welded seam with a clean, white, lint-free damp cloth. Repeat this process as necessary, making sure that only clean cloths and water are being used so residue from unclean water or cloths is not being spread.

NOTE –

Change water and cloths frequently to eliminate spreading weld residue over the surface of the floor. Clean water and cloths will help reduce further cleanup after the Forbo Marmoweld ETU has dried.



After application and cleaning is complete, carefully inspect that there are no voids or low spots. Re-apply Forbo Marmoweld ETU as necessary so the final seam is free of voids or low spots.

If reapplication is required, let the welded seam dry for a minimum of 30 minutes, then carefully wipe off any Forbo Marmoweld ETU residue from the sides of the welded seam with a clean, white, lint-free damp cloth. Repeat this process as necessary, making sure that only clean cloths and water are being used so residue from unclean water or cloths is not being spread.

Ensure that **ALL** Forbo Marmoweld ETU residue is removed from the surface of the flooring material.

Once Forbo Marmoweld ETU seams are completed, allow a minimum of an additional 30 minutes before damp mopping.

Do not flood the floor or conduct wet maintenance for a minimum of 24 hours. Refer to Forbo Flooring's Installation Guide for complete installation guidelines of Marmoleum.

Dried Forbo Marmoweld ETU residue on the surface of the material can easily be removed with clean, cool water and a clean, white, lint-free cloth within 8 hours.

To remove residue after 8 hours: use a properly diluted neutral pH cleaner like [Forbo 818 Monel](#) with a 10-minute dwell time, then use a swing machine with a 3M™ #5100 Red Cleaning pad, pick up that solution, and follow with a clean water rinse.

APPLICATION

Using Forbo Marmoweld ETU for Minor Repairs:



Sparingly apply Forbo Marmoweld ETU to areas requiring minor repairs such as gaps at seams or perimeters with the Forbo Marmoweld ETU applicator card.



Remove any excess Forbo Marmoweld ETU from the surface of the floor using the Forbo Marmoweld ETU applicator card.

Let the repaired area dry for a minimum of 30 minutes.

Carefully wipe off any Forbo Marmoweld ETU residue from the sides of the repair with a clean, white, lint-free damp cloth.



Repeat this process as necessary, making sure that only clean cloths and water are being used so residue from unclean water or cloths is not being spread.

NOTE –

Change water and cloths frequently to eliminate spreading weld residue over the surface of the floor. Clean water and cloths will help reduce further cleanup after the Forbo Marmoweld ETU has dried.

After application and cleaning, carefully inspect that there are no voids or low spots.

Re-apply as necessary so the final repair is free of voids or low spots.

If reapplication is required, let the repaired area dry for a minimum of 30 minutes, then carefully wipe off any Forbo Marmoweld ETU residue from the sides of the welded seam with a clean, white, lint-free damp cloth.

Repeat this process as necessary, making sure that only clean cloths and water are being used so residue from unclean water or cloths is not being spread.

Ensure that **ALL** Forbo Marmoweld ETU residue is removed from the surface of the flooring material.

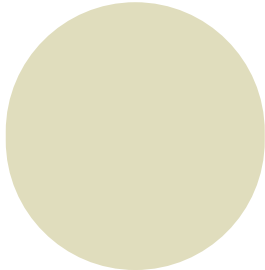
Once Forbo Marmoweld ETU repairs are completed allow a minimum of an additional 30 minutes before damp mopping. Do **NOT** flood the floor or conduct wet maintenance for a minimum of 24 hours. Refer to Forbo Flooring's [Marmoleum Installation Guide](#) for complete installation guidelines of Marmoleum®.

NOTE –

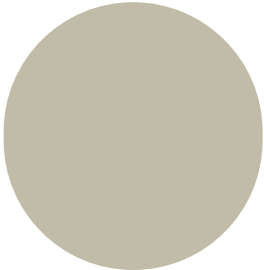
Forbo Marmoweld ETU is intended for minor repairs. It is not intended to fill large gaps or to fix poor installations. The size of the repair will affect the yield of the Forbo Marmoweld ETU. Some repairs may require additional applications to ensure there are no low spots or voids. No weld is intended to correct issues of deficient installation.

For more information, please contact your local Forbo representative or call **1800 224 471** or email info.au@forbo.com.

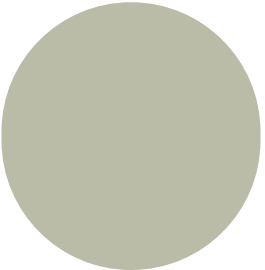
marmoweld ETU colour chart



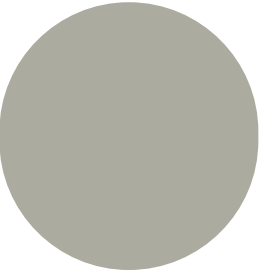
PW3722



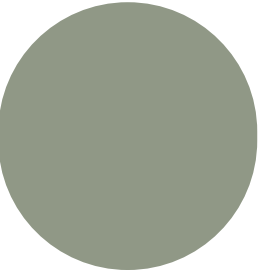
PW3431



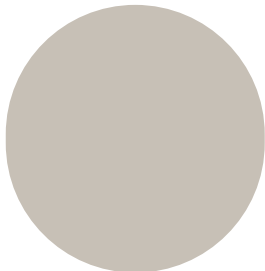
PW3430



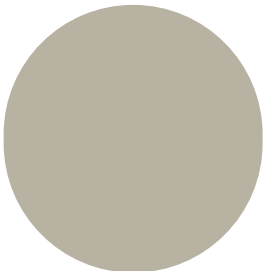
PW3032



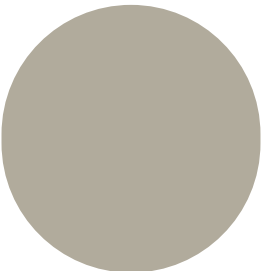
PW3891



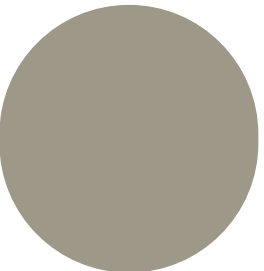
PW5232



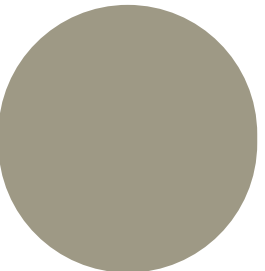
PW3717



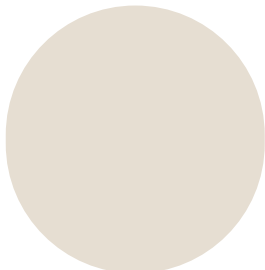
PW3428



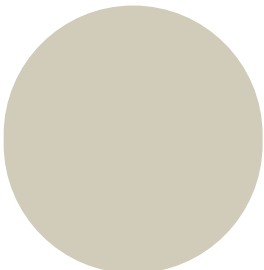
PW3736



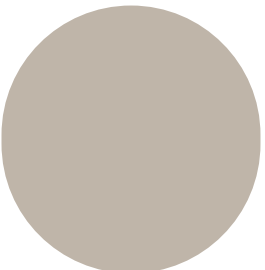
PW5801



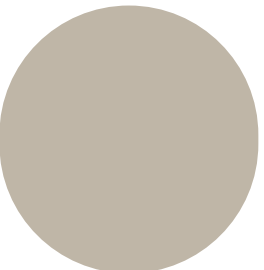
PW3650



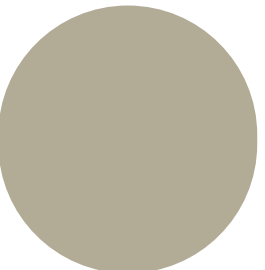
PW3257



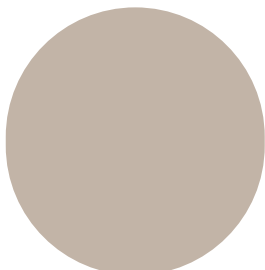
PW3888



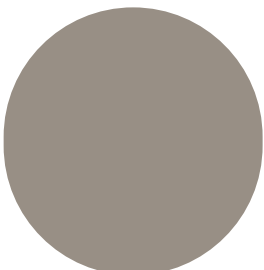
PW3136



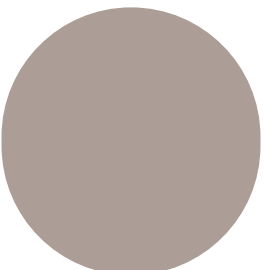
PW3733



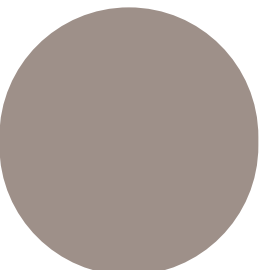
PW3432



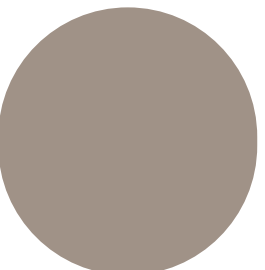
PW3573
PW3702
PW5250



PW3216



PW3718



PW3706

Please note that the colour chips are digital representations only and serve as reference guides. Product selection should be based on the the selected Marmoleum product colour.

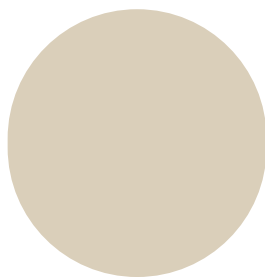


FLOORING SYSTEMS

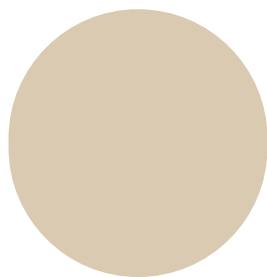
marmoweld ETU colour chart



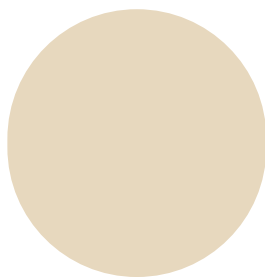
PW3584
PW3355



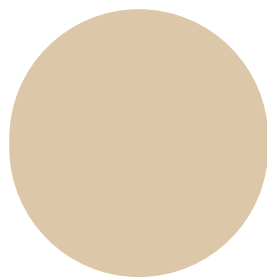
PW3575
PW3050
PW5257



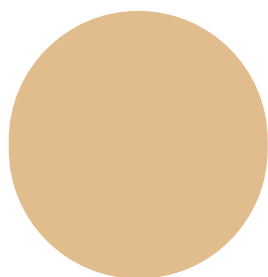
PW5252



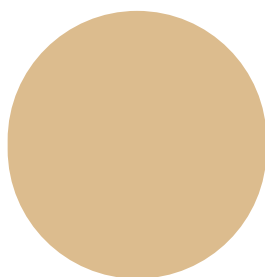
PW607



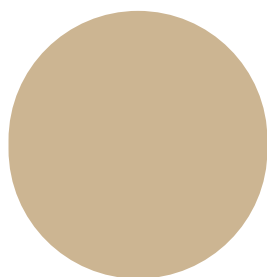
PW3701



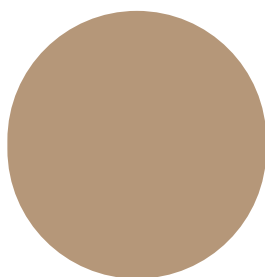
PW2707



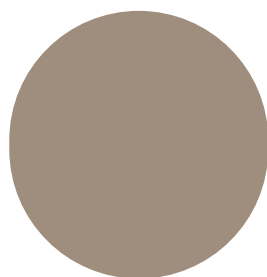
PW2499



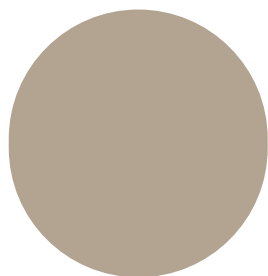
PW5255
PW3726



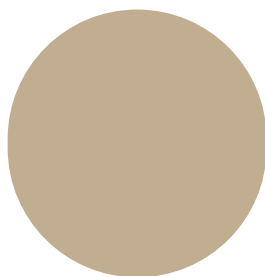
PW3727



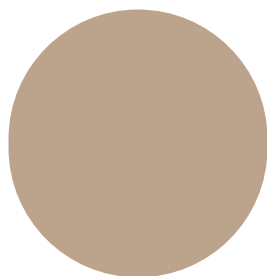
PW3580



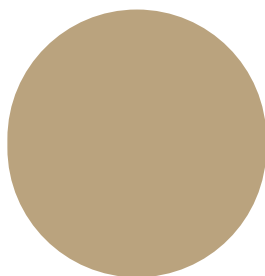
PW3708



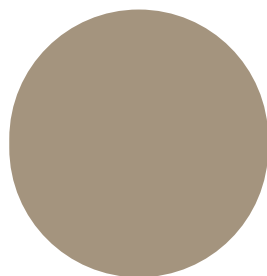
PW3728



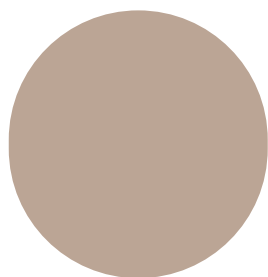
PW3890



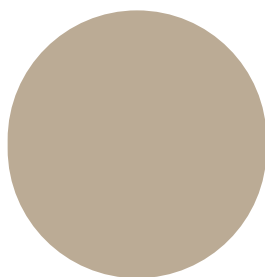
PW3427



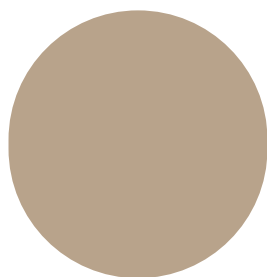
PW3279



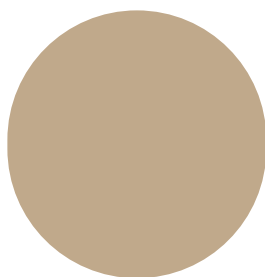
PW3232



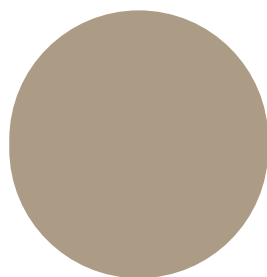
PW3715



PW3234
PW3630



PW5216
PW5253



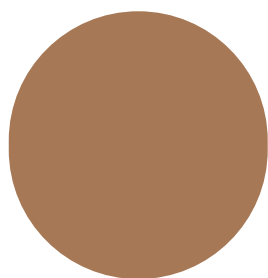
PW3252
PW5803

Please note that the colour chips are digital representations only and serve as reference guides.
Product selection should be based on the the selected Marmoleum product colour.

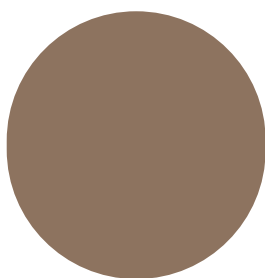


FLOORING SYSTEMS

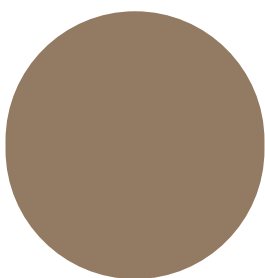
marmoweld ETU colour chart



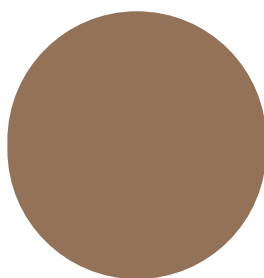
PW3233



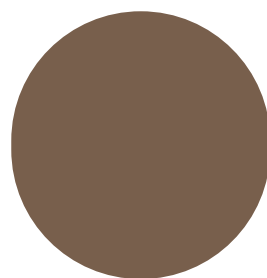
PW5804



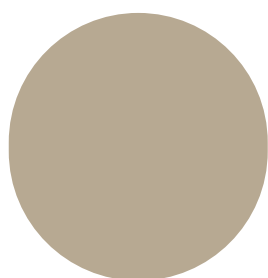
PW5217



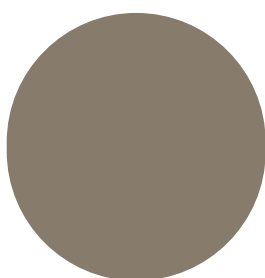
PW3370



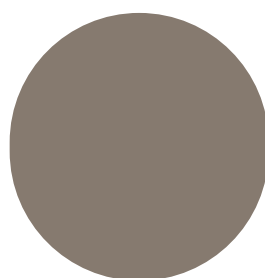
PW5254



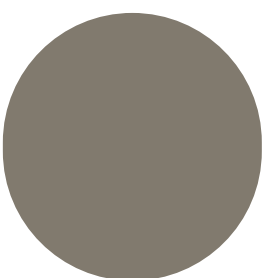
PW3729
PW3433
PW5248



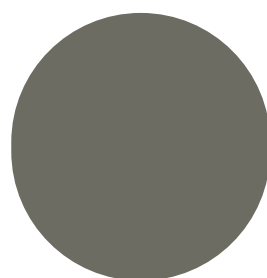
PW5231



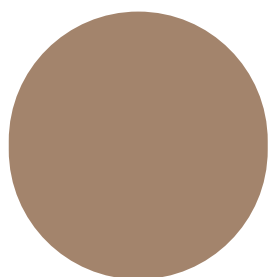
PW5225



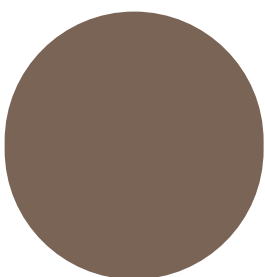
PW3704



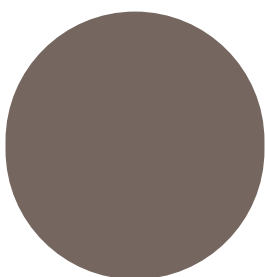
PW173/PW3373



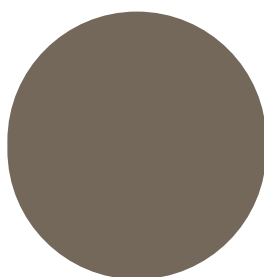
PW3881



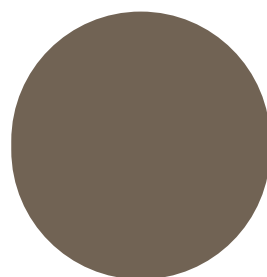
PW3235
PW3874



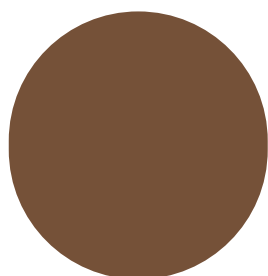
PW3737



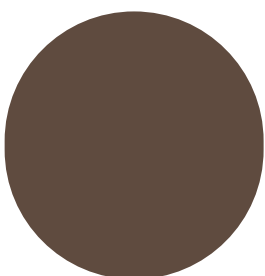
PW3705



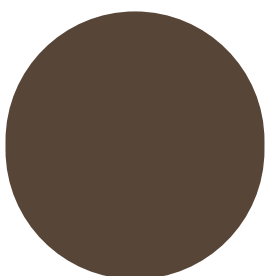
PW3657



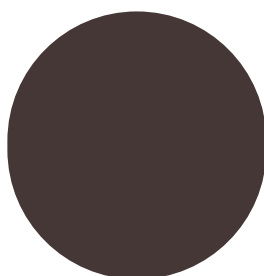
PW5229



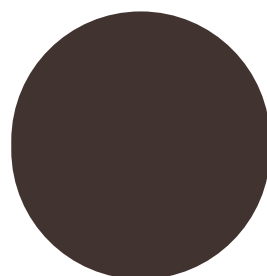
PW3746



PW5218



PW3353
PW3581



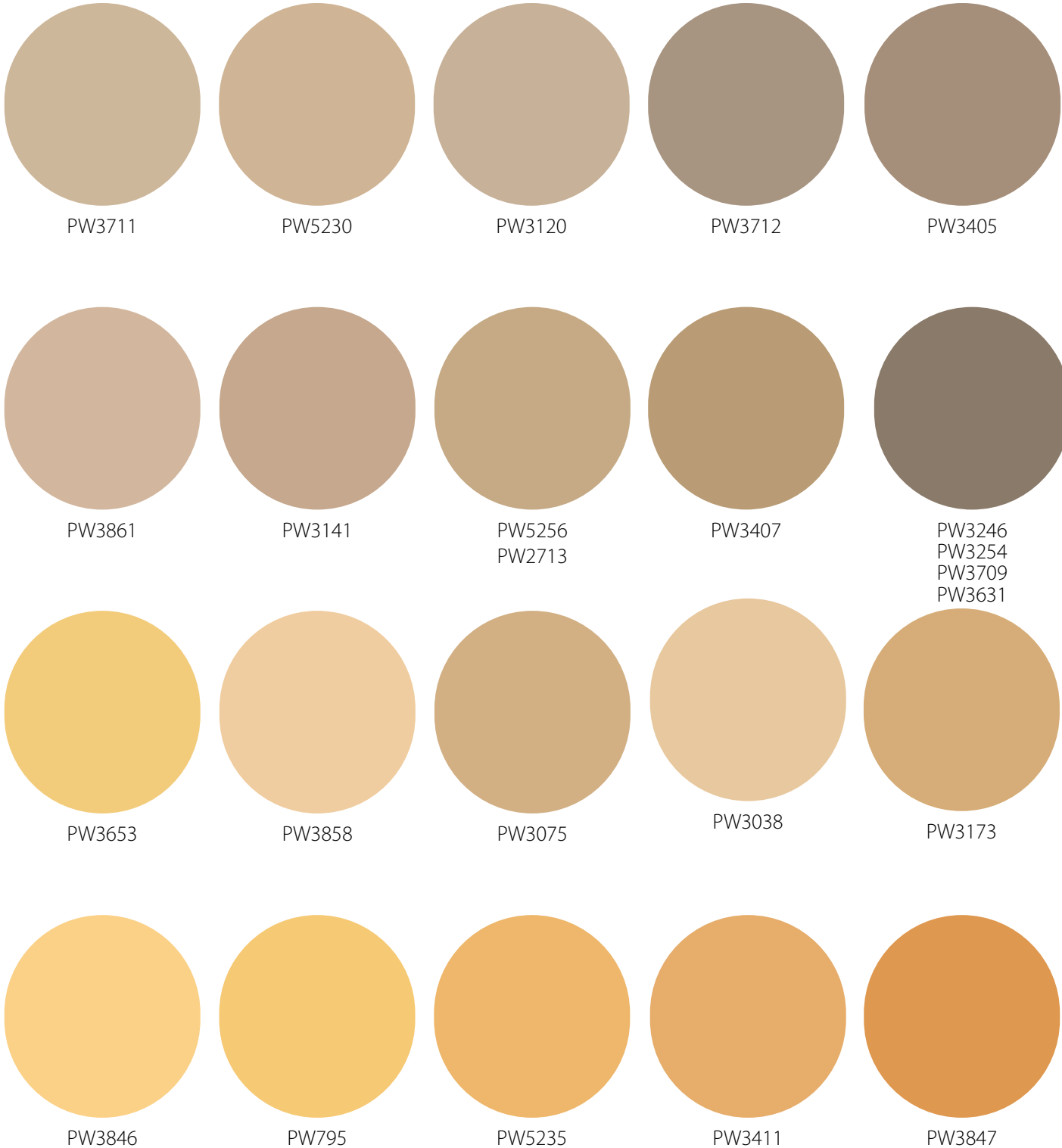
PW3632

Please note that the colour chips are digital representations only and serve as reference guides.
Product selection should be based on the the selected Marmoleum product colour.



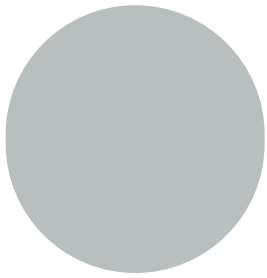
FLOORING SYSTEMS

marmoweld ETU colour chart

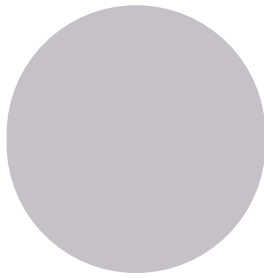


Please note that the colour chips are digital representations only and serve as reference guides. Product selection should be based on the the selected Marmoleum product colour.

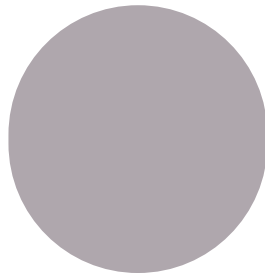
marmoweld ETU colour chart



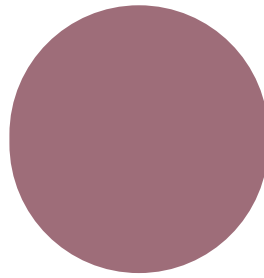
PW3732



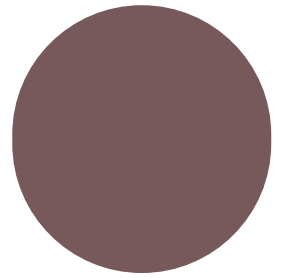
PW3363



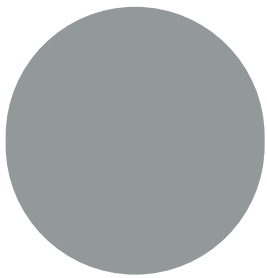
PW3266



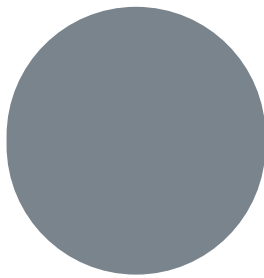
PW3740



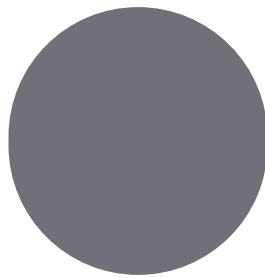
PW3272



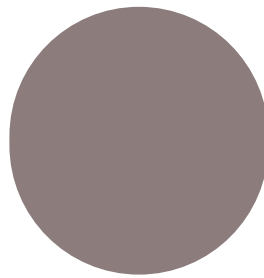
PW3053
PW3582



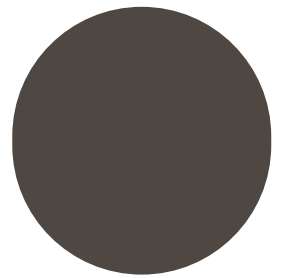
PW3734



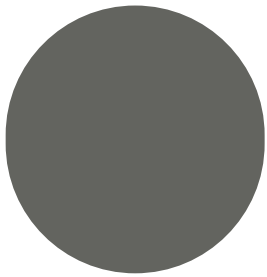
PW3730
PW3735



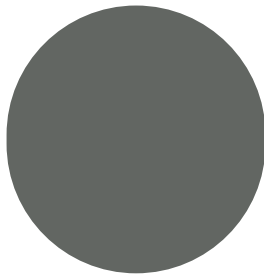
PW3123



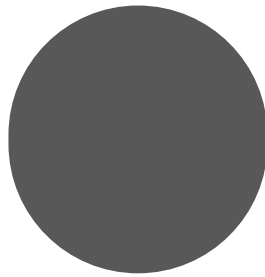
PW3725



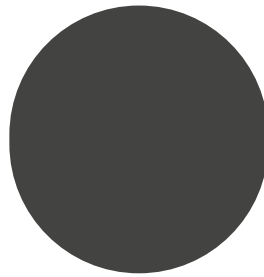
PW3703
PW3745



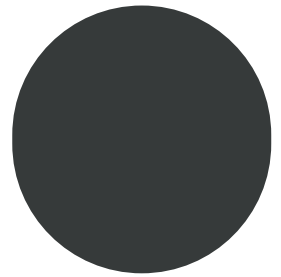
PW3137
PW5237



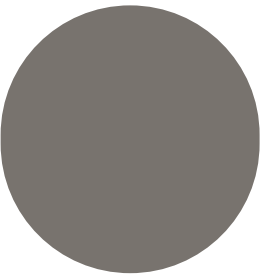
PW3048 | PW3368
PW3421 | PW3607
PW3872



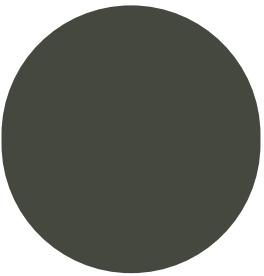
PW3139



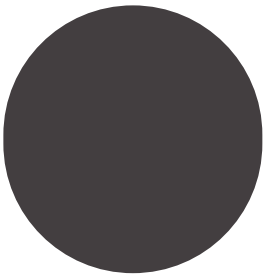
PW3707



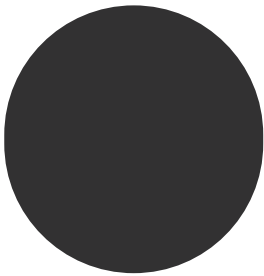
PW5251



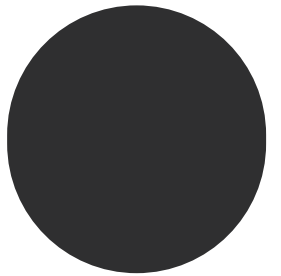
PW3583
PW3359



PW3236



PW3613
PW2939



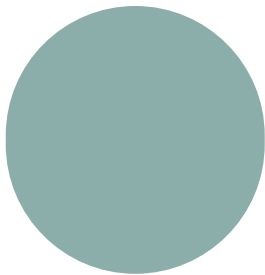
PW123/PW3323

Please note that the colour chips are digital representations only and serve as reference guides. Product selection should be based on the the selected Marmoleum product colour.

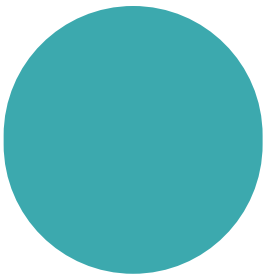


FLOORING SYSTEMS

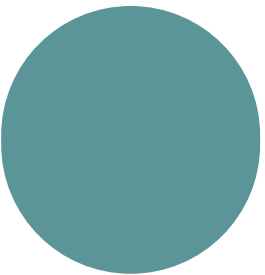
marmoweld ETU colour chart



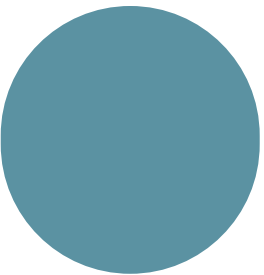
PW3267



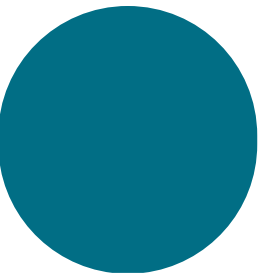
PW3269



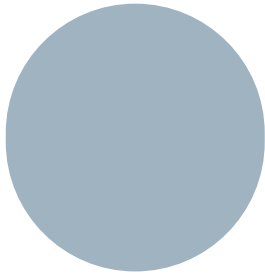
PW3238



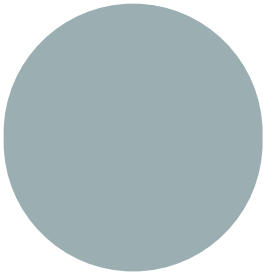
PW3644



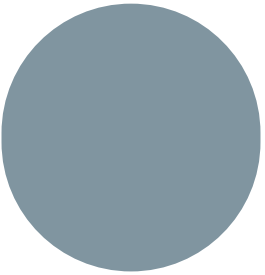
PW3264
PW3645



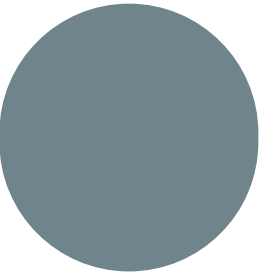
PW3828



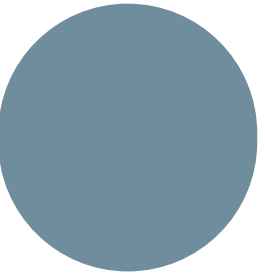
PW3429



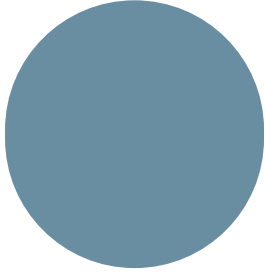
PW3219
PW3360



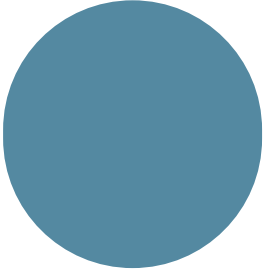
PW3731



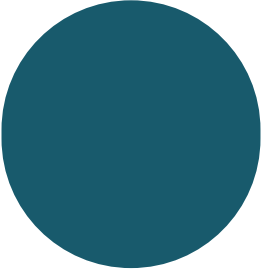
PW3642



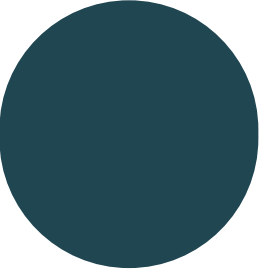
PW3275



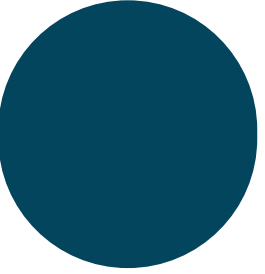
PW3055



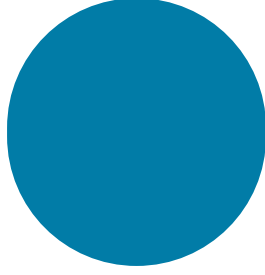
PW3652



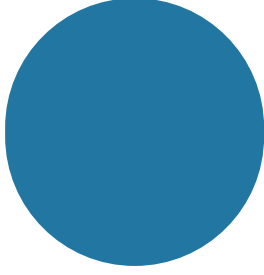
PW3358



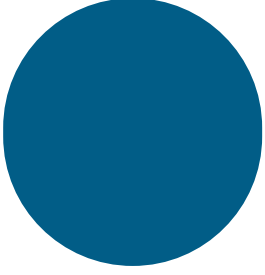
PW3261



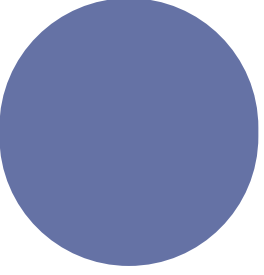
PW3656



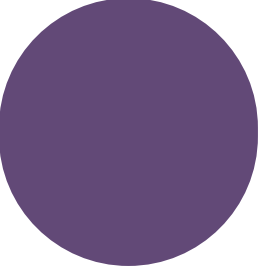
PW3210
PW3739



PW3030



PW3270



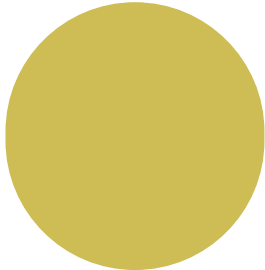
PW3277

Please note that the colour chips are digital representations only and serve as reference guides. Product selection should be based on the the selected Marmoleum product colour.

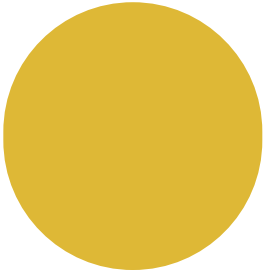


FLOORING SYSTEMS

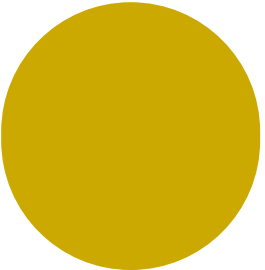
marmoweld ETU colour chart



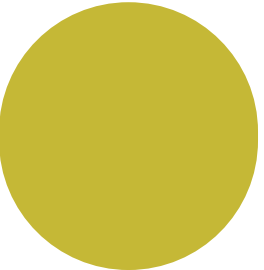
PW3646



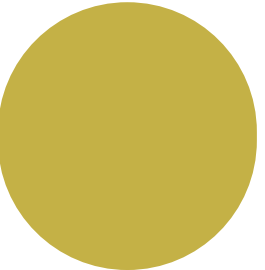
PW3741



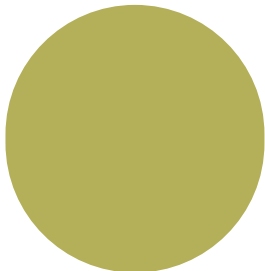
PW3634



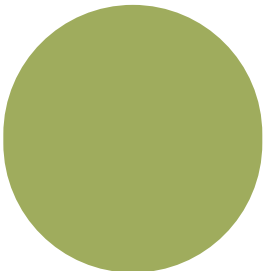
PW3224



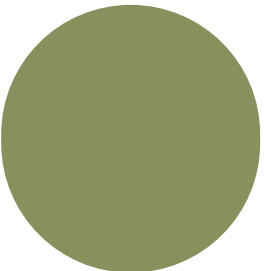
PW3885



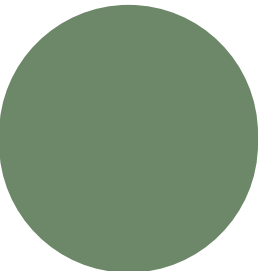
PW3413
PW3265
PW3655
PW3742



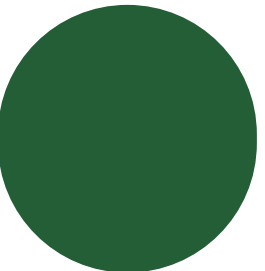
PW3258



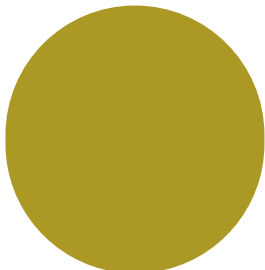
PW3260
PW3212



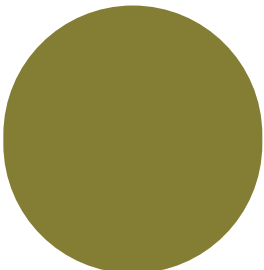
PW3222



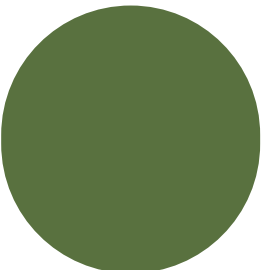
PW3271



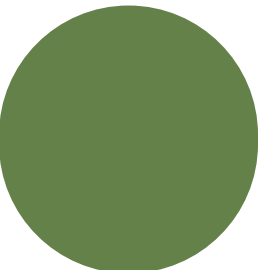
PW3362
PW3878



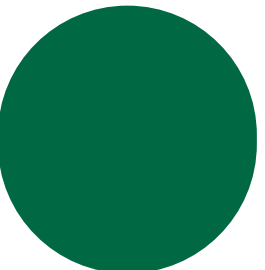
PW3247



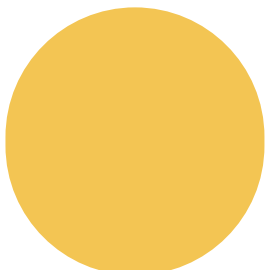
PW3282



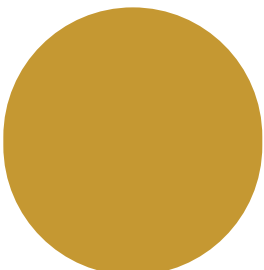
PW3647



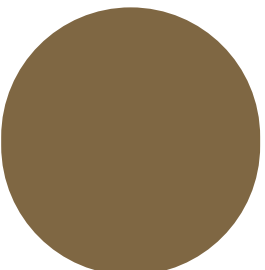
PW3649



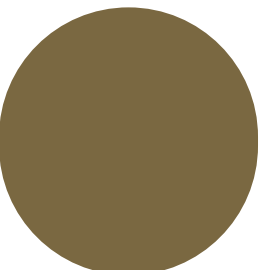
PW3251



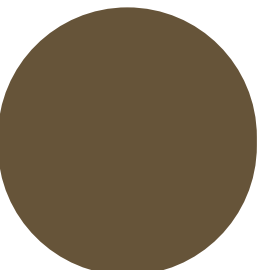
PW3259



PW3426



PW3748



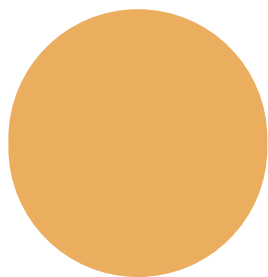
PW3568

Please note that the colour chips are digital representations only and serve as reference guides. Product selection should be based on the the selected Marmoleum product colour.

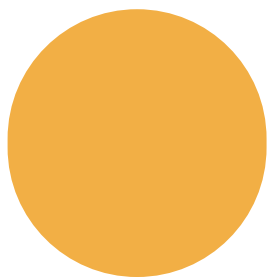


FLOORING SYSTEMS

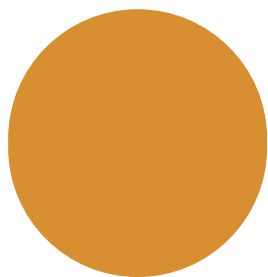
marmoweld ETU colour chart



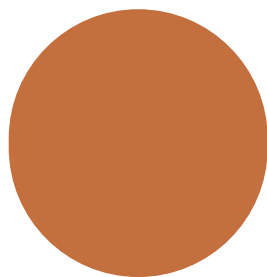
PW3208



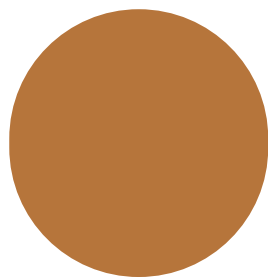
PW3225



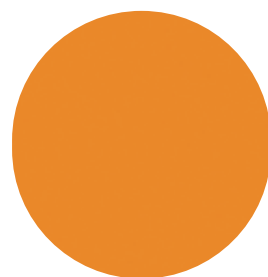
PW3354



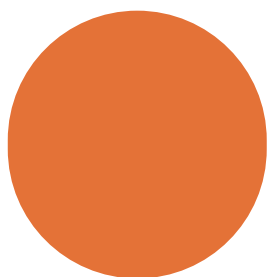
PW3403



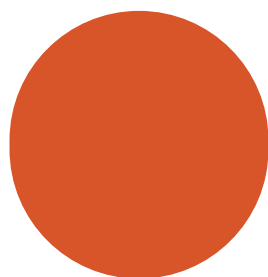
PW3174



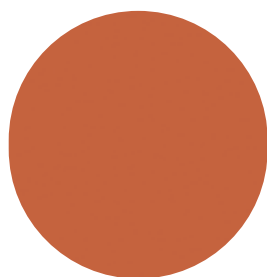
PW3262



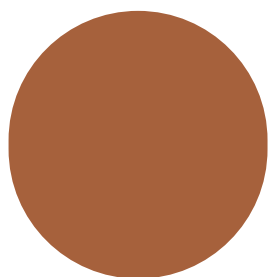
PW3738
PW3278



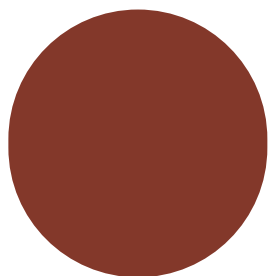
PW3651



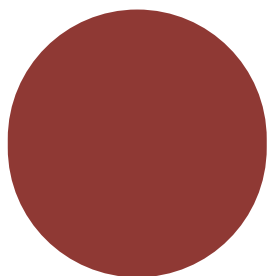
PW3126
PW3243



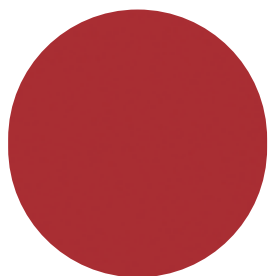
PW2767



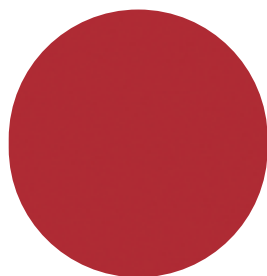
PW3203
PW3352



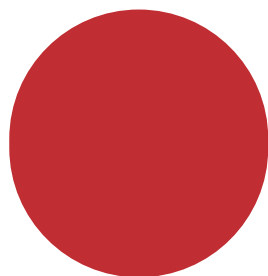
PW3273



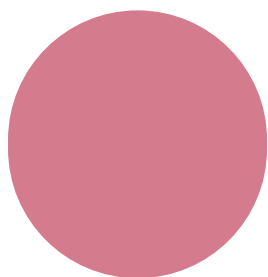
PW3131



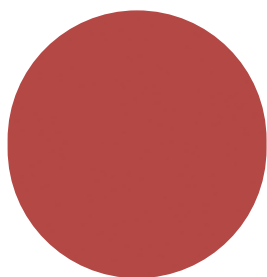
PW3127



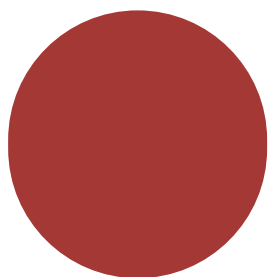
PW3743
PW3654



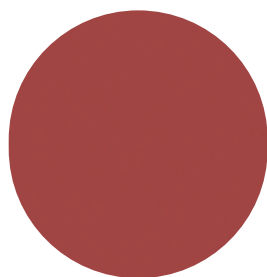
PW3268



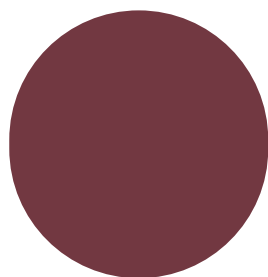
PW3263
PW3215



PW5242



PW3625



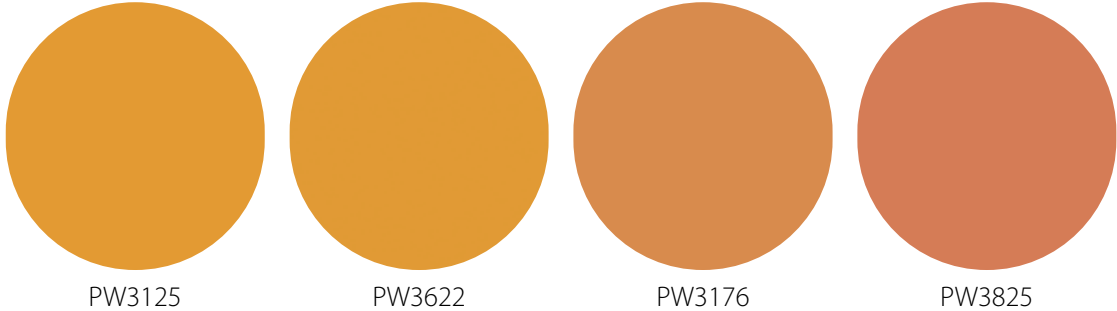
PW3276

Please note that the colour chips are digital representations only and serve as reference guides. Product selection should be based on the the selected Marmoleum product colour.



FLOORING SYSTEMS

marmoweld ETU colour chart



For more information, please contact your local Forbo representative or call **1800 224 471** or email info.au@forbo.com.

Please note that the colour chips are digital representations only and serve as reference guides. Product selection should be based on the the selected Marmoleum product colour.



FLOORING SYSTEMS