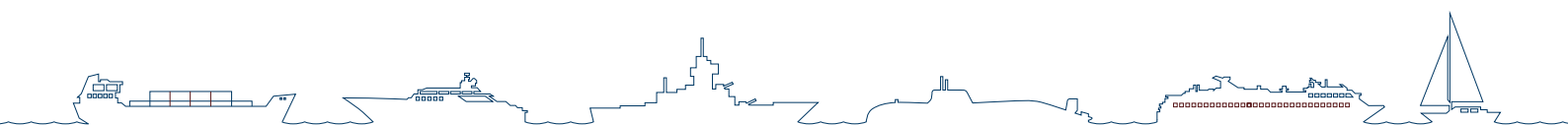


TRANSPORT FLOORING FOR MARINE



creating better environments



FLOORING SYSTEMS



Contents

- 4 Flotex FR
- 8 Coral T32 FR
- 12 Westbond FR
- 16 Contact us

Creating better marine environments across the world

Forbo understands that material choice is one of the most critical aspects of designing marine transport interiors.

The material sets the tone for the overall look and feel of a vessel with many criteria influencing the specification including aesthetics, durability, maintenance and the requirement of IMO certification. Add to this other performance requirements such as slip resistance, sound absorption, comfort, anti-static properties, cleanability and green credentials and it becomes obvious why flooring choice is a complex one.

Forbo Flooring Systems manufactures the widest range of floor coverings in the market and offers a portfolio of IMO and non IMO certified products. Our Key Account Managers will help you, and provide all the expert advice you need when selecting flooring for

your marine projects. In addition to our core collections, we also offer a custom design service to help you create flooring designs that perfectly match your interior requirements.

We understand that aesthetics and corporate branding are of high importance, and that functionality and durability play an important role in defining different floor covering requirements.

Need to reduce the costs of cleaning?

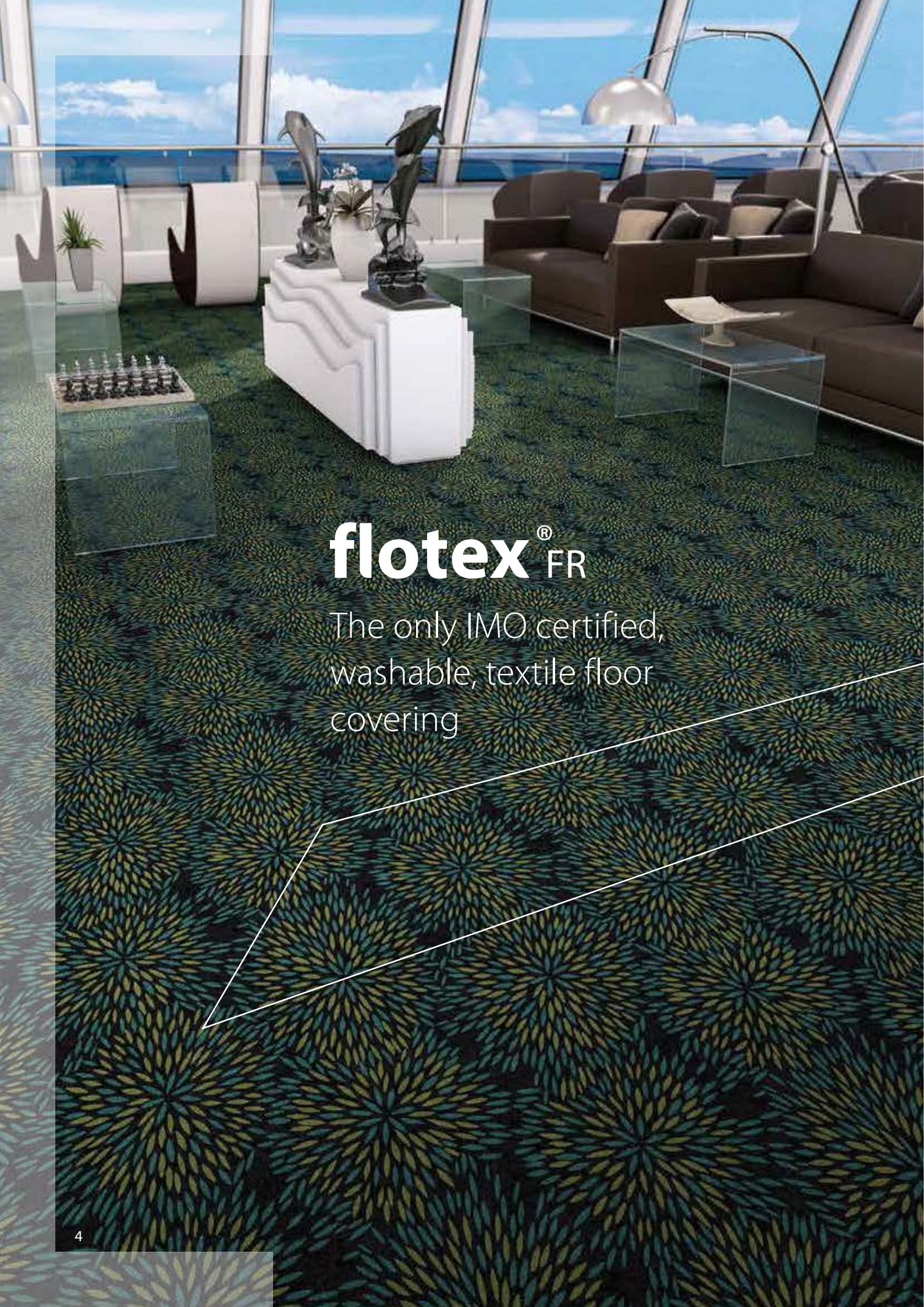
In all marine transport environments, having protective entrance systems such as Forbo's Coral T32 FR can help greatly. With a cut pile construction of 60% wool and 40% nylon, it stops up to 90% of walked in dirt and moisture, which significantly reduces cleaning costs and prolongs the lifetime of the interior floorcoverings. It also meets the IMO standards.

IMO certified products are;

- *Flotex FR*
(a unique flocked floorcovering)
- *Coral T32 FR*
(a textile entrance system)
- *Westbond FR*
(fusion bonded carpet tiles)
- *Forbo's own IMO certified primers and adhesives*

Non IMO products include;

- *Linoleum* (Marmoleum)
- *Vinyl: Safety, Acoustic and LVT*
(Step, Sarlon Trafic, Allura)
- *Carpet tiles* (Tessera)
- *Flocked* (Flotex)
- *Entrance systems* (Coral, Nuway)



flotex® FR

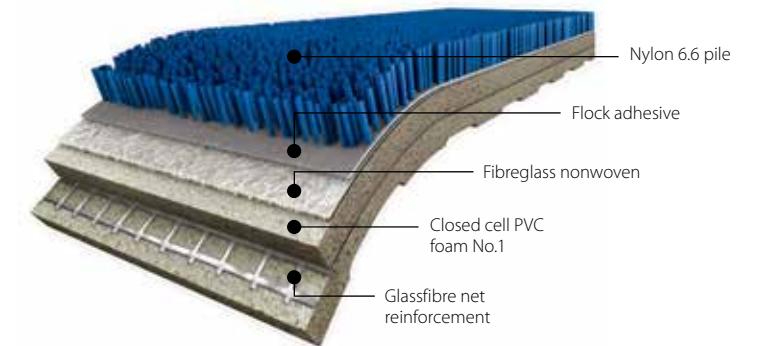
The only IMO certified,
washable, textile floor
covering

flotex® FR

Flotex FR is unique, combining the cleaning properties and durability of a resilient flooring with the comfort, slip resistance and acoustic properties usually associated with textiles.

Benefits:

- Fully compliant to IMO Marine standards
- Smooth textile velour like surface that's comfortable and warm underfoot
- Excellent slip resistance
- 100% waterproof. Impervious backing makes it suitable for wet cleaning
- Durable construction: using Nylon 6.6
- Easy to clean
- Easy to repair any damaged areas
- Anti-microbial
- Improved indoor air quality (independently proven by Allergy UK)
- Excellent acoustic properties up to 22 dB
- Choose from an extensive range of designs and colours or use our custom design service
- High definition print offers you complete freedom of design.



Flotex FR is extremely dimensionally stable and has a velour-like surface whilst being functional and extremely easy to clean.

Having been awarded the prestigious Allergy UK Seal of Approval, Flotex FR is proven to offer consistent protection against bacteria and reduce allergens, improving indoor air quality for passengers.



Flotex FR can be digitally printed. Its high definition quality and specialist printing technology allow for large endless pattern repeats and vivid lifelike colours. This creates a new dimension for Flotex FR and provides ultimate design flexibility for marine environments.

flotex[®] vision FR

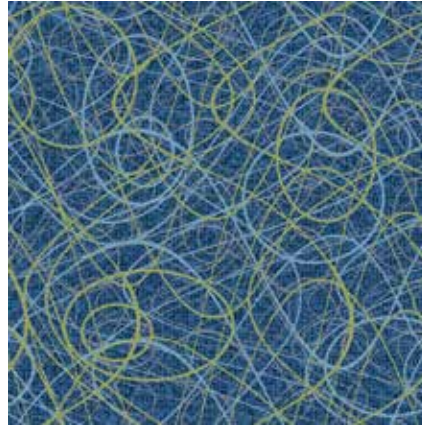
Flotex Vision FR offers an infinite number of design options ranging from abstracts with an intricate colour spectrum to realistic images of natural materials.

With over 500 items to choose from, Flotex Vision is best viewed on Forbo's online digital library which is continuously updated. The designs in Flotex Vision FR fall into six broad categories, each of which represents a different design direction: Floral, Lines, Shape, Pattern, Image and Naturals.



LINES

Line or stripe designs, each with their own characteristics, ranging from muted and sophisticated colourways to very complex and multi-colour patterns.



PATTERN

Textured, non-directional visuals created through the intricate interplay of networks and patterns.



FLORAL

A selection of floral designs, ranging from abstract, graphic flower motifs to romantic images of roses and butterflies.



SHAPE

A collection of organic shapes and motifs delivering beautiful all-over patterns, including both contemporary and traditional designs.



NATURALS

This collection offers photorealistic images of natural materials such as wood, stone, ceramics and cork floors. The design technology creates amazingly realistic aesthetics, with the added benefits of improved acoustics, slip resistance and reduced maintenance costs.



IMAGE

A design category containing a wide variety of photographic images. Grass, sand, water drops, buttons and street maps are just some of the possibilities to be found within this intriguing range.

Total design freedom

Flotex Vision FR is a collection of high definition digital print designs that create superior textures with almost 3D like appearance. As Flotex Vision FR has 70 million fibres per square per metre, it provides a matt high density substrate for printing, enabling vibrant designs and true-to-life visuals to be produced in high level photographic resolution, providing ultimate design flexibility for marine interiors. All colours, tones and hues are achievable with Flotex Vision FR.



All of the Flotex Vision designs offer the option to create your own colourway, allowing you to match the floor precisely to your interior design scheme or corporate identity colours. If you have your own vision of what you want on the floor, we also offer a complete custom design service on request.



www.flotexvision.com



flotex® colour FR

Flotex Colour is a collection of three designs (Metro, Penang and Calgary) which together form a rhapsody of colour across a broad spectrum.

The swatches shown are only a small selection of the colourways available. Please refer to the Forbo Flooring website in order to see the full colour palette.

flotex® metro FR



246033 | Metro emerald



246013 | Metro amber



482006 | Penang sage



482022 | Penang amber



290030 | Calgary spa



290011 | Calgary quartz



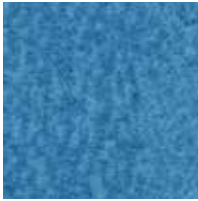
246031 | Metro cherry



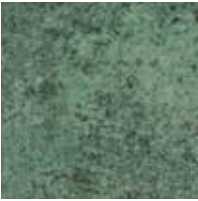
246025 | Metro tangerine



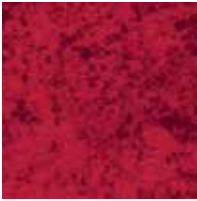
482024 | Penang purple



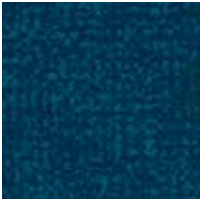
482011 | Penang sapphire



290009 | Calgary moss



290031 | Calgary cherry



246023 | Metro horizon



246008 | Metro anthracite



482031 | Penang ash



482073 | Penang brick



290022 | Calgary condor



290020 | Calgary toffee

flotex® penang FR

flotex® calgary FR

TECHNICAL SPECIFICATIONS

Technical specifications

Flotex FR meets the requirements of EN 1307

	Total thickness	ISO 1765	Approx. 3.3 mm
	Commercial heavy	EN 685	Class 33
	Roll width		200 cm
	Roll length		30 m
	Total weight	ISO 8543	Approx. 1225 gram/m²
	Pile installation weight	ISO 8543	Approx. 250 gram/m²
	Pile thickness	ISO 1766	Approx. 2 mm
	Pile material		100% polyamide
	Dimensional stability	ISO 2551	≤ 0.20%
	Light fastness	EN ISO 105/B02	6
	Flexibility	ISO 24344	No cracking (10 mm diameter Mandrel)
	Electrical resistance	ISO 10965	Approx. 10 ¹⁰ Ω
	Contact sound insulation	ISO 140-8	Δ Lw = approx. 22 dB
	Tested flammability standards		IMO Resolution 307(88) Annex 1 Pt2 IMO Resolution 307(88) Annex 1 Pt5
	Slip resistance	EN 13893	> 0.30
	Body voltage	ISO 6356	< 2 kV
	Heat transmission resistance	EN 8302	0.0411 m² K/W



IMO Certificate No. 164.117/1121/WCL MED0364

coral[®] T32 FR

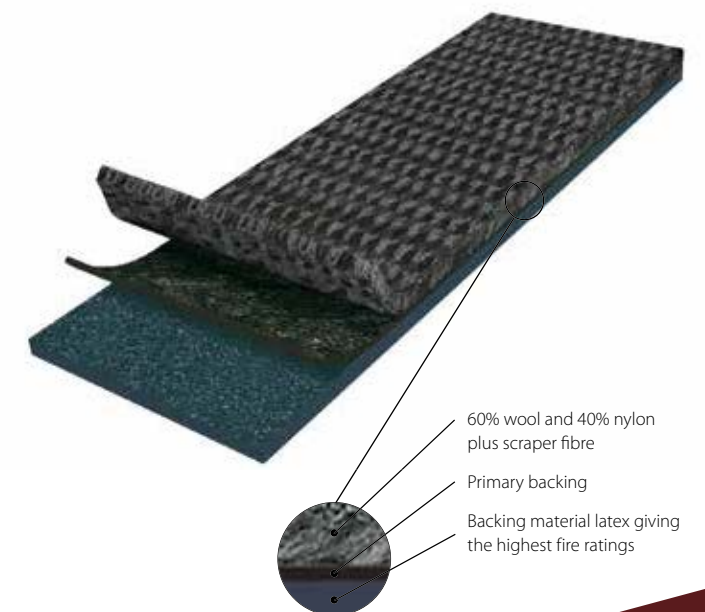
The market leader
in entrance systems

coral[®] T32 FR

Coral is the market leader in entrance systems providing an exceptionally versatile and proven range of 'clean-off' entrance system products and customisable carpets.

Benefits:

- Fully compliant to IMO Marine standards
- Stops up to 90% of walked in dirt and moisture
- High moisture absorption
- Dirt scraping for effective clean off
- Excellent dirt storage/soil hiding
- Durable construction: using a 60% wool/40% nylon mix
- Advanced colouring and choice
- Using Coral T32 FR can reduce cleaning costs and prolong the lifetime of on board floor finishes and coverings.



Coral T32 FR is a cut pile floor covering consisting of 60% wool and 40% nylon. It is the ideal choice for an entrance system, simultaneously absorbing moisture and removing dry soiling. Coral entrance systems can reduce cleaning costs and prolong the life of on-board floor finishes and coverings.

Coral T32 FR meets all the fire safety standards set by the International Maritime Organization (IMO) for products used in seagoing vessels. Yarn and backing systems have been developed to meet the stringent smoke toxicity and low flame spread standards required to achieve the IMO 'Wheelmark'.

As a result Coral T32 FR can be used with confidence in cruise liners, passenger ferries, charter boats and other seagoing vessels, in addition to offshore facilities where the 'Wheelmark' classification is required.



french blue*



steel*



graphite*



ruby



jade



brown

***Stocked items.**
Note: ruby/jade and brown references are not stocked but are made to order.
Minimum order quantities apply. Please ask your local sales manager for more details.

TECHNICAL SPECIFICATIONS

Technical specifications

Coral T32 FR meets the requirements of EN 1307

	Total thickness	ISO 1765	Approx. 7 mm
	Wear classification	EN 1307	Class 33
	Available size		Roll 200 cm wide
			Approx roll length 25 lm
	Suitability for castor chairs	EN 985	Castor chair continuous use r=2.8
	Colour fastness ratings:		
	Light	EN ISO 105/B02	5
	Rubbing	EN ISO 105/X12	4.5
	Water	EN ISO 105/E01	4.5
	Manufacturing method/type		Tufted, 1/8" cut-pile
	Designs		Mottled
	Pile material		60% Wool, 30% polyamide, 10% polyester with Zirpro flame retardant
	Tuft base		Non-woven polyester
	Backing		TFR™ Flame retardant latex
	Pile weight		1125 gram/m²
	Total weight	ISO 8543	Approx. 2595 gram/m²
	Pile thickness	ISO 1766	Approx. 6 mm
	Pile density	ISO 8543	0.160 gram/cm³
	Number of tufts	ISO 1763	Approx. 104,016/m²
	Impact sound reduction	EN ISO 717-2	29.6 dB
	Suitability for stairs	EN 1963	Stairs continuous use
	Comfort class	EN 1307	LC3



Coral T32 marine product meets the demands set by EN 14041



Fire behaviour	EN 13501-1	*
----------------	------------	---



Slip resistance	EN 13893	DS
-----------------	----------	----



Body voltage	ISO 6356	< 2.0 kV
--------------	----------	----------



Heat transmission resistance	ISO 8302	0.12 m² K/W
------------------------------	----------	-------------

EC declaration of conformity

*Passes the standards set by the International Maritime Organisation (IMO) fire test procedures for use in vessels at sea. IMO Certificate No. 164.117/1121/WCL MED0170
- Smoke and Toxicity Test - IMO Resolution MSC 307(88) Annex 1 Part 2 and Annex 2
- Surface Flammability Test – IMO Resolution MSC 307(88) Annex 1 Part 5 and Annex 2

Safety of Life at Sea (SOLAS) regulations state that carpets in muster areas and escape routes meet smoke, toxicity and low flame spread standards.



IMO Certificate No. 164.117/1121/WCL MED0170

westbond® FR

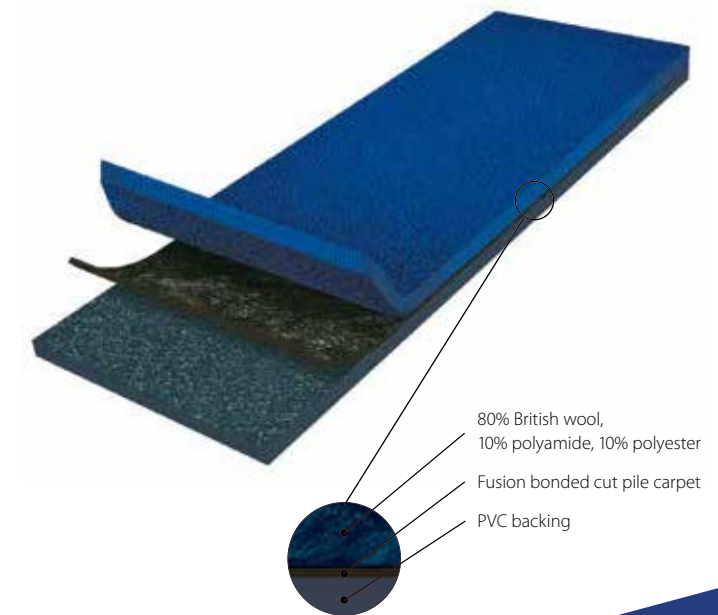
Infinite possibilities
and exceptional quality

westbond® FR

The Westbond wool carpet tile range is synonymous with sophistication and offers great warmth, comfort and acoustic benefits. Westbond FR carpet tiles are IMO certified and are ideally suited to many environments including cabins, restaurants, offices and lounge areas.

Benefits:

- Fully compliant with IMO Marine standards
- 50cm x 50cm tile format for easy installation and replacement
- Design flexibility to suit all interior design schemes – available in 144 colours
- Create a unique look and feel with custom colours and designs
- Offers warmth and underfoot comfort



Fusion bonding is a sophisticated method of carpet tile manufacture where individual yarn pile is bonded onto the backing material to make an extremely dense and luxurious carpet tile. Each tuft is individual and a high proportion of the yarn is in the wear surface providing a beautiful, rich, velour carpet tile which gives an excellent broadloom appearance.

Choose your own colours and combine them into a truly unique floor

Westbond allows customers to take control of the process of designing luxurious, custom carpet tiles with a heavy pile weight for the most prestigious installations.

Create your own carpet tile with a flex combination. The Flex carpet tile is unique to Westbond and offers the ideal solution for those seeking an individual look to the floor. Simply create your own carpet tile design by selecting colours from the Westbond FR range in a flex combination.

The results of your creativity can be easily and quickly realised with a sample to show you what the finished product will look like, dispatched within 24 hours.

NEW PRODUCT

Westbond is available in 144 colours that can be flexed together to create unique designs.



Below is only a selection of the colours available, for further information on the full range, please contact us.



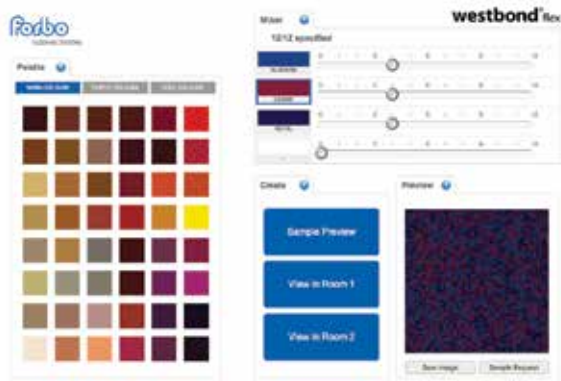
Westbond Flex carpet tiles are the ideal solution for those seeking a truly individual look to the floor. By mixing shades from the Westbond Colour collection, or from a custom colour of your choice, you can simply create your own custom designed Westbond Flex carpet tile.

Within two working days we will send you a ‘POM’ that offers a realistic impression of what the finished carpet tile will look like.



How to create a unique Westbond Flex design

To create your own Westbond Flex design simply choose your desired colours, minimum of two, maximum of four and visit www.forbo-flooring.co.uk/flexcreator. Here, you can design a Westbond Flex tile in the colour combination of your choice and within two working days, we'll send you a ‘POM’ to help you visualise what your design will look like on the floor.










Shown above are three plain yarns, which are combined together to create a chosen Flex design. A ‘pom’ is then created to help you visualise your unique finished carpet tile.

TECHNICAL SPECIFICATIONS

Technical specifications

Westbond FR meets the requirements of EN 1307

Description		Fusion bonded carpet tile	
Designs		Plain / Flex	
	Dimensions	50cm x 50cm	
	Total thickness	8mm ± 10%	
Pile height		6mm + 0mm/-0.5mm	
	Application	EN 1307	Class 33
Pile composition		80% dyed British wool/10% polyamide/10% polyester with Zirpro flame retardant	
Pile density		0.160 grams per cm ³	
Pile Weight		1200 gsm ± 10%	
	Total weight	3200 gsm ± 10%	
Tile backing		Flame retardant PVC	
Colour fastness ratings:			
	Light	EN ISO 105-B02	> 5
Seawater		4-5	
	Dimensional stability	EN 986	< 0.2 %
	Impact sound reduction	ISO 140-8	28 dB
Comfort class		LC5	
	Installation method	Monolithic, tessellated or quarter turn	
Westbond FR fusion bonded carpet tiles meet the requirements of EN 14041			
Reaction to Fire/Smoke/Toxicity		EN 13501-1	Passes the standards set by the IMO fire test procedures for use in vessels at sea
	Slip resistance	EN 13893	DS
	Body voltage	EN 10965 & EN1815	Pass < 2 kV

Final production might vary within commercial tolerances from sample.
Manufacturing specifications subject to normal industry tolerances.
Forbo reserves the right to improve the specification of its products without giving prior notice. Errors and omissions excepted.

What to do now?

For more information about any of the products and services offered by Forbo Flooring Systems, to request samples/brochures or a visit then contact us:

Email: transport@forbo.com

Website: www.forbo-flooring.com/transport

Tel: +44 (0)1773 744121

Let us keep you up-to-date

Visit us at transport-flooring.com for more information.



Linkedin: **Forbo Flooring Transport**



@forbotransport

transpress

Email us at info@forbo-transportflooring.com to sign up to our quarterly transport newsletter for:

- **Product information**
- **Design inspiration**
- **Forbo transport news**
- **Industry news**

All countries

Forbo Flooring UK Limited
High Holborn Road
Ripley
Derbyshire
DE5 3NT
UK

Tel: +44 (0) 1773 744121

Fax: +44 (0) 1773 744142

E-mail: transport@forbo.com

www.forbo-flooring.com/transport

USA

Forbo Flooring NA
Humboldt Industrial Park
8 Maplewood Drive
PO Box 667
Hazleton, PA 18202
USA

Tel: +570 450 0220

Fax: +570 401 7378

E-mail: info.na@forbo.com

www.forboflooring.na@forbo.com

