



transport flooring

Marine

flotex[®] FR
coral[®] T32 FR



creating better environments



FLOORING SYSTEMS

For marine operators, one of the most difficult areas to maintain a high standard of appearance is in the flooring

Forbo understands that material choice is one of the most critical aspects of designing marine transport interiors.

The material sets the tone for the overall look and feel of a vessel with many criteria influencing the specification including aesthetics, durability, maintenance and the requirement of IMO certification. Add to this other performance requirements such as slip resistance, sound absorption, comfort, anti-static properties, cleanability and green credentials and it becomes obvious why flooring choice is a complex one.

Forbo Flooring Systems manufactures the widest range of floor coverings in the market and offers a portfolio of IMO and non IMO certified products. Our key Account Managers will help you, and provide all the expert advice you need when selecting flooring for your marine projects. In addition to our core collections, we also offer a bespoke design service to help you create flooring designs that perfectly match your interior requirements.

We understand that aesthetics and corporate branding are of high importance, and that functionality and durability play an important role in defining different floor covering requirements.

Need to reduce the costs of cleaning?

In all marine transport environments, having protective entrance systems such as Forbo's Coral T32 FR can help greatly. With a cut pile construction of 60% wool and 40% nylon, it stops up to 90% of walked in dirt and moisture, which significantly reduces cleaning costs and prolongs the lifetime of the interior floorcoverings. It also meets the IMO standards.



IMO certified products are;

- **Flotex FR**
(a unique flocked floorcovering)
- **Coral T32 FR**
(a textile entrance system)
- **Forbo's own IMO certified primers and adhesives**

Non IMO products include;

- **Linoleum (Marmoleum)**
- **Vinyl: Safety, Acoustic and LVT**
(Step, Sarlon Trafic, Allura)
- **Carpet tiles (Tessera, Westbond)**
- **Flocked (Flotex)**
- **Entrance systems (Coral, Nuway)**



The only IMO certified, washable, textile floorcovering

Flotex FR is unique, combining the cleaning properties and durability of a resilient flooring with the comfort, slip resistance and acoustic properties usually associated with textiles.

Benefits

- Fully compliant to IMO Marine standards
- Smooth textile velour like surface that's comfortable and warm underfoot
- Excellent slip resistance and acoustic properties
- 100% waterproof. Impervious backing makes it suitable for wet cleaning
- Durable construction: using Nylon 6.6
- Easy to clean using standard cleaning equipment
- Easy to repair any damaged areas
- Anti-microbial treatment
- Improved indoor air quality (independently proven by Allergy UK)
- Excellent acoustic properties up to 20dB
- Choose from an extensive range of designs and colours or use our bespoke design service
- High definition print offers you complete freedom of design.

Total Design Freedom: Shown here is just a snapshot of the many design styles available. There is a wide collection of Classic and HD (High Definition) designs and colours. In addition the digitally printed collection offers you complete freedom for customising the interior space of any marine environment. For more details please visit www.forbo-flooring.com



Semi plain



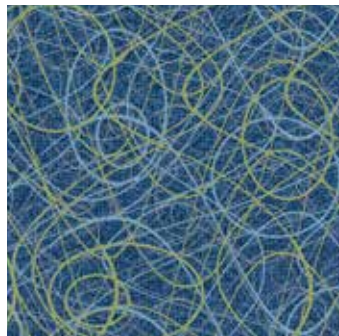
Floral



Linear



Natural

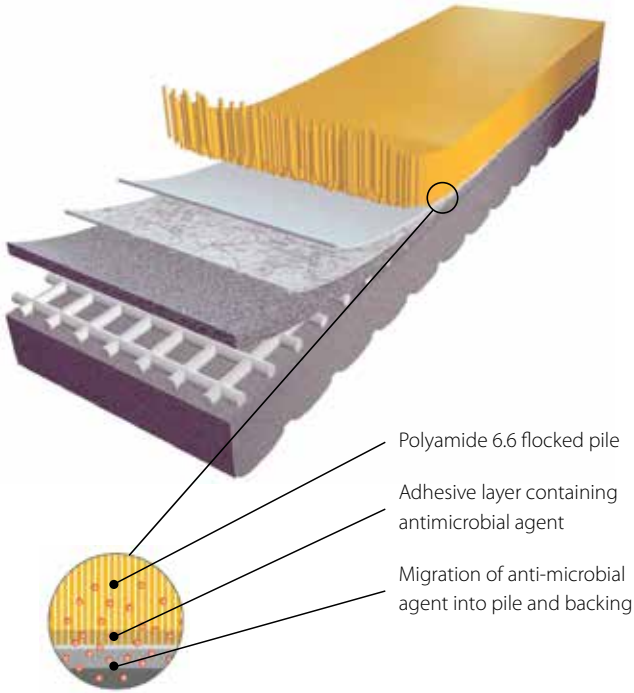


Random



Bespoke





Flotex FR is made from a closed cell vinyl foam, re-enforced base, with a densely flocked surface of nylon 6.6 fibres that are anchored firmly into the base layer. Flotex FR is extremely dimensionally stable and has the velour optics of a textile floor covering whilst being functional and easy to clean.

Flotex FR offers consistent protection against a wide variety of bacteria. Thanks to its unique construction, which helps to reduce the amount of allergens in the atmosphere, Flotex FR has been awarded the prestigious Allergy UK Seal of Approval.

Flotex HD FR consists of a unique High Definition digital print collection that creates superior texture with almost 3D-like appearance. Flotex HD FR, through its technology, allows for large endless pattern repeats and vivid lifelike colours creating a new dimension for Flotex FR and providing ultimate design flexibility for marine environments.

Flotex FR meets the requirements of EN 1307

	Total thickness	ISO 1765	Approx 3.3 mm
	Roll width	EN 426	200 cm
	Roll length	EN 426	30 m
	Light fastness	EN ISO 105/B02	6
	Pile material		100% polyamide
	Dimensional stability	ISO 2551	≤ 0.20%
	Total weight	ISO 8543	Approx 1225 gram/m ²
	Pile installation weight	ISO 8543	Approx. 250 gram/m ²
	Pile thickness	ISO 1766	Approx 2 mm
	Electrical resistance	EN 10965	Approx. 10 ¹⁰ Ω
	Contact sound insulation	ISO 140-8	Δ Lw = approx. 22 dB

Flotex FR product meets the demands set by EN 14041

	Slip resistance	EN 13893	> 0.30
	Personal charging	ISO 6356	< 2 kV

EC declaration of conformity

IMO Resolution A653(16)

IMO Resolution MSC 307(88) Annex 1 Part 2

IMO Resolution MSC 307(88) Annex 1 Part 5

US Coast Guard approval ref: 164.117/1121/WCL MED0364



IMO Certificate No. 164.117/1121/WCL MED0364



coral[®] T32 FR

Coral is the market leader in entrance systems providing an exceptionally versatile and proven range of 'clean-off' entrance system products and customisable carpets.

Benefits

- Fully compliant to IMO Marine standards
- Stops up to 90% of walked in dirt and moisture
- High moisture absorption
- Dirt scraping for effective clean off
- Excellent dirt storage/soil hiding
- Durable construction: using a 60% wool/40% nylon mix
- Advanced colouring and choice
- Using Coral T32 FR can reduce cleaning costs and prolong the lifetime of on board floor finishes and coverings.

Coral T32 FR is a cut pile floor covering consisting of 60% wool and 40% nylon. It is the ideal choice for an entrance system, simultaneously absorbing moisture and removing dry soiling. Coral entrance systems can reduce cleaning costs and prolong the life of on-board floor finishes and coverings.

This specially modified version of Coral T32 meets all the fire safety standards set by the International Maritime Organization (IMO) for products used in seagoing vessels. Yarn and backing systems have been developed to meet the stringent smoke toxicity and low flame spread standards required to achieve the IMO 'Wheelmark'.

As a result Coral T32 FR can be used with confidence in cruise liners, passenger ferries, charter boats and other seagoing vessels, in addition to offshore facilities where the 'Wheelmark' classification is required.



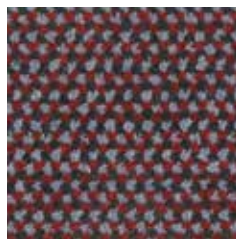
french blue*



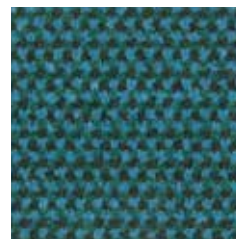
steel*



graphite*



ruby



jade



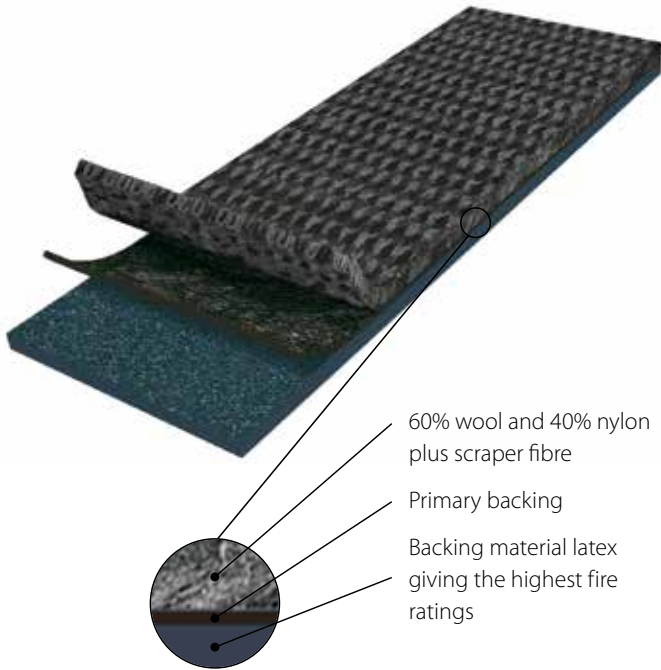
brown

*Stocked items.

Note: ruby/jade and brown references are not stocked but are made to order.

Minimum order quantities apply. Please ask your local sales manager for more details.





Coral T32 FR meets the requirements of EN 1307

	Total thickness	ISO 1765	Approx 7 mm
	Wear classification	EN1307	class 4
	Available sizes (all sizes are approx.)		Rolls Mats
			Special No mats
	Suitability for castor chairs	EN 985	Castor chair continuous use r = 2.8
	Colour fastness ratings:		
	Light	EN ISO 105/B02	5
	Rubbing	EN ISO 105/X12	4.5
	Water	EN ISO 105/E01	4.5
	Manufacturing method/type		Tufted, 1/8" cut-pile
	Designs		Mottled
	Pile material		60% Wool/40% Nylon plus scraper fibre
	Tuft base		Non-woven polyester
	Backing		TFR™ Flame retardant latex
	Total weight	ISO 8543	Approx 2.595 gram/m ²
	Pile installation weight	ISO 8543	Approx. 1.125 gram/m ²
	Pile thickness	ISO 1766	Approx 6 mm
	Pile density	ISO 8543	0.160 gram/cm ³
	Number of tufts	ISO 1763	Approx 104,016/m ²
	Suitability for stairs	EN 1963	Stairs continuous use
	Comfort class	EN 1307	LC3



All Coral products meet the requirements of EN 14041, excluding loose-laid mats and rugs

	Fire behaviour	EN 13501-1	*
	Slip resistance	EN 13893	DS
	Personal charging	ISO 6356	< 2.5 kV
	Heat transmission resistance	ISO 8302	0.12 m ² K/W

EC declaration of conformity

*Passes the standards set by the International Maritime Organisation (IMO) fire test procedures for use in vessels at sea.

IMO Resolution A653(16)

Smoke and Toxicity Test - IMO Resolution MSC 61(67) Annex 1 Part 2 and Annex 2

Surface Flammability Test - IMO Resolution MSC 61(67) Annex 1 Part 5 and Annex 2

Safety of Life at Sea (SOLAS) regulations state that carpets in muster areas and escape routes meet smoke, toxicity and low flame spread standards.



IMO Certificate No. 164.117/1121/WCL MED0170

Forbo Flooring Systems is part of the Forbo Group, a global leader in flooring and movement systems, and offers a full range of flooring products for commercial and affordable housing and new build markets. High quality linoleum, vinyl, textile, flocked and entrance flooring products combine functionality, colour and design, offering total flooring solutions for any environment.



USA

Forbo Flooring NA
Humboldt Industrial Park
8 Maplewood Drive
PO Box 667
Hazleton, PA 18202
USA
Tel: +570 450 0220
Fax: +570 401 7378
E-mail: info.na@forbo.com
www.forboflooring.na@forbo.com

All other countries

Forbo Flooring Systems
High Holborn Road
Ripley
Derbyshire
DE5 3NT
UK
Tel: +44 (0) 1773 744121
Fax: +44 (0) 1773 744142
Email: info@forbo-transportflooring.com
www.forbo-flooring.com/transportation

